



The Maryland-National Capital Park and Planning Commission

PRINCE GEORGE'S COUNTY
Planning Department

pgplanning.org

Innovative Uses of OnTheMap Data for Transportation Planning

Kui Zhao, AICP, Prince George's County Planning Department of the
Maryland-National Capital Park and Planning Commission (MNCPPC)

2026 Local Employment Dynamics Partnership Hybrid Workshop, U.S. Census
Bureau, May 13, 2026

Means of Transportation to Work

Types of Transportation	2010		2023		Change (2010 to 2023)		
	Number	% Share	Number	% Share	Number	% Share	% Change
Total Workers 16 Years Old and Over	442,963	-	490,621	-	47,658	-	10.8%
Public transportation (excluding taxicab)	77,113	17.4%	42,184	8.6%	-34,929	-8.8%	-45.3%
Drove alone	284,020	64.1%	300,039	61.2%	16,019	-3.0%	5.6%
Carpooled	55,982	12.6%	49,941	10.2%	-6,041	-2.5%	-10.8%
Walked	9,579	2.2%	8,487	1.7%	-1,092	-0.4%	-11.4%
Taxi, motorcycle, bicycle, or other	4,298	1.0%	14,249	2.9%	9,951	1.9%	231.5%
Worked from home	11,971	2.7%	75,721	15.4%	63,750	12.7%	532.5%

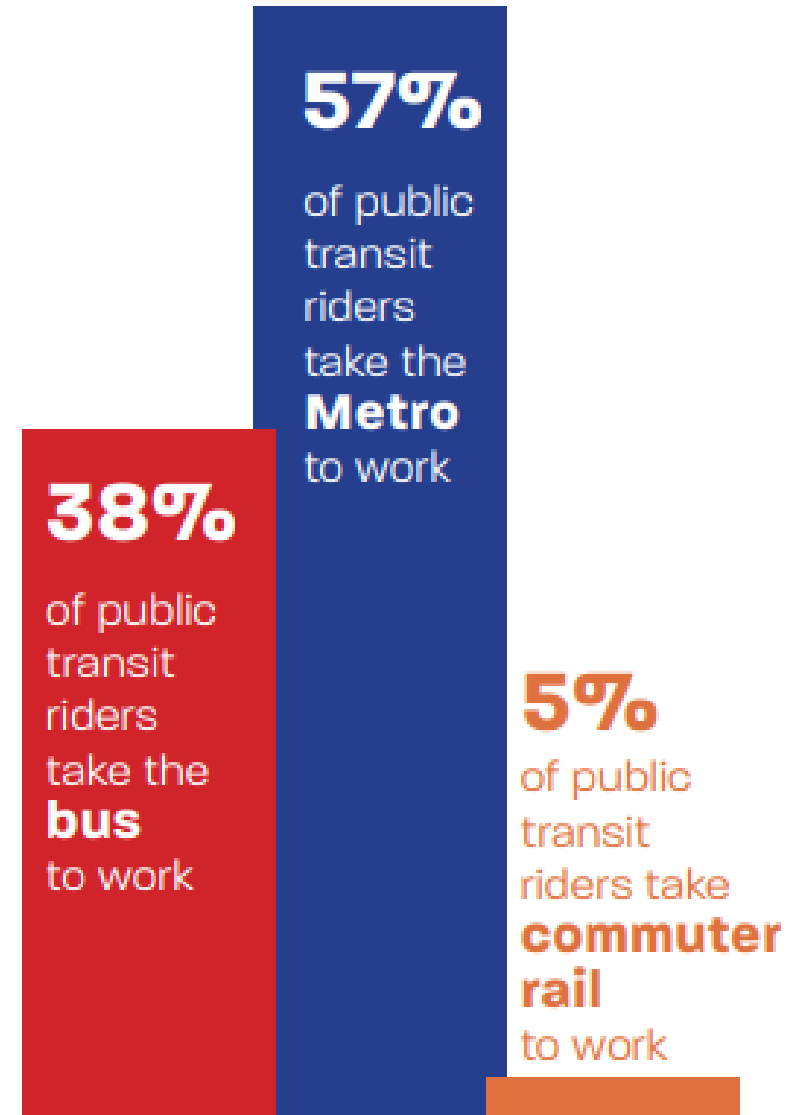
Source: U.S. Census Bureau, American Community Survey (ACS) 5-Year Estimates, 2010 and 2023.

Means of Public Transportation to Work

Types of Public Transportation	2010		2023		Change (2010 to 2023)		
	Number	% Share	Number	% Share	Number	% Share	% Change
Public transportation (excluding taxicab)	77,113	-	42,184	-	-34,929	-	-45.3%
Bus	26,484	34.3%	15,897	37.7%	-10,587	3.3%	-40.0%
Subway	47,211	61.2%	23,899	56.7%	-23,312	-4.6%	-49.4%
Commuter Rail	2,826	3.7%	2,025	4.8%	-801	1.1%	-28.3%
Light Rail, Streetcar or Trolley	579	0.8%	363	0.9%	-216	0.1%	-37.3%
Ferryboat	13	0.0%	0	0.0%	-13	0.0%	-100.0%

Source: U.S. Census Bureau, American Community Survey (ACS) 5-Year Estimates, 2010 and 2023.

Means of Public Transit to Work

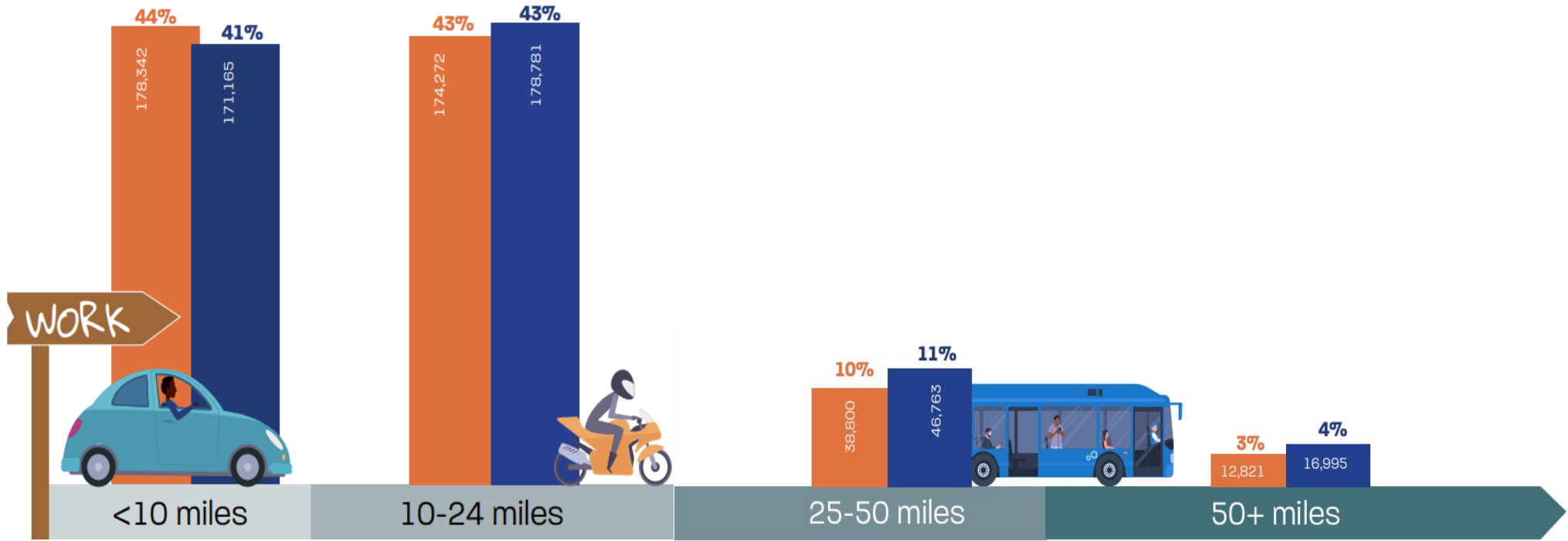


Commuting Distance to Work

Commuting distance	2010		2022		Change (2010 to 2022)		
	Number	% Share	Number	% Share	Number	% Share	% Change
Total All Employed Residents (Workers)	404,235	-	413,704	-	9,469	-	2.3%
<10 miles	178,342	44.1%	171,165	41.4%	-7,177	-2.7%	-4.0%
10-24 miles	174,272	43.1%	178,781	43.2%	4,509	0.1%	2.6%
25-50 miles	38,800	9.6%	46,763	11.3%	7,963	1.7%	20.5%
>50 miles	12,821	3.2%	16,995	4.1%	4,174	0.9%	32.6%

Source: U.S. Census Bureau, Longitudinal Employer-Household Dynamics, 2010 and 2022.

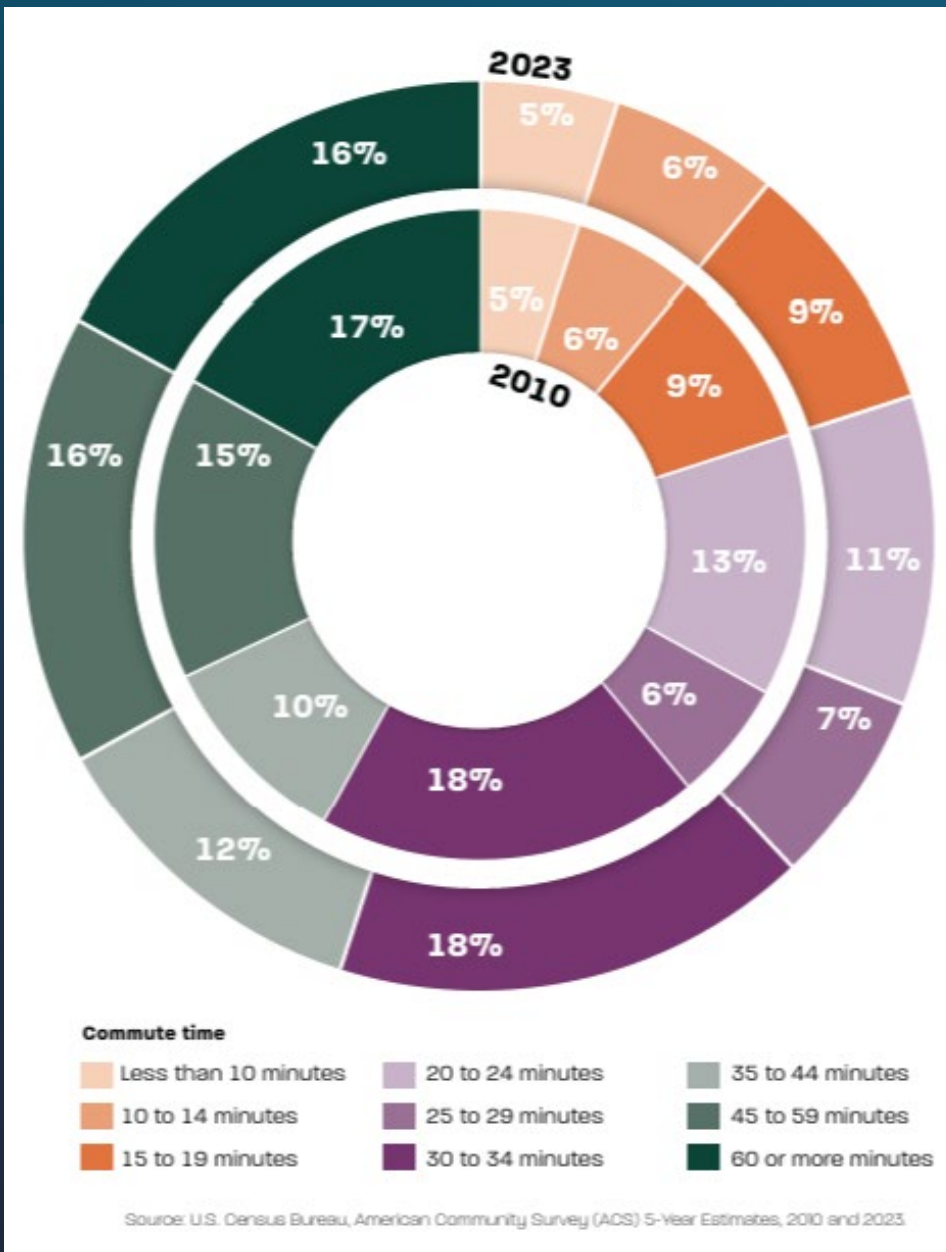
2023 data are not available at this point.



Travel Time to Work

Travel Time to Work	All Means		Car, Truck, or Van		Public Transportation		Walked		Taxicab, Motorcycle, Bicycle, or Others	
	2010	2023	2010	2023	2010	2023	2010	2023	2010	2023
Total Workers 16 Years Old and Over	427,341	424,598	340,969	354,923	74,730	44,229	9,051	10,127	2,591	15,319
Less than 10 minutes	5.4%	4.6%	5.7%	4.2%	1.1%	1.3%	27.7%	23.4%	16.7%	11.7%
10 to 14 minutes	6.4%	6.4%	6.9%	6.3%	1.9%	3.3%	22.9%	20.0%	12.0%	8.7%
15 to 19 minutes	9.4%	9.1%	10.5%	9.0%	2.5%	3.6%	25.5%	29.4%	10.5%	15.5%
20 to 24 minutes	12.7%	11.1%	14.3%	11.0%	4.8%	7.0%	16.8%	15.6%	9.3%	21.7%
25 to 29 minutes	5.9%	7.4%	6.4%	8.0%	4.3%	3.8%	2.0%	1.6%	0.0%	9.2%
30 to 34 minutes	18.2%	16.4%	19.0%	18.4%	16.3%	3.7%	2.1%	9.1%	17.6%	11.5%
35 to 44 minutes	9.7%	12.4%	10.0%	13.4%	9.5%	11.0%	1.4%	0.0%	5.8%	3.5%
45 to 59 minutes	14.9%	16.2%	14.6%	16.2%	18.3%	20.8%	1.6%	0.0%	6.8%	13.1%
60 or more minutes	17.4%	16.4%	12.6%	13.7%	41.4%	45.4%	0.0%	0.8%	21.3%	5.1%

Source: U.S. Census Bureau, American Community Survey (ACS) 5-Year Estimates, 2010 and 2023.



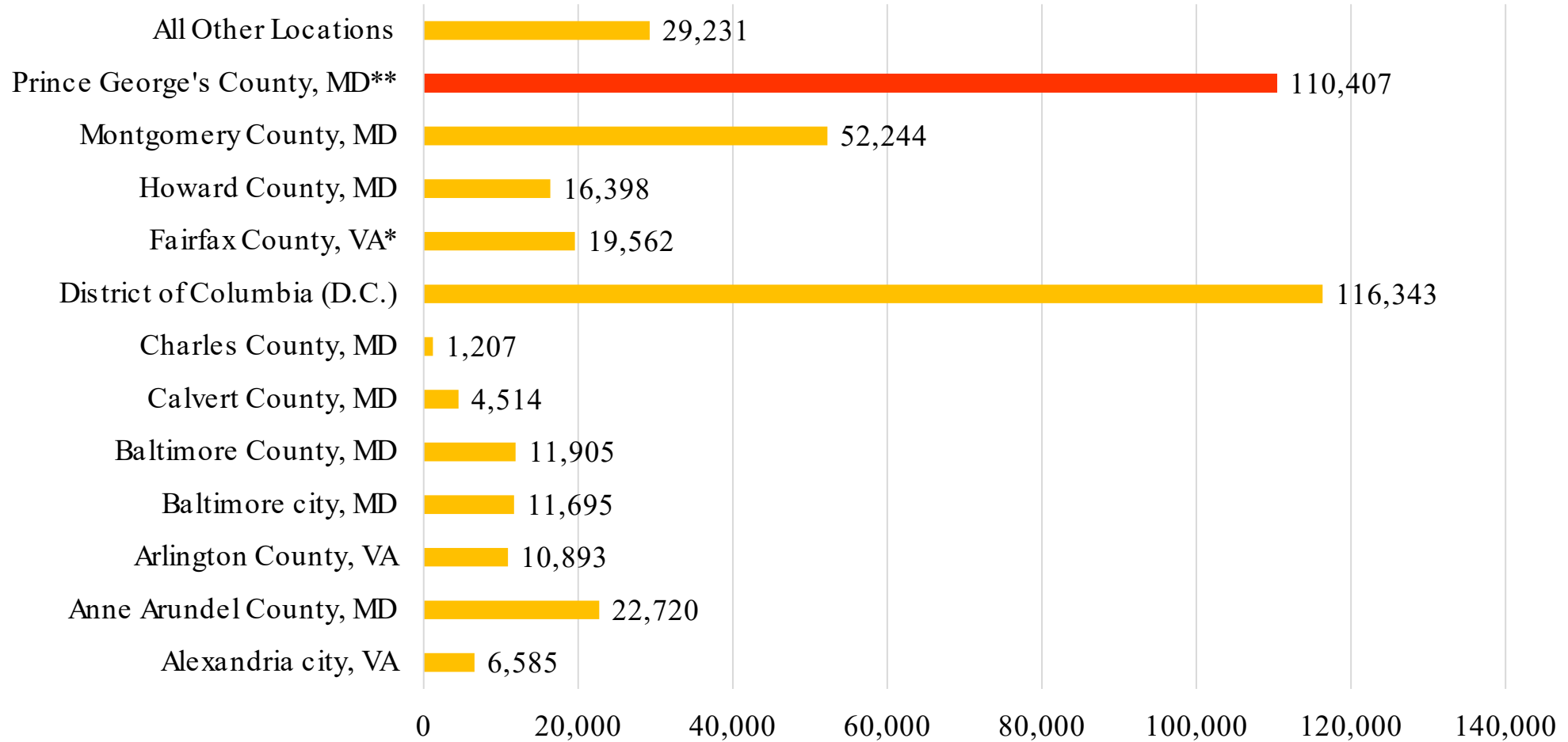
Inflow and Outflow of Workers

Total All Employed Residents (Workers)	2010		2022		Change (2010 to 2022)		
	Number	% Share	Number	% Share	Number	% Share	% Change
Living in the County	404,235	-	413,704	-	9,469	-	2.3%
Living and Employed in the County	116,412	28.8%	110,407	26.7%	-6,005	-2.1%	-5.2%
Living in the County but Employed Outside	287,823	71.2%	303,297	73.3%	15,474	2.1%	5.4%
Employed in the County	306,114	-	309,440	-	3,326	-	1.1%
Employed and Living in the County	116,412	38.0%	110,407	35.7%	-6,005	-2.3%	-5.2%
Employed in the County but Living Outside	189,702	62.0%	199,033	64.3%	9,331	2.3%	4.9%
Net Job Inflow (+) or Outflow (-)	-98,121	-	-104,264	-	-6,143	-	6.3%

Source: U.S. Census Bureau, Longitudinal Employer-Household Dynamics, 2010 and 2022.

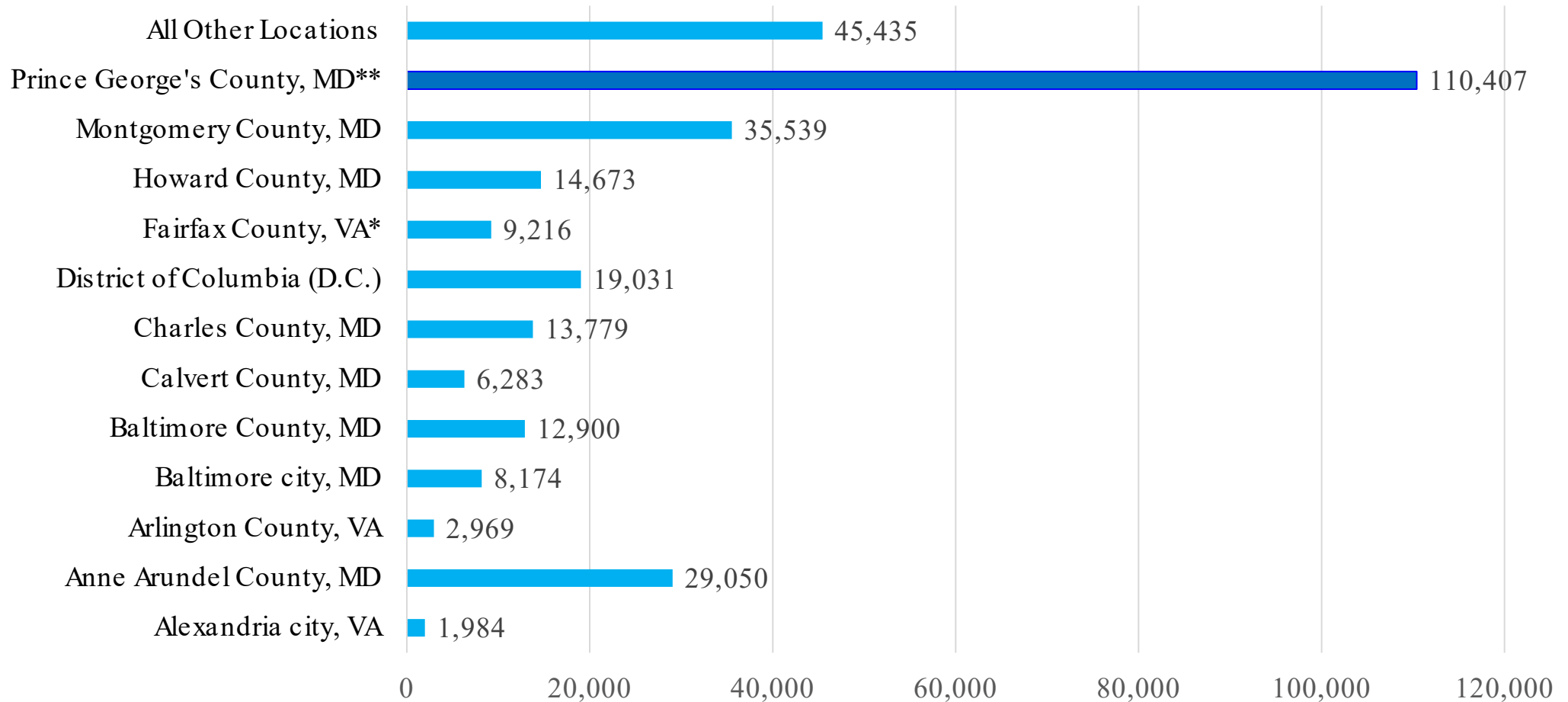
2023 data are not available at this point.

Job Destinations of Prince George's County Residents, 2022



Source: U.S. Census Bureau, LEHD. *: including Falls Church City and Fairfax City. **: Live and work in County.

Workers from D.C. or Other Counties to Prince George's County, 2022



Source: U.S. Census Bureau, LEHD. *: including Falls Church City and Fairfax City. **: Live and work in County.

Commuters by Transit Stop or Station by PUMA

PUMA Name	Bus Commuters		Bus Stops	Rail Commuters		Rail Stations
	Number	% Share		Number	% Share	
Total Workers 16 Years Old and Over	15,897	-	4,239	23,899	-	24
College Park City & Langley Park	4,501	28.3%	225	3,030	12.7%	3
Laurel, Greenbelt Cities & Beltsville	1,214	7.6%	752	2,067	8.6%	5
New Carrollton & Hyattsville	2,956	18.6%	871	3,160	13.2%	3
Seat Pleasant City, Capitol Heights Town & Landover	3,058	19.2%	676	4,647	19.4%	8
Bowie City, Kettering & Largo	763	4.8%	589	4,850	20.3%	1
Clinton, Fort Washington & Rosaryville	476	3.0%	439	1,946	8.1%	0
Oxon Hill, Hillcrest Heights & Temple Hills	2,929	18.4%	687	4,199	17.6%	4

Sources:

- 1) Prince George's County Government and Maryland State Government.
- 2) U.S. Census Bureau, American Community Survey 5-Year Estimates, 2023.
- 3) Washington Metropolitan Area Transit Authority (WMATA).

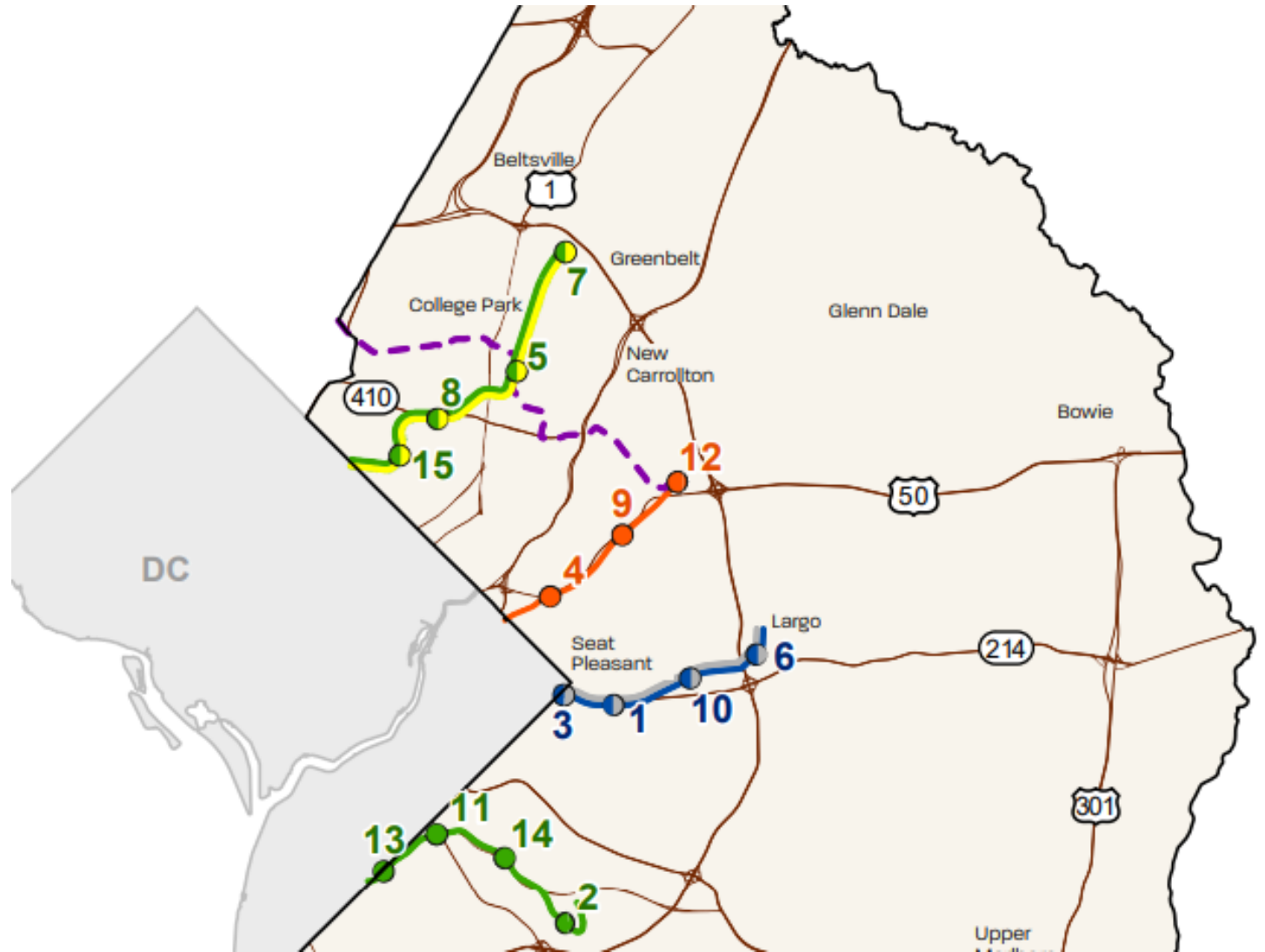
WMATA Metro Ridership by Metro Station by PUMA

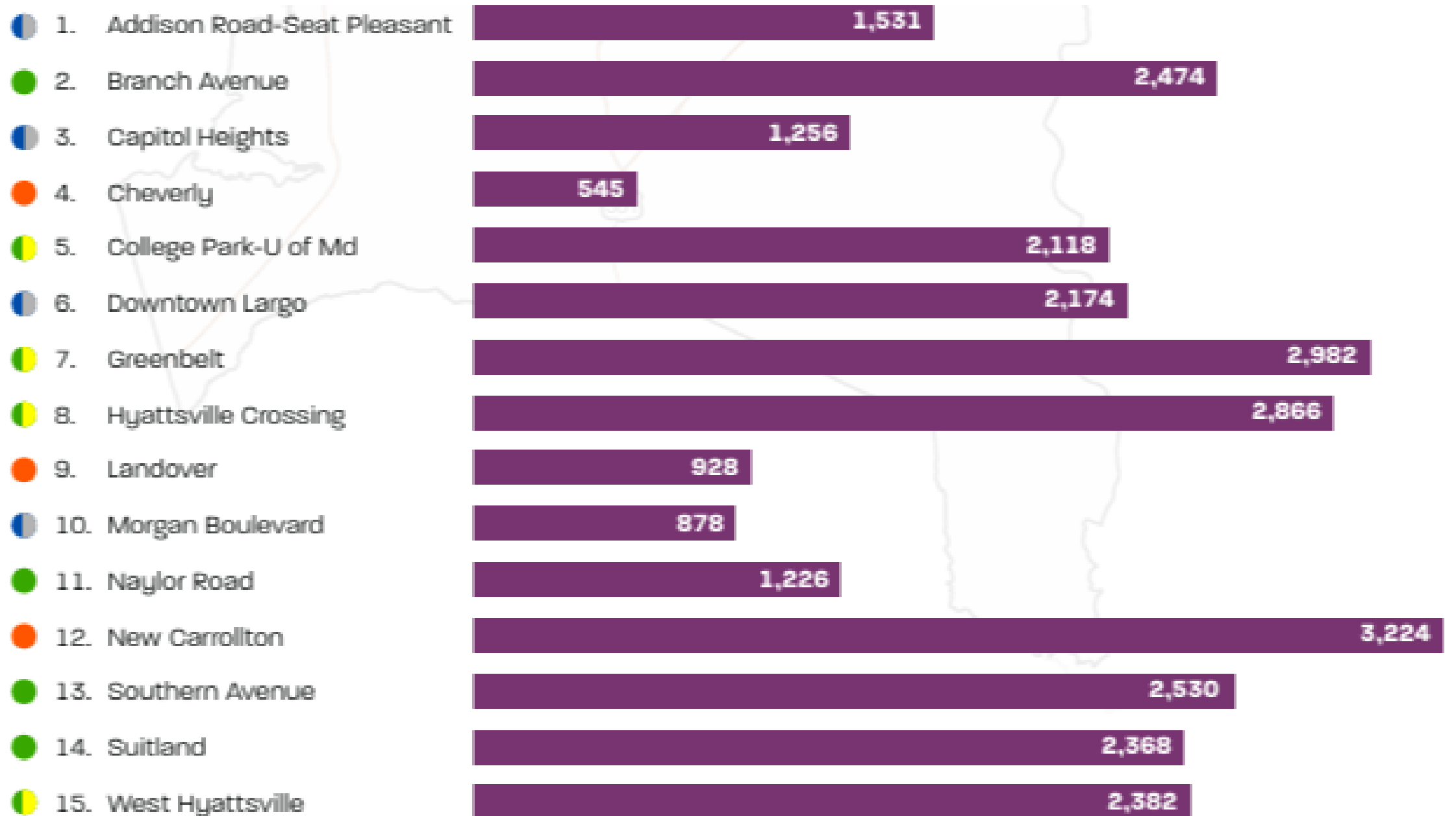
Metro Station	Metro Line	PUMAName	Average Daily Tapped Entries								
			2014	2020	2024	2014 to 2020		2020 to 2024		2014 to 2024	
Addison Road-Seat Pleasant	Blue/Silver	Seat Pleasant City, Capitol Heights Town & Landover	3,178	977	1,531	-2,201	-69.3%	554	56.7%	-1,647	-51.8%
Branch Ave	Green	Oxon Hill, Hillcrest Heights & Temple Hills	6,049	1,445	2,474	-4,604	-76.1%	1,029	71.2%	-3,575	-59.1%
Capitol Heights	Blue/Silver	Seat Pleasant City, Capitol Heights Town & Landover	1,966	719	1,256	-1,247	-63.4%	537	74.7%	-710	-36.1%
Cheverly	Orange	(See notes)*	1,380	279	545	-1,101	-79.8%	266	95.3%	-835	-60.5%
College Park-UofMd	Green/Yellow/Purple	New Carrollton & Hyattsville	4,359	859	2,118	-3,500	-80.3%	1,259	146.6%	-2,241	-51.4%
Downtown Largo	Blue/Silver	Bowie City, Kettering & Largo	4,656	1,187	2,174	-3,469	-74.5%	987	83.2%	-2,482	-53.3%
Greenbelt	Green/Yellow	College Park City & Langley Park	6,116	1,683	2,982	-4,433	-72.5%	1,299	77.2%	-3,134	-51.2%
Hyattsville Crossing	Green/Yellow	College Park City & Langley Park	4,834	1,732	2,866	-3,102	-64.2%	1,134	65.5%	-1,968	-40.7%
Landover	Orange	Seat Pleasant City, Capitol Heights Town & Landover	1,932	631	928	-1,301	-67.3%	297	47.1%	-1,004	-52.0%
Morgan Boulevard	Blue/Silver	Seat Pleasant City, Capitol Heights Town & Landover	2,079	532	878	-1,547	-74.4%	346	65.0%	-1,201	-57.8%
Naylor Road	Green	Oxon Hill, Hillcrest Heights & Temple Hills	2,818	819	1,226	-1,999	-70.9%	407	49.7%	-1,592	-56.5%
New Carrollton	Orange	Seat Pleasant City, Capitol Heights Town & Landover	8,381	1,979	3,224	-6,402	-76.4%	1,245	62.9%	-5,157	-61.5%
Southern Avenue	Green	Oxon Hill, Hillcrest Heights & Temple Hills	4,913	1,592	2,530	-3,321	-67.6%	938	58.9%	-2,383	-48.5%
Suitland	Green	Oxon Hill, Hillcrest Heights & Temple Hills	5,278	1,417	2,368	-3,861	-73.2%	951	67.1%	-2,910	-55.1%
West Hyattsville	Green/Yellow	College Park City & Langley Park	3,712	1,459	2,382	-2,253	-60.7%	923	63.3%	-1,330	-35.8%

Source: Washington Metropolitan Area Transit Authority (WMATA).

*: Border of New Carrollton & Hyattsville and Seat Pleasant City, Capitol Heights Town & Landover

WMATA Metro Lines & Stations







Kui Zhao, AICP, Planning Supervisor, kui.zhao@ppd.mncppc.org, 310-952-3080

Acknowledgments: Senior Leaders; Xuedi Yan, University of Maryland; William Lescure, Senior GIS Specialist;
and Carly Brockinton, Senior Marketing Specialist
Prince George's County Planning Department