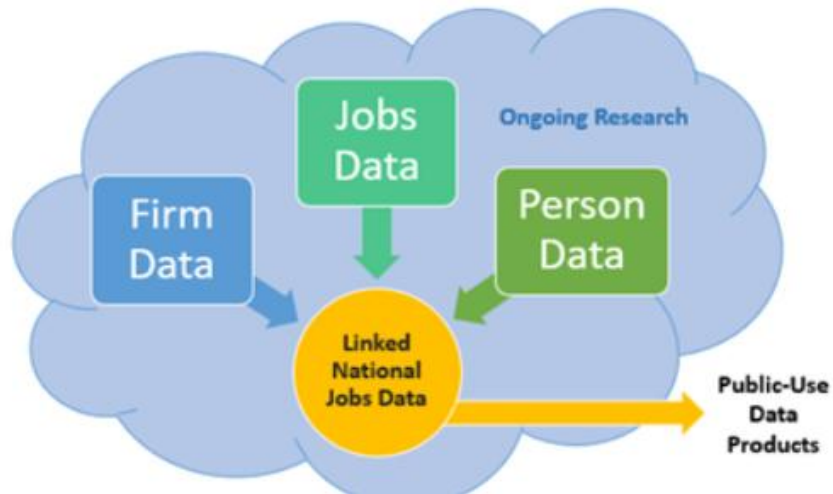


LEHD Data Infrastructure



How Does NJ Use Longitudinal Employer-Household Data?

Dr. Nicol Nicola, DBA

Division of Economic and Demographic Research

Office of Research & Information, NJDOL



Agenda

- Who Are We?
- Provide an overview of the LEHD data
- Two examples of how we use the data
 - Disaster Impact
 - Are jobs leaving New Jersey?

NJDOL Office of Research and Information

- Division of Economic and Demographic Research
 - Collects and analyzes data on employers, employees, and population demographics
- “Starbucks of Data” – customize data to fit specific project needs



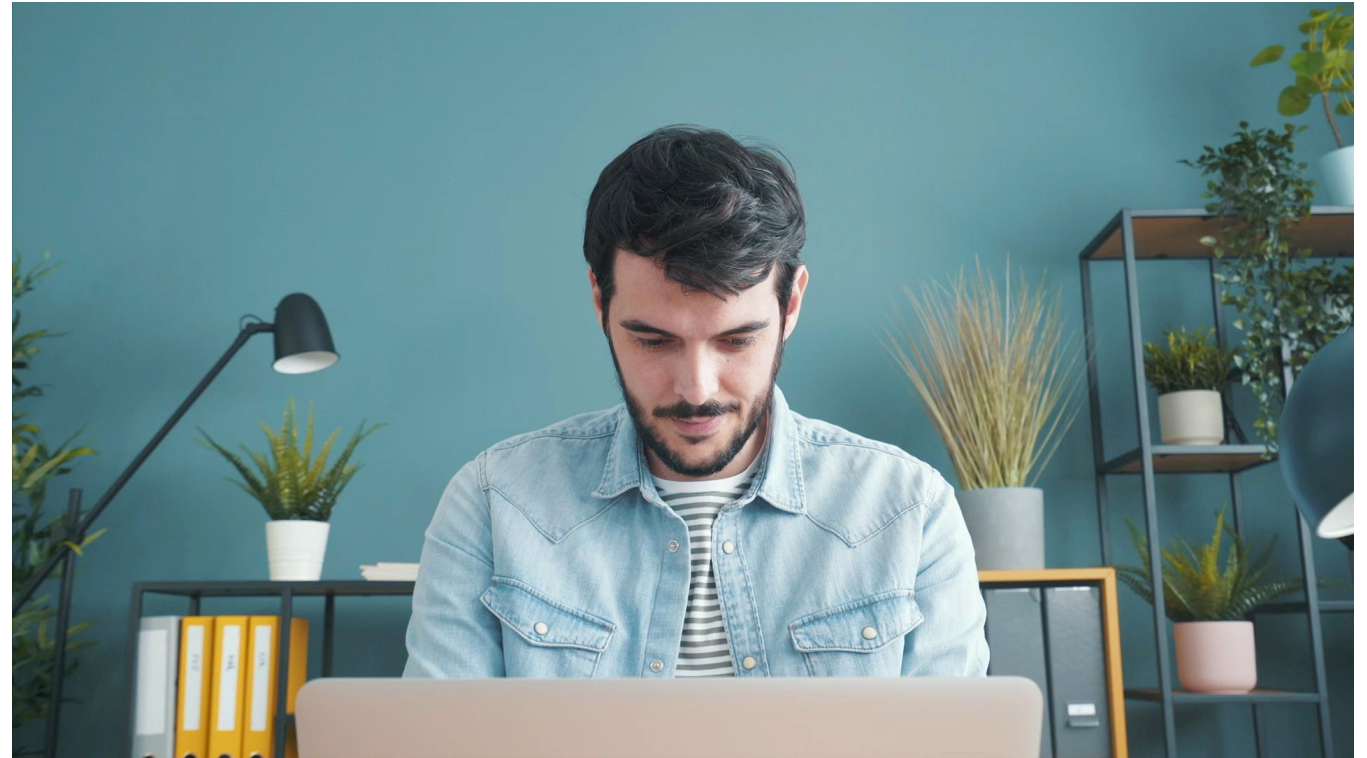


What Are the LEHD Data Products?

- Available data products include:
 - Quarterly Workforce Indicators (QWI)
 - Origin-Destination Employment Statistics (LODES)
 - Post-Secondary Employment Outcomes (PSEO)
 - Job-to-Job Flows (J2J)

Quarterly Workforce Indicators (QWI)

- Set of economic indicators on workforce dynamics
- Measures include:
 - Employment
 - Job creation
 - Earnings



Post-Secondary Employment Outcomes (PSEO)

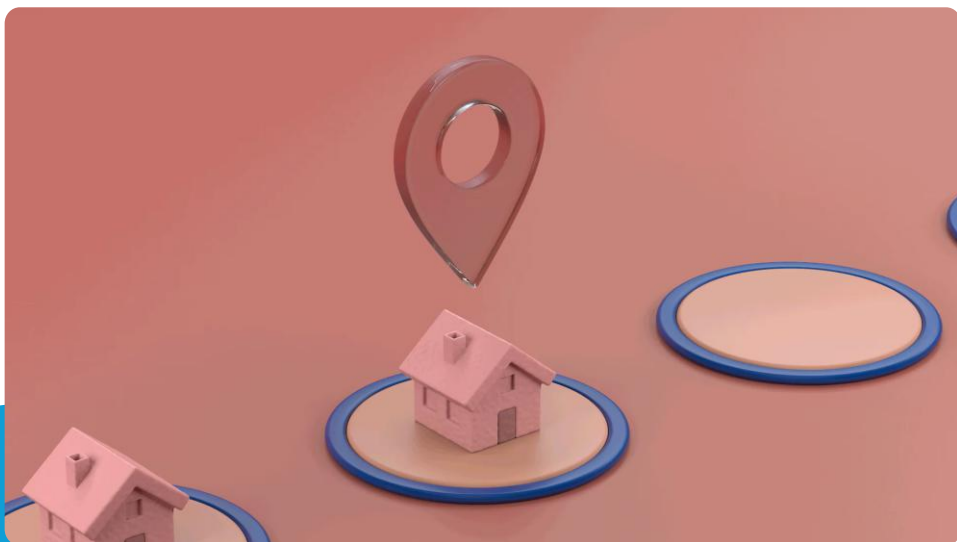
- Experimental statistics on graduate outcomes
 - Focus: earnings and employment outcomes of post-secondary graduates
- Reported by:
 - Institution
 - Degree field
 - Degree level
 - Graduation cohort





The Origin-Destination Employment Statistics (LODES)

- Tracks where people live and where they work
- Core dataset behind OnTheMap
- Enables commuting pattern analysis
- Three types of data:
 - Origin-Destination (OD): worker home-to-work flows
 - Residence Area Characteristics (RAC): jobs held by residents
 - Workplace Area Characteristics (WAC): jobs located in an area



Job-to-Job Flows (J2J)

- Measures job mobility in the United States
- Tracks worker transitions and labor market dynamics
- Key Statistics:
 - Job-to-job transition rate
 - Hires and separations to/from employment
 - Earnings changes



Why Is LEHD Data Important to New Jersey?



Understanding workforce dynamics



Detailed analysis by various categories

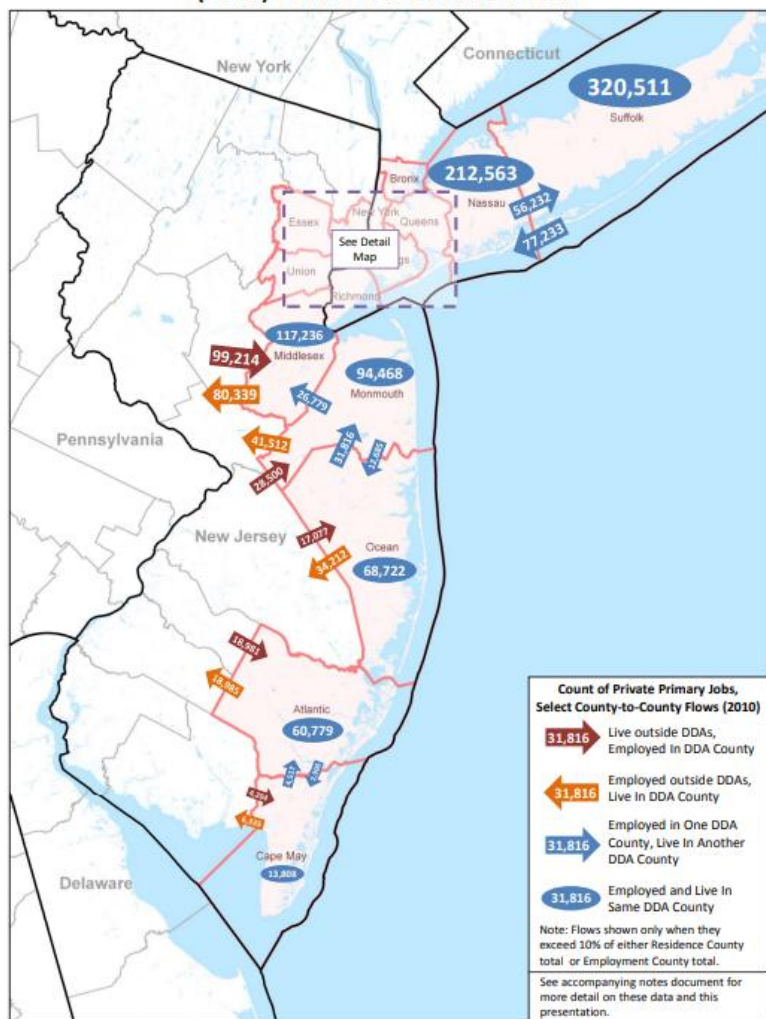


Policy and planning support

Disaster Impact

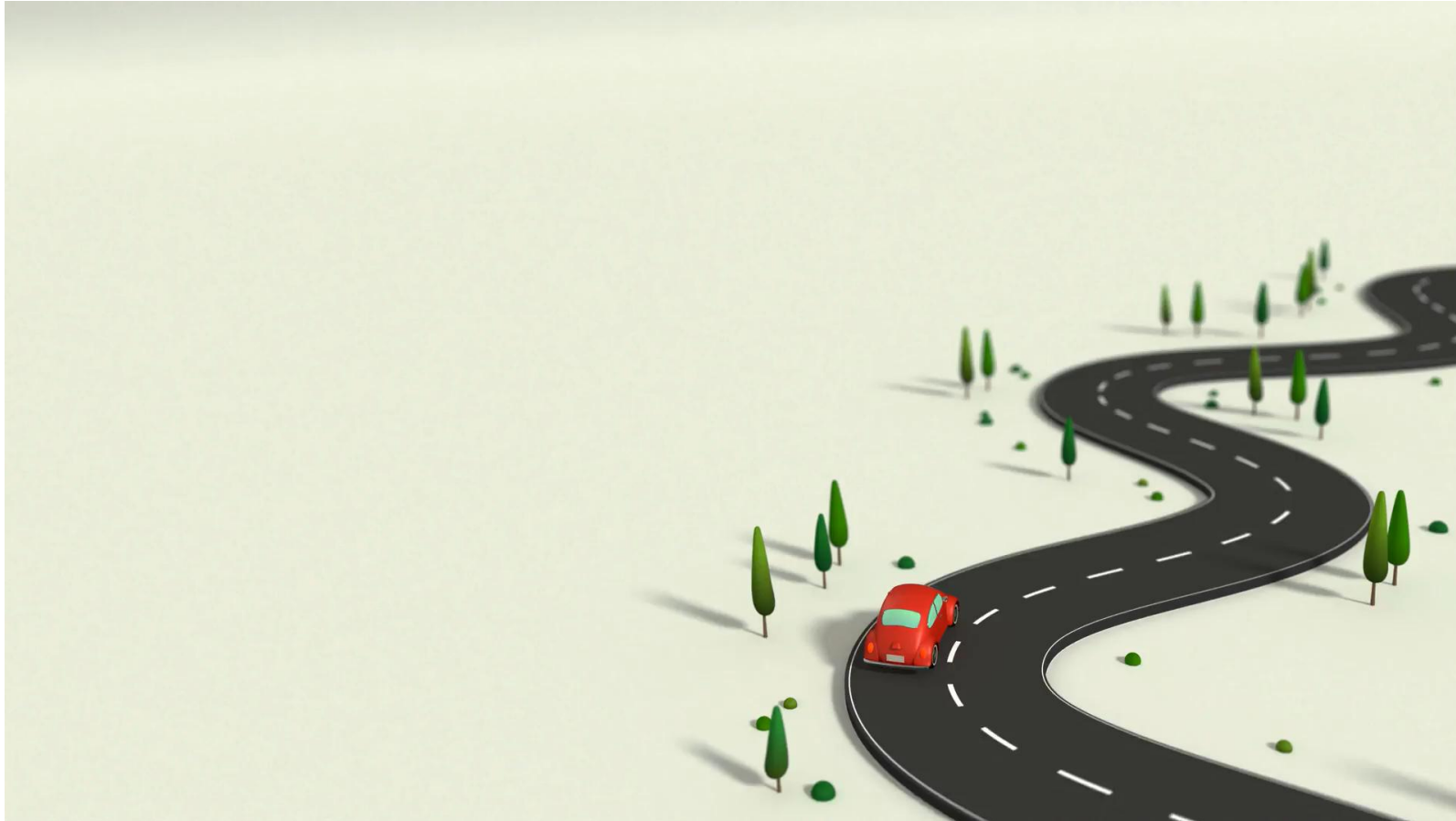


County Flows of Employment for Disaster Declaration Areas (DDAs) Under DR-4085 and DR-4086



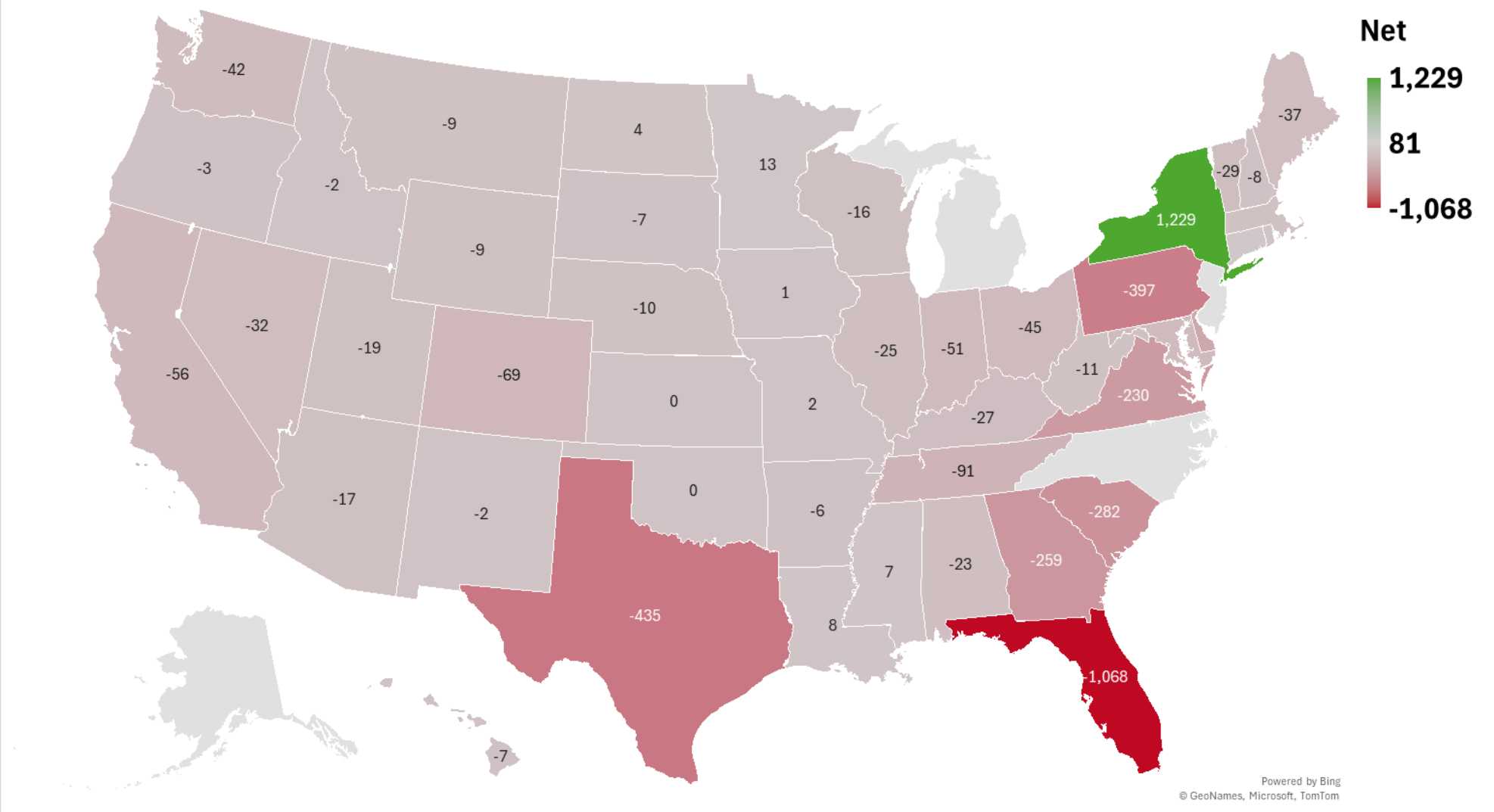
County Flows of Employment for Disaster Declaration Areas
(DDAs) Under DR-4085 and DR-4086 (Detail Map)



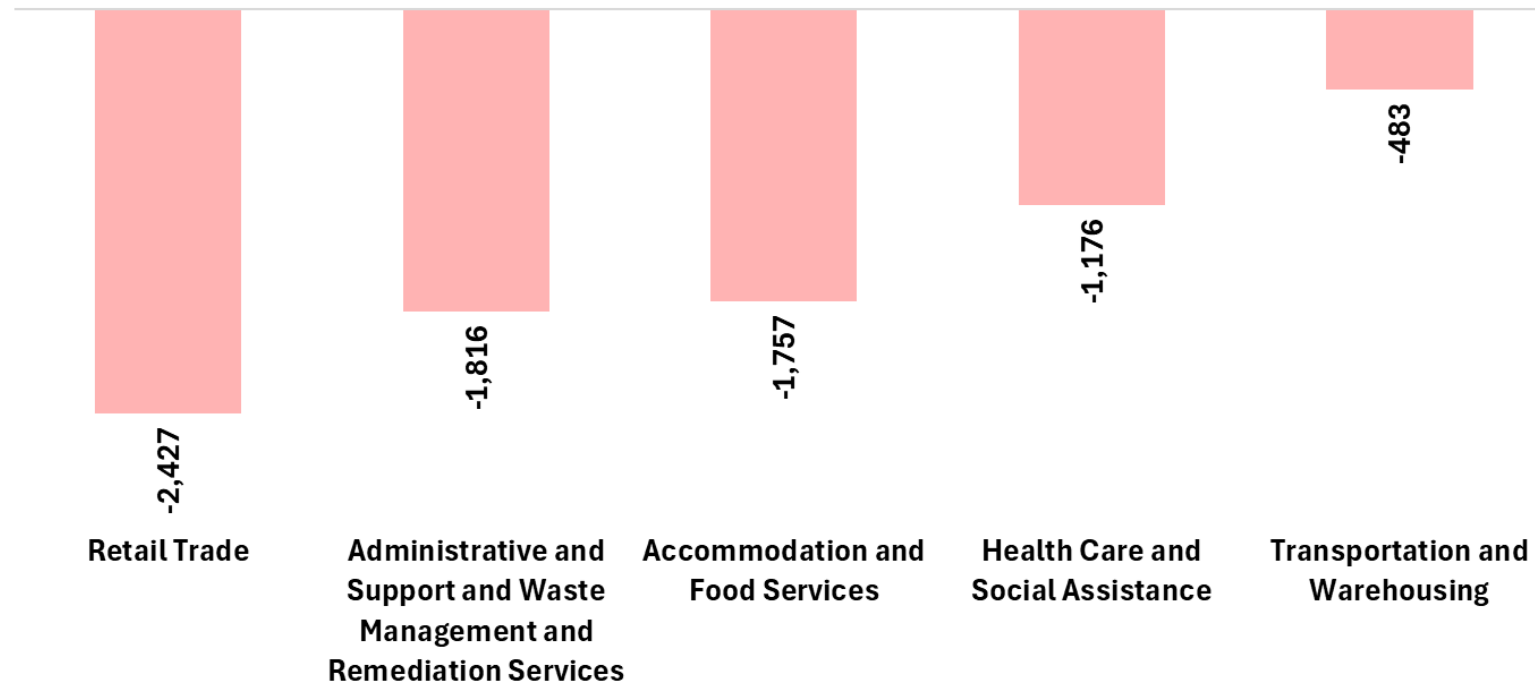


Are Jobs
Leaving
New
Jersey?

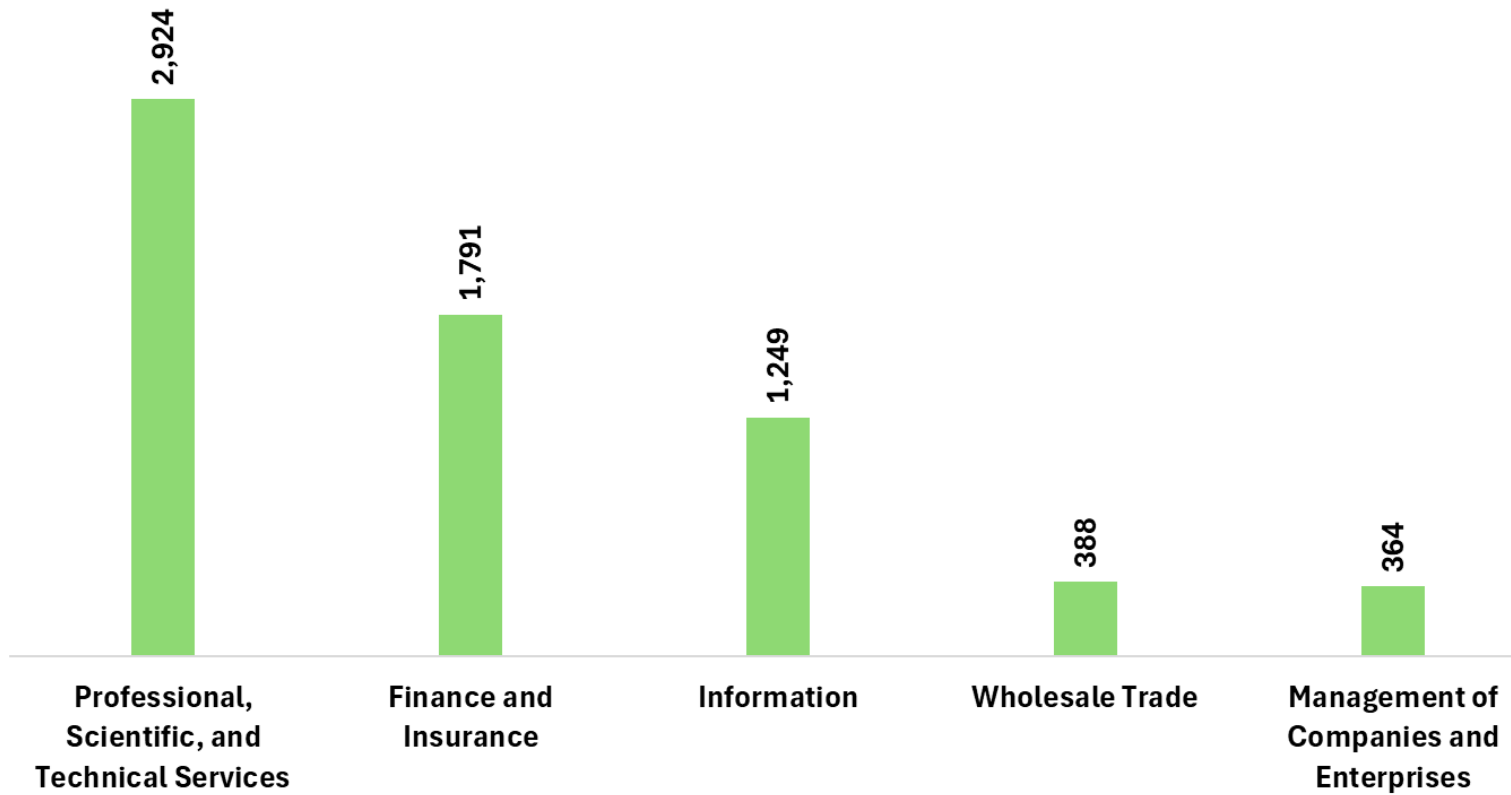
Job-to-Job Net Flow to and from New Jersey by Destination State in 2023



Top 5 Job-to-Job Industries with Negative Net Flow to and from New Jersey, 2023



Top 5 Job-to-Job Industries with Positive Net Flow to and from New Jersey, 2023





New Jersey's Job Loss Is Minimal

- Total establishment employment: ≈ 4.4 million
 - The decrease of 2,280 jobs represents 0.05% of total employment.
- Private establishment employment: ≈ 3.8 million
 - The decrease of 2,280 jobs represents 0.06% of private employment.

Takeaways



Measure workforce dynamics



Test hypotheses



Assess if a policy is needed, or evaluate proposed or current policies

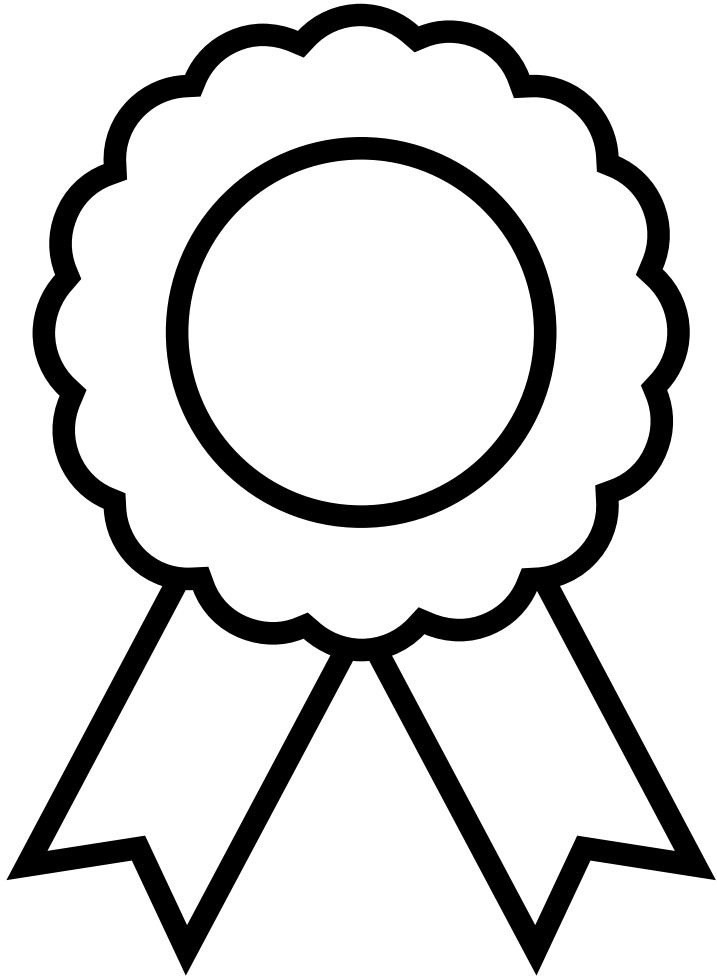
2024-25 NJDOL Publications

- [Labor Market Spotlight: Celebration Season: The Industries Powering New Jersey's Special Moments](#) (August 2025)
- [NJ's Health Care Sector](#) (June 2025)
- [Real-Time Insights: Analysis of Job Posting Data in New Jersey](#) (May 2025)
- [Business Employment Dynamics](#) (May 2025)
- [Survey of Occupational Injuries and Illnesses \(SOII\)](#) (April 2025)
- [Labor Market Spotlight - Fortune 500 Companies](#) (Issue No. 25, Volume 3: March 2025)
- [Labor Market Spotlight - Young Adult Workforce](#) (Issue No. 24, Volume 3: January 2025)
- [Labor Market Spotlight - Celebrating New Jersey's Veterans](#) (Issue No. 23, Volume 2: November 2024)
- [Labor Market Spotlight – The Blueprint of Innovation: Key Insights for New Jersey's Manufacturing Sector](#) (Issue No. 22, Volume 2: October 2024)
- [Private Early Care and Education Centers: Industry and Workforce Highlights](#) (Issue No. 21, Volume 2: September 2024)
- [A Profile of New Jersey's Hispanic Residents](#) (Issue No. 20, Volume 2: September 2024)
- [Logistics Hub: New Jersey's Leading Role in Warehousing](#) (Issue No. 19, Volume 2: September 2024)
- [Apprenticeships: First Step on a Career Path](#) (Issue No. 18, Volume 2: June 2024)
- [Celebrating New Jersey's Asian American, Native Hawaiian and Pacific Islander Residents](#) (Issue No. 17, Volume 2: May 2024)
- [Summer Spotlight on the Jersey Shore](#) (Issue 16, Volume 2: May 2024)
- [Celebrating the Garden State's Green Economy](#) (Issue No. 15, Volume 2: April 2024)

Join Our Mailing List!

- Link: nj.gov/labor/subscribetoori





2025 Report Overview and Subscription Information

This report was prepared by the Office of Research and Information, Division of Economic & Demographic Research. This division collects and disseminates vital data on employers, employees, and population demographics.

Dr. Nicol Nicola, DBA
nicol.nicola@dol.nj.gov
<https://www.linkedin.com/in/nicolnicola/>



Source

- Link to the data:
<https://lehd.ces.census.gov/announcements.html#082625>