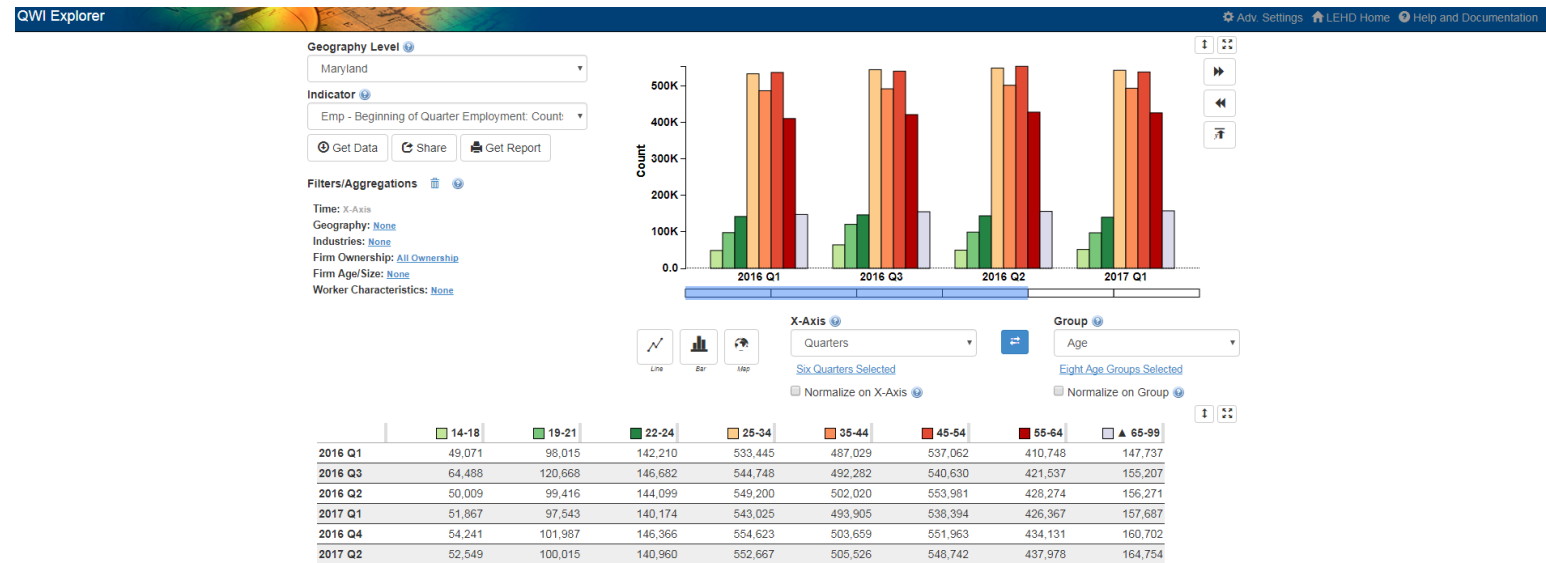




QWI Explorer

- ✓ 32 Quarterly Workforce Indicators
- ✓ Flexible Pivot Table and Map/Chart interface
- ✓ Data on detailed interactions between firms and workers include employment, employment change (individual and firm), and earnings
- ✓ Analyze/report by worker demographics: age, earnings, race, ethnicity, educational attainment, and sex



- ✓ Analyze/report by firm characteristics: NAICS classification (sector, 3, 4), firm age, and firm size
- ✓ Quarterly data very current (9-12 months old)
- ✓ National and 50 states available (plus DC)

America Counts



**Bridge Collapse
Could Affect Over a
Million People in
Baltimore Area**



// [Census.gov](#) / [America Counts: Stories](#) / [Bridge Collapse Could Affect Over a Million People in Baltimore Area](#)

**Census Bureau Data Show Number of Residents,
Workers, Businesses That Could Be Affected by
Bridge Disaster**



Workers in Baltimore City and County

- [2022 American Community Survey \(ACS\) 1-year estimates](#), 745,713 people worked in Baltimore City and County.
- There were nearly 32,626 business establishments in Baltimore city and County, according to the [2021 County Business Patterns](#).



QWI Explorer

Geography Level

Maryland

Indicator

Emp - Beginning of Quarter Employment: Coun'

Get Data Share Get Report

Filters/Aggregations

Time: Group

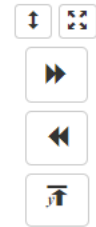
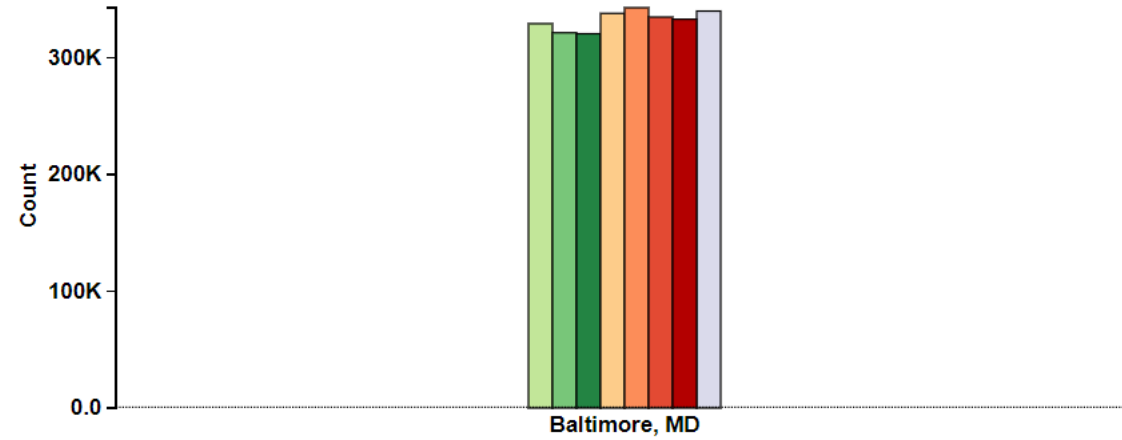
Geography: X-Axis

Industries: [None](#)

Firm Ownership: [All Private Ownership](#)

Firm Age/Size: [None](#)

Worker Characteristics: [None](#)



X-Axis

Counties

[One Counties Selected](#)

Normalize on X-Axis

Group

Quarters

[Eight Quarters Selected](#)

Normalize on Group



	2021 Q4	2022 Q1	2022 Q2	2022 Q3	2022 Q4	2023 Q1	2023 Q2	2023 Q3
Baltimore, MD	329,133	321,346	320,501	337,944	342,787	334,773	332,896	339,898



Earnings in Baltimore County

Geography Level

Maryland

Indicator

EarnS - Full Quarter Employment (Stable): Aver

Get Data

Share

Get Report

Filters/Aggregations

Time: Group

Geography: X-Axis

Industries: [None](#)

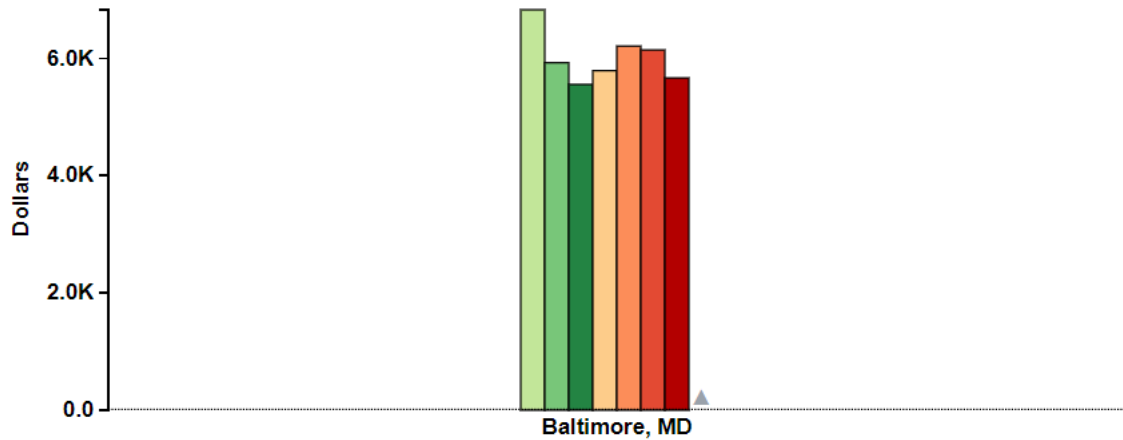
Firm Ownership: [All Private Ownership](#)

Firm Age/Size: [None](#)

Worker Characteristics: [None](#)

QWI Status Flags

Data not available to compute this estimate.



X-Axis

Counties

[One Counties Selected](#)

Normalize on X-Axis

Group

Quarters

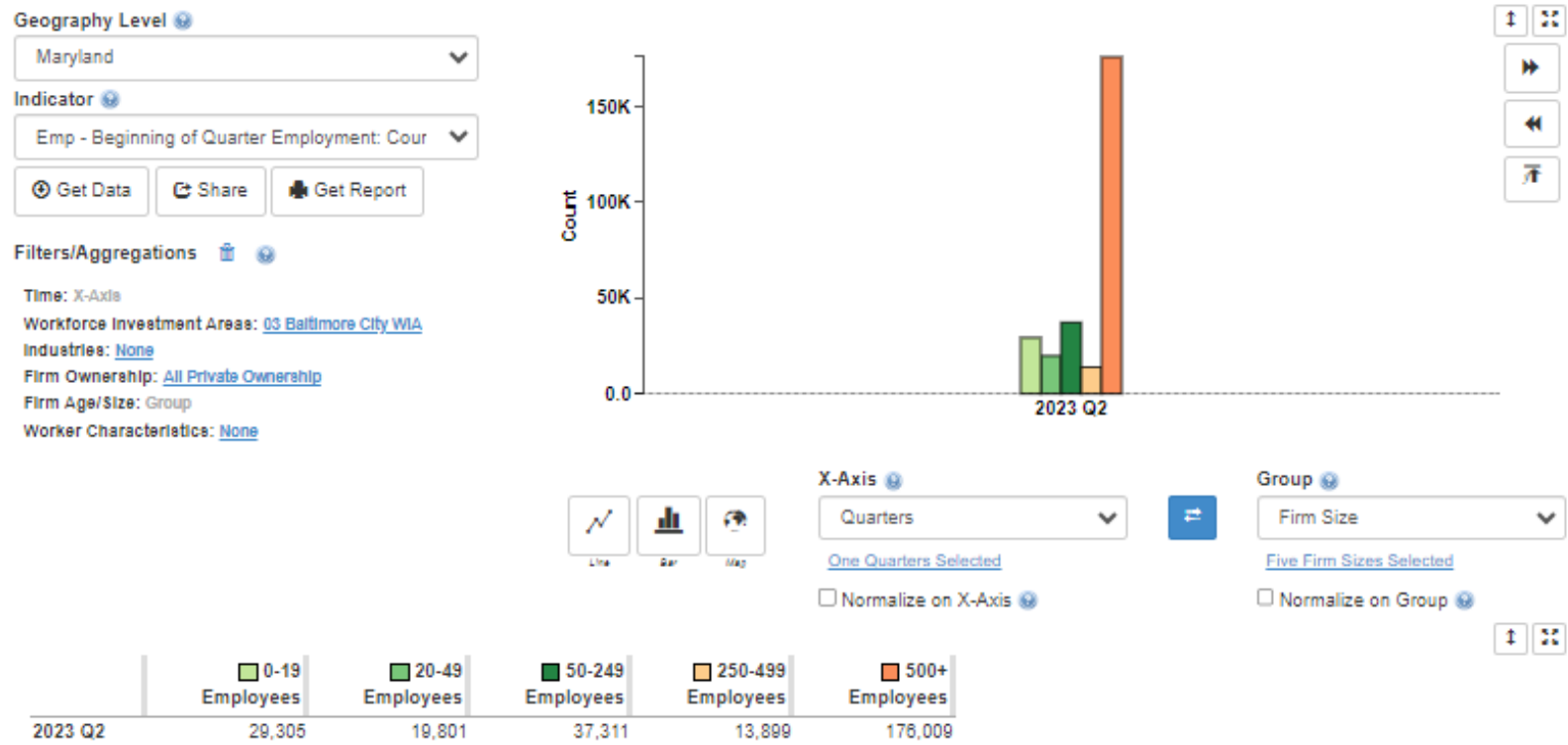
[Eight Quarters Selected](#)

Normalize on Group

	2021 Q4	2022 Q1	2022 Q2	2022 Q3	2022 Q4	2023 Q1	2023 Q2	2023 Q3
Baltimore, MD	6,822	5,919	5,549	5,784	6,203	6,137	5,660	-

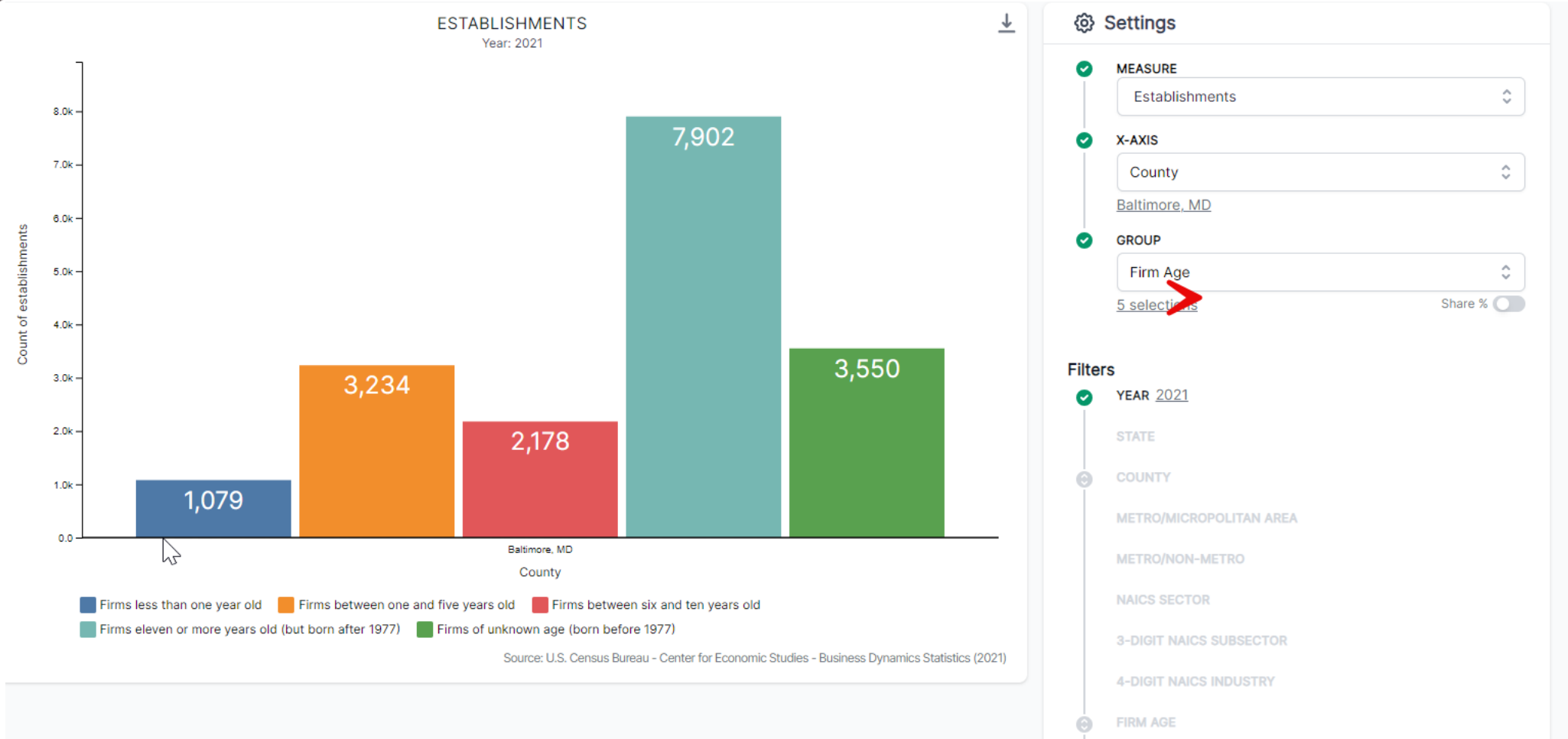


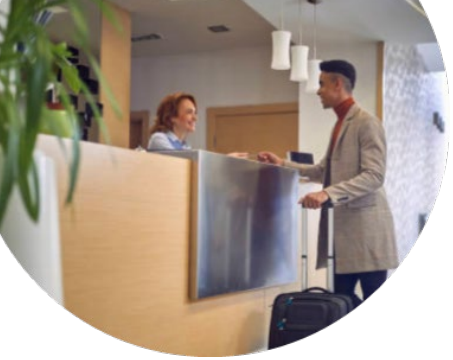
Firm Size





Bonus: BDS Explorer





Let's go live!



LED Webinar Series

WEBINAR
Has the Gender Gap Improved Since COVID-19?

SAVE THE DATE
May 22 @ 1:30PM ET



Maggie Smith
Research Analyst, North Carolina
Department of Commerce



[Has the Gender Gap Improved Since Covid-19? \(census.gov\)](https://www.census.gov/led/webinars/has-the-gender-gap-improved-since-covid-19)

[Local Employment Dynamics \(LED\) Webinar Series \(census.gov\)](https://www.census.gov/led/webinars)



Resources

QWI Explorer Help and Documentation

- https://lehd.ces.census.gov/applications/help/qwi_explorer.html#!what_is_qwi_explorer

QWI Video Walk Through

- https://lehd.ces.census.gov/applications/help/qwi_explorer.html#!video_walkthrough

QWI Example Scenarios

- https://lehd.ces.census.gov/applications/help/qwi_explorer.html#!example_scenarios

QWI Training from 2023 LED Partnership Virtual Workshop

- https://lehd.ces.census.gov/doc/workshop/2023/QWI_Training_Recording_2023.mp4

Design Comparison of LODES and ACS

- <https://ideas.repec.org/p/cen/wpaper/14-38.html>

Q & A and Thank You!

Contact Information:

Earlene K.P. Dowell

Earlene.KP.Dowell@census.gov

And

Andrew D. Bennett

Andrew.D.Bennett@Census.gov

To schedule additional training with a Census Data
Dissemination Specialist in your area, please call **844-ASK-DATA**

Or email us at: **census.askdata@census.gov**