

OntheMap and Minimum Wage Workers

Using the Census LED
application to better
understand low wage
workers in the
Commonwealth of
Virginia.



Minimum Wage Workers Across Virginia

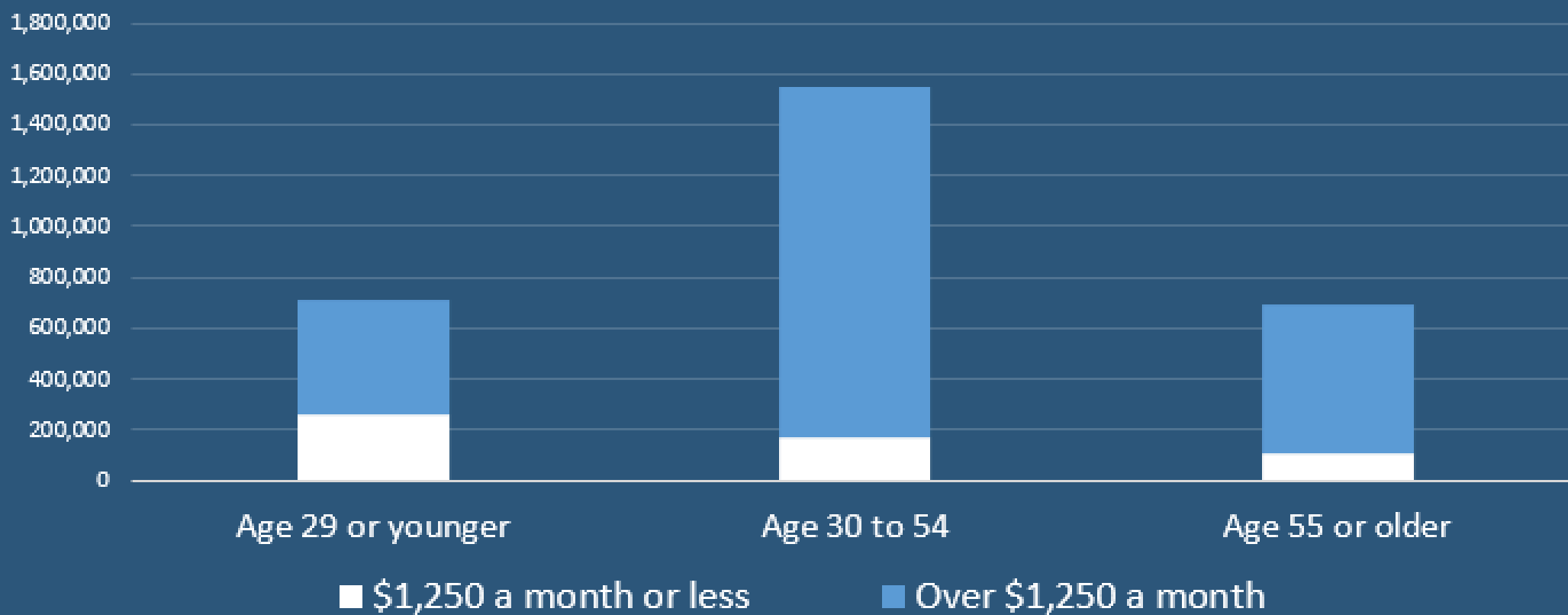
- I have defined minimum wage, or low wage workers, as workers earning \$1,250 or less per month in 2019.
- The data is a count of private sector, primary jobs. Over 500,000 jobs (18%) in Virginia in 2019



At 36%, Younger Private Sector Workers in Virginia Were More Likely to Have a Low-wage, primary job

IN 2019, OVER A QUARTER OF A MILLION PRIMARY, PRIVATE SECTOR JOBS PAID \$1,250 A MONTH OR LESS, WHICH COORESpondS TO \$7.25 AN HOUR.

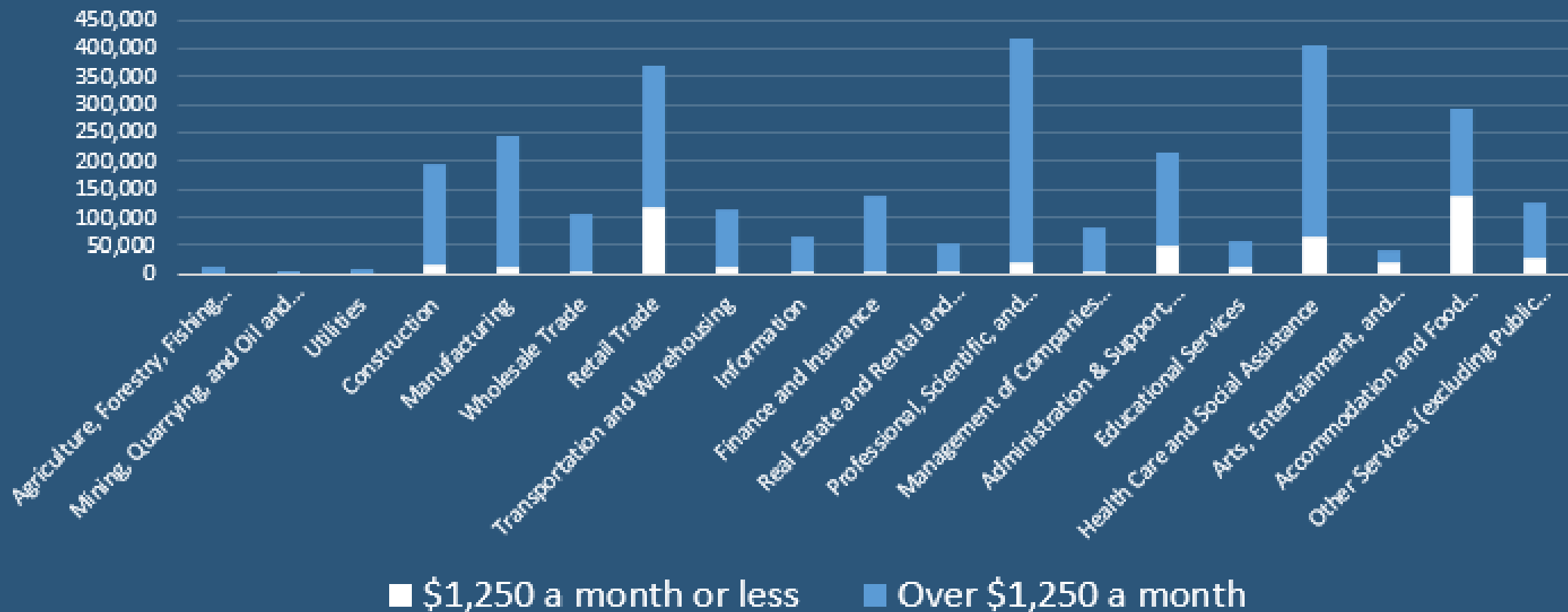
Chart Title



The Virginia Accommodation and Food Industry Had the Largest Number of Low Wage Workers

NEARLY 140,000 JOBS IN THAT INDUSTRY PAID \$1,250 A MONTH OR LESS BUT ARTS/ENTERTAINMENT/RECREATION HAD THE HIGHEST CONCENTRATION.

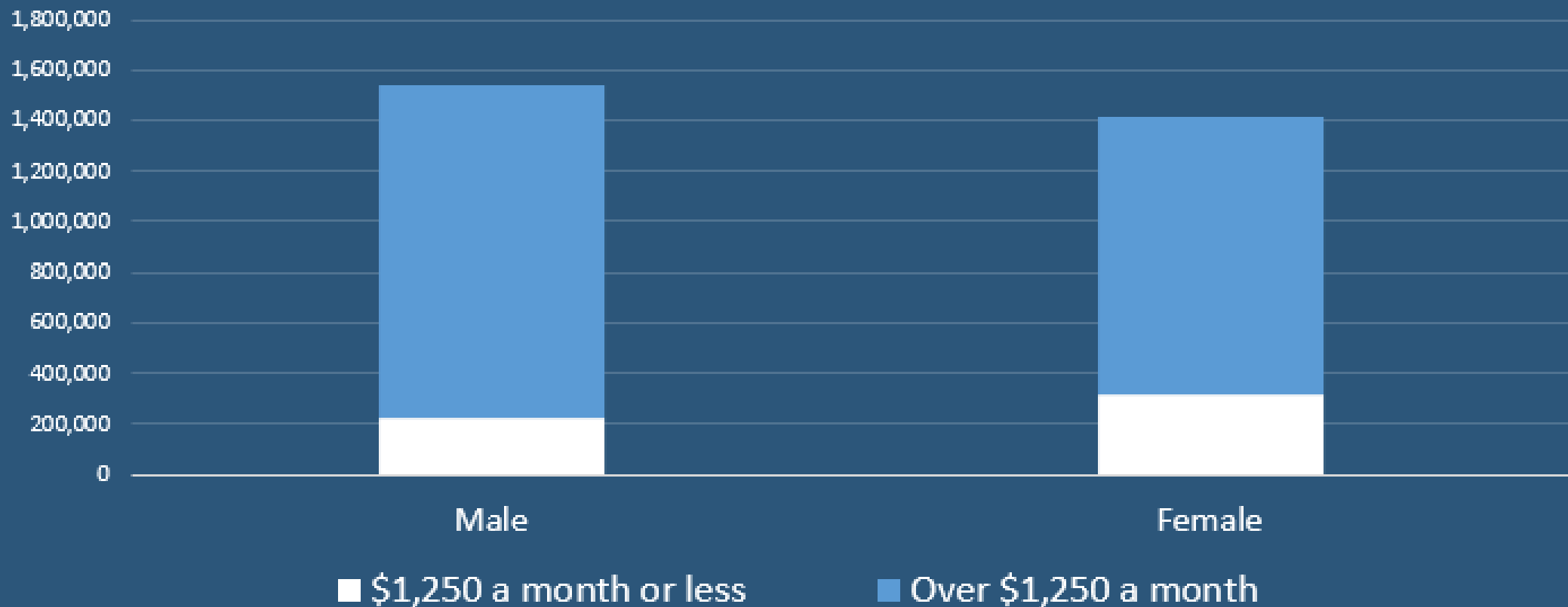
Chart Title



At 22%, Female Private Sector Workers in Virginia Were More Likely to Have a Low-wage, Primary Job

IN 2019, OVER 300,000 FEMALE WORKERS WORKED IN PRIMARY PRIVATE JOBS THAT PAID \$1,250 A MONTH OR LESS, OR NEARLY 60% OF LOW WAGE JOBS.

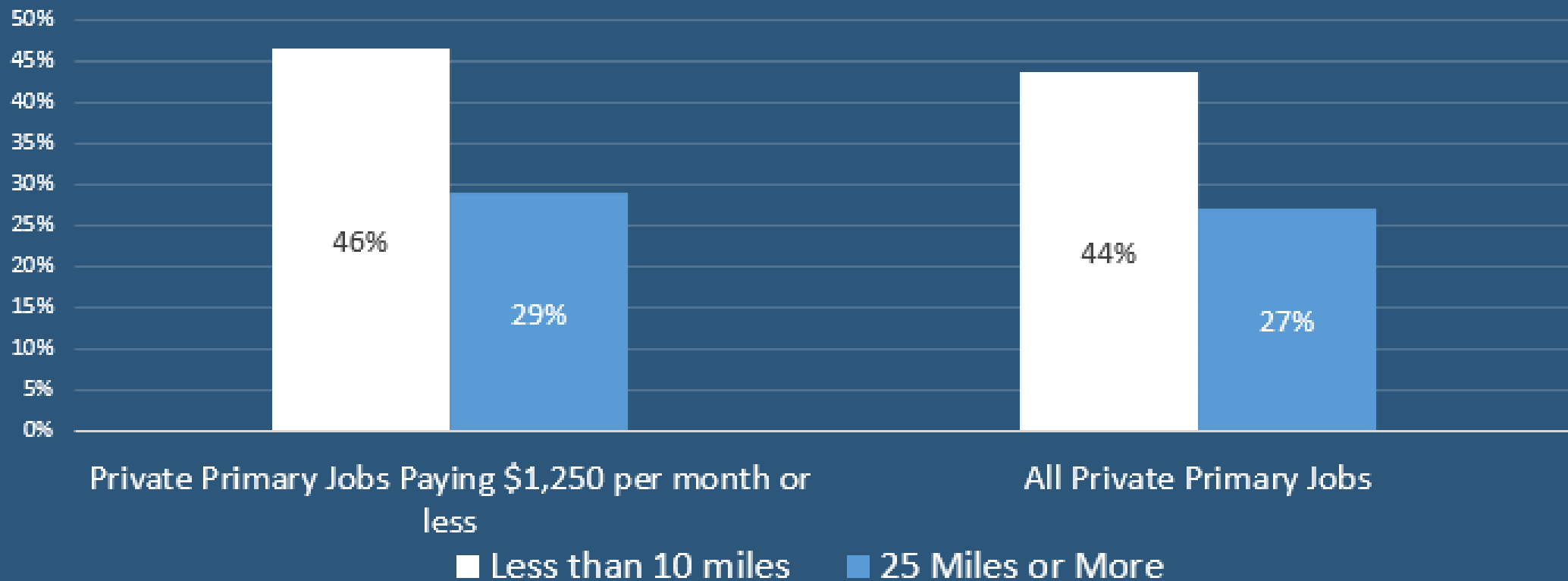
Chart Title



Nearly Half of Low Wage Workers in Private Sector, Primary Jobs Commuted Less than Ten Miles to Work

IN 2019, A QUARTER MILLION WORKERS HAD A SHORT COMMUTE BUT NEARLY 30% DROVE 25 MILES OR MORE—A HIGHER PERCENTAGE THAN OVERALL.

Chart Title



The Northern Virginia LWDA Had the Largest Number of Low Wage Workers, yet Had a Lower Concentration

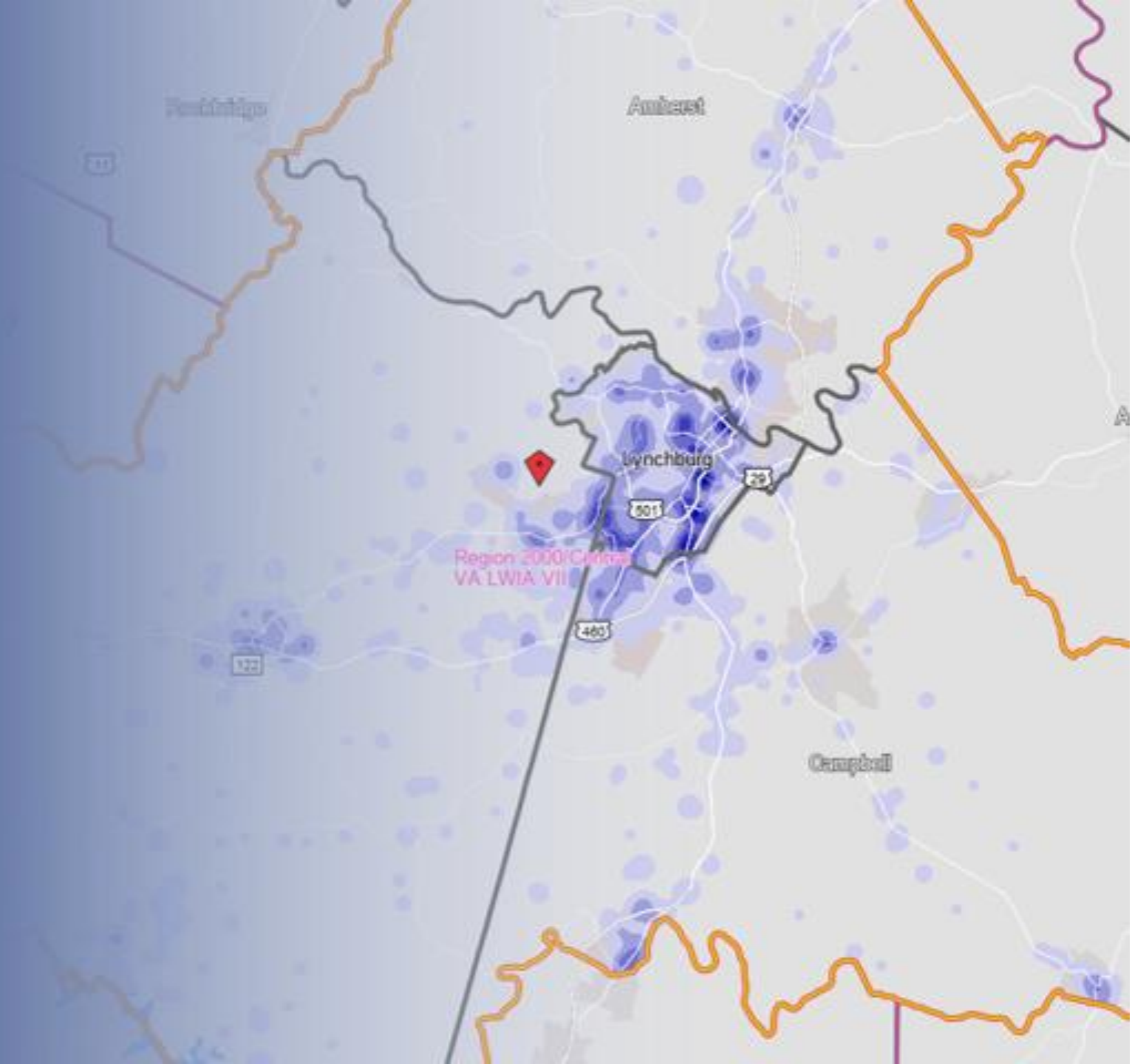
113,000 PRIVATE, PRIMARY JOBS IN THAT REGION PAID \$1,250 A MONTH OR LESS BUT HAMPTON ROADS AND RICHMOND HAD HIGHER CONCENTRATIONS.

Chart Title



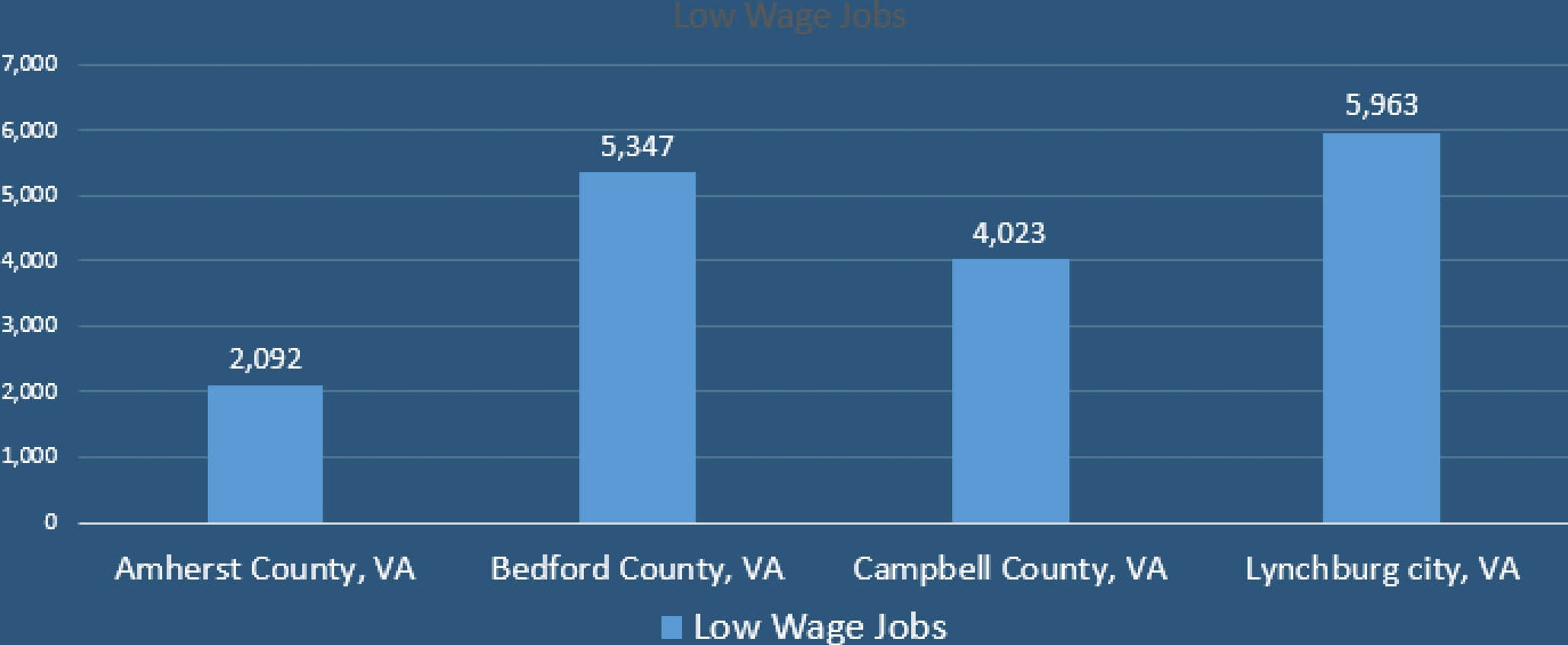
OntheMap and Regional Analysis

- Region 2000 Central Virginia WIA
- Low wage employers are centered in Lynchburg, VA
- 17,400 private, primary jobs in 2019



Lynchburg had the Largest Number of Low Wage Jobs in Region 2000

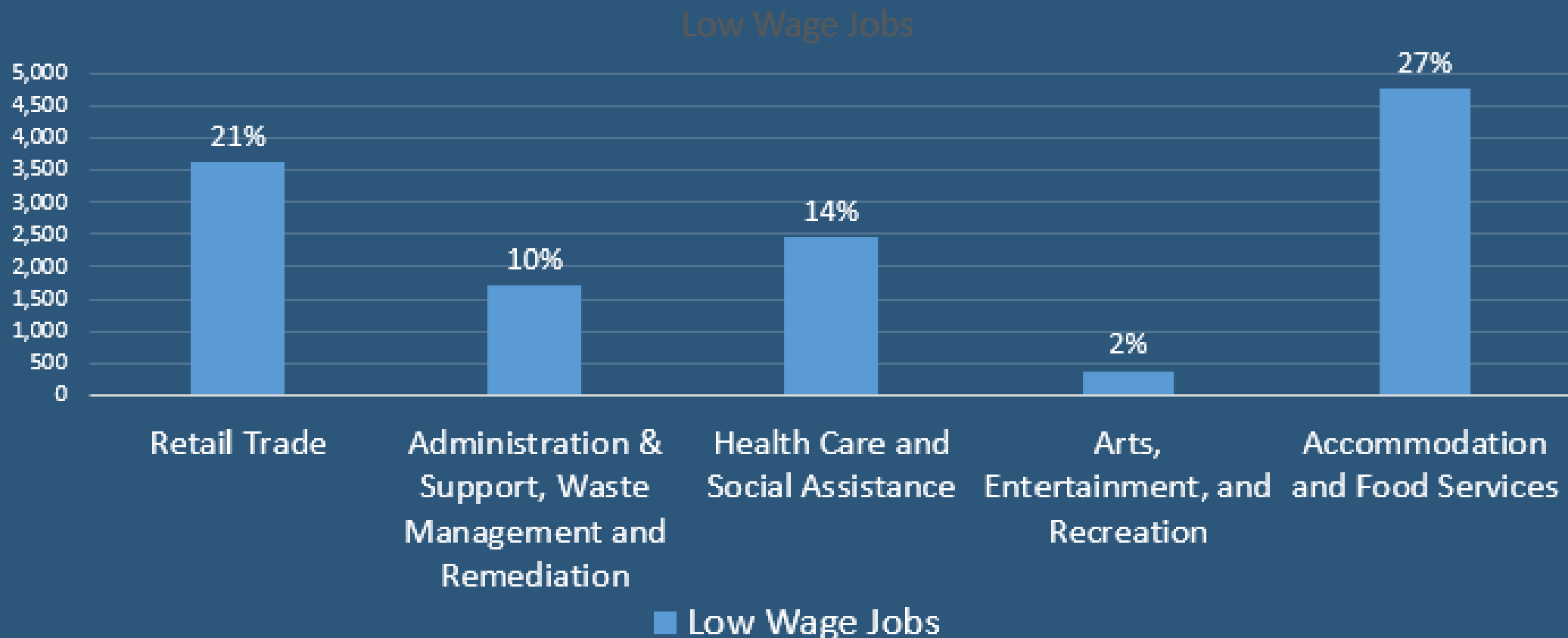
THE PRESENCE OF EDUCATION AND HEALTHCARE SERVICES BOOSTED JOBS FOR FEMALE AND YOUNG WORKERS.



U.S. Census Bureau. LEHD OntheMap Data (2019). Washington, DC: Longitudinal-Employer Household Dynamics Program, accessed on March 14, 2023 at <https://onthemap.ces.census.gov/>. Lodes Data Version 20211018_1647.

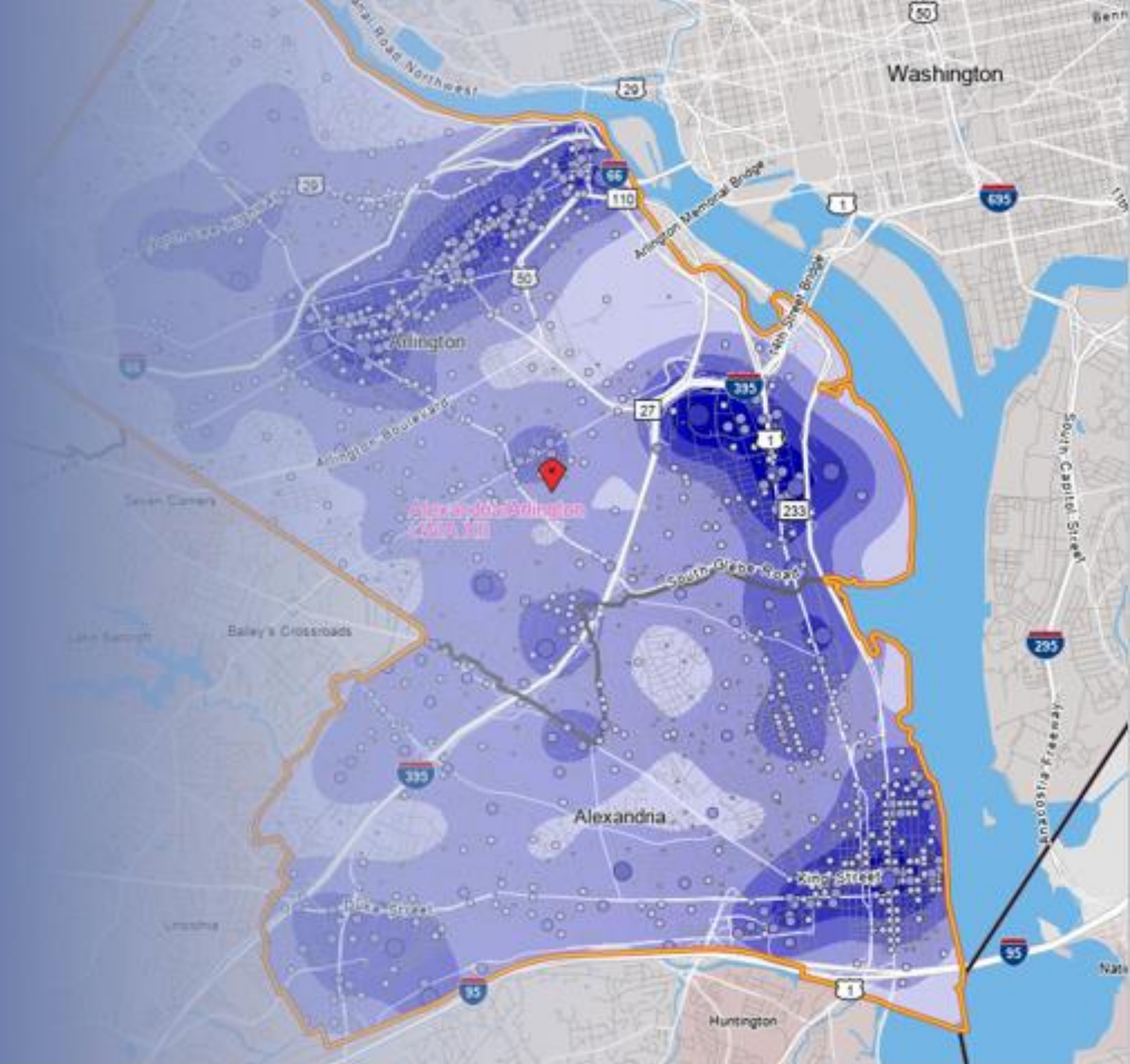
In Region 2000, Recreation Not a Key Source of Low Wage Jobs while Healthcare Third Most Important

IN 2019, THERE WERE NEARLY 2,500 LOW WAGE JOBS IN HEALTHCARE/SOCIAL ASSISTANCE.



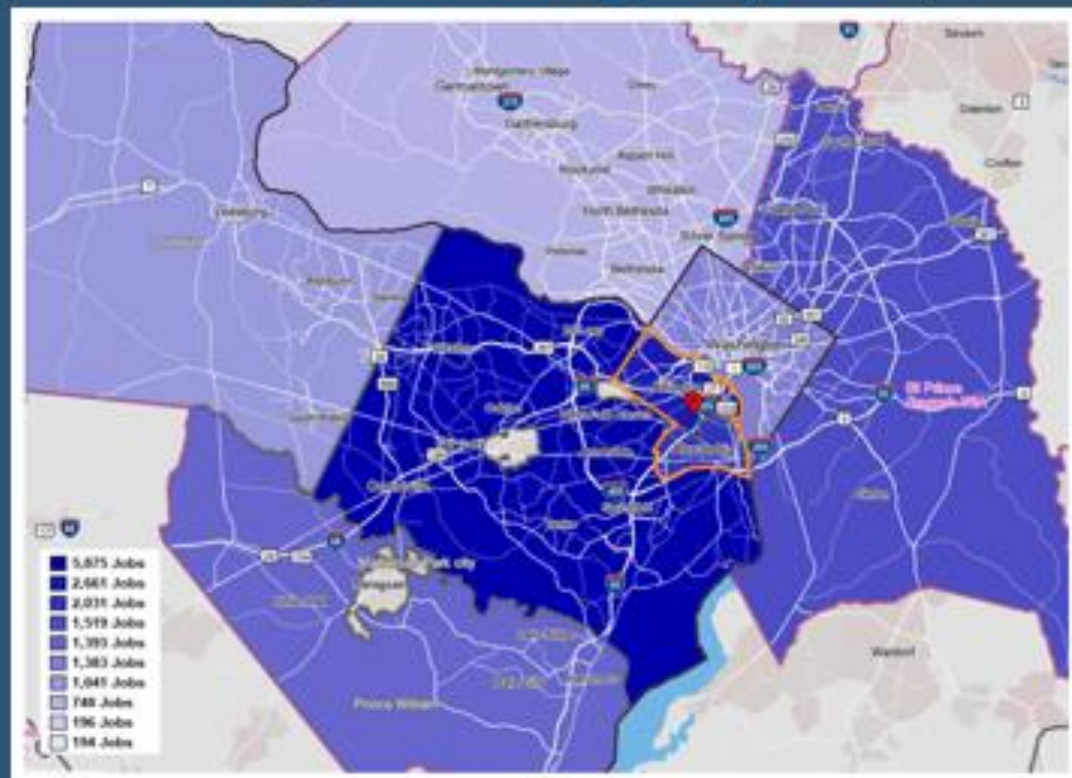
OntheMap and Commuting Patterns in a Region

- The Arlington/Alexandria workforce investment area has a surprisingly large number of low paying jobs. Where did all of those workers live?
- The region is closely integrated with the larger, surrounding Washington-Arlington-Alexandria, D.C.-Va.-Md.-W.Va. Metropolitan Statistical Area

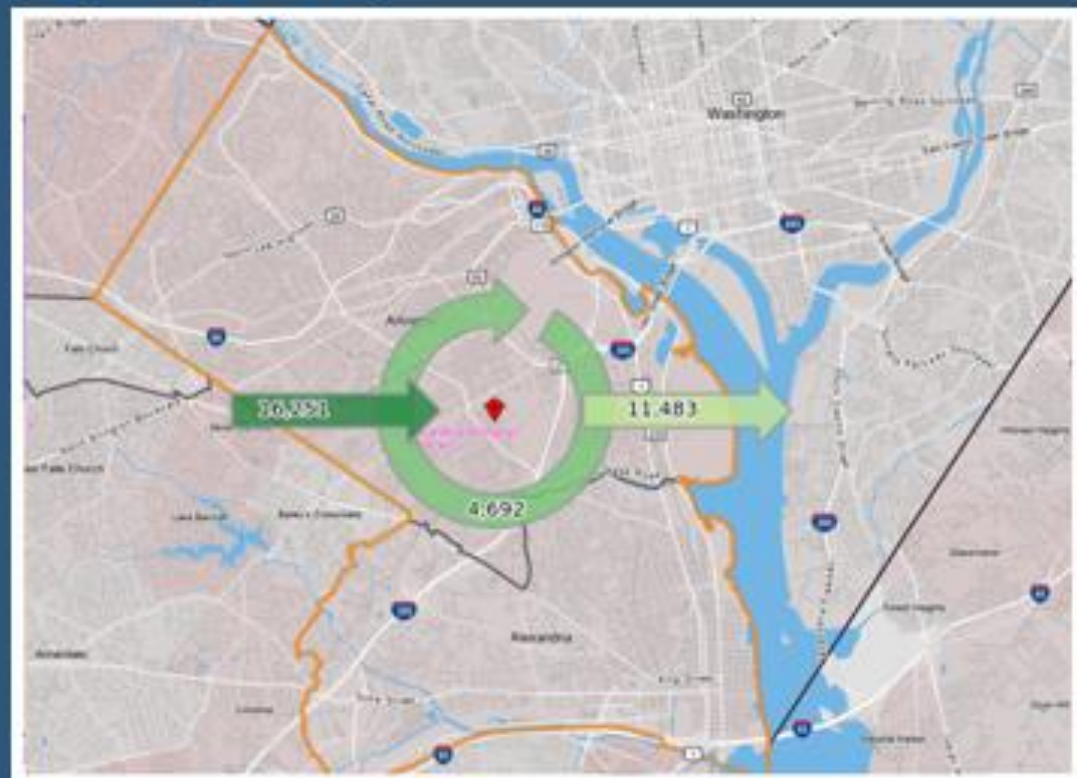


Over three quarters of low-wage workers in the region lived outside of the region.

Fairfax County had the most workers commuting into the region (5,875).



Only 22% lived and worked in the region (4,692).



Providing useful information on low wage workers is just one example of how OntheMap can inform decision making on a variety of labor market topics.



Mass layoff response –
Workforce services
professionals can use to find
out where workers in a
community commute from to
better match to close-by
employers.



Improving services – Planners
can use on projects like mass
transit, low income housing,
and education programming.



Business attraction –
Economic developers can use
to provide a more accurate
picture of a region's labor
shed and available labor
supply.



Economic Impact Analysis –
Analysts can use to get a fuller
picture of potential outcomes
of policies or events on
businesses and workers.

Thanks!



Timothy Aylor
Senior Economist
VEC, Economic Information and
Analytics Division
(804) 786-3976
timothy.aylor@vec.virginia.gov

Timothy has more than twenty years of public and private sector experience in producing, reviewing, and analyzing many of the most important economic data in the country as well as key state labor market statistics.

The opinions expressed are those of the presenter and do not represent those of the VEC or the U.S. Department of Labor.