

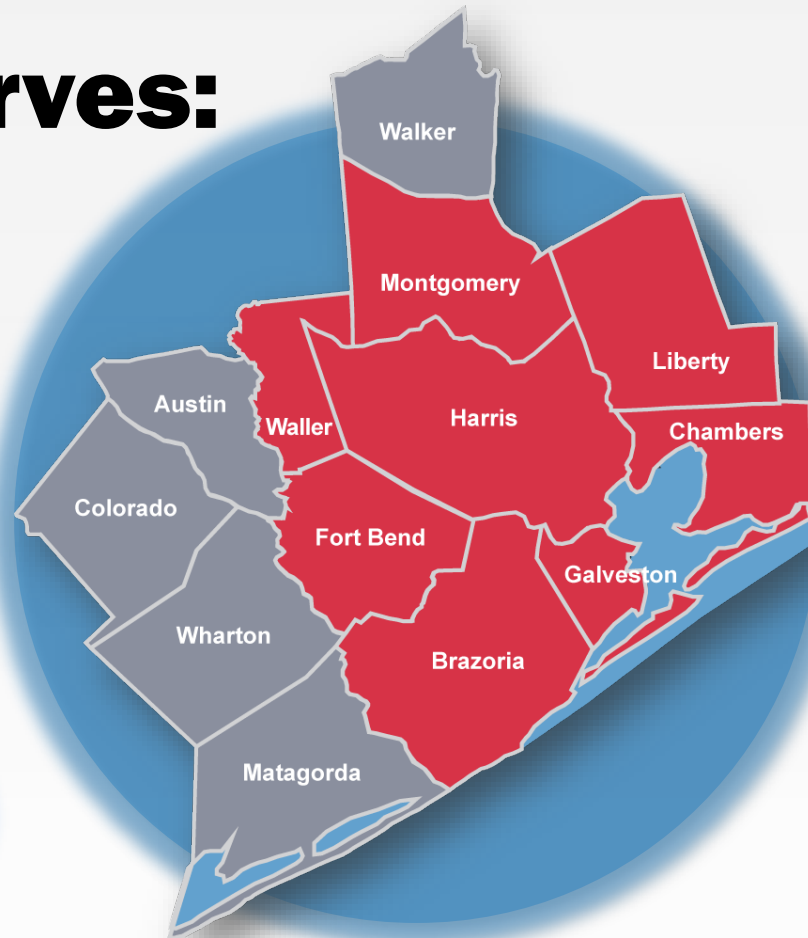
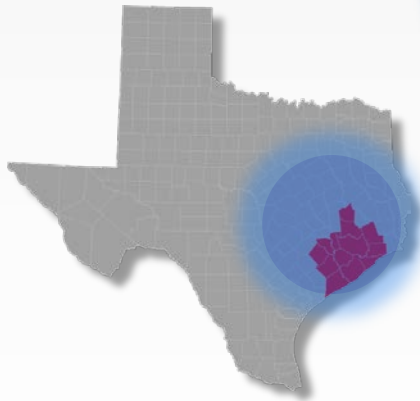
Interactive Web Mapping Applications for Planning

**Pramod Sambidi PhD
Houston-Galveston Area Council**

2017 Local Employment Dynamics (LED) Partnership Annual Workshop

H-GAC serves:

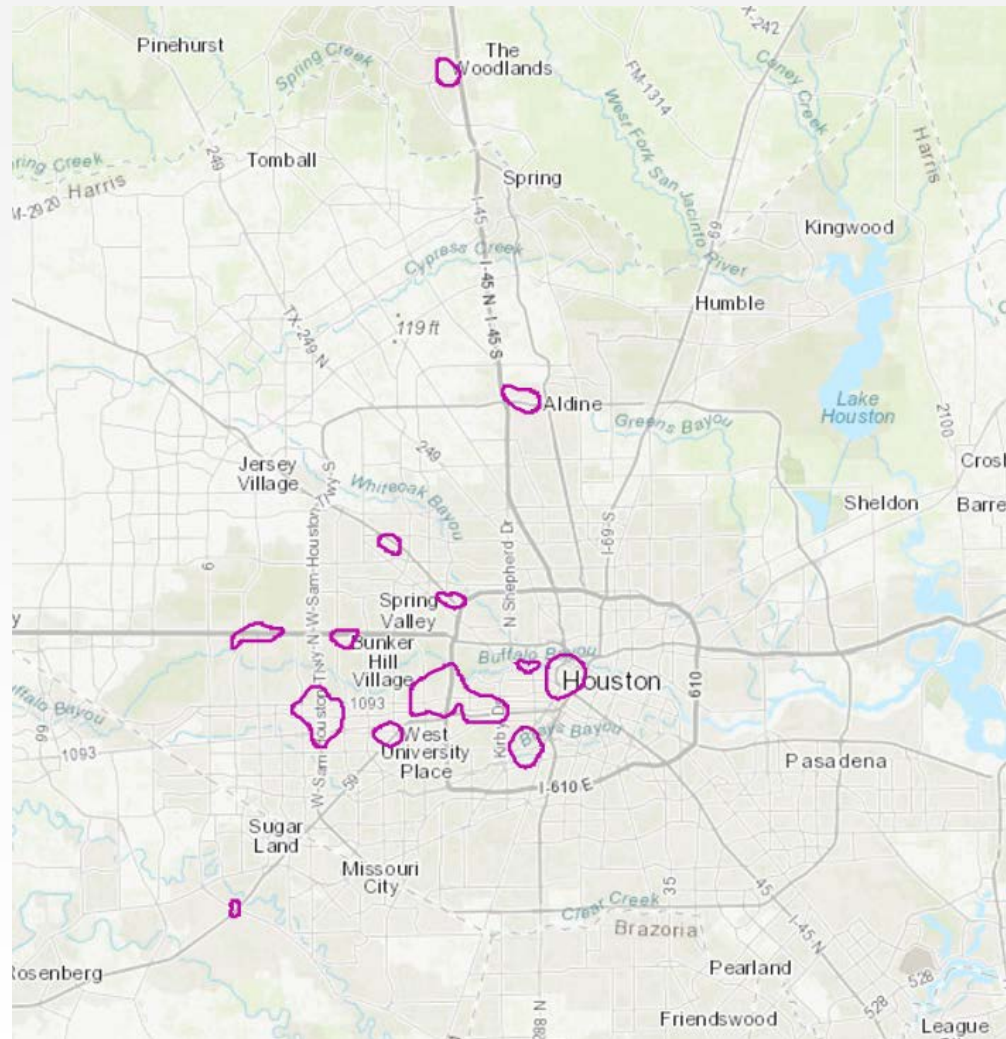
- 13 counties
- 134 cities
- 6.9 million people
- 3 million jobs
- MPO for **8-county metro area**



Application 1

{ **Commuting Patterns Tool** }

Houston- Employment Centers

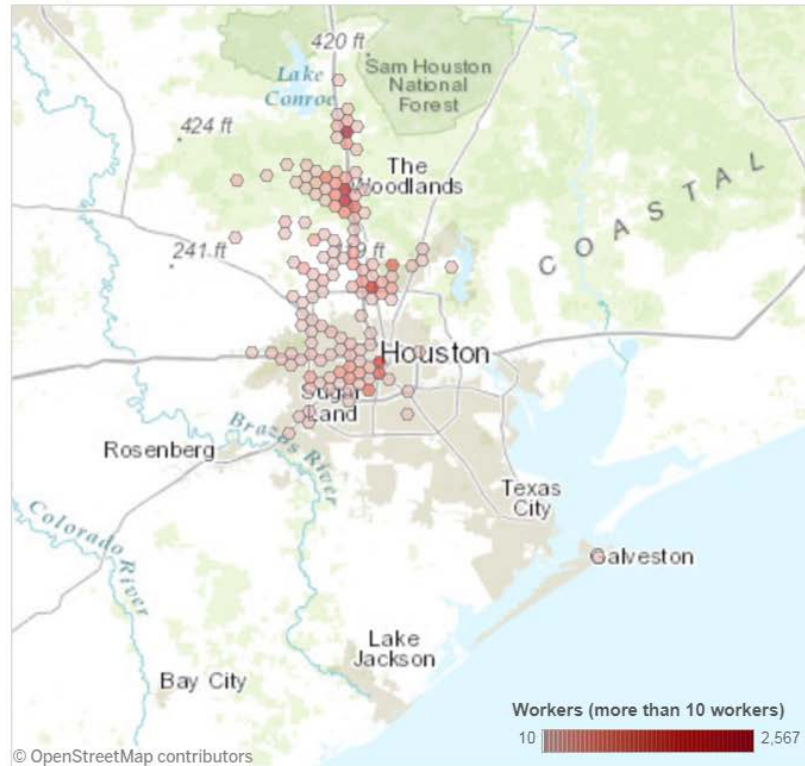


Overview

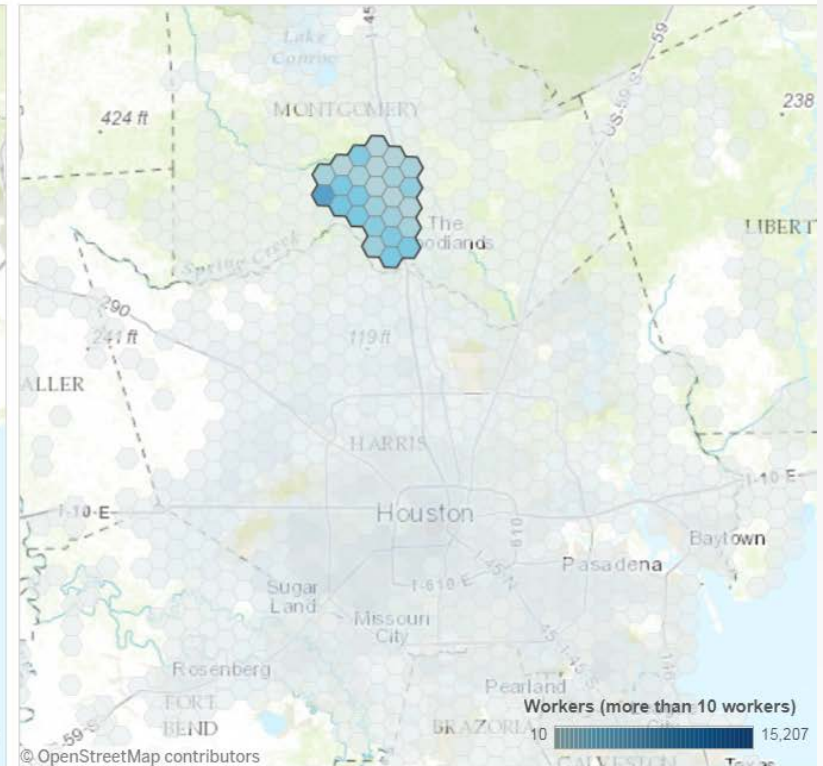
- Analyzes workers commuting patterns between home and workplace
- Data: US Census Longitudinal Employer-Household Dynamics (LEHD) Origin-Destination Employment Statistics (LODES)
- Geographic-level: Hexagon Grids, Census Tracts, Zip Codes, Regional Sections, and County
- Update: Annual
- Software/Tools : SAS, GIS, and Tableau

Example 1: The Woodlands

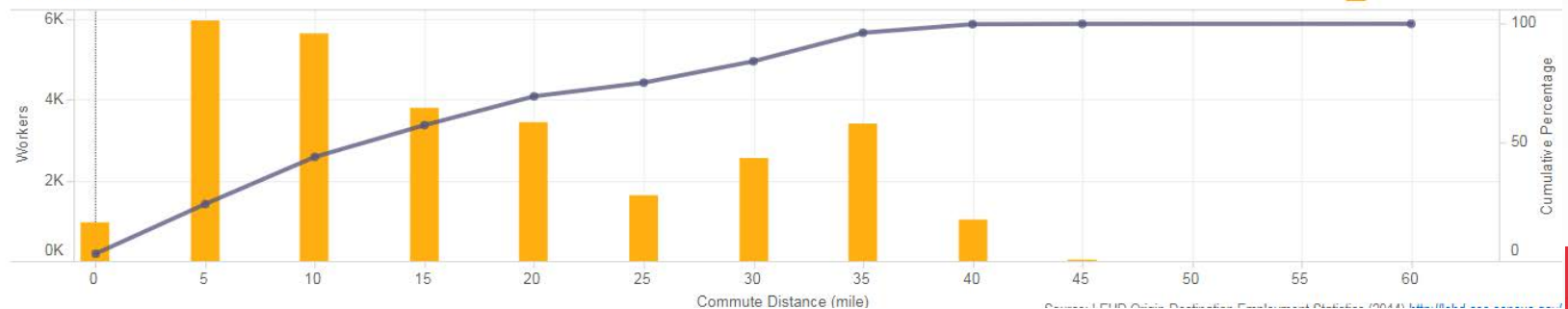
Workplace



Home

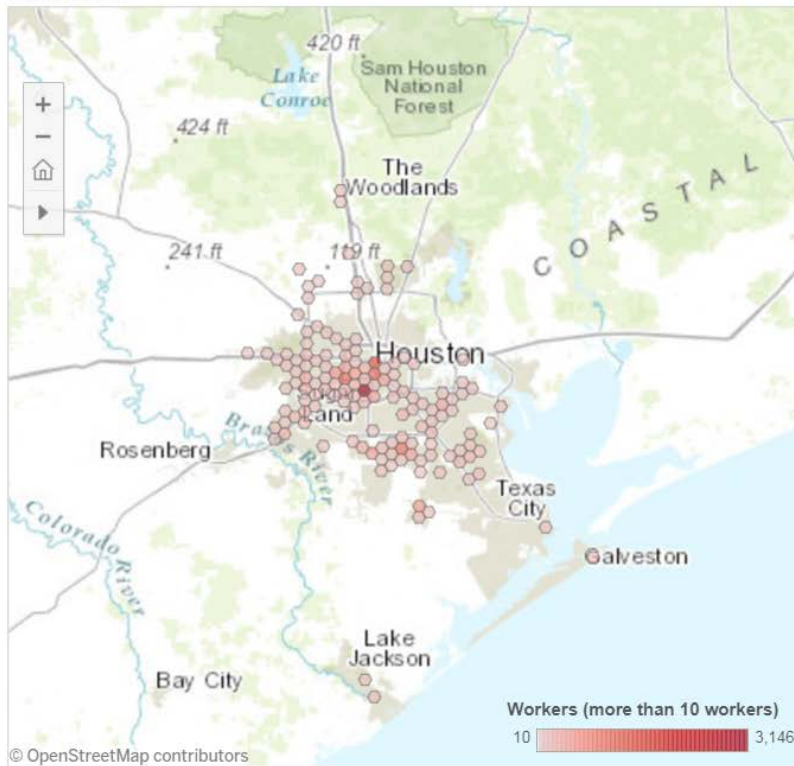


Commute Distance

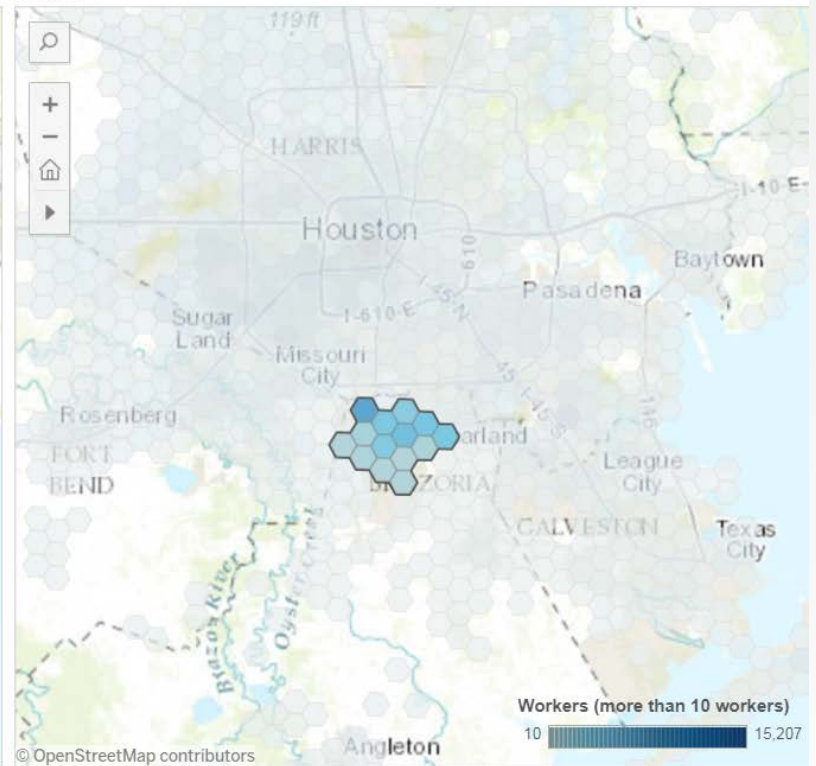


Example 2: Pearland

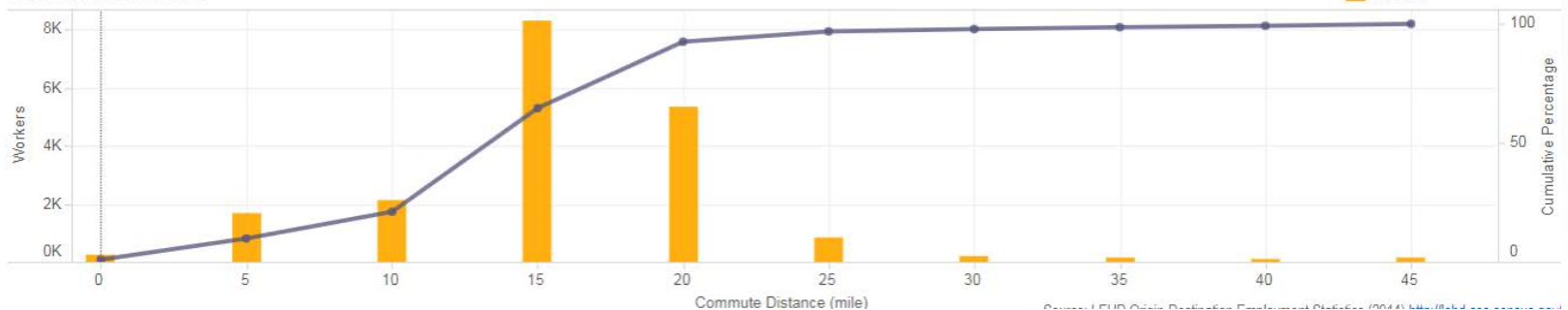
Workplace



Home

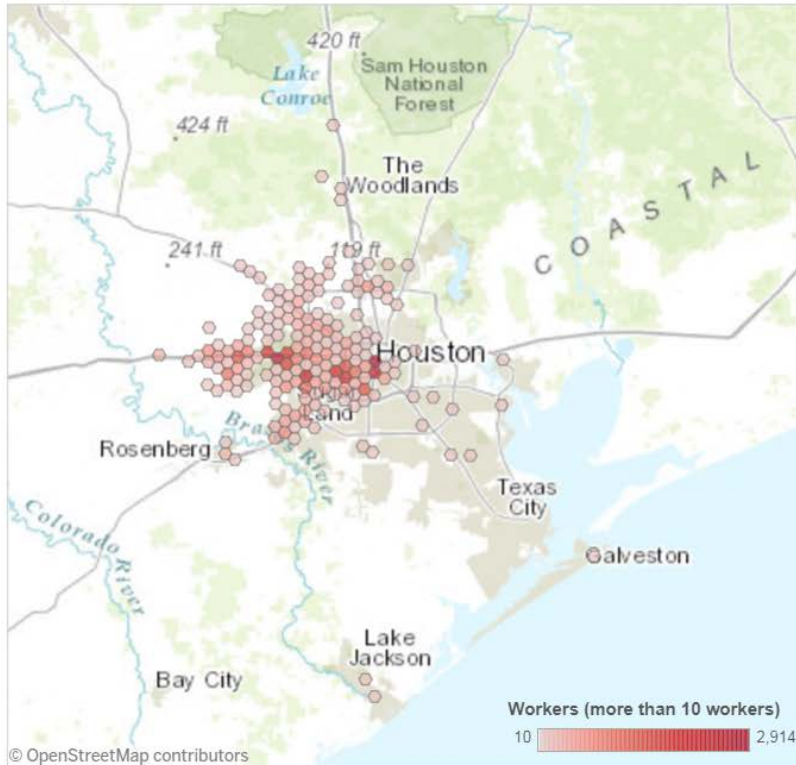


Commute Distance

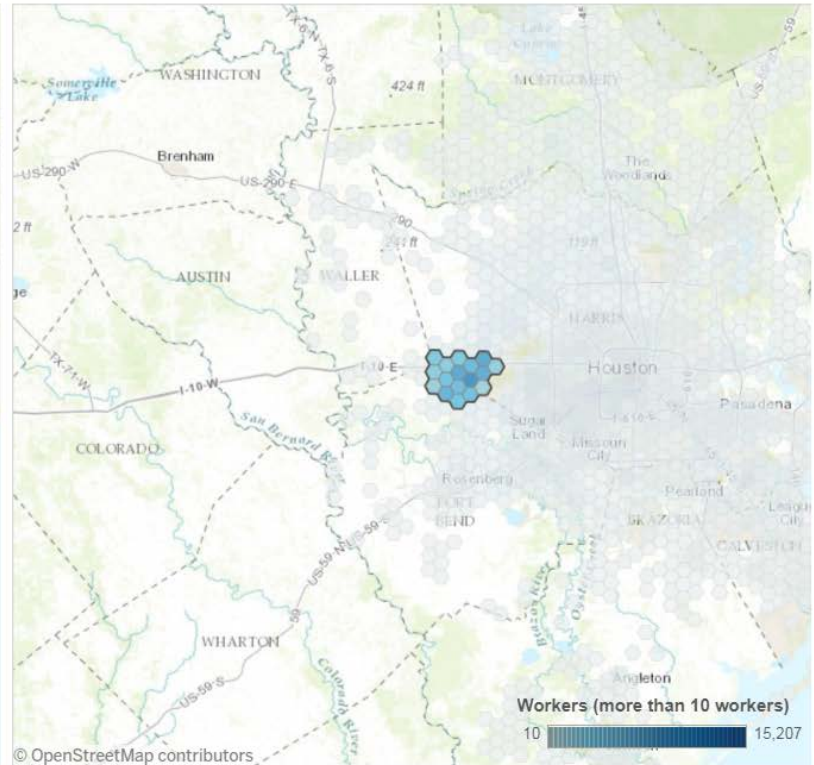


Example 3: Katy

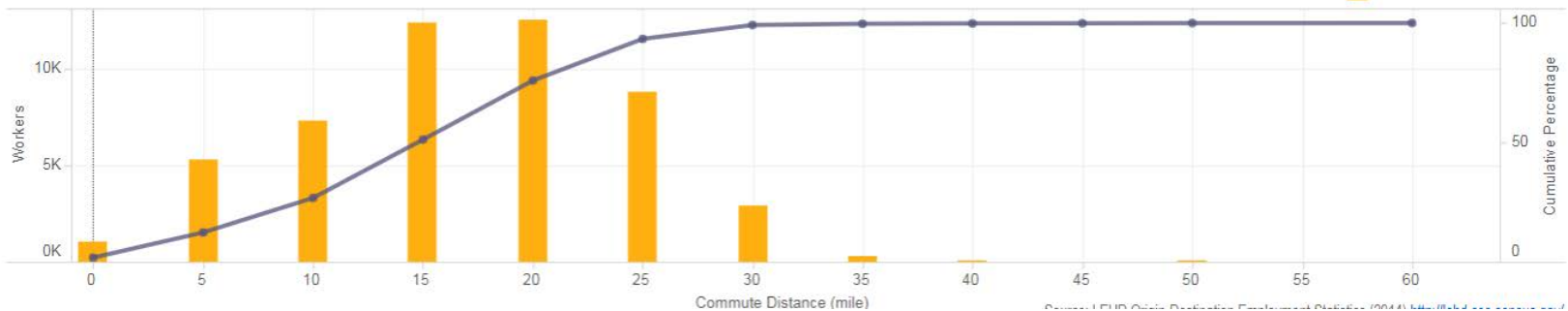
Workplace



Home

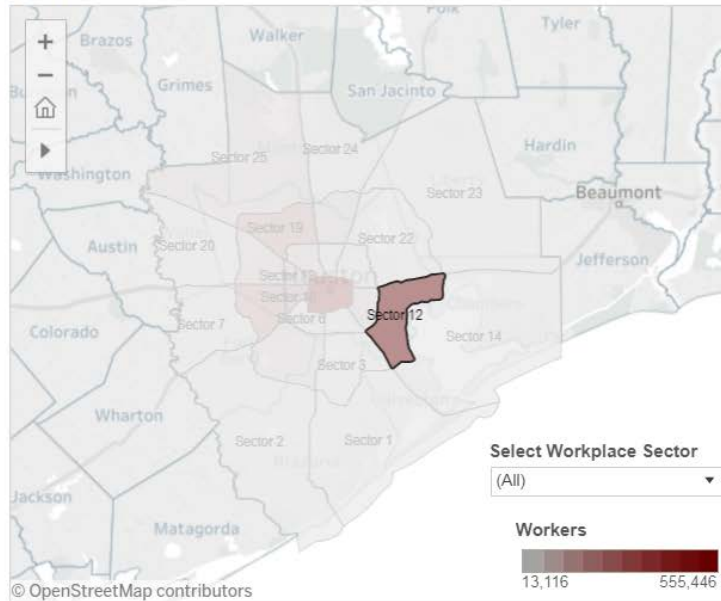


Commute Distance



Example 4: Sector 12

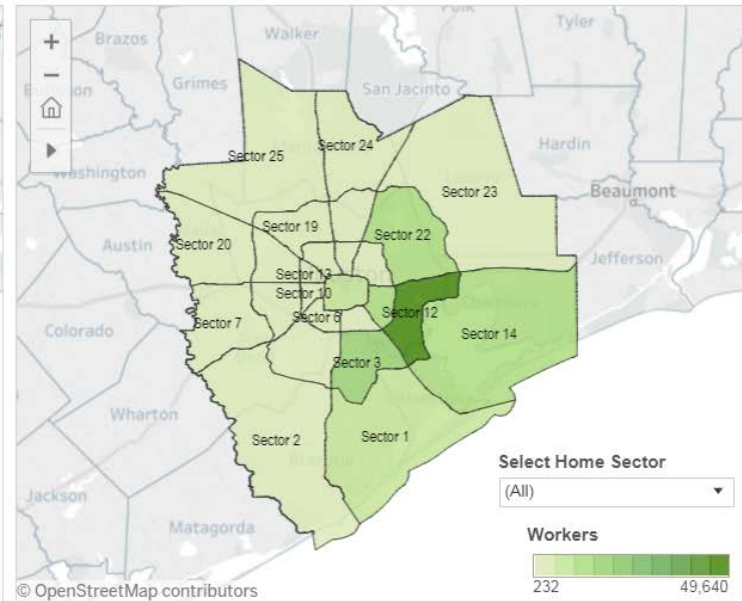
Workplace



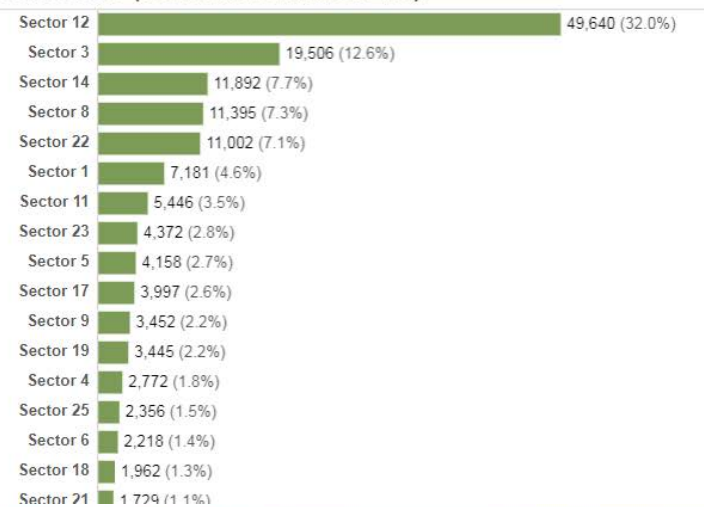
Sector Details (Where Most Workers Work)



Home

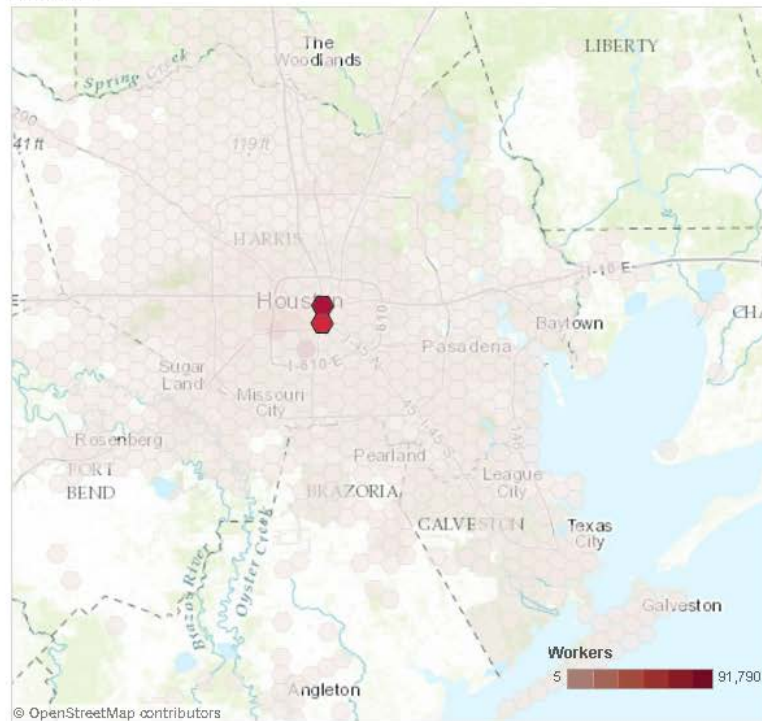


Sector Details (Where Most Workers Live)

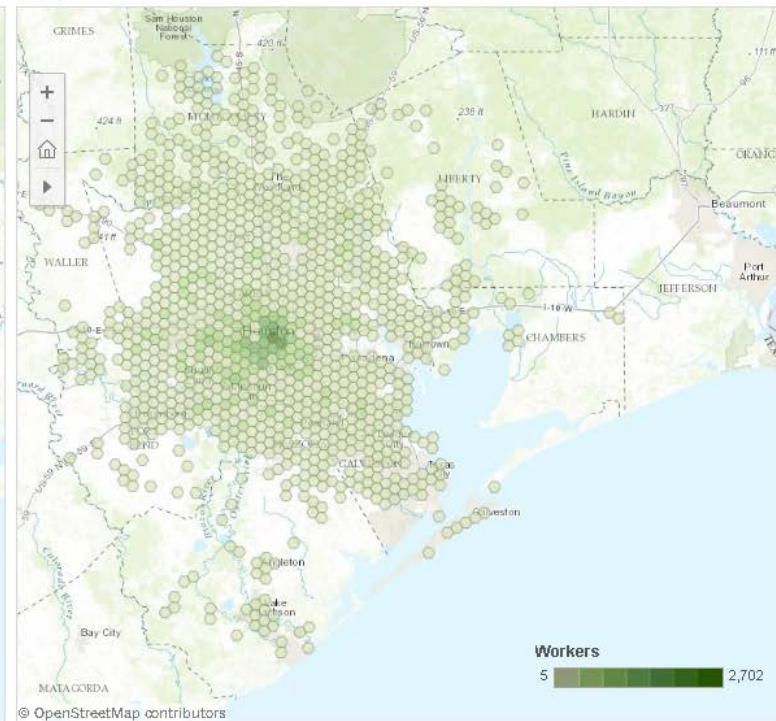


Example 5: Workforce Characteristics

Workplace



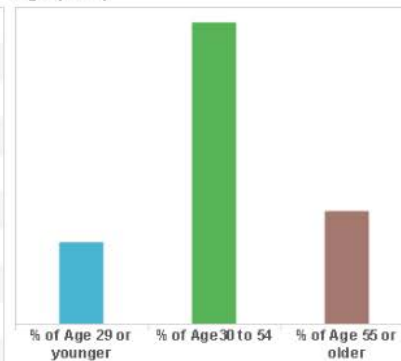
Home



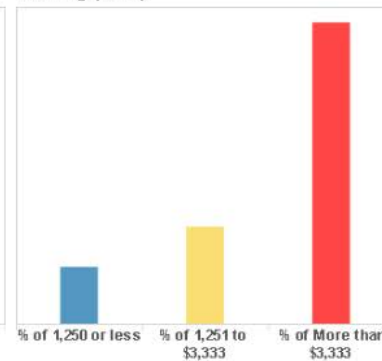
Summary (2014)

Total Workers	160,432
Age 29 or younger	26,313
Age 30 to 54	97,454
Age 55 or older	36,665
\$1,250 or less	19,970
\$1,251 to \$3,333	34,125
More than \$3,333	106,337
Goods Producing	22,098
TTU	20,522
Other Services	117,812

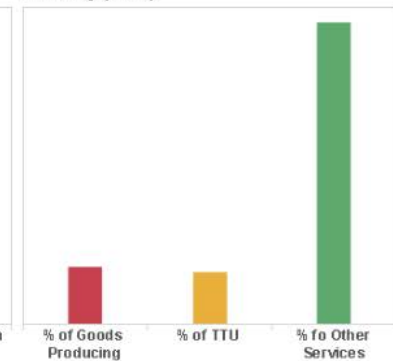
Age (2014)



Earning (2014)

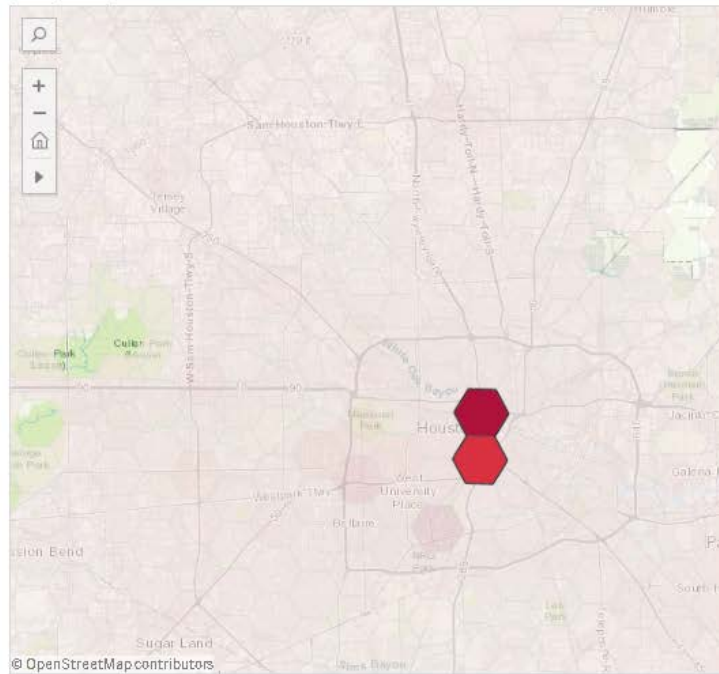


Industry (2014)



Example 6: Commute Patterns Trend

Workplace

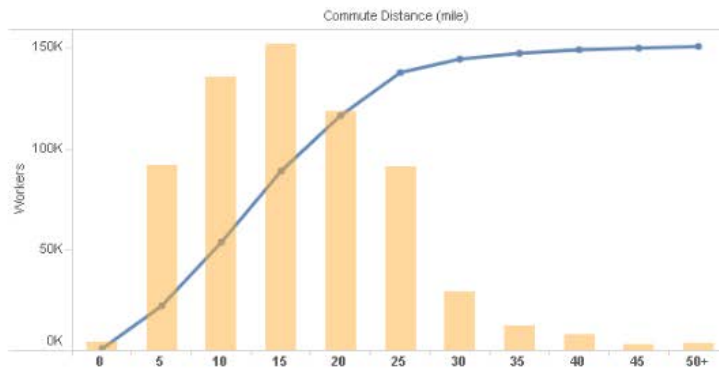


Year

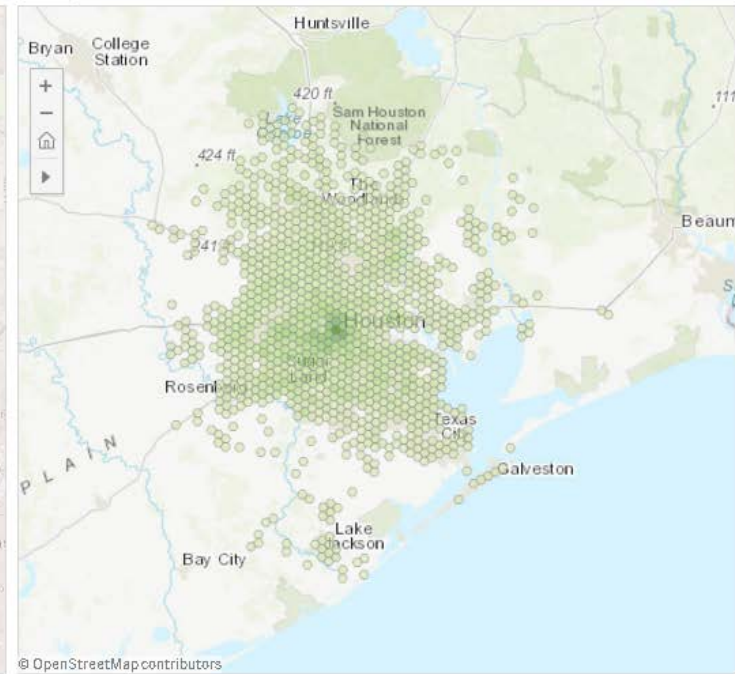
2002

Avg. Commute Distance (2002)

Total Workers	150,948
Total Commute Distance (mile)	2,140,678
Avg. Commute Distance (mile)	14.2



Home

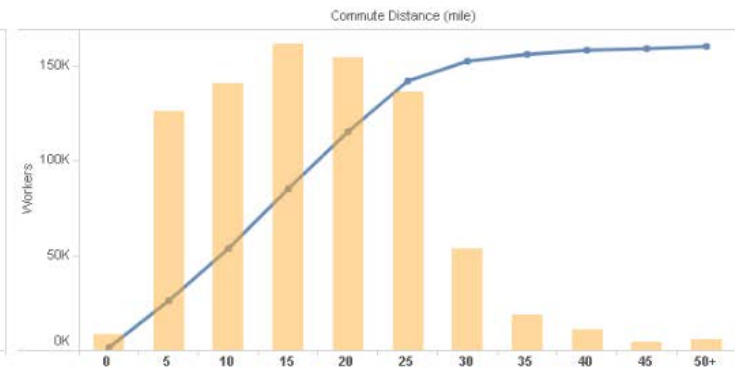


Year

2014

Avg. Commute Distance (2014)

Total Workers	160,432
Total Commute Distance (mile)	2,395,869
Avg. Commute Distance (mile)	14.9



www.h-gac.com/go/apps



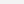
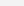
Application 2

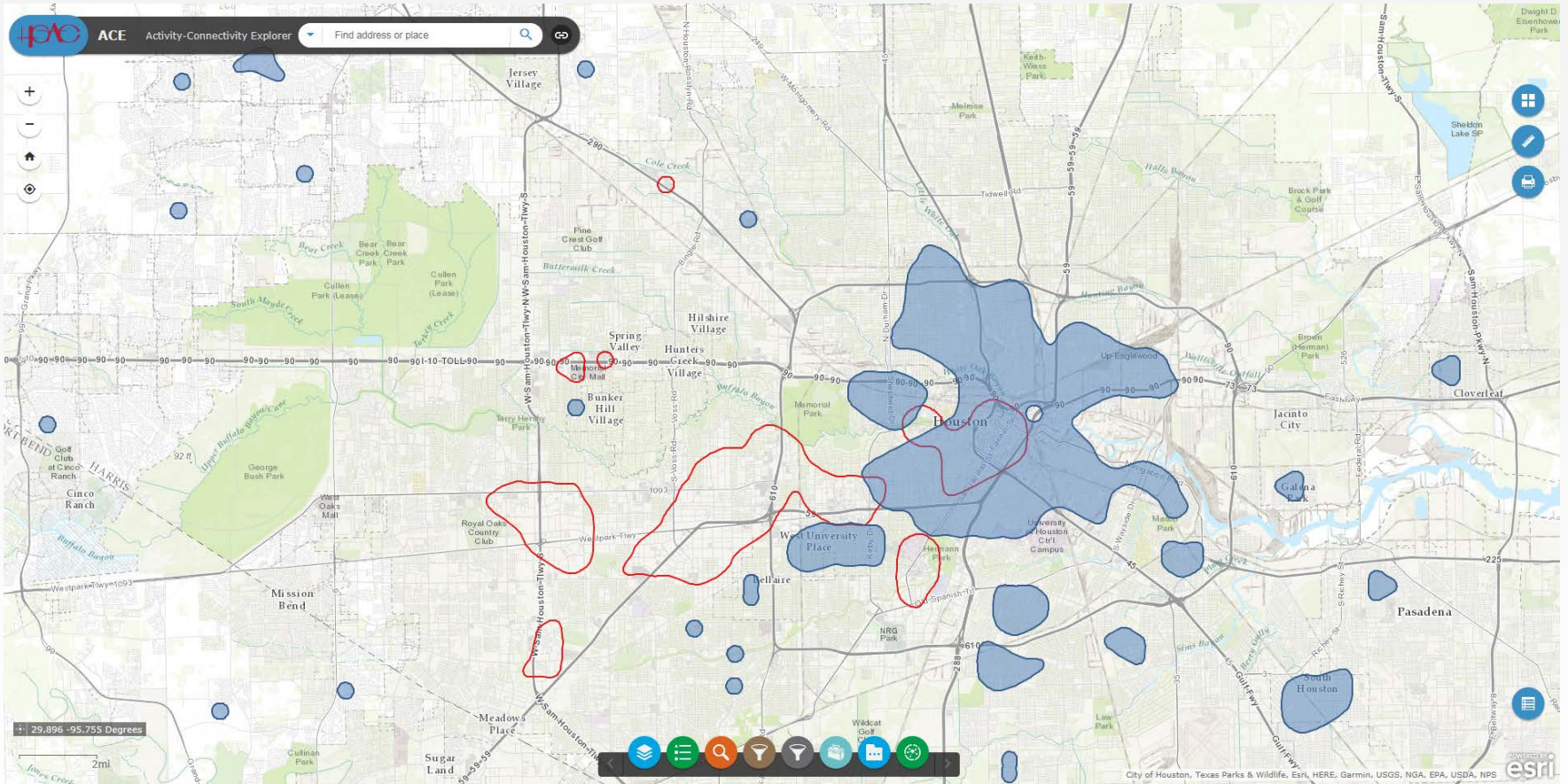
ACE Tool: Activity-Connectivity Explorer

Overview

- Identify existing activity center(s) based on density and connectivity index using hexagonal grid system.
- Measure neighborhood accessibility to population, jobs, and amenities
- **Density Indicators** : Household Population, Household, Employment, Activity Population (Population + Employment), Jobs/Housing balance
- **Connectivity Indicators**: Intersections
- **Accessibility Indicators**: Amenities (Ped-bike destinations), Activity Population, Intersections
- **Accessibility Score** = Activity Index (40%) + Connectivity Index (20%) + Amenity Index (40%)
- **Source**: US Census 2000 and 2010, US Census LEHD, Metropolitan Transit Authority of Harris County, County Appraisal Districts, and H-GAC.

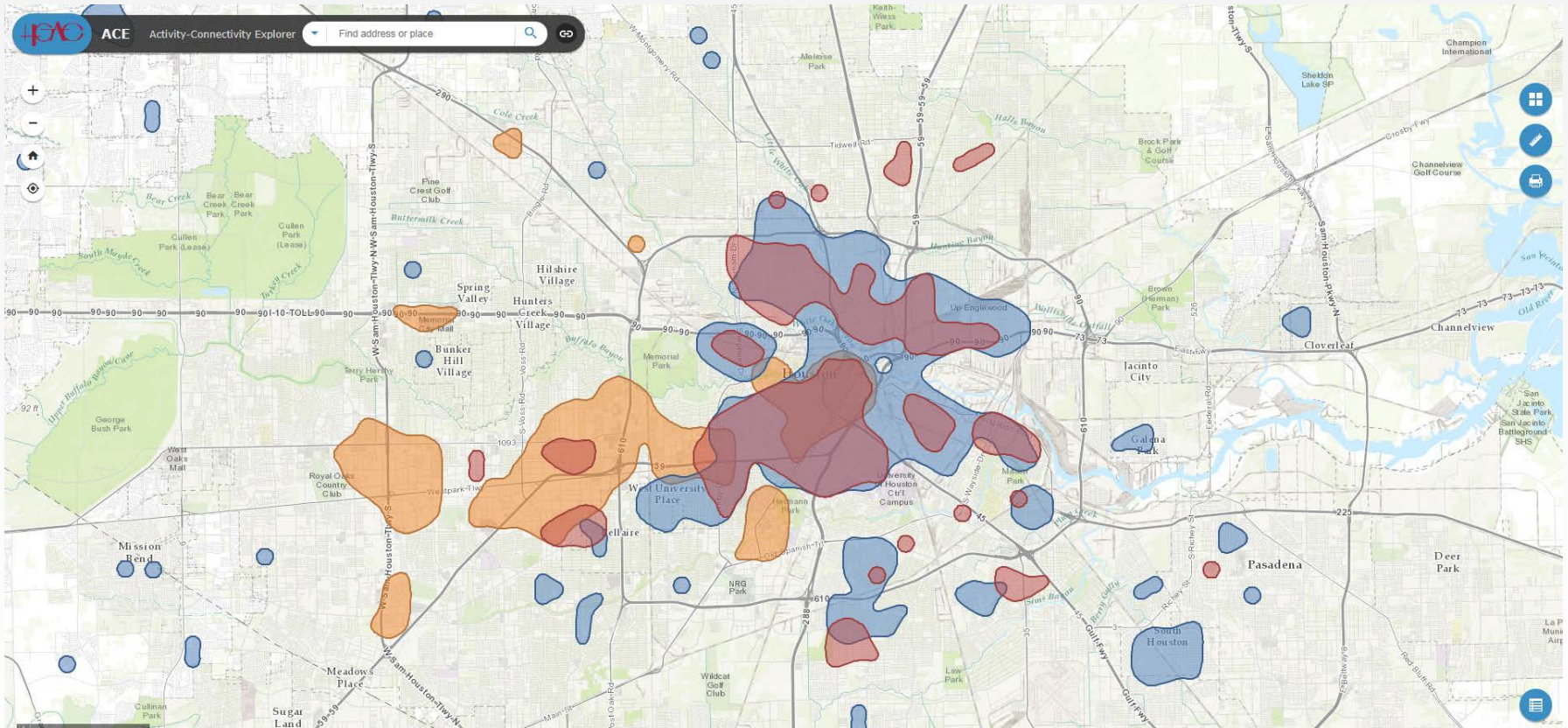
“Activity & Connectivity”

-  Top 10% Intersection Density
 Top 10% Activity Population



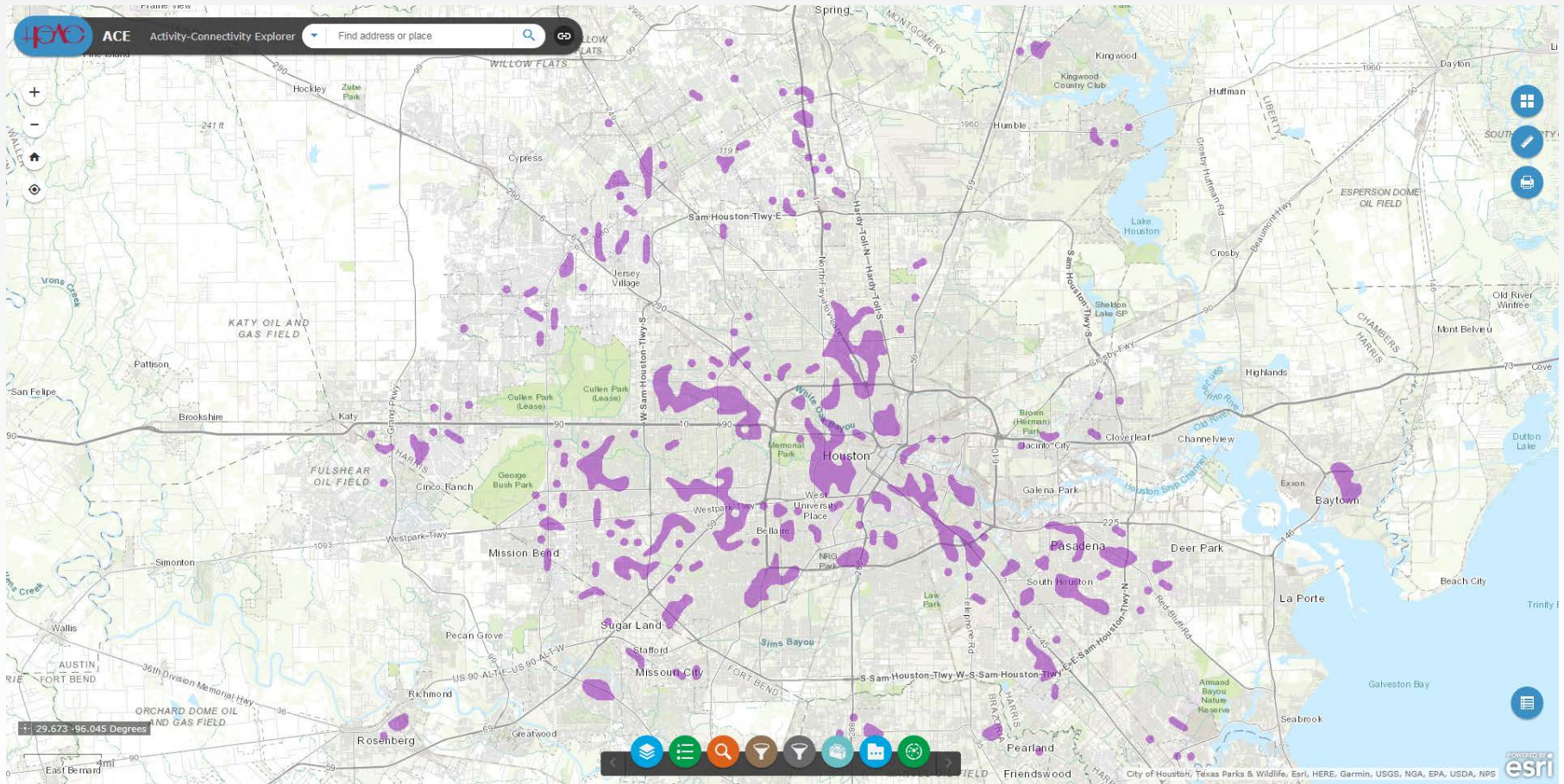
“Activity, Connectivity, & Amenities”

- Top 10% Connectivity
- Top 10% Amenity Concentration
- Top 10% Activity

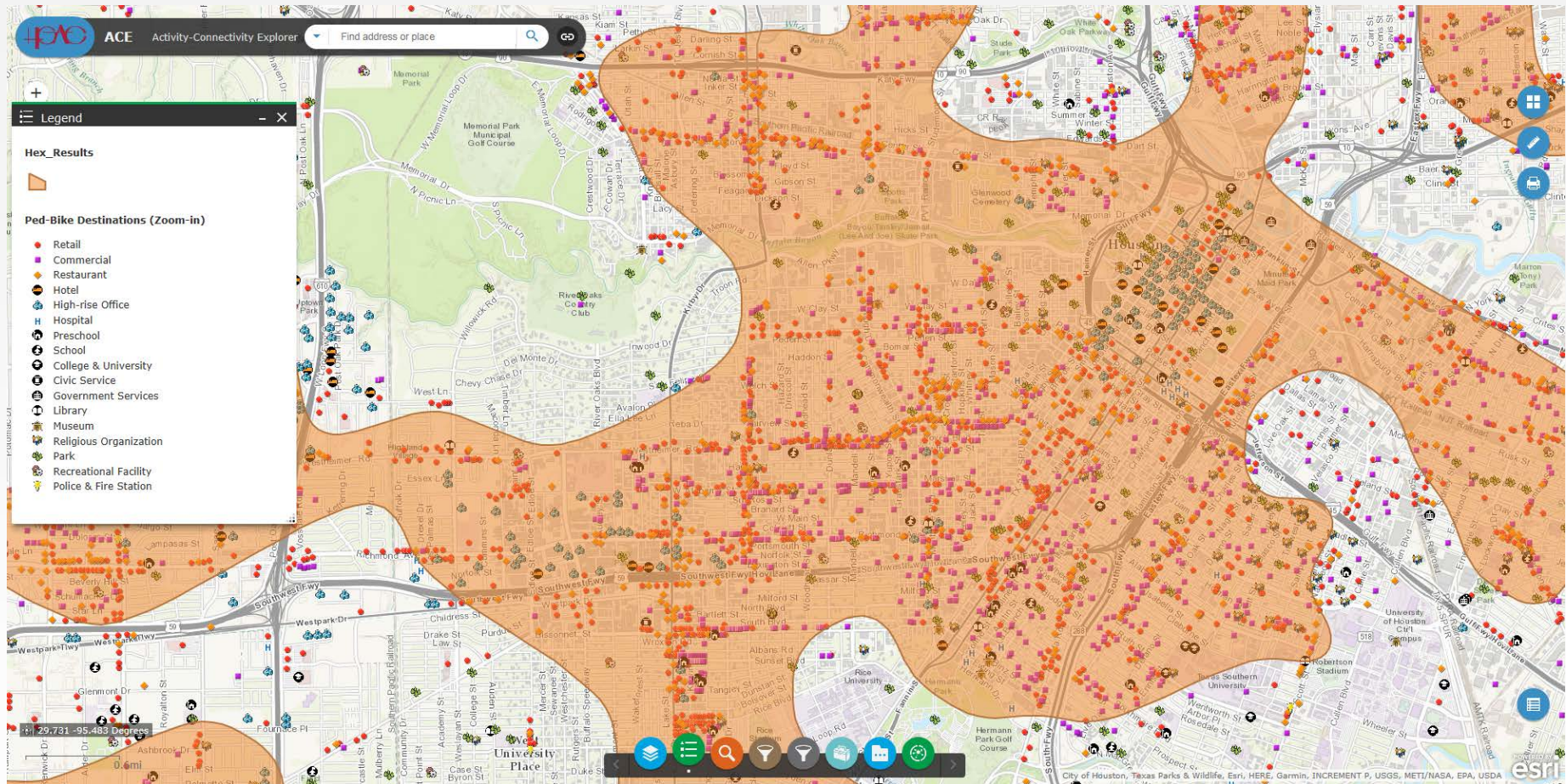


“Mixed Use Neighborhoods”

Jobs to Households ratio between 0.76 and 1.5



“In Top 10% of Accessibility Score”



Employment Density Comparison (2002-2016)

ACE (Activity-Connectivity Explorer) : Summary Viewer



ACE: 2016

Activity Pop. Density (2000-2016)

Employment Density (2000-2016)

Household Pop. Density (2000-2016)

Intersection Density (2000-2016)

Job/Household Ratio (2000-2016)



Filter the layer by specifying values.

Employment Density (2002)

Jobs / Square Mile

15,000 +

Source: 2002 LEHD, US Census

Apply

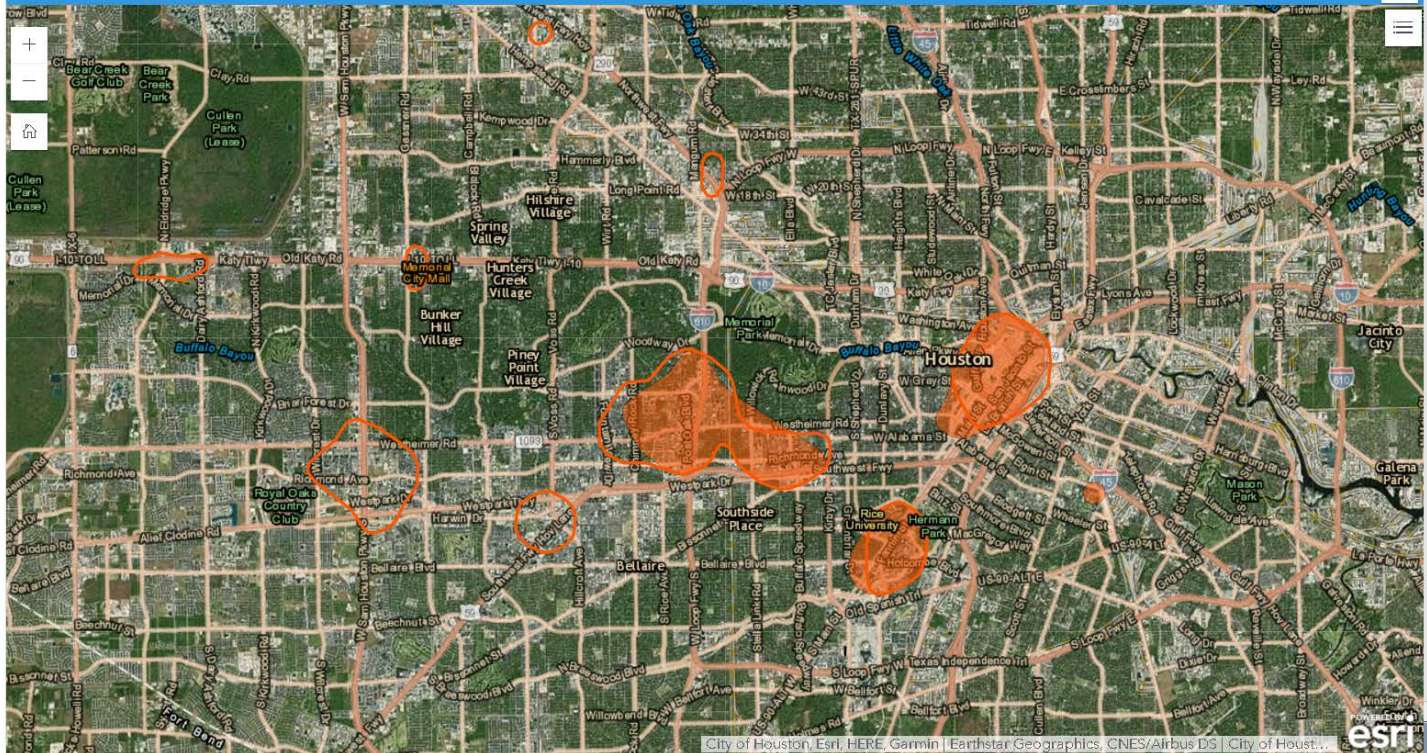
Employment Density (2016)

Jobs / Square Mile

15,000 +

Apply

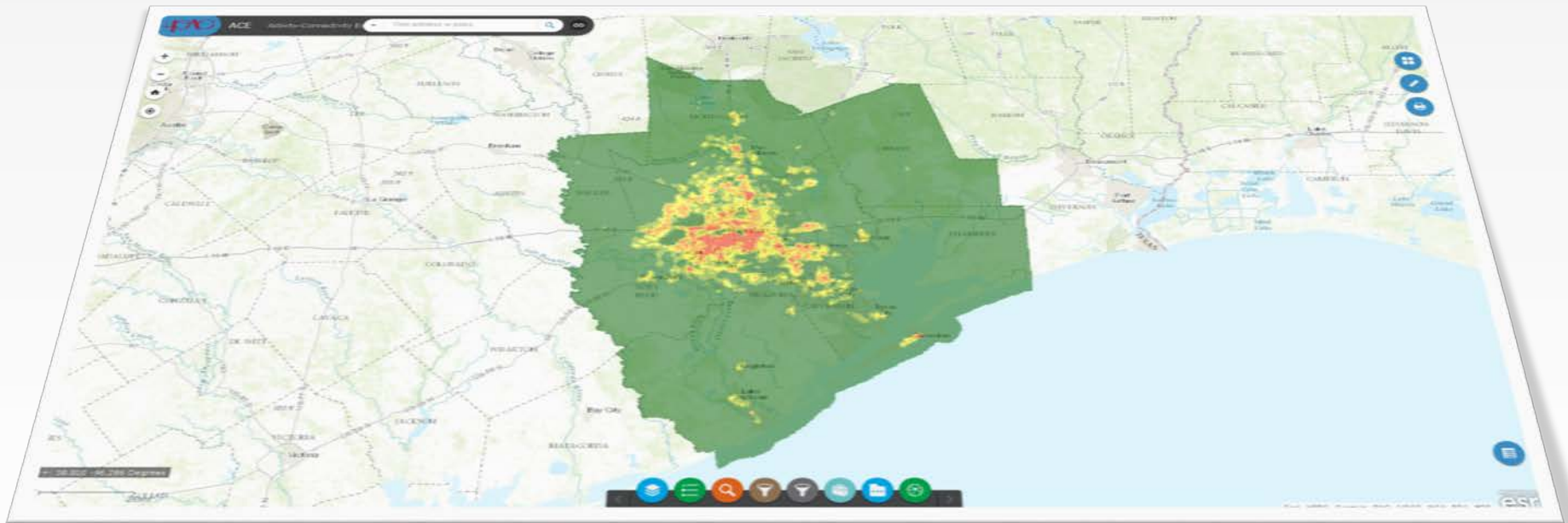
ACE: Employment Density Comparison



Houston-Galveston
Area Council

DEMO

www.h-gac.com/go/apps



Pramod Sambidi, PhD
Manager, Socioeconomic Modeling
Houston-Galveston Area Council
psambidi@h-gac.com

www.h-gac.com/go/apps