

LEHD Education Pilot Project

Rob Sienkiewicz and Andrew Foote

LED Partner Workshop

September 12, 2017

Motivation and Background

- Major missing link in the federal statistical infrastructure is between administrative education and earnings data
- Previous data products linking these data have had significant shortcomings:
 - College Scorecard only considers incoming cohorts, those receiving federal aid
 - State-level analyses can only match to in-state earnings

What LEHD Education Pilot is doing

- LEHD is partnering with university and state higher education systems to link graduate records to jobs data maintained by LEHD
- Developing two new pilot data products using this new administrative data, which will measure earnings and mobility outcomes of graduates

Current Partners

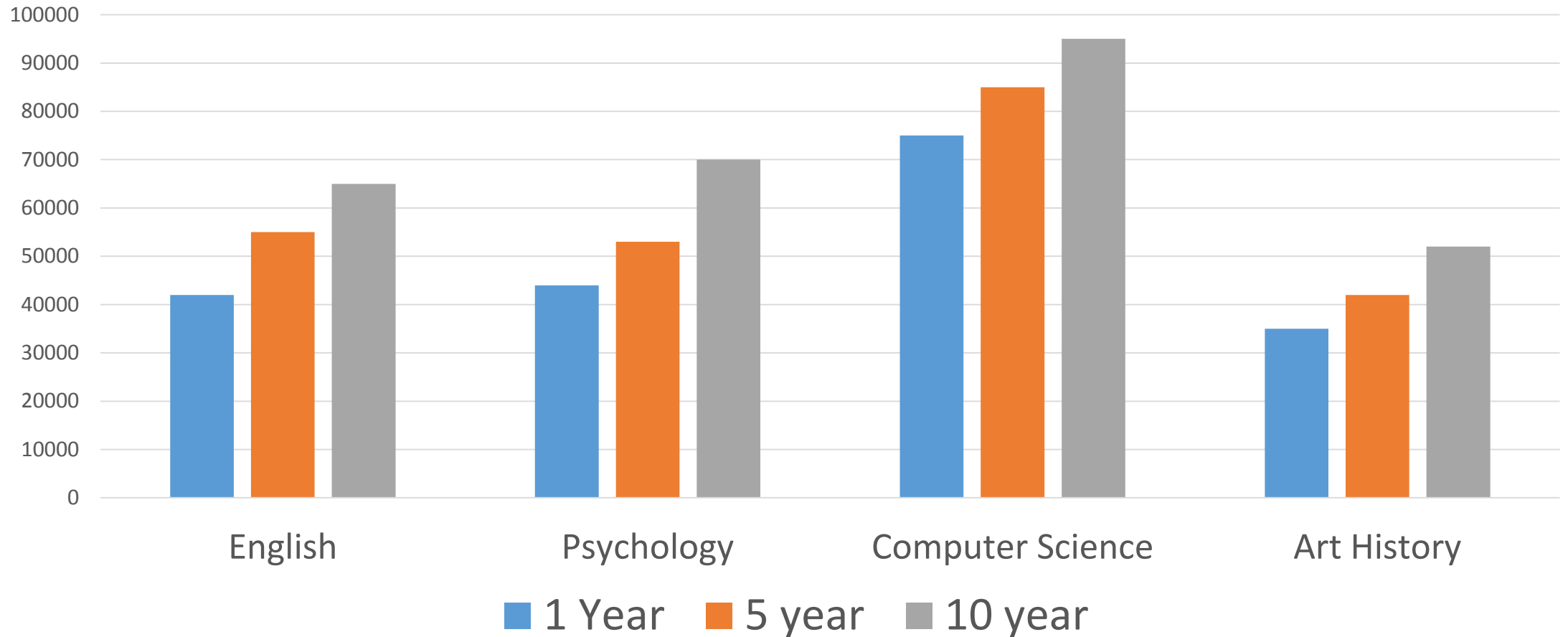
- University of Texas System
 - All UT schools, including graduate degrees
- Colorado Department of Higher Education
 - Data on all students at public post-secondary institutions
 - Includes graduates and certificate recipients from community colleges
- Ongoing discussions with a number of other potential partners

Planned outputs

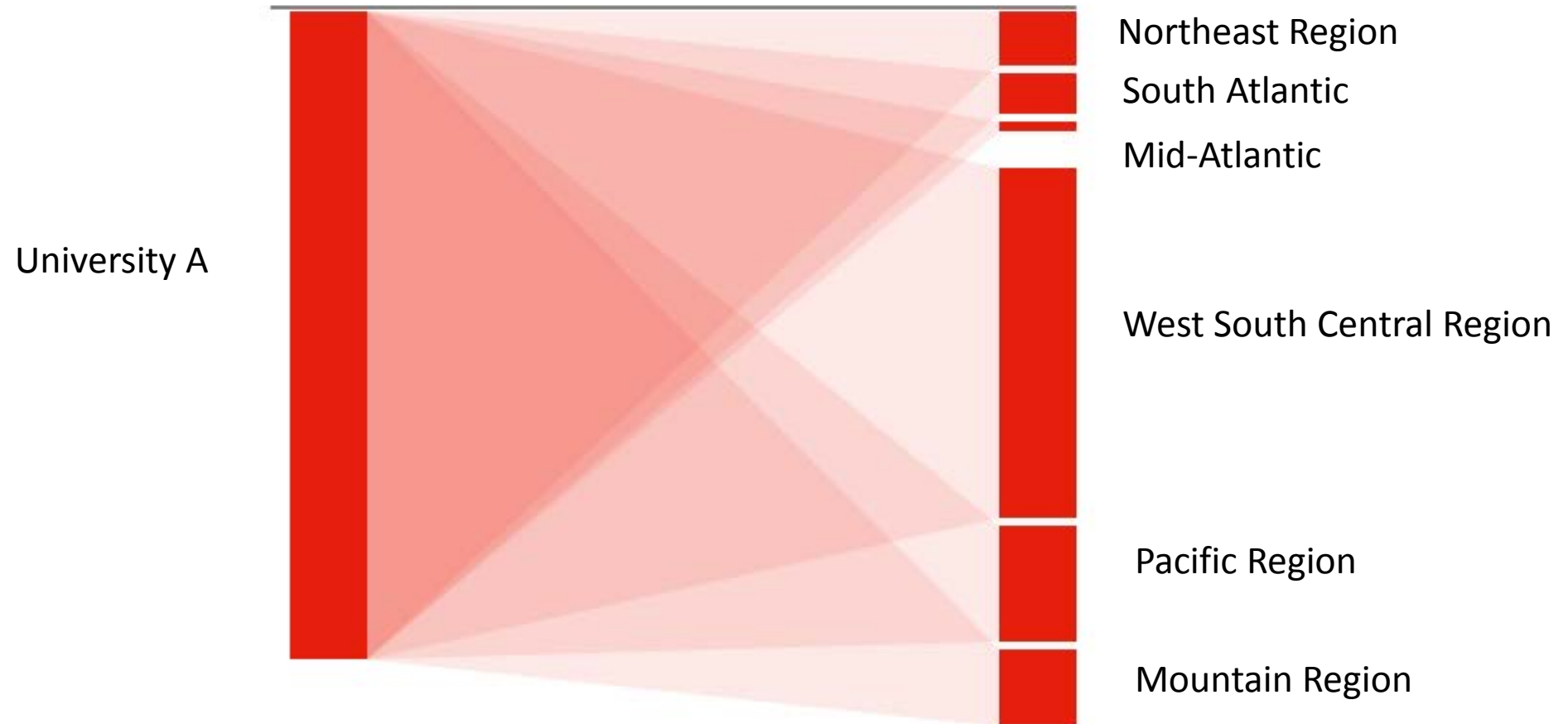
- Earnings of graduates 1, 5 and 10 years after graduation
 - By major field, institution, graduation cohort
 - 10th, 50th and 90th percentiles
- Flows of graduates from institution and major to region and industry of employment (similar to LEHD's Job-to-Job Flows data product)

Earnings Data Release Example

Median Earnings - University A Graduates



Pipeline flows example: Institution to Geographic Region



Timeline for release

- Earnings outcomes for graduates
 - Work mostly done, plan on releasing in Spring 2018 or soon thereafter
- Pipeline flows
 - Work to begin after earnings data released; likely Spring 2019 or later
- After initial release of pilot products, will look to expand number of partners

Questions?

- Email: andrew.foote@census.gov