

# LOCAL EMPLOYMENT DYNAMICS (LED) DATA: UPDATES & NEW EMPLOYMENT WORKFLOWS DATA

## 2016 LED Partnership Workshop

March 7, 2016

Erika McEntarfer

Matthew Graham

Lars Vilhuber

LEHD Program, Center for Economic Studies,  
U.S. Census Bureau

# Today we will talk about newly available data, applications and future developments

## Job-to-Job Flows

- About the data, upcoming releases
- Development of new tools to analyze data

## National QWI

- Data available now and future releases
- Updates to QWI Explorer

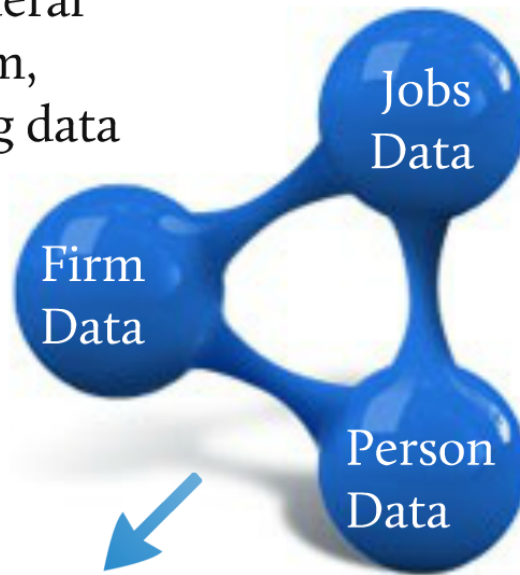
## New LODS/OnTheMap data available

## Looking forward to the future

# Job-to-Job Flows (J2J):

The third new public use statistical product derived from the Local Employment Dynamics (LED) state-federal partnership

An innovative federal statistical program, collecting existing data and ...



**The LEHD Program  
at Census**

..linking it together  
to provide new  
information sources  
at low cost

New linked national jobs  
data for the U.S.

FiveThirtyEight

May 21, 2014

## Want a Raise? Quit Your Job

Ben Casselman



Jonathan House of The Wall Street Journal has an [interesting story](#) in Friday's paper about how a shortage of skilled workers is driving up wages in a handful of industries (oil drilling, trucking, home construction), even as overall earnings growth remains weak.

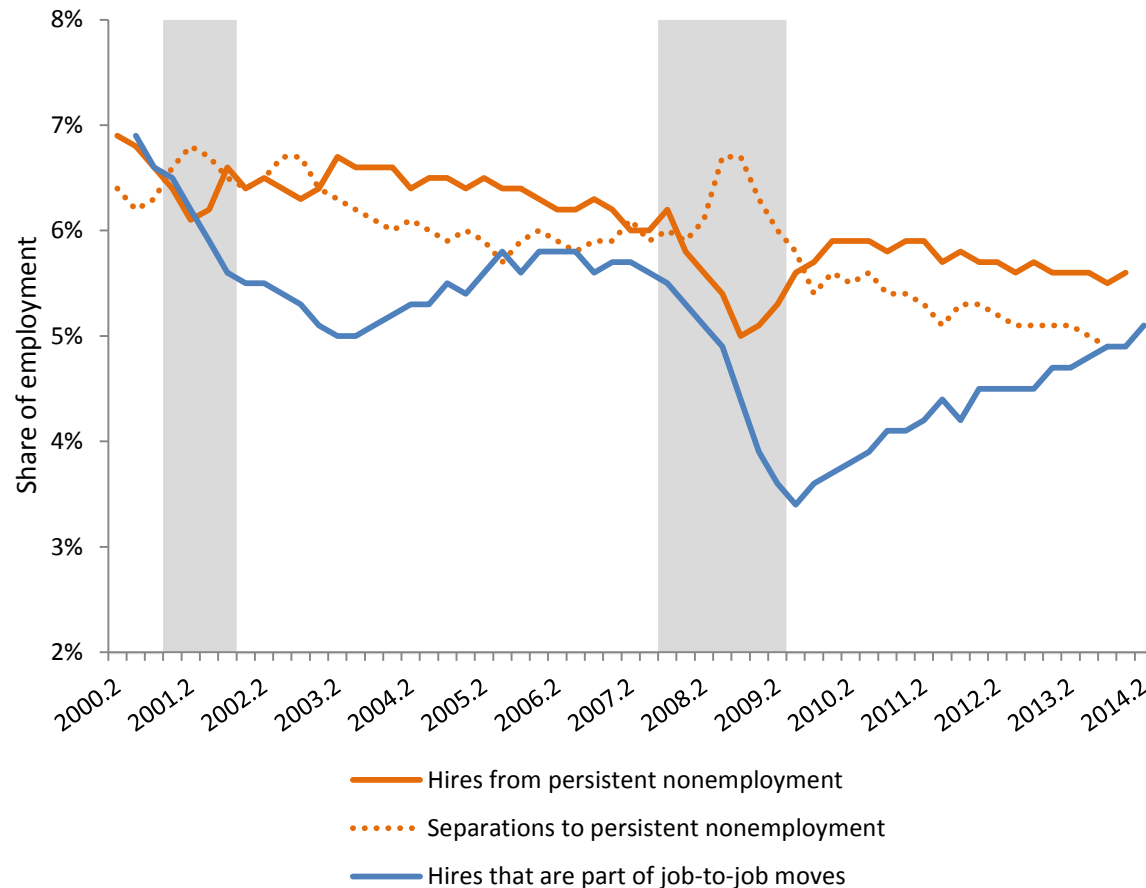
## Why care about job-to-job flows?

1. In 2000, about  $\frac{1}{2}$  of all hires were workers moving from one job to another.

2. Most job moves are moves 'up the job ladder'

- Almost 1/2 of wage growth for young workers is from job change (Topel & Ward, 1992).
- This job ladder is *strongly* procyclical

## Job-to-Job Flows: National-level statistics on rates of job change



70% of the fall in hiring in 2008 was decline in job-to-job moves

Most of this decline comes from workers remaining longer at the lowest paying firms in recessions

Note: Source: Job-to-Job Flows, national data. 2015Q2 release Shaded regions indicate NBER recession quarters. All data are seasonally adjusted.

October 19, 2015, 9:40 AM ET

## Here's Where All the Construction Workers Went

By Jeffrey Sparshott



Crews construct a Ryland Group home near Dallas.

KRIS HUDSON/THE WALL STREET JOURNAL

The Wall Street Journal has chronicled builders' complaints about a [shortage of construction workers](#) when employment levels are still well below those of the boom years.

Indeed, industry-wide employment cratered from 2006 to 2011, losing nearly 2.3 million jobs. [Where did they all go?](#)

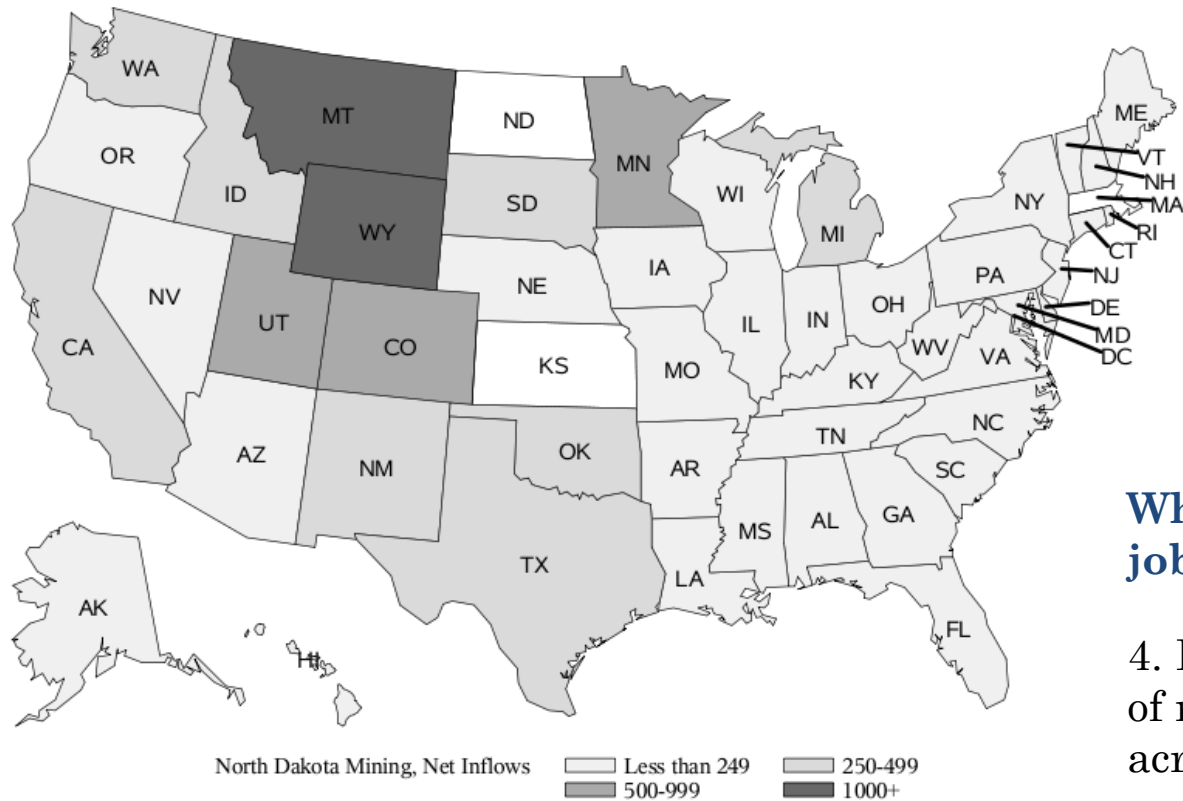
Well, the Census Bureau's job-to-job flows program tracks workers as they move in and out of the labor market, but underlying microdata isn't public, so agency economists Hubert Janicki and Erika McElroy have [interesting findings](#).

### Why care about job-to-job flows?

3. Better understanding of reallocation of workers across different industries

- 2.3 million construction jobs disappeared between 2006 and 2011. Where did these workers go?
- Can use Job-to-Job Flows data where construction separators are going.
- 60% of workers left the labor market or moved to different industries after the housing boom

## Net migration of out-of-state workers into the North Dakota mining sector: 2010-2014



Source: U.S. Bureau of Census, Job-to-Job Flows

Source: J2J origin-destination data. J2J data is not yet available for Massachusetts and Kansas, data for all other states is present. Net migration of out-of-state workers is hires into the North Dakota mining sector of workers who recently held a job in a different state, minus flows of North Dakota mining workers to jobs in that state.

**Why care about job-to-job flows?**

4. Better understanding of reallocation of workers across different geographies

# Job-to-Job Flows: Data Releases in 2015-16

- *Released in FY2015:*
  - National J2J counts and rates (NSA, SA)
  - State J2J counts and rates (NSA, SA)
    - By industry, demographics, firm age/size
  - Origin-destination J2J counts (NSA)
    - State-to-state worker flows, industry-to-industry
- *Forthcoming in FY2016:*
  - Yet to be released data for New England and KS.
  - CBSA-level origin-destination J2J data
  - Industry by demographics origin-destination data
  - 3-digit NAICS origin-destination data
  - Earnings associated with origin and destination jobs in O/D files

# Challenges for Job-to-Job Flows

- First LED statistical product which exploits ability to track workers across state lines....
  - But voluntary nature of partnership means increased risk to all from states exiting partnership
  - e.g. WY is no longer participating, so some CBSAs in CO and ND will be suppressed
- Noise in unemployment insurance jobs data
  - Firm non-reporting in UI causing noise in employment flows series
  - Working on more aggressive detection and imputation of nonreporting units in upcoming releases

## Possible future enhancements to J2J

‘Blue sky’ thoughts on new possible statistics from J2J:

- Employment and earnings outcomes for displaced workers separating to longer nonemployment spells
- Modeled estimates to make data more timely
  - Currently there’s a 9-month lag, but job-to-job flows mirror JOLTS trends quite well.
- Future links to education data to better understand labor supply pipelines and worker reskilling after layoffs

# Dissemination of Job-to-Job Data

## Current

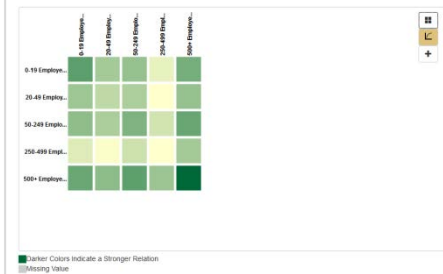
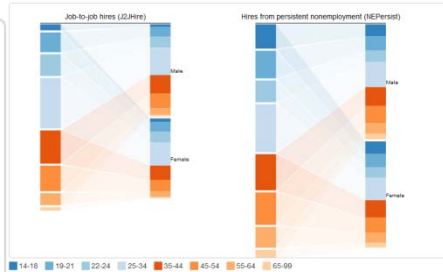
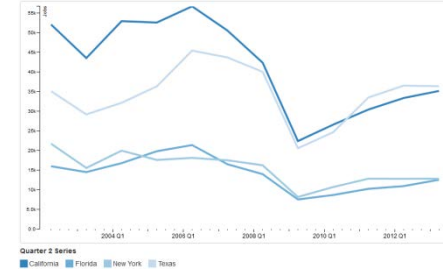
- CSV and Excel files for download

Version:	R2015Q2 ▾	State/Territory:	United States ▾	Type:	j2j ▾	Format:	XLS ▾
<a href="#">View Files</a>							

## Upcoming

- Application currently under development
- Beta version scheduled for a summer release
- Accommodate staged data releases
- Disseminate *and* Educate

# Job-to-Job Explorer



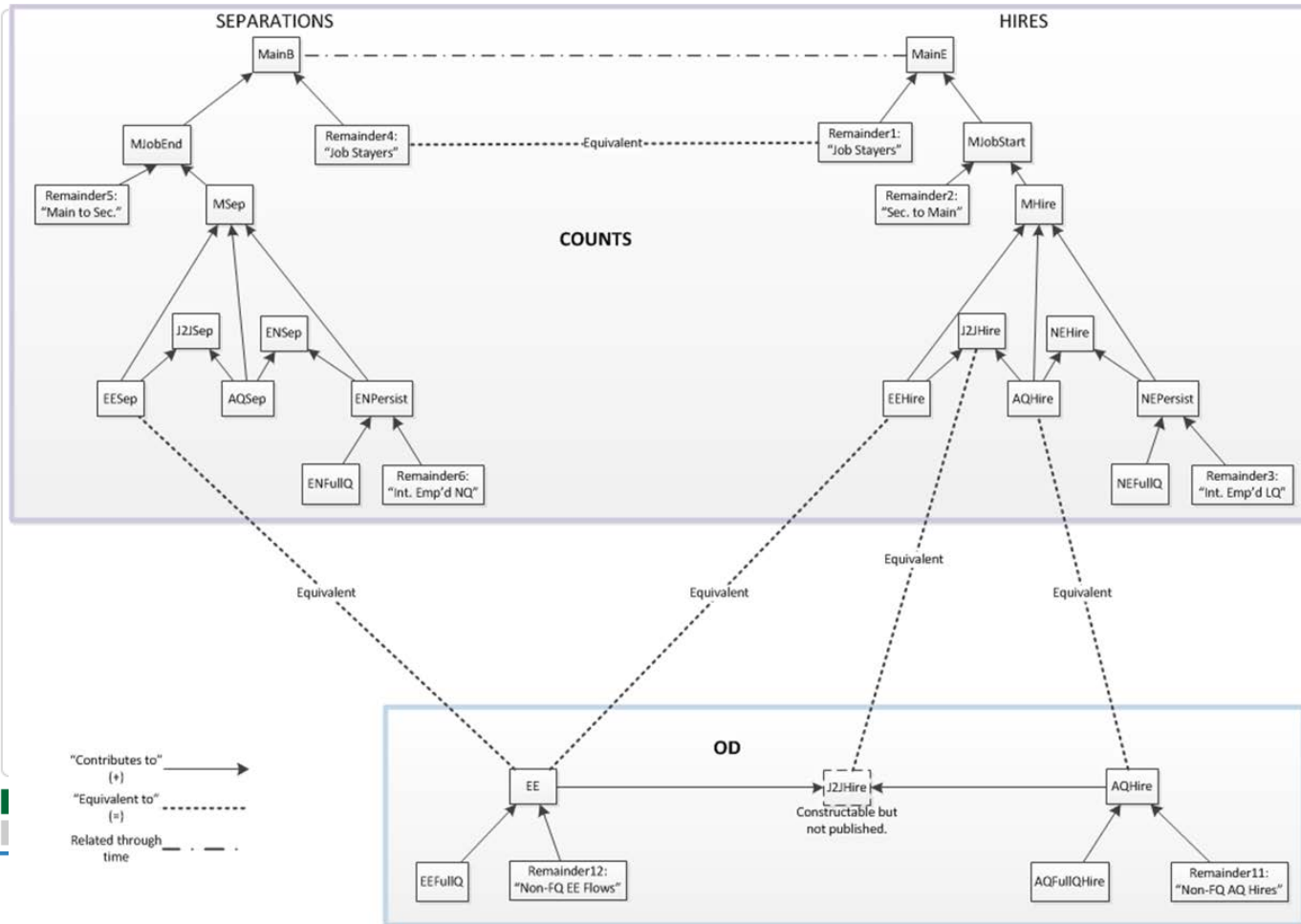
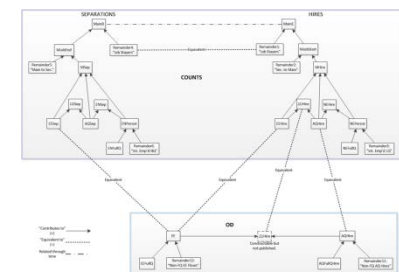
What is your focus?



Not sure? Check out these examples from past J2J webinars:

- Which states did newly hired North Dakota mining workers come from? (Map)
- Which non-mining industries in North Dakota did newly hired North Dakota mining workers come from? (Bar chart)
- Which states did newly separated Louisiana education workers go to for new non-education jobs? (Map)
- Which states did newly separated Louisiana education workers go to for new non-education jobs? (Map)
- Which industries in Louisiana did newly separated Louisiana education workers go to? (Bar chart)
- How do job-to-job flows compare with flows to unemployment? (Line chart)

Take me to the app!

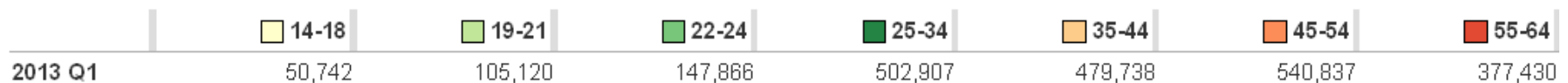


# National QWI

Unlocking the Powerful Labor-Force Information  
of the Quarterly Workforce Indicators

# Why are QWIs Important?

- Indicators on Employment, Employment Change (Firm and Individual), and Earnings
- Detailed Firm Characteristics (geography, industry, age, size)
- Detailed Worker Demographics (sex, age, education, race, ethnicity)
- 3 Quarter lag, coverage varies by state
- Used by economic developers, urban planners, policy analysts, workforce researchers, and academics



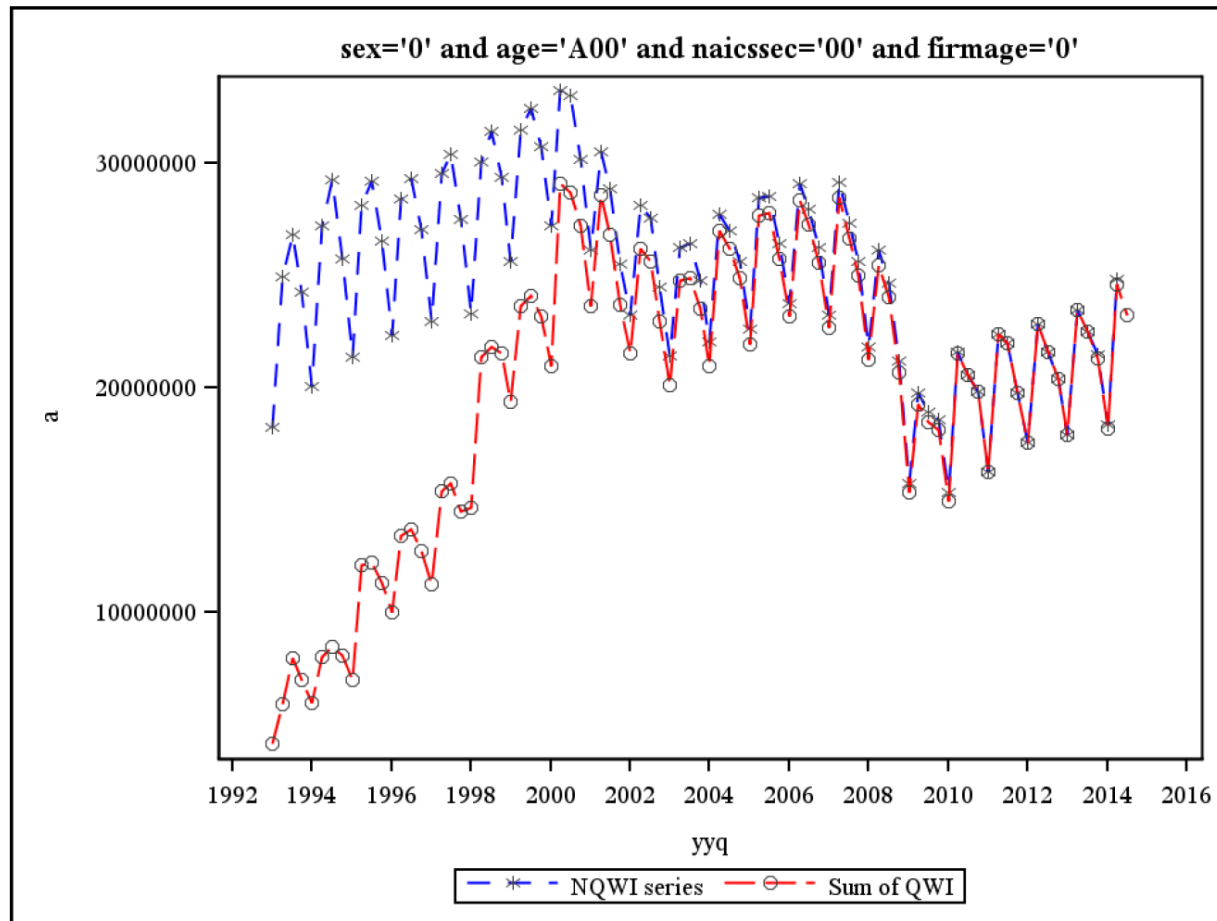
# National QWI

- National QWI are derived from existing public-use state-level QWI
- Using multiple imputation models that account for missing data, the methodology generates a consistent estimate of the national series, including measures of its uncertainty.
- Provided in *levels* and *rates*

# National QWI

- Methodology robust to
  - Historical absence of data
  - Temporary absence of most current data
- Preferable to simply adding up available state-level data

# Sum of QWI vs. National QWI



# Beta Releases in 2015

- Private sector only
- Since R2015Q1: NAICS Sectors
  - Sex by age
  - Sex by education
- New in R2015Q3:
  - Firm-age
  - Firm-size

# Forthcoming Beta Releases

- Update to R2015Q4 (imminent)
- All ownership
- NAICS subsectors (NAICS3)
- Race by ethnicity tabulations

# Other enhancements

- Seasonal adjustment
  - Question: which of the **584,988,768** (+ national) series should be adjusted?
  - Manual revision not feasible
  - Starting with National QWI
  - Developing robust common policy on release of large groups of seasonally adjusted data

# Other enhancements

- Towards a machine-readable schema
  - CSV-based
  - Provides same information as the previous document
  - Machine-readable in Excel, SAS, R

**[lehd.ces.census.gov/data/schema/latest/](https://lehd.ces.census.gov/data/schema/latest/)**

# Updates on QWI Dissemination

# LEHD's Data Dissemination Strategy

Provide a wide variety of access points to the data to accommodate as many user needs as possible:

- Web tool users: Create your own table, chart, and map using the flexible user-interface of [QWI Explorer](#)
- Intermediate data users: Extract the exact indicators and characteristics needed using the [LED Extraction Tool](#)

# LEHD's Data Dissemination Strategy

For advanced users:

- Access single raw QWIPU files from <http://lehd.ces.census.gov/data/#qwi>
- Bulk download of raw QWIPU from <http://lehd.ces.census.gov/pub/>
- Integration into the Census API (Beta release): <http://beta.dataweb.rm.census.gov/data/timeseries/qwi.html>

# What's New

# What's New in the LED Extraction Tool

- National QWI
  - All Private Jobs Only
  - NAICS 3, Race/Ethnicity coming soon
- Cross-State Queries
  - All State totals in one table

LED Extraction Tool - Quarterly Workforce Indicators (QWI)

1. Geography 2. Firm Characteristics 3. Worker Characteristics 4. Indicators 5. Quarters 6. Summary and Export

Geography Level

Search:

United States

Alabama

Alaska

Arizona

Arkansas

California

Colorado

Connecticut

Delaware

District of Columbia

Florida

United States States: 52

Geography Type

States

Areas

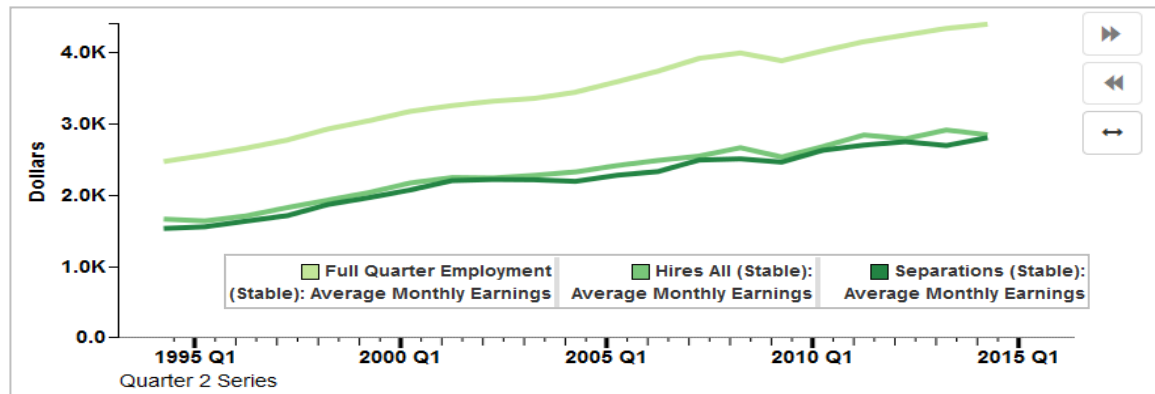
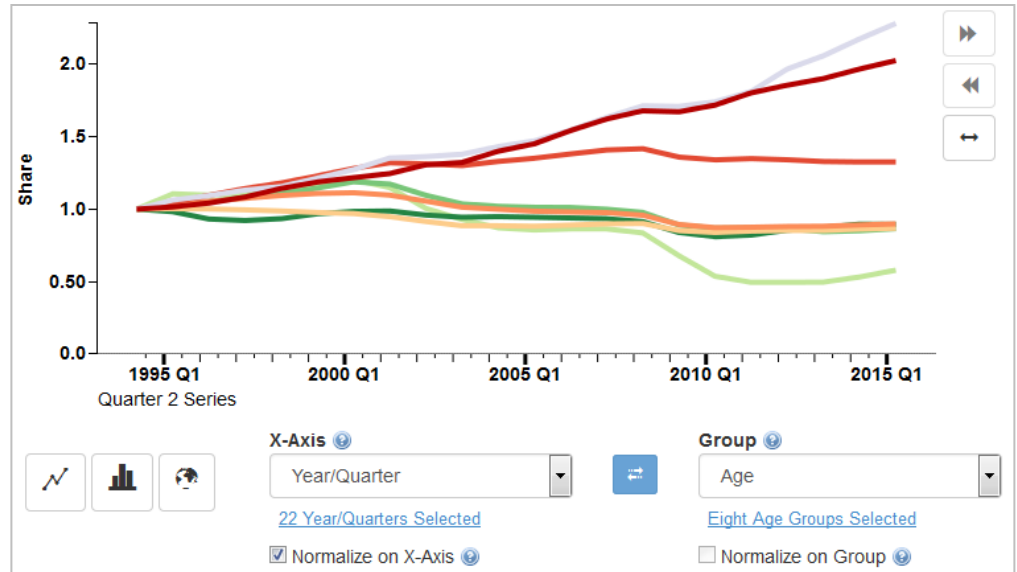
Search:

[Check All](#) | [Check None](#) | [Invert Selection](#)

- ☒ 00 National (50 States + DC)
- ☒ 01 Alabama
- ☒ 02 Alaska
- ☒ 04 Arizona
- ☒ 05 Arkansas
- ☒ 06 California
- ☒ 08 Colorado
- ☒ 09 Connecticut
- ☒ 10 Delaware
- ☒ 11 District of Columbia
- ☒ 12 Florida
- ☒ 13 Georgia
- ☒ 15 Hawaii
- ☒ 16 Idaho

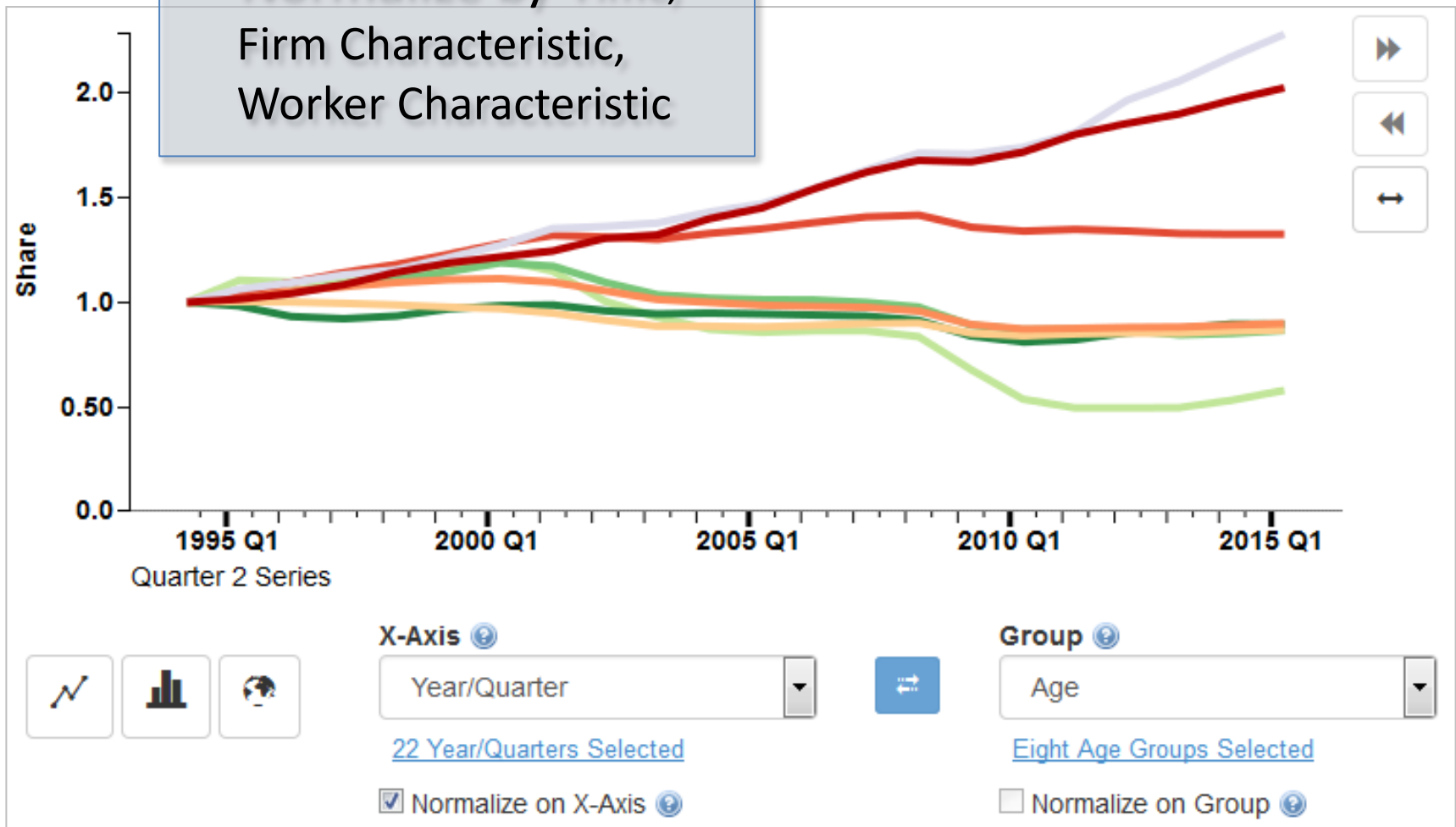
# What's New in QWI Explorer

- Improved Bar Charts
- Data Normalization
- Group by Indicator



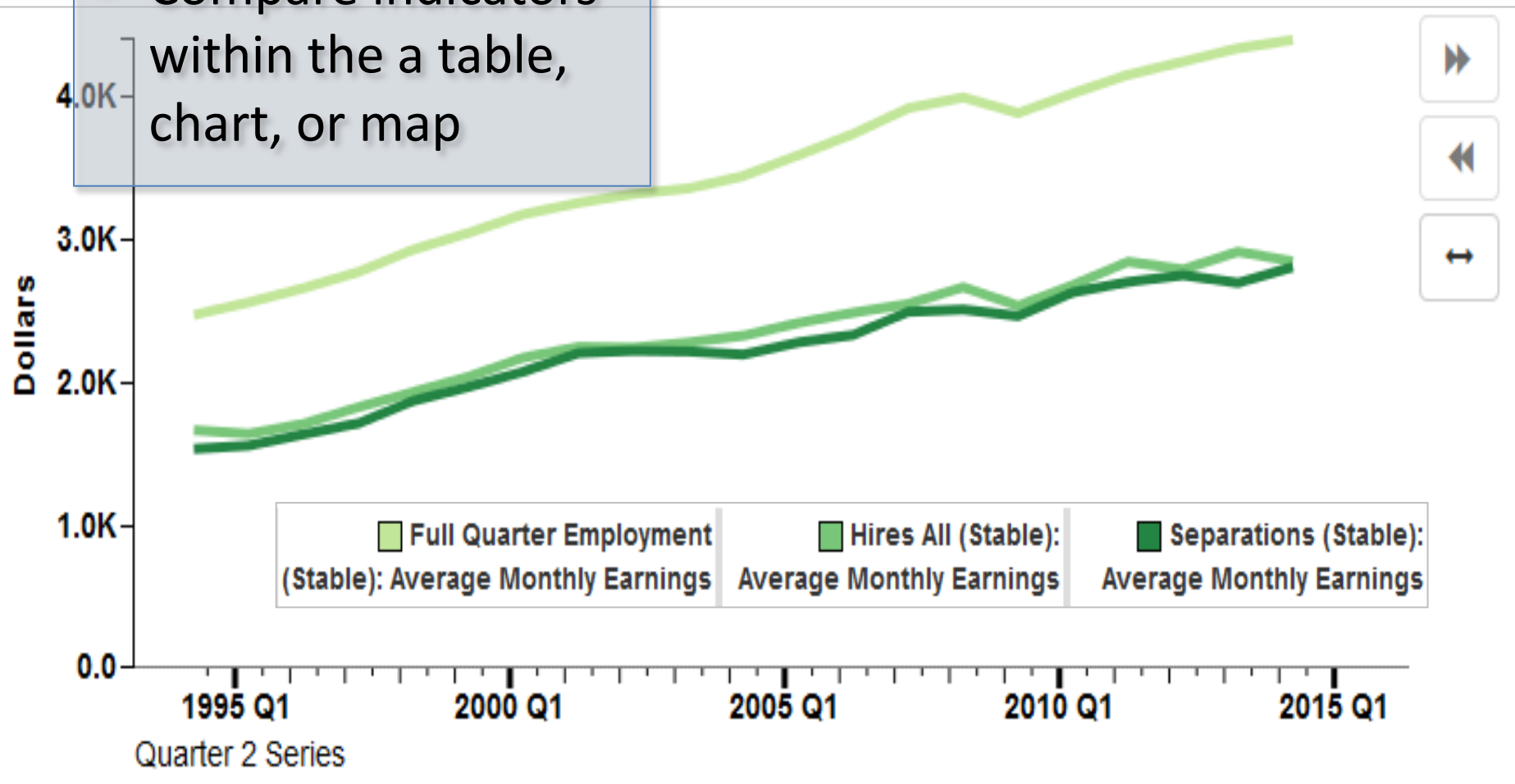
# QWI Explorer: Data Normalization

- Normalize by Time, Firm Characteristic, Worker Characteristic



# What's New in QWI Explorer

- Compare indicators within the a table, chart, or map



# Beta Release of QWI data in Census API

- The Census API allows developers to design web/mobile apps that provide users with quick and easy access to an increasing pool of publicly available datasets – now included the Quarterly Workforce Indicators (QWI).
- Still some bugs to resolve (wildcarding not working), full release in 2-3 months
- For more information on the Census API:  
<http://www.census.gov/developers/>

# Beta Release of QWI data in Census API

- Examples

- State by Race/Ethnicity:

<http://beta.dataweb.rm.census.gov/data/timeseries/qwi/rh?get=race,Emp,year,quarter&for=state:01&time=2015-Q1>

- County by Sex/Age:

<http://beta.dataweb.rm.census.gov/data/timeseries/qwi/sa?get=Emp,year,agegrp,quarter&for=county:195&in=state:02&time=2015-Q1>

- Metro/Micro Area by Sex/Education:

<http://beta.dataweb.rm.census.gov/data/timeseries/qwi/sa?get=Emp,year,agegrp,quarter&for=metropolitan+statistical+area/micropolitan+statistical+area:19060&in=state:24&time=2015-Q1>

# Outlook

# Coming Soon

- National QWI and cross-state queries in QWI Explorer
- Local Storage in QWI Explorer
  - Customize your preferences – choose to remove conflict popups, set default settings, etc.
- Sub-state queries across states in the LED Extraction Tool

# LODES & OnTheMap

New LODES data and OnTheMap updates

- 2012 & 2013 data released last summer
- **2014 data released last week**

Updated OnTheMap for Emergency Management

- 2013 LODES and 2009-2013 ACS 5-year estimates
- 2014 LODES and 2010-2014 ACS coming later this Spring

# Looking forward (near term)

Recent years saw aggressive push in development and release of new LED data and tools:

- **2010-2013:** worker education, race & ethnicity, firm age and size, federal workers added to QWI and LODES, maturation of OnTheMap
- **2014-2016:** development and release of QWI Explorer, Job-to-Job Flows, National QWI

Near term next goal: shore up data quality

- Wage record impute to improve flow statistics
- Improvements to geography quality
- Improvements to establishment to worker imputes

# Looking forward (further out)

We are also beginning research and development on the next generation of LED data products

Some ideas we are currently exploring:

- Linked education-employment products
- Entrepreneurship statistics
- Inequality and economic mobility statistics
- Displaced worker outcomes
- Job quality measures ('good jobs')