

# National Quarterly Workforce Indicators

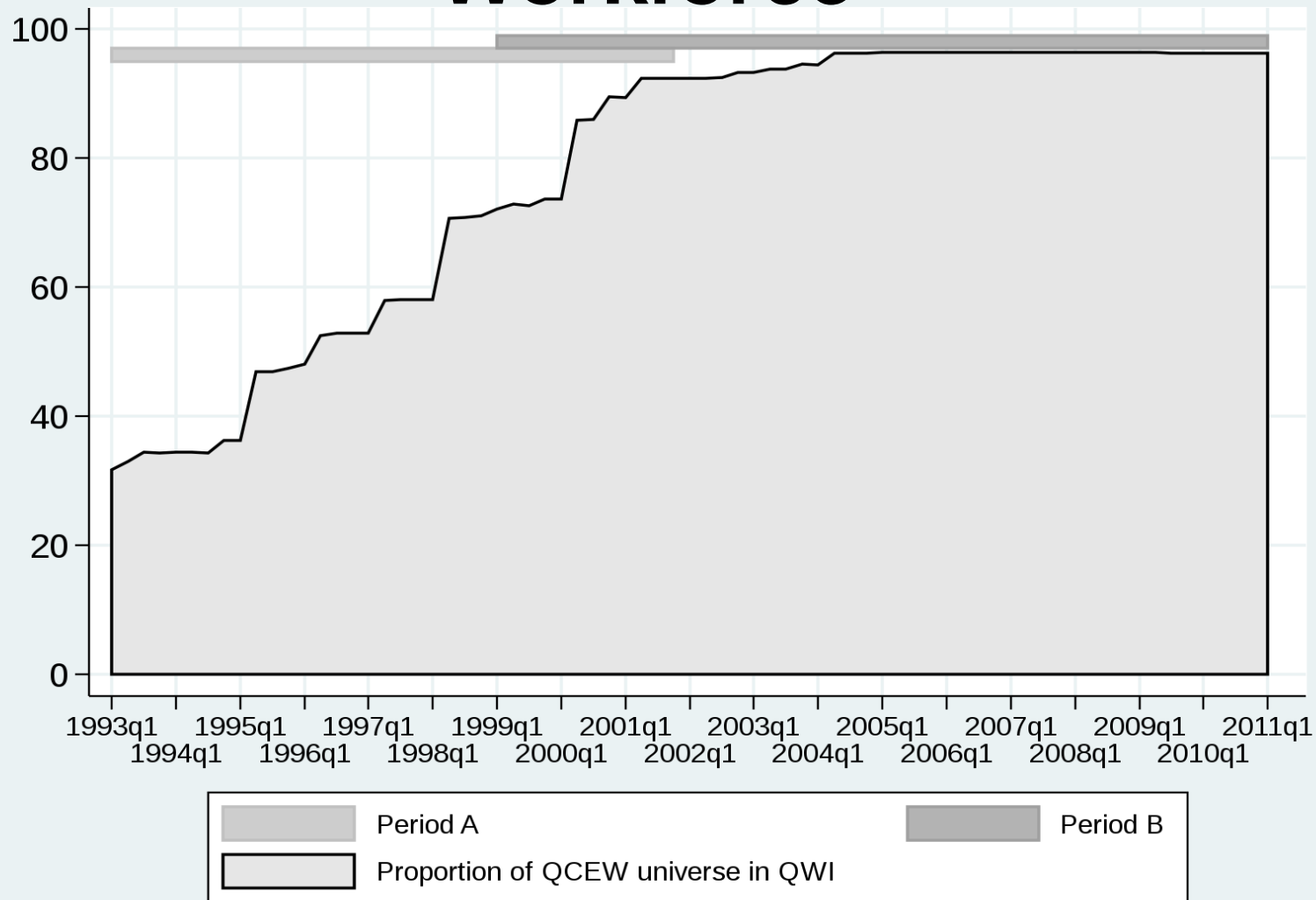
June 22, 2015

# Motivation

- QWI a unique source integrating many of the different measures that are of interest in labor market analysis, from the same source data
- Example: Gross work and job flows are difficult to measure on a consistent basis without fully integrated micro-data at the job (employer-employee link) level
- Gross flows are very heterogeneous even within very detailed industry, geography, establishment size, ... or demographic group

# The Problem

# QWI Coverage of the Private Workforce



# National QWI

- Initially developed at Cornell University
- ([Abowd and Vilhuber, 2011](#): *Journal of Econometrics*, Elsevier, vol. 161(1), pages 82-99, March; also [CES WP-10-11](#))
  - Based on public-use data only
  - Aggregation algorithm published
- Integration into LEHD led by Lars Vilhuber and Camille Norwood

# Availability

# Official LEHD version

- Conforming to QWI V4.x data schema
  - All current QWI variables, identical names
  - Conforming file naming conventions
  - Soon: Accessible through QWI Explorer, LED Extraction tool
- Currently available on LEHD data page

<http://go.usa.gov/3EDUG>

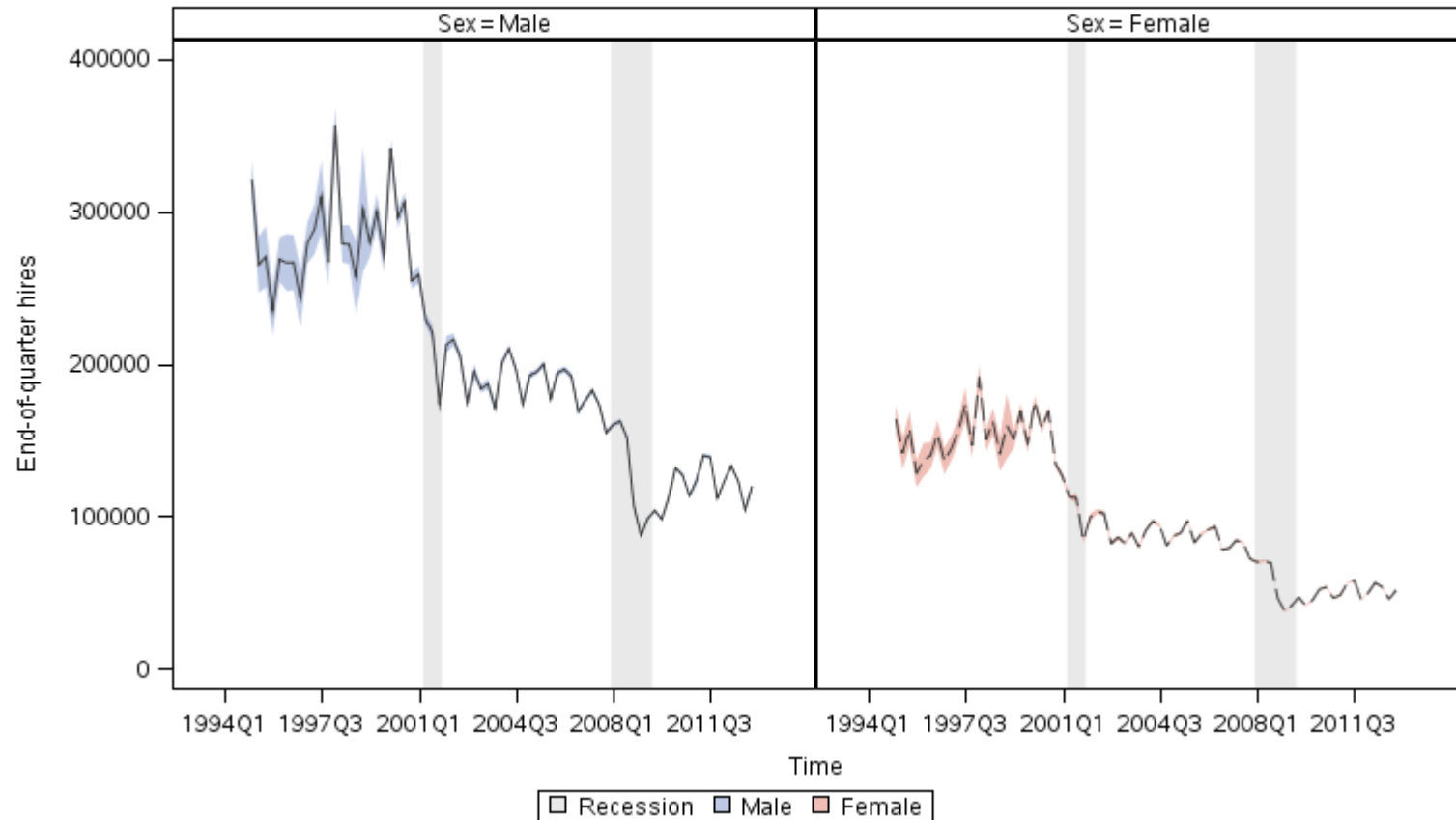
# Cross-tabulations

Industry	Demo- graphics	Firm age/ size	Owner-ship	Latest or planned beta Release	Current or Planned production release
NAICS Sector	SA, SE	F	P	R2015 Q1	R2015Q3
NAICS Sector	RH	F	P	R2015 Q2	R2015Q3
NAICS Sector	SA, SE, RH	FA, FS	P	R2015 Q3	R2015Q4
NAICS (3-digit)	SA, SE, RH	F,FA, FS	P	R2015 Q3	R2015Q4
all	SA, SE, RH	FA, FS	LSP	R2015 Q4	R2016Q1

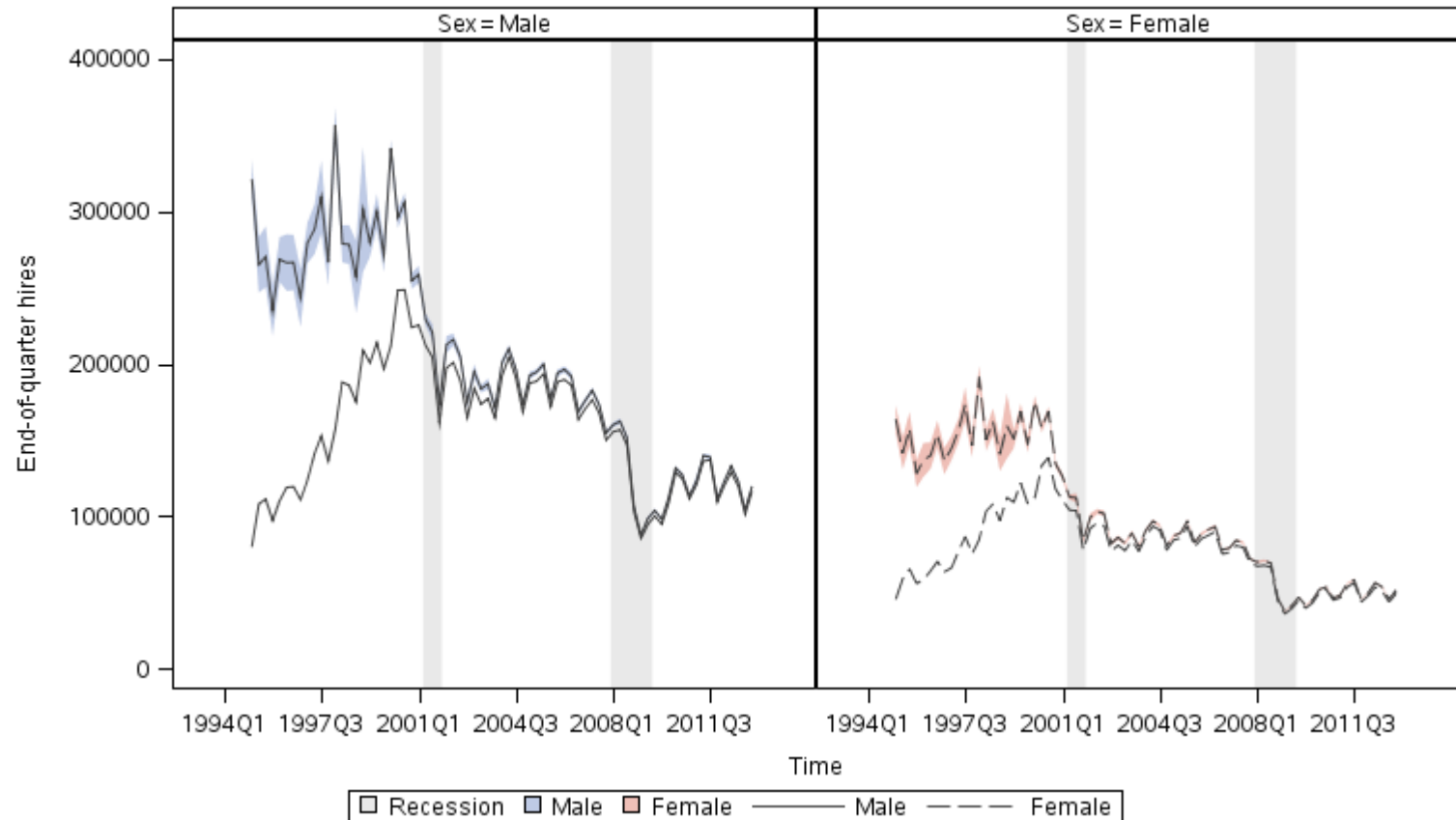


# Samples

**NAICS Sector Manufacturing , Age group 35-44**  
**industryfmt=Manufacturing agegrpfmt=35-44**



**NAICS Sector Manuf , Age group 35-  
NAICS Sector=Manuf Age=35-**

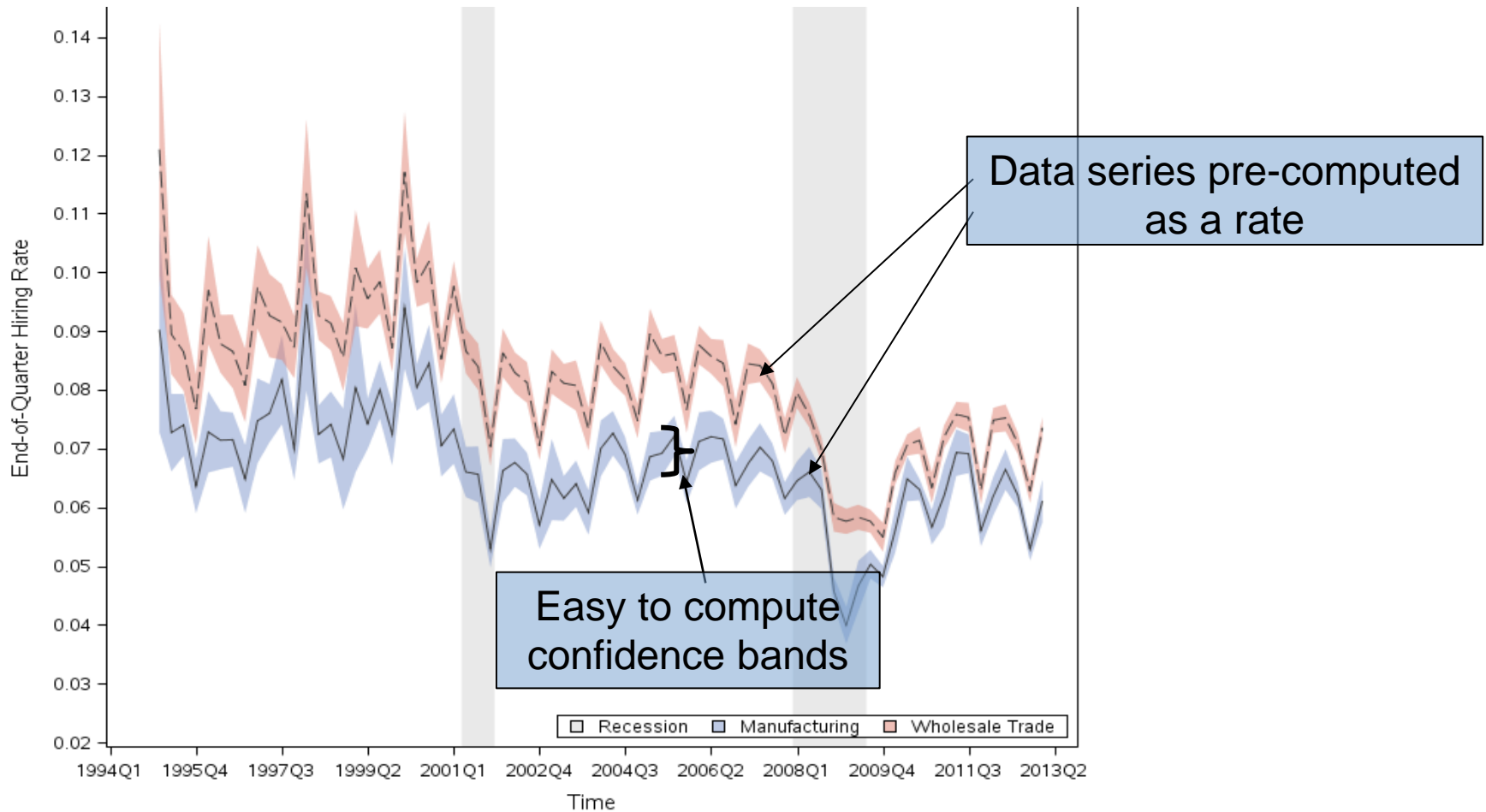


# New features

# New features

- QWI in rates instead of levels (e.g. *Hiring rate* instead of *Count of Hires*)
- Variability measures
  - Standard errors
  - And a few additional measures
  - (see <http://go.usa.gov/3EDUG> for info)
- Formalized schema
  - Machine-readable definitions of all metadata in central location

# End-of-quarter hiring rate for men 35-44



# Schema documentation

[http://lehd.ces.census.gov/data/schema/v4.1b-draft/lehd\\_public\\_use\\_schema.html](http://lehd.ces.census.gov/data/schema/v4.1b-draft/lehd_public_use_schema.html)



# Schema documentation

[http://lehd.ces.census.gov/data/schema/v4.1b-draft/lehd\\_public\\_use\\_schema.html](http://lehd.ces.census.gov/data/schema/v4.1b-draft/lehd_public_use_schema.html)

## LEHD Public Use Data Schema v4.1b-draft

Lars Vilhuber  
<[lars.vilhuber@census.gov](mailto:lars.vilhuber@census.gov)>  
09 June 2015

### Table of Contents

#### 1. Basic Schema

##### 1.1. Generic structure

##### 1.2. Identifiers

##### 1.2.1. Mapping for Identifiers

##### 1.2.2. Identifiers for j2i

##### 1.2.3. Identifiers for j2jod

##### 1.2.4. Identifiers for qwi

##### 1.3. Indicators

##### 1.3.1. National OMI and state-level OMI (OWIPU)

##### 1.3.2. National OMI and state-level OMI rates (OWIPUR)

##### 1.3.3. Job-to-job flow counts (J2J)

##### 1.3.4. Job-to-job flow rates (J2JR)

##### 1.3.5. Job-to-job flow Origin-Destination (J2JOD)

##### 1.4. Variability measures

##### 1.4.1. Generic structure

##### 1.4.2. National OMI and state-level OMI

##### 1.4.3. National OMI and state-level OMI rates

##### 1.4.4. Job-to-job flow counts (J2J)

##### 1.4.5. Job-to-job flow rates (J2JR)

##### 1.4.6. Job-to-job flow Origin-Destination (J2JOD)

#### 2. Categorical Variables

##### 2.1. agegrp

##### 2.2. education

##### 2.3. ethnicity

##### 2.4. firmage

##### 2.5. firmsize

##### 2.6. ownercode

##### 2.7. periodicity

##### 2.8. quarter

##### 2.9. race

##### 2.10. seasonadj

##### 2.11. sex

##### 2.12. Industry

##### 2.12.1. Industry levels

##### 2.12.2. Industry

##### 2.13. Geography

##### 2.13.1. Geographic levels

##### 2.13.2. National and state-level values

##### 2.13.3. Detailed state and substate level values

##### 2.14. Aggregation level

#### 3. Status flags

#### 4. Changes

##### 4.1. This version from previous releases of this document

##### 4.2. Version 4.1c-draft from 4.0

( [Printable version](#) )



#### Important

This specification is draft. Feedback is welcome. Please write us at [erika.mcentarfer@census.gov](mailto:erika.mcentarfer@census.gov) or [lars.vilhuber@census.gov](mailto:lars.vilhuber@census.gov).

The public-use data from the Longitudinal Employer-Household Dynamics Program, including the Quarterly Workforce Indicators (QWI) and Job-to-Job Value (CSV) files through the LEHD website's Data page at <http://lehd.ces.census.gov/data/>.

This document describes the data schema for LEHD files. For each variable, a set of allowable values is defined. Definitions are provided as CSV files, with

<http://go.usa.gov/3dyE5>

#### 2.2. education

( [label\\_education.csv](#) )

education	label
E0	All Education Categories
E1	Less than high school
E2	High school or equivalent, no college
E3	Some college or Associate degree
E4	Bachelor's degree or advanced degree
E5	Educational attainment not available (workers ag

#### 2.3. ethnicity

( [label\\_ethnicity.csv](#) )

ethnicity	label
A0	All Ethnicities
A1	Not Hispanic or Latino
A2	Hispanic or Latino

#### 2.4. firmage

( [label\\_firmage.csv](#) )

firmage	label
---------	-------



# Thank you

**Questions: Lars Vilhuber**  
**[lars.vilhuber@census.gov](mailto:lars.vilhuber@census.gov)**