

# What's Going On

## LODES & OnTheMap Updates

Matthew Graham  
Geographer  
LEHD

June 23, 2015

# Overview

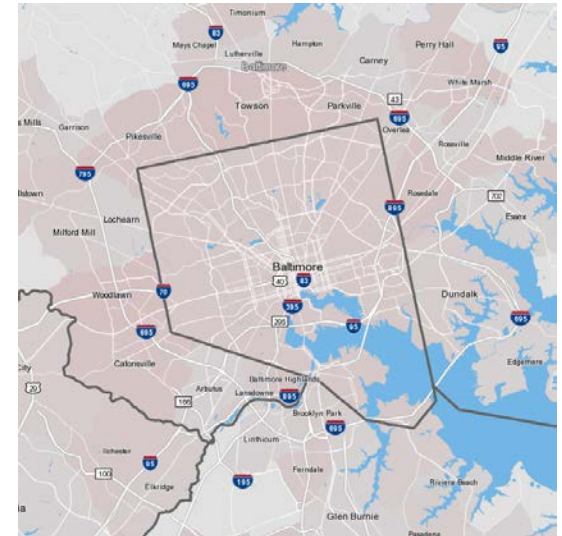
- New LODES Data
- OnTheMap Application Updates
- OnTheMap for Emergency Management Updates

# New LODES Data

- Major data sourcing and sharing agreement issues have been resolved
  - State/Federal MOUs, Residence Data
- 2012 data are being processed **right now...**  
and should be available in OnTheMap and raw data form in about 2 weeks
- 2013 data should be available in 4-6 weeks
- 2014 data targeted for the end of the year

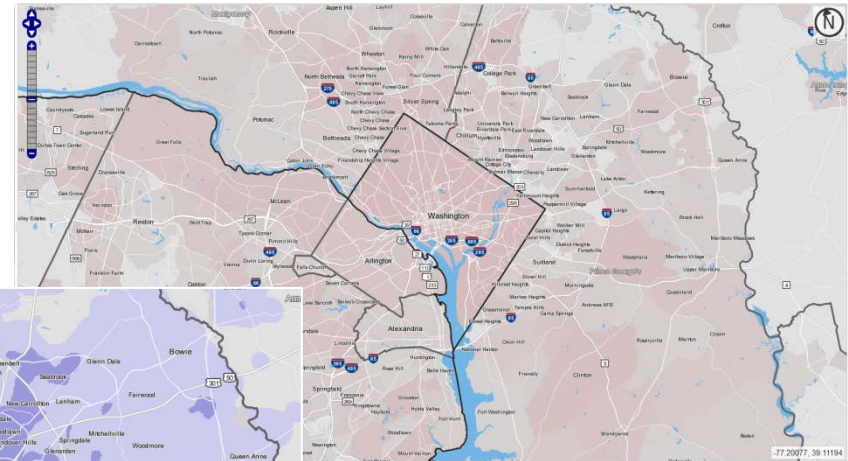
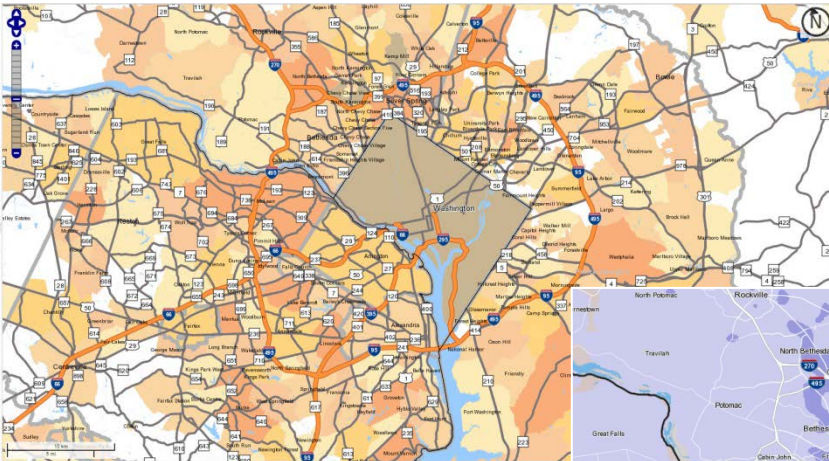
# OnTheMap Application Updates

- December 2014: Version 6.3 Released
  - Updated Road network – now using OpenStreetMap data
  - Updated cartography, data should be easier to see and reference layers clearer and more distinguishable
  - Bug fixes



# OnTheMap Cartography Update

- Reference geography (roads, states, counties, etc.) more subtle, less visually intrusive
- Focus users on the data results



Old Cartography

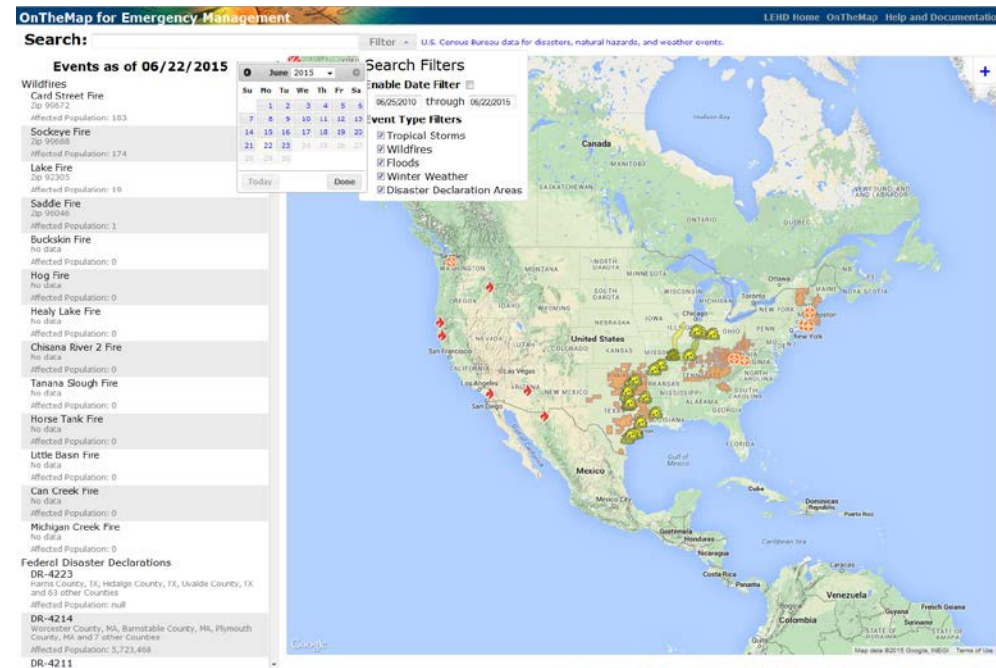
New Cartography

# OnTheMap Application Updates

- Coming very soon:
  - 2012 LODES Data
  - 2014 TIGER Geography (Updated political and statistical boundaries)
- And a little later:
  - 2013 LODES Data

# OnTheMap for Emergency Management Application Updates

- April 2015: Version 4.2 Released
  - Updated to 2009-2013 ACS 5-year estimates
  - Added date searching/filtering
  - Added historical date view
- Coming very soon:
  - 2012 LODES data
- And a little later:
  - 2013 LODES data





# Feedback

- Questions for us:
  - [CES.OnTheMap.Feedback@census.gov](mailto:CES.OnTheMap.Feedback@census.gov)
- Announcements/Discussion/Questions for the community
  - [lehd-onthemap@lists.census.gov](mailto:lehd-onthemap@lists.census.gov)
  - Sign up at:  
<http://lists.census.gov/mailman/listinfo/lehd-onthemap>



# Thanks!

- OnTheMap
  - <http://onthemap.ces.census.gov/>
- OnTheMap for Emergency Management
  - <http://onthemap.ces.census.gov/em.html>
- LODES Data
  - <http://lehd.ces.census.gov/data/#lodes>