

A New Analysis Tool for QWIs: QWI Explorer

Unlocking the Powerful Labor-force Information
of the Quarterly Workforce Indicators

Heath Hayward
Geographer
LEHD Program
Center for Economic Studies
September 9, 2014

Why are QWIs Important?

- Indicators on Employment, Employment Change (Firm and Individual), and Earnings
- Detailed Firm Characteristics (geography, industry, age, size)
- Detailed Worker Demographics (sex, age, education, race, ethnicity)
- 3 Quarter lag, coverage varies by state
- Used by economic developers, urban planners, policy analysts, workforce researchers, and academics



LEHD's QWI Dissemination Strategy

- Provide a wide variety of access points to the data to accommodate as many user needs as possible
- Advanced data users: Bulk download of raw QWIPU from <http://lehd.ces.census.gov/pub/>
- Advanced data users: Access single raw QWIPU files from <http://lehd.ces.census.gov/data/#qwi>
- Intermediate data users: Extract the exact indicators and characteristics needed using the LED Extraction Tool
- Web tool users: Create your own table, chart, and map using the flexible user-interface of QWI Explorer

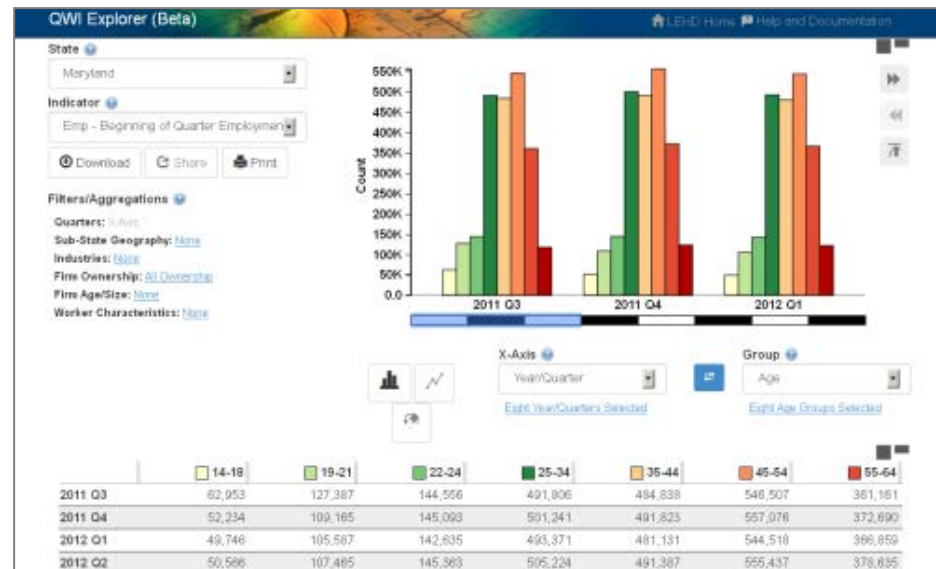
The LED Extraction Tool

- Raw data access point for data products created through the Local Employment Dynamics Partnership
- Quarterly Workforce Indicators (QWI) available in current version
- Streamlined interface allows users to select the exact columns and rows desired
- Raw data outputs (no maps, charts, or formatted tables)

The screenshot displays the 'LED Extraction Tool (Beta)' web interface. At the top, there are navigation tabs: '1. Area of Interest', '2. Firm Characteristics', '3. Worker Characteristics', '4. Indicators', '5. Quarters', and '6. Summary and Export'. The 'Area of Interest' tab is active. On the left, a 'States' dropdown menu is open, showing a list of U.S. states with 'Alabama' selected. To the right of the state list, a map of Alabama is shown with the text 'Alabama' and 'Counties: 67, Metro/Micropolitan Areas: 26, Workforce Investment Areas: 10'. Below the map, there are three sub-sections: 'Geography Types' (with 'States', 'Counties', 'Micro/Metropolitan Areas', and 'Workforce Investment Areas' options), 'Areas' (with a search bar and 'Check All | Check None | Invert Selection' buttons), and a list of counties with checkboxes. The 'Counties' section is expanded, showing a list of counties with their FIPS codes and names, such as '01001 Autauga, AL' and '01003 Baldwin, AL'. A 'Continue with Selected Areas' button is at the bottom right. A note at the bottom states: 'Note: A state-level summary will be included in the results for all sub-state geography types.'

What is QWI Explorer?

- New analysis tool for accessing the Quarterly Workforce Indicators (QWI) dataset
- Beta release makes all 32 indicators available in a pivot chart/table interface
- Compare, rank, and aggregate QWIs by time, geography, and firm and worker characteristics on the fly
- Companion application to the raw data outputs from the LED Extraction Tool



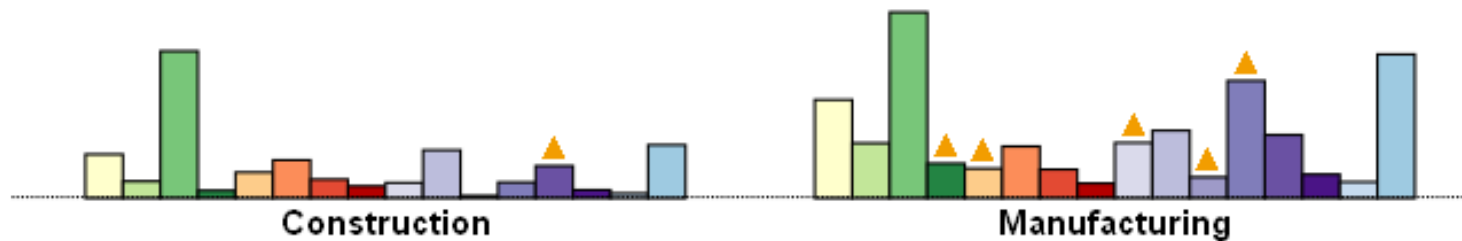
Why Build This Tool?

		<div> <div></div> Agriculture, Forestry, Fishing and Hunting </div>	<div> <div></div> Mining, Quarrying, and Oil and Gas Extraction </div>
Androscoggin, ME	540		
Aroostook, ME	2,136		
Cumberland, ME	442		42
Franklin, ME	217		

- Feedback from users!
- Make entire set of QWIs available
(32 indicators for 50 partner states) in an intuitive analysis tool
- Allow users to fully explore the detailed interactions between workers and firms via interactive tables, charts, and maps
- Broaden the user base for QWIs by making these complex data more accessible
- Replace the QWI Online and Industry Focus applications with a more useful and more modern web tool


Application Design Goals

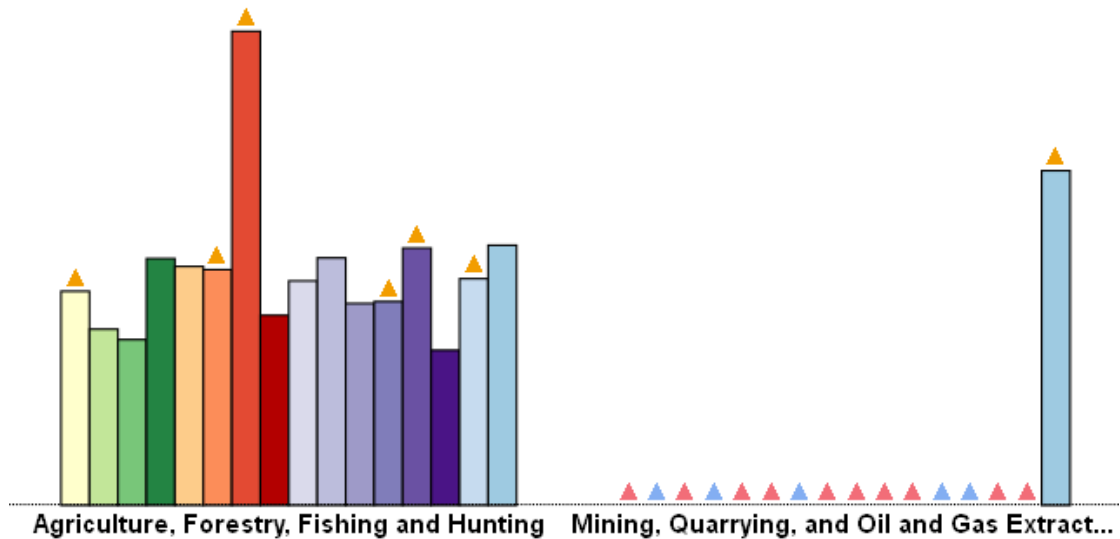
- Simple, clean, flat interface
- Display an interactive table that is linked to an interactive chart/map
- Allow users to build the exact data combinations/comparisons needed to analyze their workforce question
- Provide useful and beautiful exports
- Make contextual help and documentation readily available



Live Demo!

Under the Hood

- 7 TB database - 49 States plus DC (MA coming soon)
- Refreshed every quarter – Rolling production
- No downtime for users – States are loaded at midnight, check  icon for states currently being loaded.



Recent and Upcoming Functionality Improvements

- Improved and Additional Exports (just released!)
- Thematic Maps
- Group by Indicator
- Social Media Sharing
- National QWIs
- Cross State Comparisons

Download Data

- ☒ Download Table as XLSX (includes Data, Settings, and Metadata)
- ☐ Download Table as ZIP (includes CSV, Settings, and Metadata)
- ☐ Download Raw Data as ZIP (includes CSV, Labels, and Metadata)

Download Chart

- ☐ Download Chart as SVG
- ☐ Download Chart as PNG

Image Size:

Small

Large

Extra Large

Custom

☒ Include Chart Legend

Tentative Release Schedule

- **4/14/2014** – Beta release of QWI Explorer (bar chart only)
- **7/22/2014** – Code update (line charts and bug fixes)
- **9/8/2014** – Code update (improved exports and bug fixes)
- **12/2014** – Release version 1.0 (thematic mapping, sharing, share of total)
- **4/2015** – Release version 1.1 (add National QWIs, state comparisons, group by Indicator)

Thank You!

- Please submit feedback to
CES.QWI.Feedback@census.gov