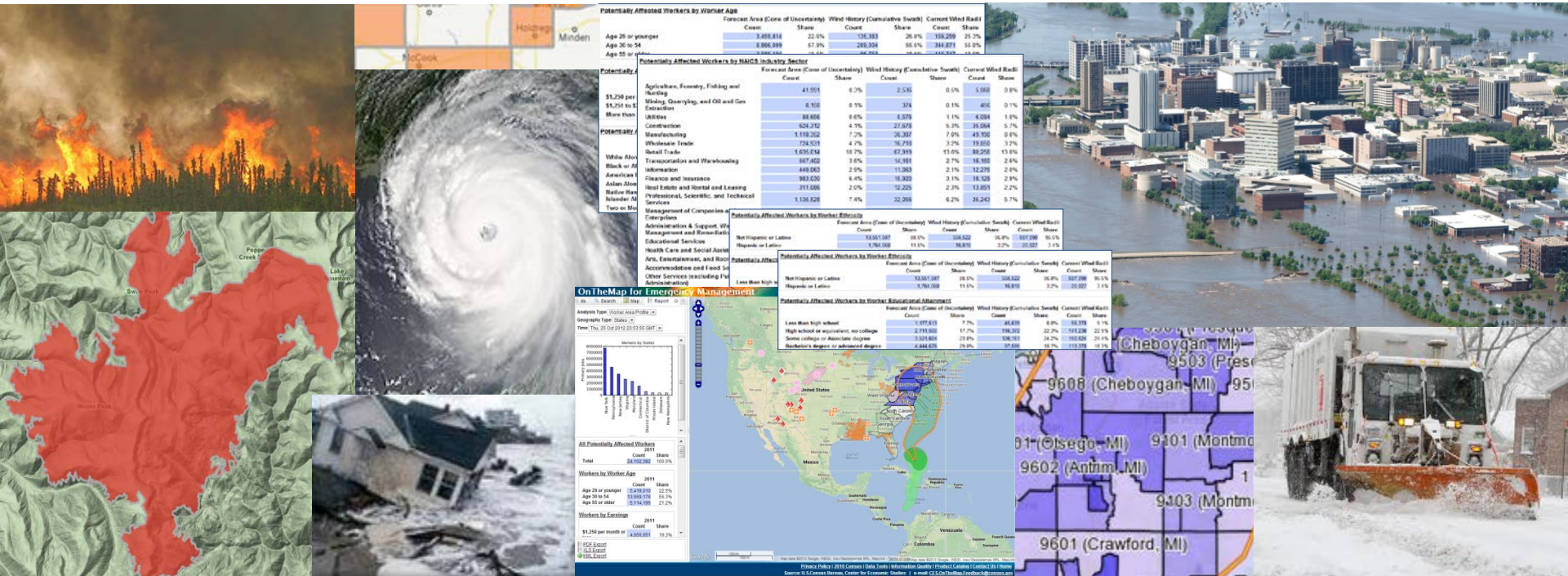
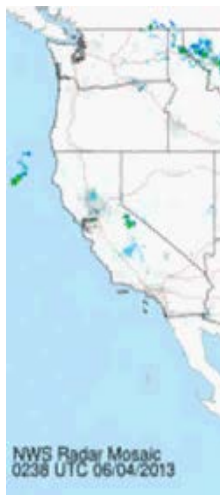


OnTheMap for Emergency Management



Robert Pitts
Geographer/Project Manager
OnTheMap for Emergency Management
Center for Economic Studies- LEHD
U.S. Census Bureau

Real-

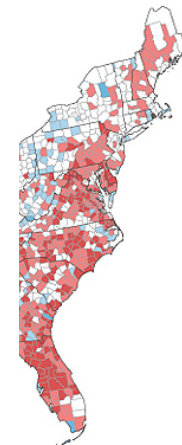


© D.Fletcher for CloudTweaks.com

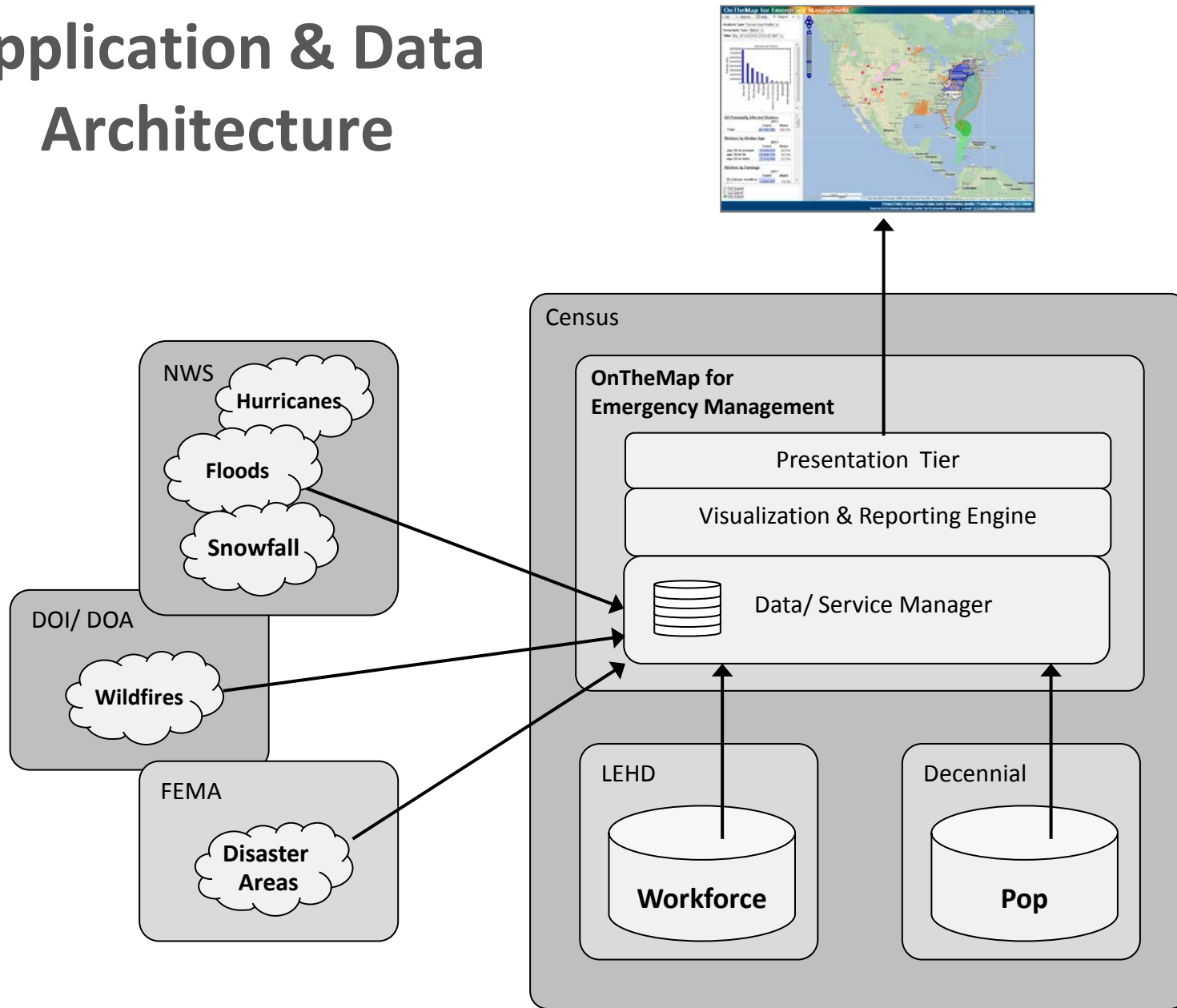
HOW'S THE
BIG DATA PROJECT
COMING ALONG,
HOSKINS?



graphic
Data



Application & Data Architecture



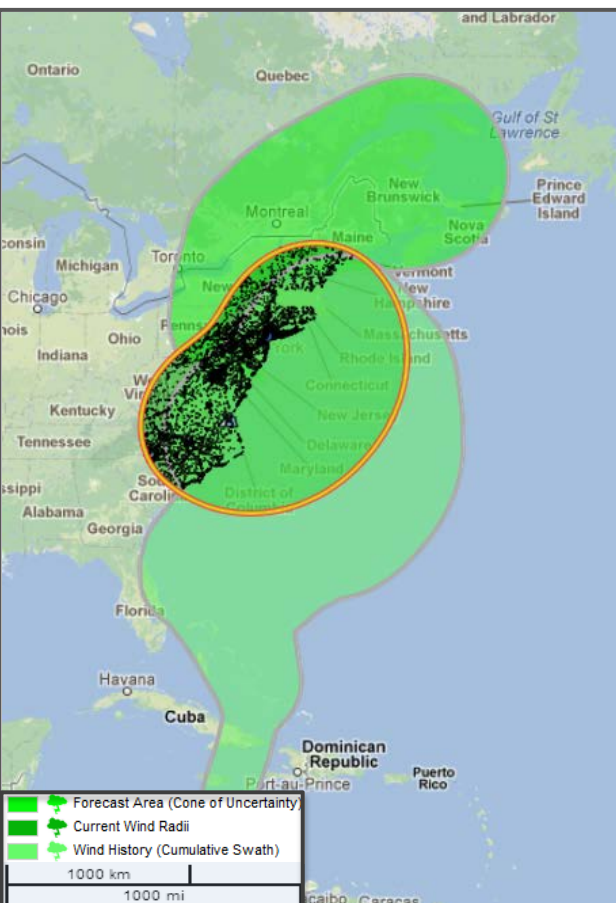
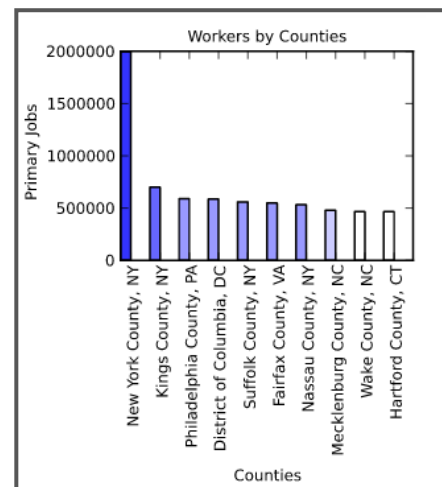
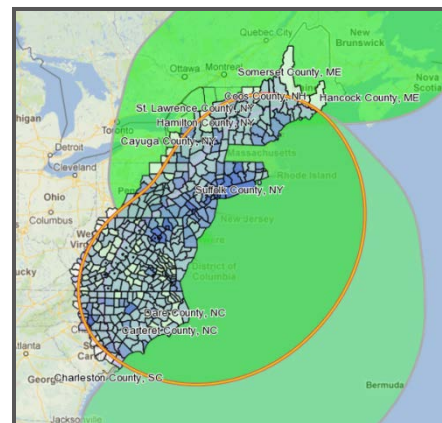
Hurricane Sandy - October 29, 2012

Population

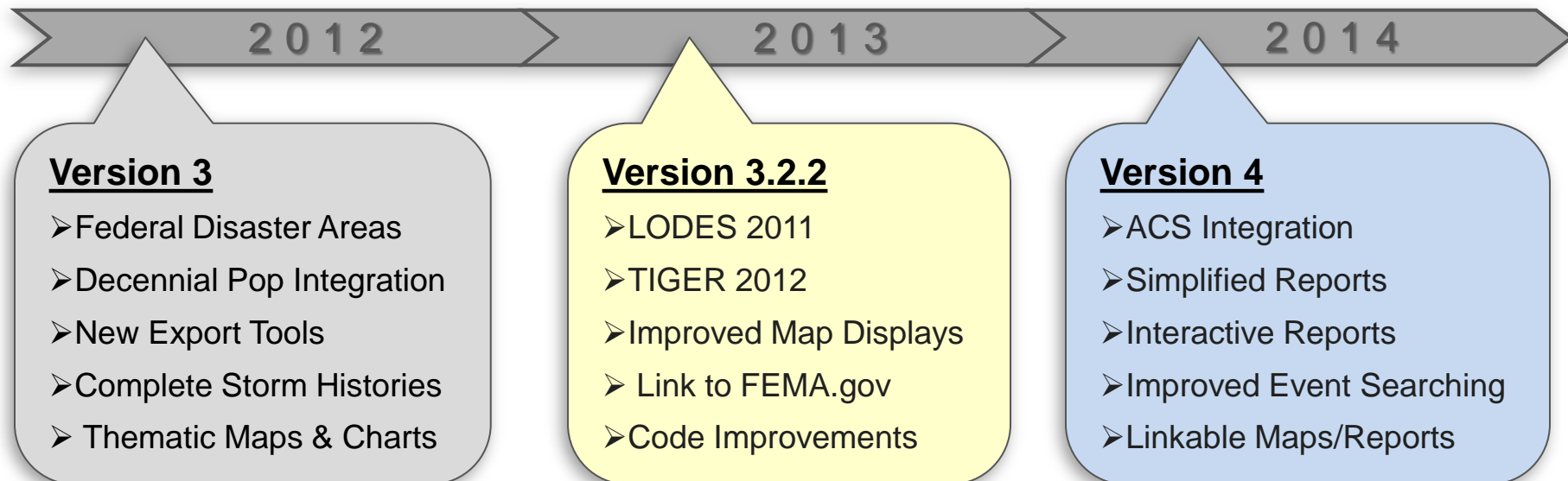
Potentially Affected Population			
	2010		
Total	Count	Share	
	71,760,434	100.0%	
Population by Age			
	2010		
	Count	Share	
Under 18	16,375,088	22.8%	
18 and over	55,385,346	77.2%	
20 - 24	4,970,646	6.9%	
25 - 34	9,419,405	13.1%	
35 - 49	15,337,756	21.4%	
50 - 64	14,021,232	19.5%	
65 and above	9,569,247	13.3%	
Population by Race			
	2010		
	Count	Share	
White	49,868,408	69.5%	
African American	11,924,439	16.6%	
Asian	3,935,553	5.5%	
AIAN	346,796	0.5%	
NHPI	34,316	0.0%	
Some Other Race	3,737,111	5.2%	
Two or More Races	1,913,811	2.7%	
Population by Ethnicity			
	2010		
	Count	Share	
Hispanic or Latino	8,773,218	12.2%	
Not Hispanic or Latino	62,987,216	87.8%	
Population by Sex			
	2010		
	Count	Share	
Male	34,854,449	48.6%	
Female	36,905,985	51.4%	
Housing Units			
	2010		
	Count	Share	
Total Housing	30,500,112	100.0%	
Vacant	3,155,139	10.3%	
Occupied	27,344,973	89.7%	
Occupied Housing Units			
	2010		
	Count	Share	
Occupied	27,344,973	100.0%	
Owner-Occupied	17,209,972	62.9%	
Renter-Occupied	10,135,001	37.1%	
Vacant Housing Units			
	2010		
	Count	Share	
Vacant	3,155,139	100.0%	
For Rent	824,527	26.1%	
For Sale	362,819	11.5%	
Occasional Use	1,137,358	36.0%	
Population by Housing			
	2010		
	Count	Share	
Owner Occupied Population	45,694,935	63.7%	
Renter Occupied Population	23,999,107	33.4%	

Workforce

All Potentially Affected Workers			
	2010		
Total	Count	Share	
	25,903,062	100.0%	
Workers by Worker Age			
	2010		
	Count	Share	
Age 29 or younger	5,774,996	22.3%	
Age 30 to 54	14,879,887	57.4%	
Age 55 or older	5,248,179	20.3%	
Workers by Earnings			
	2010		
	Count	Share	
\$1,250 per month or less	5,021,522	19.4%	
\$1,251 to \$3,333 per month	8,834,436	34.1%	
More than \$3,333 per month	12,047,104	46.5%	
Workers by NAICS Industry Sector			
	2010		
	Count	Share	
Agriculture, Forestry, Fishing and Hunting	81,516	0.3%	
Mining, Quarrying, and Oil and Gas Extraction	23,961	0.1%	
Utilities	136,408	0.5%	
Construction	1,073,974	4.1%	
Manufacturing	2,043,695	7.9%	
Wholesale Trade	1,127,708	4.4%	
Retail Trade	2,794,541	10.8%	
Transportation and Warehousing	877,997	3.4%	
Information	663,577	2.6%	
Finance and Insurance	1,393,256	5.4%	
Real Estate and Rental and Leasing	433,391	1.7%	
Professional, Scientific, and Technical Services	2,027,568	7.8%	
Management of Companies and Enterprises	488,735	1.9%	
Administration & Support, Waste Management and Remedial Services	1,337,919	5.2%	
Educational Services	2,730,876	10.5%	
Health Care and Social Assistance	3,938,198	15.2%	
Arts, Entertainment, and Recreation	391,272	1.5%	
Accommodation and Food Services	1,875,018	7.2%	
Other Services (excluding Public Administration)	898,344	3.5%	
Public Administration	1,565,108	6.0%	
Workers by Worker Educational Attainment			
	2010		
	Count	Share	
Less than high school	2,035,777	7.9%	
High school or equivalent, no college	4,982,304	19.2%	
Some college or Associate degree	6,052,331	23.4%	
Bachelor's degree or advanced degree	7,057,654	27.2%	
Workers by Worker Race			
	2010		
	Count	Share	
White Alone	19,878,654	76.7%	
Black or African American Alone	4,174,550	16.1%	
American Indian or Alaska Native Alone	121,519	0.5%	
Asian Alone	1,409,756	5.4%	
Native Hawaiian or Other Pacific Islander Alone	29,800	0.1%	
Two or More Race Groups	288,783	1.1%	
Workers by Inflow/Outflow Job Counts			
	2010		
	Count	Share	
Employed in the Event Area	25,903,062	-	
Employed in the Event Area but Living Outside	602,440	-	
Employed and Living in the Event Area	25,300,622	-	
Living in the Event Area	25,852,467	-	
Living in the Event Area but Employed Outside	551,845	-	
Employed and Living in the Event Area	25,300,622	-	



Versions



Recent Version 3 Updates

Analysis Menu
Re-order

New Winter Storm Detail

Improved Symbolology

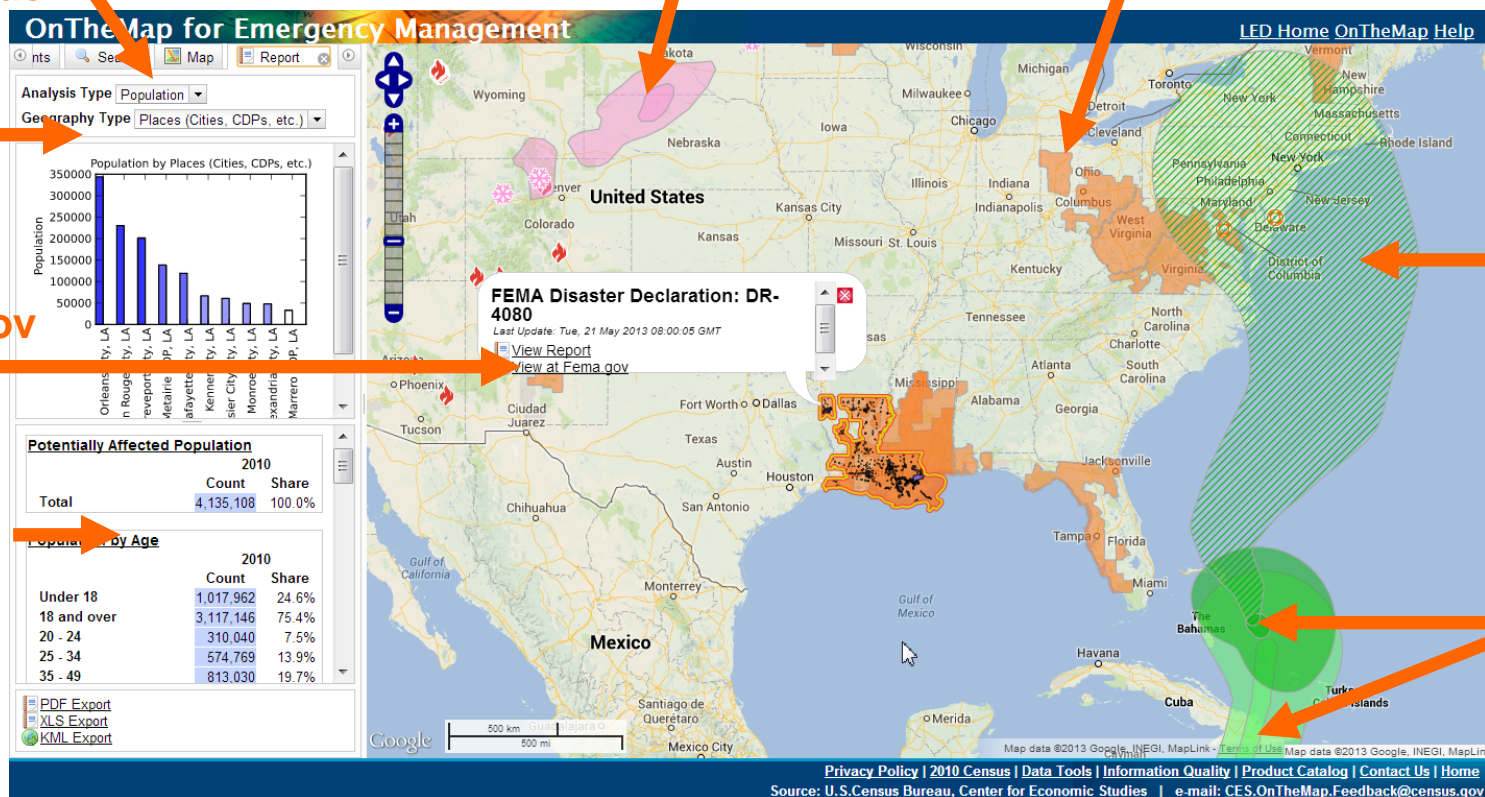
TIGER
2012

Fema.gov
Link

LODES
2011

Forecast
Area

New
Hurricane
Detail



Future Improvements

- **ACS Integration**
- **Simplified Reports**
- **Interactive Reports**
- **Improved Event Searching**
- **Linkable/Shareable Maps & Reports**

Local Employment Dynamics

Population Characteristics

Potentially Affected Population

	2010 Count	Share
Total	70,321,291	100.00%

Population by Age

	2010 Count	Share
Under 18	15,962,008	22.70%
18 and over	54,359,283	77.30%
20 - 24	4,877,613	6.90%
25 - 34	9,223,853	13.10%
35 - 49	14,988,433	21.30%
50 - 64	13,767,686	19.60%
65 and above	3,477,040	13.50%

Population by Race

	2010 Count	Share
White	48,800,123	69.40%
African American	11,578,272	16.50%
Asian	3,327,102	5.60%
AIAN	344,163	0.50%
NIPI	34,325	0.00%
Some Other Race	3,75,449	5.30%
Two or More Races	1,921,251	2.70%

Population by Ethnicity

	2010 Count	Share
Hispanic or Latino	3,041,259	12.30%
Not Hispanic or Latino	61,280,032	87.10%

Population by Sex

	2010 Count	Share
Male	34,147,208	48.60%
Female	36,174,083	51.40%

Language Spoken at Home

	Estimate	Percent	Margin of Error	Percent Margin of Error
Population 5 years and over	286,433,395	286,433,395	+/-3,860	(X)
English only	228,216,716	79.7%	+/-110,799	+/-0.1
Language other than English	58,216,679	20.3%	+/-108,708	+/-0.1
Speak English less than "very well"	24,950,788	8.7%	+/-65,420	+/-0.1
Spanish	36,170,544	12.6%	+/-60,305	+/-0.1
Speak English less than "very well"	16,433,118	5.7%	+/-39,695	+/-0.1
Other Indo-European languages	10,529,052	3.7%	+/-41,021	+/-0.1
Speak English less than "very well"	3,394,672	1.2%	+/-25,165	+/-0.1
Asian and Pacific Islander languages	3,111,546	3.2%	+/-27,811	+/-0.1
Speak English less than "very well"	4,386,513	1.5%	+/-19,347	+/-0.1
Other languages	2,405,537	0.8%	+/-18,224	+/-0.1
Speak English less than "very well"	736,485	0.3%	+/-8,434	+/-0.1

Disability Status of the Civilian Noninstitutionalized Population

	Estimate	Percent	Margin of Error	Percent Margin of Error
Total Civilian Noninstitutionalized Population	228,216,716	79.7%	+/-110,799	+/-0.1
With a disability	58,216,679	20.3%	+/-	+/-0.1
Under 18 years	24,950,788	8.7%	+/-65,420	+/-0.1
With a disability	36,170,544	12.6%	+/-60,305	+/-0.1
18 to 64 years	16,433,118	5.7%	+/-39,695	+/-0.1
With a disability	10,529,052	3.7%	+/-41,021	+/-0.1
65 years and over	3,111,546	3.2%	+/-27,811	+/-0.1
With a disability	4,386,513	1.5%	+/-19,347	+/-0.1

Vehicles Available

	Estimate	Percent	Margin of Error	Percent Margin of Error
No vehicles available	10,680,756	9.3%	+/-45,225	+/-0.1
1 vehicle available	39,218,050	34.1%	+/-30,342	+/-0.1
2 vehicles available	43,078,325	37.5%	+/-121,236	+/-0.1
3 or more vehicles available	22,013,994	19.1%	+/-80,056	+/-0.1

Housing Characteristics

Housing Units

	2010 Count	Share
Total Housing	29,370,714	100.00%
Vacant	3,157,669	10.50%
Occupied	26,813,045	89.50%

Occupied Housing Units

	2010 Count	Share
Occupied	26,813,045	100.00%
Owner-Occupied	16,822,008	62.70%
Renter-Occupied	9,991,037	37.30%

Vacant Housing Units

	2010 Count	Share
Vacant	3,157,669	100.00%
For Rent	821,164	26.00%
For Sale	368,283	11.70%
Occasional Use	1,168,442	37.00%

Population by Housing

	2010 Count	Share
Owner-Occupied Population	44,637,633	63.50%
Renter-Occupied Population	23,688,557	33.70%

Units in Housing Structure

	Estimate	Percent	Margin of Error	Percent Margin of Error
Total housing units	132,316,248	132,316,248	+/-3,717	(X)
1-unit, detached	81,352,575	61.5%	+/-116,331	+/-0.1
1-unit, attached	7,682,855	5.8%	+/-38,005	+/-0.1
2 units	5,016,336	3.8%	+/-38,367	+/-0.1
3 or 4 units	5,911,457	4.5%	+/-38,238	+/-0.1
5 to 9 units	6,285,575	4.8%	+/-40,439	+/-0.1
10 to 19 units	5,902,969	4.5%	+/-43,806	+/-0.1
20 or more units	11,460,170	8.7%	+/-49,222	+/-0.1
Mobile home	8,591,522	6.5%	+/-48,606	+/-0.1
Boat, RV, van, etc.	113,089	0.1%	+/-7,829	+/-0.1

Year Structure Built

	Estimate	Percent	Margin of Error	Percent Margin of Error
Total housing units	132,316,248	132,316,248	+/-3,717	(X)
Built 2005 or later	9,124,464	6.9%	+/-60,751	+/-0.1
Built 2000 to 2004	11,649,482	8.8%	+/-78,302	+/-0.1
Built 1990 to 1999	18,208,931	13.8%	+/-67,685	+/-0.1
Built 1980 to 1989	18,249,501	13.8%	+/-73,111	+/-0.1
Built 1970 to 1979	20,953,473	15.8%	+/-66,251	+/-0.1
Built 1960 to 1969	14,638,063	11.1%	+/-58,097	+/-0.1
Built 1950 to 1959	14,421,985	10.9%	+/-65,708	+/-0.1
Built 1940 to 1949	7,238,543	5.5%	+/-38,388	+/-0.1
Built 1939 or earlier	17,831,748	13.5%	+/-56,138	+/-0.1

Selected Characteristics

	Estimate	Percent	Margin of Error	Percent Margin of Error
Lacking complete plumbing facilities	678,556	0.6%	+/-16,380	+/-0.1
Lacking complete kitchen facilities	1,170,358	1.0%	+/-20,419	+/-0.1
No telephone service available	3,041,813	2.6%	+/-33,322	+/-0.1

Value

	Estimate	Percent	Margin of Error	Percent Margin of Error
Owner-occupied units	74,264,435	+/-230,440	(X)	
Less than \$50,000	6,536,366	8.0%	+/-46,774	+/-0.1
\$50,000 to \$99,999	11,916,860	16.0%	+/-71,426	+/-0.1
\$100,000 to \$149,999	12,230,945	16.5%	+/-63,725	+/-0.1
\$150,000 to \$199,999	11,437,518	15.4%	+/-55,876	+/-0.1
\$200,000 to \$299,999	13,511,178	18.2%	+/-55,854	+/-0.1
\$300,000 to \$499,999	11,306,069	15.2%	+/-49,362	+/-0.1
\$500,000 to \$999,999	5,850,178	7.9%	+/-33,420	+/-0.1
\$1,000,000 or more	1,472,701	2.0%	+/-17,130	+/-0.1
Median (dollars)	173,600	(X)	+/-252	(X)

Workforce Characteristics

All Potentially Affected Workers

	2010 Count	Share
Total	25,363,182	100.00%

Workers by States

	2010 Count	Share
New York	6,079,886	24.00%
New Jersey	3,447,615	13.60%
Pennsylvania	3,308,828	13.00%
Virginia	2,850,226	11.20%
Maryland	2,202,553	8.70%
North Carolina	2,021,619	8.00%
Connecticut	1,457,513	5.70%
Florida	1,215,222	4.80%
District of Columbia	586,058	2.30%
New Hampshire	552,533	2.20%

Workers by Inflow/Outflow Job Counts

	2010 Count	Share
Employed in the Event Area	25,363,182	-
Employed in the Event Area but Living Outside	1,004,284	-
Employed and Living in the Event Area	24,358,898	-
Living in the Event Area	25,344,691	-
Living in the Event Area but Employed Outside	985,793	-
Employed and Living in the Event Area	24,358,898	-

Workers by Worker Age

	2010 Count	Share
Age 23 or younger	5,668,802	22.40%
Age 30 to 54	14,541,149	57.30%
Age 55 or older	5,153,231	20.30%

Workers by Earnings

	2010 Count	Share
\$1,250 per month or less	4,898,857	19.30%
	6,537,442	33.90%
\$1,251 to \$3,333 per month		
More than \$3,333 per month	11,866,883	46.80%

Workers by NAICS Industry Sector

	2010 Count	Share
Agriculture, Forestry, Fishing and Hunting	94,623	0.30%
Mining, Quarrying, and Oil and Gas Extraction	14,440	0.10%

Workers by Worker Race

	2010 Count	Share
White Alone	19,448,271	76.70%
Black or African American Alone	4,062,235	16.00%
American Indian or Alaska Native Alone	120,331	0.50%
Asian Alone	1,410,206	5.60%
	30,237	0.10%
Native Hawaiian or Other Pacific Islander Alone		
Two or More Race Groups	291,302	1.10%

Workers by Worker Ethnicity

	2010 Count	Share
Not Hispanic or Latino	22,836,789	90.30%
Hispanic or Latino	2,466,383	9.70%

Workers by Worker Educational Attainment

	2010 Count	Share
Less than high school	2,000,394	7.90%
High school or equivalent, no college	4,732,135	18.90%
Some college or Associate degree	5,919,353	23.30%
Bachelor's degree or advanced degree	6,861,298	27.50%

Workers by Worker Sex

	2010 Count	Share
Male	12,402,409	48.90%
Female	12,960,773	51.10%

Improved Event Searching

New Event Search Tool

Recent Events List

OnTheMap for Emergency Management OnTheMap LEHD Home Help and Documentation

Search:

[Zoom To: Alaska](#) | [Hawaii](#) | [Lower 48](#)

[Happening Now](#) [Search](#) [Map](#)

This list shows all events OTM/EM has captured in the last 48 hours.

- Post-Tropical Cyclone Andrea**
Effected Population: 45,511,814
- Tropical Storm Andrea**
Effected Population: 45,511,814
- Beetown Fire near Graham AZ county**
Effected Population: 240
- Bitter Creek Fire near Southeast Fairbanks AK county**
Effected Population: 0
- Boggy Fire near Liberty FL county**
Effected Population: 0
- Doestock Creek Fire near Bethel AK county**
Effected Population: 0
- Powerhouse Fire near Los Angeles CA county**
Effected Population: 741
- Thompson Ridge Fire near Sandoval NM county**
Effected Population: 20
- Tres Lagunas Fire near San Miguel NM county**
Effected Population: 8
- Flooding in Blaine MT and Hill MT counties**
Effected Population: 77
- Flooding in Blaine MT and Hill MT counties**
Effected Population: 77
- Flooding in Bristol RI, Kent RI, Newport RI, Providence RI and Washington RI counties**
Effected Population: 202,729
- Flooding in Harnett NC, Lee NC and Wake NC counties**
Effected Population: 39,609
- Flooding in Illinois and Iowa**
Effected Population: 22,966

United States

Mexico

Map data ©2013 Google, INEGI, Inav/Geosistemas SRL, MapLink - Terms of Use

Privacy Policy | 2010 Census | Data Tools | Information Quality | Product Catalog | Contact Us | Home

Source: U.S.Census Bureau, Center for Economic Studies | e-mail: CES.OnTheMap.Feedback@census.gov

Thank You!

Tool URL: <http://onthemap.ces.census.gov/em.html>

Feedback: CES.OnTheMap.Feedback@census.gov