

BUILT In Ohio: Broadening Urban Investment to Leverage Transit

LED Partnership Workshop

March 9, 2011

Kyle Smith, CNT

About CNT



Policy Partnership With Three Ohio Regions



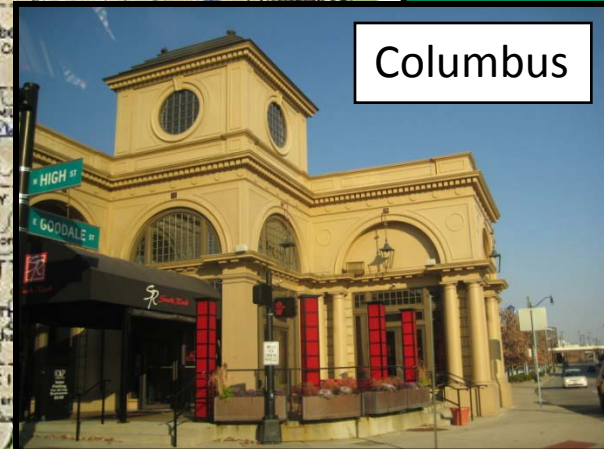
Cincinnati



Cleveland



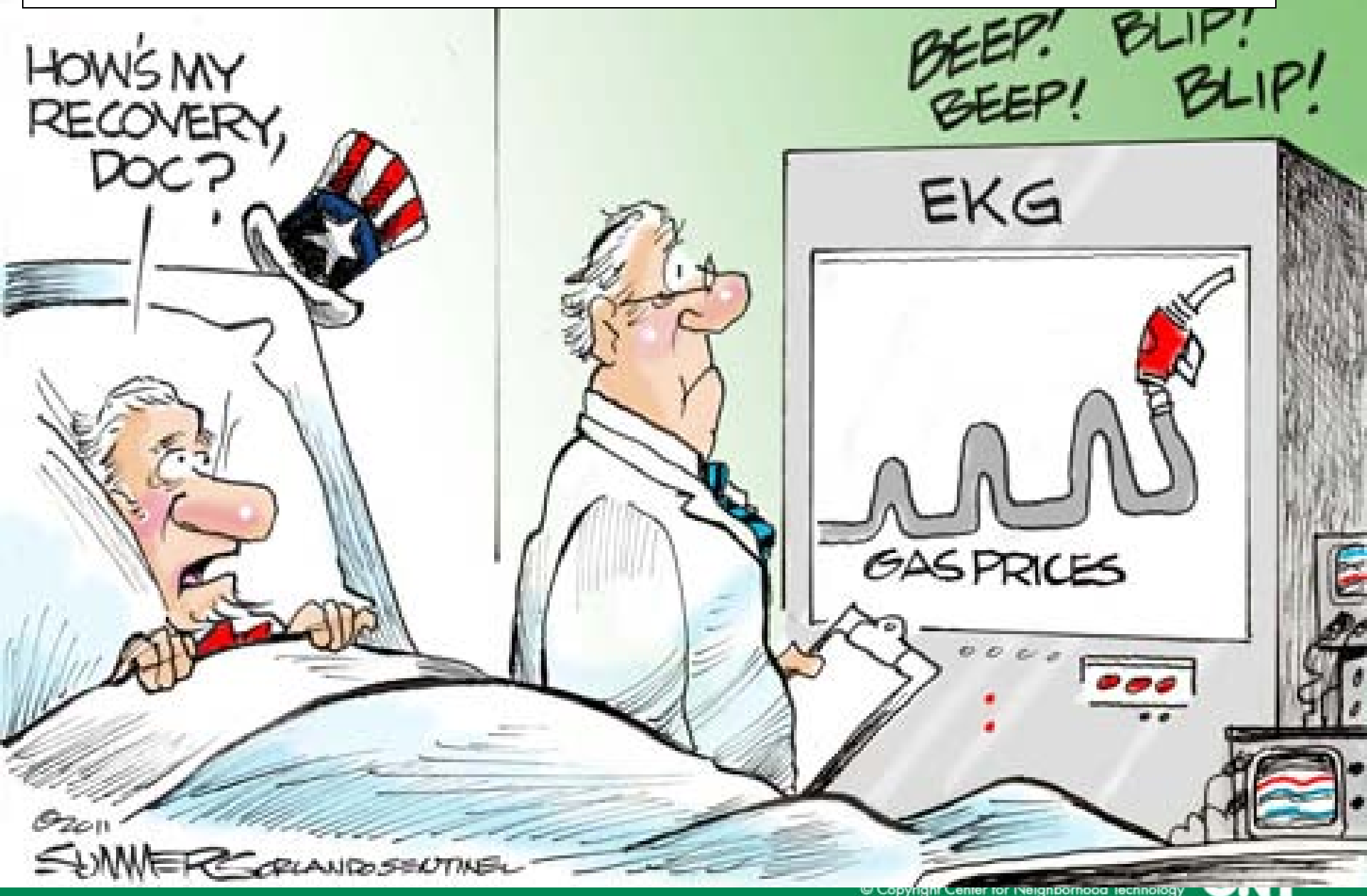
Columbus



Project Goal: Test Regional Leadership With New Ideas



Transportation Costs Threatening Economic Prosperity



Road to Recovery: Plan Around Existing Assets

Url



Employment Centers
& Job Density

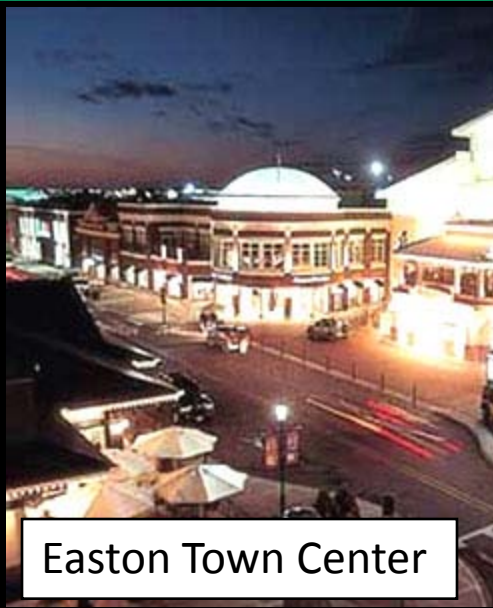
Method: Identifying Job Centers Using LED

Download all three full LED data sets for Ohio, 2002 – 2008:

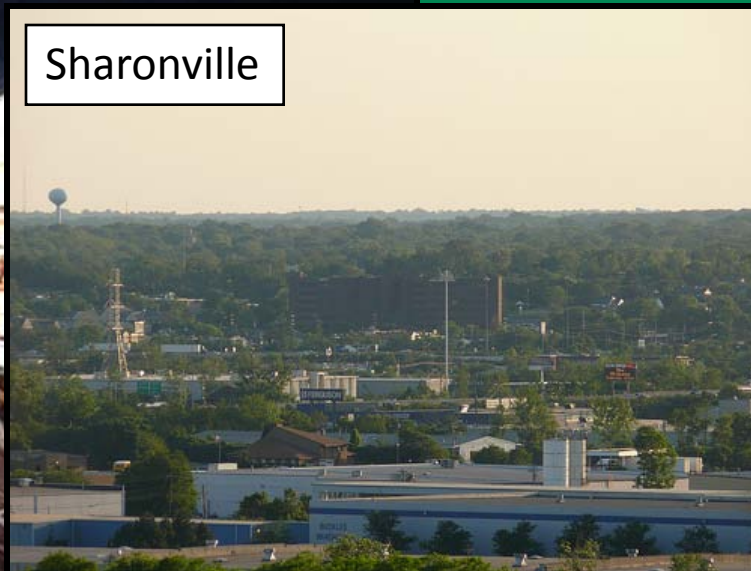
- Residential Area Characteristics
- Work Area Characteristics
- Origin/Destination

Cluster contiguous U.S. Census Block Groups with > 7 jobs per acre in 2008

Name them using municipal/neighborhood boundaries



Easton Town Center



Sharonville



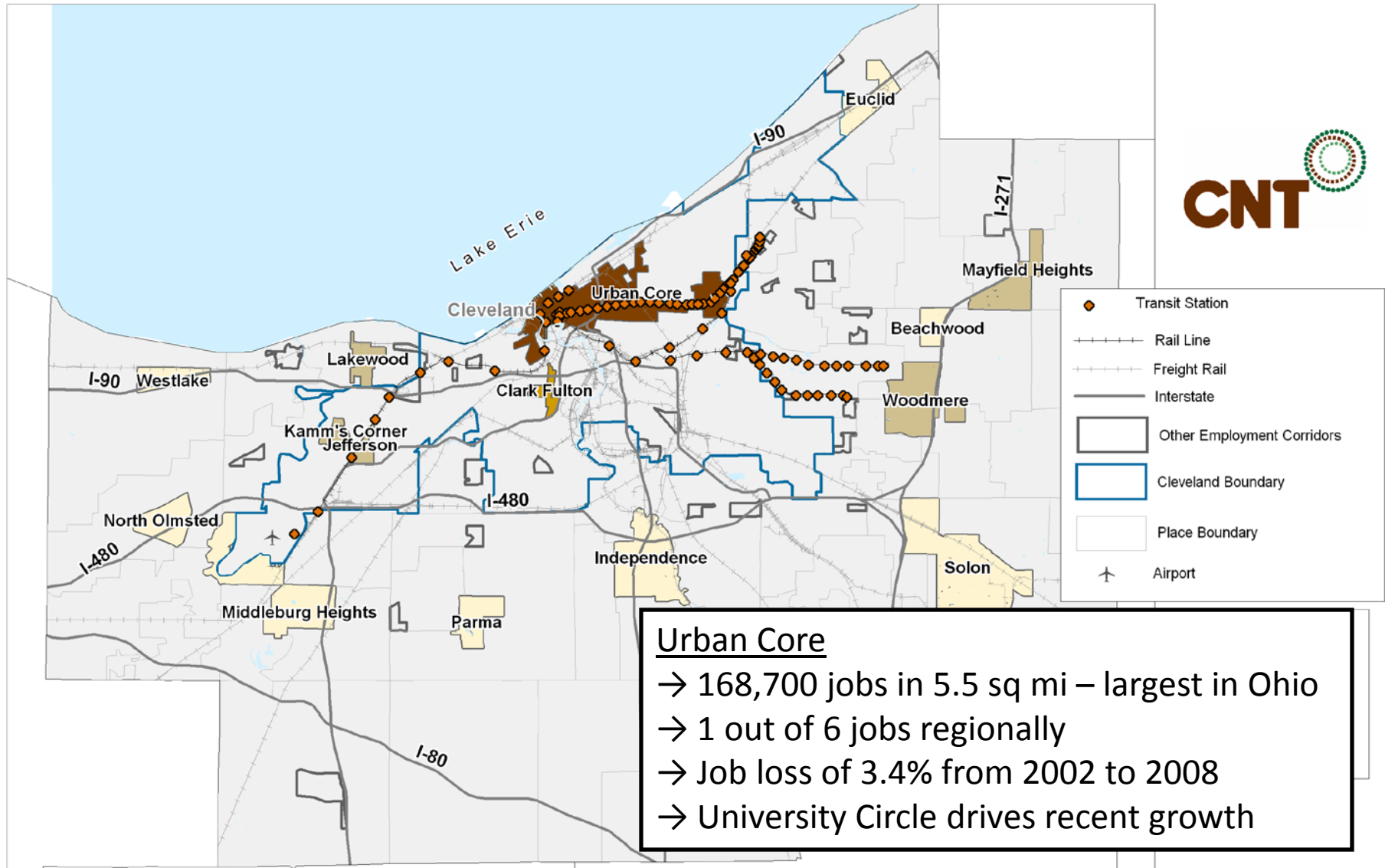
Euclid Avenue in Cleveland

Method: Analyzing the Job Centers

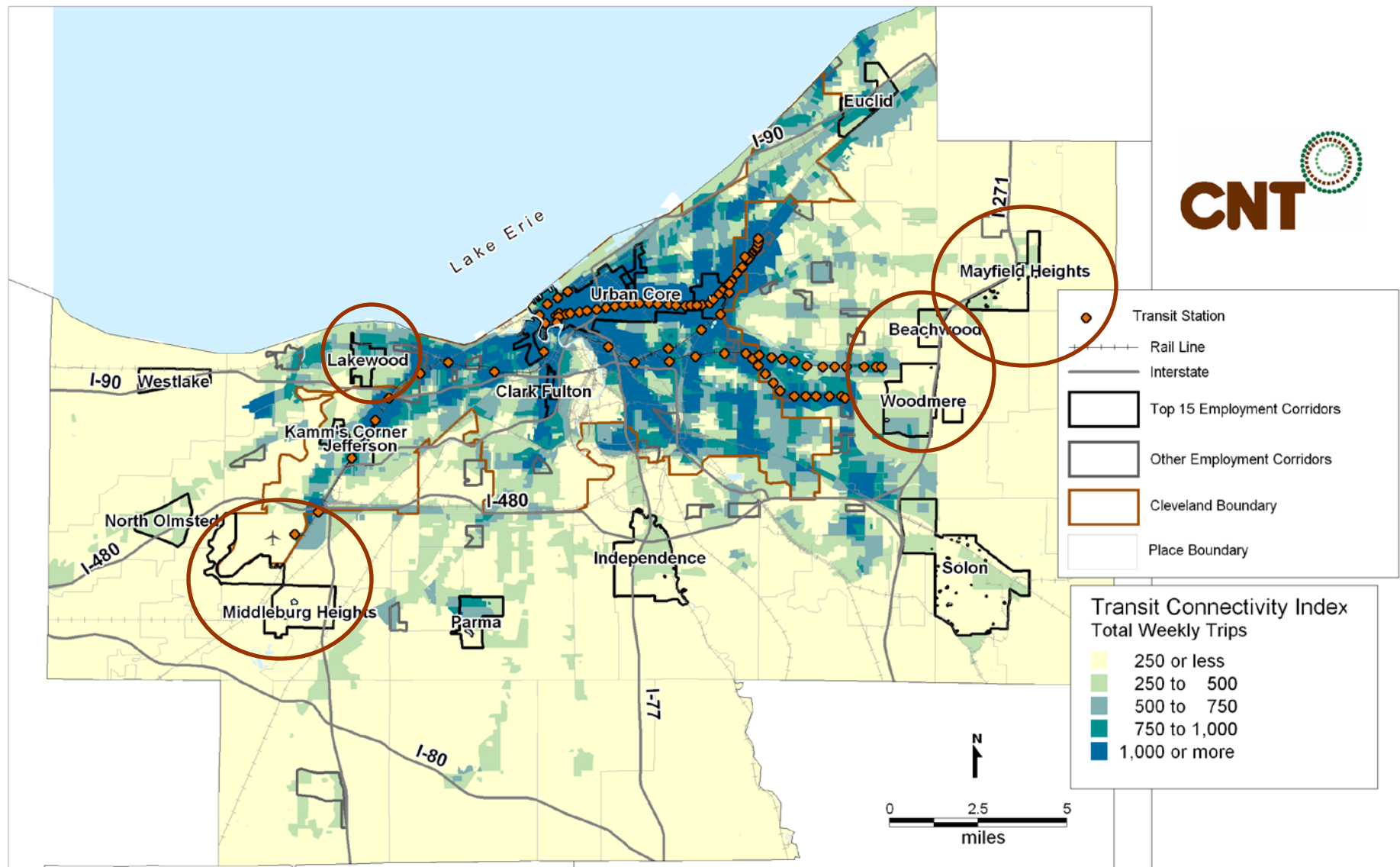
Using the 2008 job center boundaries, we determined...

- Rate of Growth: Rate of change in total jobs between 2002 and 2008 (WAC)
- Job Density: Jobs per square mile
- Transit Service: Overlaid job centers with transit service & frequency (TCI)
- Spatial Mismatch: # of residents who work where they live (Origin/Destination, 2008)
- Commute Shed: Visual representation of place of origin (Origin/Destination, 2008)

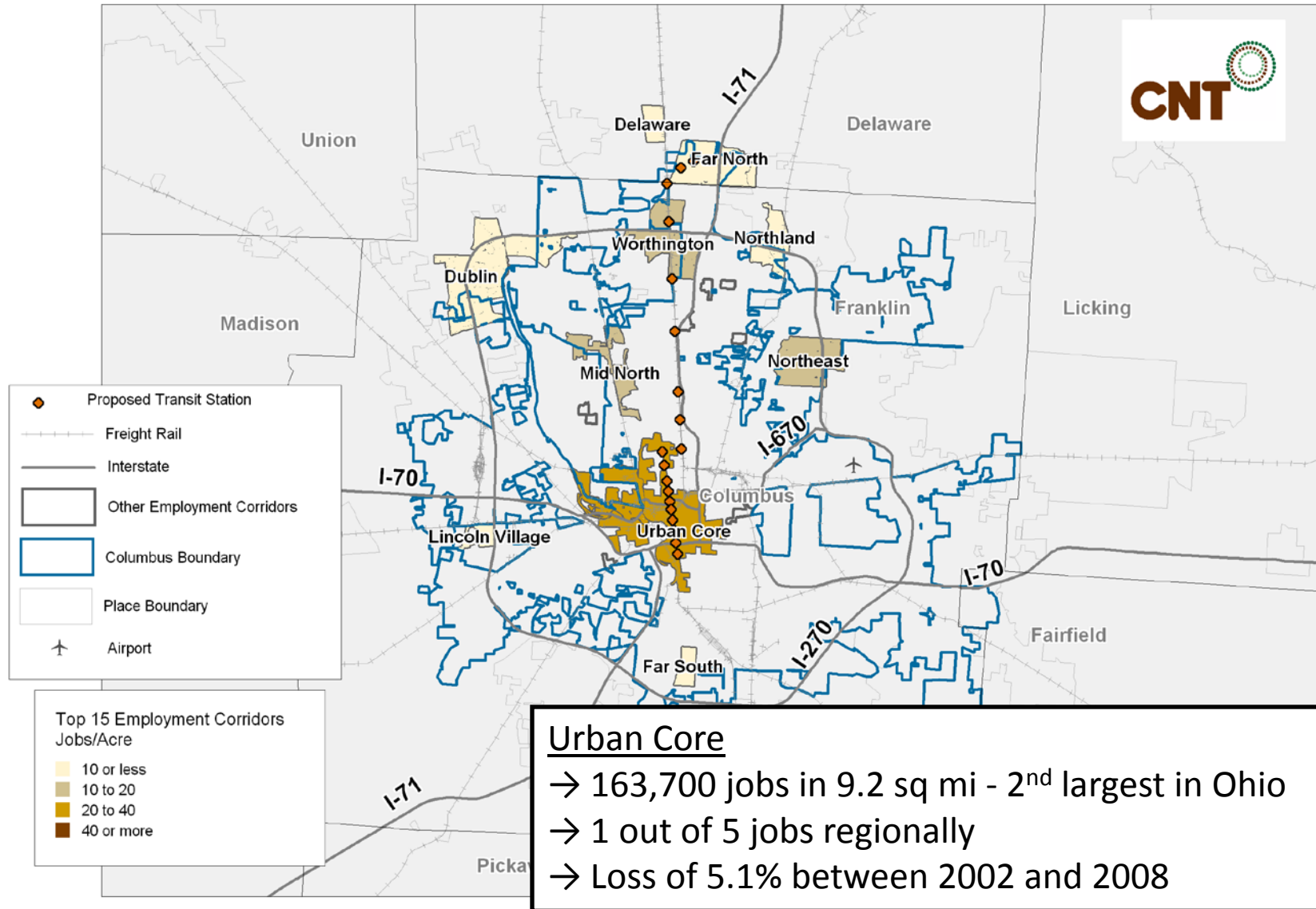
Downtown, Eds, and Meds Form Cleveland's Spine...



...and Transit Serves Some Centers But Not Others

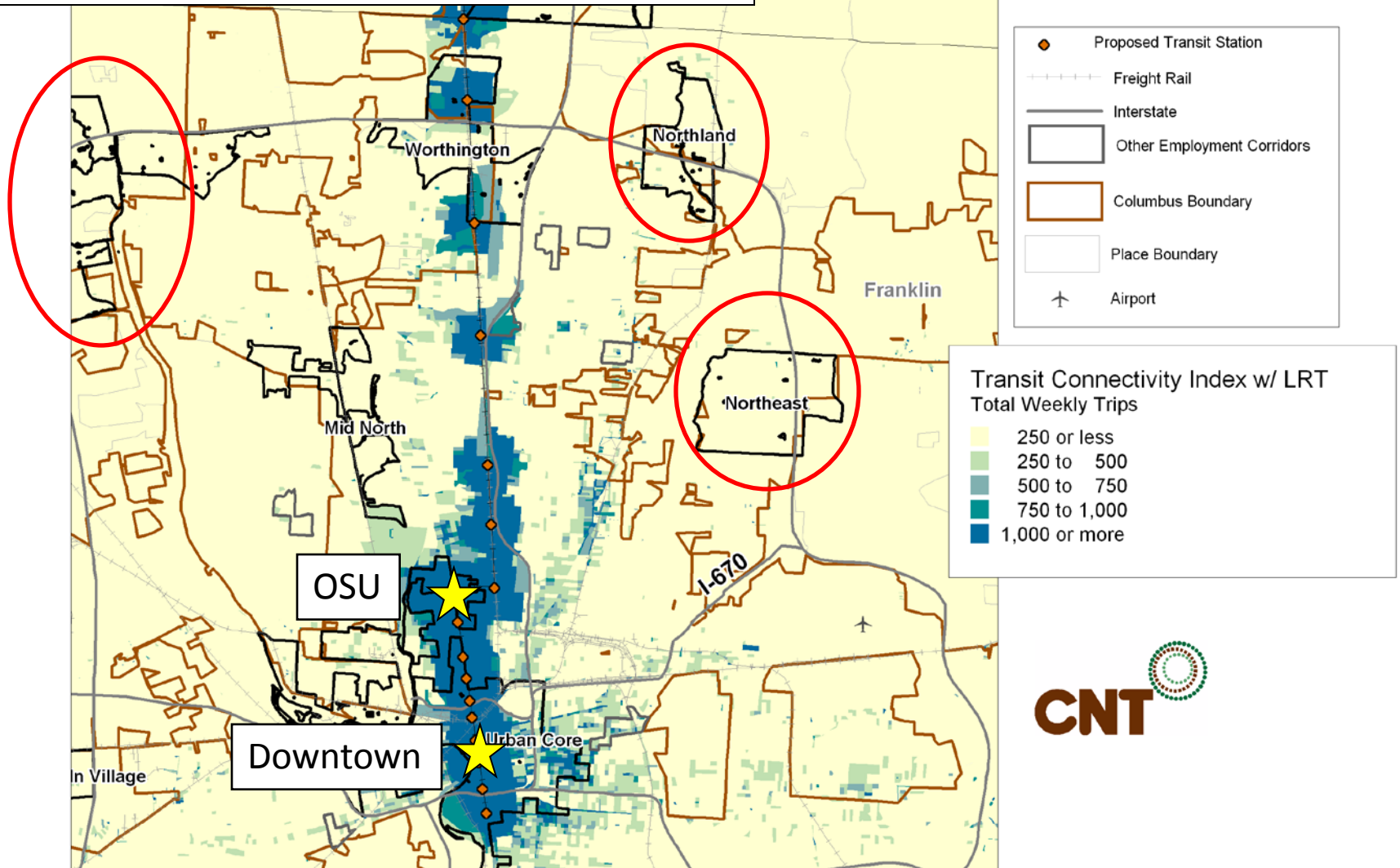


Same Pattern with Services, Eds and Meds in Columbus...



...With A Proposed Alignment Serving The Spine...

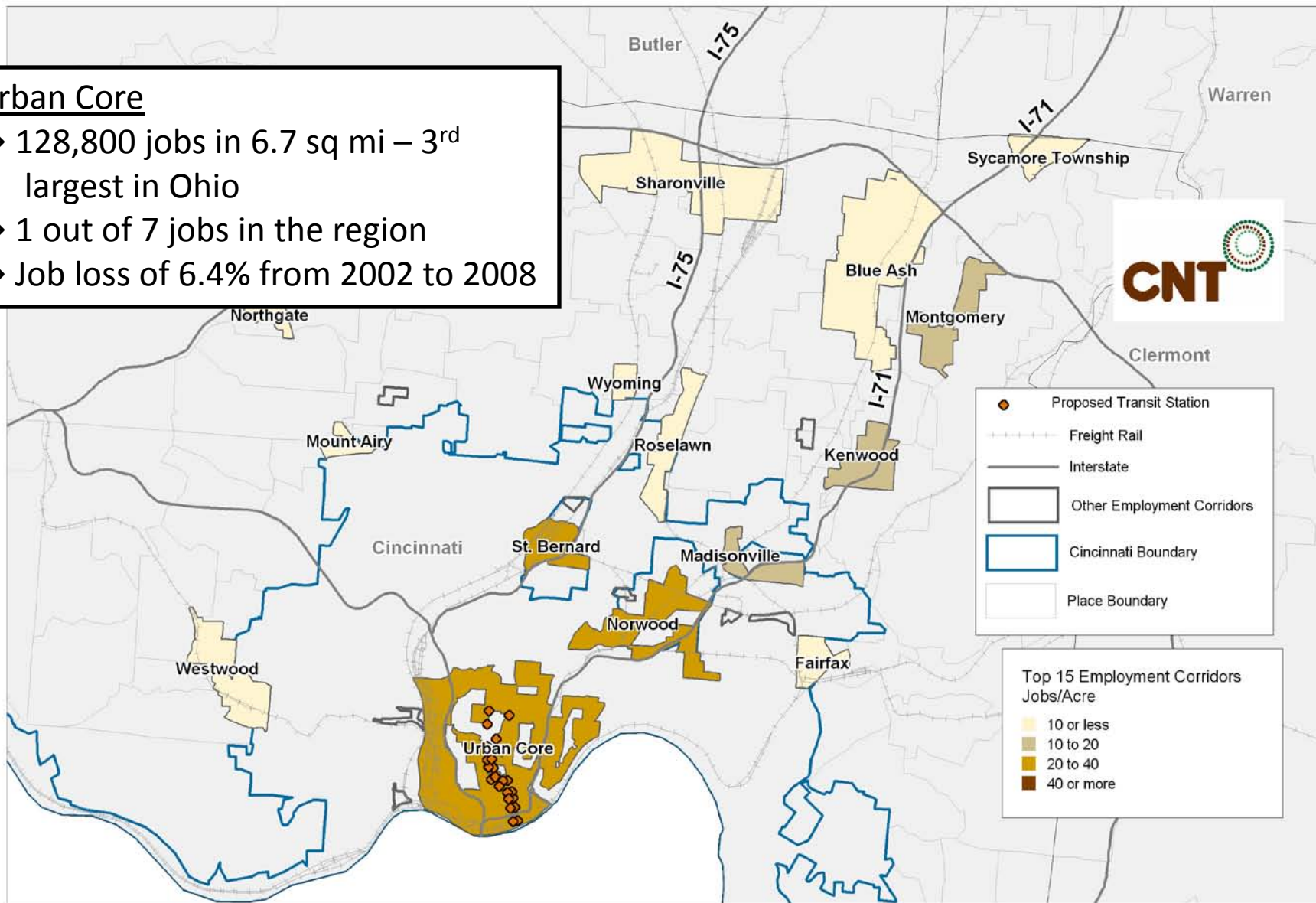
...But Not Suburban Centers



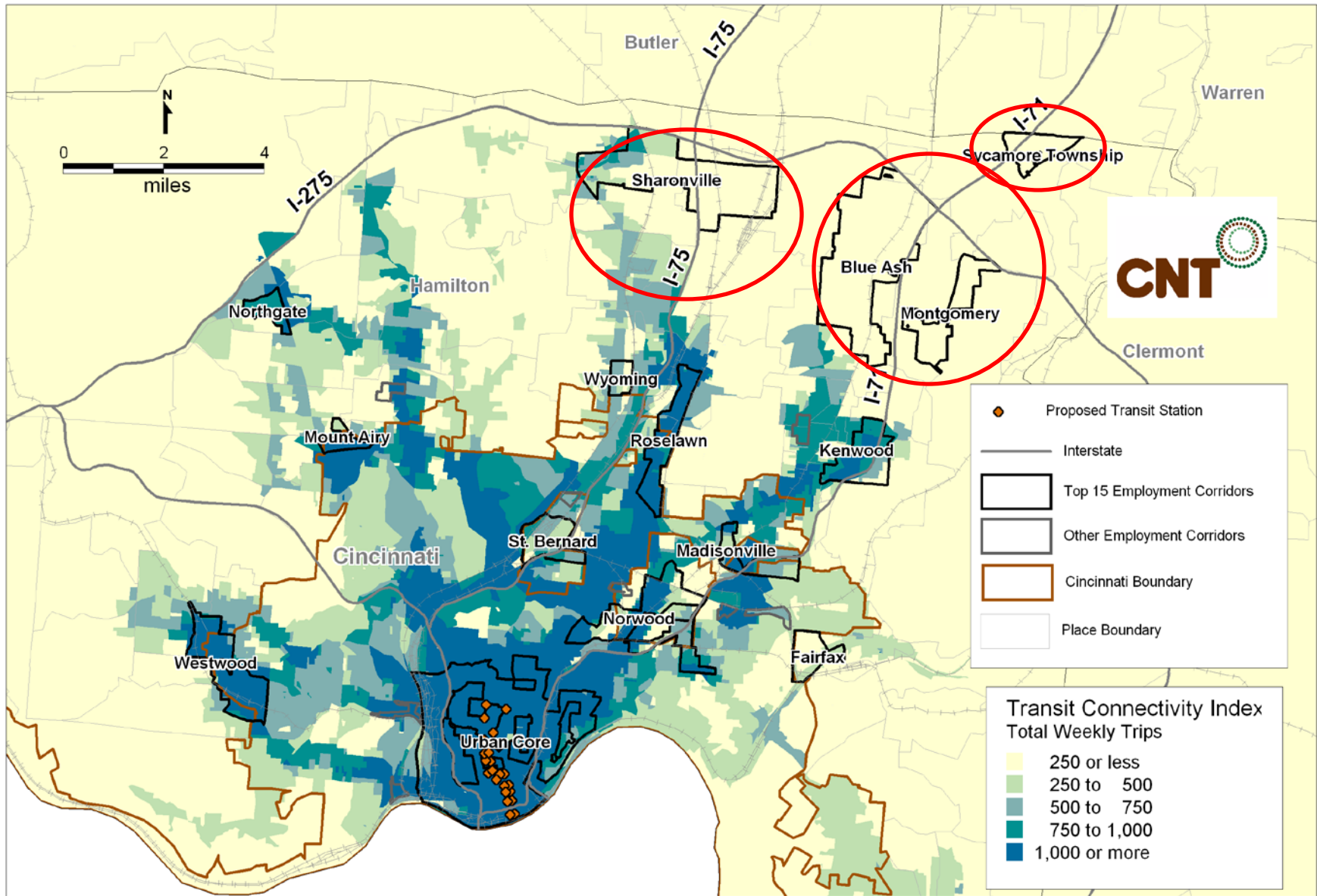
Same Pattern in Downtown/Uptown in Cincinnati...

Urban Core

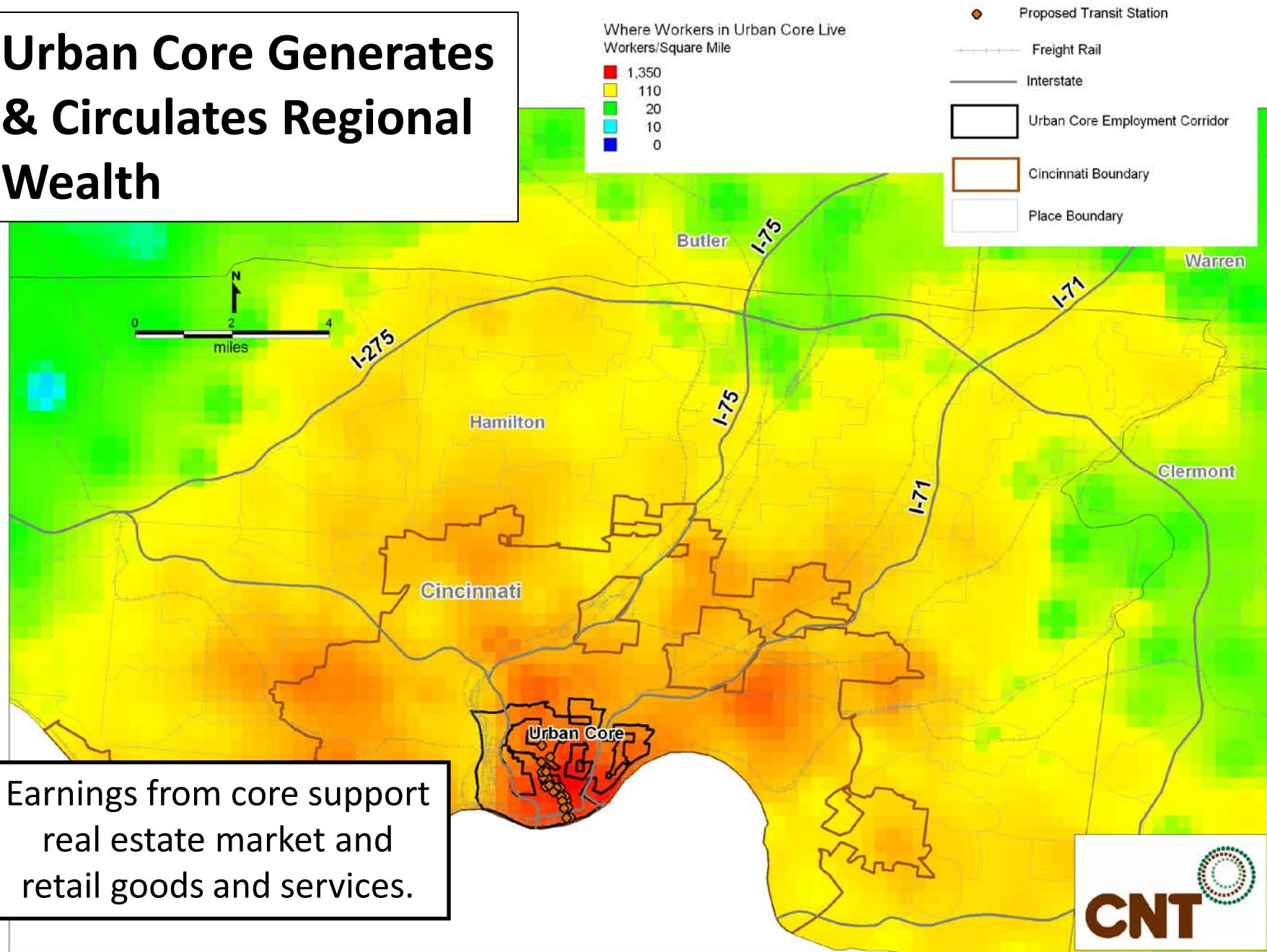
- 128,800 jobs in 6.7 sq mi – 3rd largest in Ohio
- 1 out of 7 jobs in the region
- Job loss of 6.4% from 2002 to 2008



...With Few Transit Connections to Suburban Centers



Urban Core Generates & Circulates Regional Wealth



Conclusions

Even after job sprawl, urban centers drive the economy:

- **461,214 jobs in 3 cores – 1 of 10 statewide**
- **Economic linkages cross municipal and county lines**
- **An existing or planned transit route serves the “spine” of all 3 corridors**

Almost 1 million jobs located in urban and suburban centers, but transit service is inconsistent

Outcome: Regional Roundtable Response

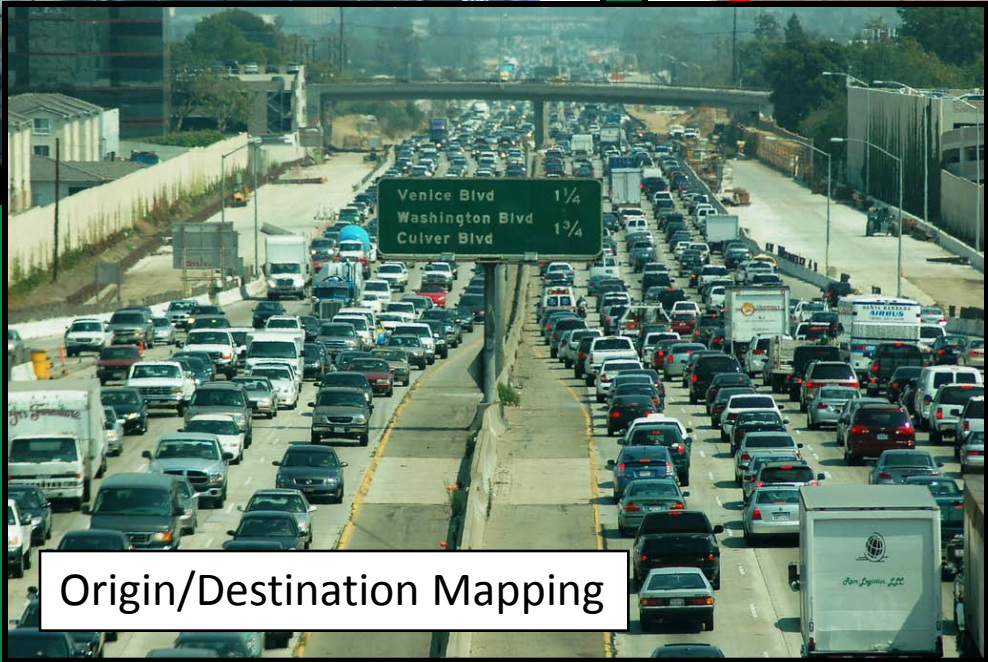


Benefits of Using LED

Reflects Recent Economy



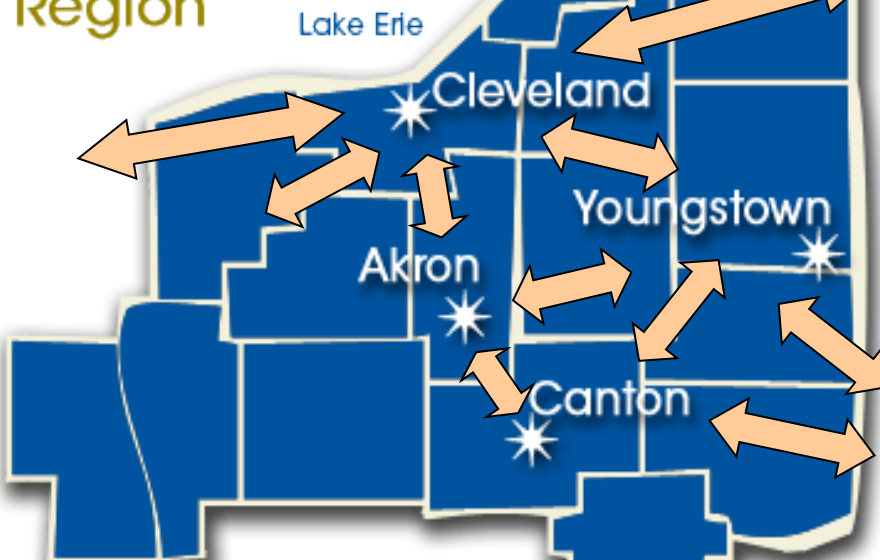
Public Good



Origin/Destination Mapping

Future Uses for LED: Transportation Planning

16-County Cleveland+ Region



Interregional Transportation Planning

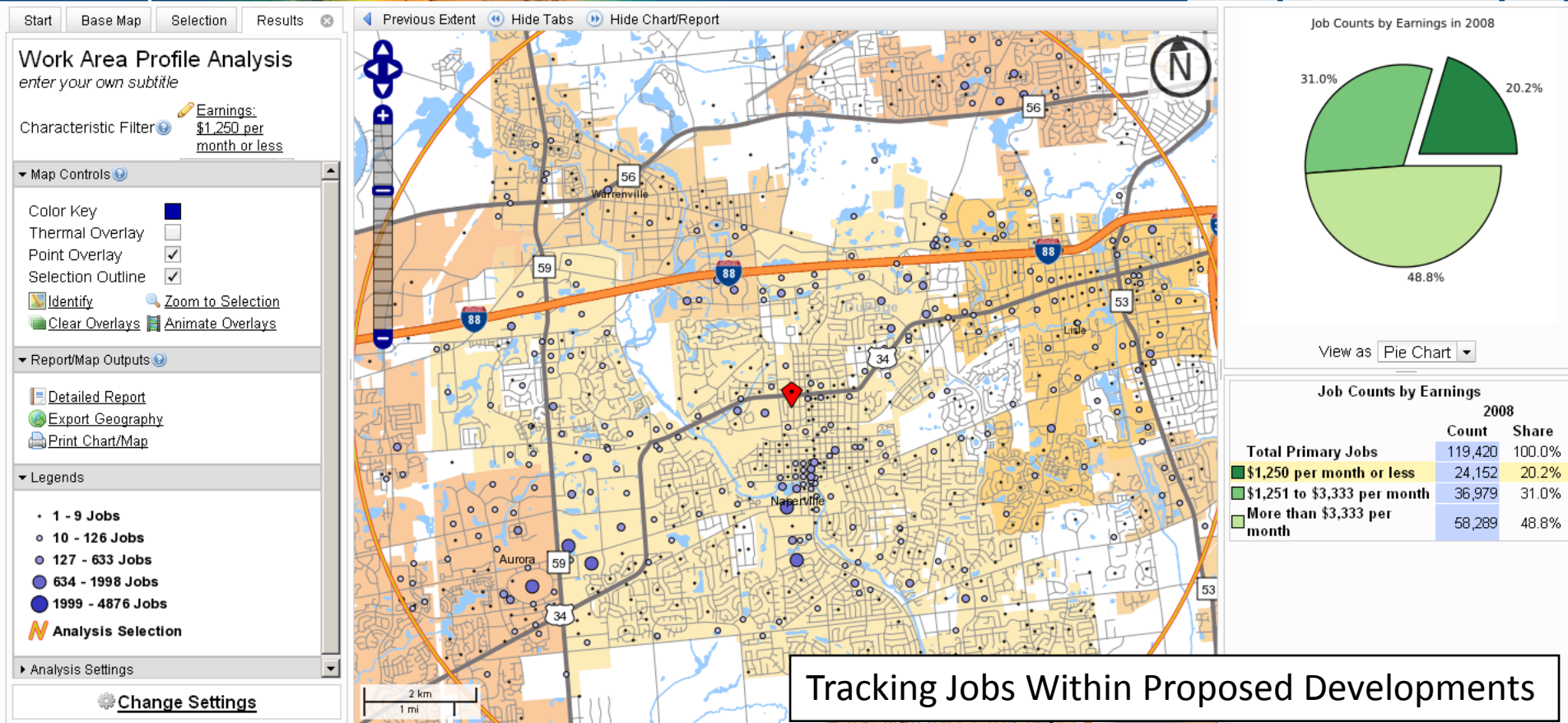


Adjusting Parking Policies

Future Uses for LED: Affordable Housing Development

OnTheMap

[LED Home](#) [Help](#) and [Documentation](#) [Reload](#)



Thank you!

Kyle Smith

Economic Development Analyst & Planner

773.269.4036

ksmith@cnt.org