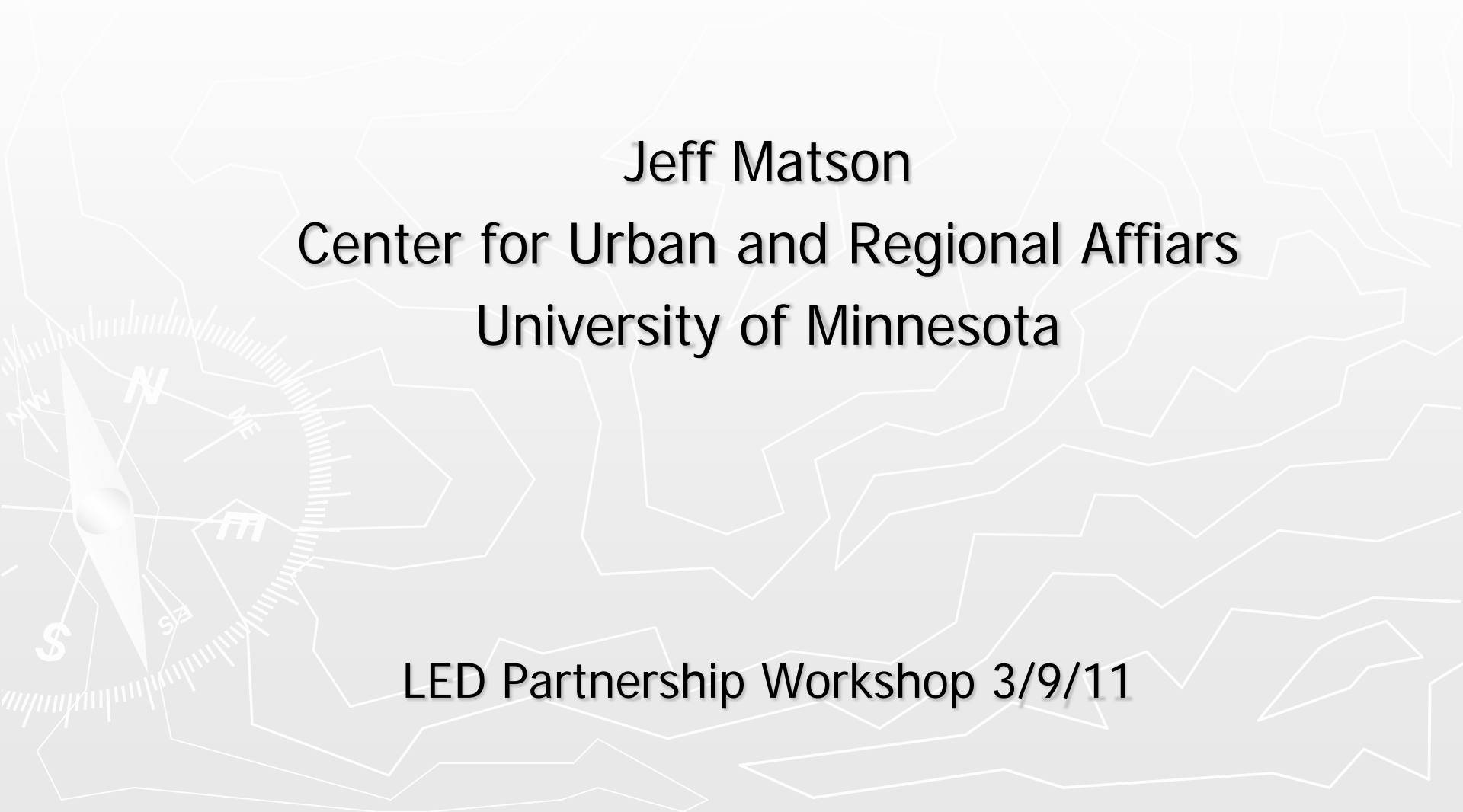


Making the Case for Transit

Jeff Matson

Center for Urban and Regional Affairs
University of Minnesota

LED Partnership Workshop 3/9/11

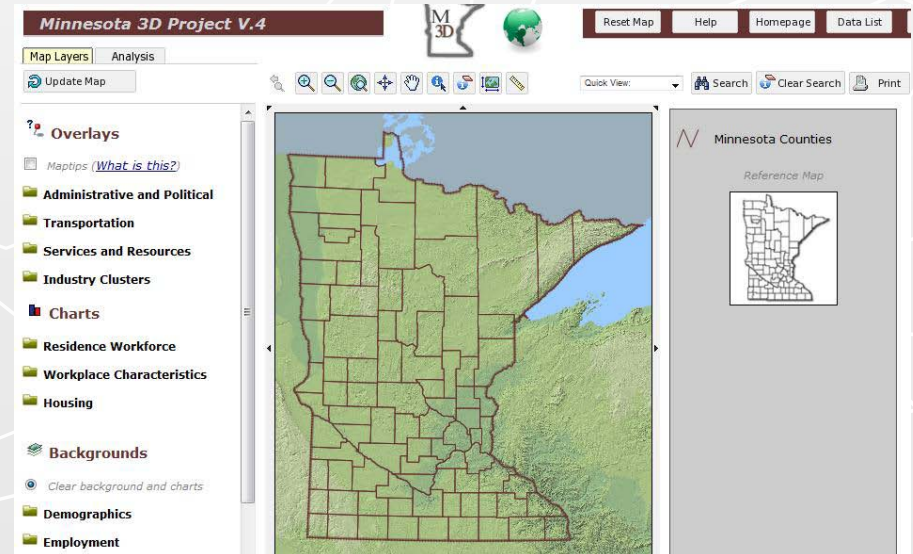
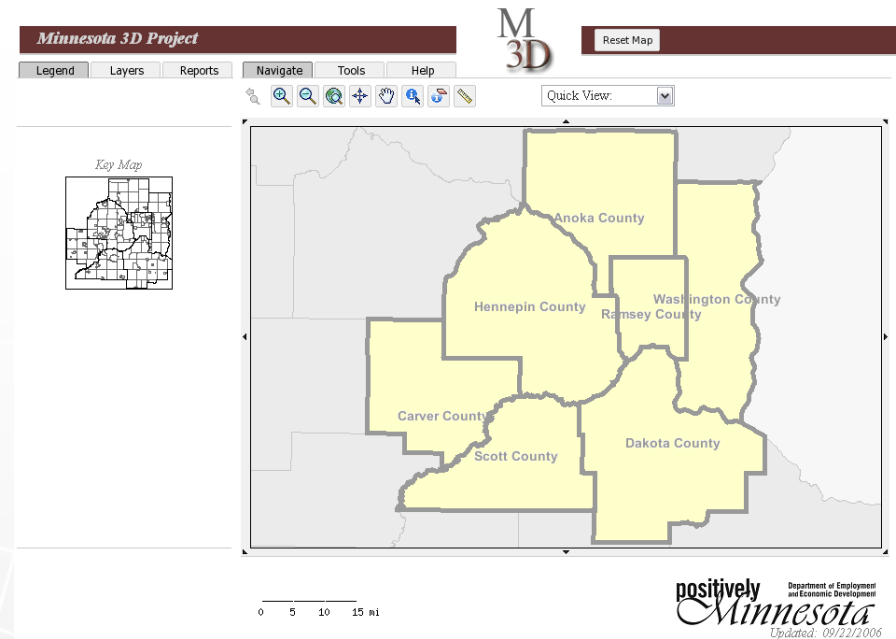


Outline

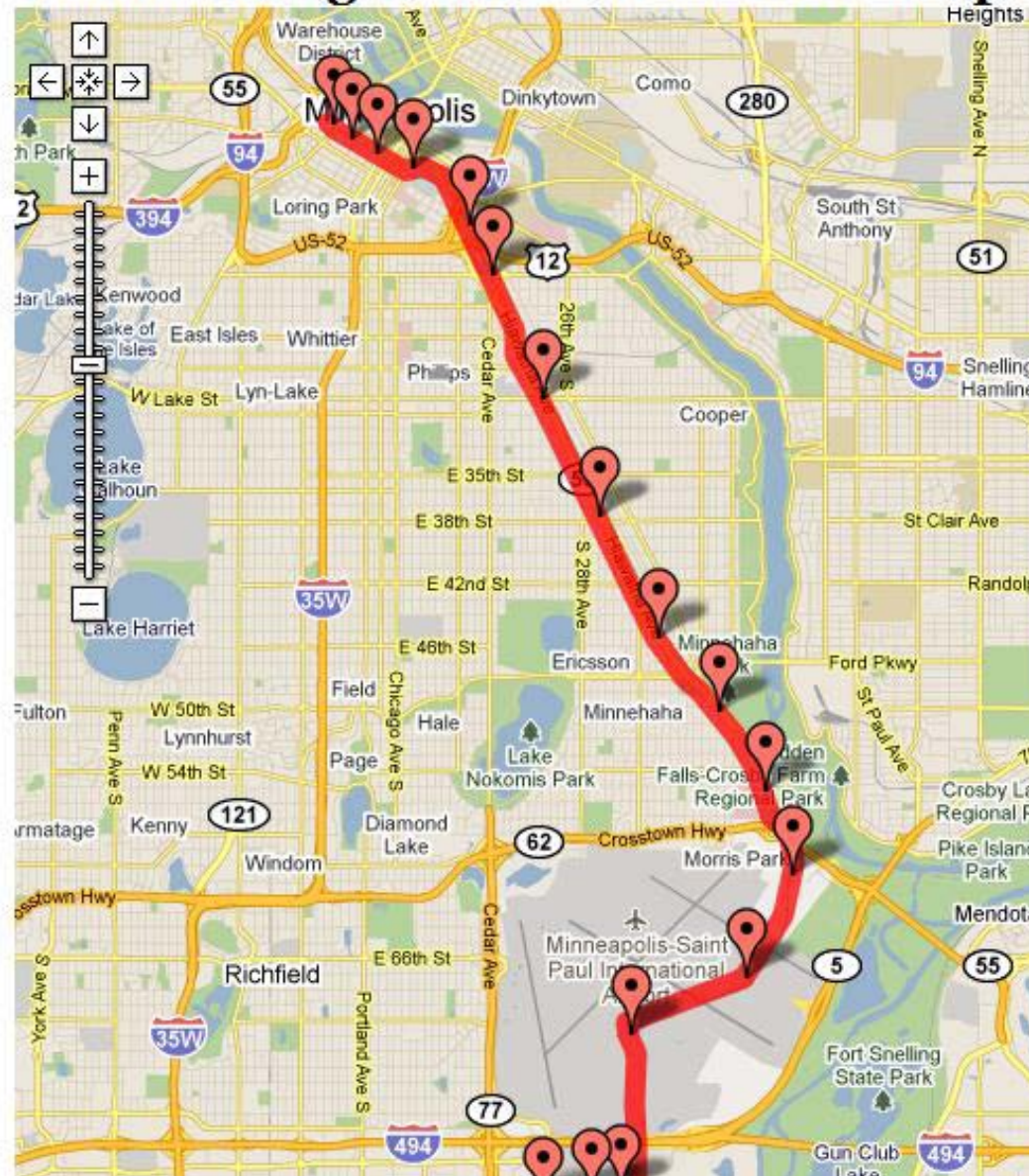
- ▶ Introduction
- ▶ Three-part Study on Commutesheds and Access to Jobs
 - Existing LRT Station Areas
 - Non-LRT Corridors
 - Potential for Future Corridor
- ▶ Other Data
- ▶ Future Research

CURA

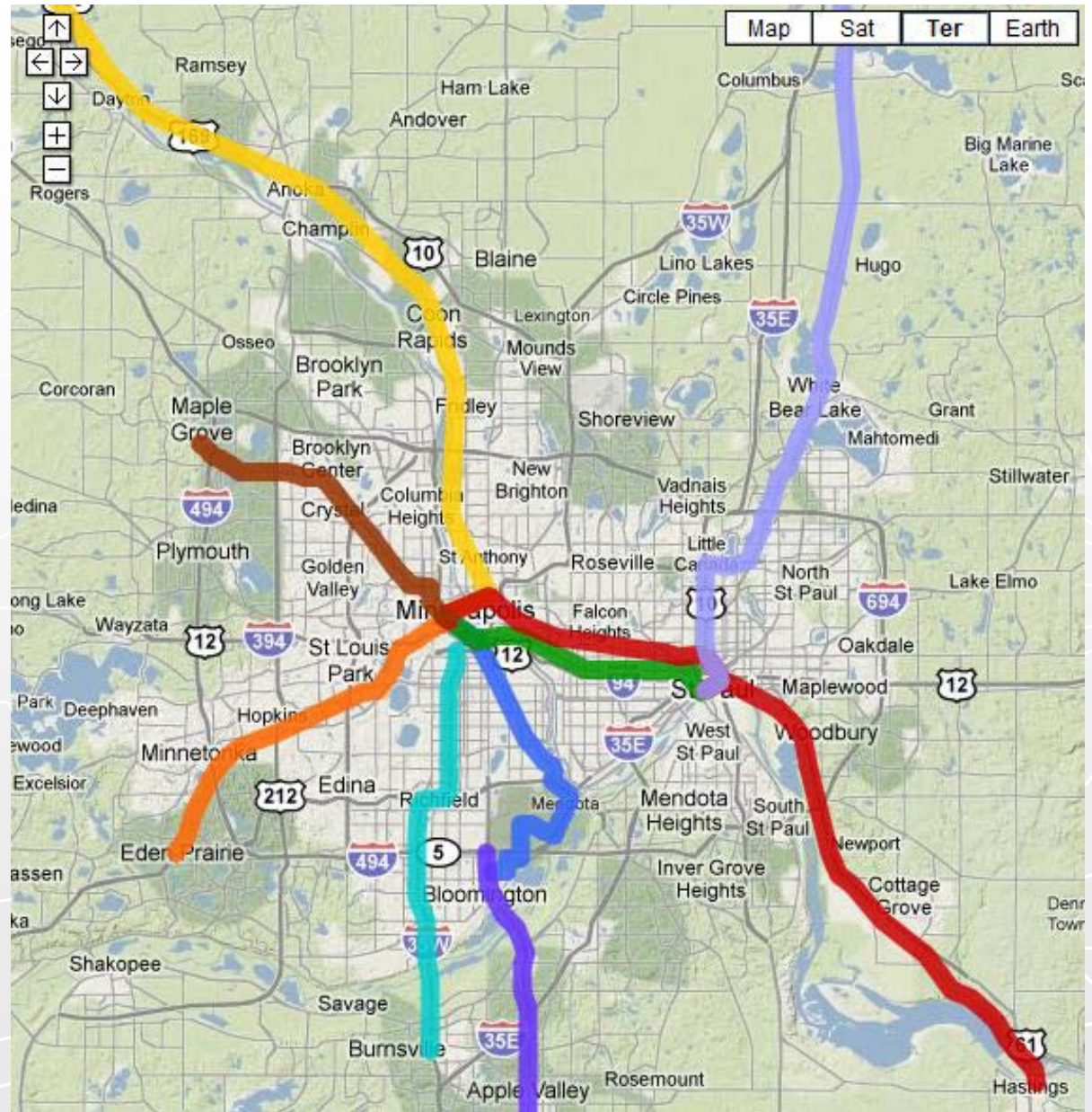
- ▶ All University Research Department
- ▶ Community Engagement
- ▶ Technical Assistance
- ▶ Using LED since 2005



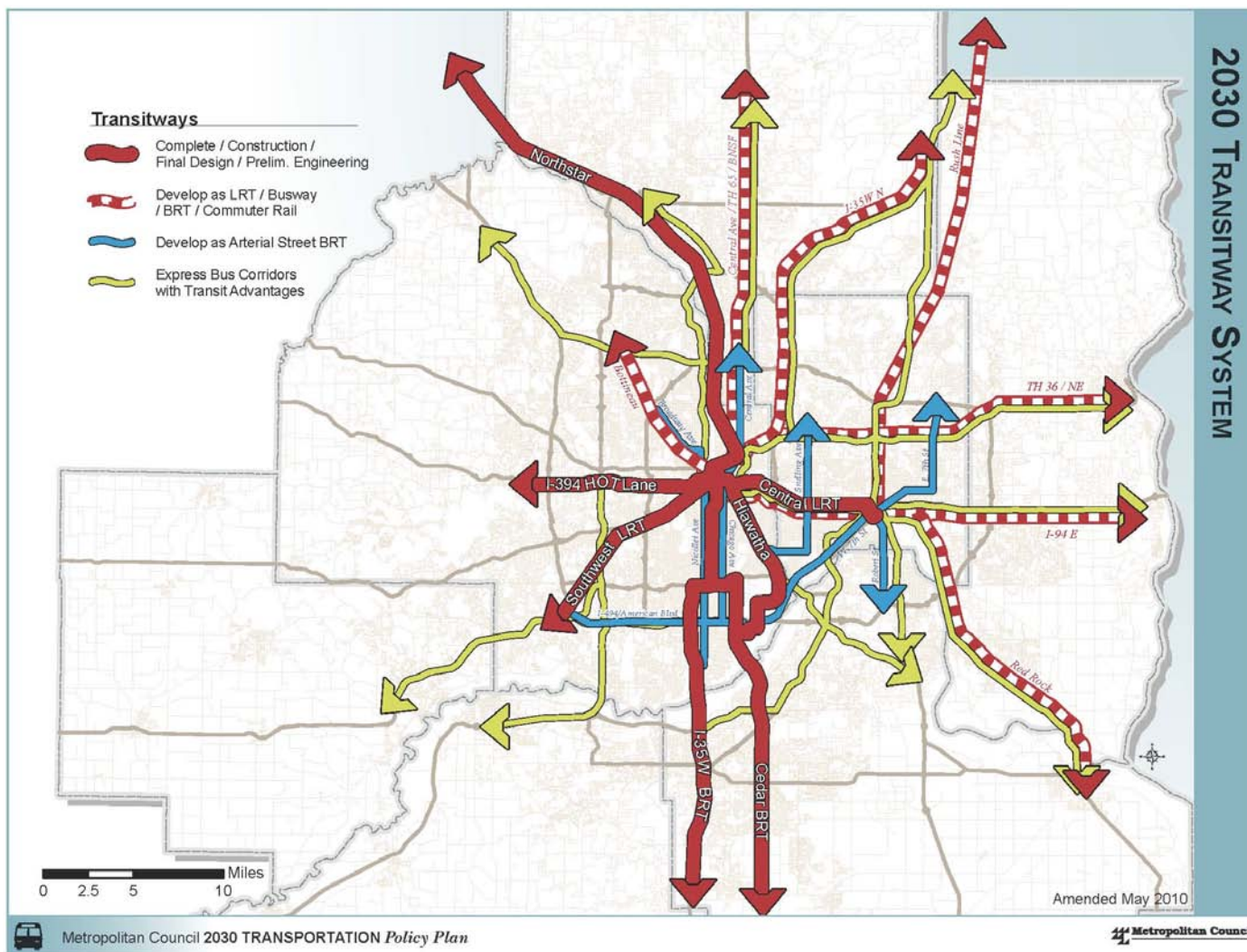
Hiawatha Light Rail Transit route map



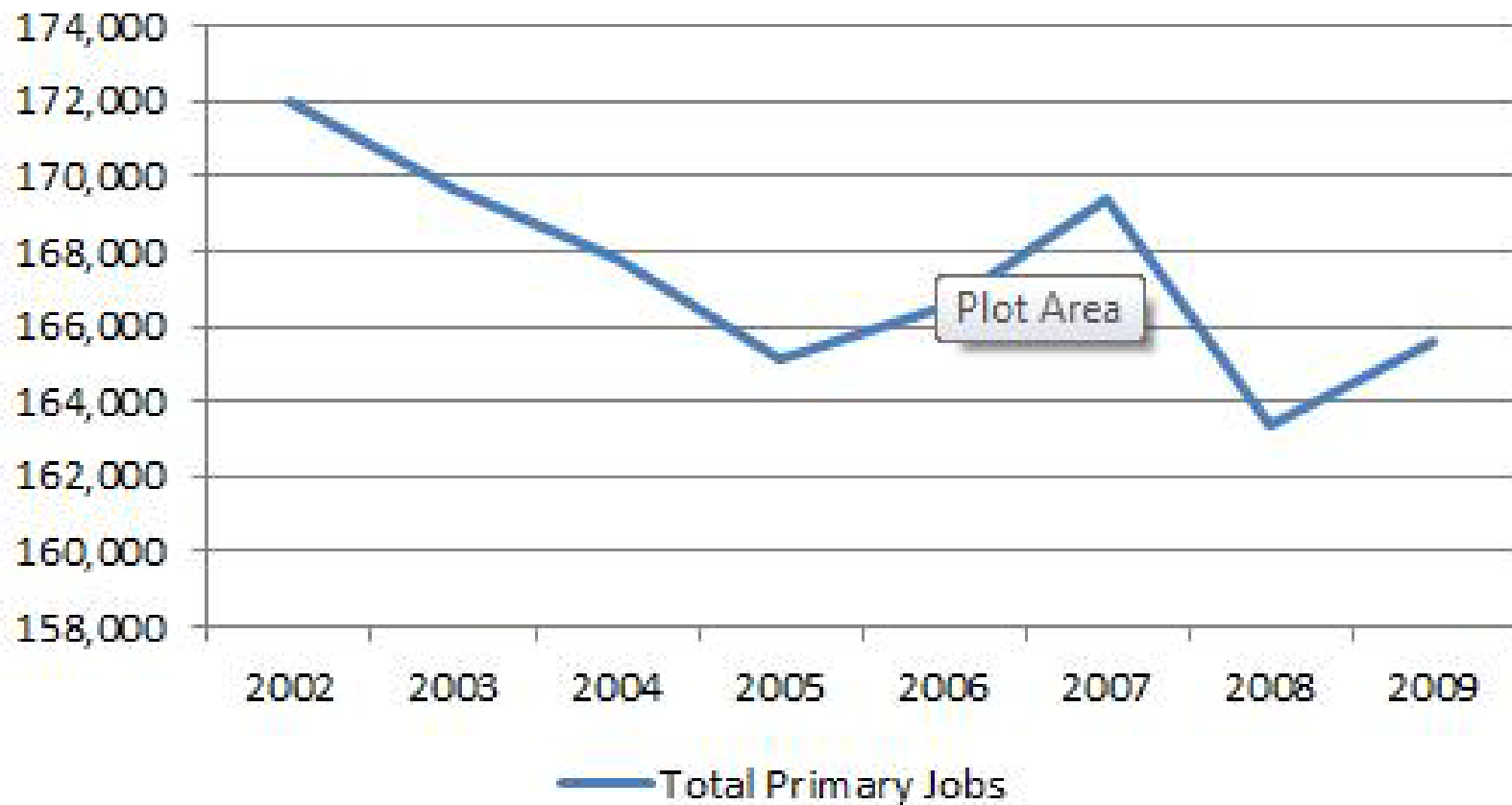
2030 Transit Plan



2030 Transit Plan

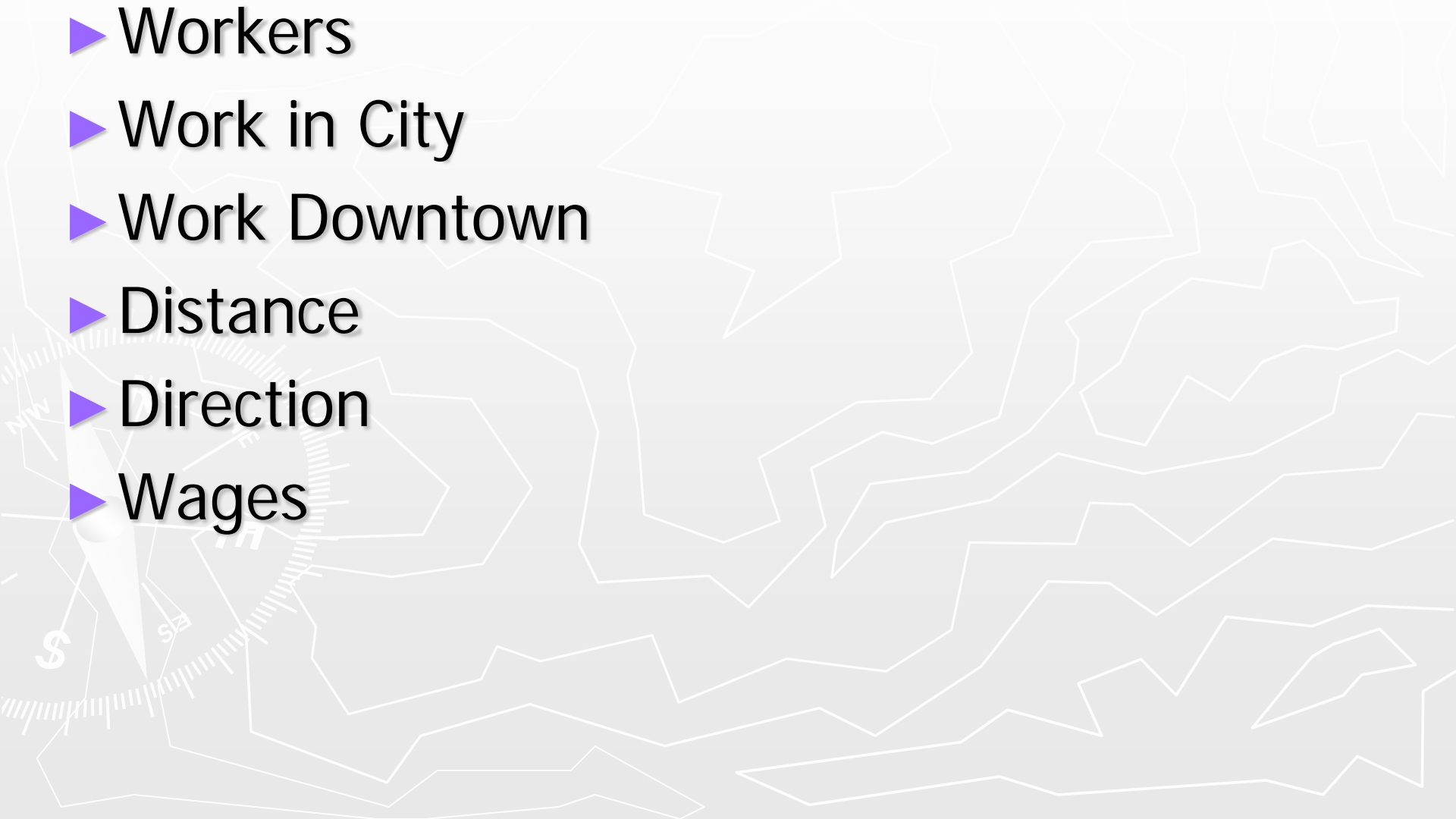


Minneapolis: Total Employed Residents



LRT Commuteshed / RAC

- ▶ Workers
- ▶ Work in City
- ▶ Work Downtown
- ▶ Distance
- ▶ Direction
- ▶ Wages



OnTheMap - Mozilla Firefox

File Edit View History Bookmarks Tools Help

http://ehdmap4.did.census.gov/thermap4/index.html?search=Search All Names&searchvalue=

Most Visited Getting Started Latest Headlines florida_jobs_report_ja... Google Calendar U.S. Census Bureau OnTheMap showPDF.py (appli... Take 10 Map - 201... OTM4_Workshop_...

U.S. Census Bureau LED OnTheMap

Load Hide Show Tools Print Map Link To Map Previous Next Close Overlay

Back Study Area Selection Next

Use the following tools to import a shape as your selection.

Click the shapes on the map to select and unselect them or use as your selection.

Zoom to Imported Shapes

Clear Selection

Select All Polygons

Select All Lines

Select All Points

Cancel

Continue with Selected Shapes

Clear Selection

Add Layer Selection

Block Groups

Add Buffer to Selection

Simple Ring

Radius

Draw

Inner Radius

Outer Radius

Phone (Line Test only)

Start Radius

End Radius

5 km

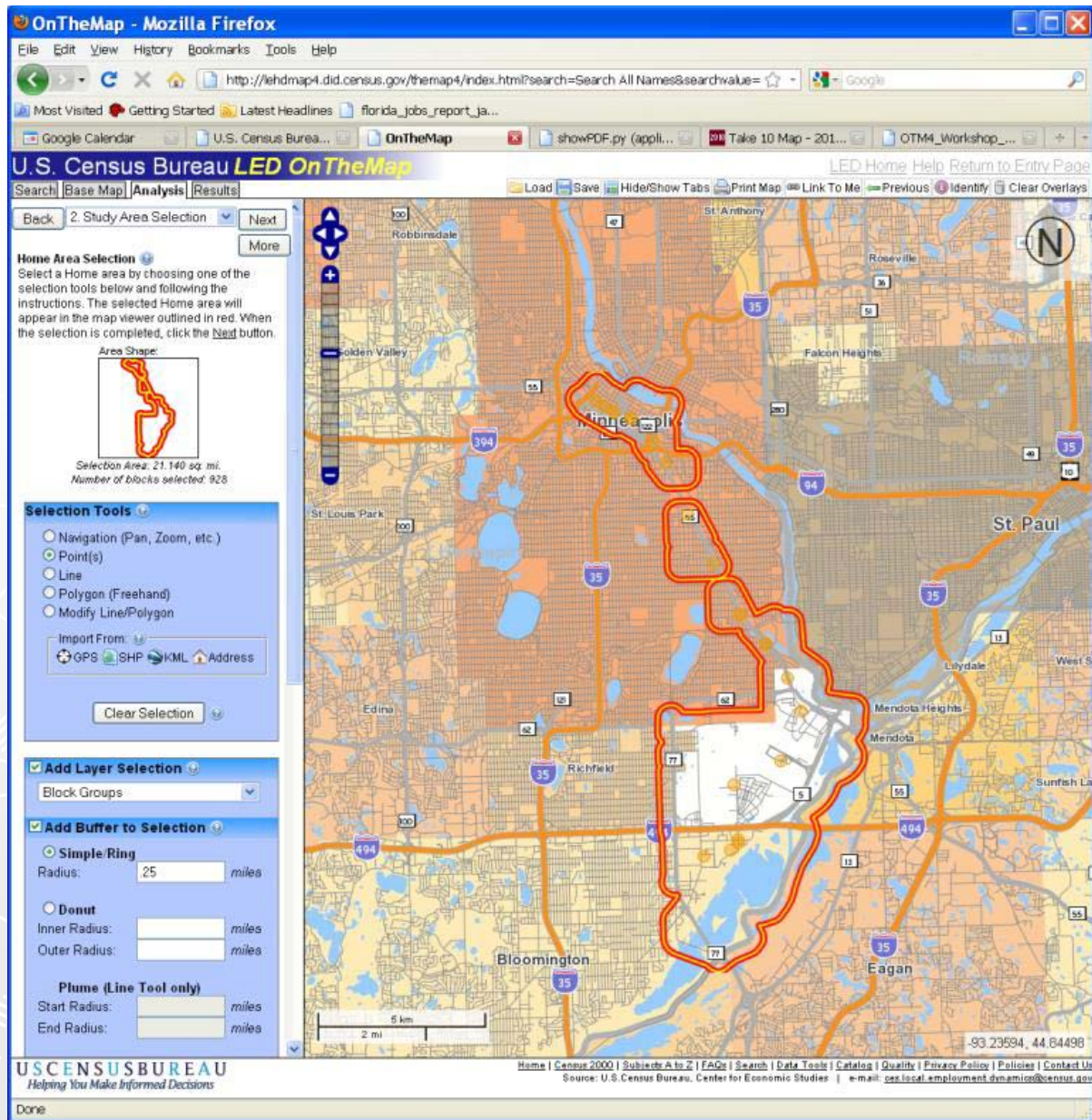
2 mi

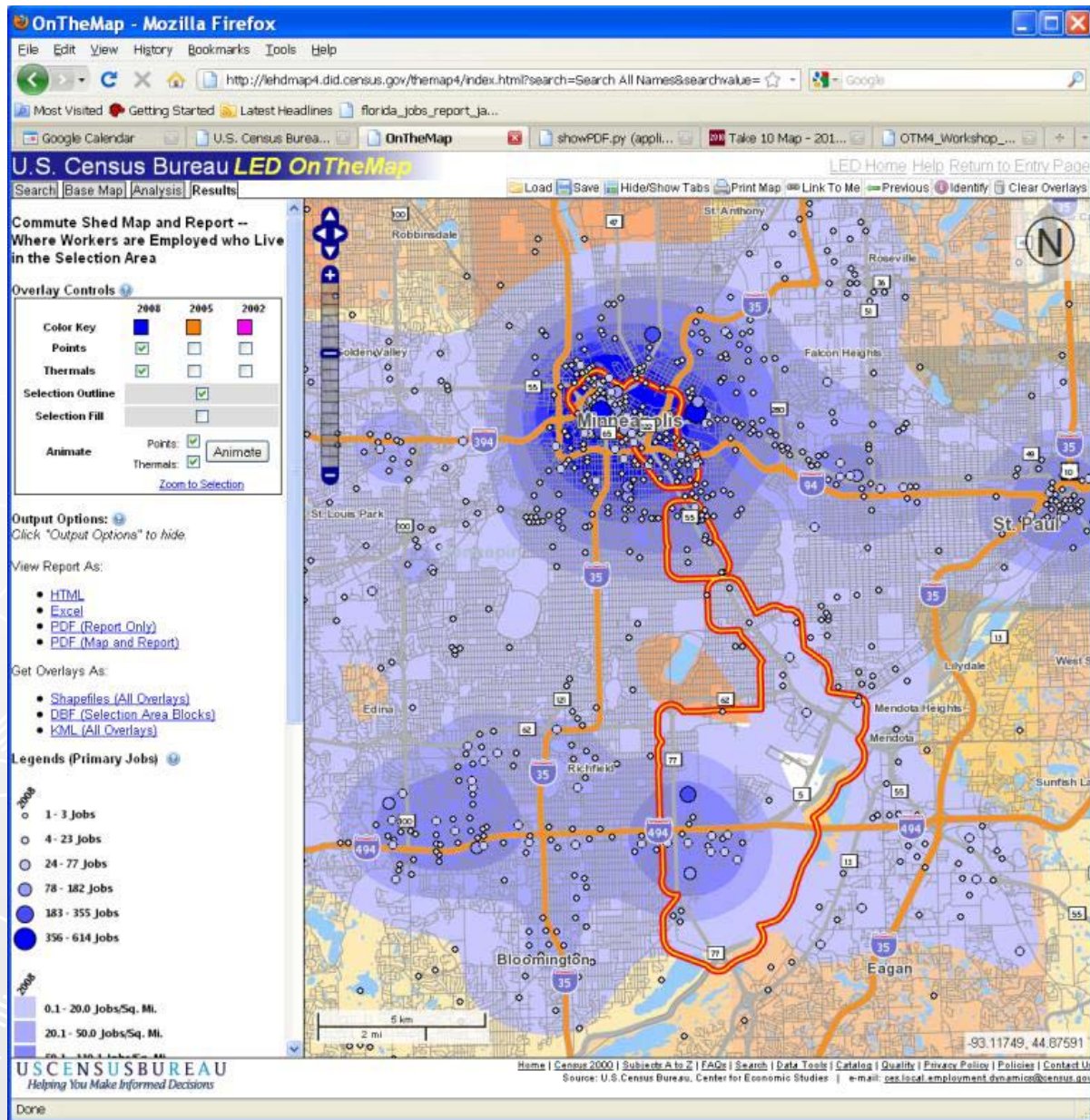
-93.36816, 44.91918

U.S. CENSUS BUREAU

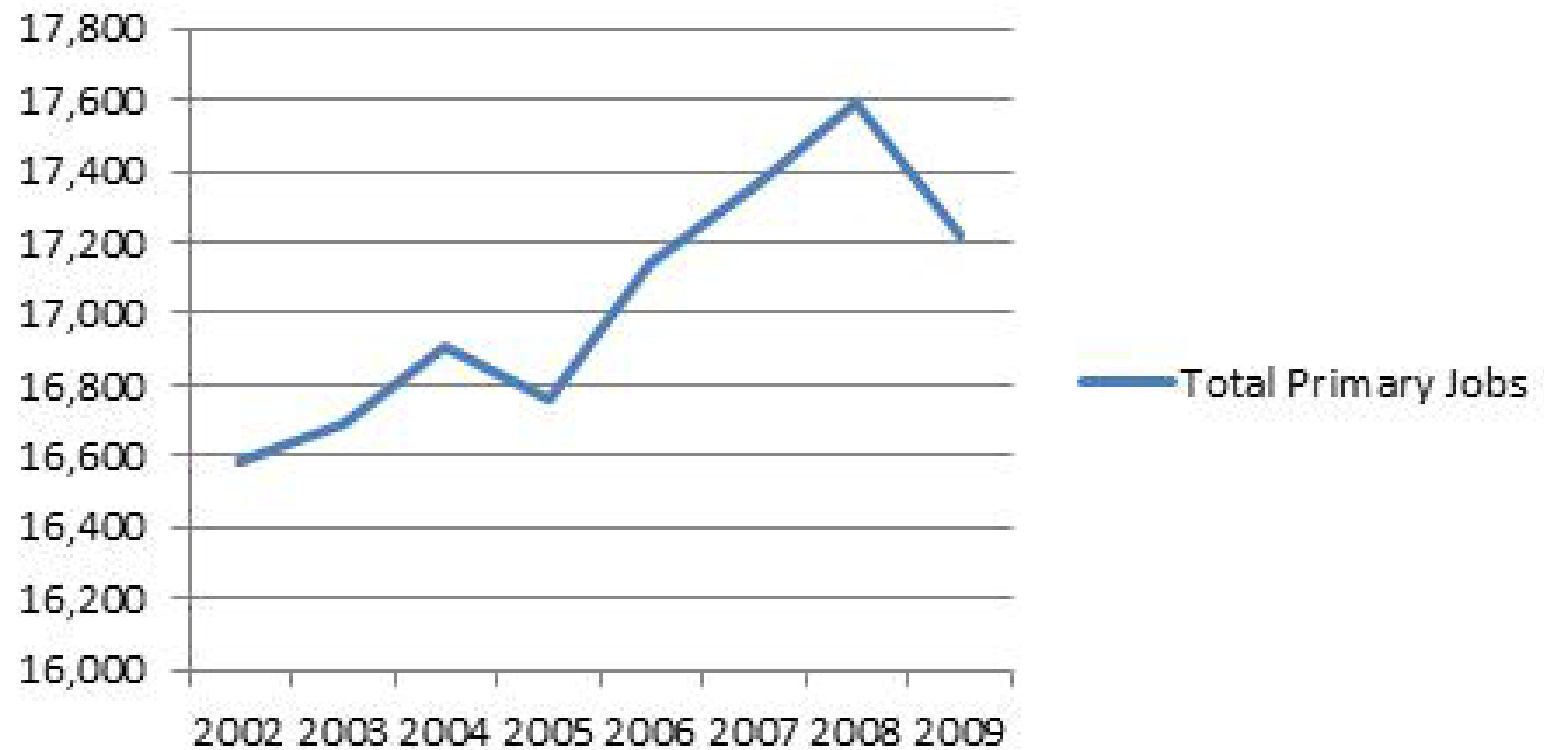
Design: Tom Harkin Information Services

Done

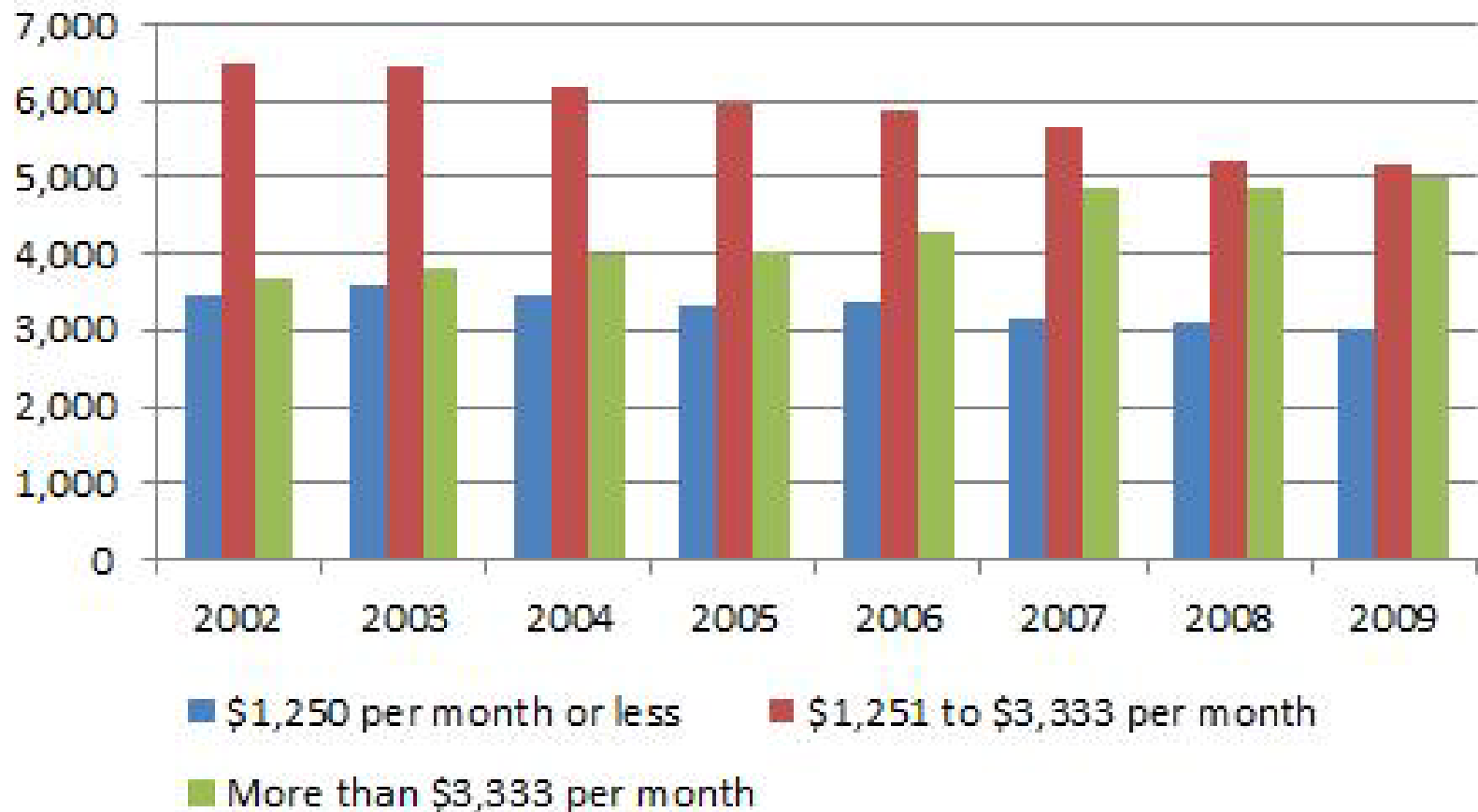




Total Primary Jobs



Primary Jobs by Monthly Earnings



<u>Total Primary Jobs</u>						
Total Primary Jobs	2008		2005		2002	
	Count	Share	Count	Share	Count	Share
Total Primary Jobs	20,395	100.0%	19,880	100.0%	19,978	100.0%

<u>Jobs in Places (Cities, CDPs, etc.) Where Workers are Employed</u>						
	2008		2005		2002	
	Count	Share	Count	Share	Count	Share
Minneapolis city, MN	8,705	42.7%	8,001	40.2%	7,723	38.7%
St. Paul city, MN	1,982	9.7%	1,892	9.5%	1,864	9.3%
Bloomington city, MN	1,685	8.3%	1,736	8.7%	2,087	10.4%
Edina city, MN	874	4.3%	955	4.8%	1,001	5.0%
Minnetonka city, MN	581	2.8%	464	2.3%	411	2.1%
St. Louis Park city, MN	468	2.3%	527	2.7%	525	2.6%
Eden Prairie city, MN	463	2.3%	443	2.2%	525	2.6%
Eagan city, MN	460	2.3%	291	1.5%	380	1.9%
Plymouth city, MN	347	1.7%	324	1.6%	358	1.8%
Golden Valley city, MN	295	1.4%	258	1.3%	300	1.5%
All Other Locations	4,535	22.2%	4,989	25.1%	4,804	24.0%

<u>Jobs in Counties Where Workers are Employed</u>						
	2008		2005		2002	
	Count	Share	Count	Share	Count	Share
Hennepin County, MN	14,768	72.4%	14,455	72.7%	14,329	71.7%
Ramsey County, MN	2,879	14.1%	2,672	13.4%	2,754	13.8%
Dakota County, MN	1,072	5.3%	958	4.8%	1,042	5.2%
Anoka County, MN	398	2.0%	414	2.1%	460	2.3%
Scott County, MN	177	0.9%	189	1.0%	196	1.0%
Carver County, MN	130	0.6%	123	0.6%	167	0.8%
Washington County, MN	128	0.6%	143	0.7%	140	0.7%
Steele County, MN	100	0.5%	136	0.7%	106	0.5%
St. Louis County, MN	97	0.5%	164	0.8%	212	1.1%
Blue Earth County, MN	65	0.3%	207	1.0%	84	0.4%
All Other Locations	581	2.8%	419	2.1%	488	2.4%

<u>Jobs in ZIP Codes (ZCTA) Where Workers are Employed</u>						
	2008		2005		2002	
	Count	Share	Count	Share	Count	Share

Jobs in Counties Where Workers are Employed

	2008		2005		2002	
	Count	Share	Count	Share	Count	Share
Hennepin County, MN	14,768	72.4%	14,455	72.7%	14,329	71.7%
Ramsey County, MN	2,879	14.1%	2,672	13.4%	2,754	13.8%
Dakota County, MN	1,072	5.3%	958	4.8%	1,042	5.2%
Anoka County, MN	398	2.0%	414	2.1%	460	2.3%
Scott County, MN	177	0.9%	189	1.0%	196	1.0%
Carver County, MN	130	0.6%	123	0.6%	167	0.8%
Washington County, MN	128	0.6%	143	0.7%	140	0.7%
Steele County, MN	100	0.5%	136	0.7%	106	0.5%
St. Louis County, MN	97	0.5%	164	0.8%	212	1.1%
Blue Earth County, MN	65	0.3%	207	1.0%	84	0.4%
All Other Locations	581	2.8%	419	2.1%	488	2.4%

Jobs in ZIP Codes (ZCTA) Where Workers are Employed

	2008		2005		2002	
	Count	Share	Count	Share	Count	Share
55402	2,348	11.5%	1,538	7.7%	1,696	8.5%
55425	738	3.6%	712	3.6%	836	4.2%
55401	734	3.6%	902	4.5%	594	3.0%
55455	708	3.5%	776	3.9%	634	3.2%
55403	695	3.4%	500	2.5%	449	2.2%
55404	640	3.1%	550	2.8%	620	3.1%
55413	544	2.7%	561	2.8%	609	3.0%
55415	521	2.6%	567	2.9%	397	2.0%
55406	480	2.4%	492	2.5%	570	2.9%
55435	468	2.3%	606	3.0%	679	3.4%
All Other Locations	12,519	61.4%	12,676	63.8%	12,894	64.5%

	Count	Share	Count	Share	Count	Share
Total Primary Jobs	20,395	100.0%	19,880	100.0%	19,978	100.0%

Jobs by Worker Age

	2008		2005		2002	
	Count	Share	Count	Share	Count	Share
Age 30 or younger	6,698	32.8%	6,425	32.3%	6,367	31.9%
Age 31 to 54	10,894	53.4%	10,842	54.5%	11,462	57.4%
Age 55 or older	2,803	13.7%	2,613	13.1%	2,149	10.8%

Jobs by Earnings Paid

	2008		2005		2002	
	Count	Share	Count	Share	Count	Share
\$1,250 per month or less	4,293	21.0%	4,826	24.3%	4,920	24.6%
\$1,251 to \$3,333 per month	7,554	37.0%	8,444	42.5%	9,235	46.2%
More than \$3,333 per month	8,548	41.9%	6,610	33.2%	5,823	29.1%

Jobs by Industry Type (2-digit NAICS)

	2008		2005		2002	
	Count	Share	Count	Share	Count	Share
Agriculture, Forestry, Fishing and Hunting	13	0.1%	16	0.1%	23	0.1%
Mining, Quarrying, and Oil and Gas Extraction	4	0.0%	9	0.0%	5	0.0%
Utilities	217	1.1%	71	0.4%	56	0.3%
Construction	441	2.2%	478	2.4%	637	3.2%
Manufacturing	1,471	7.2%	1,541	7.8%	1,715	8.6%
Wholesale Trade	877	4.3%	1,091	5.5%	1,067	5.3%
Retail Trade	1,817	8.9%	1,994	10.0%	1,875	9.4%
Transportation and Warehousing	692	3.4%	650	3.3%	811	4.1%
Information	621	3.0%	630	3.2%	772	3.9%
Finance and Insurance	1,559	7.6%	1,317	6.6%	1,529	7.7%
Real Estate and Rental and Leasing	506	2.5%	764	3.8%	408	2.0%
Professional, Scientific, and Technical Services	1,742	8.5%	1,389	7.0%	1,401	7.0%
Management of Companies and Enterprises	1,080	5.3%	875	4.4%	983	4.9%
Administration & Support, Waste Management and Remediation	1,322	6.5%	1,148	5.8%	1,414	7.1%
Educational Services	1,971	9.7%	1,800	9.1%	1,809	9.1%
Health Care and Social Assistance	2,891	14.2%	2,775	14.0%	2,411	12.1%
Arts, Entertainment, and Recreation	285	1.4%	357	1.8%	318	1.6%
Accommodation and Food Services	1,680	8.2%	1,711	8.6%	1,493	7.5%

Residential Station Areas

- ▶ Increase in number of employed residents
- ▶ Increase in # and % working along LRT
- ▶ Increase in # and % of high income workers
- ▶ Shift in industry of employment

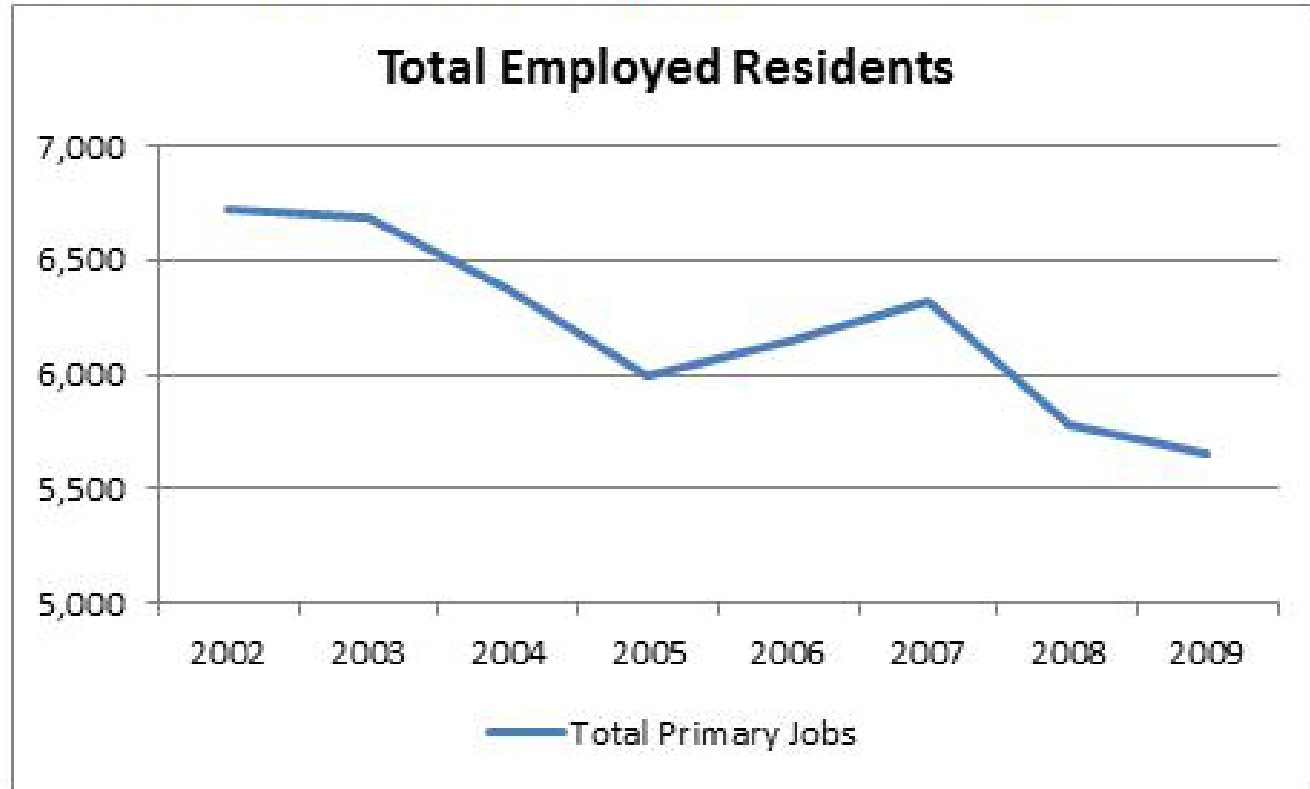
West Broadway Ave & Bottineau Corridor



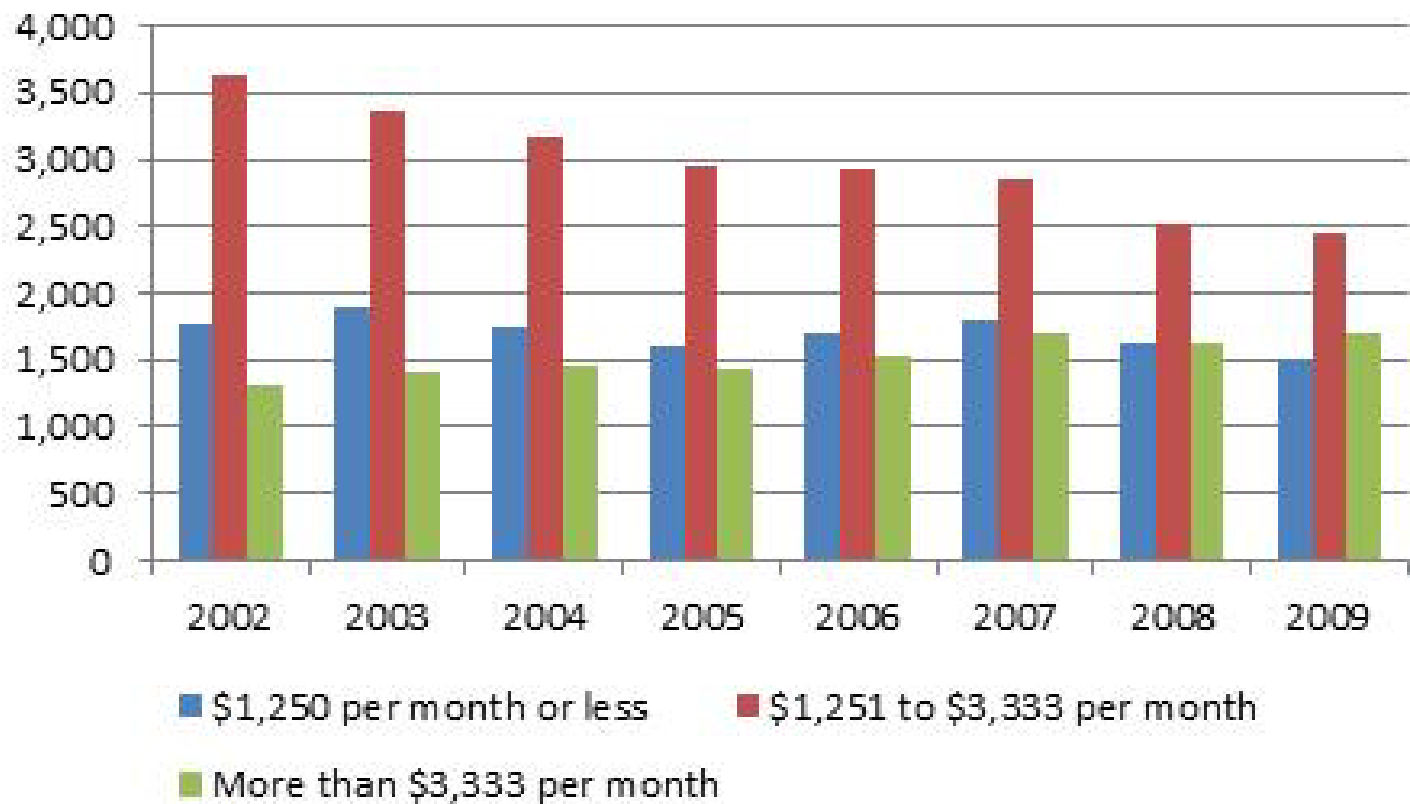
Broadway Ave

West Broadway: Employed Residents within ½ mile (Minneapolis Border to Lyndale Ave N)

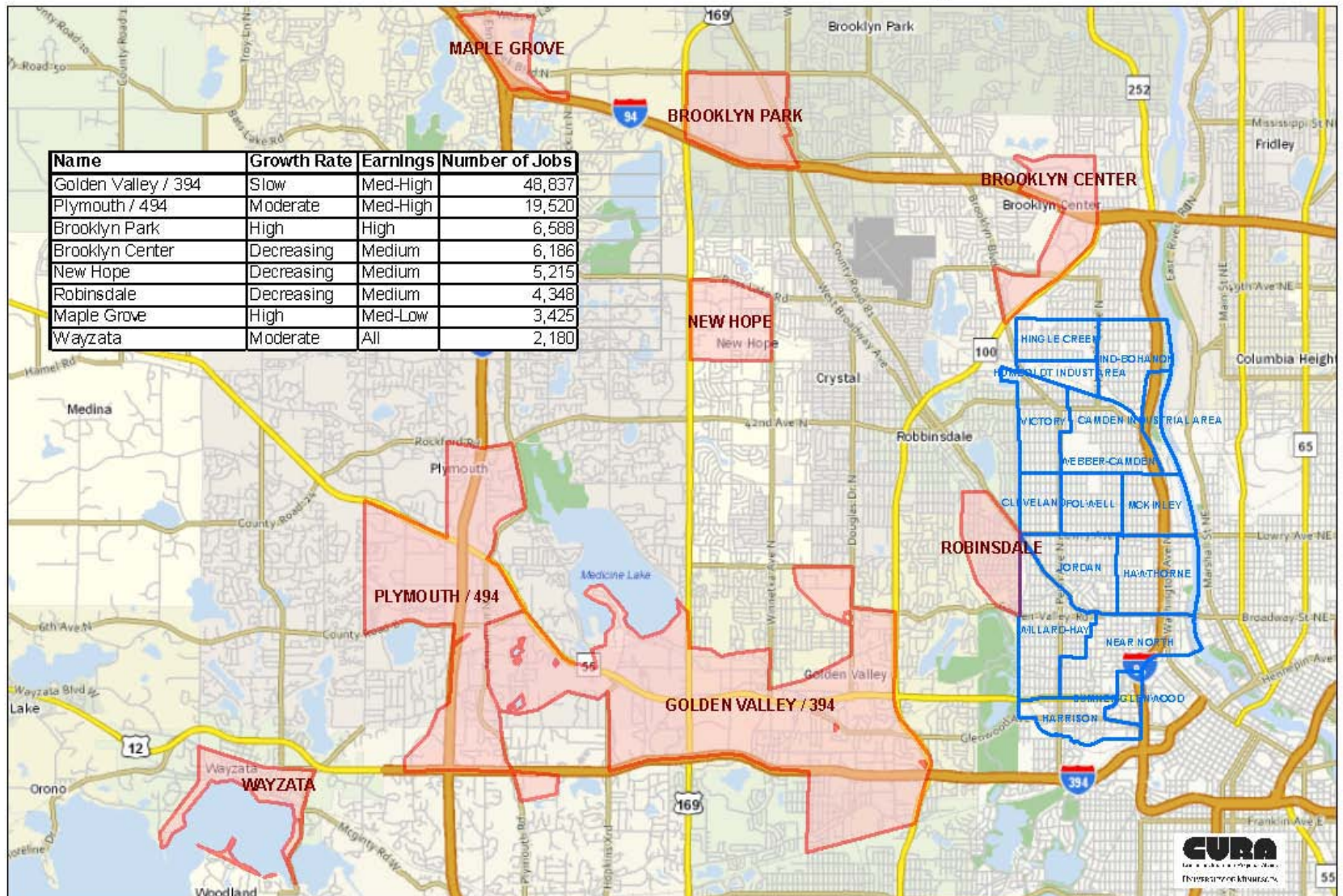
Residents along West Broadway lost approximately 1,000 jobs from 2002 to 2009, almost entirely in the middle-income bracket.



Primary Jobs by Monthly Earnings

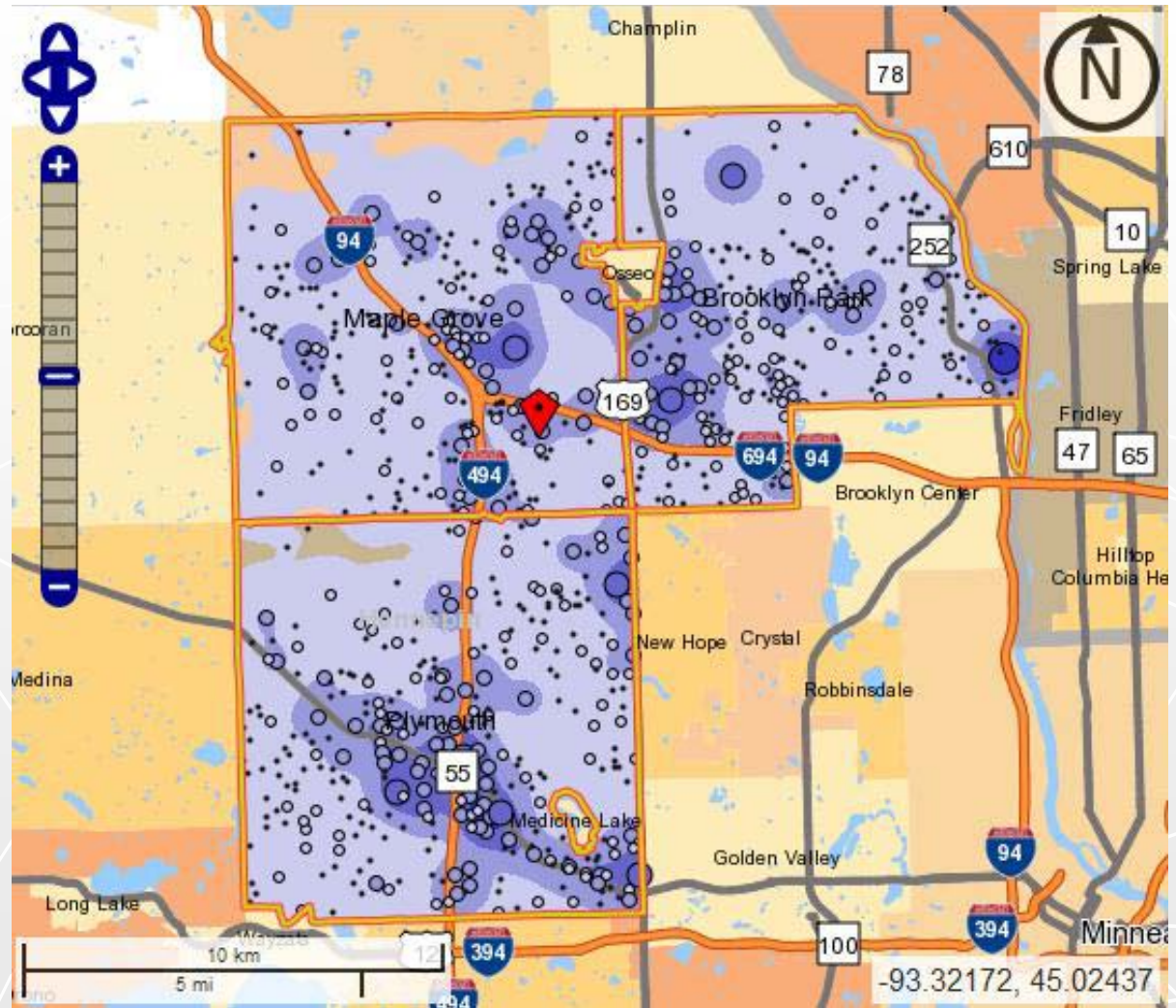


Job Centers North and West of North Minneapolis

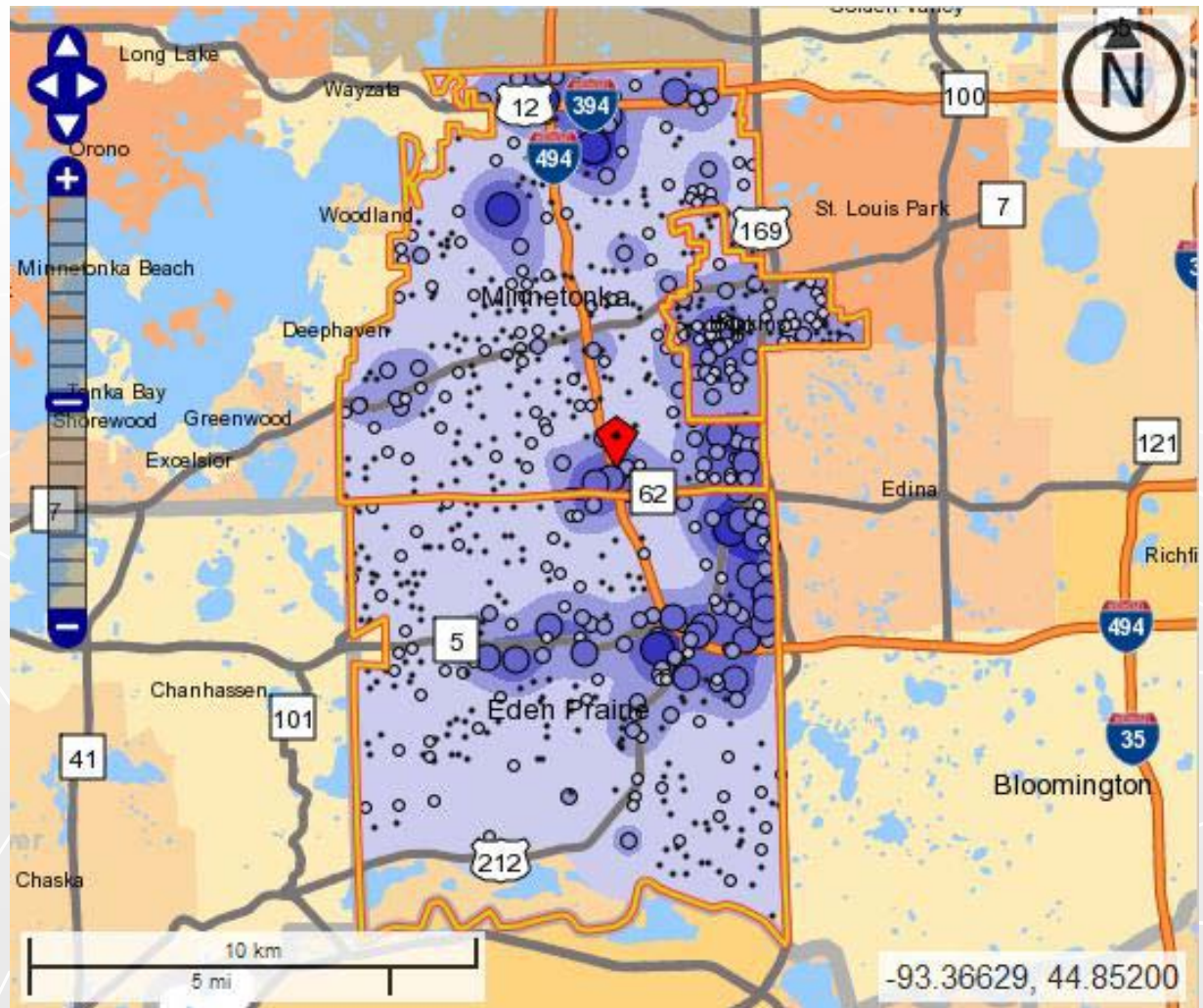


Data Source: Institute on Race and Poverty, Census Transportation Planning Package. Map created 4/2010 by CURA staff.

Jobs in Bottineau Corridor



Jobs in SW LRT Corridor



Future Research

► Data

- 2010 Census
- 5-year ACS data
- Race / Education from LED
- Sales Tax Revenue

► Economic Impacts

► Other Corridors

Questions?

jmatson@umn.edu

(612) 625-0081

<http://www.cura.umn.edu>

