

OnTheMap for Emergency Management

Robert Pitts
Technical Project Manager- LEHD
U.S. Census Bureau

U S C E N S U S B U R E A U

OnTheMap

Emergency Management Uses

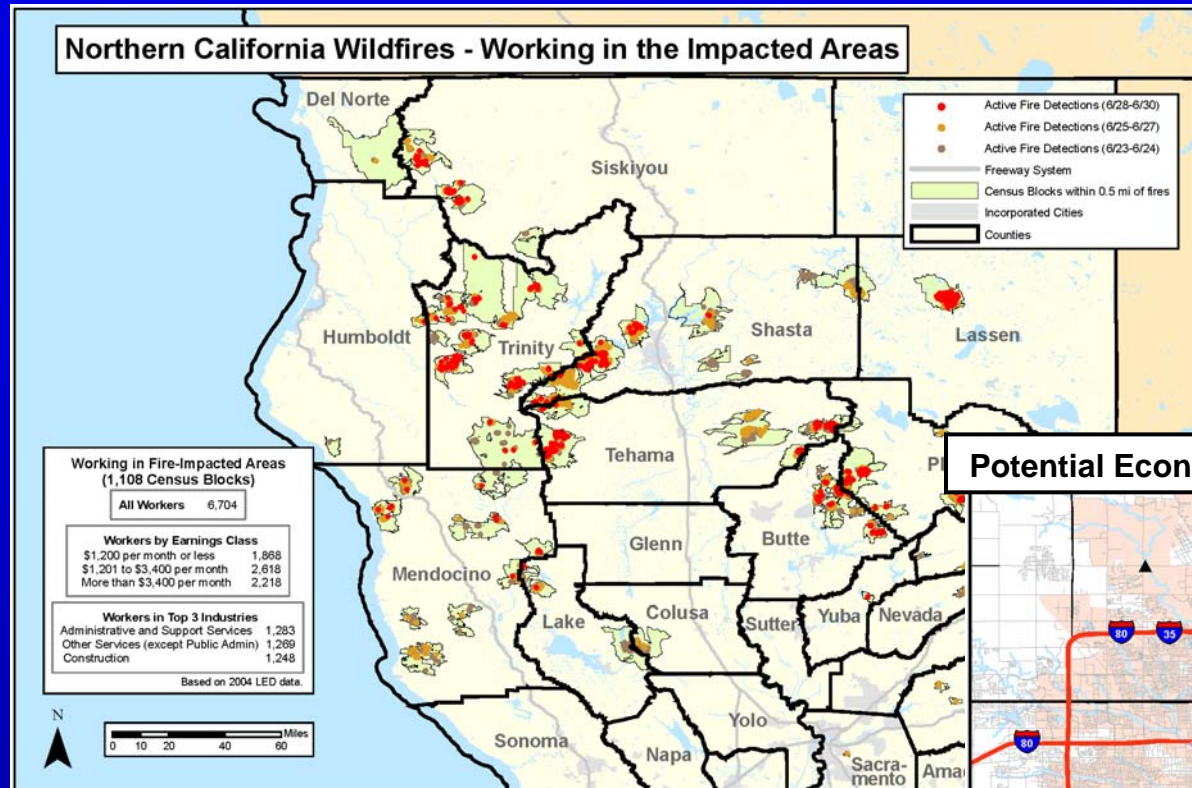
- ✓ **Emergency Preparedness & Response Planning**
 - ✓ **Where should response efforts concentrate?**
 - ✓ **What are the major commuting & evacuation patterns?**
 - ✓ **How do different emergency scenarios compare?**
 - ✓ **How do future scenarios compare to historical events and measured impacts?**

OnTheMap

Emergency Management Uses

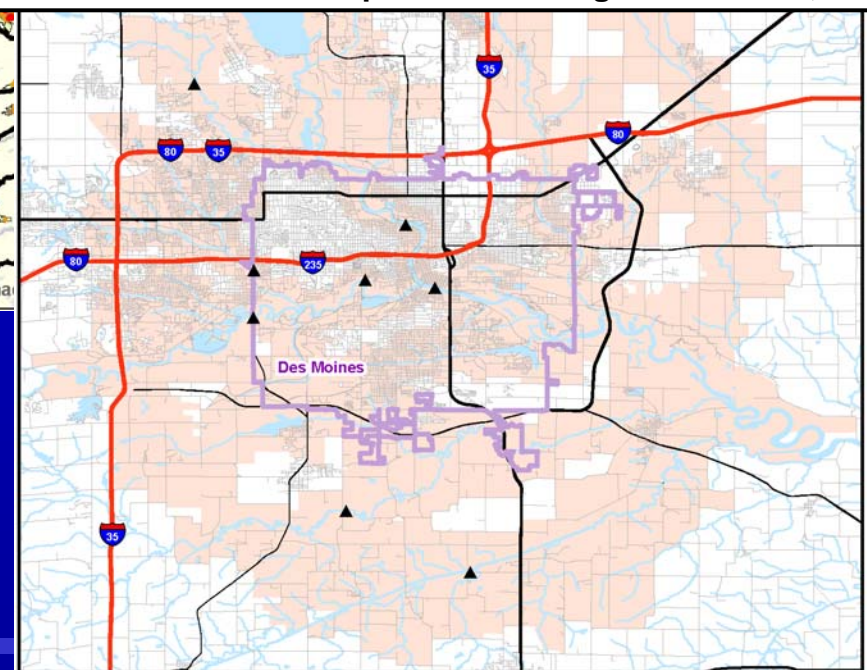
- ✓ **Assessment of Impact on Labor Market**
 - ✓ **How many affected workers and employers?**
 - ✓ **Are they living or working in the affected area?**
 - ✓ **What are the affected industries?**

Emergency Management Examples: Wildfires & Floods



Detailed GIS Analysis
Using OnTheMap's
Synthetic Microdata

Potential Economic Impact of Flooding: Des Moines, IA

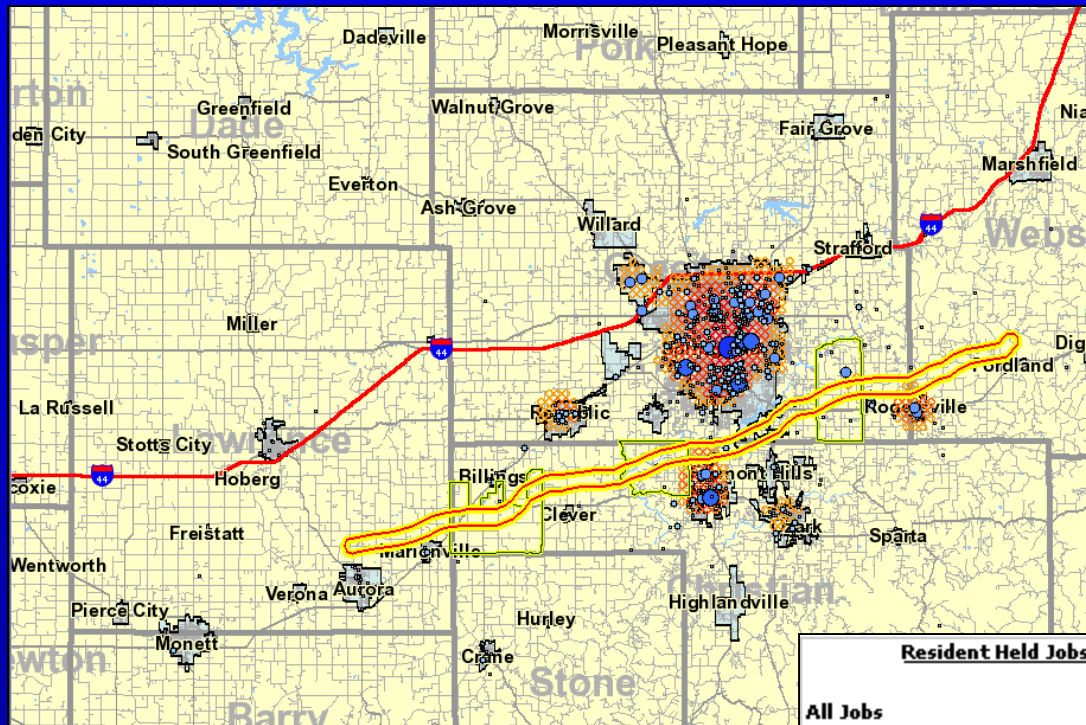


Analysis at the Census
Block level of
geographical detail

USCENSUSBUREAU

Emergency Management Examples: Tornadoes

Where Tornado-Zone Residents Go to Work



| <u>Workers by Industry Type (2-digit NAICS)</u> | | 2003 | |
|--|--|-------|-------|
| | | Count | Share |
| * Agriculture, Forestry, Fishing and Hunting | | 5 | 0.3% |
| * Mining | | 1 | 0.1% |
| * Utilities | | 3 | 0.2% |
| * Construction | | 134 | 8.6% |
| * Manufacturing | | 195 | 12.5% |
| * Wholesale Trade | | 132 | 8.5% |
| * Retail Trade | | 230 | 14.8% |
| * Transportation and Warehousing | | 79 | 5.1% |
| * Information | | 54 | 3.5% |
| * Finance and Insurance | | 82 | 5.3% |
| * Real Estate and Rental and Leasing | | 25 | 1.6% |
| * Professional, Scientific, and Technical Services | | 70 | 4.5% |
| * Management of Companies and Enterprises | | 35 | 2.2% |
| * Administration & Support, Waste Management and Remediation | | 76 | 4.9% |
| * Educational Services | | 13 | 0.8% |
| * Health Care and Social Assistance | | 202 | 13% |
| * Arts, Entertainment, and Recreation | | 23 | 1.5% |
| * Accommodation and Food Services | | 124 | 8% |
| * Other Services (excluding Public Administration) | | 74 | 4.8% |
| * Public Administration | | 0 | 0% |

| <u>Resident Held Jobs</u> | | |
|--|-------|--------|
| All Jobs | 1,943 | 100.0% |
| All Jobs (Private Sector Only) | 1,644 | 84.6% |
| All Primary Jobs (Worker's highest paying job) | 1,843 | 94.9% |
| All Primary Jobs (Private Sector Only) and Baseline Count of Workers | 1,557 | 80.1% |
| <u>Workers by Earnings Paid</u> | | |
| | 2003 | |
| | Count | Share |
| \$1,200 per month or less | 452 | 29% |
| \$1,201 to \$3,400 per month | 674 | 43.3% |
| More then \$3,400 per month | 431 | 27.7% |

Emergency Management Examples: Hurricanes

Hurricane Hanna Impact on Work Area

U.S. Census Bureau [LED OnTheMap](#) [LED Home](#) [Help](#) [Return to Entry Page](#)

[Search](#) [Map Key](#) [Layers](#) [Analysis](#) [Results](#)

Hurricane Hanna Work Area Profile (NWS Path Prediction Through 8AM Sat.)

Overlay Controls

2006

Points ☐

Thermals ☒

Selection Outline ☒

Selection Fill ☐

Animate ☐

Points: ☒ Animate

Thermals: ☒ Animate

[Zoom to Selection](#)

Report Output Options:

View Report As:

- [HTML](#)
- [Excel \(XLS\)](#)
- [View Map and Report PDF](#)
- [View Report-only PDF](#)

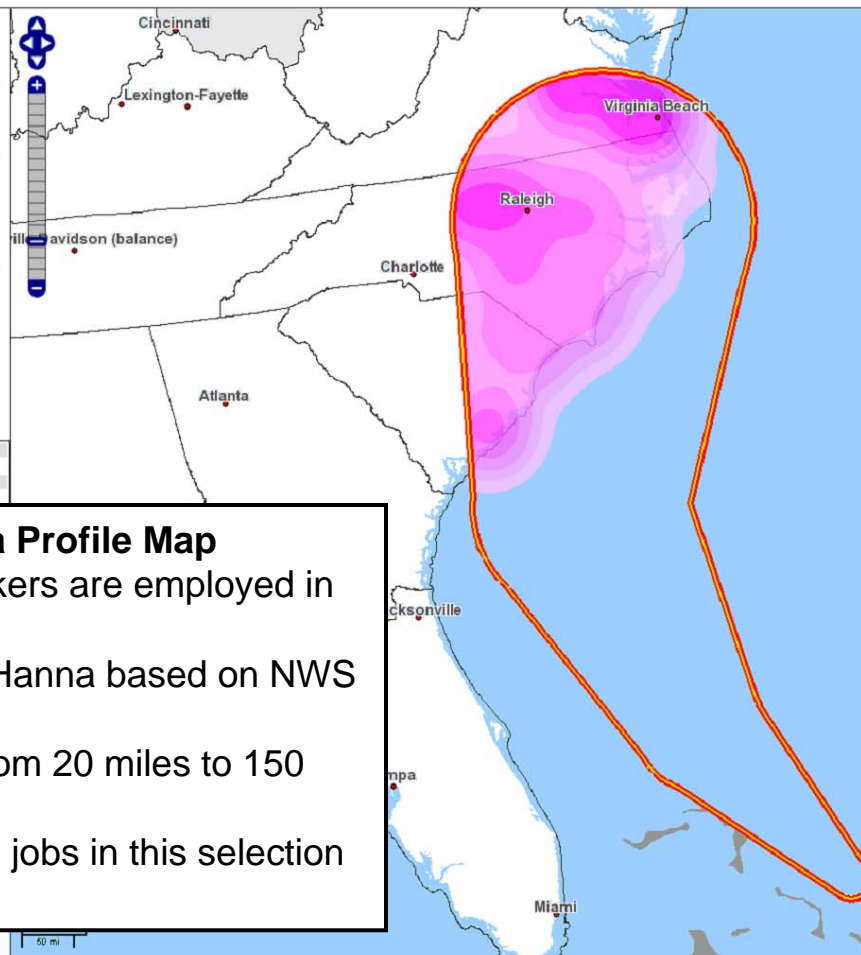
Analysis Settings

Report Year(s): 2006

Employment Type: Jobs

Labor Market Segment: All Workers

Primary Selection Layer: No layer selected



Work Area Profile Map

- Shows where workers are employed in the impact zone.
- Projected path of Hanna based on NWS data.
- Plume selection from 20 miles to 150 miles.
- Approx. 3.9 million jobs in this selection for 2006.

| Total Jobs | | |
|---|-----------|--------|
| | 2006 | |
| | Count | Share |
| Total Jobs | 3,851,764 | 100.0% |
| Jobs by Worker Age | | |
| | 2006 | |
| | Count | Share |
| Age 30 or younger | 986,540 | 25.6% |
| Age 31 to 54 | 2,223,878 | 57.7% |
| Age 55 or older | 641,341 | 16.7% |
| Jobs by Earnings Paid | | |
| | 2006 | |
| | Count | Share |
| \$1,200 per month or less | 1,151,809 | 29.9% |
| \$1,201 to \$3,400 per month | 1,607,250 | 41.7% |
| More than \$3,400 per month | 1,092,703 | 28.4% |
| Jobs by Industry Type (2-digit NAICS) | | |
| | 2006 | |
| | Count | Share |
| Agriculture, Forestry, Fishing and Hunting | 27,209 | 0.7% |
| Mining, Quarrying, and Oil and Gas Extraction | 2,960 | 0.1% |
| Utilities | 20,313 | 0.5% |
| Construction | 250,366 | 6.5% |
| Manufacturing | 432,164 | 11.2% |
| Wholesale Trade | 156,254 | 4.1% |
| Retail Trade | 484,900 | 12.6% |
| Transportation and Warehousing | 112,670 | 2.9% |
| Information | 79,120 | 2.1% |
| Finance and Insurance | 124,910 | 3.2% |

U.S. CENSUS BUREAU
Helping You Make Informed Decisions

291842.50000, 889055.83333
Home | Census 2000 | Subjects A to Z | FAQs | Search | Data Tools | Catalog | Quality | Privacy Policy | Policies | Contact Us
Source: U.S. Census Bureau, Center for Economic Studies, Longitudinal Employer-Household Dynamics Program | e-mail: ces.local.employment.dynamics@census.gov

Current Data Import Capability

U.S. Census Bureau **LED OnTheMap** [LED Home](#) [Help](#) [Return to Entry Page](#)

Search Base Map **Analysis** Results Load Save Hide/Show Tabs Print Map Link To Me Previous Identify Clear Overlays

Back 2. Study Area Selection Next More

Selection Tools

- ☐ Navigation (Pan, Zoom, etc.)
- ☐ Point(s)
- ☐ Line
- ☐ Polygon (Freehand)
- ☐ Modify Line/Polygon

Import From:

- ☒ GPS
- ☐ SHP
- ☐ KML
- ☐ Address

Clear Selection

☒ **Add Layer Selection**

States

☐ **Add Buffer to Selection**

☒ Simple/Ring

Radius: miles

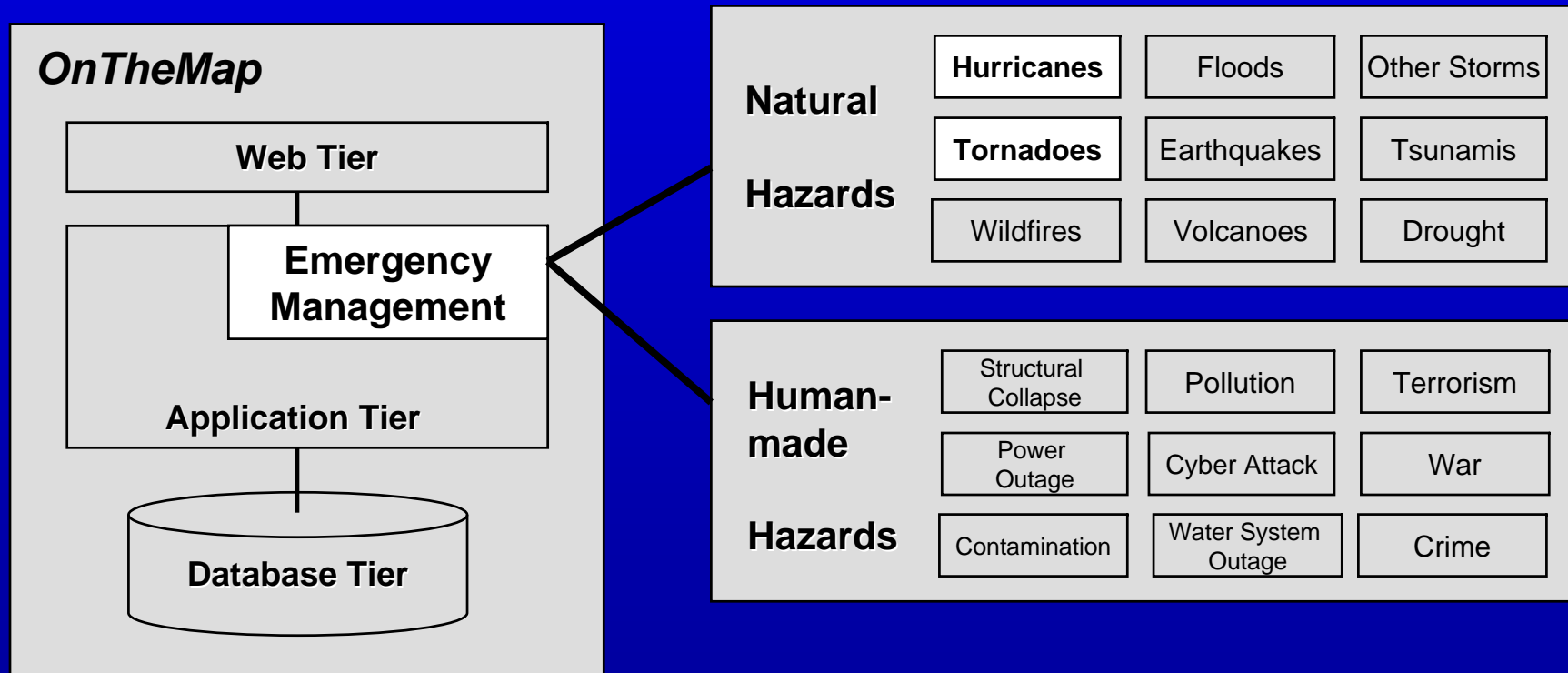
☐ Donut

1000 km
500 mi

-109.41748, 31.37433

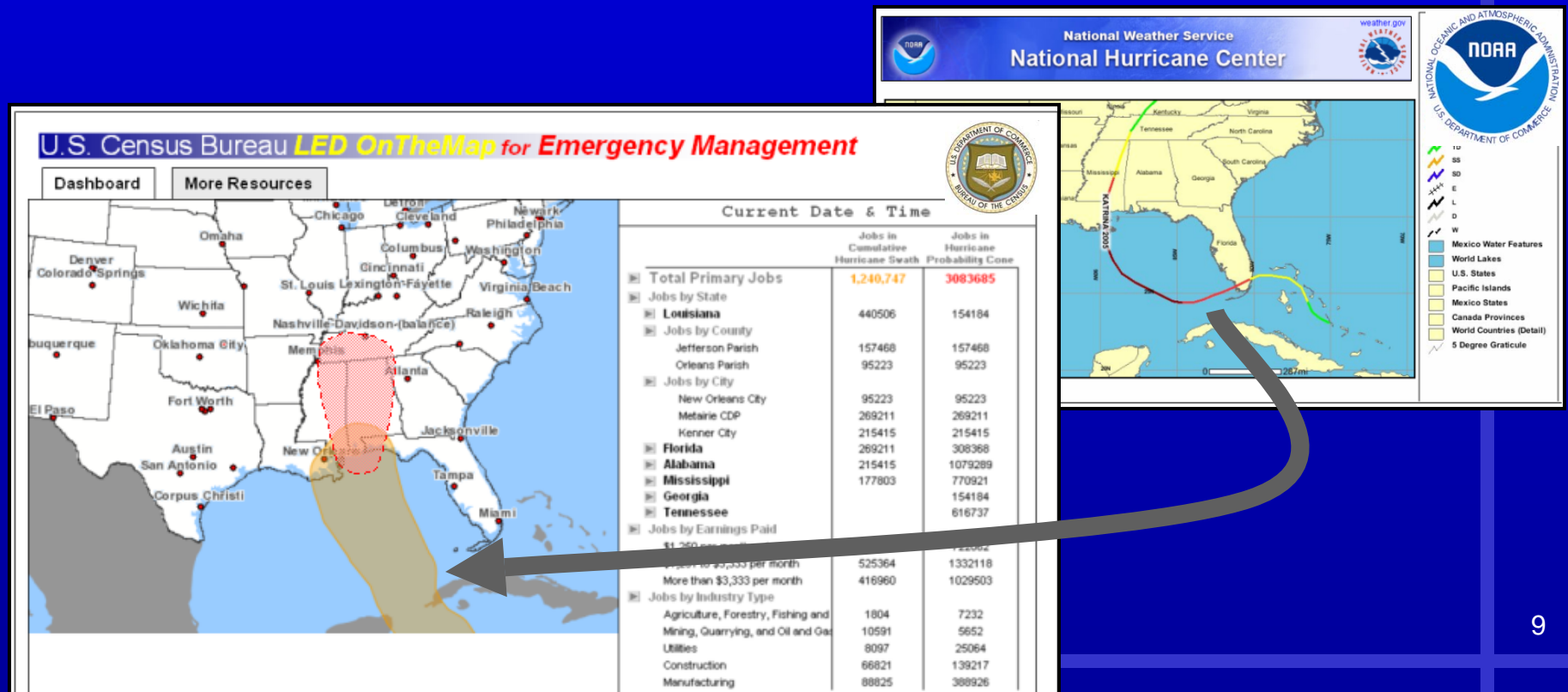
Conceptual Application Overview

- ✓ Spin-off application from OnTheMap
- ✓ Utilizes existing system architecture & technology
- ✓ Proof-of-concept incorporating hurricanes & tornadoes



Census – NOAA NWS Collaboration

- ✓ Dashboard integrating OnTheMap / NWS hurricane & tornado data
- ✓ Real-time data integration/update
- ✓ No user interaction or specialized expertise required
- ✓ Efficiency and value of existing data and systems increased

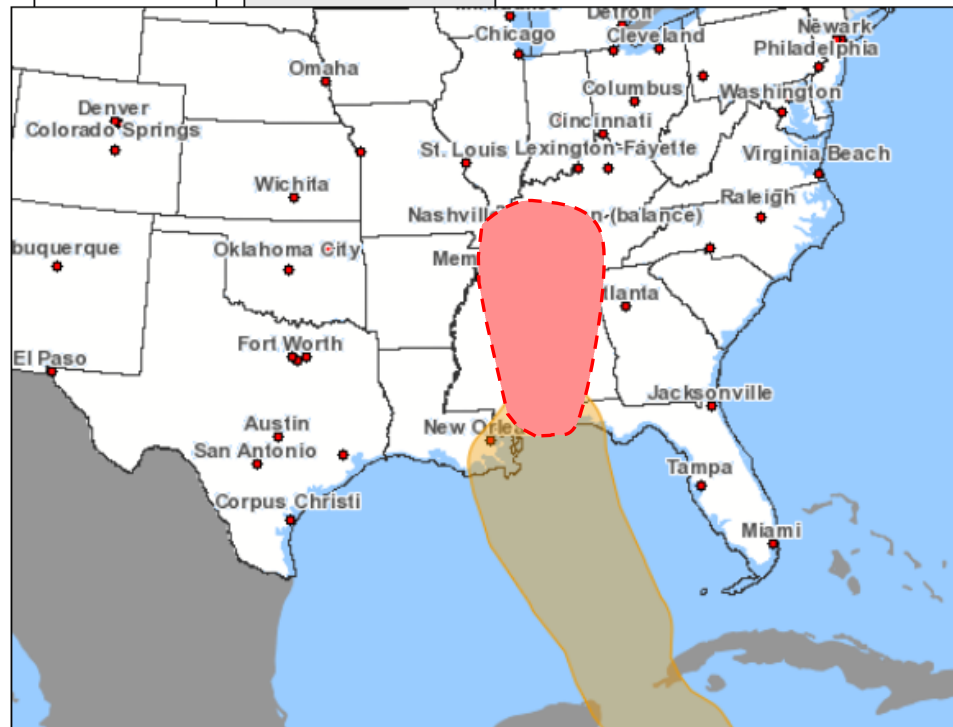


Dashboard Mockup

U.S. Census Bureau *LED OnTheMap* for *Emergency Management*

Dashboard

More Resources



Current Date & Time

| | Jobs in Cumulative Hurricane Swath | Jobs in Hurricane Probability Cone |
|------------------------------------|--|--|
| ▶ Total Primary Jobs | 1,240,747 | 3083685 |
| ▶ Jobs by State | | |
| ▶ Louisiana | 440506 | 154184 |
| ▶ Jobs by County | | |
| Jefferson Parish | 157468 | 157468 |
| Orleans Parish | 95223 | 95223 |
| ▶ Jobs by City | | |
| New Orleans City | 95223 | 95223 |
| Metairie CDP | 269211 | 269211 |
| Kenner City | 215415 | 215415 |
| ▶ Florida | 269211 | 308368 |
| ▶ Alabama | 215415 | 1079289 |
| ▶ Mississippi | 177803 | 770921 |
| ▶ Georgia | | 154184 |
| ▶ Tennessee | | 616737 |
| ▶ Jobs by Earnings Paid | | |
| \$1,250 per month or less | 298423 | 722062 |
| \$1,251 to \$3,333 per month | 525364 | 1332118 |
| More than \$3,333 per month | 416960 | 1029503 |
| ▶ Jobs by Industry Type | | |
| Agriculture, Forestry, Fishing and | 1804 | 7232 |
| Mining, Quarrying, and Oil and Gas | 10591 | 5652 |
| Utilities | 8097 | 25064 |
| Construction | 66821 | 139217 |
| Manufacturing | 88825 | 388926 |

Resources Page Mockup

U.S. Census Bureau *LED OnTheMap* for *Emergency Management*

Dashboard

More Resources

Hurricanes

Tornadoes

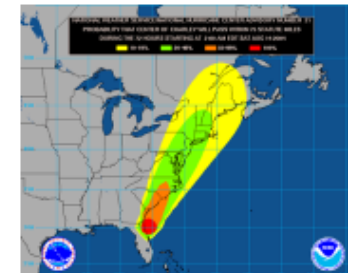
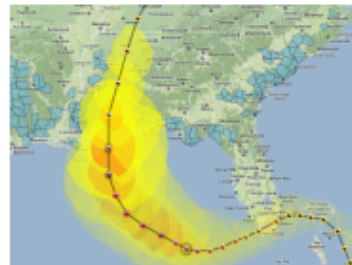
Wildfires

Floods

Getting Started

Sample Analyses

XXXXXXXXXXXXXXXXXXXX
XXXXXXXXXXXXXXXXXXXX
XXXXXXXXXXXXXXXXXXXX
XXXXXXXXXXXXXXXXXXXX
XXXXXXXXXXXXXXXXXXXX
XXXXXXXXXXXXXXXXXXXX
XXXXXXXXXXXXXXXXXXXX



Archived Data

Data Sources

What's Next?

- ✓ Release of OnTheMap for Emergency Management Beta Version this summer
- ✓ If interested in getting involved, sharing experiences, or providing feedback...please contact:

CES.Local.Employment.Dynamics@census.gov