

Local Employment Dynamics: Upcoming Enhancements

**Matthew Graham
Erika McEntarfer, Ph. D.
Jeremy S. Wu, Ph. D.**

**2010 LED Partnership Annual Workshop
Arlington, VA
March 11, 2010**

Where We Are Now

Infrastructure

Longitudinal National Frame of Jobs

Data

Quarterly
Workforce
Indicators

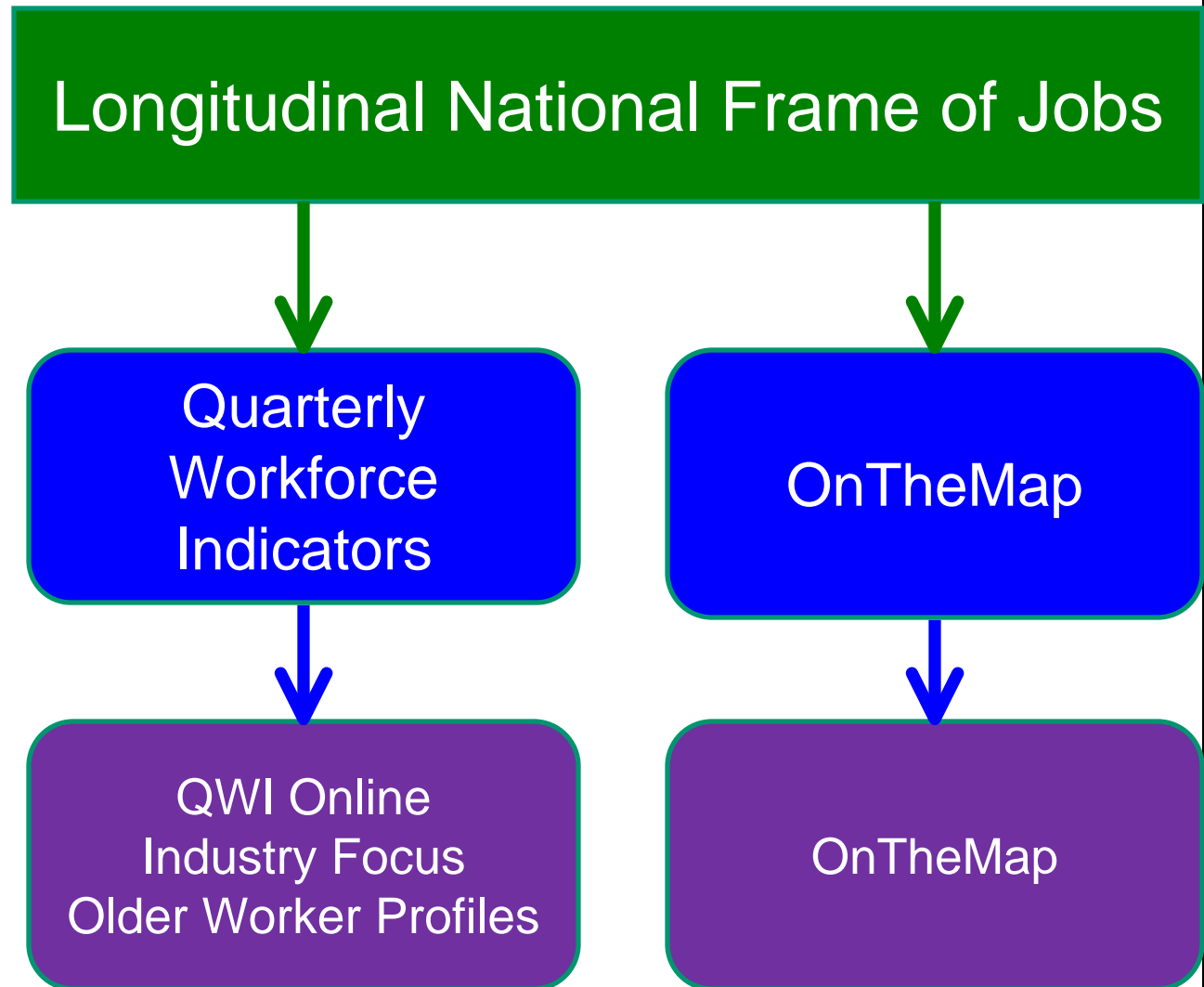
OnTheMap

Products

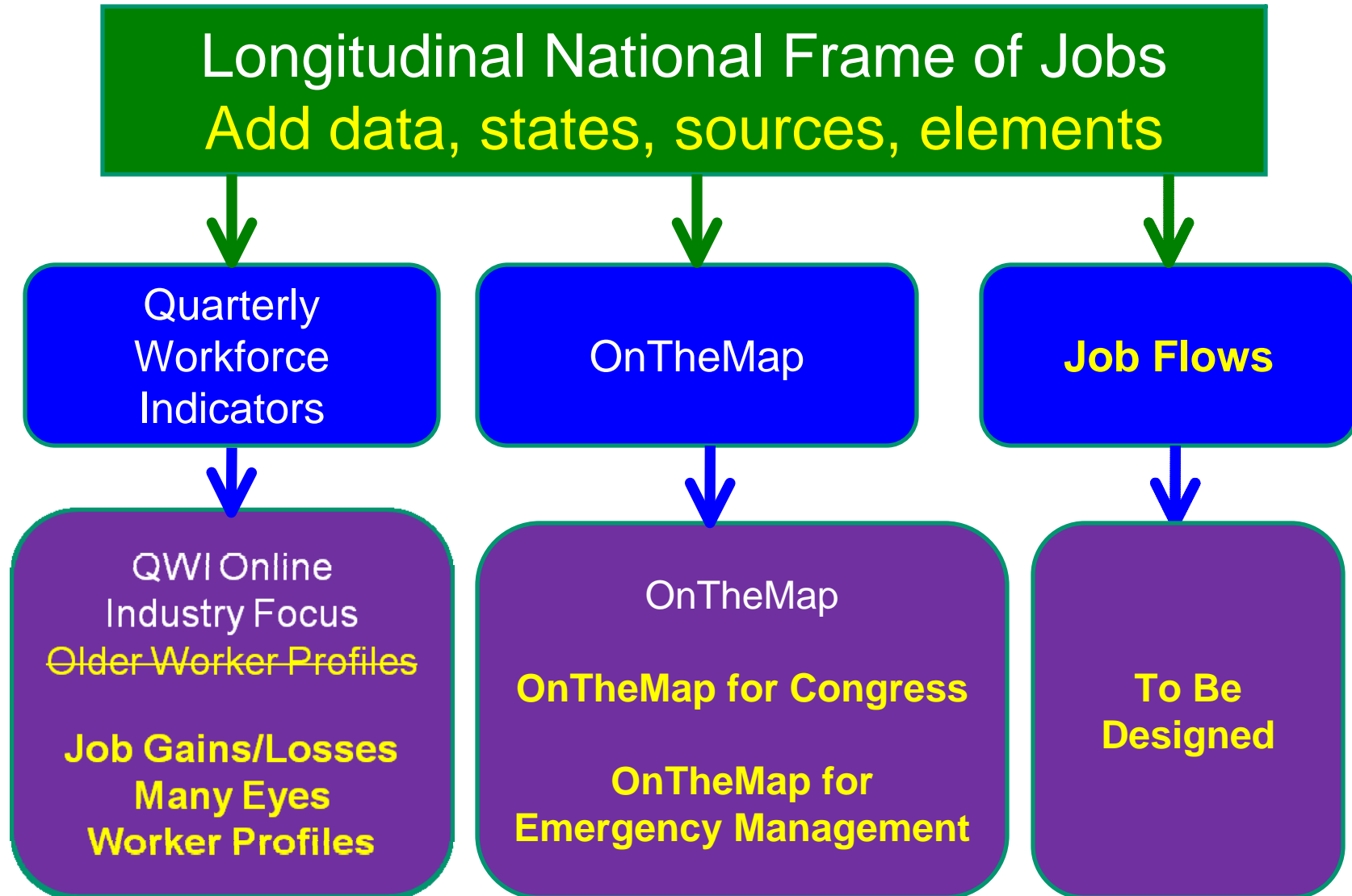
QWI Online
Industry Focus
Older Worker Profiles

OnTheMap

U S C E N S U S B U R E A U

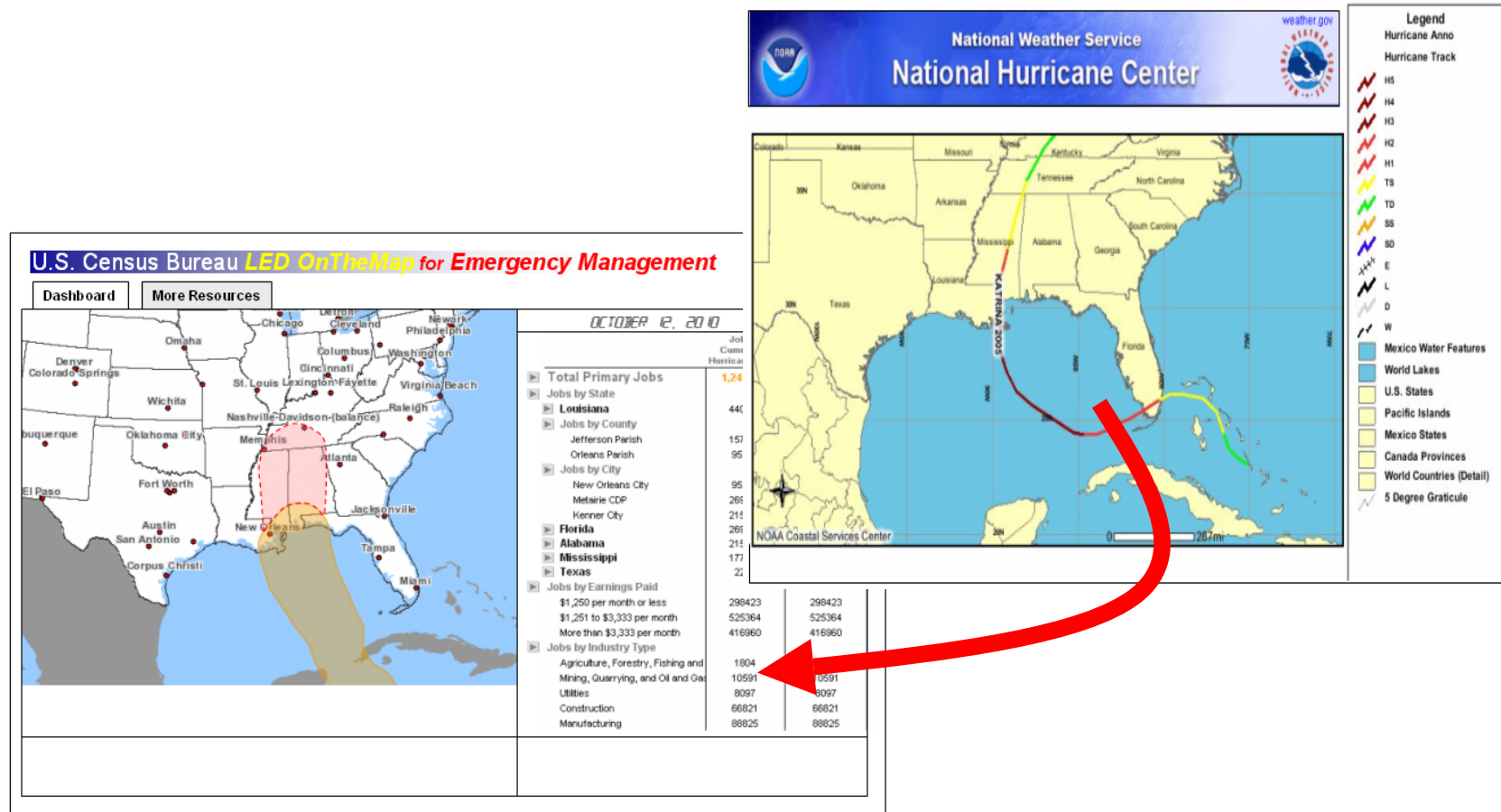


Where We Are Heading



U S C E N S U S B U R E A U

Coming Attraction OnTheMap for Emergency Management



USCENSUSBUREAU

New Product: Job Gains/Losses

Net Job Gains and Losses/Net Job Growth Rates

Data Source: [QWI Online](#), Local Employment Dynamics

Indicator: Beginning of Quarter Employment by State, Private Industries Only

[Methodology](#) (PDF, 32KB)

2008Q1-2009Q1 2007Q4-2008Q4

2008Q1-2009Q1

Scope: 46 states; CT, DC, MA, NC, and NH not present

Net Job Gains and Losses Net Job Growth Rates

Private Sector Only	Total Workers*	Female Workers	Male Workers	State
All Industries	-4,216,691	-1,461,846	-2,754,844	
Agriculture	-8,045	-556	-7,489	
Mining	21,900	3,635	18,249	
Utilities	23,150	6,091	17,058	
Construction	-821,460	-155,216	-666,241	
Manufacturing	-1,062,984	-337,287	-725,694	
Wholesale Trade	-267,455	-85,739	-181,712	
Age 14-18	-558,517	-279,979	-278,538	PDF, 25KB
Age 19-21	-441,281	-179,977	-261,308	PDF, 25KB
Age 22-24	-400,089	-148,945	-251,142	PDF, 25KB
Age 25-34	-887,717	-273,122	-614,603	PDF, 25KB
Age 35-44	-1,399,053	-526,707	-872,352	PDF, 25KB
Age 35-54	-640,595	-198,635	-441,964	PDF, 25KB
Age 55-64	92,024	115,995	-23,975	PDF, 25KB
Age 65-99	18,548	29,515	-10,968	PDF, 25KB

* Total may not agree due to rounding

Job Gains/Losses Data File Download

	All industries by Worker Gender	Industry Sector by Worker Gender	Age Group by Worker Gender
2008Q1-2009Q1	CSV , Excel (XLS, 84KB)	CSV , Excel (XLS, 1.47MB)	CSV , Excel (XLS, 496KB)
2007Q4-2008Q4	CSV , Excel (XLS, 84KB)	CSV , Excel (XLS, 1.47MB)	CSV , Excel (XLS, 692KB)

QUICK LINKS

Tools

[Release Schedule](#)

[OnTheMap Version 4 \(Help\)](#)

[QWI Online \(Help\)](#)

[Job Gains/Losses](#)

[Industry Focus](#)

[Older Worker Profiles](#)

[CED HotReport](#)

Learning

[e-Learning](#)

[Webinars](#)

[Workshops](#)

[PDF, 25KB](#)

[PDF, 25KB](#)

[PDF, 25KB](#)

[PDF, 25KB](#)

[PDF, 25KB](#)

[PDF, 25KB](#)

[PDF, 25KB](#)

[PDF, 25KB](#)

[PDF, 25KB](#)

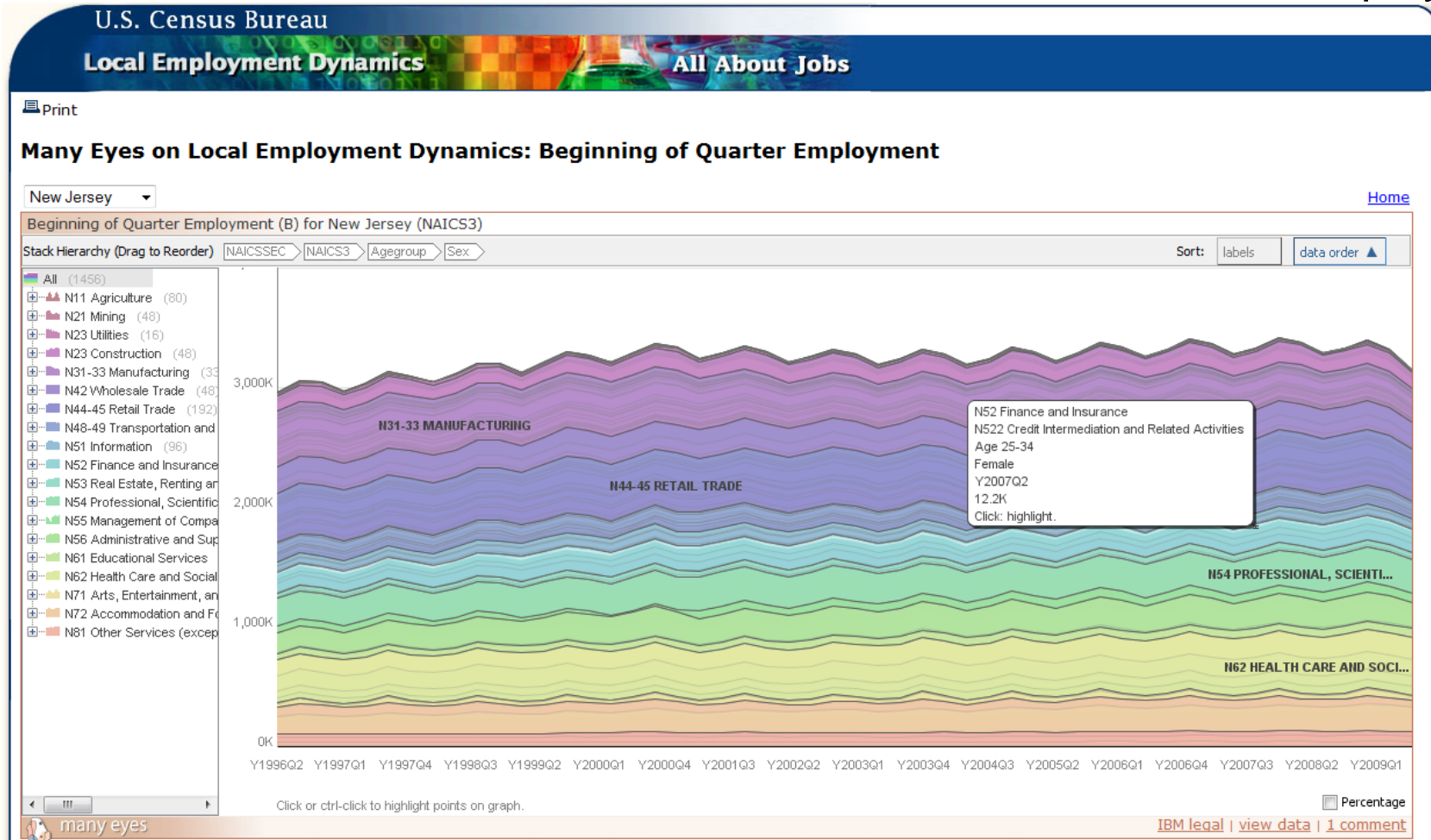
[PDF, 25KB](#)

[PDF, 25KB](#)

USCENSUSBUREAU

New Product: Many Eyes

- IBM visualization tool
- ~140,000 time series charts
- 47 states
- 2- and 3-digit NAICS
- Gender and Age groups
- Number or Percent display



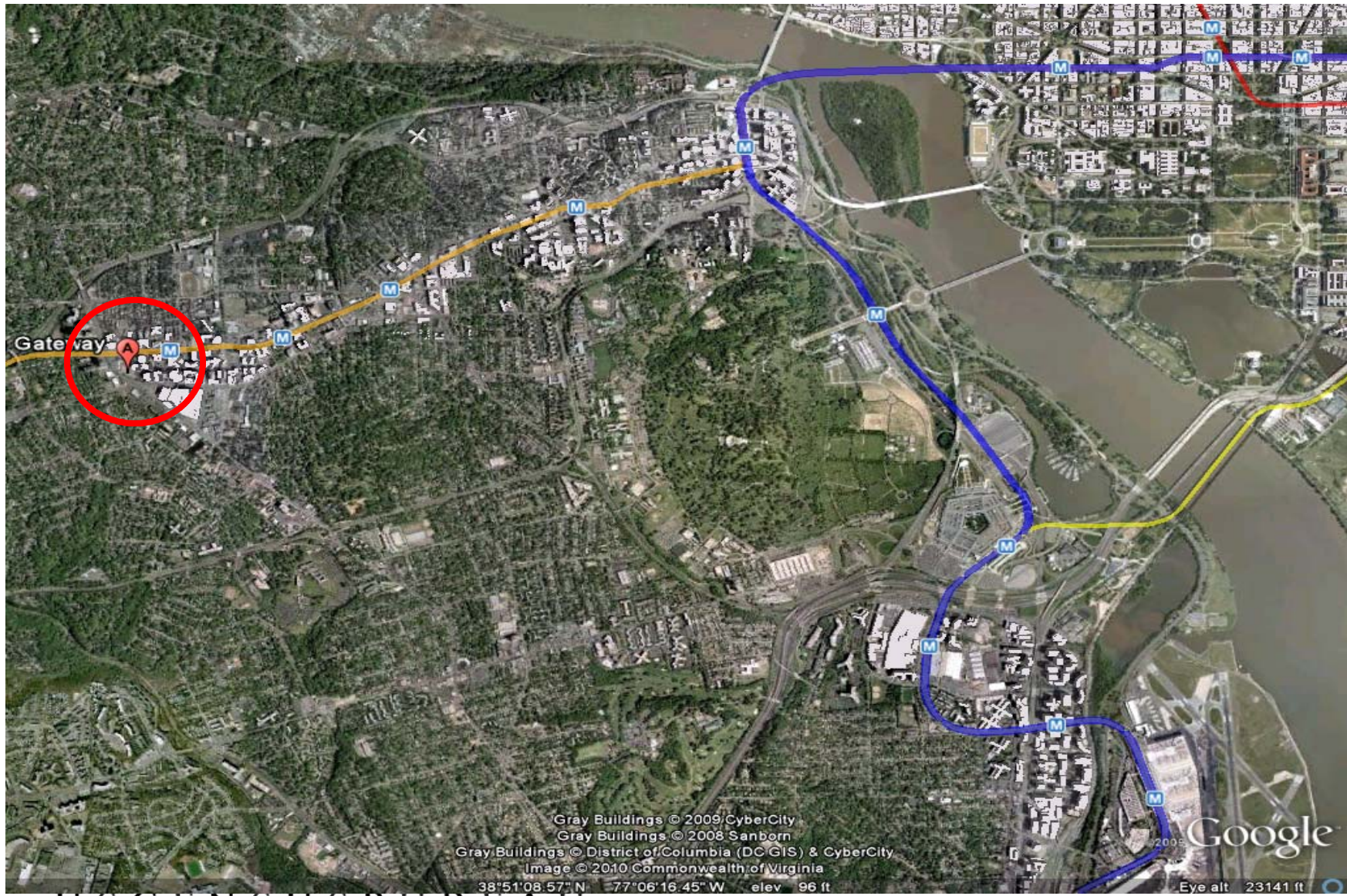
USCENSUSBUREAU

Worker Profiles

The Geographic Distribution and Characteristics of Older Workers in Iowa: 2004	
<i>Local Employment Dynamics</i>	
What's in This Report? HIGHLIGHTS THE LOCAL EMPLOYMENT DYNAMICS PROGRAM SOURCES AND ACCURACY OF THE ESTIMATES CHARACTERISTICS AND EMPLOYMENT DYNAMICS OF OLDER WORKERS Table 1—Percentage of Workers by Age in Metropolitan Statistical Areas and Nonmetropolitan Area Workplaces: 2004	HIGHLIGHTS The statistics about older workers in Iowa in 2004 show this group's proportion of the state's labor force has increased. Changes in the size and composition of age groups may affect government program and policy choices and the options available to businesses. National projections indicate that the population 65 and older will increase from about 1 in 8 people to 1 in 5 people by 2030, so that older workers will likely compose an increasingly larger proportion of each state's workforce. ¹ Whether, and in what industries, the large wave of workers born during the Baby Boom of 1946 to 1964 are currently working may influence their

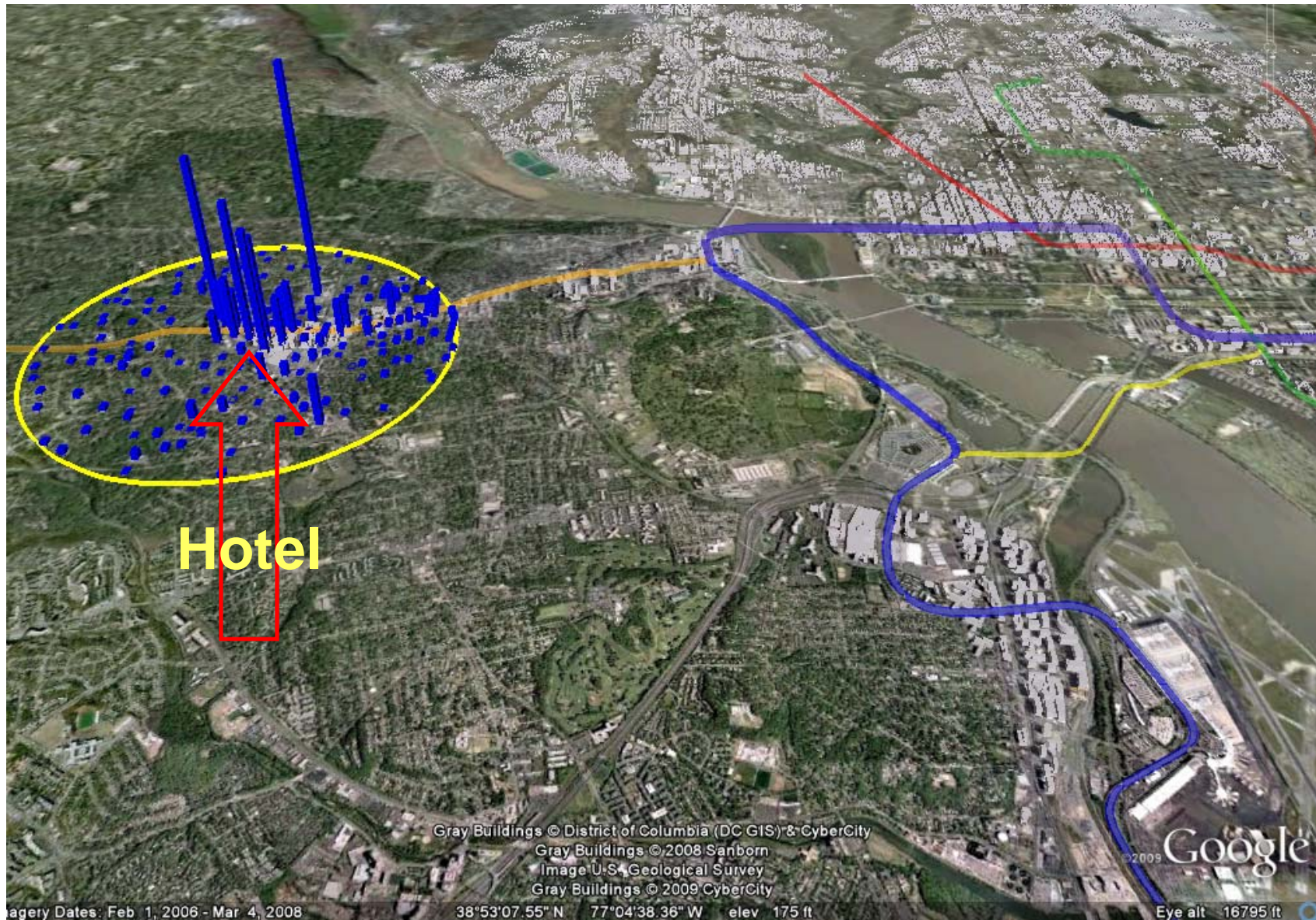
- Automate production
- Remove time limit
- Beyond older workers
 - By age group
 - By gender
 - By industry group
- Drop text template
- Multi-year project
- To be designed

Where We Are – Arlington, VA



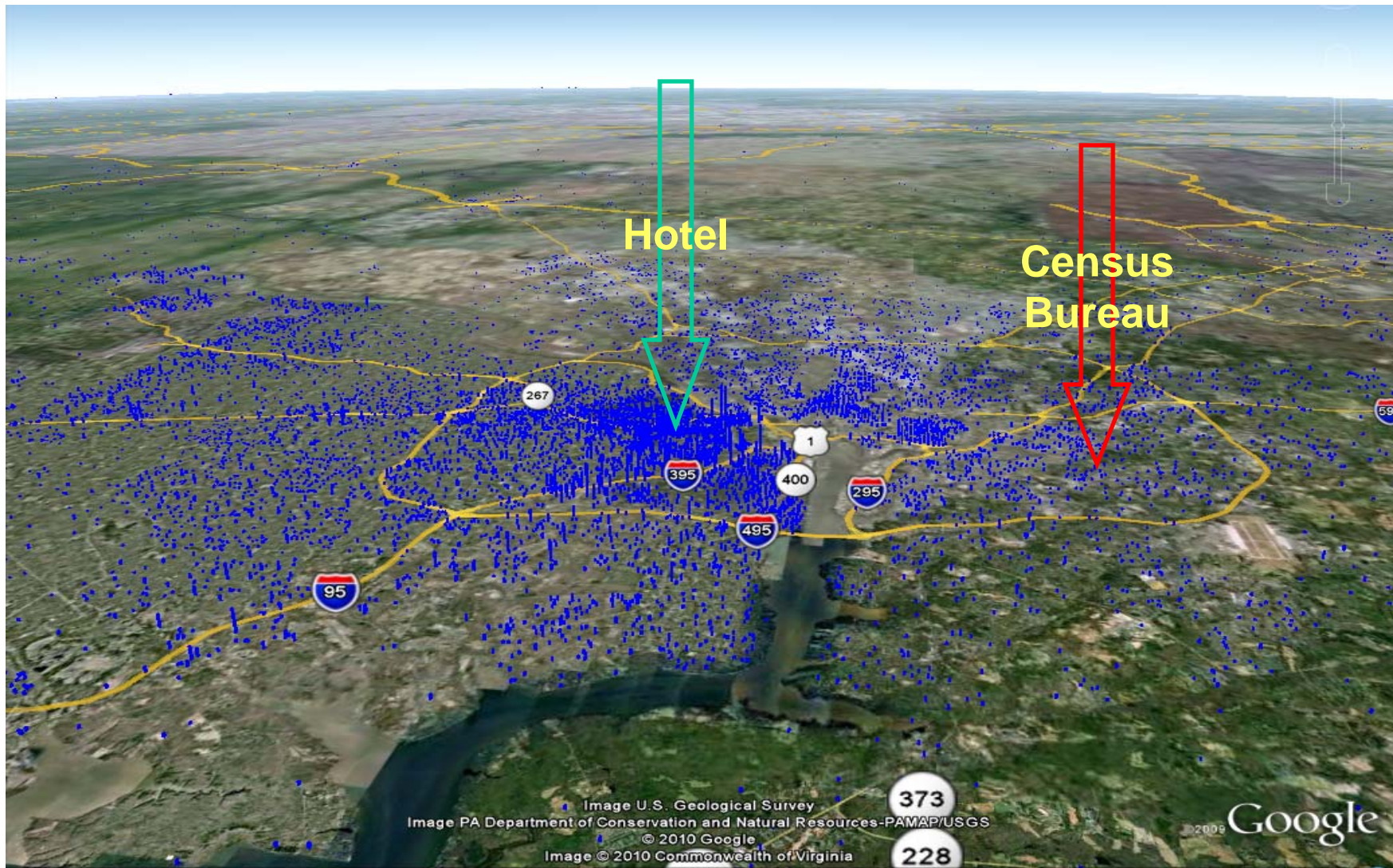
USCENSUSBUREAU

Jobs Within 1 Mile of Hotel



US CENSUS BUREAU

Where Workers Employed Within 1 Mile of the Hotel Lived in 2008



USCENSUSBUREAU

OnTheMap Version 4

Team Members and Contributors

John Abowd

Fredrik Andersson

Patti Becker

John Carpenter

Colleen Flannery

Matt Graham

Heath Hayward

Emily Isenberg

Walter Kydd

Mark Kutzbach

Dan Little

Bong Mulato

Dorothy Paugh

Rob Pitts

Peter Van Rossum

Ryan Sellars

Chip Walker

Jeremy Wu

Chaoling Zheng

Alpha and Beta testers

All unsung heroes

Contact Us

Comments/Suggestions

CES.local.employment.dynamics@census.gov

Jeremy.S.Wu@census.gov

Local Employment Dynamics Website

<http://lehd.did.census.gov>

Join the Listservs

Lehd-general@lists.census.gov

Lehd-onthemap@lists.census.gov

Work Area Profile Report

Report Settings

Year(s): 2008
 Job Type: Primary Jobs
 Labor Market Segment: All Workers
 Selection Tool: Point(s)
 Add Buffer Type: Simple/Ring
 Buffer Size(s): Radius: 1.00 mi
 Map Precision: Blocks
 Selected Block Count: 310
 Query ID: 126240194614921
 Report Generation Date: Version 4.0 generated on 01/01/2010 22:12

Total Primary Jobs

	2008	
	Count	Share
Total Primary Jobs	31,260	100.0%

Jobs by Worker Age

	2008	
	Count	Share
Age 30 or younger	7,844	25.1%
Age 31 to 54	18,072	57.8%
Age 55 or older	5,344	17.1%

Jobs by Earnings Paid

	2008	
	Count	Share
\$1,250 per month or less	4,333	13.9%
\$1,251 to \$3,333 per month	7,811	25.0%
More than \$3,333 per month	19,116	61.2%

Jobs by Industry Type (2-digit NAICS)

	2008	
	Count	Share
Agriculture, Forestry, Fishing and Hunting	0	0.0%
Mining, Quarrying, and Oil and Gas Extraction	0	0.0%
Utilities	0	0.0%
Construction	784	2.5%
Manufacturing	37	0.1%
Wholesale Trade	163	0.5%
Retail Trade	1,640	5.2%
Transportation and Warehousing	150	0.5%
Information	1,145	3.7%
Finance and Insurance	1,474	4.7%
Real Estate and Rental and Leasing	577	1.8%
Professional, Scientific, and Technical Services	7,934	25.4%
Management of Companies and Enterprises	1,848	5.9%
Administration & Support, Waste Management and Remediation	1,179	3.8%
Educational Services	7,017	22.4%
Health Care and Social Assistance	1,431	4.6%
Arts, Entertainment, and Recreation	333	1.1%
Accommodation and Food Services	2,095	6.7%
Other Services (excluding Public Administration)	3,362	10.8%
Public Administration	91	0.3%

Labor Shed Report

<u>Total Primary Jobs</u>	2008	
	Count	Share
Total Primary Jobs	31,260	100.0%

<u>Jobs in Places (Cities, CDPs, etc.) Where Workers Live</u>	2008	
	Count	Share
Arlington CDP, VA	6,033	19.3%
Washington city, DC	2,200	7.0%
Alexandria city, VA	1,799	5.8%
Annandale CDP, VA	548	1.8%
Reston CDP, VA	436	1.4%
McLean CDP, VA	398	1.3%
Jefferson CDP, VA	393	1.3%
Burke CDP, VA	391	1.3%
Dale City CDP, VA	388	1.2%
Chantilly CDP, VA	365	1.2%
All Other Locations	18,309	58.6%

<u>Jobs in Counties Where Workers Live</u>	2008	
	Count	Share
Fairfax County, VA	8,387	26.8%
Arlington County, VA	6,033	19.3%
District of Columbia, DC	2,200	7.0%
Prince George's County, MD	1,945	6.2%
Prince William County, VA	1,843	5.9%
Alexandria city, VA	1,799	5.8%
Montgomery County, MD	1,563	5.0%
Loudoun County, VA	1,401	4.5%
Chesterfield County, VA	412	1.3%
Virginia Beach city, VA	285	0.9%
All Other Locations	5,392	17.2%

<u>Jobs in States Where Workers Live</u>	2008	
	Count	Share
Virginia	23,990	76.7%
Maryland	4,600	14.7%
District of Columbia	2,200	7.0%
Pennsylvania	109	0.3%
West Virginia	105	0.3%
All Other Locations	256	0.8%