

The background of the slide features a large, light blue watermark of the Seal of the State of Illinois. The seal is circular and contains an eagle with wings spread, perched on a rock. The text "SEAL OF THE STATE OF ILLINOIS" is written around the top inner edge, and "AUG. 26TH 1818" is written around the bottom inner edge.

Economic Sustainability: Uses of LED in Illinois

George W. Putnam

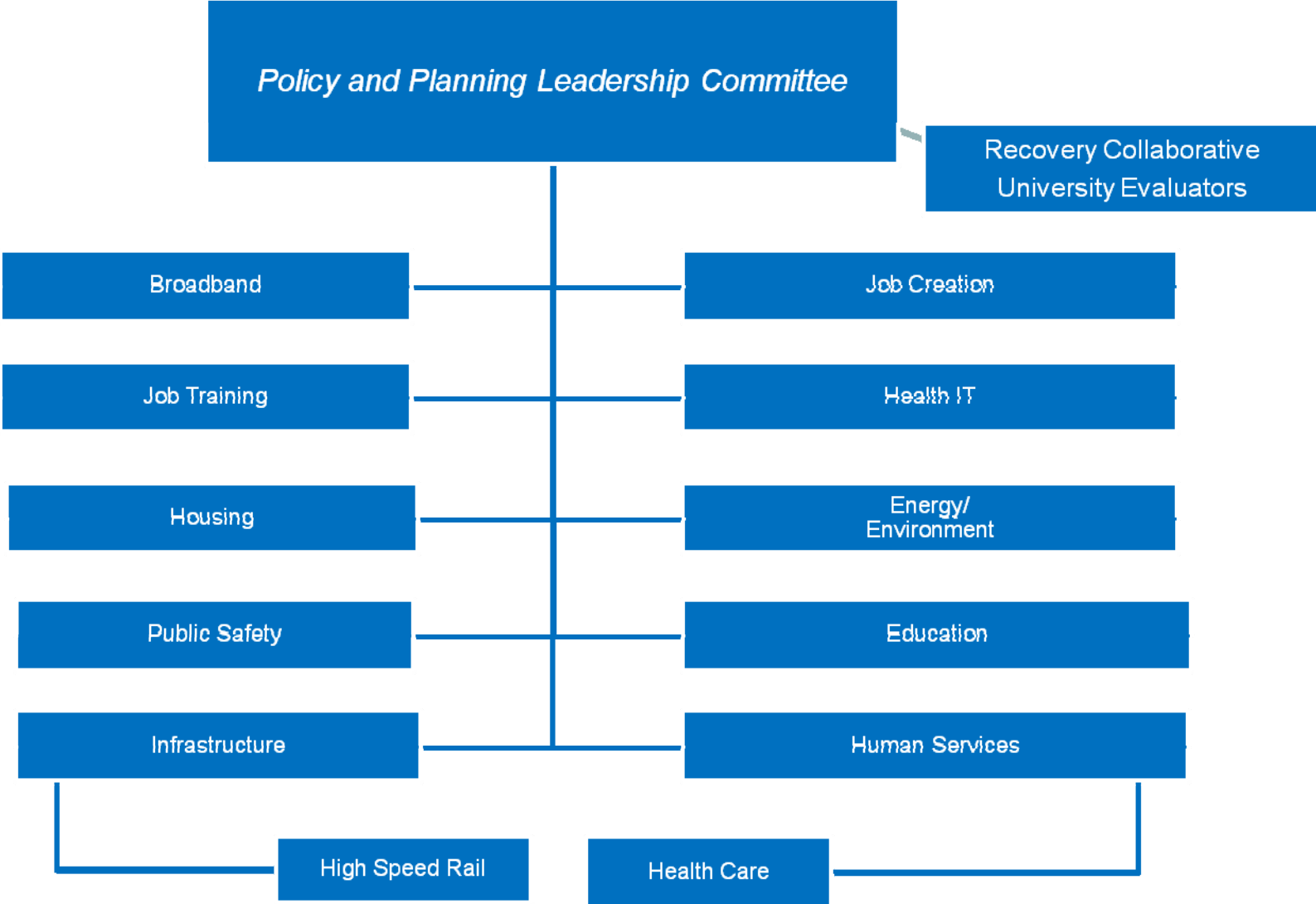
2010 Annual Conference

Local Employment Dynamics (LED)

March 10-12, 2010

The
Illinois Department
of Employment Security
www.ides.state.il.us

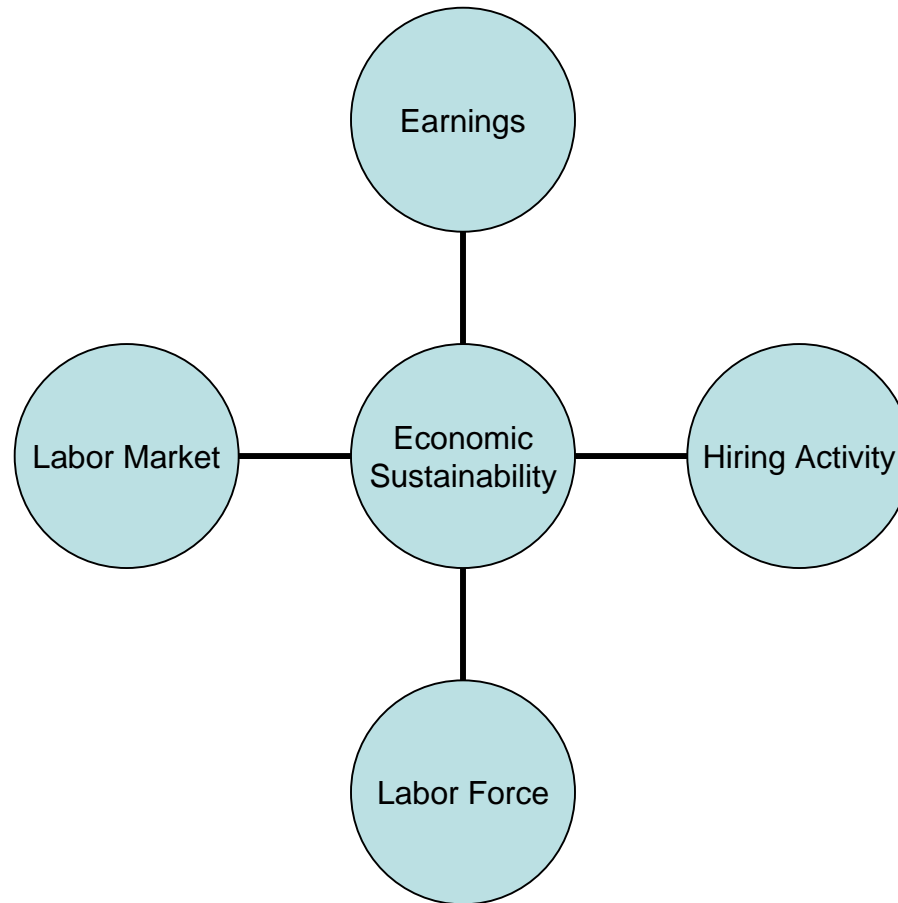
Illinois ARRA Organizational Chart



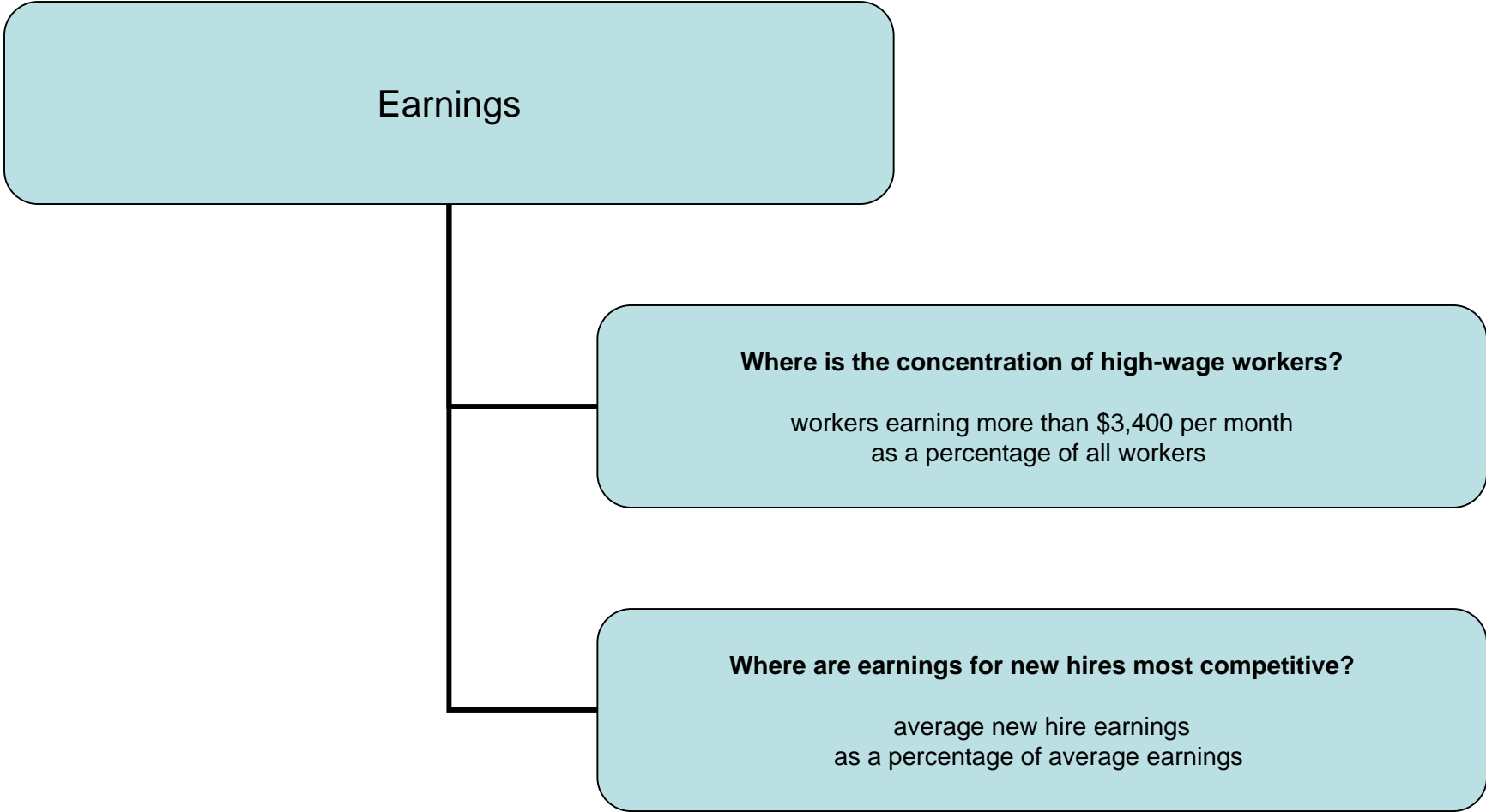
Economic Sustainability: Data Considerations

- Comprehensive measures
- Comparison across geography
- Comparison across time
- Currency of information

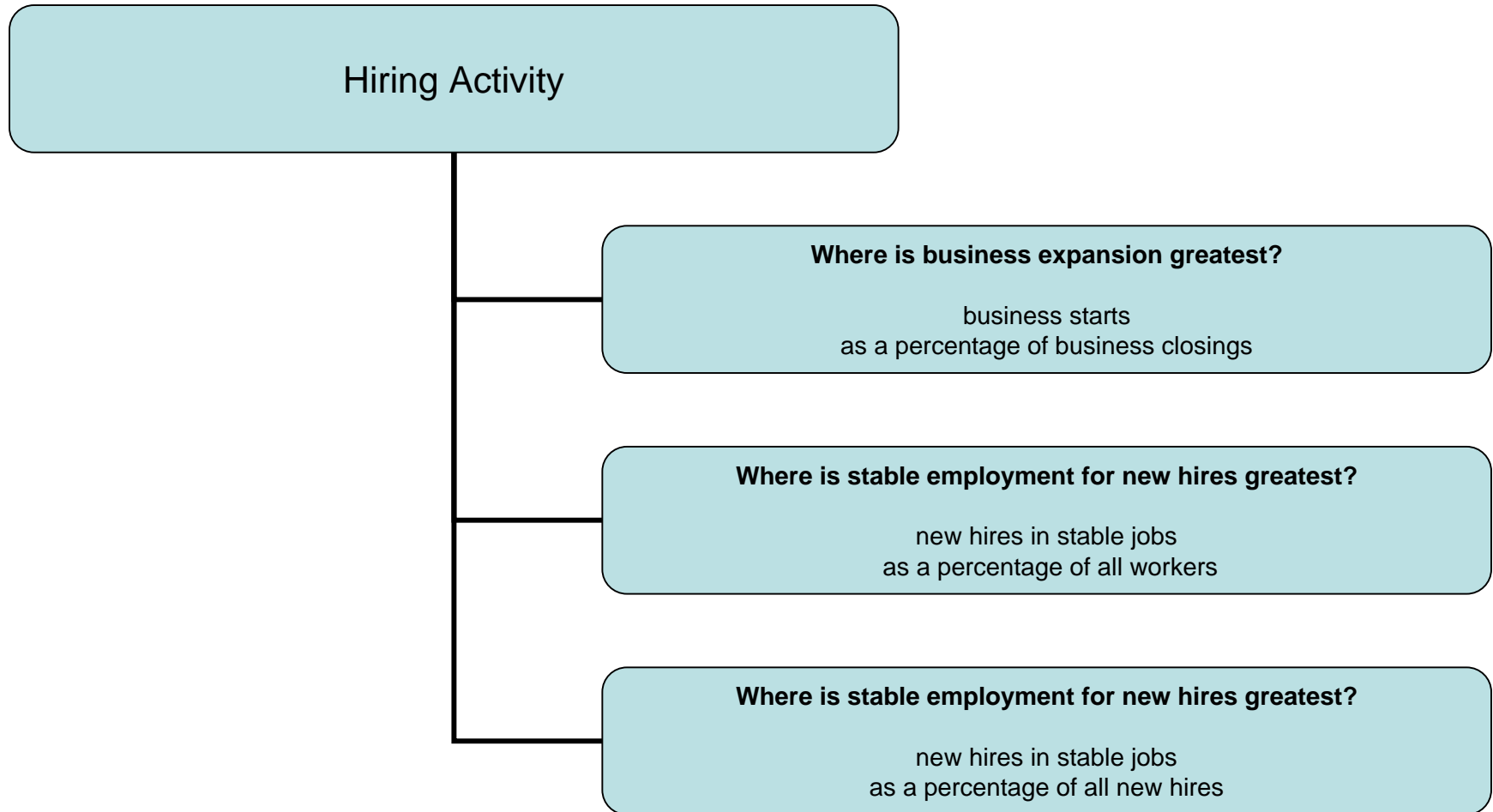
Economic Sustainability among Illinois Counties: earnings, hiring activity, labor force characteristics, labor market conditions



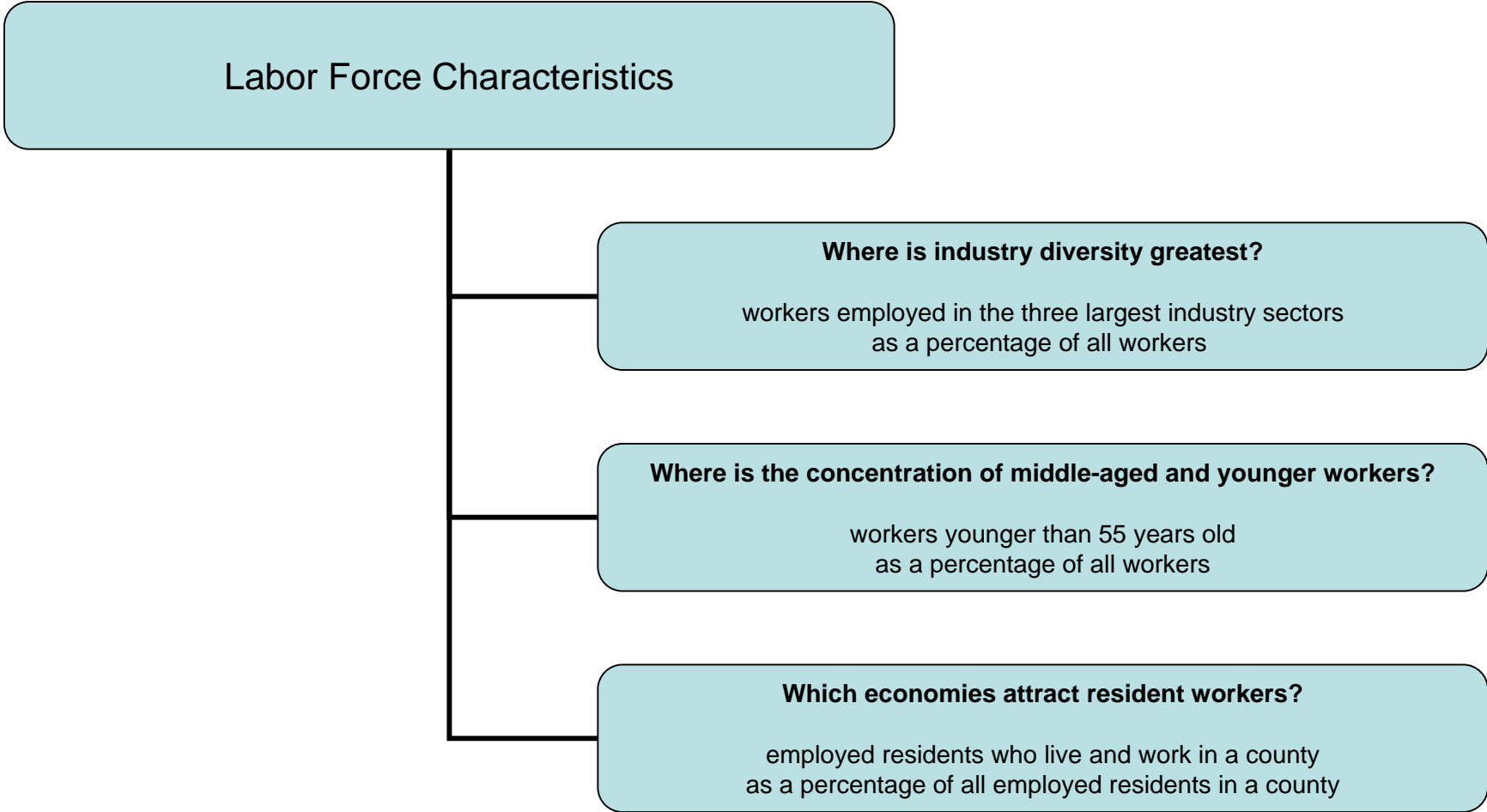
Which counties offer the most competitive wage?



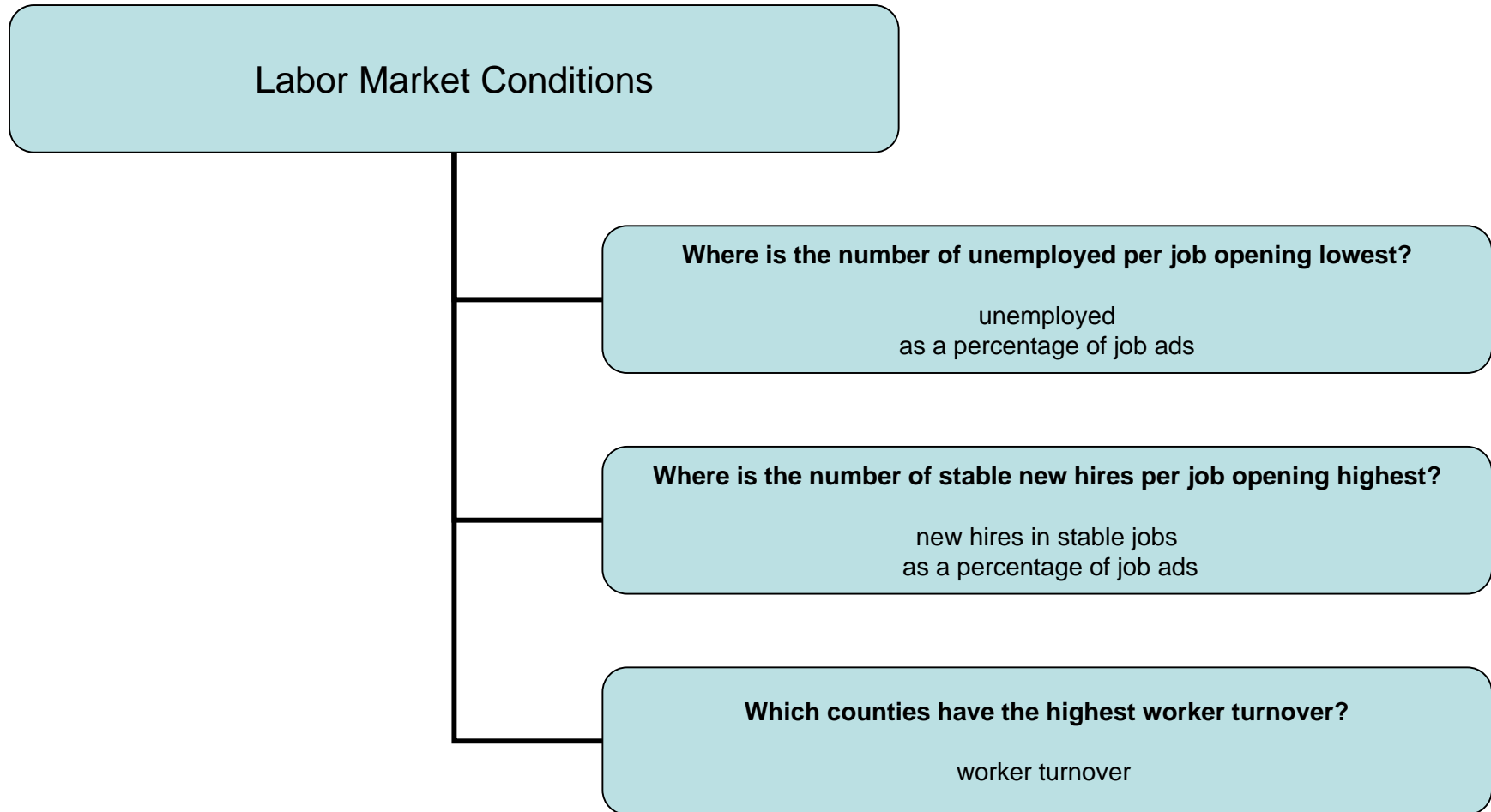
Which counties foster business growth and stable employment for new hires?



Which counties have diverse employment opportunities and workers with current skill sets?



Which counties exhibit favorable employment opportunities?

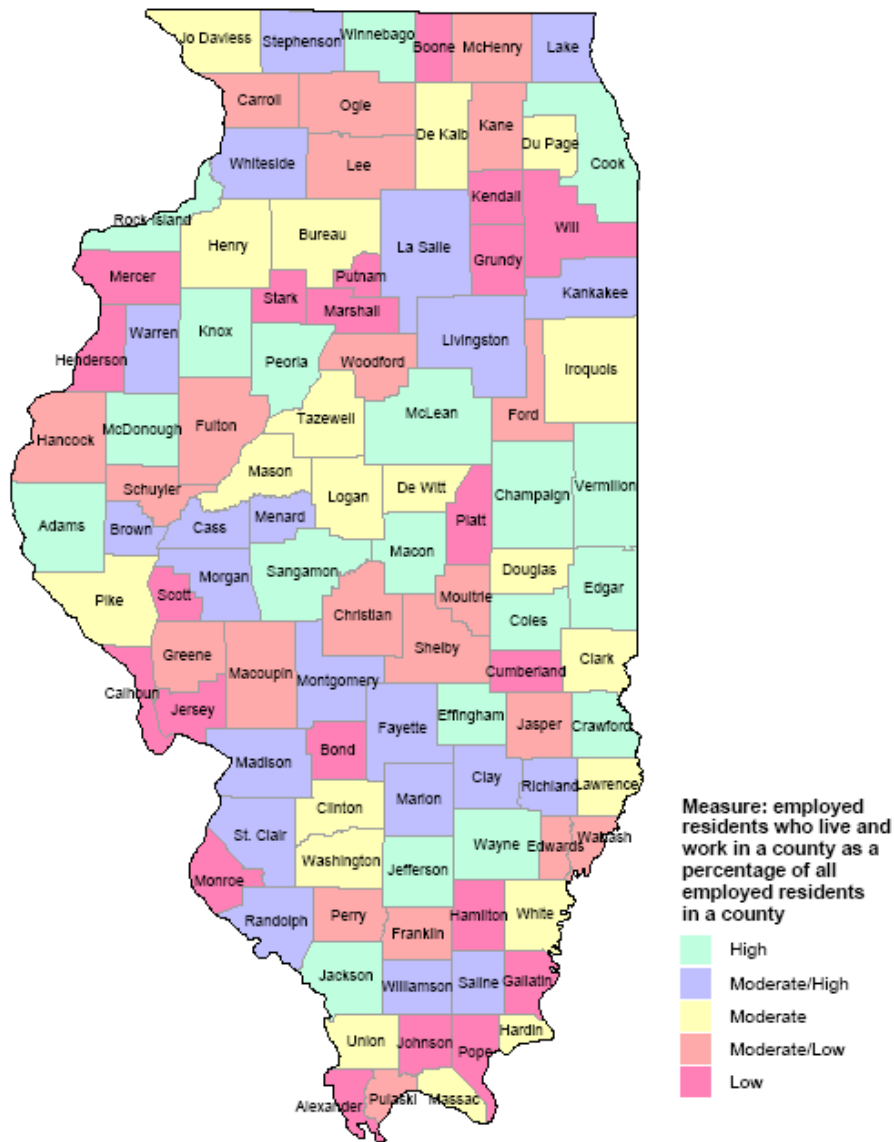


Economic Sustainability among Illinois Counties:

Snapshot of labor force
and earnings

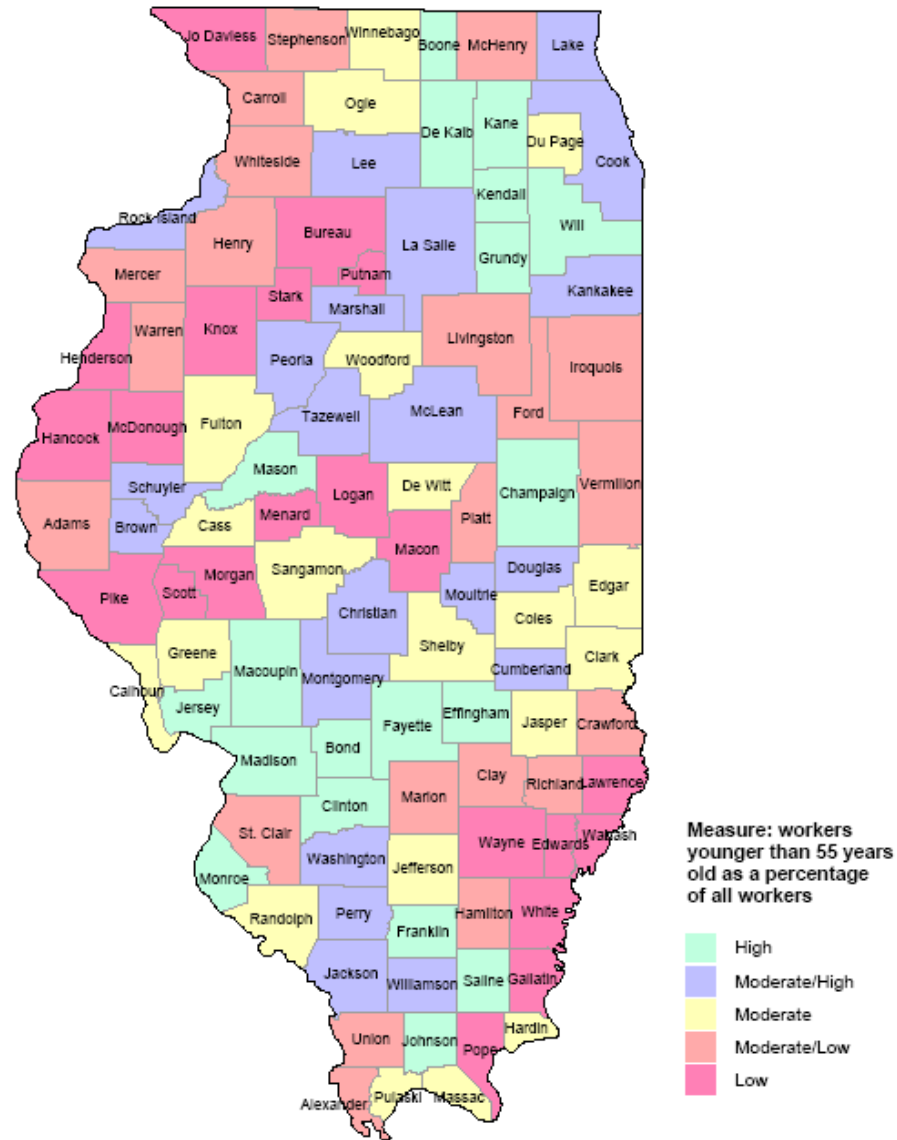
Which counties attract resident workers?

Answer: counties clustered in the central and southern regions



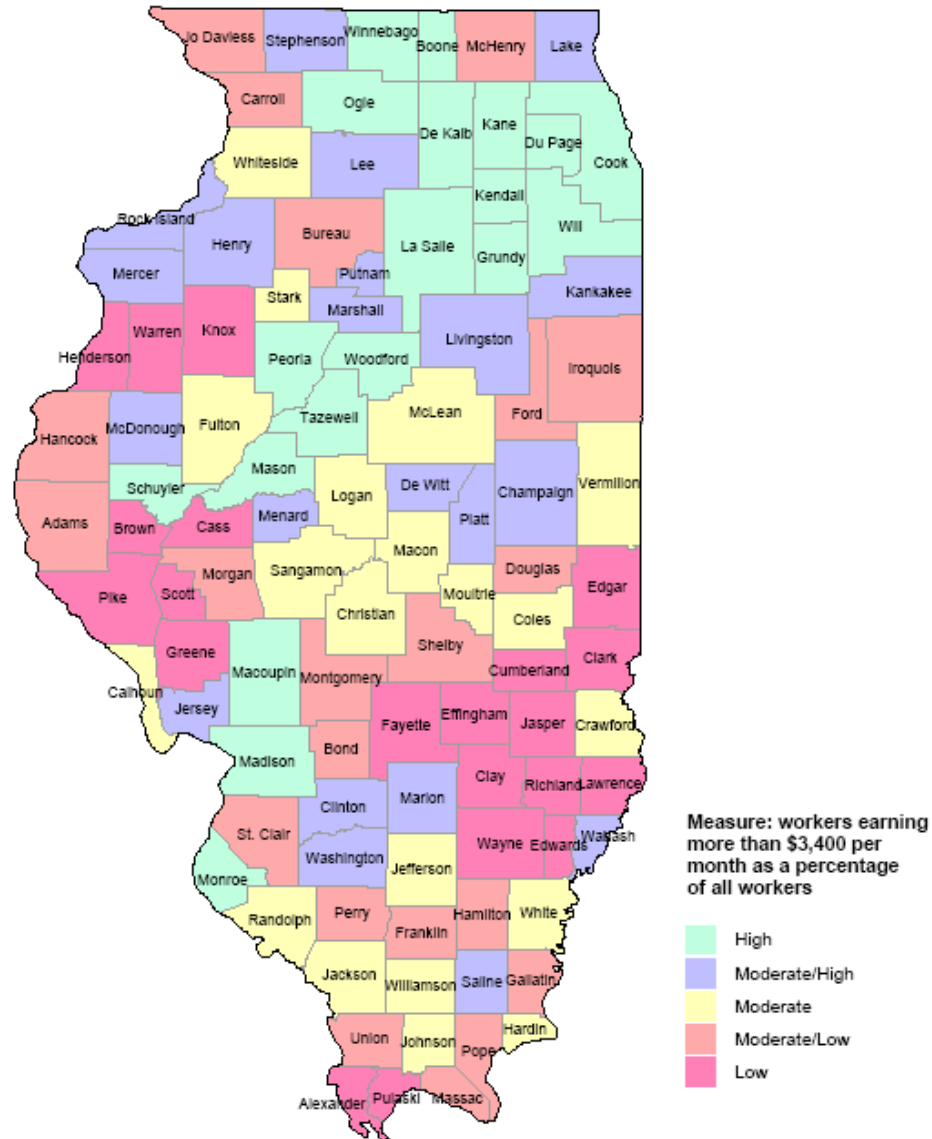
Which counties have workers with current skill sets?

Answer: counties clustered in the northeast, central and southwest regions



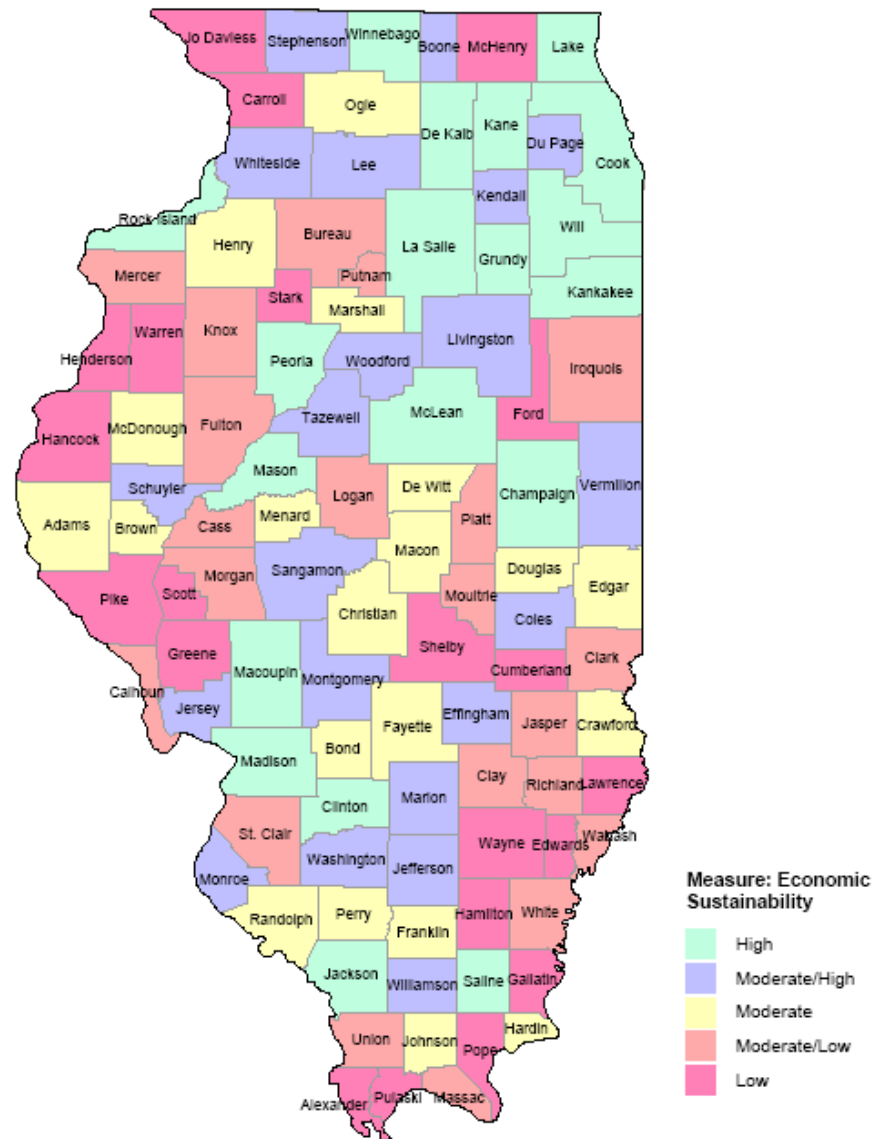
Which counties offer the most competitive wage?

Answer: counties clustered in the northern and central regions



Which counties exhibit the highest likelihood of economic sustainability?

Answer: counties clustered in the northeast and southwest regions

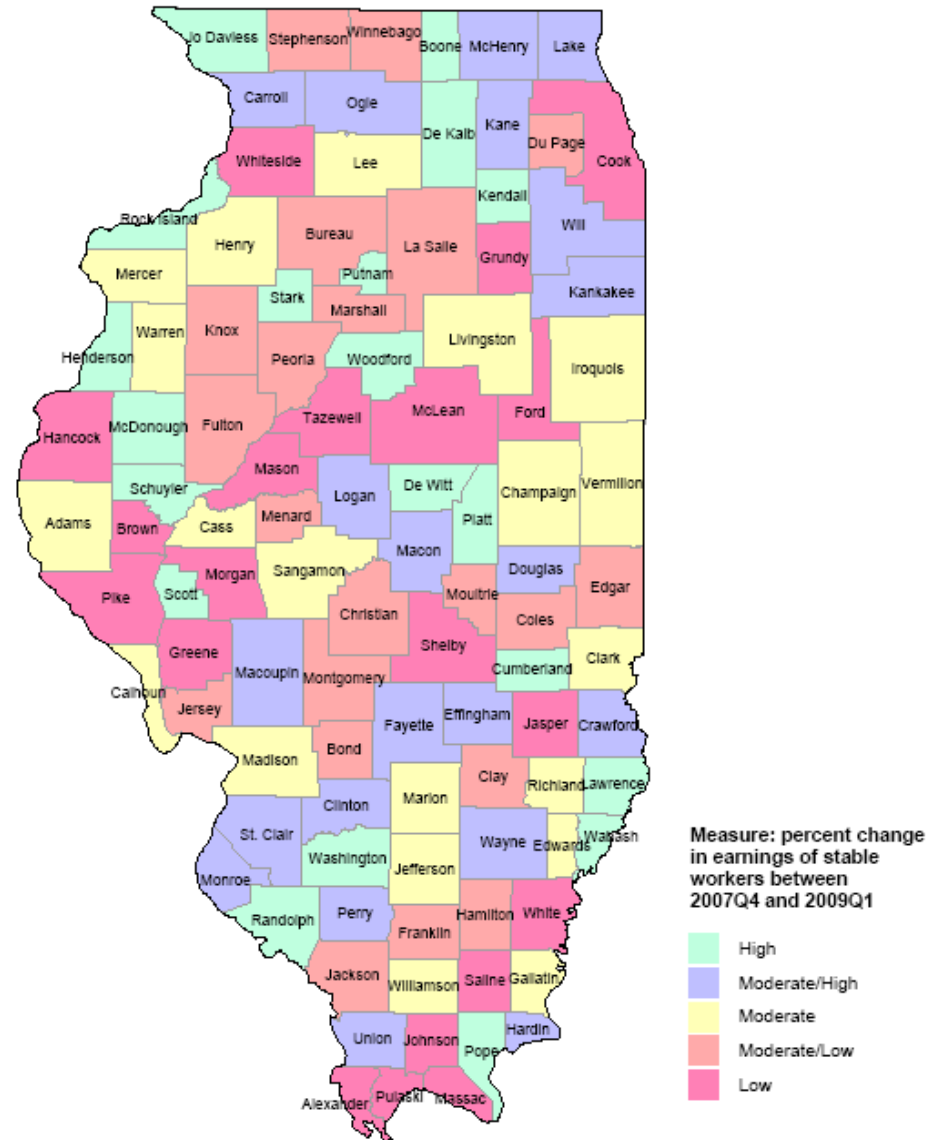


Economic Sustainability among Illinois Counties:

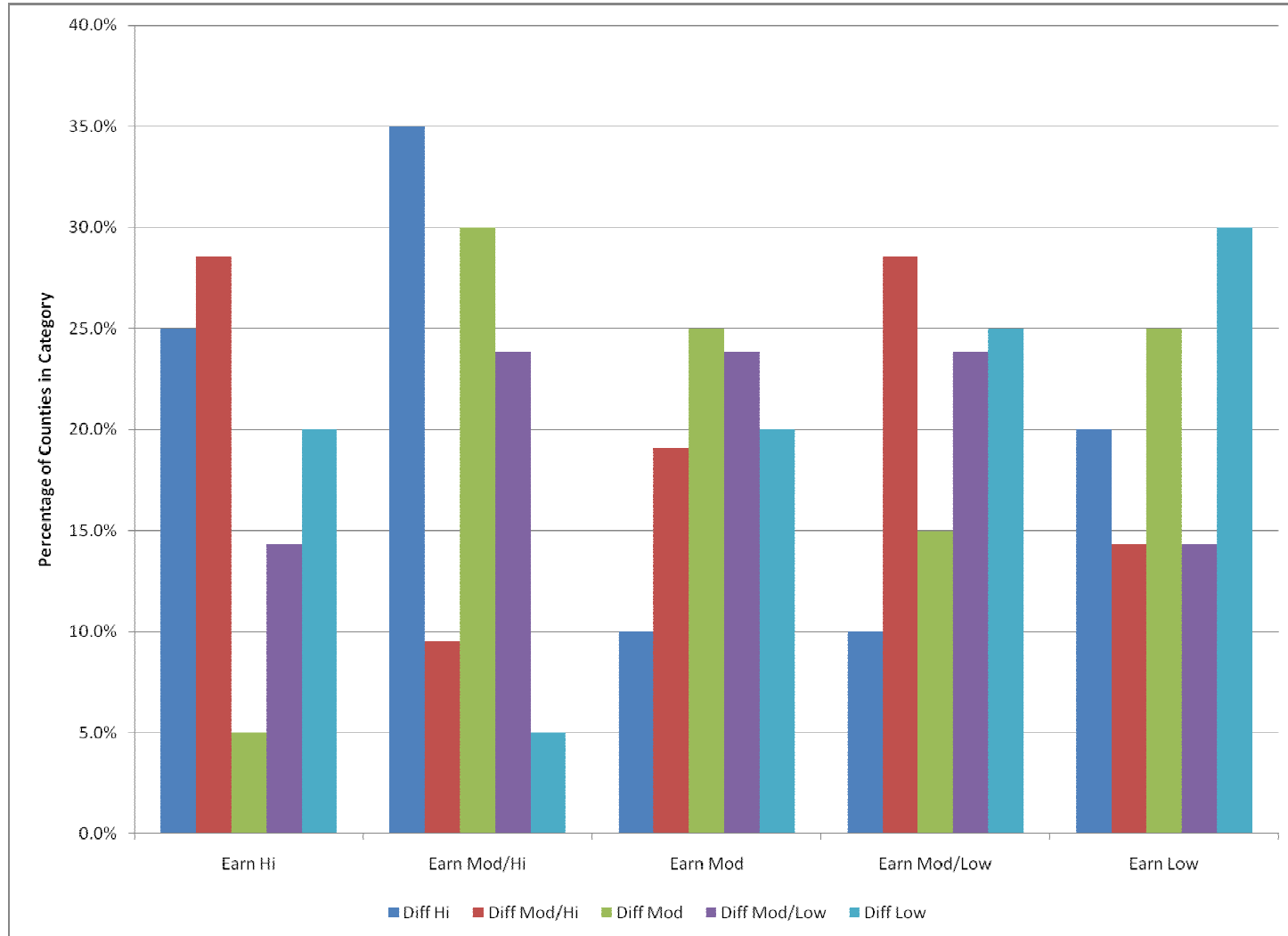
The geography of earnings
declines since the downturn

Which counties had the sharpest earnings drop since the downturn?

Answer: counties clustered in the north, west-central and southern regions

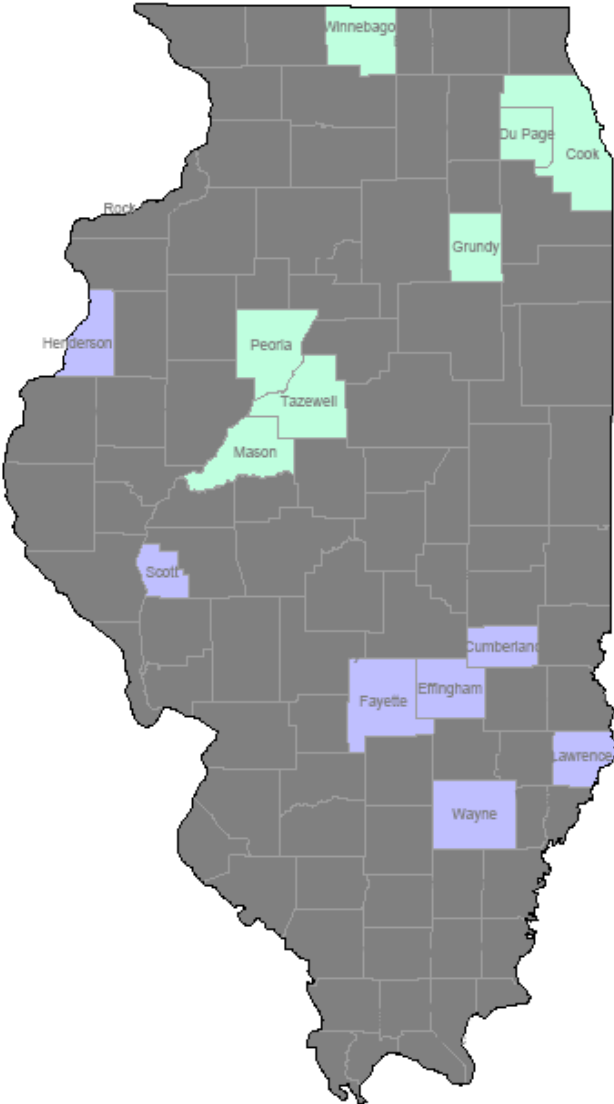


Average earnings declines were sharpest among the higher earning counties



High earnings counties and least earnings difference? central, northeast

Low earnings counties and greatest earnings difference? southeast



Measure:
Earnings- workers
earning more than \$3,400
per month as a percentage
of all workers

Earnings difference-
percent change in earnings
of stable workers between
2007Q4 and 2009Q1

- Earn High, Diff Low
- Earn Low, Diff High

New hire earnings declines were sharpest among counties with the largest drop in average earnings

