

# Data needs during emergency response, recovery and future development

## Lessons from New Orleans

Presented by:

**Allison Plyer**

Deputy Director

[www.gnocdc.org](http://www.gnocdc.org)

A stylized graphic featuring a large, light purple crescent moon on the left side. To its right, a series of blue dots of varying sizes are arranged in a loose, circular pattern, resembling a spiral or a cluster of stars. The text "Emergency Response" is centered within this graphic.

# Emergency Response



GREATER  
NEW ORLEANS



**FAIR**  
**HOUSING**  
ACTION CENTER



GREATER NEW ORLEANS  
AFTERSCHOOL  
PARTNERSHIP



Literacy  
Alliance



A product of Greater New Orleans Nonprofit Knowledge Works

Since 2001, this website has been the most widely used source for information about New Orleans' 73 neighborhoods. We've got easy-to-use Census 2000 data-including households without cars, poverty, age of housing stock and other demographics, as well as historical snapshots for every New Orleans neighborhood.

**For New Orleans neighborhoods, click on an area below...** (Scroll down to find data for the GNO 10-Parish area.)



## Updates for Katrina

Our staff (from our various locations) are still working hard on a daily basis to connect you with up-to-date, reliable information about New Orleans neighborhoods.

### [Status of flooding & infrastructure](#)

Status of electricity, water, hospitals, re-entry guidelines

### [Looking for New Orleans evacuees?](#)

### Maps of New Orleans:

[Poverty Map](#) (PDF)

[Neighborhood Map](#) (PDF)

[Racial segregation in New Orleans](#)

Elevation Map [2.7MB PDF](#) or [HTML](#) for slower connections



### 'Numbers Talk' Newsletter

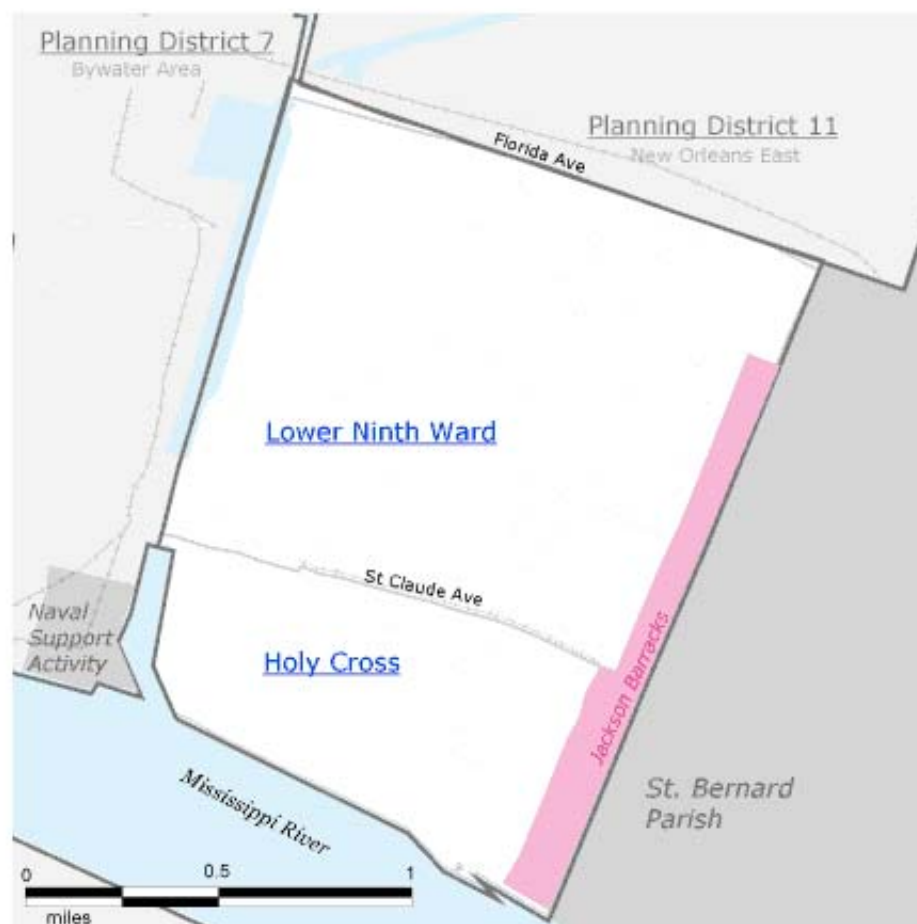
To make sure you're informed of all the latest releases of information, check back often, and sign up for our e-mail newsletter.

Your e-mail address:

[Sign Up!](#)

## Lower 9th Ward District (Planning District 8)

Click on a neighborhood below to see data about it...



Map sources: NO City Planning, MapInfo

© 2002 GNO Community Data Center <www.gnocdc.org>

### The Lower 9th Ward

This whole area is commonly referred to as the "Lower 9th Ward," but it's worth keeping in mind that it contains both a neighborhood of that name as well as a second neighborhood - Holy Cross.

### How is my neighborhood defined?

#### Articles on writing needs assessments:

[Using neighborhood data: a case study](#) In this fictional (but realistic) story, see the process that one might go through in creating a persuasive Statement of Need for a grant proposal.

[Numbers talk... and at the neighborhood level they may talk even louder!](#) By using data about your specific neighborhood compared to the surrounding area, you can make a compelling case for funding.

[What data do funders want to see in Problem Statements?](#) Quick tips on what types of numbers are helpful and not helpful for

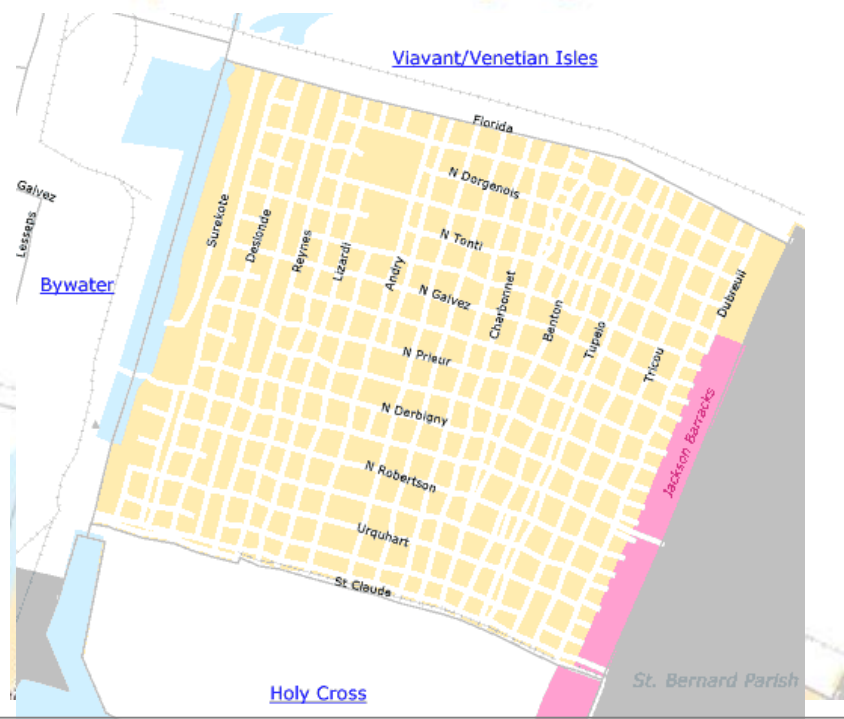


**Data Tables:**[\(Is this data current?\)](#)[People & Household Characteristics](#)[Housing & Housing Costs](#)[Income & Poverty](#)[Transportation](#)[Employment](#)[Educational Attainment](#)[Immigration & Language](#)[Disabilities](#)[Neighborhood Characteristics](#)[Give us your feedback...](#)

## Lower Ninth Ward Neighborhood

“The Lower Ninth Ward consists of two distinct neighborhoods, [Holy Cross](#) and this neighborhood, the Lower Ninth Ward, called by some, *The Lower 9*. The neighborhood is rich with small businesses, barber and beauty shops, corner stores, eateries, day care centers, as well as public schools and some say, far too many churches. It has a resilient history of survival and activism.” [Read more in the [Neighborhood Snapshot](#)]

Street map with links to nearby neighborhoods:





[Home](#) » [Orleans Parish](#) » [Lower Ninth Ward District](#) » [Lower Ninth Ward](#) » [Data Tables](#)

## Lower Ninth Ward Neighborhood: People & Household Characteristics

Data Tables: **People & Household Characteristics**, [Housing & Housing Costs](#), [Income & Poverty](#), [Transportation](#), [Employment](#), [Educational Attainment](#), [Immigration & Language](#), [Disabilities](#), [Neighborhood Characteristics](#)

Finding the information you need within long rows of numbers is a tricky task, even under the best of conditions. When the terms used by the U.S. Census are different from everyday usage, the task becomes even harder.

For this reason, we've added a variety of side notes to these data tables, as well as links to the technical definition for each indicator. Our aim is to explain definitions that are sometimes misleading, and also to point you to additional information that you may find useful for program planning and grantwriting.

[Definitions and source links](#)

[E-mail a friend](#)

	Lower Ninth Ward	Orleans Parish	Louisiana	United States
<b>Total numbers (2000)</b>				
Population	14,008	484,674	4,468,976	281,421,906
Total households	4,820	188,251	1,656,053	105,480,101
Family households	3,467	112,977	1,156,438	71,787,347

Source Citation: U.S. Census Bureau. *Census 2000 Full-count Characteristics (SF1)*. From a compilation by the GNO Community Data Center. <<http://www.gnocdc.org>>

**What's the difference between households and families?** The Census definition of *familu* is people living together who are "related... by

## St. Roch Neig Attainment

Data Tables: [People & H](#)  
[Transportation](#), [Employment](#)  
[Neighborhood Characteris](#)

### Educational att

[Definitions and source l](#)

#### Level of schooling (200

Total population 18 yea

Less than 9th grade

9th to 12th grade, n

High school diploma

Some college or Asso

Bachelor's degree to

#### Teens without high scl (2000)

Total population 16-19

% not enrolled in sch

high school graduate

**Source Citation:** U.S. Census B  
Community Data Center. <<http://www.gnocdc.org>>

#### Enrollment in s

## Household Char

**Which number d**  
household character  
recommend you tak  
view data on what t  
Note, we have chose  
of the Census' narro

[Definitions and source l](#)

#### Households by type (20

Total households

Female householder (no  
present) with children u

Male householder (no w  
with children under 18

Married-couple family, v  
under 18

Nonfamily households, v  
under 18

Households with no peo  
years

#### Children in household:

Population under 18 yea  
households

Children living as hear

<http://www.gnocdc.org/orleans/7/24/t> Go

### Grandparents as caregivers

Recently, there has been a lot of interest in understanding the role of grandparents as caregivers. Census 2000 data focuses on the number of grandparents who have responsibility for a grandchild (or grandchildren) in the household they live in, but does not give us information on the number of children who have grandparents as caregivers.

[Definitions and source links](#)

	St. Roch	Orleans Parish	Louisiana	United States
<b>Grandparents as caregivers (2000)</b>				
Total grandparents living in households with grandchildren under 18	708	17,338	122,240	5,771,671
Grandparent responsible for grandchildren under 18	53.4%	54.7%	54.9%	42.0%
Grandparent not responsible for own grandchildren under 18	46.6%	45.3%	45.1%	58.0%

**Source Citation:** U.S. Census Bureau. *Census 2000 Sample Characteristics (SF3)*. From a compilation by the GNO  
Community Data Center. <<http://www.gnocdc.org>>

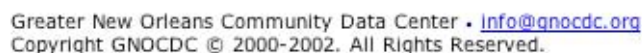
#### Find related data...

For data on **houses people live in**, whether they  
**rent or own**, etc., visit the [Housing and Housing  
Costs](#) data page.

You'll find data on **family income** and **people  
living in poverty**, in the [Income & Poverty](#) data  
tables.

Go to the [Educational Attainment](#) page to find








Community Data Center: Technical Assistance - Mozilla Firefox

File Edit View Go Bookmarks Tools Help

http://www.gnocdc.org/tech-assist.cfm Go

Greater New Orleans  
COMMUNITY Data CENTER

[Home](#) » **Ask Allison**



## Ask Allison

Hi, I'm Allison Plyer, Senior Consultant with the Community Data Center. We work with nonprofit clients to use data to support their grantwriting, planning and advocacy efforts.

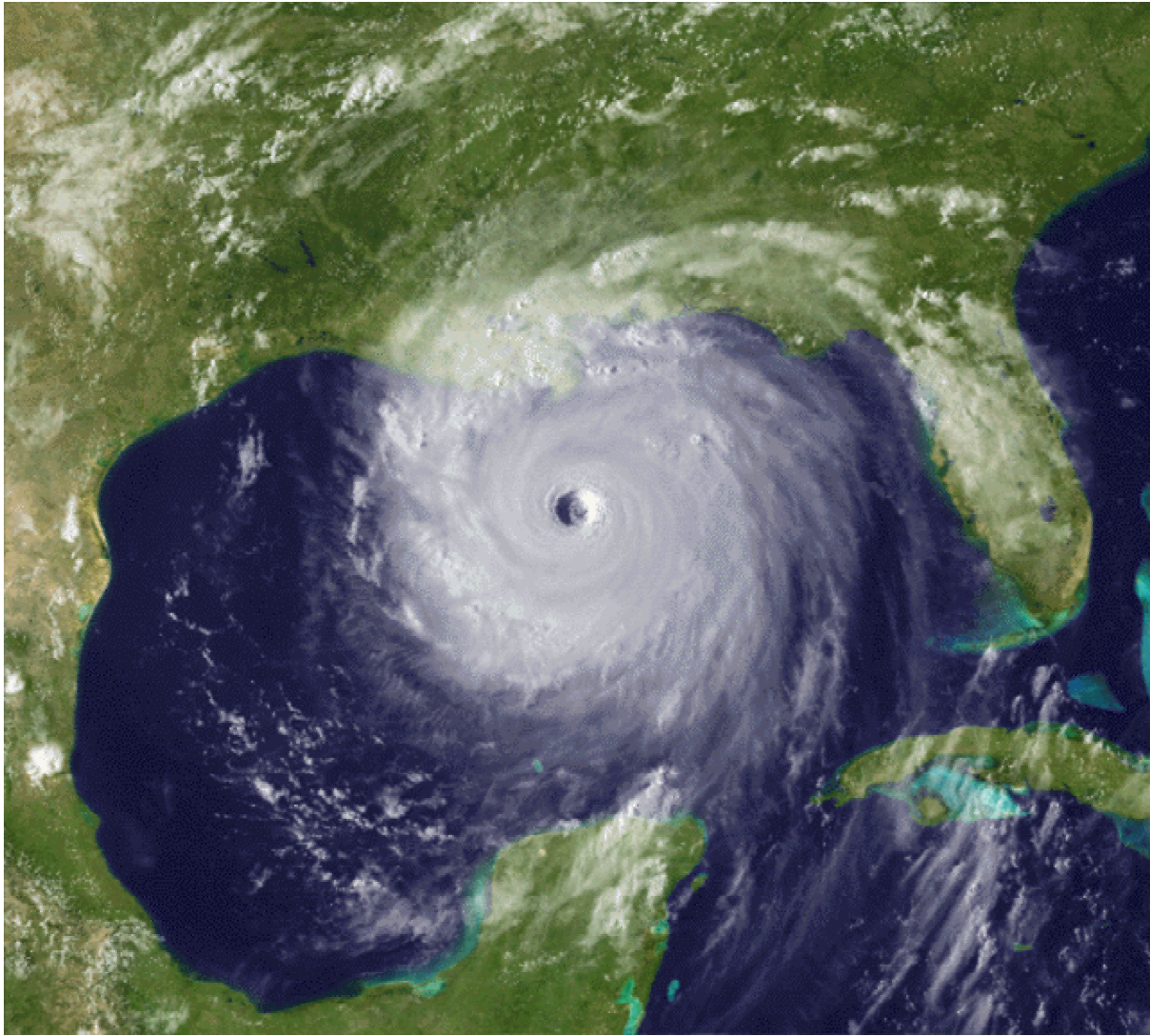
We know that using data can be frustrating at times. We're here to help!

We've tried to create a web site that makes getting local data really easy. But there's a whole world of data out there and we've published only a small portion. If after reviewing our website, you haven't found what you're looking for, this is the page to be on.

If you are a New Orleans area nonprofit organization, you can receive one hour of free help from us. (If it will take longer, we can work to negotiate something.)

Please start by submitting the following information. I'll contact you within one business day of receiving your request. Once you make a request, my colleagues and I will work to help you find the best data to meet your needs. This process can take up to two weeks.



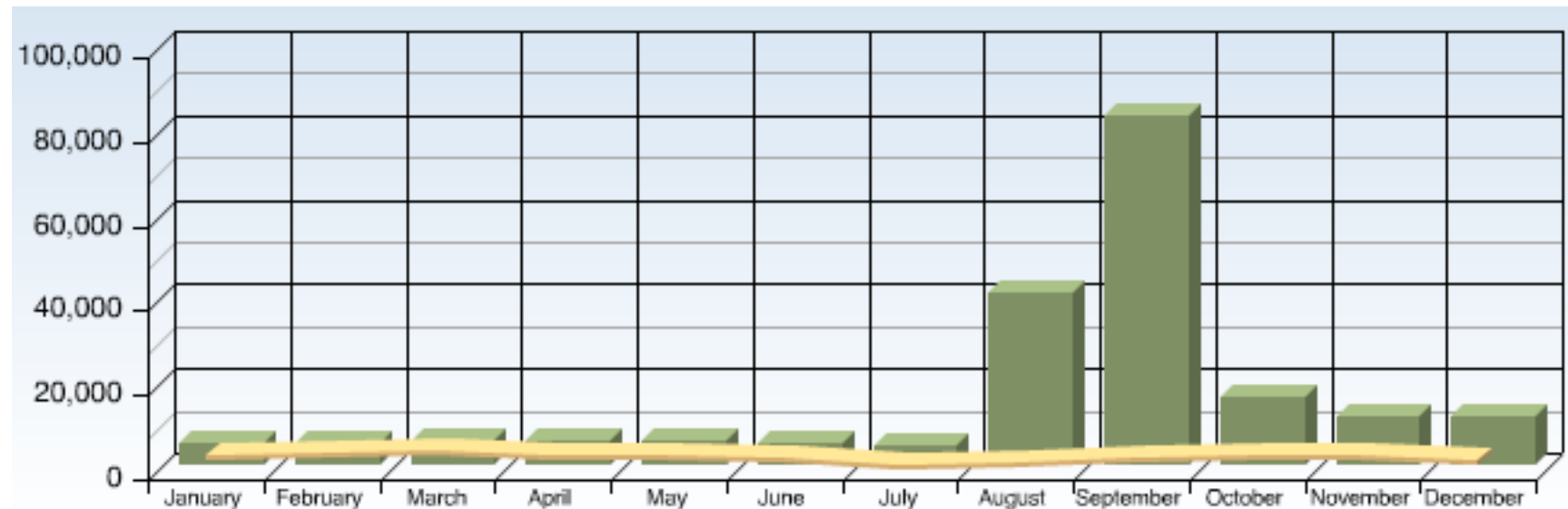








# 2005 visits to gnocdc.org



Baseline 5,000 visits/month

40,000  
visits

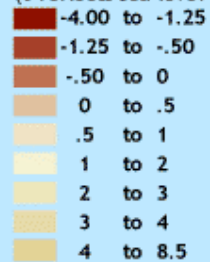
80,000  
visits

In 2006:  
15,000  
visits/month

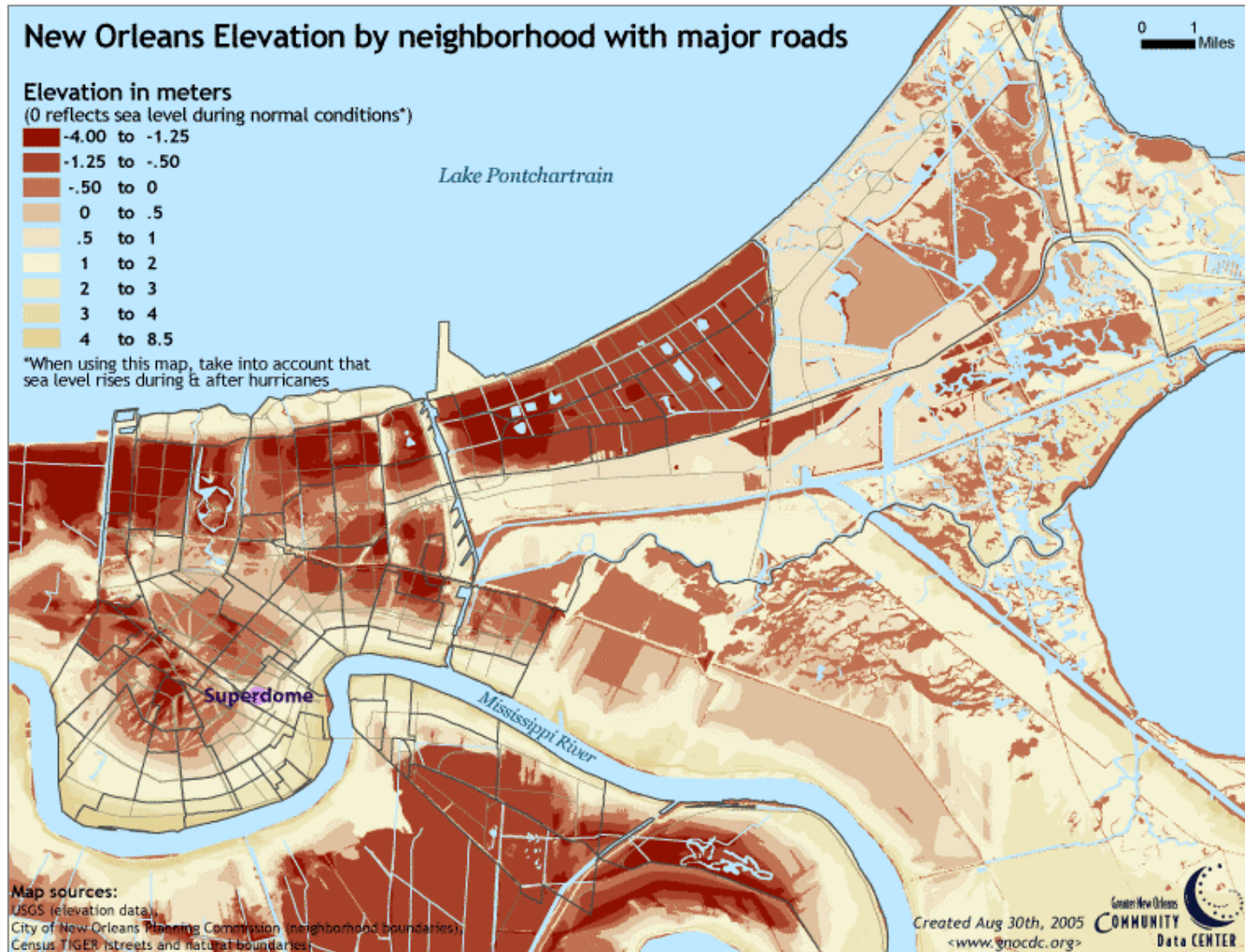
## New Orleans Elevation by neighborhood with major roads

### Elevation in meters

(0 reflects sea level during normal conditions\*)



\*When using this map, take into account that sea level rises during & after hurricanes



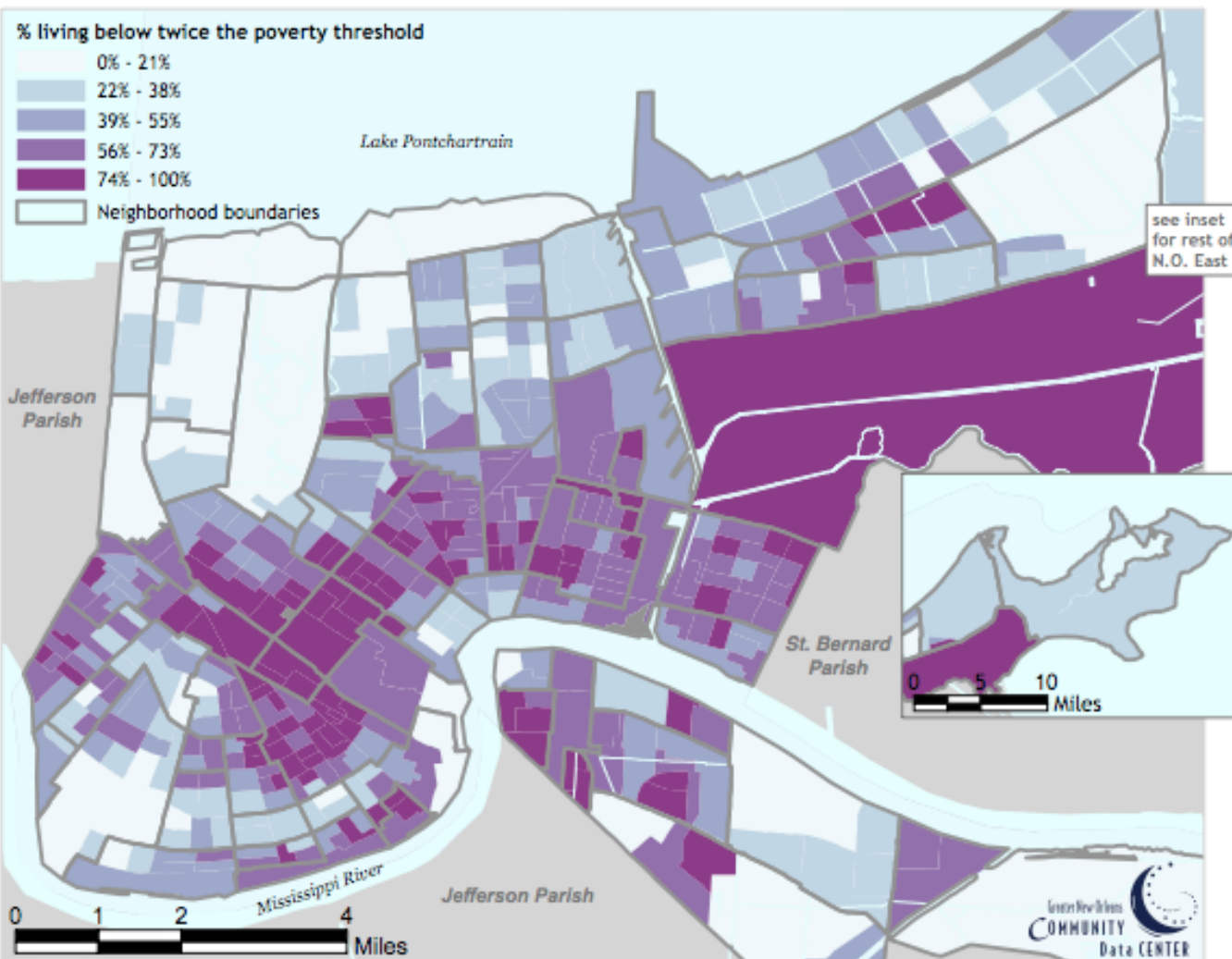
#### Map sources:

USGS (elevation data)  
City of New Orleans Planning Commission (neighborhood boundaries)  
Census TIGER (streets and natural boundaries)

Created Aug 30th, 2005  
<[www.gnocdc.org](http://www.gnocdc.org)>



## Percent of people living below twice the poverty threshold by Census block group in Orleans Parish



Map sources:  
USGS (elevation data)  
City of New Orleans Planning Commission (neighborhood boundaries)  
Census TIGER (streets and natural boundaries)

Created Aug 30th, 2005  
<[www.gnocdc.org](http://www.gnocdc.org)>



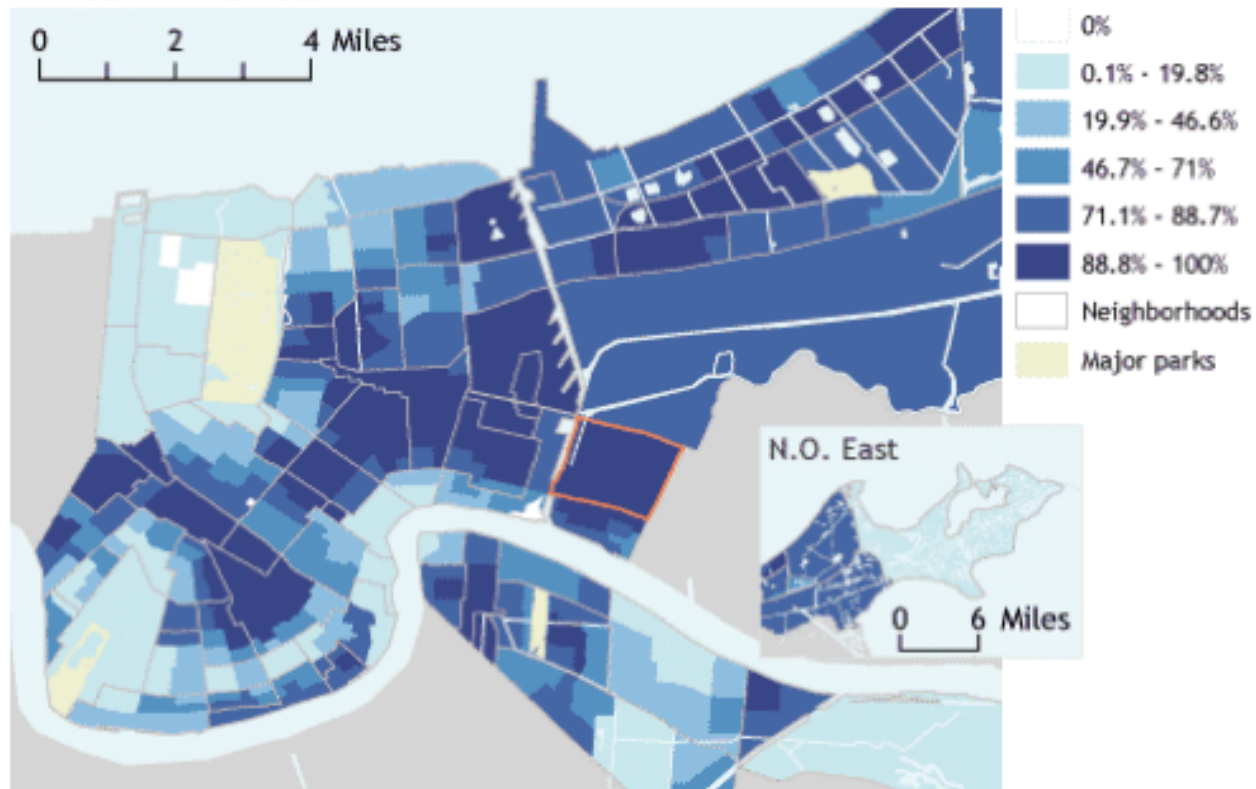


# Percent African American, White, Asian and Hispanic in Census block groups across Orleans Parish (2000)

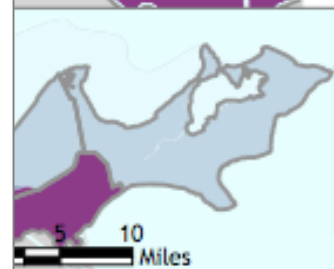
*Lower Ninth Ward neighborhood highlighted*

## African American

0 2 4 Miles



Threshold



Feb 3, 2004 <[www.gnocdc.org](http://www.gnocdc.org)>

Map sources:  
USGS (elevation data)  
City of New Orleans Planning Commission (neighborhood boundaries)  
Census TIGER (streets and natural boundaries)

Created Aug 30th, 2005  
<[www.gnocdc.org](http://www.gnocdc.org)>







A product of Greater New Orleans Nonprofit Knowledge Works

Since 2001, this website has been the most widely used source for information about New Orleans' 73 neighborhoods. We've got easy-to-use Census 2000 data-including households without cars, poverty, age of housing stock and other demographics, as well as historical snapshots for every New Orleans neighborhood.

For New Orleans neighborhoods, click on an area below... (Scroll down to find data for the GNO 10-Parish area.)



## Updates for Katrina

Our staff (from our various locations) are still working hard on a daily basis to connect you with up-to-date, reliable information about New Orleans neighborhoods.

### Maps of New Orleans:

[Poverty Map](#) (PDF)

[Neighborhood Map](#) (PDF)

[Racial segregation in New Orleans](#)

[Elevation Map-2.7MB PDF](#) or [HTML](#) for slower connections

## 'Numbers Talk' Newsletter

To make sure you're informed of all the latest releases of information, check back often, and sign up for our e-mail newsletter.

Your e-mail address:

[Sign Up!](#)

(We respect your privacy and will not use your e-mail for any purpose other than sending you the newsletter.)

## Democratizing Data

Overcoming injustices, obstacles and frustrations, African

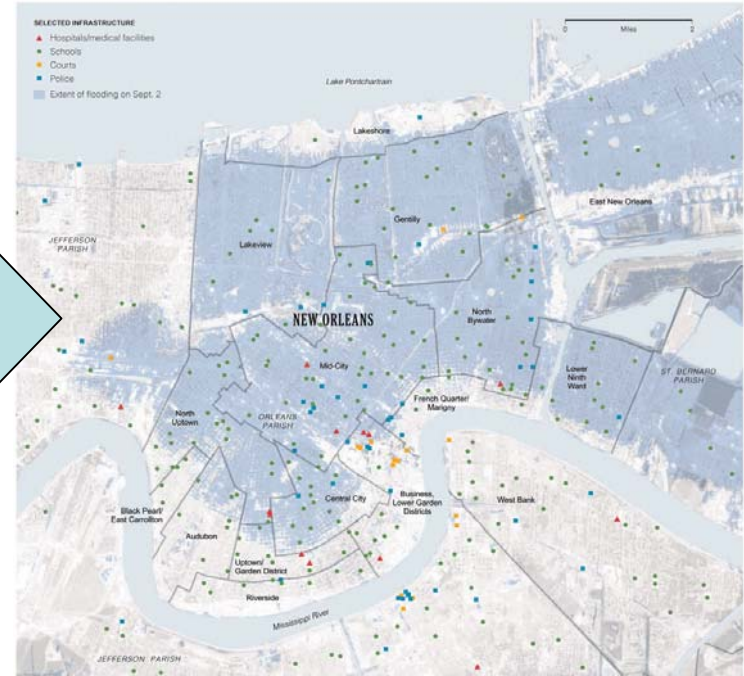
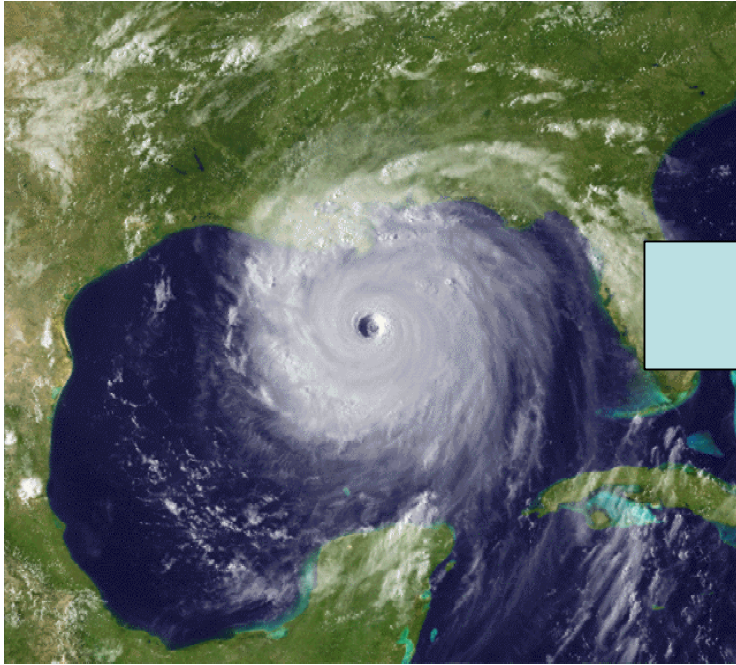


see inset for rest of N.O. East

Greater New Orleans  
COMMUNITY Data CENTER  
<www.gnocdc.org>

Created Aug 30th, 2005  
<www.gnocdc.org>

Greater New Orleans  
COMMUNITY Data CENTER





The Neighborhoods That Were Hit Hard And Those That Weren't

Rebuilding New Orleans will take years or decades and cost untold sums. While large swaths of the city may have to be bulldozed, a strip of unflooded land containing hospitals, government buildings, schools, historic homes and tourism sites suffered minimal damage.

The people who lived in the areas of New Orleans that were still flooded days after Hurricane Katrina struck were more likely to be black, have more children, earn less money and be less educated than those in the rest of the city. The flooded areas were home to about 346,000 people — 71 percent of the city's population — and contained more than two-thirds of the city's homes.

The map shows the extent of the flooding on Sept. 2, after the water level had stopped rising, but several days before crews were able to plug breaches in levees and start pumping water out.

DATA FROM 2000 U.S. CENSUS

Areas with significant flooding	Population	Areas with little or no flooding
346,000		138,000

Race and ethnicity

76%	BLACK	43%
18	WHITE	49
3	HISPANIC	4
2	ASIAN	2
1	OTHER	2

Age

PERCENTAGE OF RESIDENTS THAT WERE:

28%	UNDER 18	22%
11%	OLDER THAN 65	12%

Single-parent families

29%	PERCENTAGE OF FAMILIES WITH SINGLE PARENTS	21%
-----	--	-----

Education

72%	HIGH SCHOOL GRADUATE	82%
21%	BACHELOR'S DEGREE OR HIGHER	38%

Income

\$25,759	MEDIAN HOUSEHOLD INCOME (1999)	\$31,455
----------	--------------------------------	----------

\$4.9	TOTAL AMOUNT EARNED BY ALL RESIDENTS	\$3.2
29%	POVERTY RATE	25%

PERCENTAGE OF HOUSEHOLDS WITH INCOMES OF:

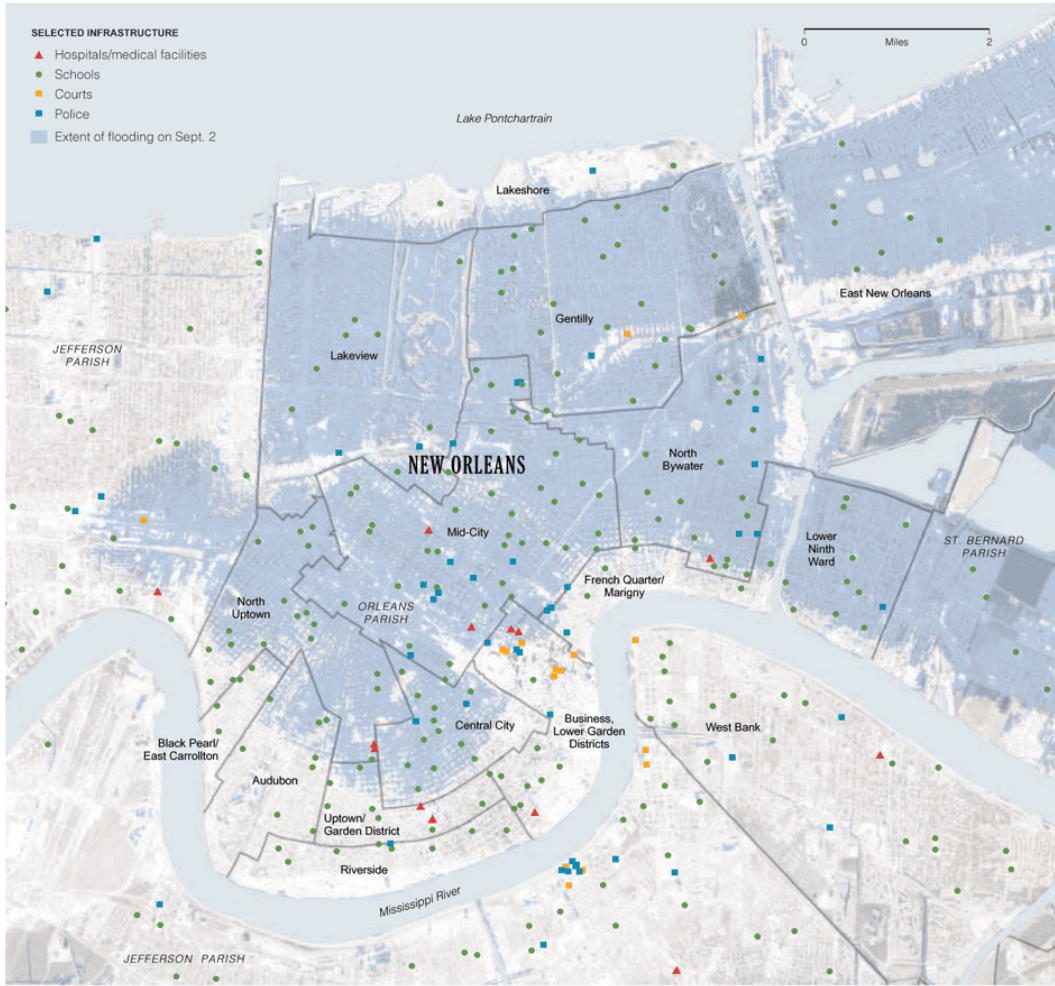
56%	LESS THAN \$30,000	48%
6%	MORE THAN \$100,000	13%

Houses

145,000	NUMBER OF HOUSING UNITS	70,000
23%	HOUSES BUILT BEFORE 1940	44%
52%	OCCUPIED BY RENTERS	56%

Transportation

29%	HOUSEHOLDS WITH NO VEHICLE	24%
-----	----------------------------	-----



Satellite image by DigitalGlobe, via Google Earth

Areas with significant flooding

AREA	POPULATION	AVG. INCOME	DESCRIPTION
<b>North Uptown</b>	38,700	\$38,530	Residential and commercial area home to middle and working class; houses range from mansions to small shotgun houses.
<b>Lakeview</b>	22,300	\$69,777	Moderately to very wealthy area with beautiful homes, large park, city art museum and lavish cemetery.
<b>Mid-City</b>	76,900	\$25,583	Mostly working-class and low-income housing; includes Xavier University, historic cemeteries and industrial area.
<b>Central City</b>	26,600	\$26,962	Home to low- and middle-class families, who mostly rent; many homes are shotgun houses built on brick piers.
<b>Gentilly</b>	42,000	\$43,272	Mostly middle-class area with high rate of home ownership; includes historic district and 200-acre park.
<b>North Bywater</b>	32,900	\$27,720	Mostly low-income and working-class housing with large industrial area; of historical significance to African-American history.
<b>Lower Ninth Ward</b>	19,500	\$28,826	Mostly middle- to low-income families who rent; large number of small businesses, schools and churches.
<b>East New Orleans</b>	96,400	\$41,997	Moderate-income area with subdivisions, large business and manufacturing areas and a wildlife refuge.

Areas with little or no flooding

AREA	POPULATION	AVG. INCOME	DESCRIPTION
<b>Black Pearl/ East Carrollton</b>	6,200	\$52,336	Mostly middle-class homes and apartment buildings; contains oldest operating street railway line.
<b>Audubon</b>	14,900	\$108,964	Includes a 127-acre park, Tulane and Loyola universities, historic mansions and the city zoo.
<b>Riverside</b>	12,700	\$38,149	Residential area of moderate-income families with various ethnicities; contains a few historic parks.
<b>Uptown/ Garden District</b>	11,900	\$59,203	Home to wealthy and middle-class families, with architecture ranging from mansions to single shotgun houses.
<b>Business, Lower Garden Districts</b>	4,200	\$47,985	Contains main commercial, business, government and recreation facilities, along with art galleries and historic buildings.
<b>French Quarter/ Marigny</b>	58,800	\$58,571	Oldest part of New Orleans and main tourist destination; contains many hotels, bars, shops and historic homes.
<b>West Bank</b>	58,800	\$45,249	Industrial and residential area, including a large military installation, small businesses and subdivisions.
<b>Lakeshore</b>	5,800	\$112,094	Wealthiest residential area of the city; includes popular entertainment district and the University of New Orleans.


Community Data Center: Technical Assistance - Mozilla Firefox

File Edit View Go Bookmarks Tools Help

http://www.gnocdc.org/tech-assist.cfm Go

Greater New Orleans  
COMMUNITY Data CENTER

[Home](#) » **Ask Allison**



## Ask Allison

Hi, I'm Allison Plyer, Senior Consultant with the Community Data Center. We work with nonprofit clients to use data to support their grantwriting, planning and advocacy efforts.

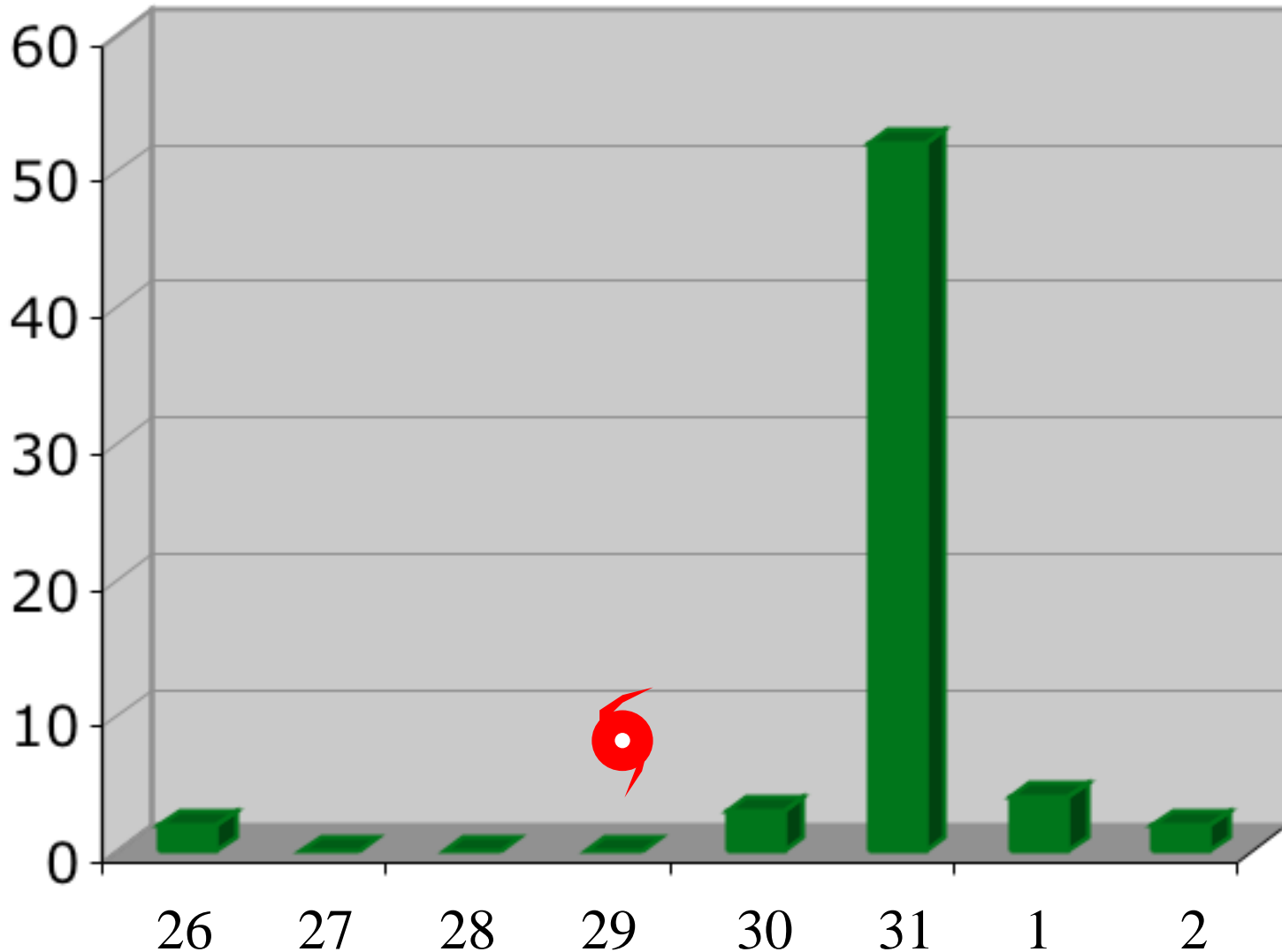
We know that using data can be frustrating at times. We're here to help!

We've tried to create a web site that makes getting local data really easy. But there's a whole world of data out there and we've published only a small portion. If after reviewing our website, you haven't found what you're looking for, this is the page to be on.

If you are a New Orleans area nonprofit organization, you can receive one hour of free help from us. (If it will take longer, we can work to negotiate something.)

Please start by submitting the following information. I'll contact you within one business day of receiving your request. Once you make a request, my colleagues and I will work to help you find the best data to meet your needs. This process can take up to two weeks.

# Questions coming in...





“I am involved in mapping and analysis for EPA. The neighborhood map you have (and all the other maps) are great.

I am trying to help build our spatial library for the response and would like to get a shapefile of the neighborhood boundaries.”

“Hello, folks

We're finding your Web site incredibly useful as we try to learn a lot in a short period of time about the neighborhoods in New Orleans - many, many thanks.

A very basic question: Is the 9th Ward, the Lower 9th Ward, the Old 9th Ward all the same neighborhood to the east of the Industrial Canal?

Thanks, and best,

Jessica Mintz

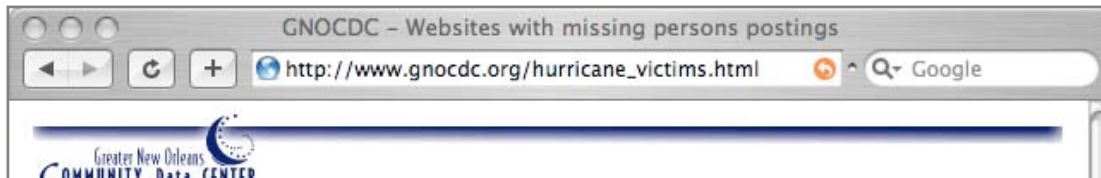
The Wall Street Journal.”

“I need elevation data on Jefferson Parish - we evacuated for Katrina!!!!!!!!!!!!!!!!!!!!!!

PLEASE HELP - I live in Metairie on Jeannette Dr.”

“Was there flooding at 4672 Painters Street in the Gentilly area? My sister is there alone and did not evacuate. It is a 3 level home, but if you know of anything please, in God's name, please email us.”

# Best resources for FAQs



## Looking for New Orleans Evacuees

Use the following websites to find family and friends who Hurricane Katrina. We've included tips on how to use the their particular strengths.

### Red Cross Official Registry

This registry is most useful if you are looking for people who may be living in a shelter. Search using the "Locate Evacuee" feature on the left hand side of the search results on the same page...be sure to scroll down to view the results, as they are probably from different websites and forums. [Visit the Red Cross's Registry.](#)

### Search multiple websites and forums at once

This site is useful, because after Katrina, a bunch of websites and forums were created to help find evacuees. This site searches several of these forums and websites (if you search using the last name of the evacuee, you may get through all the results, as they are probably from different websites and forums). [Visit www.katrinelist.net...](#)

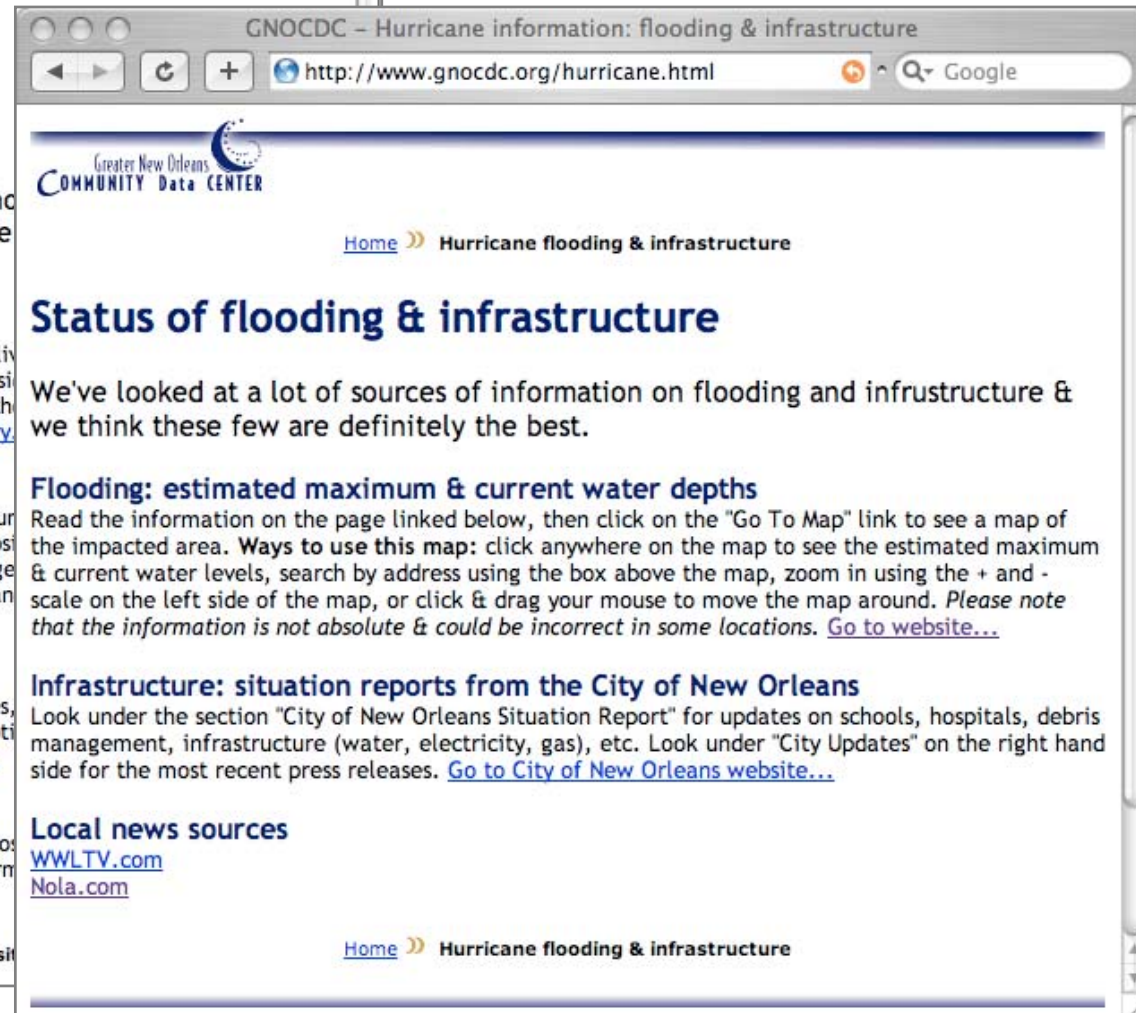
### FirstGov's Find Family & Friends List

This site has general links as well as more specialized lists of evacuees, patients, military personnel, nursing home residents and more. Descriptions of the links go directly to the appropriate page or forum. Look for terms like "Persons", "Survivors List", etc. [View list...](#)

### Other websites and forums

Once you've tried the websites listed above, you should try the Red Cross's links go directly to the appropriate page or forum. Look for terms like "Persons", "Survivors List", etc. [View list...](#)

[Home](#) » Looking for hurricane victim websites



## Status of flooding & infrastructure

We've looked at a lot of sources of information on flooding and infrastructure & we think these few are definitely the best.

### Flooding: estimated maximum & current water depths

Read the information on the page linked below, then click on the "Go To Map" link to see a map of the impacted area. **Ways to use this map:** click anywhere on the map to see the estimated maximum & current water levels, search by address using the box above the map, zoom in using the + and - scale on the left side of the map, or click & drag your mouse to move the map around. *Please note that the information is not absolute & could be incorrect in some locations.* [Go to website...](#)

### Infrastructure: situation reports from the City of New Orleans

Look under the section "City of New Orleans Situation Report" for updates on schools, hospitals, debris management, infrastructure (water, electricity, gas), etc. Look under "City Updates" on the right hand side for the most recent press releases. [Go to City of New Orleans website...](#)

### Local news sources

[WWLTV.com](#)  
[Nola.com](#)

[Home](#) » Hurricane flooding & infrastructure



"I think this is an amazing service! I've been through several hurricanes and floods and have not seen this -- keep up the great work."

-United Way of America

Director, Crisis Preparedness, Response and Recovery



Recovery



GREATER  
NEW ORLEANS



**FAIR**  
**HOUSING**  
ACTION CENTER



GREATER NEW ORLEANS  
AFTERSCHOOL  
PARTNERSHIP



Literacy  
Alliance



PolicyLink

*Lifting Up What Works®*



FEMA



AMERICA SPEAKS



The Annie E. Casey Foundation



GREATER NEW ORLEANS

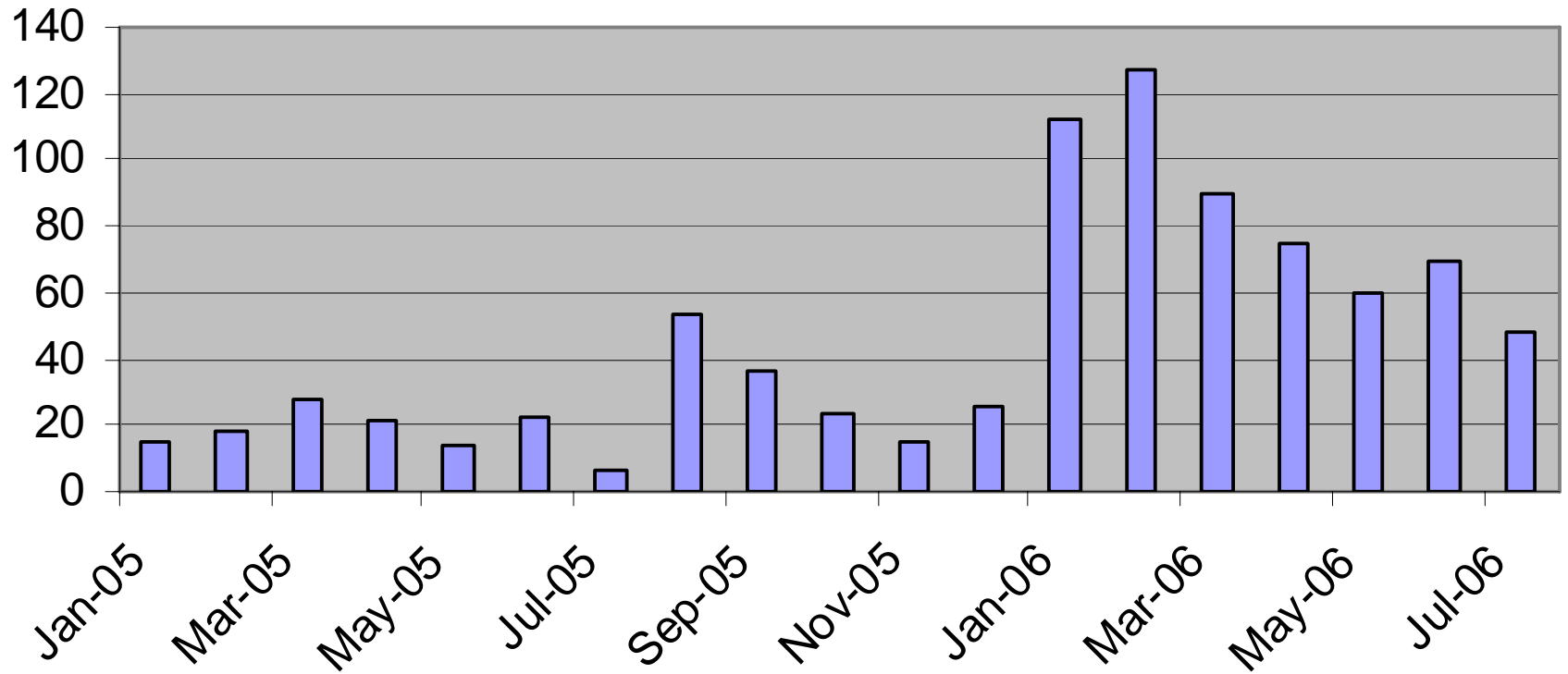


FAIR HOUSING ACTION CENTER





## Ask Allison requests Jan05-July06



Little good data...

tough questions

"I need an estimate of how many children have returned to the city."

-Second Harvesters Food Bank

"I need an estimate of how many children have returned to the city."

-Second Harvesters Food Bank

"Do you have info on the current number of low-income seniors throughout the state?"

- Catholic Charities



"I need an estimate of how many children have returned to the city."

-Second Harvesters Food Bank

"I would like any valid data you have on the post-Katrina population of Orleans Parish by neighborhood."

- International Medical Corps

"Do you have info on the current number of low-income seniors throughout the state?"

- Catholic Charities

"I need an estimate of how many children have returned to the city."

-Second Harvesters Food Bank

"I would like any valid data you have on the post-Katrina population of Orleans Parish by neighborhood."

- International Medical Corps

"What are the demographics nowadays in New Orleans? Without that information, we can't determine whether a jury is representative of the population."

-Orleans Parish Public Defender

"Do you have info on the current number of low-income seniors throughout the state?"

- Catholic Charities

"I need an estimate of how many children have returned to the city."

-Second Harvesters Food Bank

"I would like any valid data you have on the post-Katrina population of Orleans Parish by neighborhood."

- International Medical Corps

"What are the demographics nowadays in New Orleans? Without that information, we can't determine whether a jury is representative of the population."

-Orleans Parish Public Defender

"Do you have info on the current number of low-income seniors throughout the state?"

- Catholic Charities

"We need daytime population figures for New Orleans to make informed decisions about the future of television measurement in the market."

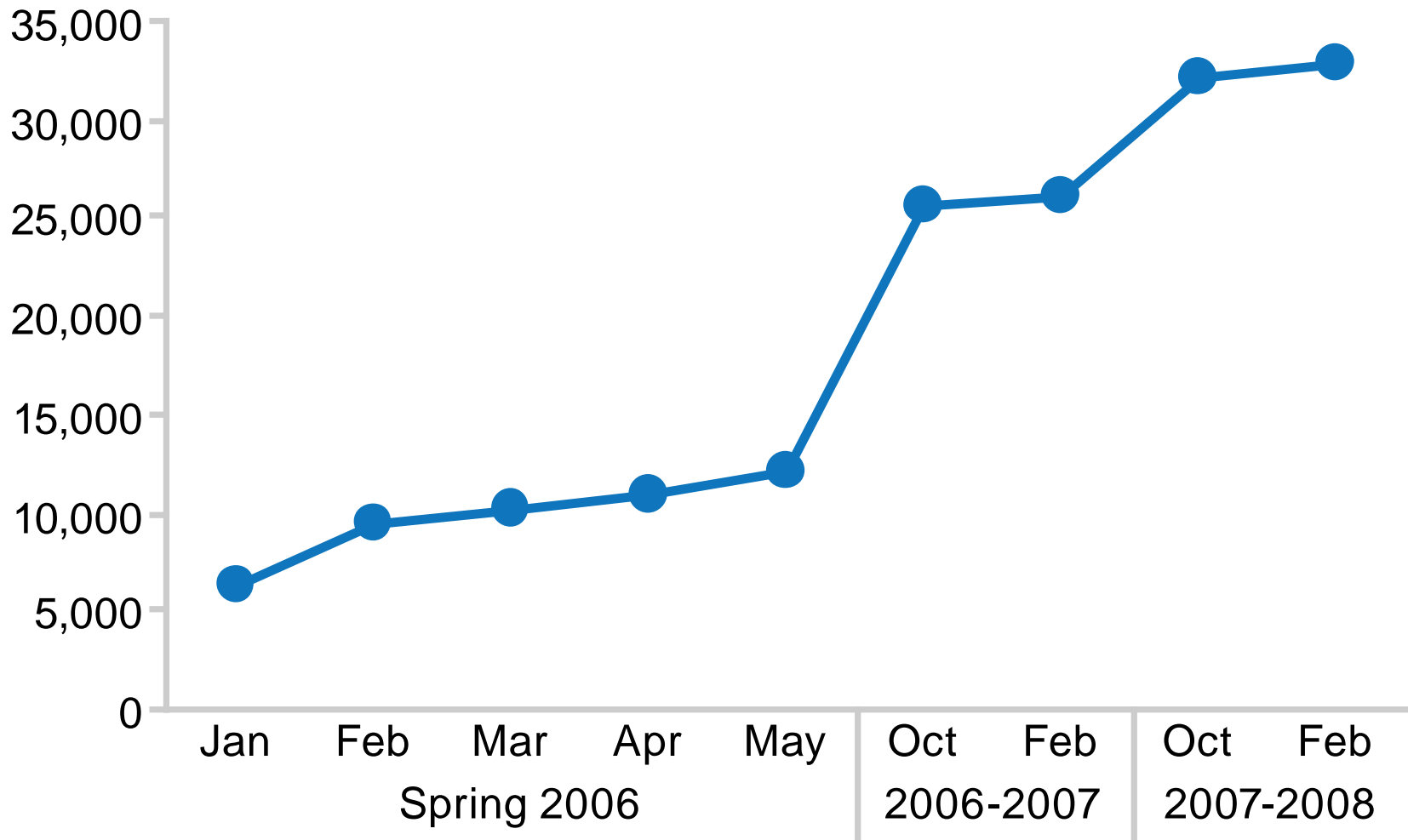
- Nielsen  
Media Research

"As the statistician for HIV/AIDS Program, I am interested in obtaining the latest population estimates available as well as any demographic information that might be available. In order to create program-wide plans for community outreach, surveillance and behavioral survey efforts geographic or neighborhood breakdowns at any level would be immensely useful."

- Louisiana Office of Public Health



# Public School Enrollment (New Orleans)



"I am working with colleagues from LSU, UNO, Florida Int'l on modeling and projecting the reconstruction of New Orleans using a long standing model based on other reconstruction after disaster efforts.

I am having trouble finding a source to update deaths from Katrina, estimates of economic losses, and breakdown of post disaster expenditures for New Orleans proper by FEMA."

- Kennedy School of Government, Harvard

"I am looking for cost of living increase (cost of consumer goods, gasoline, housing, etc.) in New Orleans region due to Katrina compared to US average. Federal Agencies in the New Orleans area are going to submit an emergency request to the Office of Personnel Management to adjust Federal blue-collar wages to compensate for the impact of Katrina on local socio-economic conditions."

- Louisiana National Guard

"I need information on where small businesses were located pre-Katrina and where small businesses have since re-opened(and where there are plans to reopen). We're reaching out to small business owners who were affected by Katrina and who would benefit from access to capital to be able to reopen their businesses. We plan to do block walking to share information about our loan product."

- ACCION USA



"What percent of all jobs (or income) can be attributed to small businesses? How much annually do they pump into the economy? What percent of the economic life can be attributed to small businesses? I'm trying to demonstrate that small business plays a vital and significant role in the economic life of the city/region."

- Annie E. Casey Foundation

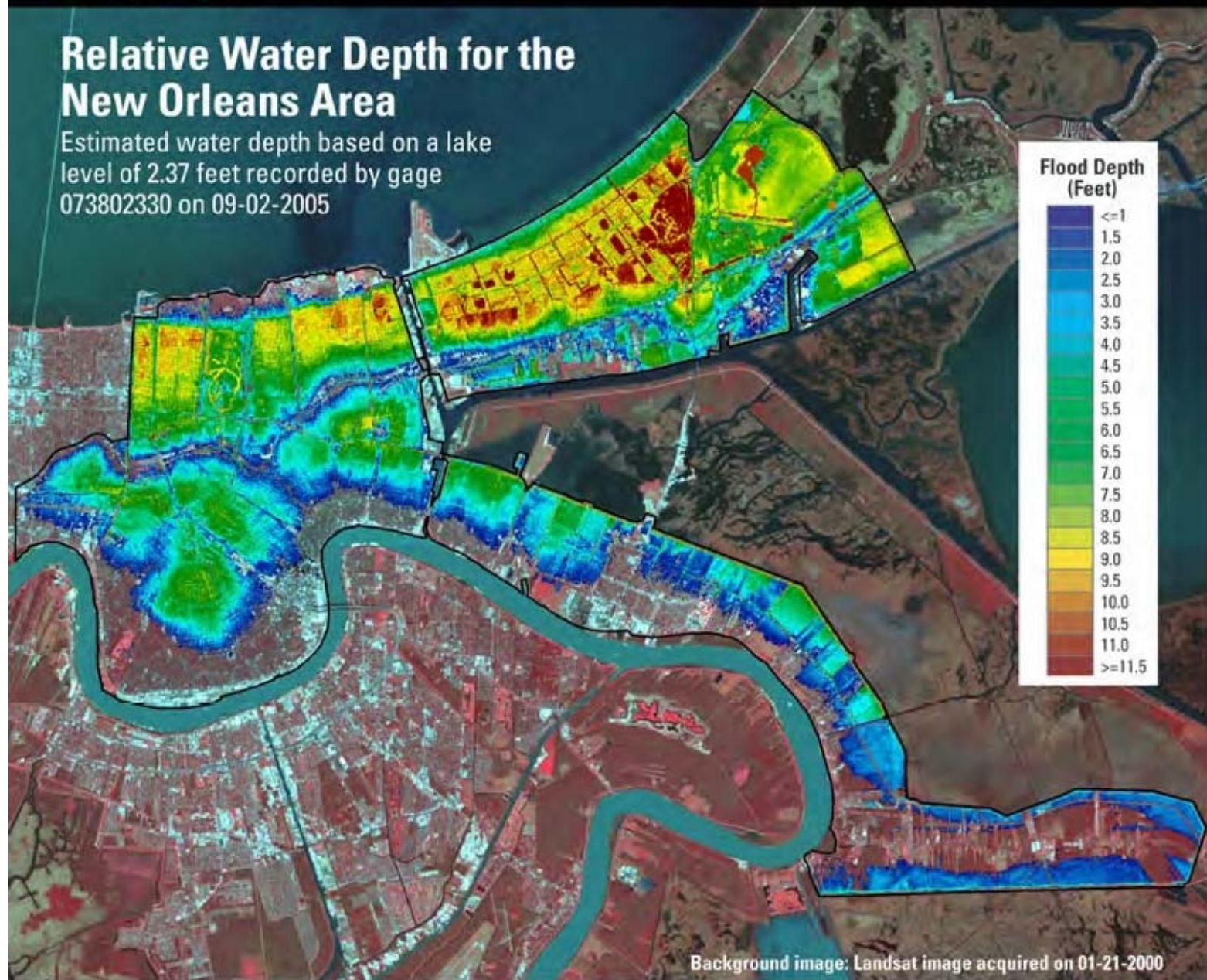
"We need to do a study to back up our belief that Terrebonne Parish provides jobs for persons from all over our region. Having an "official" number of these persons and location of their homes would help to demonstrate the degree to which Terrebonne Parish businesses provide employment opportunities to more than just the residents of the parish. Thus the persons who commute to their jobs in Terrebonne add to the overall recovery of the region. We are lobbying to have the GO Zone legislation's time frame extended for Terrebonne Parish just like it was for Orleans."

- Terrebonne Economic Development Authority

**Population and  
demographic estimates  
post-Katrina...**

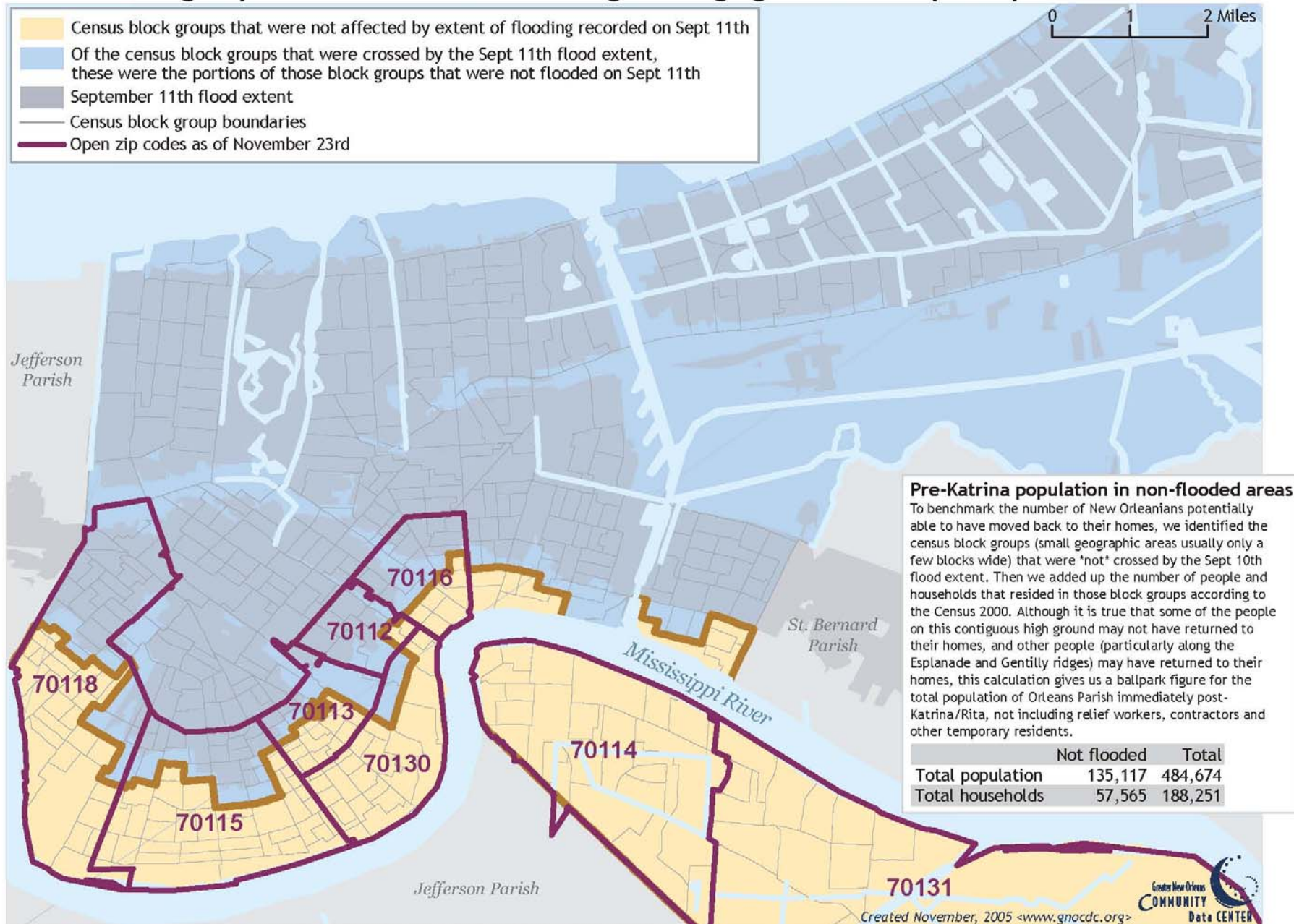
## Relative Water Depth for the New Orleans Area

Estimated water depth based on a lake  
level of 2.37 feet recorded by gage  
073802330 on 09-02-2005





# Census block groups in Orleans Parish on contiguous high ground with open zip codes



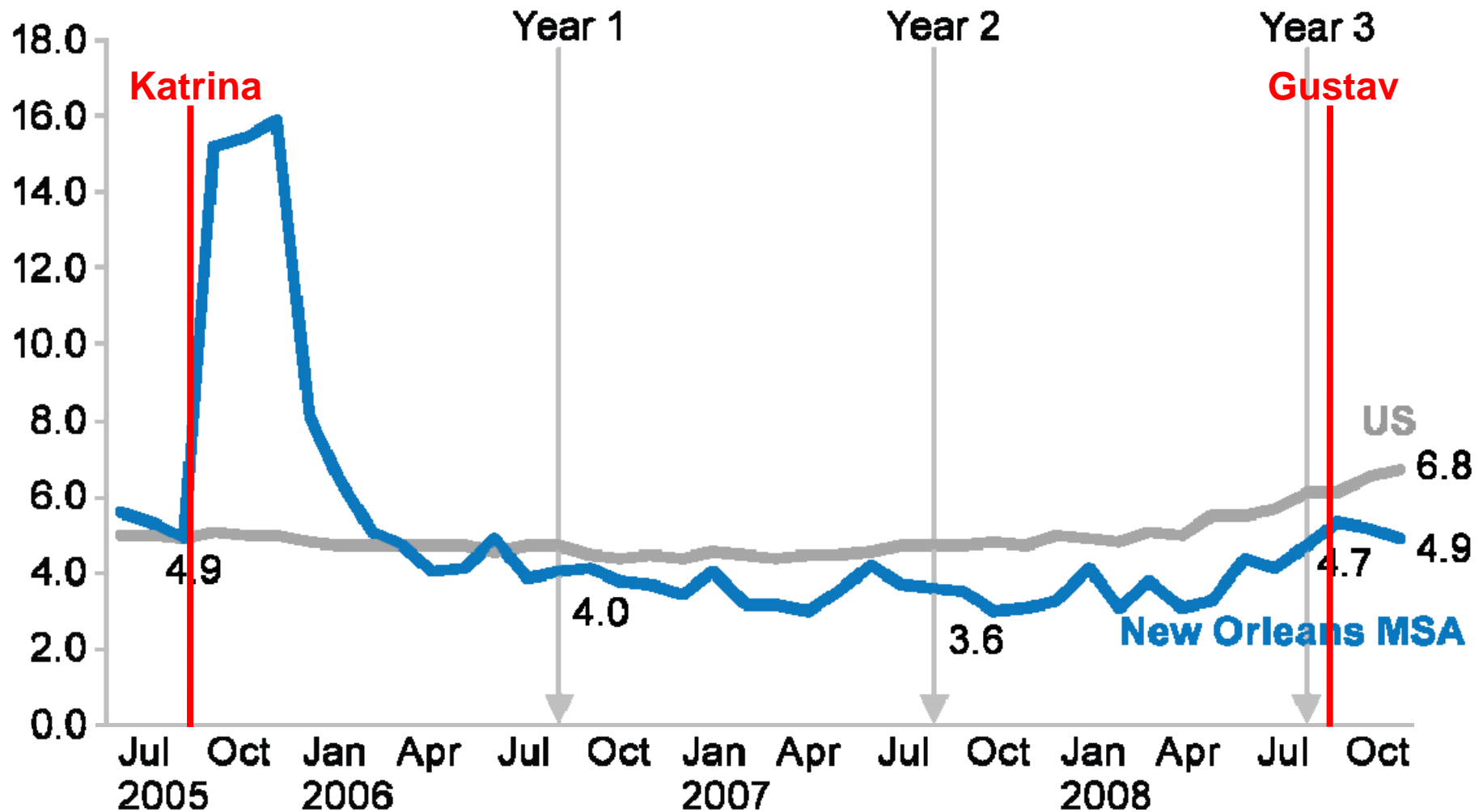
Sources: Sept 11th flood extent (FEMA), zip code boundaries (ESRI), other boundaries (Census TIGER)

# Drivers of repopulation:

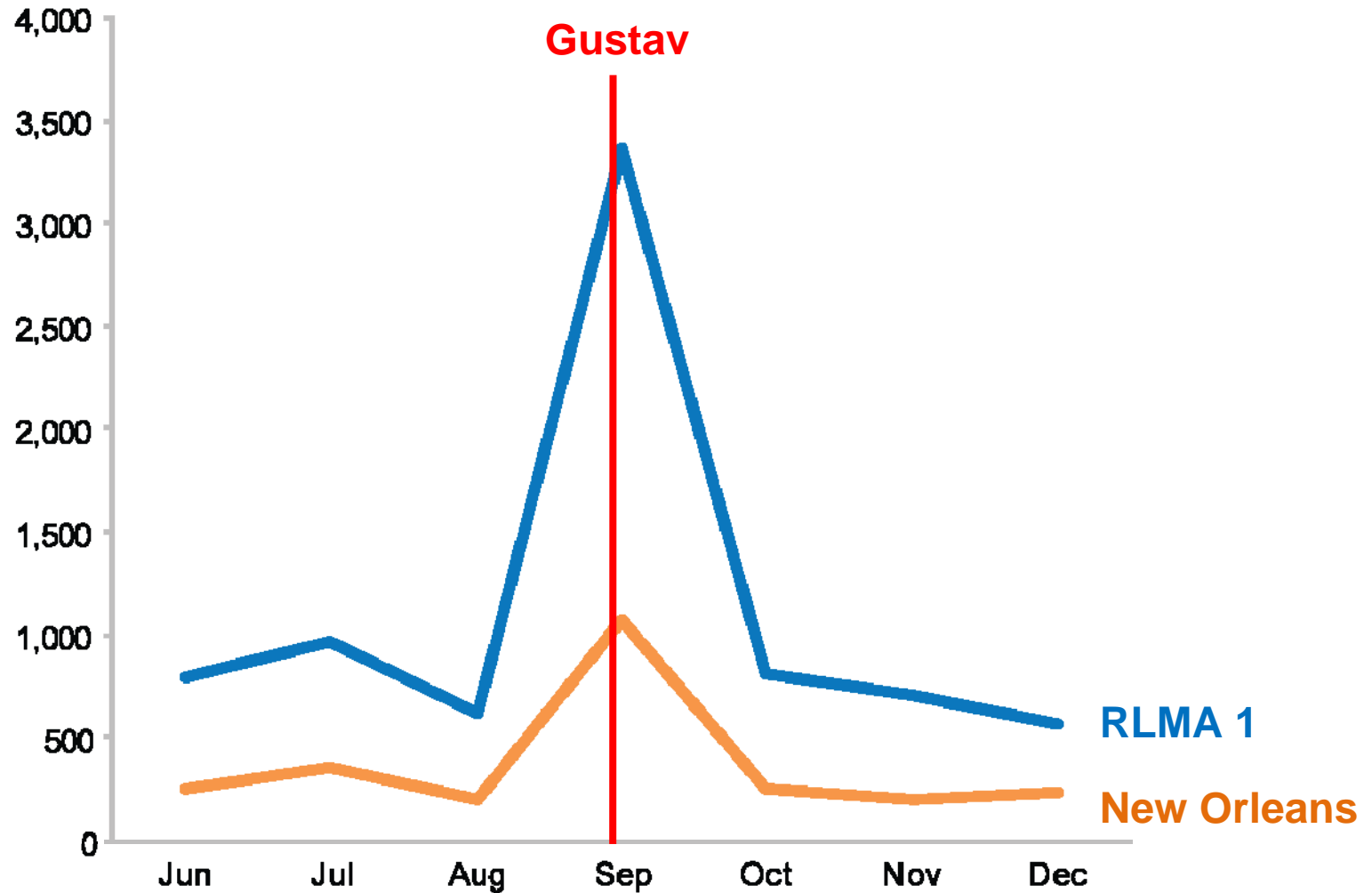
- Level of damage to housing
- Jobs
- Personal financial resources
- Children
- Available services



# Unemployment Rate



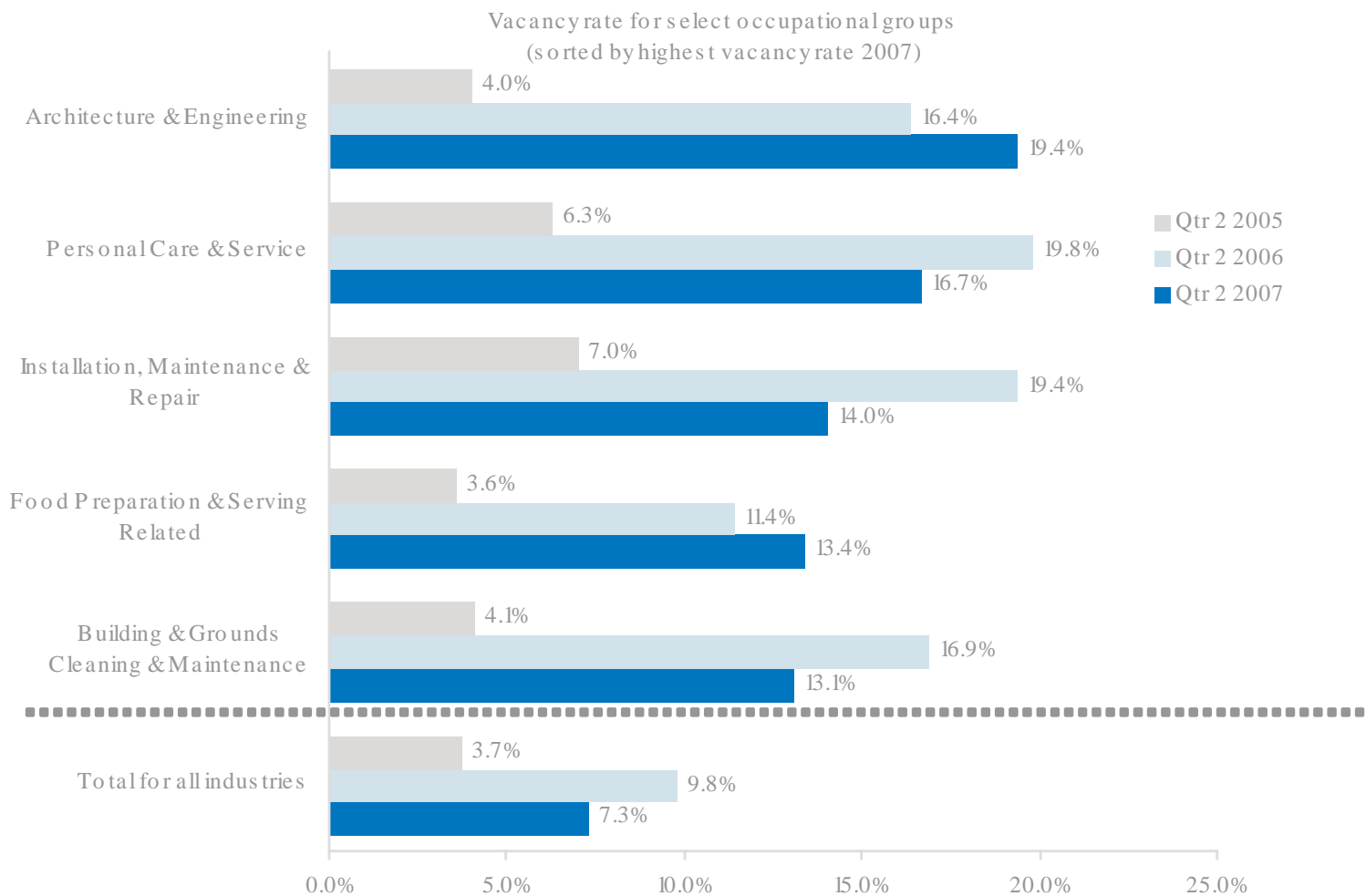
# Unemployment Claims (2008)



Source: Louisiana Workforce Commission; U.S. Department of Labor, Office of Workforce Security .

Note: This data covers the Regional Labor Market Area consisting of Jefferson, Orleans, Plaquemines, St. Bernard, St. Charles, St. James, St. John the Baptist, and St. Tammany parishes.

# Job Vacancy Rates (RLMA 1\*)



Source: Louisiana Workforce Commission.

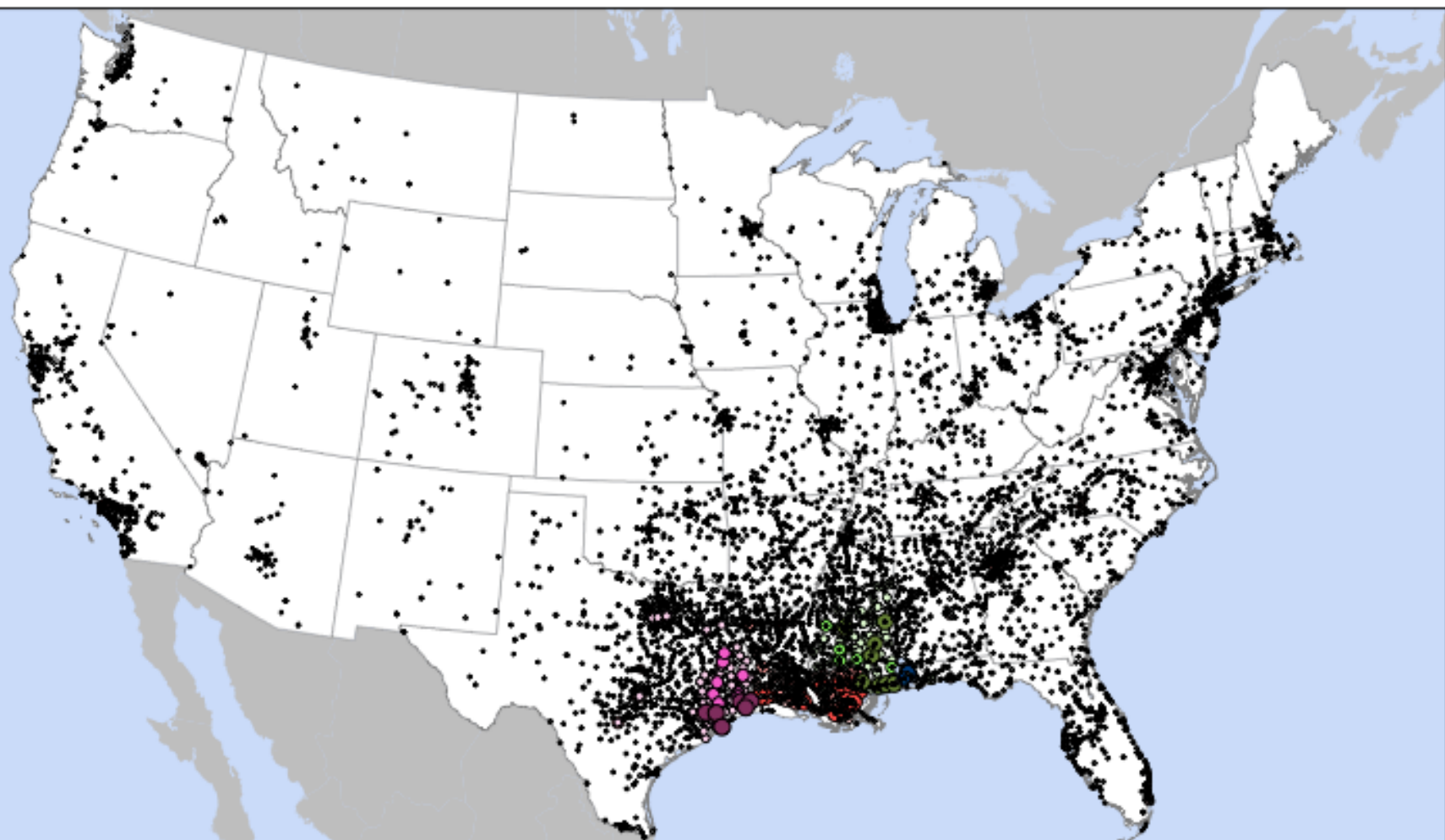
\*This data covers the Regional Labor Market Area consisting of Jefferson, Orleans, Plaquemines, St. Bernard, St. Charles, St. James, St. John the Baptist, and St. Tammany parishes.

# FEMA's Individuals & Households Program



FEMA

**Locations of Katrina/Rita Applicants from Louisiana, Mississippi, Alabama, and Texas as of 10/31/05**



**FEMA**



# FEMA

## Reported Mailing Addresses of Katrina IA Applicants from Louisiana, Mississippi, and Alabama DR#s 1603-05 as of 09-28-06

This report reflects the applicants' reporting of their current mailing address, including those who have evacuated outside of the hurricane-impacted areas. It is as current as any subsequent change of address notifications they have given to FEMA. There are approximately 432,967 additional applicants whose current address listings are outside U.S. Census Metropolitan Statistical Areas, or include misspellings or other data error.

Ranking	CBSA	Metropolitan Statistical Area Name	*State	Number of Applicants
1	35380	New Orleans-Metairie-Kenner, LA	LA	372,727
2	12940	Baton Rouge, LA	LA	156,776
3	25060	Gulfport-Biloxi, MS	MS	92,730
4	33660	Mobile, AL	AL	84,064
5	27140	Jackson, MS	MS	81,646
6	26420	Houston-Baytown-Sugar Land, TX	TX	77,624
7	37700	Pascagoula, MS	MS	58,933
8	25620	Hattiesburg, MS	MS	49,641
9	26380	Houma-Bayou Cane-Thibodaux, LA	LA	48,107



**Data about evacuees...**

**???**



## Hurricane Katrina Evacuees, August 2006

In August 2006, evacuees identified in CPS-sampled households represented about 1.2 million persons age 16 and over who had evacuated from where they were living in August 2005 due to Hurricane Katrina. About 58 percent of these persons were again living in the home from which they had evacuated. Of the 1.2 million evacuees, 63.0 percent were in the labor force in August 2006, and their unemployment rate was 12.6 percent. See table below.

### Employment status in August 2006 of persons 16 years and over who evacuated from their August 2005 residence, even temporarily, due to Hurricane Katrina 1/

*[Numbers in thousands, not seasonally adjusted]*

Employment status in August 2006	Total	Residence in August 2006	
		Same as in August 2005	Different than in August 2005
Civilian noninstitutional population	1,180	679	501
Civilian labor force	743	410	333
Participation rate	63.0	60.4	66.4
Employed	649	390	259
Employment-population ratio	55.0	57.5	51.6
Unemployed	94	20	74
Unemployment rate	12.6	4.8	22.2
Not in labor force	437	268	169

1/ Represents persons in the civilian noninstitutional population age 16 and over who resided in households that were eligible to be selected for CPS. These data are not representative of the total evacuee population because they do not include children or people residing in shelters, hotels, places of worship, or other units out of scope for CPS. The total number of evacuees estimated from the CPS may change from month to month as people move in and out of the scope of the survey and because of sampling variability.

Note: These data use population controls that have been adjusted to account for interstate moves by evacuees.

[Back to Employment Status Information on Hurricane Katrina Evacuees](#)



# Future Development

**“If you build it they will come” is no longer a sufficient incentive for investment. Credible data about projected demand is needed.**

- Job projections > population projections?**
- Job locations > housing sites?**
- Ideal retail/service sites relative to job sites?**

# Data needs during emergency response, recovery and long-term planning

## Lessons from New Orleans

Presented by:

**Allison Plyer**

Deputy Director

[www.gnocdc.org](http://www.gnocdc.org)