

Disaster Assessment Consortium: On the Map

Local Employment Dynamics Annual Workshop

George W. Putnam
IL Department of Employment Security
February 1, 2007



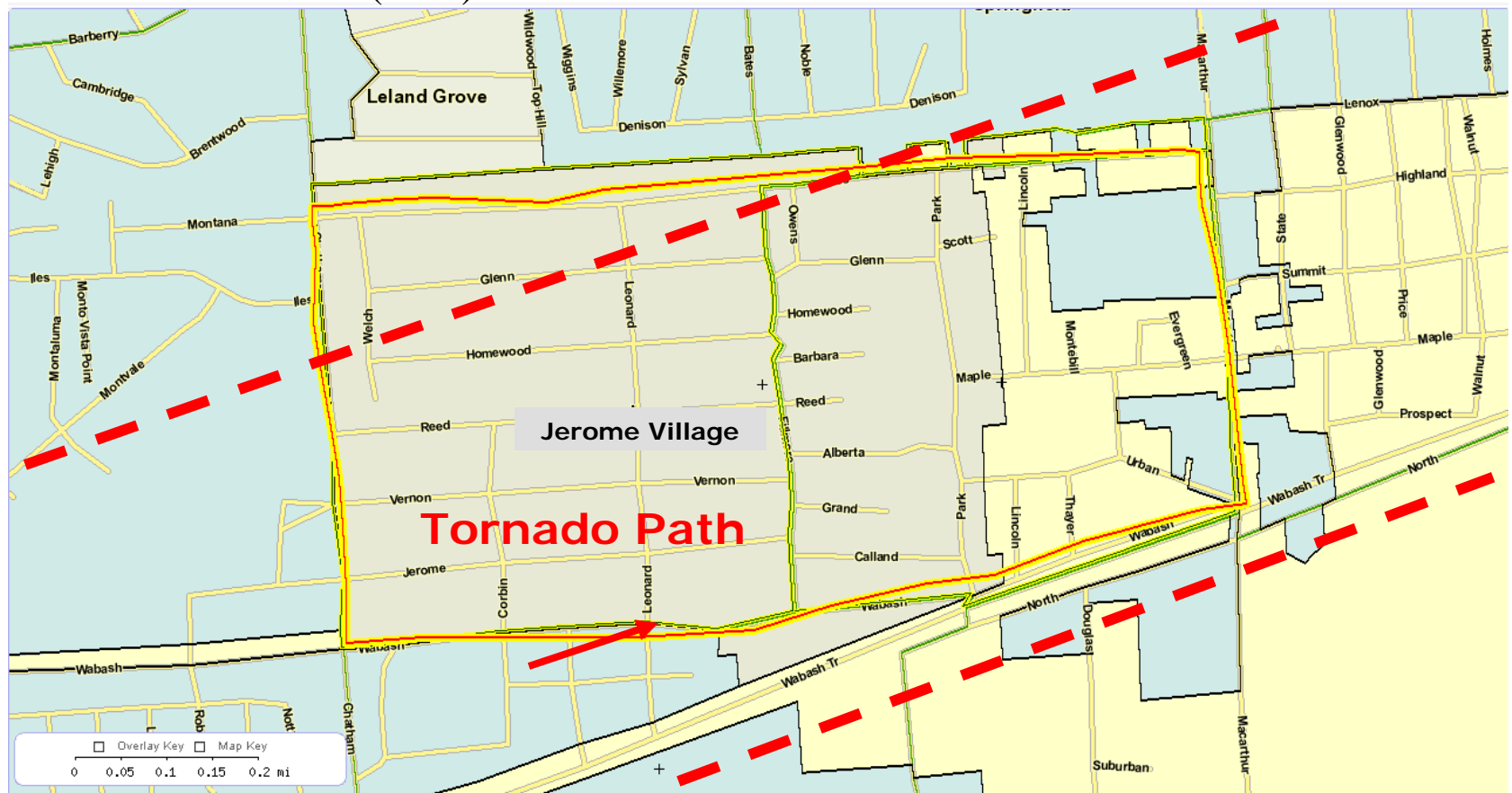
Disaster Assessment

- Illinois experience

- Disaster Assessment Consortium:
 - Getting started
 - LED information leverage

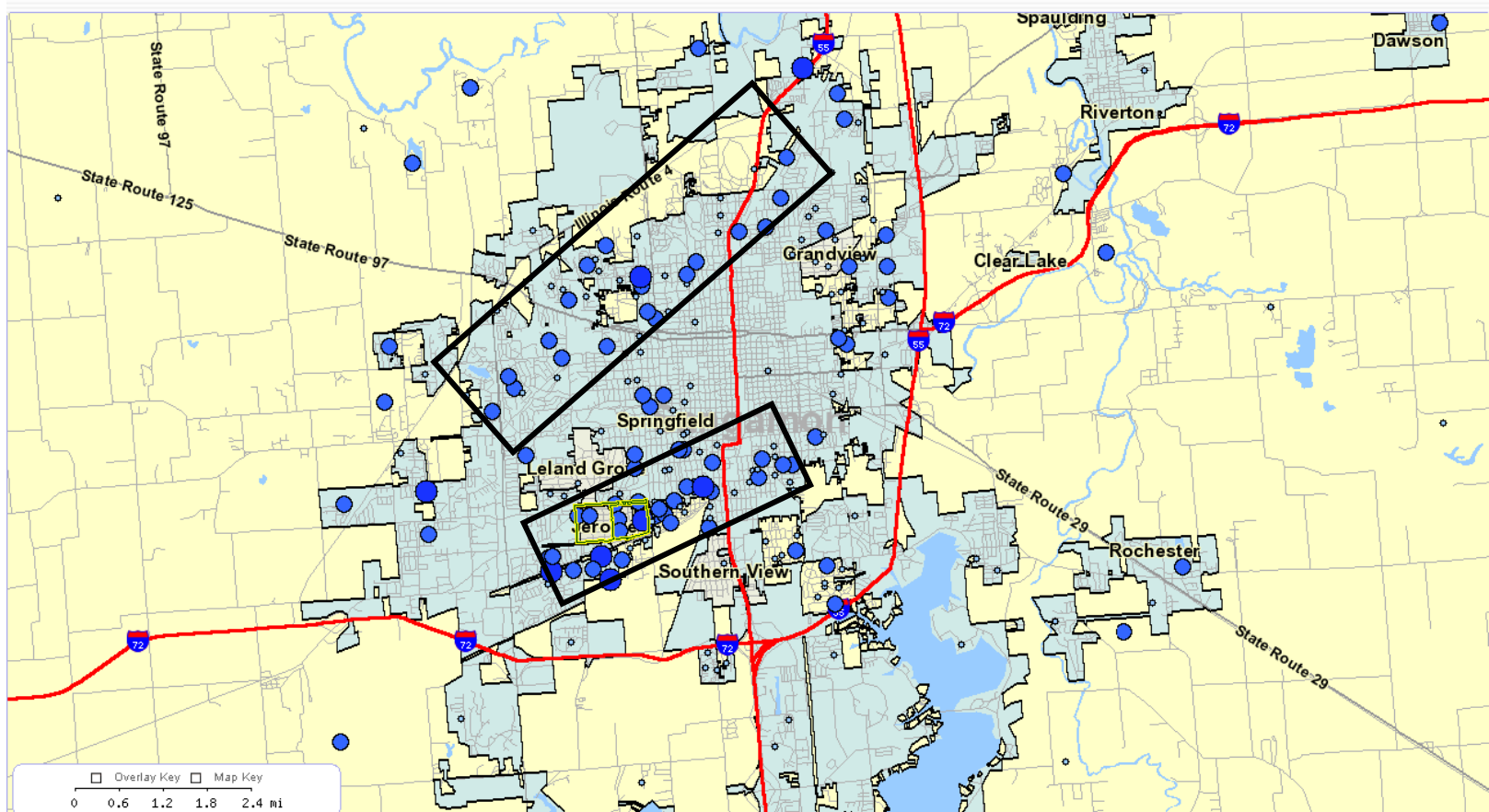
Jerome, IL: Tornado Disaster- 1/2 mile path of destruction

Border: Iles Ave. (north), MacArthur Blvd. (east), Wabash Ave. (south), and
Chatham Rd. (west)



Jerome Village, IL: Where Employees Live

Almost 70% of Jerome employees live in Springfield and nearby unincorporated areas





Jerome Village, IL: Labor Market Challenges

- Retention of current workforce
 - Small-sized firms concentrated in retail trade and food service
 - Average monthly earnings of all workers is only \$2,098 (44% of workers earn \$1,200 per month or less)

- Partial multiplier effect from rebuilding
 - Commuter workforce

- Recruitment of replacement workforce
 - Average monthly earnings of new hires (\$1,246)



Disaster Assessment Consortium: Getting Started

- Project teams
 - Hurricane- Florida and Louisiana
 - Flooding- North Carolina
 - Hazardous waste- Illinois, New Jersey, and Missouri

- Real-time and context information
 - National sources
 - State sources



Disaster Assessment Consortium: LED Information Leverage

- Estimation of disaster-related initial claim
 - Understanding employment conditions as a determinant of claims workload

- Estimation of disaster-assessment scenarios with adjustable parameters
 - Understanding the confluence of local labor markets and mobile disasters