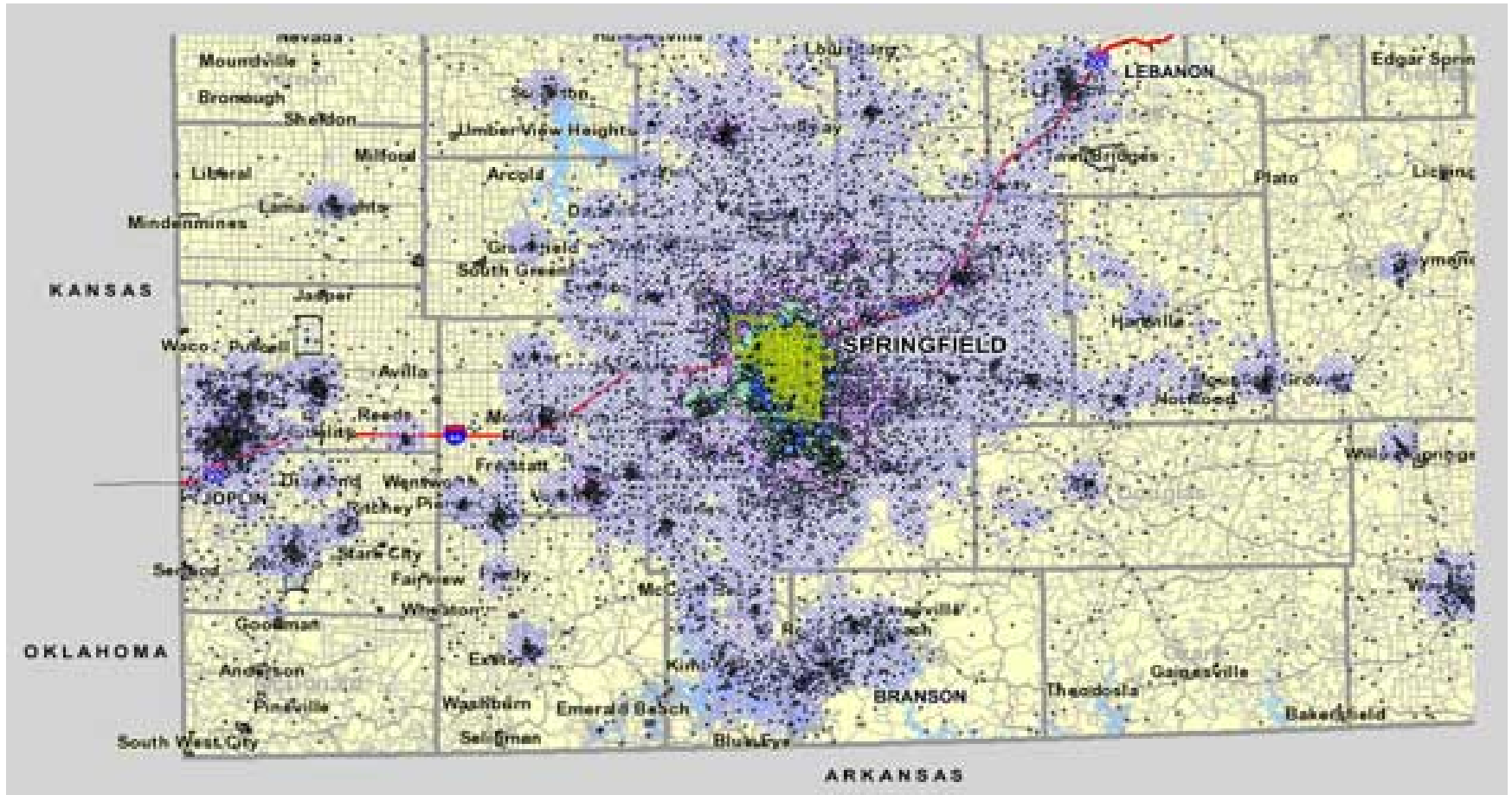


The Origin-Destination Mapping Tool: Application in State and Interstate Economic Analyses

- The Origin – Destination Mapping application can indicate the extent of the area which can supply workers available to an incoming business.
- The Origin – Destination Mapping application can highlight the importance of different highways for commuting from one area to another.
- The Origin – Destination Mapping application can indicate the importance of bridges to the economic development on either side of a specific river.
- The cross state function of the Origin – Destination Mapping application can indicate the mutual importance of specific areas to one another's economic development.
- The Origin – Destination Mapping application can highlight the mix of businesses and industries present in a particular community.

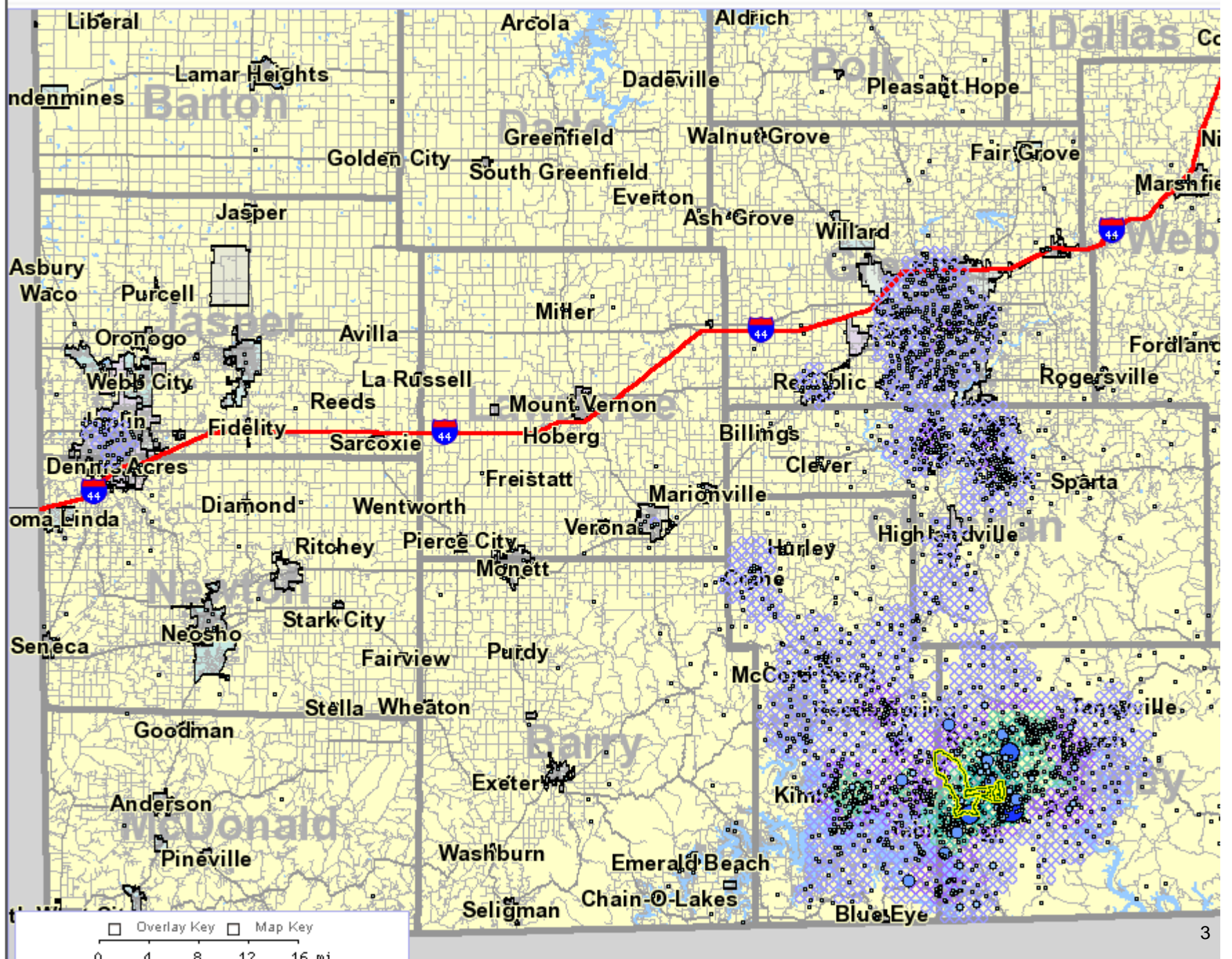
**Presentation by Dr. Timothy O. Smith, Missouri Economic Research and Information Center
January 19, 2006 Local Employment Dynamics Workshop Washington D.C.**

Springfield Workforce Commuting Map



SOURCE: USDC, Bureau of the Census, Local Employment Dynamics;
Missouri Economic Research & Information Center, 2000

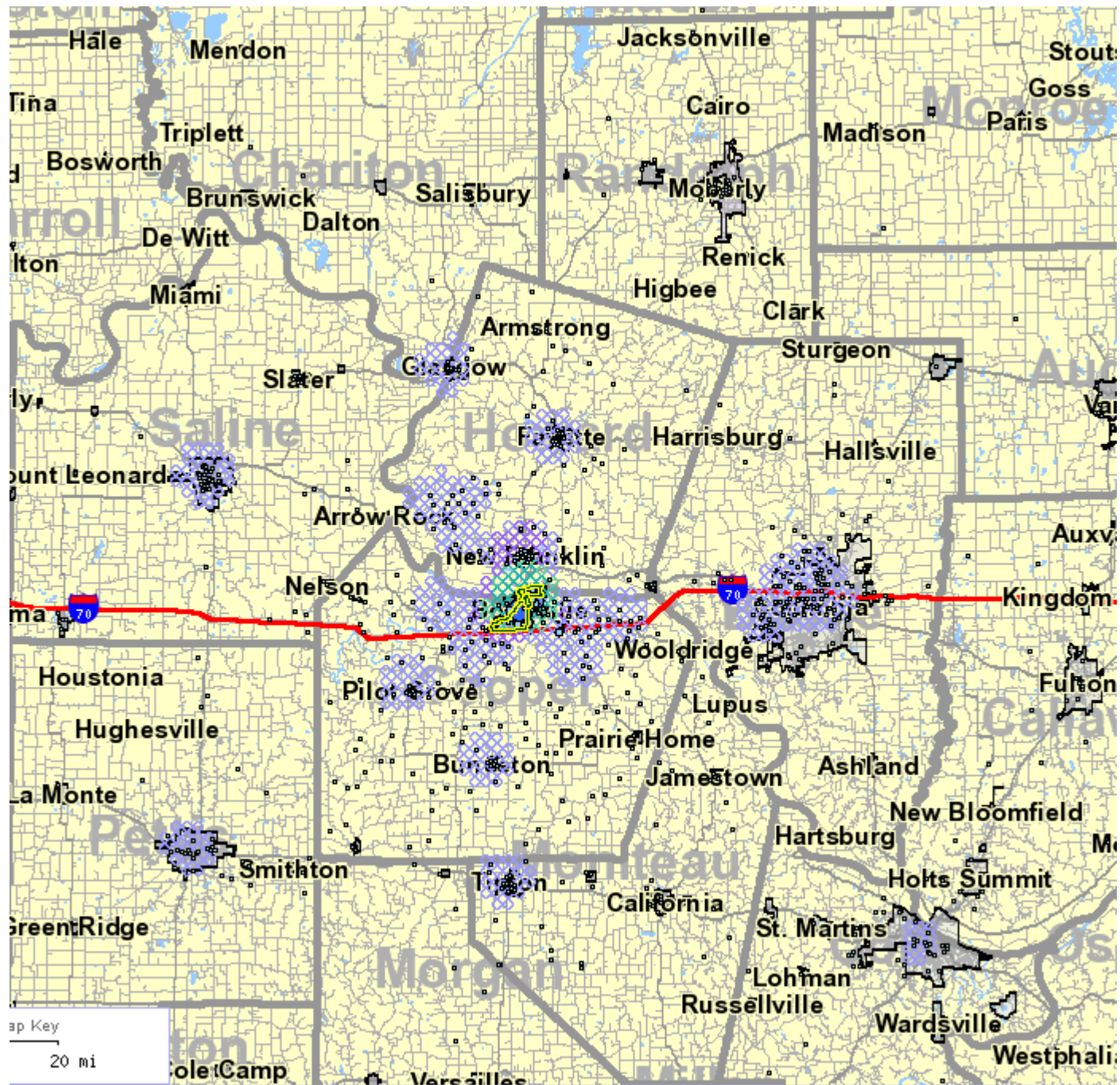
<http://www.business4springfield.com/demographics/workforce.htm>

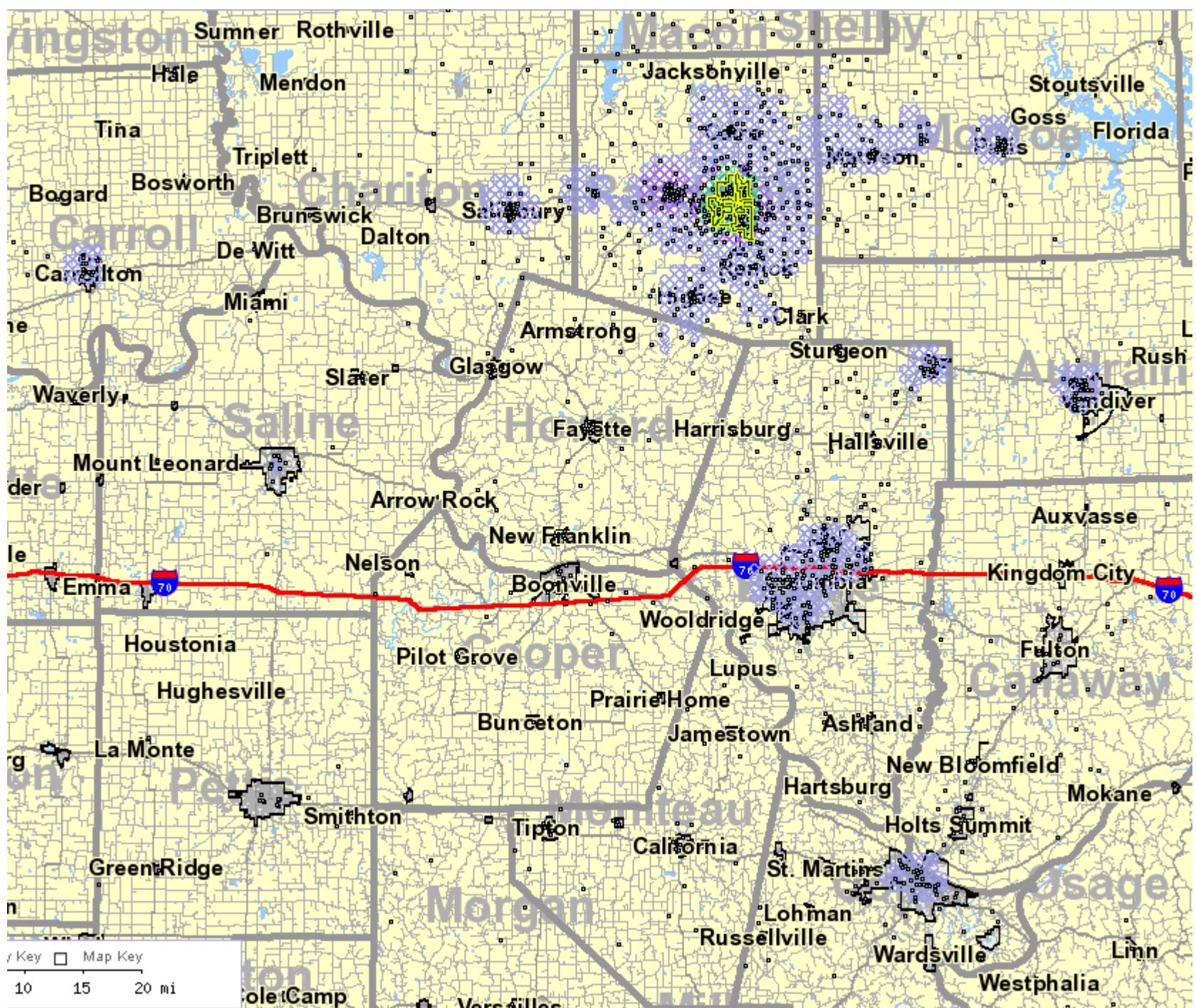


Branson, Missouri Area Profile report

	2003			2002	
	Count	Share		Count	Share
Number of Employers (Beginning of 2nd Quarter)	734			713	
Number of Jobs Held by Employed Workers:					
* All Jobs	12,394	100.00%		11,338	100.00%
* All Jobs (Private Sector Only)	12,047	97.20%		11,006	97.10%
* All Primary Jobs (Worker's highest paying job)	11,429	92.20%		10,629	93.70%
* All Primary Jobs (Private Sector Only)	11,092	89.50%		10,308	90.90%
	2003			2002	
	Count	Share		Count	Share
Total Jobs (All Jobs - Private Sector)	12,047	100.00%		11,006	100.00%
Jobs by Worker Age	Count	Share		Count	Share
* Age 30 or younger	3,591	29.80%		3,313	30.10%
* Age 31 to 54	5,951	49.40%		5,520	50.20%
* Age 55 or older	2,505	20.80%		2,173	19.70%
Jobs by Earnings Paid	Count	Share		Count	Share
* \$1,200 per month or less	5,545	46%		5,107	46.40%
* \$1,201 to \$3,400 per month	5,267	43.70%		4,813	43.70%
* More then \$3,400 per month	1,235	10.30%		1,086	9.90%

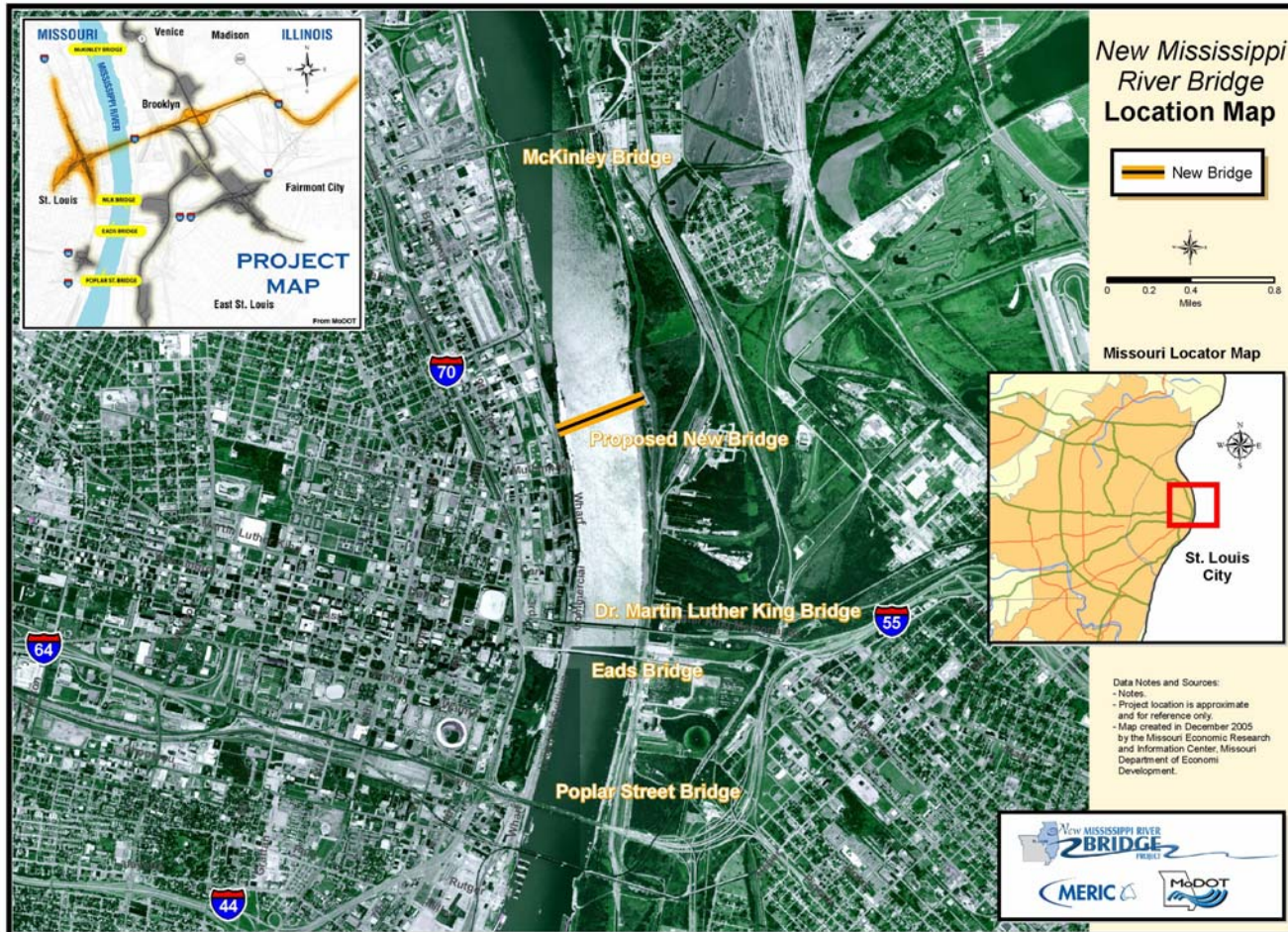
	2003			2002	
Jobs by Primary Industry (2-digit NAICS)	Count	Share		Count	Share
* Agriculture, Forestry, Fishing and Hunting	0	0%		0	0%
* Mining	3	0%		0	0%
* Utilities	128	1.10%		125	1.10%
* Construction	139	1.20%		136	1.20%
* Manufacturing	237	2%		218	2%
* Wholesale Trade	70	0.60%		88	0.80%
* Retail Trade	2,004	16.60%		1,910	17.40%
* Transportation and Warehousing	273	2.30%		76	0.70%
* Information	327	2.70%		296	2.70%
* Finance and Insurance	248	2.10%		237	2.20%
* Real Estate and Rental and Leasing	648	5.40%		536	4.90%
* Professional, Scientific, and Technical Services	137	1.10%		145	1.30%
* Management of Companies and Enterprises	246	2%		17	0.20%
* Administration & Support, Waste Management and Remediation	352	2.90%		337	3.10%
* Educational Services	11	0.10%		0	0%
* Health Care and Social Assistance	1,281	10.60%		1,184	10.80%
* Arts, Entertainment, and Recreation	2,455	20.40%		2,565	23.30%
* Accommodation and Food Services	3,366	27.90%		3,033	27.60%
* Other Services (excluding Public Administration)	120	1%		103	0.90%
* Public Administration	2	0%		0	0%





New Missouri River Bridge Project Analysis

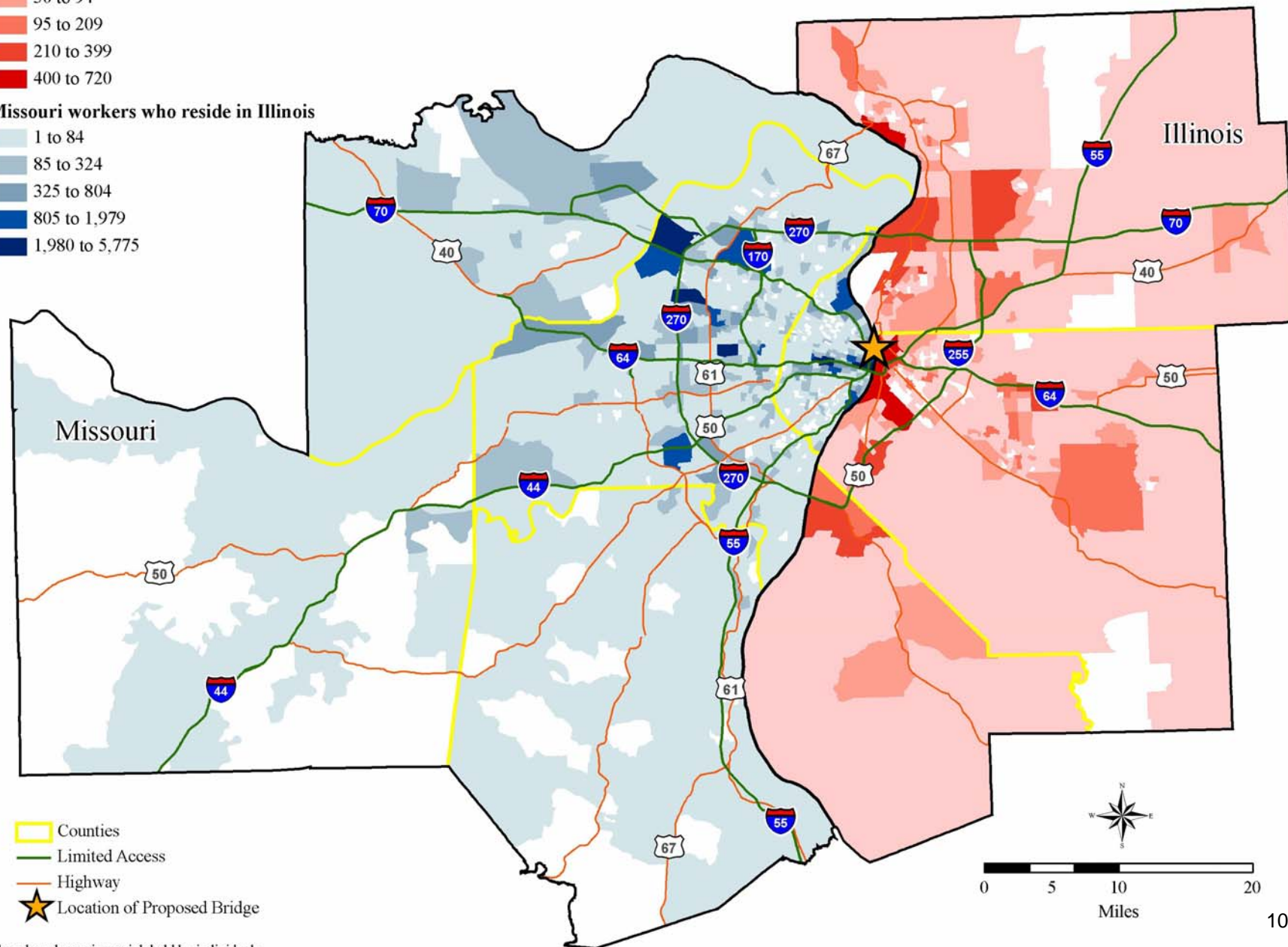
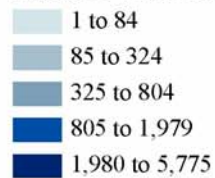
- Where are people going who are crossing the Missouri-Illinois border to work?
- Where do Illinois residents who cross the border live and work?
- Where do Missouri residents who cross the border live and work?



Illinois workers who reside in Missouri

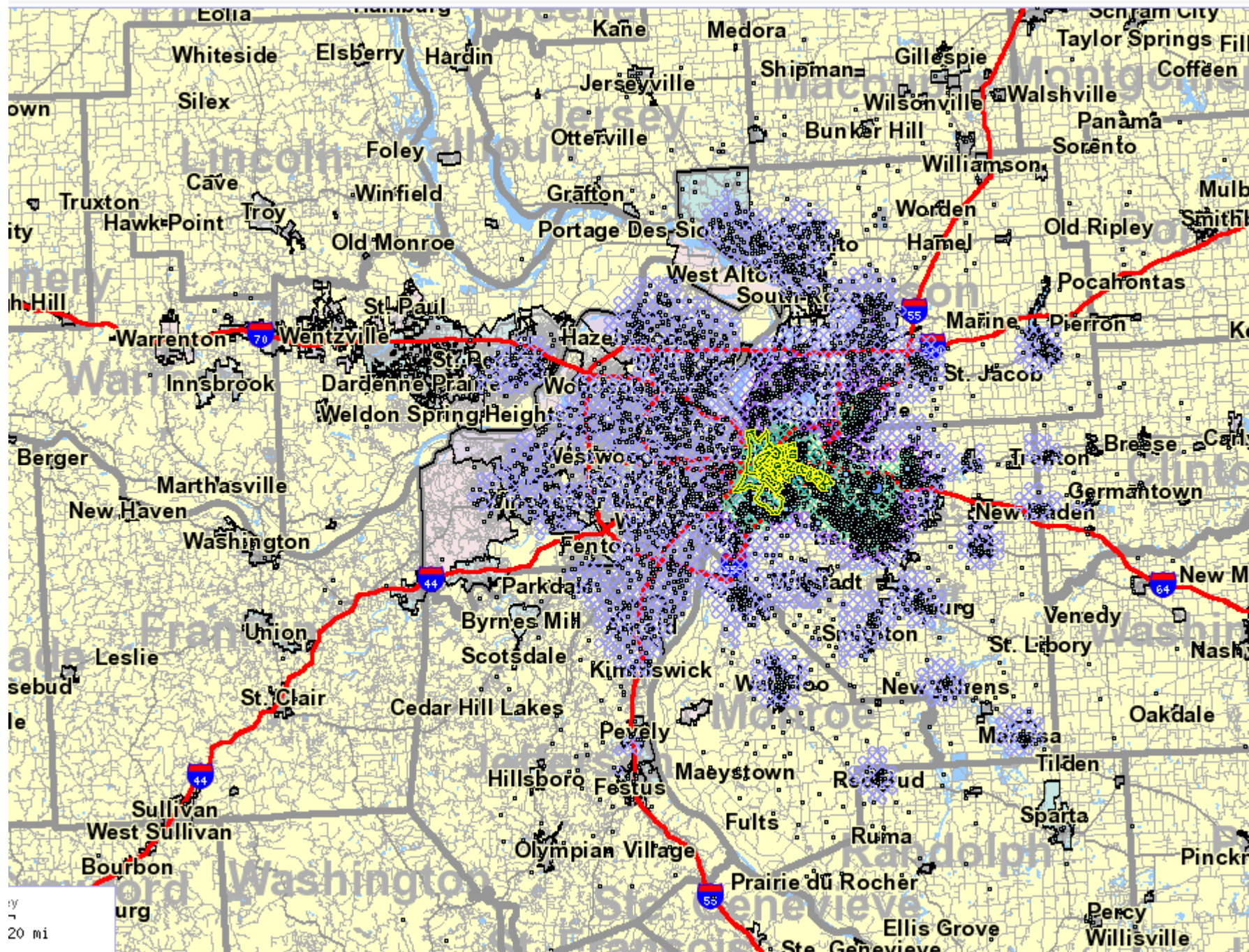


Missouri workers who reside in Illinois



*Numbers based on primary job held by individuals



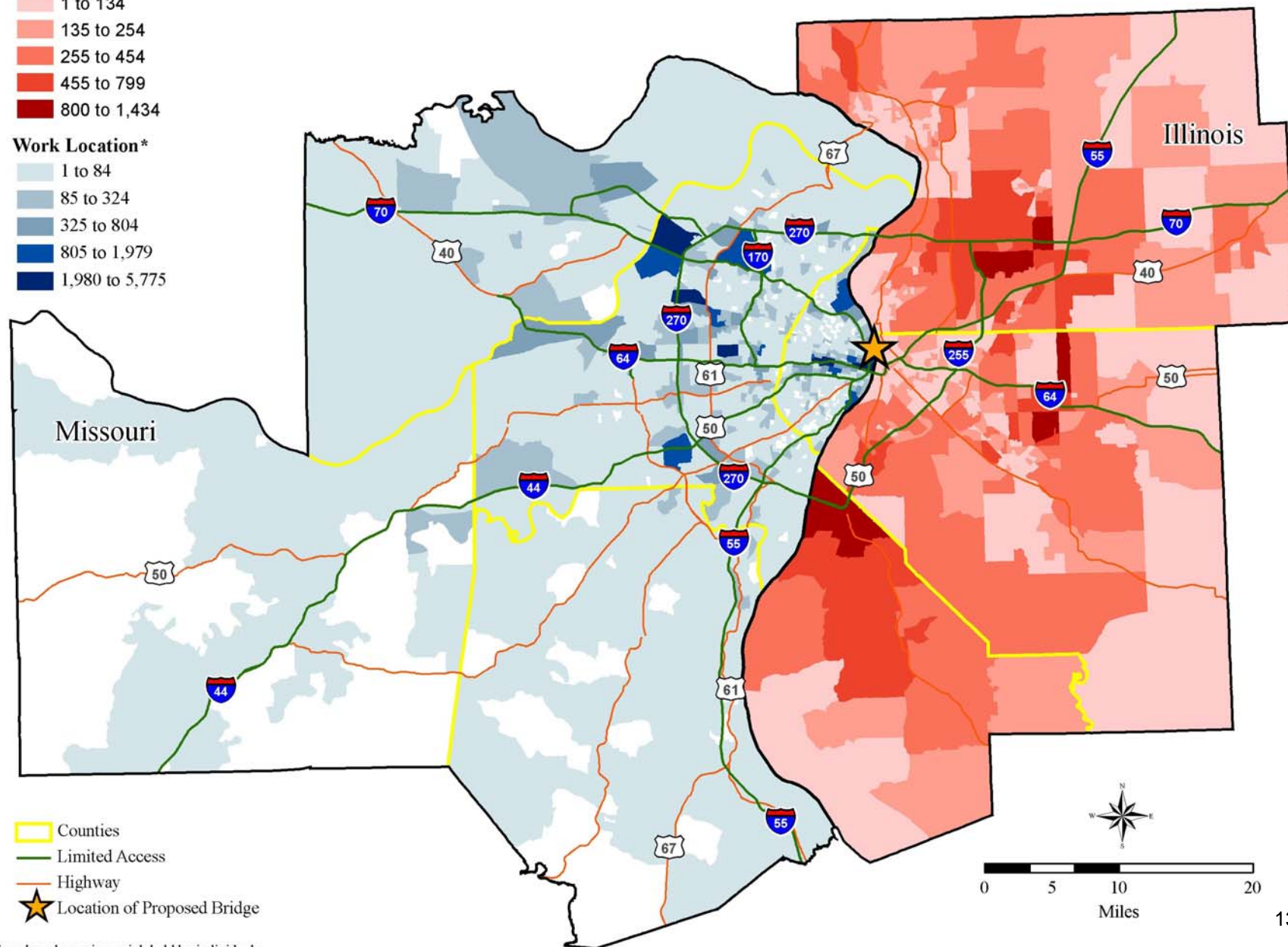


Distribution of Illinois residents who work in Missouri

Residence Location*



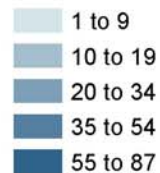
Work Location*



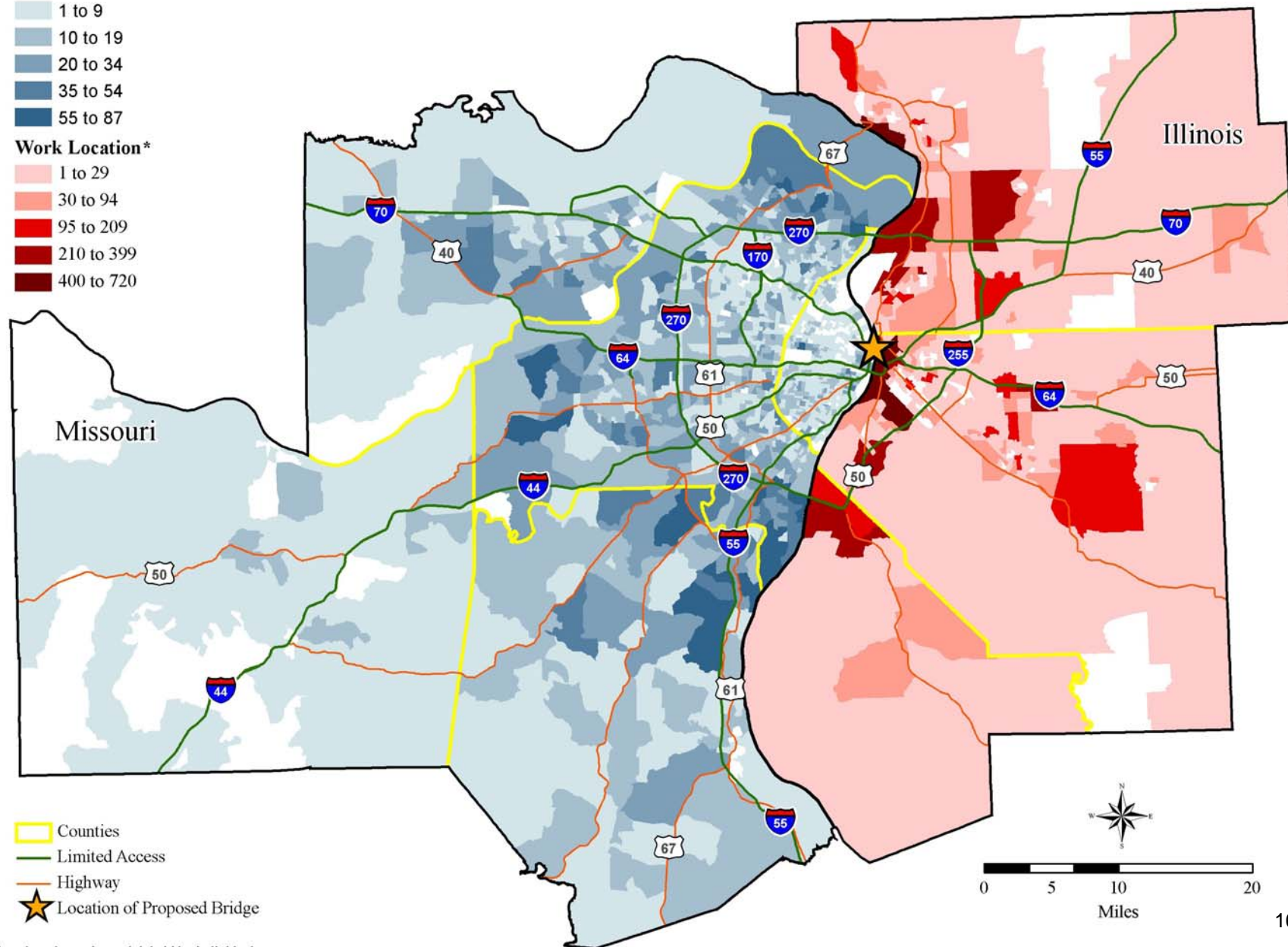
	2003			2002	
	Count	Share		Count	Share
Number of Jobs Held by Residents					
* All Jobs	1,999	100.00%		1,941	100.00%
* All Jobs (Private Sector Only)	1,747	87.40%		1,674	86.20%
* All Primary Jobs (Worker's highest paying job)	1,892	94.60%		1,850	95.30%
* All Primary Jobs (Private Sector Only)	1,657	82.90%		1,602	82.50%
WHERE WORKERS LIVE	2003			2002	
	Count	Share		Count	Share
Total Workers (Primary Jobs - Private Sector)	1,657	100.00%		1,602	100.00%
Cities/Towns Where Residents are Employed					
* St. Louis	319	19.30%		310	19.40%
* Unincorporated Areas	133	8%		126	7.90%
* Maryville	110	6.60%		97	6.10%
* Collinsville	106	6.40%		98	6.10%
* Belleville	73	4.40%		71	4.40%
* All Other Locations	916	55.30%		900	56.20%
Counties Where Residents are Employed	Count	Share		Count	Share
* Madison	575	34.70%		528	33%
* St. Louis	319	19.30%		310	19.40%
* St. Louis	258	15.60%		284	17.70%
* St. Clair	222	13.40%		219	13.70%
* Cook	47	2.80%		37	2.30%
* All Other Locations	236	14.20%		190	11.90%

Distribution of Missouri residents who work in Illinois

Residence Location*



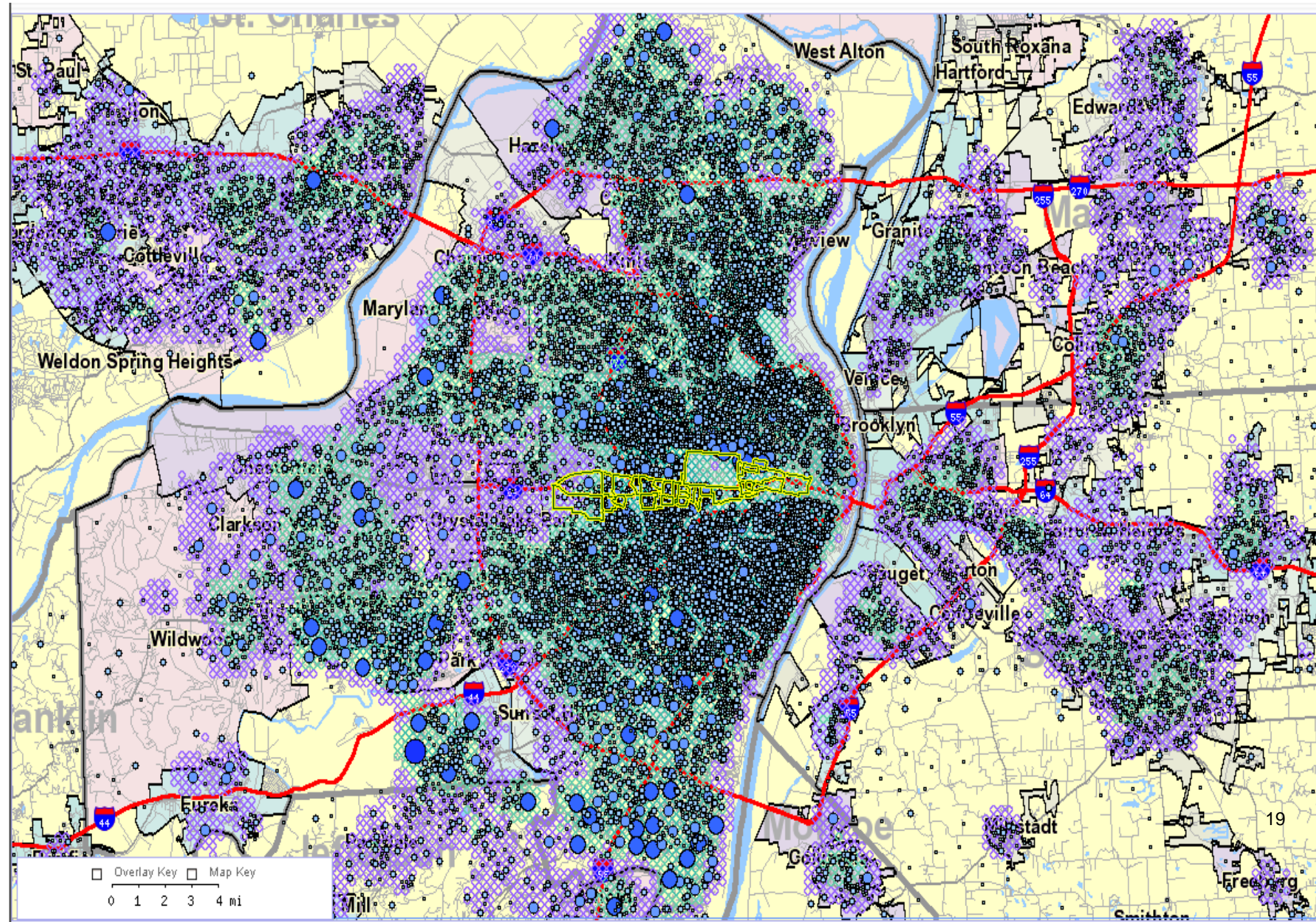
Work Location*



*Numbers based on primary job held by individuals



	2003			2002	
	Count	Share		Count	Share
Number of Jobs Held by Residents					
* All Jobs	17,206	100.00%		17,242	100.00%
* All Jobs (Private Sector Only)	15,113	87.80%		15,078	87.40%
* All Primary Jobs (Worker's highest paying job)	16,038	93.20%		16,142	93.60%
* All Primary Jobs (Private Sector Only)	14,098	81.90%		14,112	81.80%
WHERE WORKERS LIVE	2003			2002	
	Count	Share		Count	Share
Total Workers (Primary Jobs - Private Sector)	14,098	100.00%		14,112	100.00%
Cities/Towns Where Residents are Employed					
* St. Louis	3,632	25.80%		3,381	24%
* Unincorporated Areas	1,524	10.80%		1,922	13.60%
* Webster Groves	886	6.30%		855	6.10%
* Ladue	806	5.70%		986	7%
* Creve Coeur	650	4.60%		549	3.90%
* All Other Locations	6,600	46.80%		6,419	45.50%
Counties Where Residents are Employed					
* St. Louis	8,869	62.90%		9,241	65.50%
* St. Louis	3,632	25.80%		3,381	24%
* St. Charles	416	3%		285	2%
* Jefferson	192	1.40%		190	1.30%
* Jackson	162	1.10%		197	1.40%
* All Other Locations	827	5.90%		773	5.50%



The Origin Destination Application can highlight the mix of industries present in a particular community.

	2003			2002	
Columbia, Missouri	Count	Share		Count	Share
Number of Employers (Beginning of 2nd Quarter)	3,078			2,929	
Number of Jobs Held by Employed Workers:					
* All Jobs	62,387	100.00%		62,850	100.00%
* All Jobs (Private Sector Only)	41,812	67%		42,300	67.30%
* All Primary Jobs (Worker's highest paying job)	57,831	92.70%		57,948	92.20%
* All Primary Jobs (Private Sector Only)	38,358	61.50%		38,561	61.40%
	2003			2002	
	Count	Share		Count	Share
Total Jobs (All Jobs - Private Sector)	41,812	100.00%		42,300	100.00%
Jobs by Worker Age					
* Age 30 or younger	16,134	38.60%		16,182	38.30%
* Age 31 to 54	21,278	50.90%		21,809	51.60%
* Age 55 or older	4,400	10.50%		4,309	10.20%
Jobs by Earnings Paid	Count	Share		Count	Share
* \$1,200 per month or less	17,068	40.80%		17,543	41.50%
* \$1,201 to \$3,400 per month	17,697	42.30%		18,034	42.60%
* More then \$3,400 per month	7,047	16.90%		6,723	15.90%

	2003			2002	
Columbia, Missouri	Count	Share		Count	Share
Jobs by Primary Industry (2-digit NAICS)	Count	Share		Count	Share
* Agriculture, Forestry, Fishing and Hunting	15	0%		15	0%
* Mining	0	0%		0	0%
* Utilities	120	0.30%		139	0.30%
* Construction	2,244	5.40%		2,179	5.20%
* Manufacturing	2,788	6.70%		2,648	6.30%
* Wholesale Trade	1,978	4.70%		2,442	5.80%
* Retail Trade	7,122	17%		7,474	17.70%
* Transportation and Warehousing	718	1.70%		758	1.80%
* Information	1,175	2.80%		1,770	4.20%
* Finance and Insurance	2,256	5.40%		3,789	9%
* Real Estate and Rental and Leasing	857	2%		902	2.10%
* Professional, Scientific, and Technical Services	1,506	3.60%		1,438	3.40%
* Mgmt of Companies and Enterprises	2,325	5.60%		16	0%
* Admin. & Support, Waste Mgmt and Remediation	1,759	4.20%		1,933	4.60%
* Educational Services	1,168	2.80%		1,001	2.40%
* Health Care and Social Assistance	7,045	16.80%		7,252	17.10%
* Arts, Entertainment, and Recreation	577	1.40%		603	1.40%
* Accommodation and Food Services	6,321	15.10%		6,177	14.60%
* Other Services (excl. Public Admin.)	1,836	4.40%		1,764	4.20%
* Public Administration	2	0%		0	0%