

LED and TANF: What are the Possibilities

**LED Annual Conference
January 27, 2005**

Greg Weeks, Ph.D.

**Washington State Employment Security
Department**

Labor Market and Economic Analysis Branch



TANF and the Labor Force

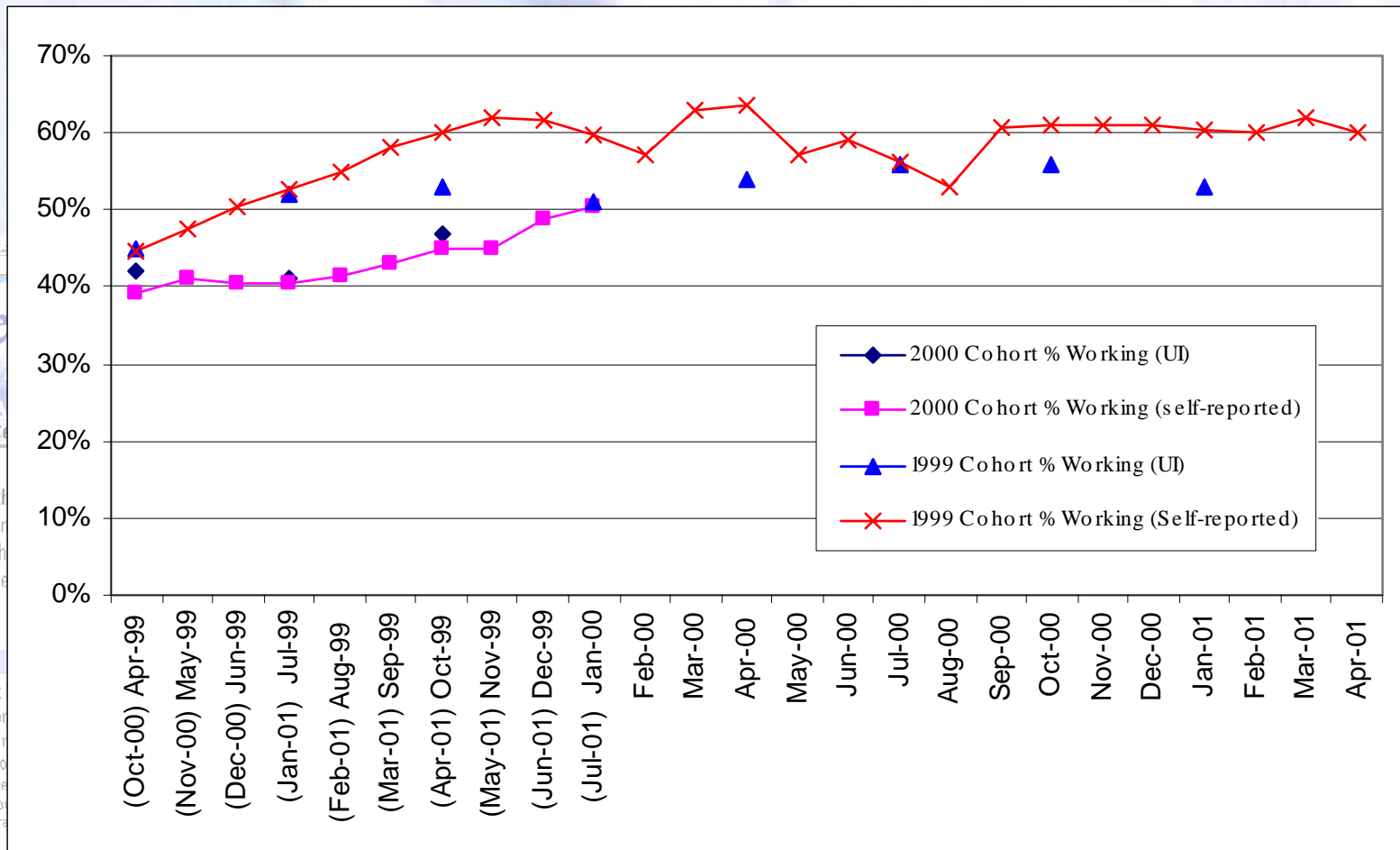
Employed
labor Force
(Covered by
LED)

The diagram consists of two overlapping circles. The left circle is blue and contains the text 'Employed labor Force (Covered by LED)'. The right circle is red and contains the text 'Employed and Not Employed TANF Participants'. The intersection of the two circles is a darker purple color.

Employed
and Not
Employed
TANF
Participants

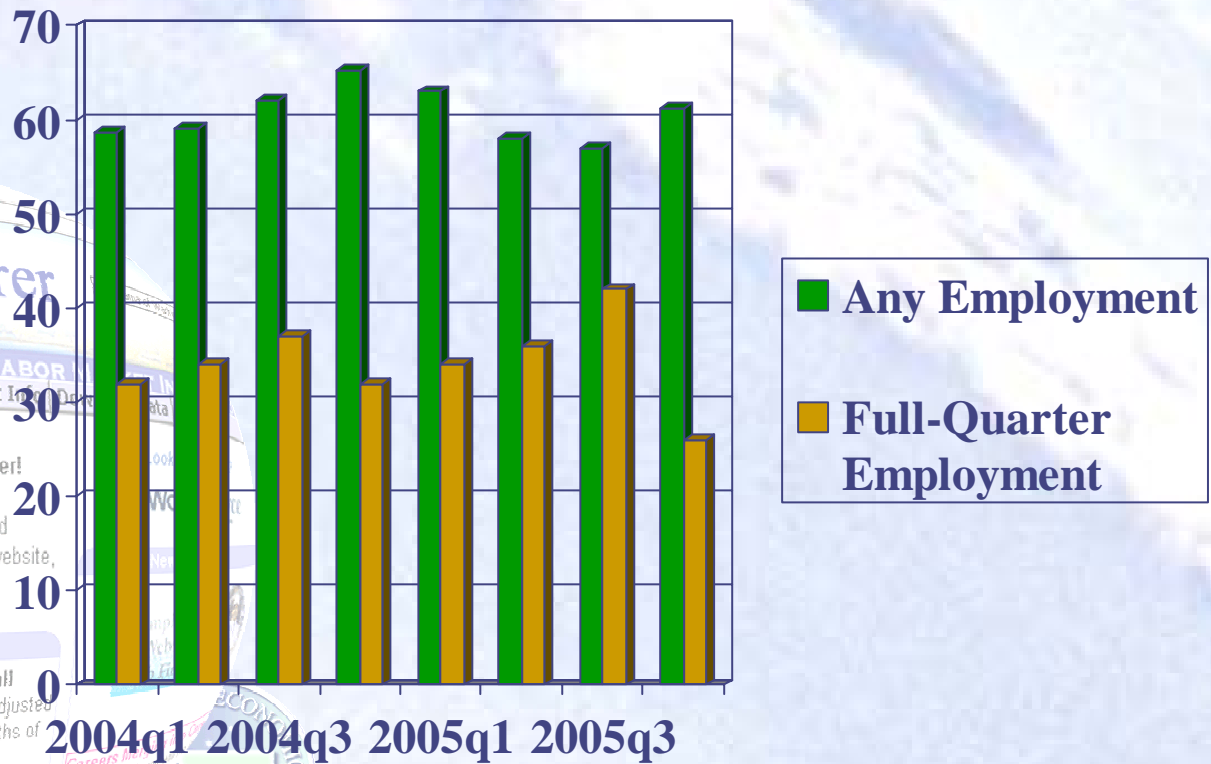


Employment of WorkFirst (TANF) Participants



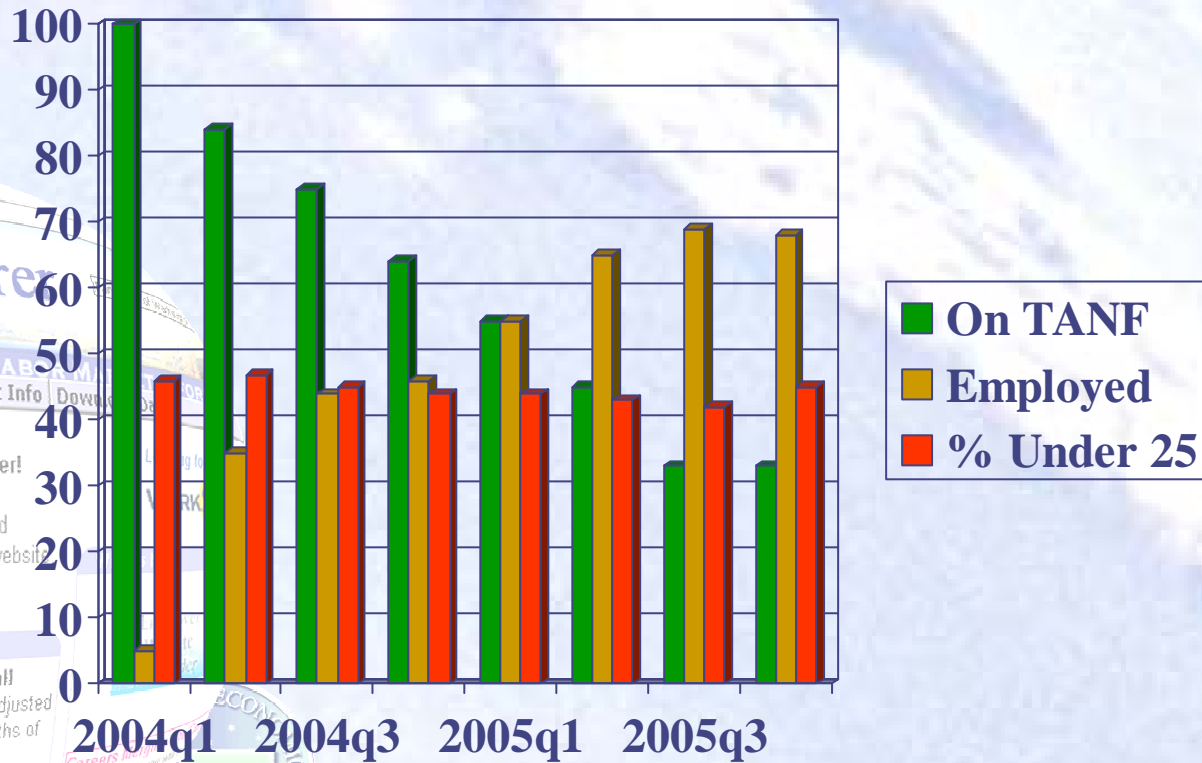
Source: Employment Security Department, LMEA

LED-based TANF Employment



Source: M.U.D. from Employment Security Department, LMEA

LED TANF Employment Information



Source: M.U.D. from Employment Security Department, LMEA

Workforce Explorer
Washington

SOURCE FOR WASHINGTON'S LABOR MARKET INFORMATION

Home | My WE | Career Center | Labor Market Info | Downloads

Welcome to the Workforce Explorer! Here you will find useful economic information to help you make informed decisions. To learn more about this website, [take the tour.](#)

Monthly Press Release

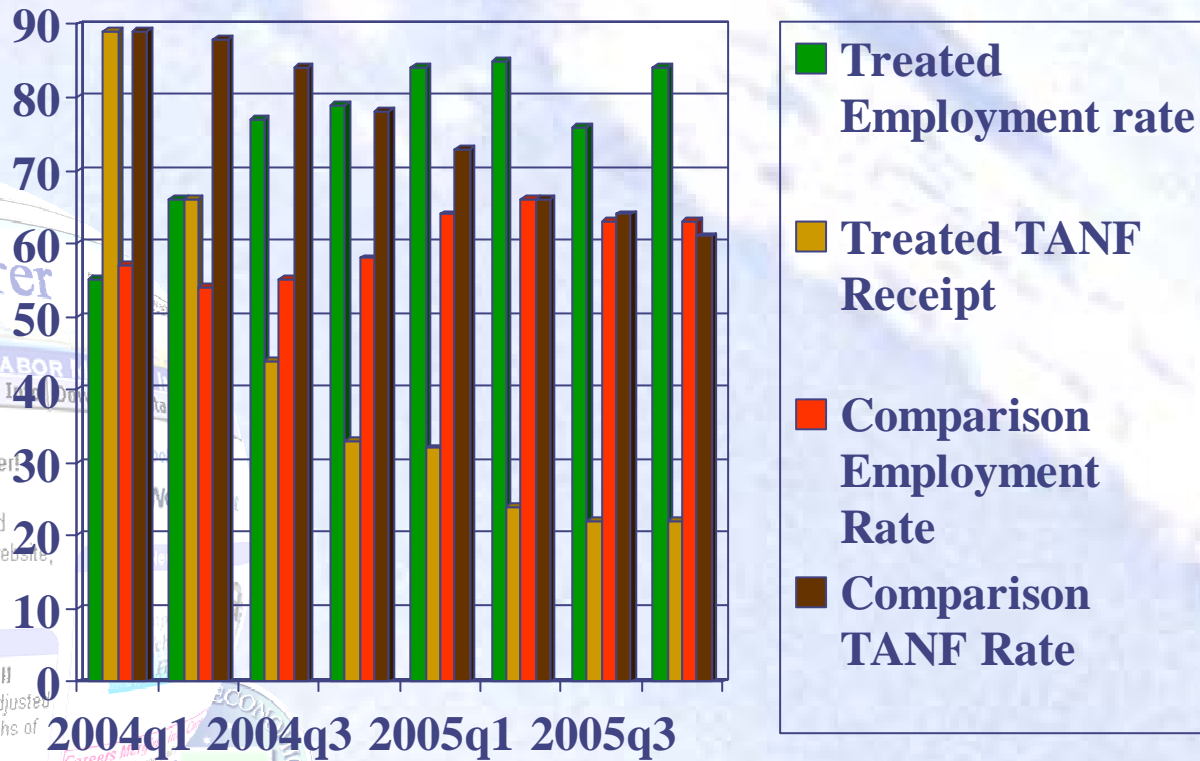
Washington's Unemployment Rate Continues to Fall

Washington's preliminary seasonally adjusted unemployment rate for May fell two-tenths of a percentage point to 6.1 percent, Employment Security Commissioner Sylvia P. Mundy announced today. The comparable national rate was unchanged in May at 5.6 percent.

6/15/2004



LED comparison of treatment/comparison employment and TANF outcomes



Workforce Explorer
Washington

SOURCE FOR WASHINGTON'S LABOR MARKET INFORMATION

Home My WE Career Center Labor Market Information

Welcome to the Workforce Explorer. Here you will find useful economic information to help you make informed decisions. To learn more about this website, [take the tour.](#)

Monthly Press Release

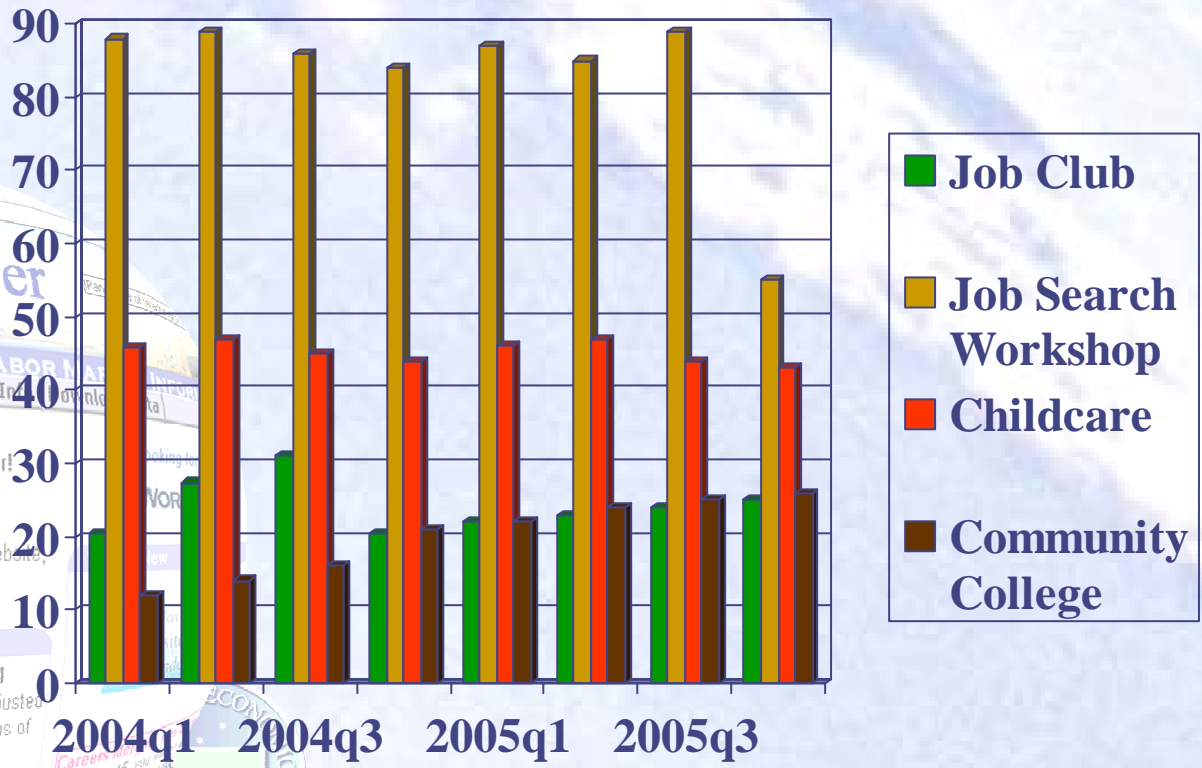
Washington's Unemployment Rate Continues to Fall

Washington's preliminary seasonally adjusted unemployment rate for May fell two-tenths of a percentage point to 6.1 percent, Employment Security Commissioner Sylvia P. Mundy announced today. The comparable national rate was unchanged in May at 5.6 percent.

As of July 15, you can find integrated information on careers in the region.

Source: M.U.D. from Employment Security Department, LMEA

Utilization of TANF Activities LaSalle County, Oregon



Source: M.U.D. from Employment Security Department, LMEA

Workforce Explorer
Washington

Source for Washington's Labor Market Information

Home | My WE | Career Center | Labor Market Information

Welcome to the Workforce Explorer! Here you will find useful economic information to help you make informed decisions. To learn more about this website, [take the tour.](#)

Press Release

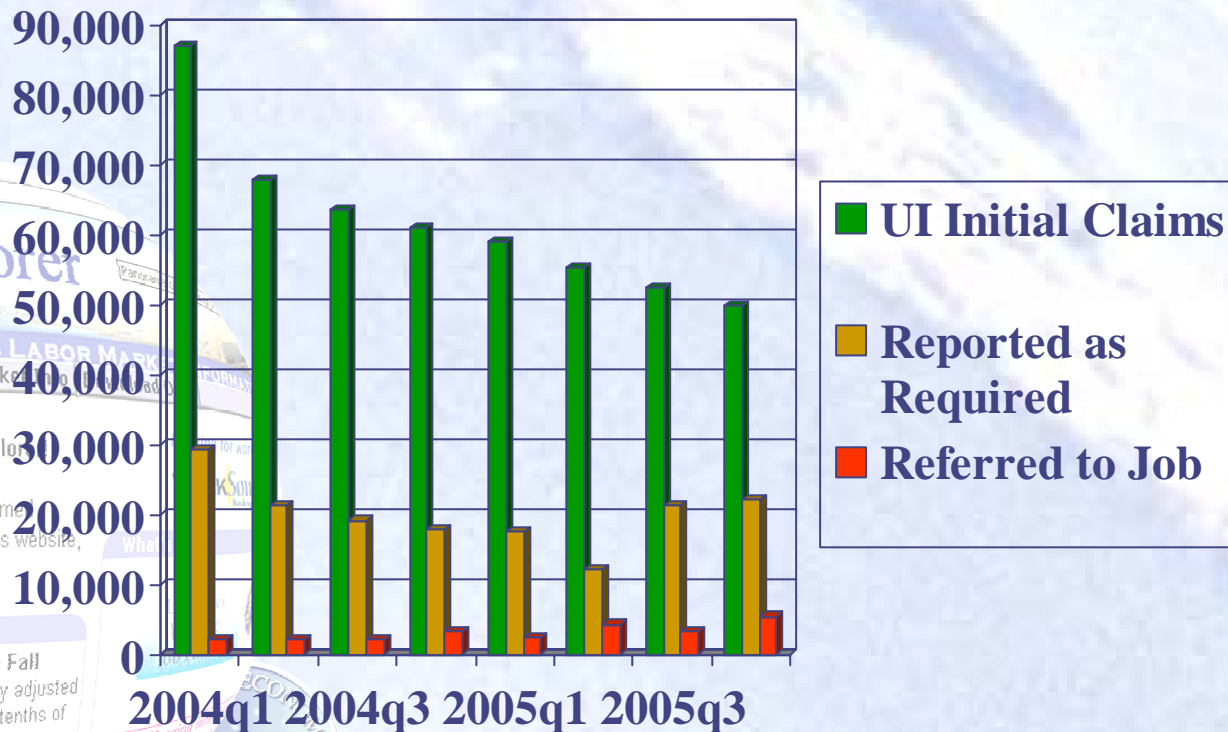
Washington's Unemployment Rate Continues to Fall

Washington's preliminary seasonally adjusted unemployment rate for May fell two-tenths of a percentage point to 6.1 percent, Employment Security Commissioner Sylvia P. Mundy announced today. The comparable national rate was unchanged in May at 5.6 percent.

As of July 15, you can find more information on the website.



LED UI Data



Source: M.U.D. from Employment Security Department, LMEA

Workforce Explorer
 Washington
 SOURCE FOR WASHINGTON'S LABOR MARKET
 Home My WE Career Center Labor Market

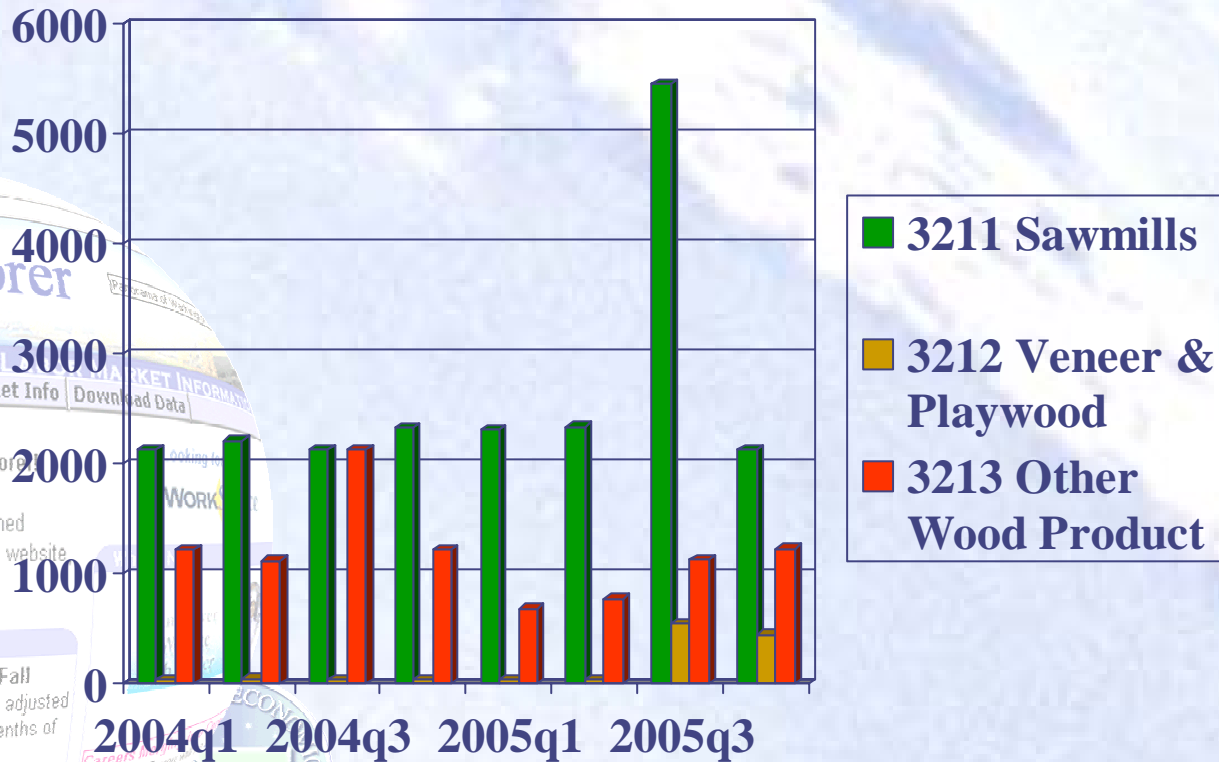
Welcome to the Workforce Explorer. Here you will find useful economic information to help you make informed decisions. To learn more about this website, [take the tour.](#)

Press Release
 Washington's Unemployment Rate Continues to Fall
 Washington's preliminary seasonally adjusted unemployment rate for May fell two-tenths of a percentage point to 6.1 percent, Employment Security Commissioner Sylvia P. Mundy announced today. The comparable national rate was unchanged in May at 5.6 percent.

Careers Meeting
 As of July 15, you can now find careers in the region integrated into the website.

LMEA

UI Claims by Industry, Lasalle County, Oregon



Source: M.U.D. from Employment Security Department, LMEA

Workforce Explorer
Washington

SOURCE FOR WASHINGTON'S LABOR MARKET INFORMATION

Home My WE Career Center Labor Market Info Download Data

Welcome to the Workforce Explorer. Here you will find useful economic information to help you make informed decisions. To learn more about this website, [take the tour.](#)

City Press Release
Washington's Unemployment Rate Continues to Fall
Washington's preliminary seasonally adjusted unemployment rate for May fell two-tenths of a percentage point to 6.1 percent, Employment Security Commissioner Sylvia P. Mundy announced today. The comparable national rate was unchanged in May at 5.6 percent.

As of July 15, you can now find integrated information on careers in the region.

LMEA

Thank You

