

LOCAL EMPLOYMENT DYNAMICS

ALL ABOUT JOBS, JOBS, AND MORE JOBS

Earlene K.P. Dowell
Lead Technical Marketing and Training Consultant
Longitudinal-Employer Household Dynamics Program
Center for Economic Studies
U.S. Census Bureau

http://onthemap.ces.census.gov/

OnTheMap

[LED Home](#) [Help and Documentation](#) [Reload](#) [Text-Only](#)

StartBase MapSelection

▼ Welcome to OnTheMap!

Start an analysis by using one of the tools below (Search, Import Geography, or Load .OTM file). Hover over the Help icons located throughout the application to see Help tips for using specific functionality. Sections in the control panel can be collapsed or opened by clicking the section title.
[Read New Data Notice \(02/21/2012\)](#)

▼ Search ⓘ

▼ Import Geography ⓘ

[Import from KML](#)
[Import from SHP](#)
[Import from GPS](#)

▼ Load .OTM File ⓘ

Click the "Load" button below to load a .OTM file.

SaveLoadFeedbackPrevious ExtentHide Tabs

OnTheMap

[LED Home](#) [Help](#) and [Documentation](#) [Reload Text-Only](#)

Start | Base Map | Selection

Save Load Feedback Previous Extent Hide Tabs

▼ Welcome to OnTheMap!

Start an analysis by using one of the tools below (Search, Import Geography, or Load .OTM file). Hover over the Help icons located throughout the application to see Help tips for using specific functionality. Sections in the control panel can be collapsed or opened by clicking the section title.


[Read New Data Notice \(05/31/2012\)](#)

▼ Search

cookeville Search

Search All Names

- States
 - No results found.
- Counties
 - No results found.
- Places (Cities, CDPs, etc.)
 - Cookeville city, TN
- ZIP Codes (ZCTA)
 - No results found.
- Metropolitan/Micropolitan Areas (CBSA)
 - Cookeville, TN
- Workforce Investment Areas (WIA)
 - No results found.
- County Subdivision
 - No results found.
- WIRED Regions (Generation 1)
 - No results found.



OnTheMap

[LED Home](#) [Help](#) and [Documentation](#) [Reload Text-Only](#)

Start | Base Map | Selection

Save Load Feedback Previous Extent Hide Tabs

▼ Welcome to OnTheMap!

Start an analysis by using one of the tools below (Search, Import Geography, or Load .OTM file). Hover over the Help icons located throughout the application to see Help tips for using specific functionality. Sections in the control panel can be collapsed or opened by clicking the section title.

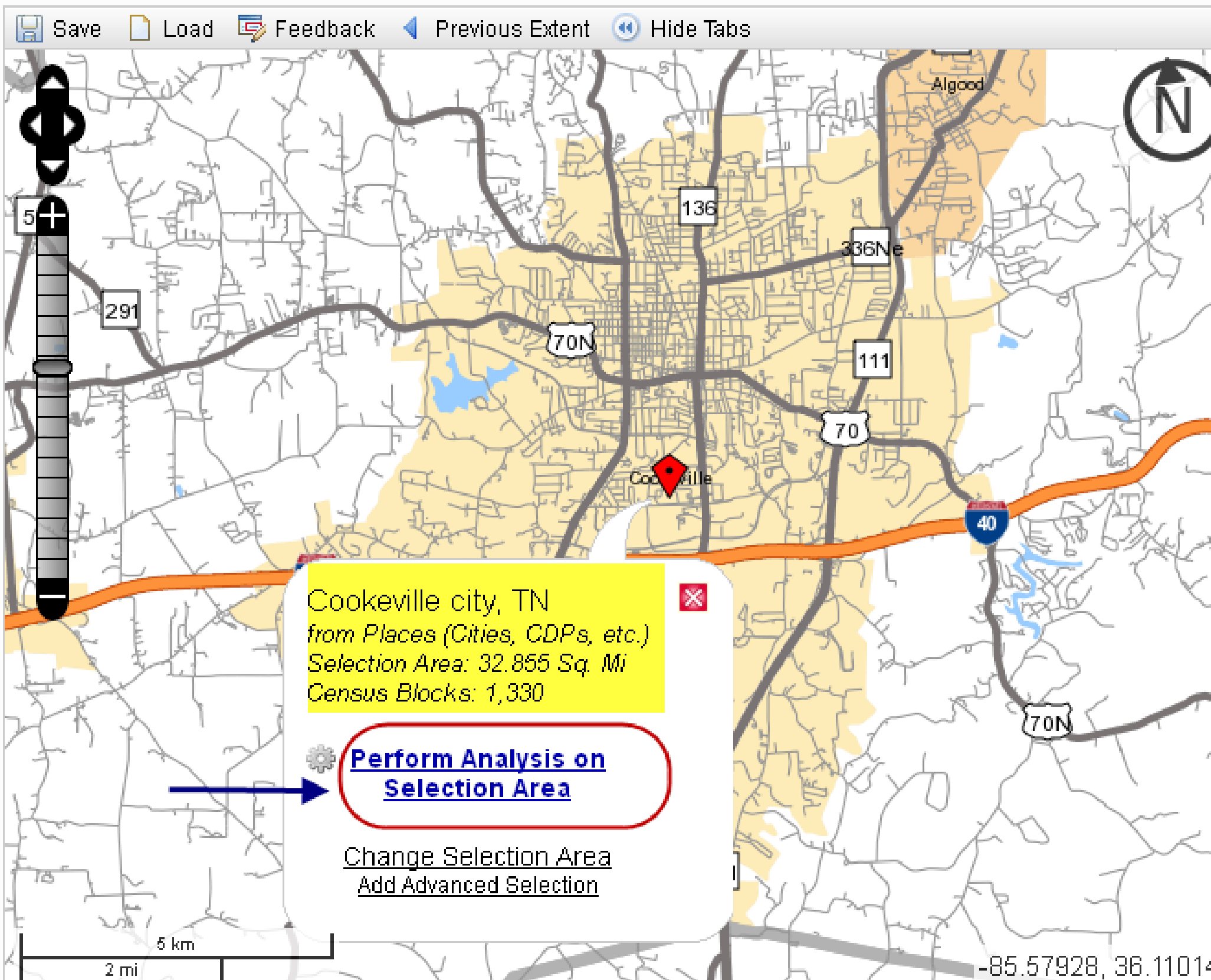
[Read New Data Notice \(05/31/2012\)](#)

▼ Search

cookeville Search

Search All Names

- States
 - No results found.
- Counties
 - No results found.
- Places (Cities, CDPs, etc.)
 - Cookeville city, TN
- ZIP Codes (ZCTA)
 - No results found.
- Metropolitan/Micropolitan Areas (CBSA)
 - Cookeville, TN
- Workforce Investment Areas (WIA)
 - No results found.
- County Subdivision
 - No results found.
- WIRED Regions (Generation 1)
 - No results found.



Cookeville city, TN
from Places (Cities, CDPs, etc.)
Selection Area: 32.855 Sq. Mi
Census Blocks: 1,330

[Perform Analysis on Selection Area](#)

[Change Selection Area](#)
[Add Advanced Selection](#)

Analysis Settings

Analysis Settings

Area Profile Analysis in 2002, 2009 and 2010 by Primary Jobs

Home/Work Area ?
Determines whether the selection area is analyzed on where workers live ("Home") or where workers are employed ("Work").
☐ Home
☒ Work

Analysis Type ?
Determines the type of results that will be generated for the selected area.
☒ **Area Profile**
Labor Market Segment:
All Workers ▼
☐ **Area Comparison**
Areas to Compare:
Places (Cities, CDPs, etc.) ▼
Labor Market Segment:
All Workers ▼
☐ **Distance/Direction**
☐ **Destination**
Destination Type:
Places (Cities, CDPs, etc.) ▼
☐ **Inflow/Outflow**
Note: Home/Work choice does not affect results

Year ?
Determines the year(s) of data that will be processed in the analysis.
☒ 2010
☒ 2009
☐ 2008
☐ 2007
☐ 2006
☐ 2005
☐ 2004
☐ 2003
☒ 2002

Job Type ?
Determines the scope of jobs that will be processed in the analysis.
☐ All Jobs
☒ **Primary Jobs**
☐ All Private Jobs
☐ Private Primary Jobs

Cancel **Go!**

All Jobs: All public and private-sector jobs.

Primary Jobs: Public and private-sector jobs, one job per worker. A primary job is the highest paying job for an individual worker.

Private Jobs: All private-sector jobs.

Private Primary Jobs: Private-sector jobs, one job per worker. A primary job is the highest paying job for an individual worker.

Note: Jobs are defined as "Beginning of Quarter Employment" for the 2nd quarter. Beginning of Quarter Employment is the total number of workers who were employed by the same employer in both the current (2nd) and previous (1st) quarter.

generated for the selected area.

Area Profile

Labor Market Segment:

All Workers ▼

All Workers

Age 29 or younger

Age 30 to 54

Age 55 or older

Destination \$1,250 per month or less

Destination \$1,251 to \$3,333 per month

Destination More than \$3,333 per month

Inflow/Outflow Goods Producing

Trade, Transportation, and Utilities

year(s) of data that will be processed in the analysis.

☒ 2010

☐ 2009

☐ 2008

☐ 2007

☐ 2006

Area Comparison

Areas to Compare:

Places (Cities, CDPs, etc.) ▼

States

Counties

Places (Cities, CDPs, etc.)

ZIP Codes (ZCTA)

Metropolitan/Micropolitan Areas (CBSA)

Workforce Investment Areas (WIA)

County Subdivision

WIRED Regions (Generation 1)

WIRED Regions (Generation 2)

Places (Cities, CDPs, etc.) ▼

States

Counties

Places (Cities, CDPs, etc.)

ZIP Codes (ZCTA)

Metropolitan/Micropolitan Areas (CBSA)

Workforce Investment Areas (WIA)

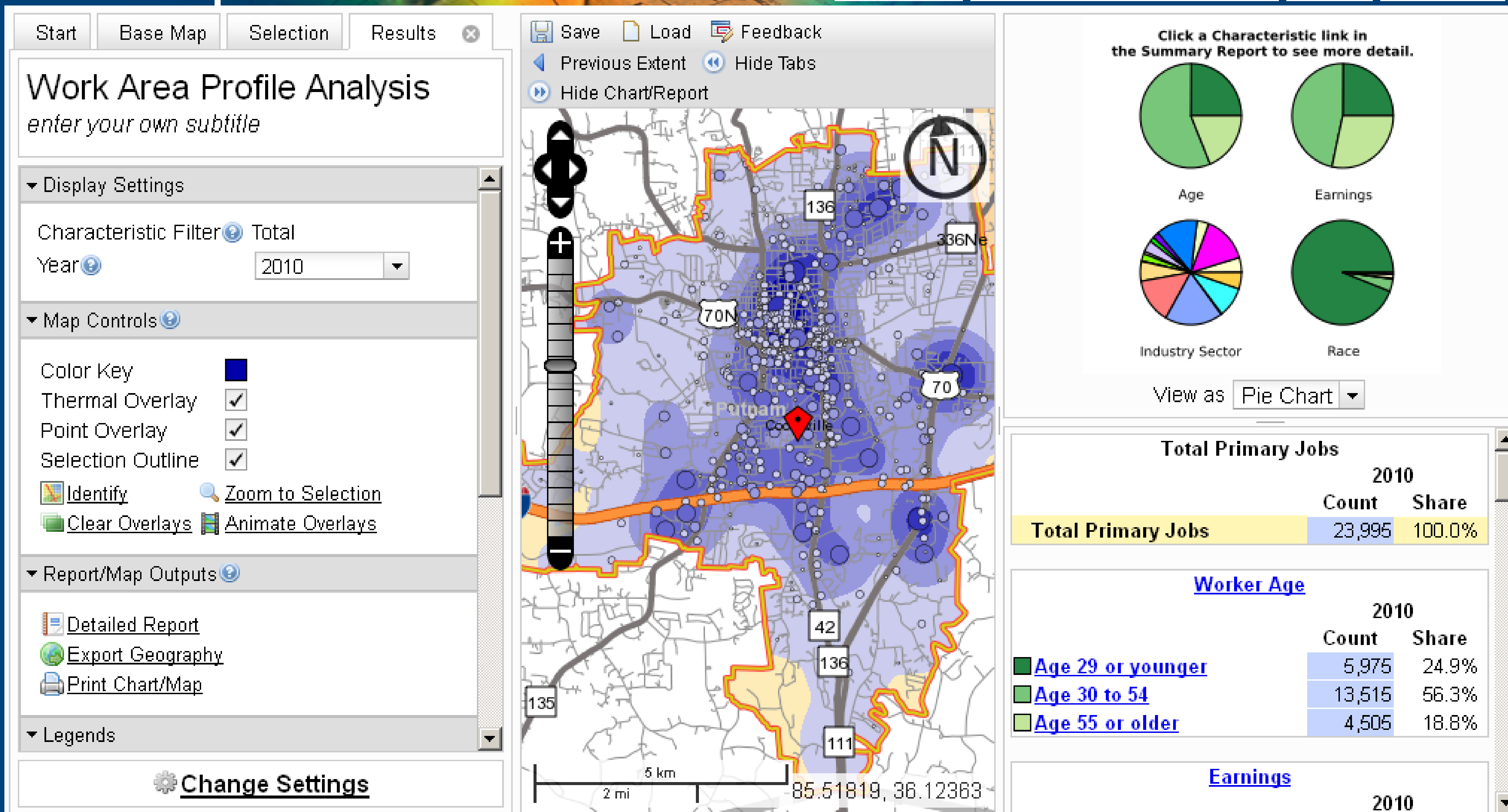
County Subdivision

WIRED Regions (Generation 1)

WIRED Regions (Generation 2)

Area Profile

OnTheMap

[LED Home](#) [Help and Documentation](#) [Reload](#) [Text-Only](#)


Display Settings

OnTheMap

Use Map Selection Results

Work Area Profile Analysis

Cookeville, TN - TN MUG Training

▼ Display Settings

Characteristic Filter ? Total

Year ? 2010

▼ Map Controls ?

OnTheMap

Start Base Map Selection Results

Work Area Profile Analysis

Cookeville, TN - TN MUG Training

▼ Display Settings

Characteristic Filter ? Total

Year ? 2002

▼ Map Controls ?

Color Key ?

Thermal Overlay ☒

Point Overlay ☒

Selection Outline ☒

Identify ? Zoom to Selection ?

Clear Overlays ? Animate Overlays ?

▼ Report/Map Outputs ?

Detailed Report ?

Export Geography ?

Print Chart/Map ?

▼ Legends

[Change Settings](#)

Save Load Feedback

Previous Extent Hide Tabs

Hide Chart/Report

LED Home Help and Documentation Reload Text-Only

Click a Characteristic link in the Summary Report to see more detail.

Age Earnings

Industry Sector

View as Bar Chart

Total Primary Jobs

	2002
	Count Share
Total Primary Jobs	24,958 100.0%

[Worker Age](#)

	2002
	Count Share
Age 29 or younger	6,620 26.5%
Age 30 to 54	14,591 58.5%
Age 55 or older	3,747 15.0%

[Earnings](#)

2002

Start Base Map Selection Results

Save Load Feedback

Previous Extent Hide Tabs

Hide Chart/Report

Work Area Profile Analysis

Cookeville, TN - TN MUG Training

▼ Display Settings

Characteristic Filter ? Total

Year ? 2010

▼ Map Controls ?

Color Key ?

Thermal Overlay ☒

Point Overlay ☒

Selection Outline ☒

Identify ? Zoom to Selection ?

Clear Overlays ? Animate Overlays ?

▼ Report/Map Outputs ?

Detailed Report ?

Export Geography ?

Print Chart/Map ?

▼ Legends

[Change Settings](#)

Click a **Characteristic** in the summary report to filter the jobs/workers displayed in the analysis results. The map overlays, chart, and summary report will automatically update to display jobs in the selected filter.

Results can be filtered by *Worker Age, Earnings, NAICS Industry Sector, Worker Race, Worker Ethnicity, Worker Educational Attainment, or Worker Sex* characteristics. Including *Total*, there are 41 characteristics available to filter the analysis results.

Note: *Race, Ethnicity, Educational Attainment, and Sex* data are only available for 2009 and 2010.

Summary Report

View as **Pie Chart**

Worker Age

	2010	
	Count	Share
Age 29 or younger	5,975	24.9%
Age 30 to 54	13,515	56.3%
Age 55 or older	4,505	18.8%

Earnings

	2010	
	Count	Share
\$1,250 per month or less	5,980	24.9%
\$1,251 to \$3,333 per month	11,189	46.6%
More than \$3,333 per month	6,826	28.4%

NAICS Industry Sector

	2010	
	Count	Share
Agriculture, Forestry, Fishing and Hunting	4	0.0%
Mining, Quarrying, and Oil and Gas Extraction	19	0.1%
Utilities	0	0.0%
Construction	1,060	4.4%
Manufacturing	3,440	14.3%
Wholesale Trade	876	3.7%
Retail Trade	3,124	13.0%
Transportation and Warehousing	474	2.0%

OnTheMap

[LED Home](#) [Help and Documentation](#) [Reload](#) [Text-Only](#)

Base Map Selection Results

Work Area Profile Analysis

Cookeville, TN - TN MUG Training

Display Settings

Characteristic Filter

NAICS Industry Sector: Transportation and Warehousing

Year 2010

Map Controls

Color Key

Thermal Overlay

Point C

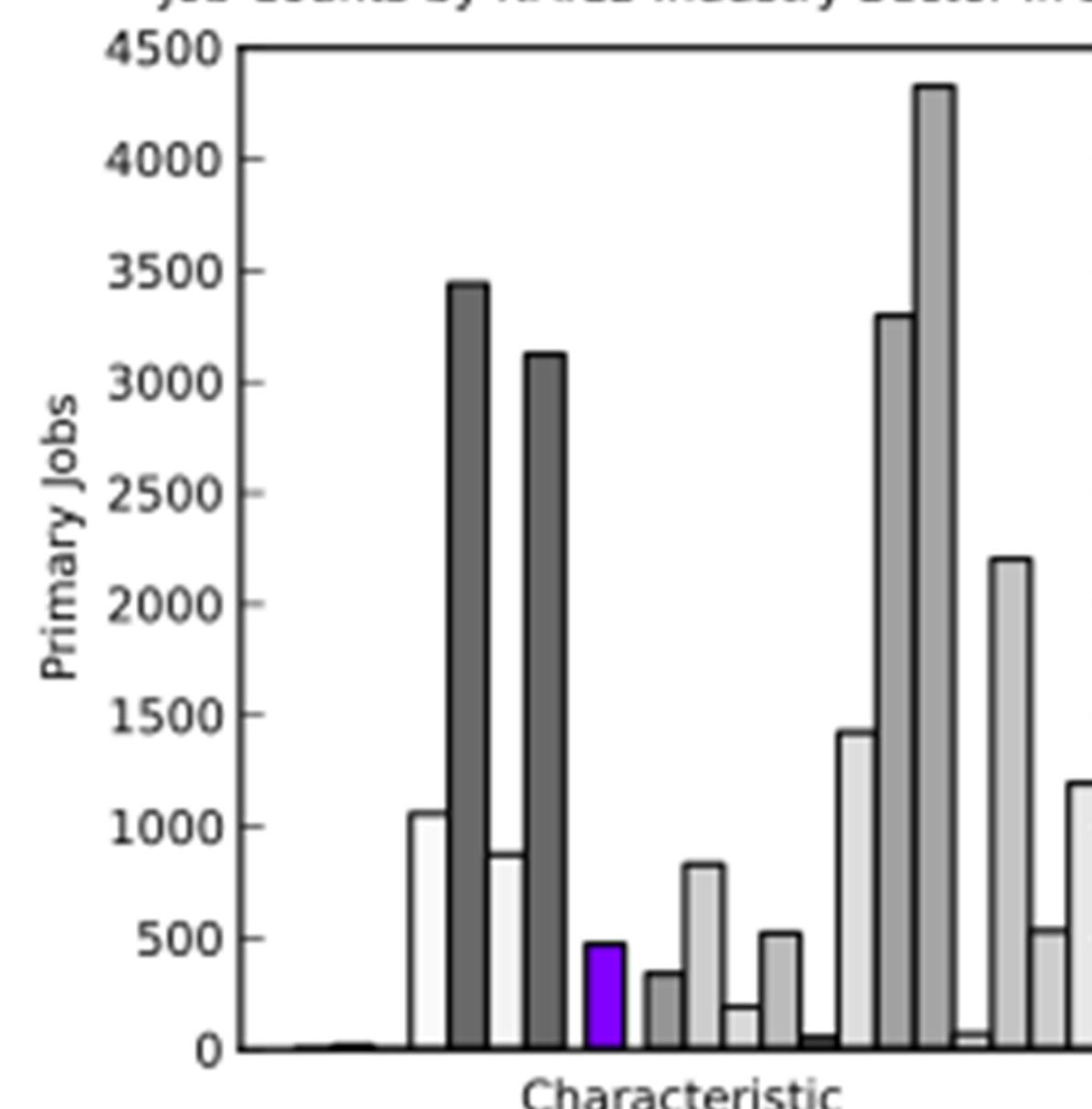
Select

Ident

Clear

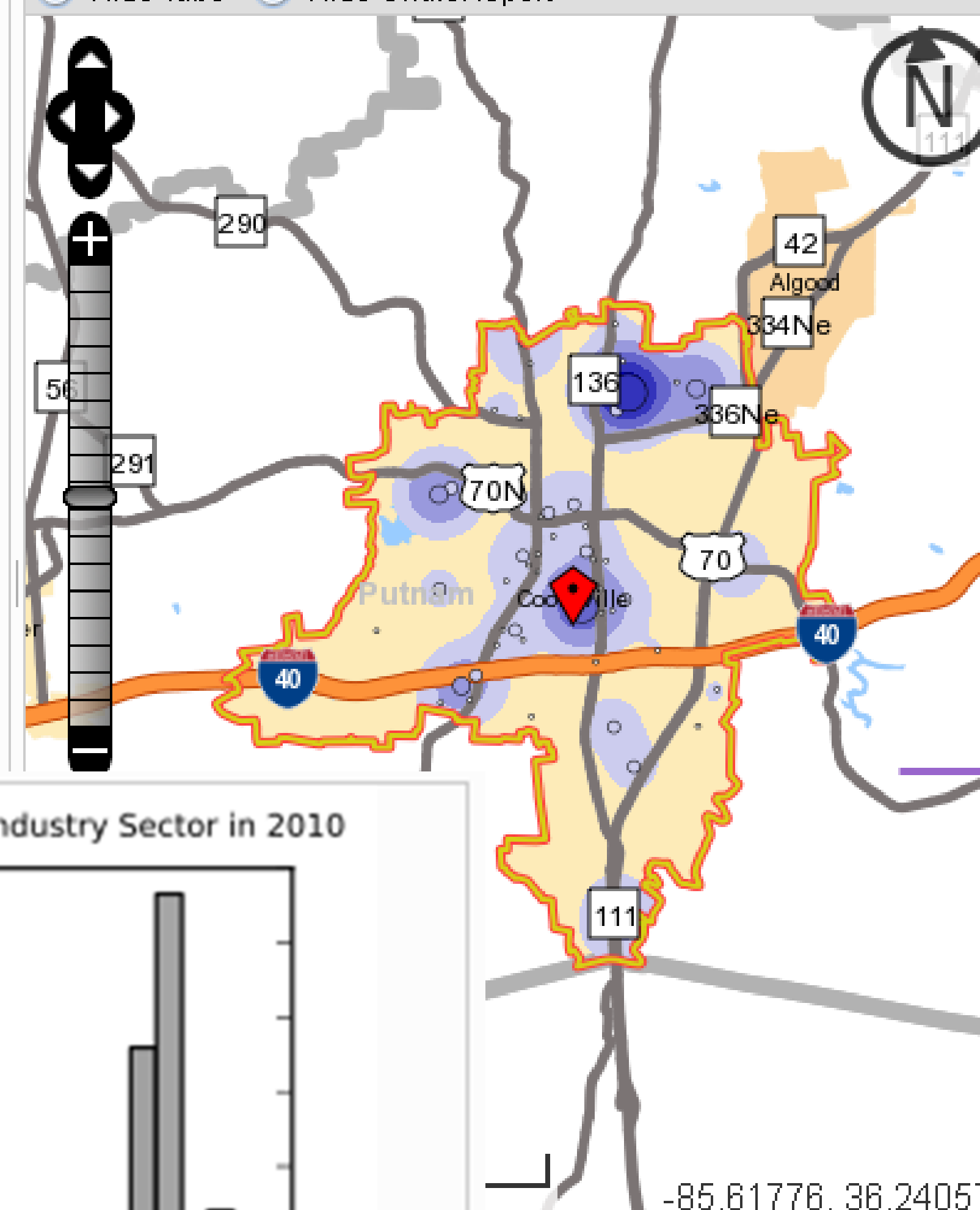
Report

Job Counts by NAICS Industry Sector in 2010

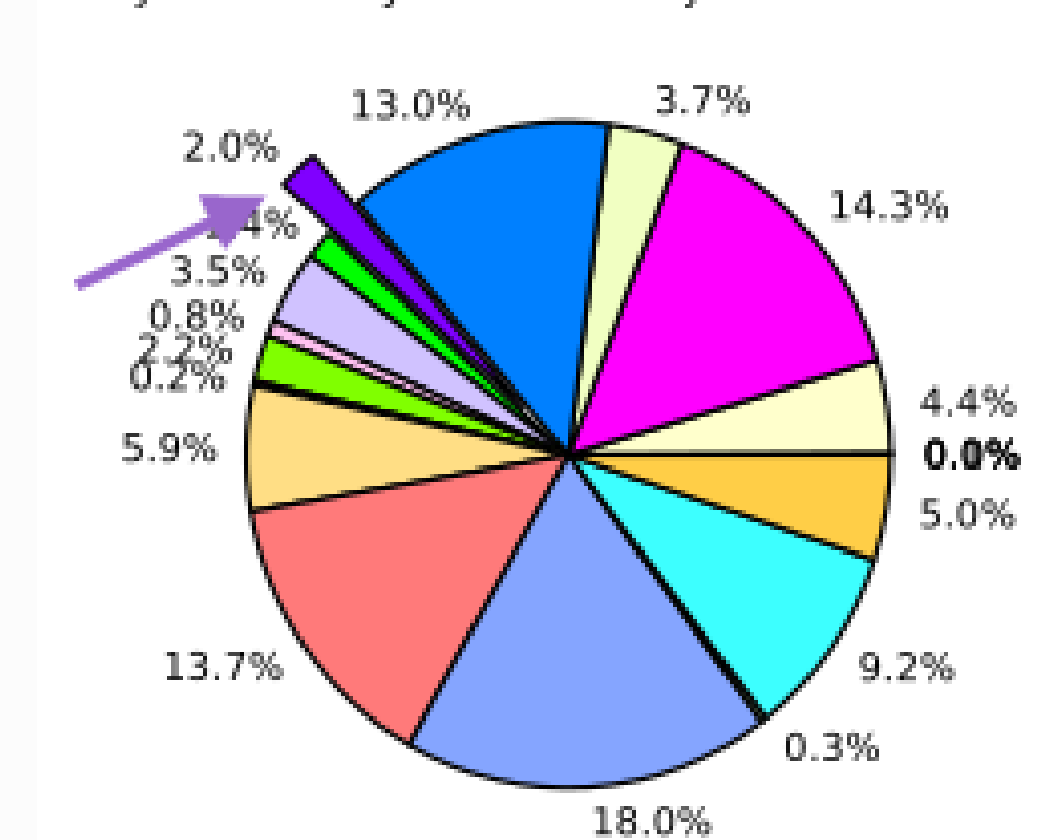
View as **Bar Chart**

Save Load Feedback Previous Extent

Hide Tabs Hide Chart/Report



Job Counts by NAICS Industry Sector in 2010

View as **Pie Chart**

Wholesale Trade	876	3.7%
Retail Trade	3,124	13.0%
Transportation and Warehousing	474	2.0%
Information	342	1.4%
Finance and Insurance	832	3.5%
Real Estate and Rental and Leasing	192	0.8%
Professional, Scientific, and Technical Services	523	2.2%
Management of Companies and Enterprises	56	0.2%

Analysis Settings and Change Settings

OnTheMap

[LED Home](#) [Help and Documentation](#) [Reload](#) [Text-Only](#)
[Start](#) [Base Map](#) [Selection](#) [Results](#)

Work Area Profile Analysis

enter your own subtitle

- ▶ Display Settings
- ▶ Map Controls
- ▶ Report/Map Outputs
- ▶ Legends
- ▼ **Analysis Settings**

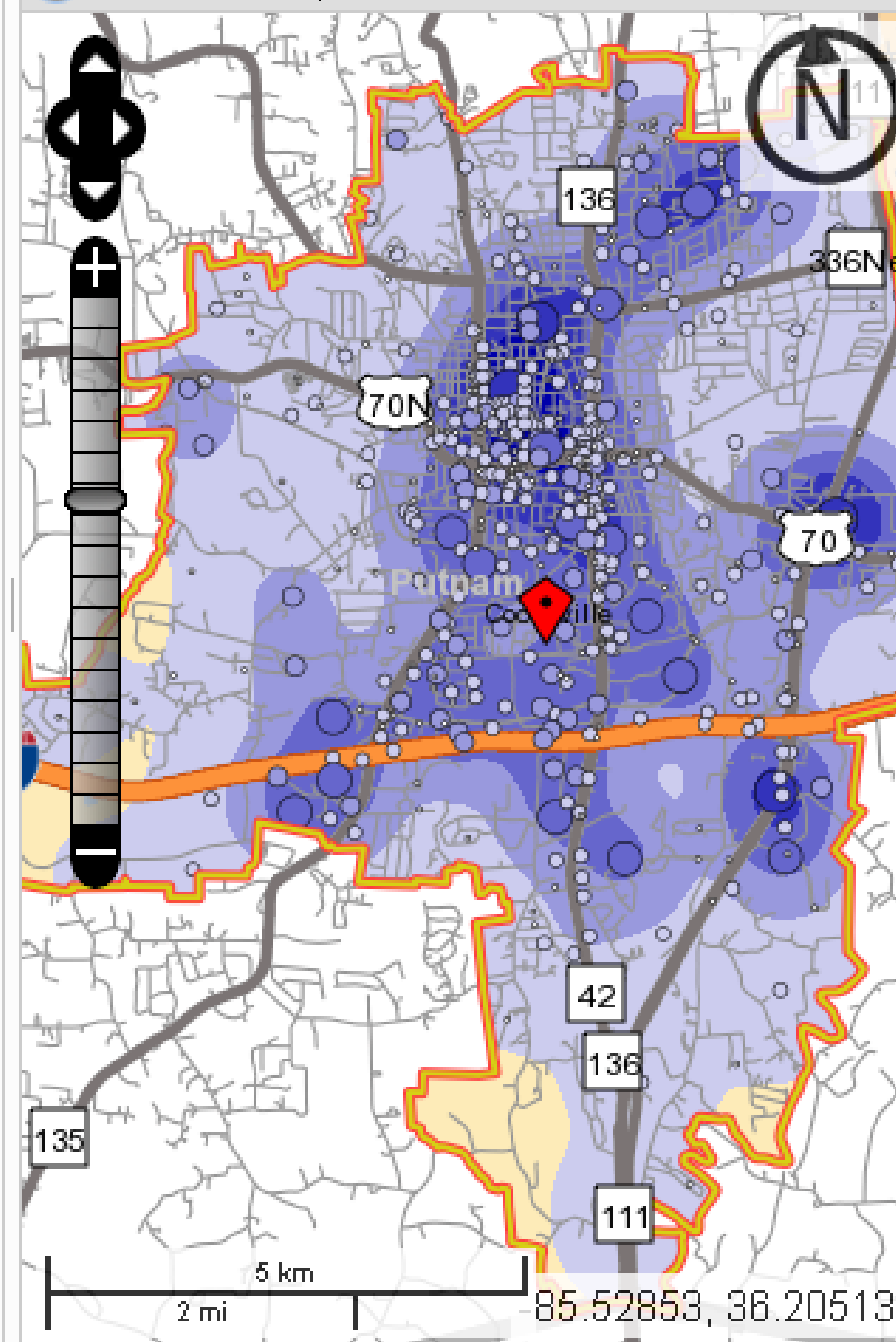
Analysis Type	Area Profile
Selection area as	Work
Year(s)	2010
Job Type	Primary Jobs
Labor Market Segment	All Workers
Selection Area	Cookeville city, TN from Places (Cities, CDPs, etc.)
Selected Census Blocks	1,330
Analysis Generation Date	07/26/2012 12:13 - OnTheMap 6.1
Code Revision	8f927194285c+
LODES Data Version	20120531

[Change Settings](#)

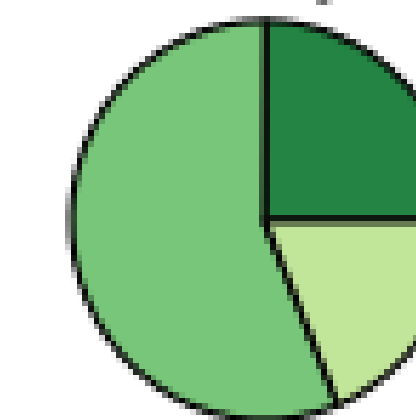
[Save](#)
[Load](#)
[Feedback](#)

[Previous Extent](#)
[Hide Tabs](#)

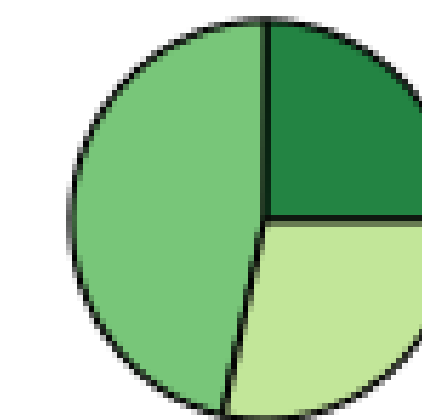
[Hide Chart/Report](#)



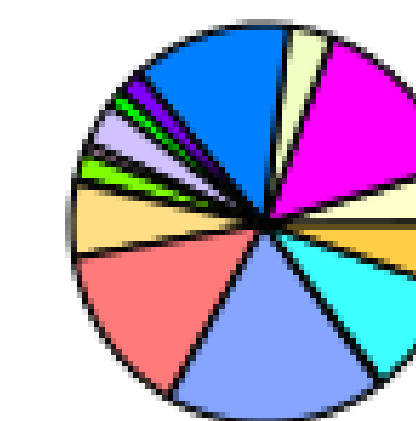
Click a Characteristic link in the Summary Report to see more detail.



Age



Earnings



Industry Sector



Race

View as [Pie Chart](#)

Total Primary Jobs

	2010	
	Count	Share
Total Primary Jobs	23,995	100.0%

Worker Age

	2010	
	Count	Share
Age 29 or younger	5,975	24.9%
Age 30 to 54	13,515	56.3%
Age 55 or older	4,505	18.8%

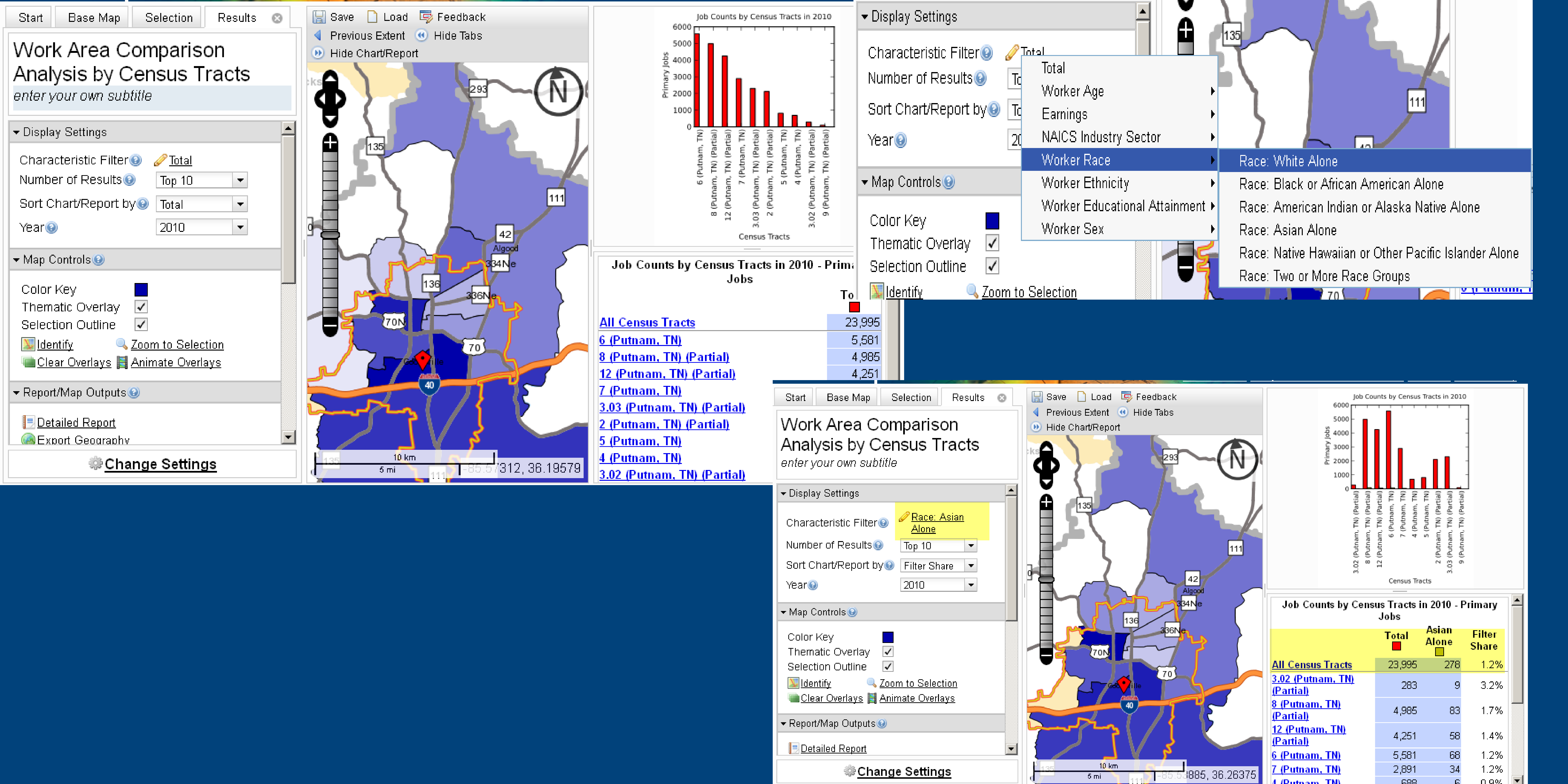
Earnings

2010

Area Comparison

OnTheMap

[LED Home](#) [Help and Documentation](#) [Reload Text-Only](#)



Map Controls

OnTheMap [LED Home](#) [Help and Documentation](#) [Reload](#) [Text-Only](#)

Start Base Map Selection Results

Save Load Feedback

Previous Extent Hide Tabs

Hide Chart/Report

Work Area Comparison

Analysis by Census Tracts

enter your own subtitle

▼ Display Settings

Characteristic Filter Total

Number of Results Top 10

Sort Chart/Report by Total

Year 2010

▼ Map Controls

Color Key

Thematic Overlay ☒

Selection Outline ☒

Identify Zoom to Selection

Clear Overlays Animate Overlays

▼ Report/Map Outputs

Detailed Report

Export Geography

Change Settings

Job Counts by Census Tracts in 2010

Primary jobs

Census Tracts

Job Counts by Census Tracts

Jobs

[All Census Tracts](#)

[6 \(Putnam, TN\)](#)

[8 \(Putnam, TN\) \(Partial\)](#)

[12 \(Putnam, TN\) \(Partial\)](#)

[7 \(Putnam, TN\)](#)

[3.03 \(Putnam, TN\) \(Partial\)](#)

[2 \(Putnam, TN\) \(Partial\)](#)

[5 \(Putnam, TN\)](#)

[4 \(Putnam, TN\)](#)

[3.02 \(Putnam, TN\) \(Partial\)](#)

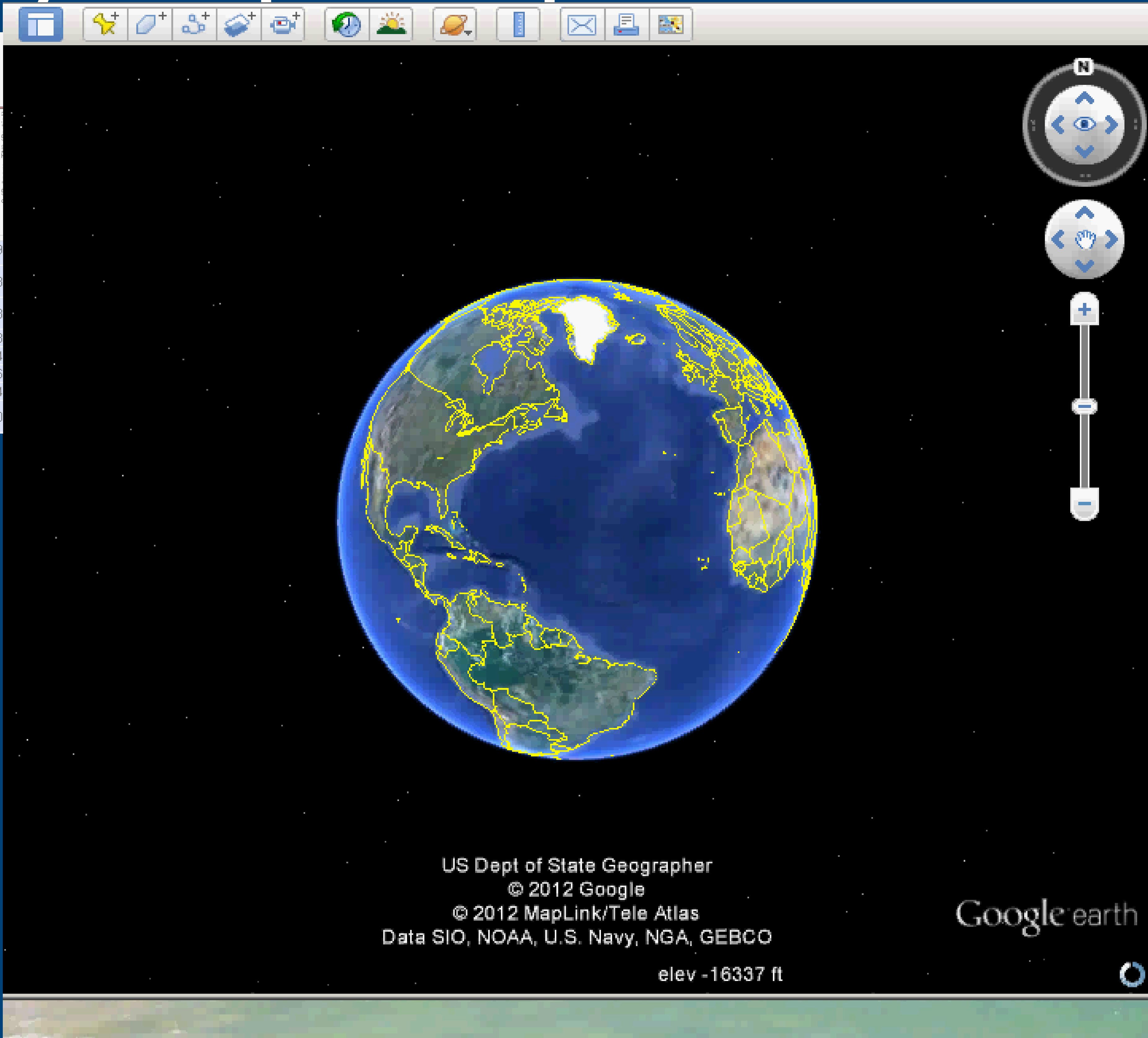
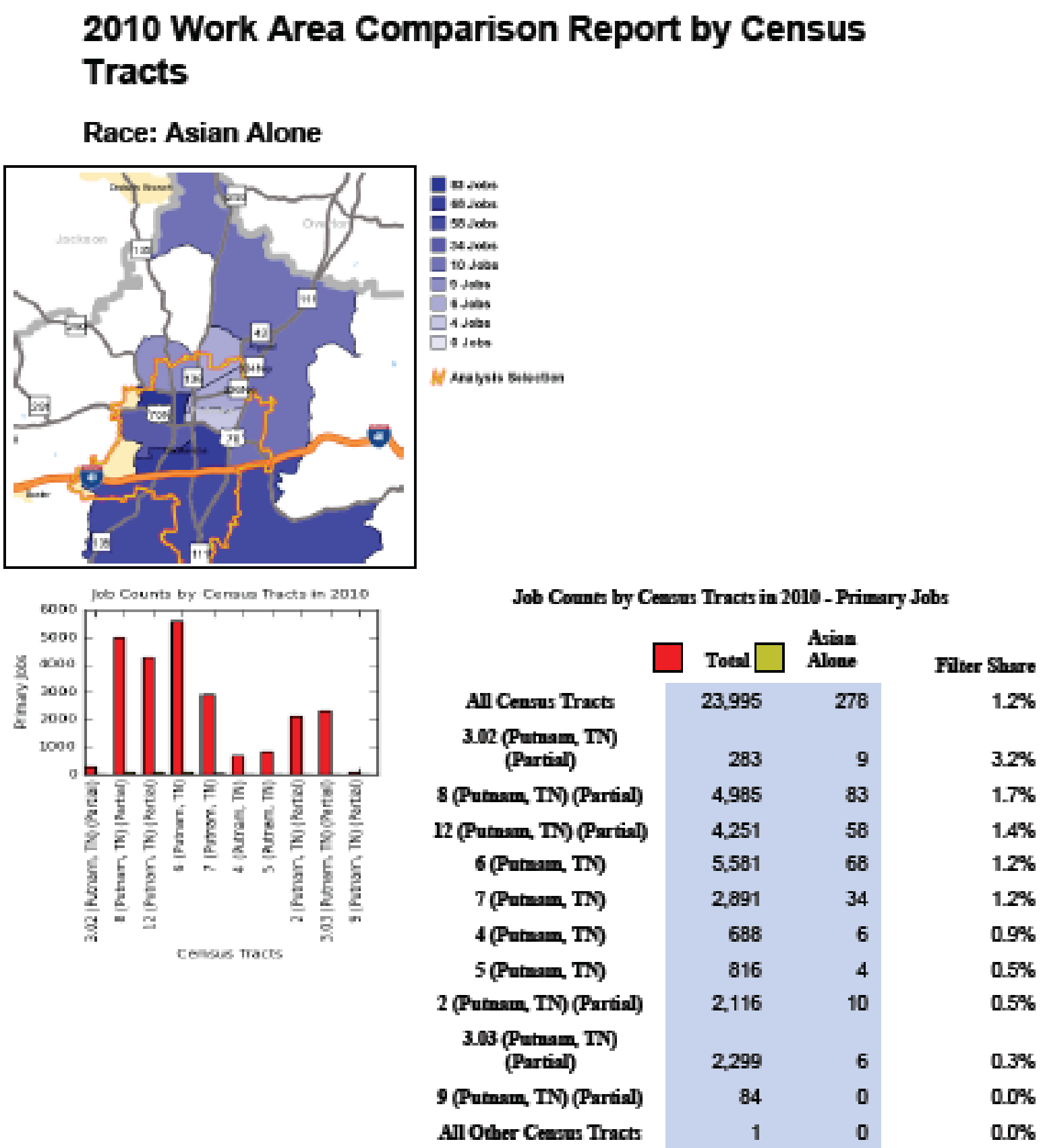
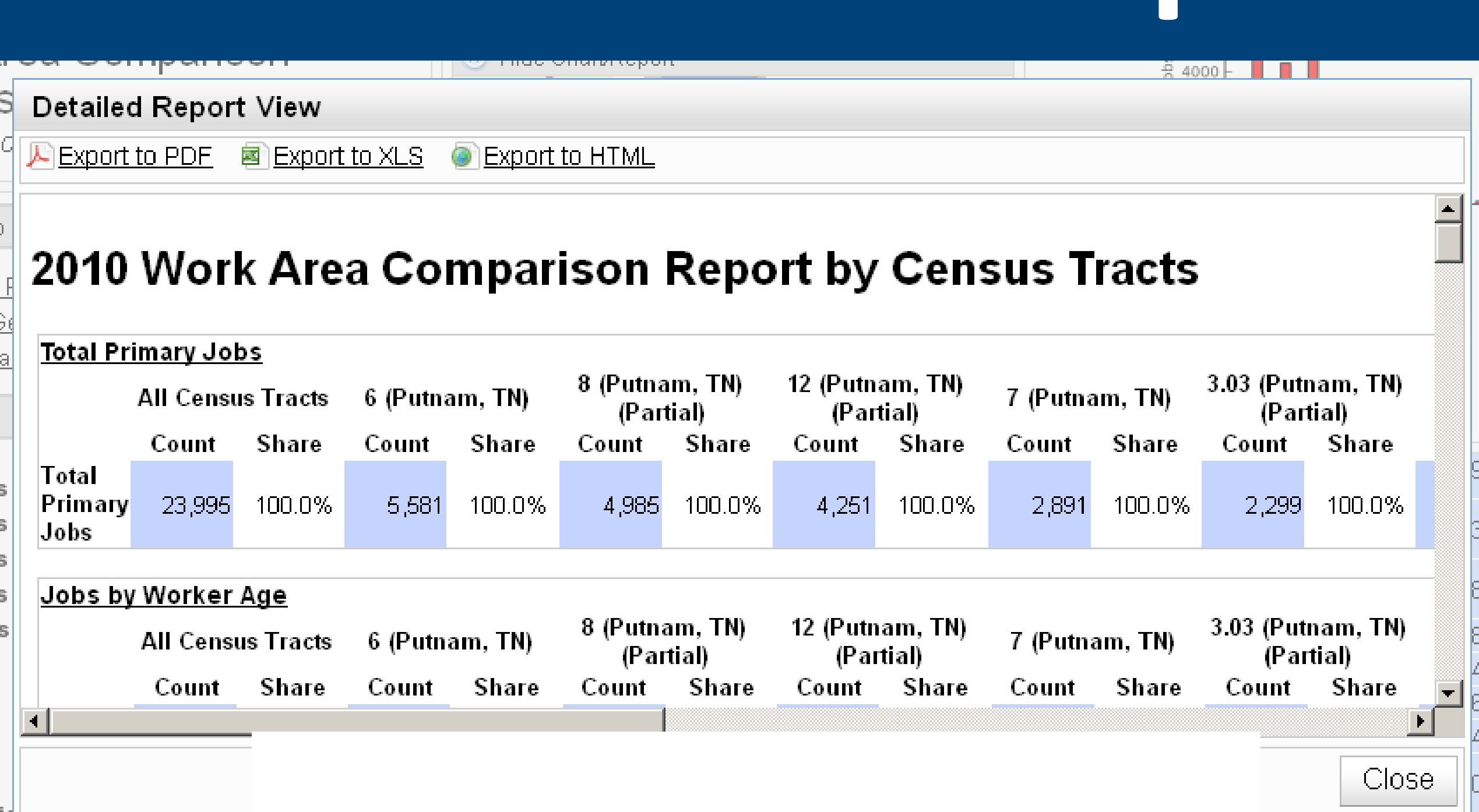
Identify

7 (Putnam, TN) 2010

Total	
Total	2,891
Worker Age	
Age 29 or younger	1,030
Age 30 to 54	1,441
Age 55 or older	420

Close

Report/Map Outputs



ACTIVITY TIME

Area Profile and Area Comparison

1. What are the characteristics and distribution of workers employed or living in Cookeville, TN in 2010?

- How many workers are employed in the city? Where are the highest concentrations of employment?
- What are the three most dominant industries by employment in the city. What are the spatial distributions of employment in these industries different?
- How many workers live in the city? How do the characteristics of working residents compare to the characteristics of workers?

2. How does Cookeville City's employment compare to other cities in the Cookeville City Metro area in 2010?

- Is Cookeville City in the Top 10 in employment among the metro area's cities?
- Is Cookeville City in the Top 10 in share of employment among the metro area's cities in Manufacturing? What about Accommodation and Food Services?

Distance / Direction

OnTheMap

[LED Home](#) [Help and Documentation](#) [Reload](#) [Text-Only](#)

Start Base Map Selection Results

Distance/Direction Analysis

Work to Home

Display Settings

Labor Market Segment
Filter

All Workers

Year

2010

Map Controls

Color Key

Thermal Overlay



Point Overlay



Selection Outline

[Zoom to Selection](#)[Animate Overlays](#)

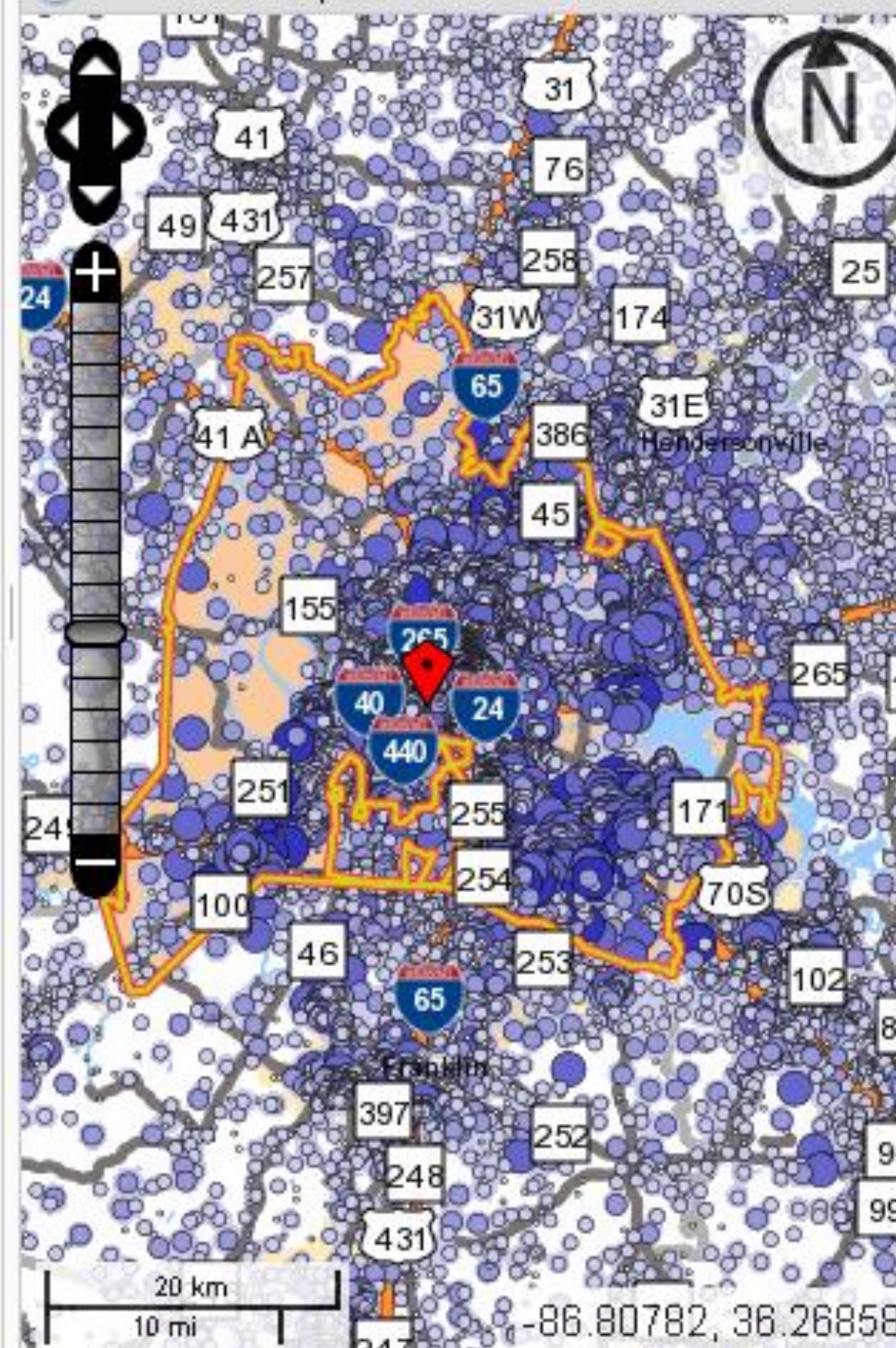
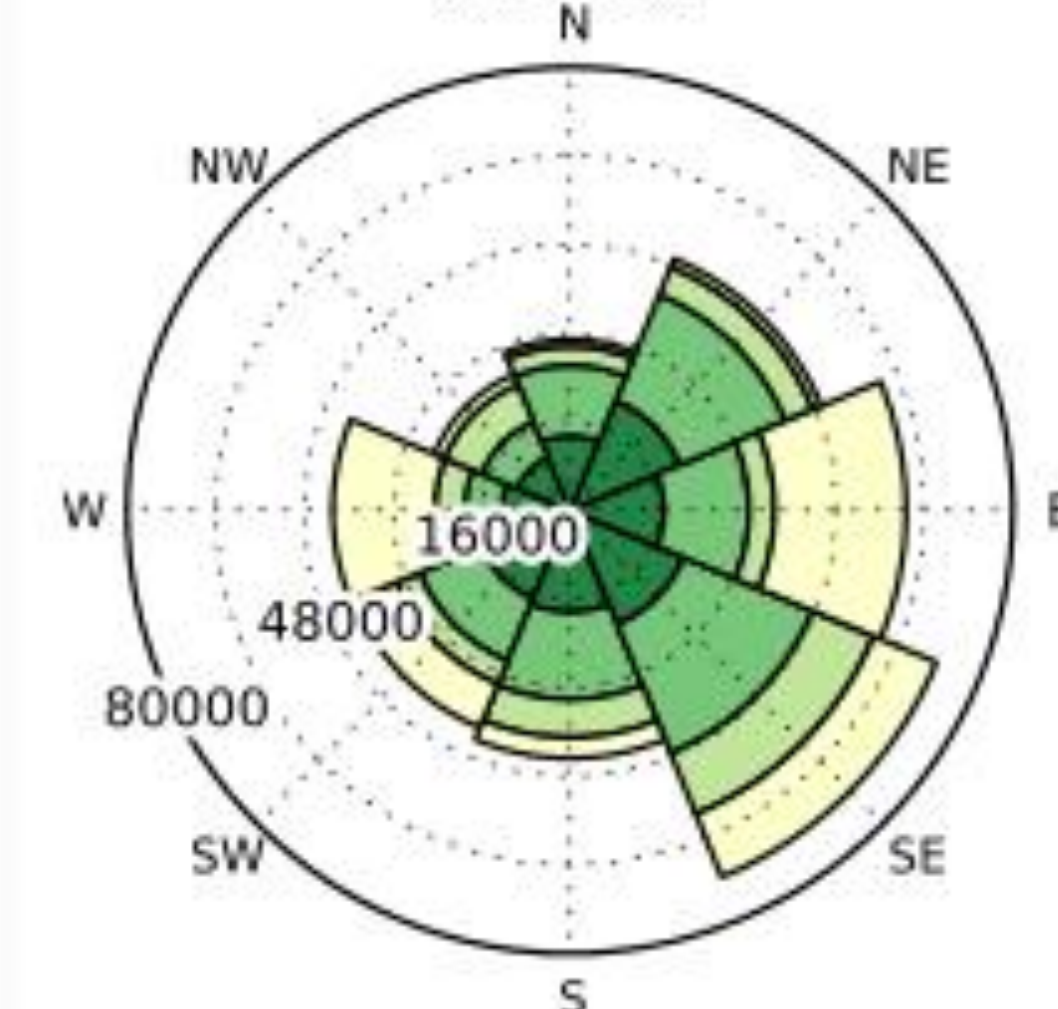
Legends

- 5 - 108 Jobs/Sq.Mile
- 109 - 418 Jobs/Sq.Mile
- 419 - 935 Jobs/Sq.Mile
- 936 - 1,658 Jobs/Sq.Mile
- 1,659 - 2,589 Jobs/Sq.Mile

- 1 - 2 Jobs
- 3 - 19 Jobs
- 20 - 95 Jobs
- 96 - 301 Jobs
- 302 - 734 Jobs

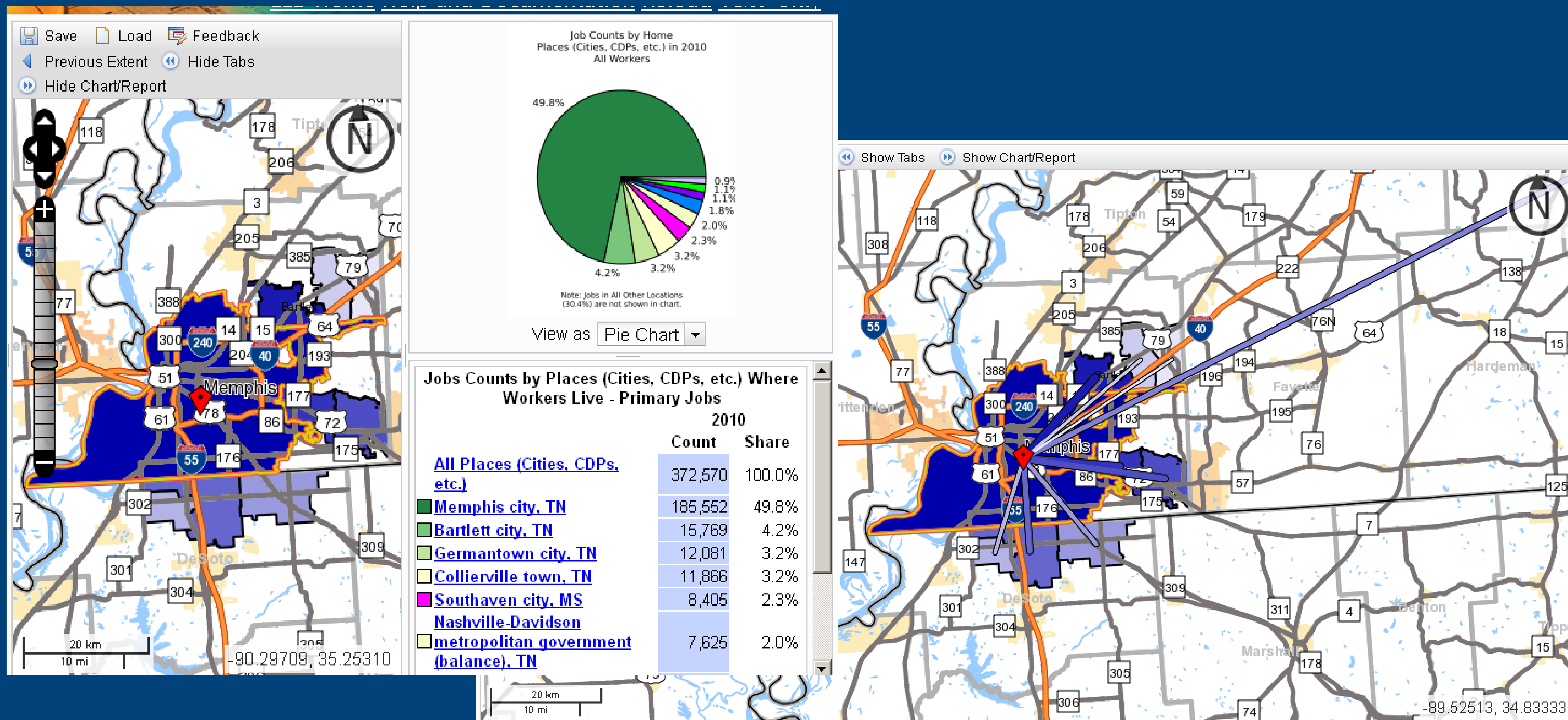
[Range Settings](#)

Save Load Feedback

[Previous Extent](#) [Hide Tabs](#)[Hide Chart/Report](#)Job Counts by Distance/Direction in 2010
All WorkersView as [Radar Chart](#)Jobs by Distance - Work Census Block to Home
Census Block

2010		
	Count	Share
Total Primary Jobs	368,931	100.0%
Less than 10 miles	132,623	35.9%
10 to 24 miles	115,538	31.3%
25 to 50 miles	49,365	13.4%
Greater than 50 miles	71,405	19.4%

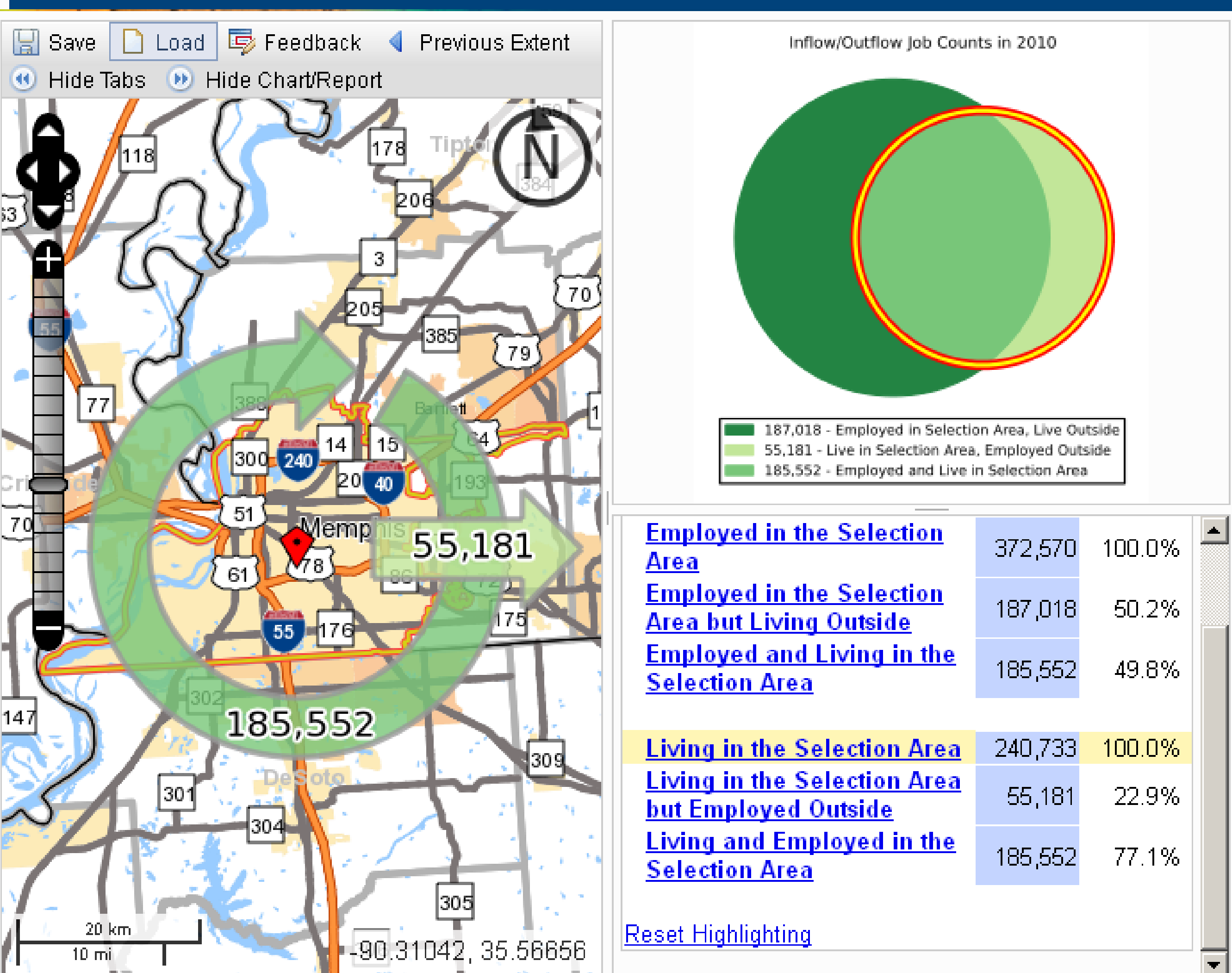
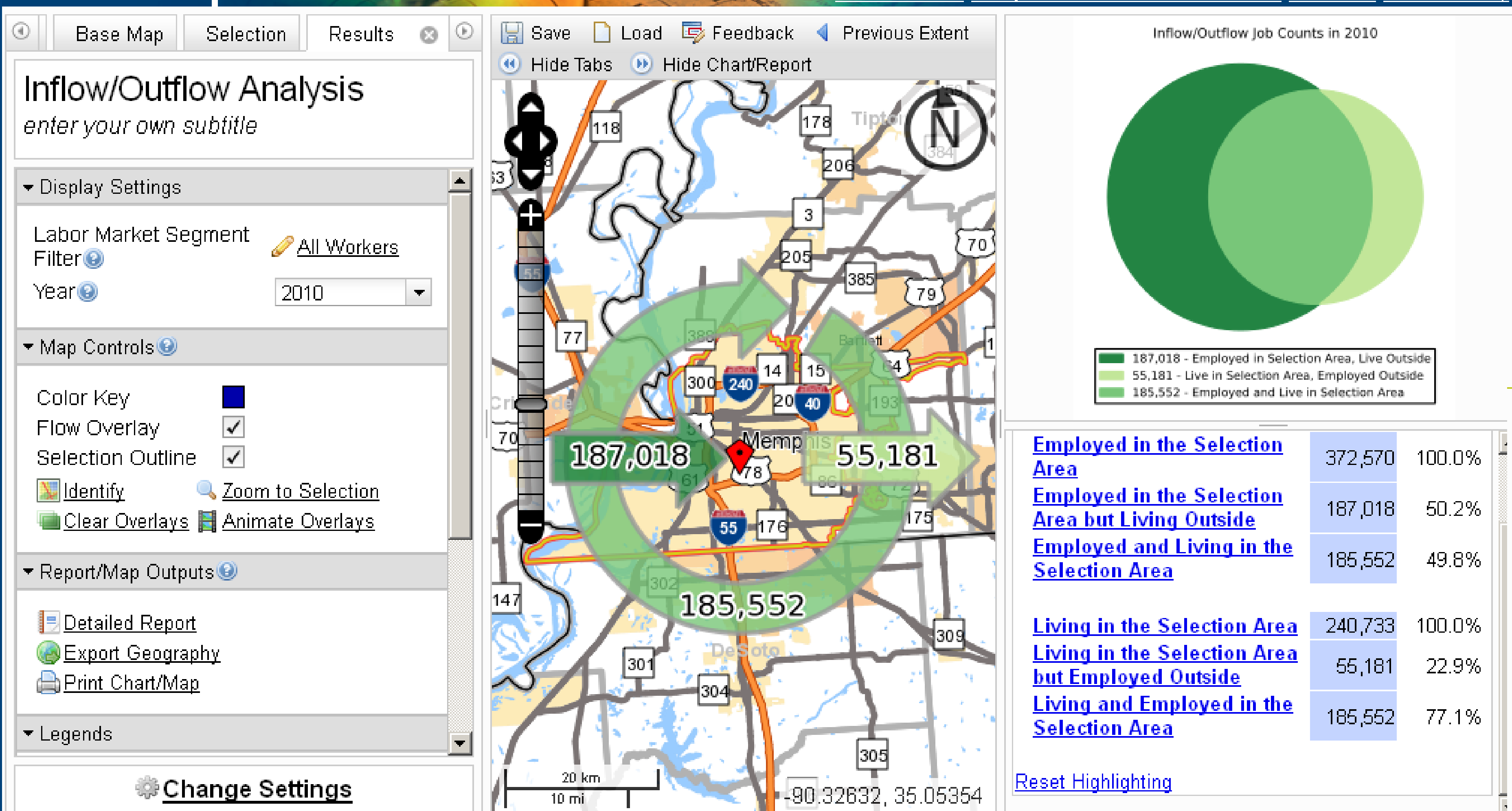
Destination



Inflow / Outflow Analysis

OnTheMap

[LED Home](#) [Help and Documentation](#) [Reload](#) [Text-Only](#)



Other Features

- Save, Load, Feedback
- Text-Only
- Reload
- Help and Documentation



ACTIVITY TIME

Distance/Direction and Destination

3. To what direction and distance do Nashville City residents commute?

- What direction do most city residents commute? What percentage of workers commuting in that direction travel between 10 and 24 miles to work?
- What percent of commutes greater than 50 miles are to the NE? Any guesses where these Nashville City residents are employed?

4. Let's change our focus from Nashville City to the Memphis City. Where do workers employed in the selected area live?

- What are the Top 5 ZIP codes that commute in to the selected area to work?
- What percent of workers commute from 38111?
- What percent of workers commute from the Rutherford County School District to work in the Memphis? Where is the Rutherford County School District located in relation to the Memphis?

Inflow/Outflow

5. What are the worker flows in, out, and within Memphis?

- How many workers flow into the selected area to work? How many workers flow out of Memphis to work?
- What percent of workers living in the Memphis are also employed in the Memphis? What percent of workers employed in the Memphis also live in the Memphis?
- Is this area a net job importer or exporter? Are workers flowing in or out more likely to be under the age of 30? What about workers earning more than \$3,333 a month?

OnTheMap for Emergency Management

OnTheMap for Emergency Management

[LED Home](#) [OnTheMap](#) [Help](#)[Events](#) [Search](#) [Map](#)

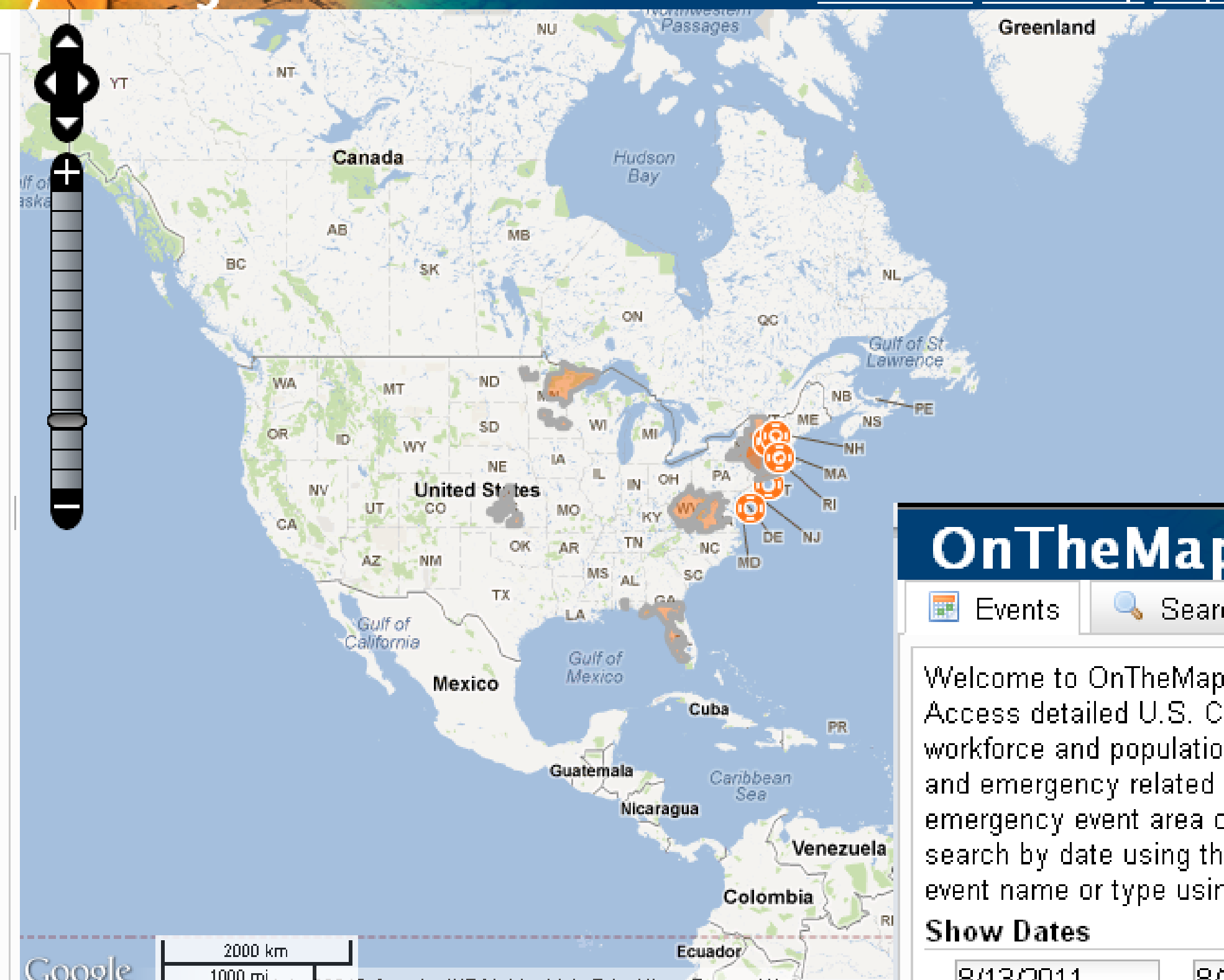
Welcome to OnTheMap for Emergency Management!
Access detailed U.S. Census Bureau reports on the workforce and population for current natural hazard and emergency related events. To start, click on an emergency event area of interest on the map or search by date using the date ranges below or by event name or type using the Search tool.

Show Dates

 -

Show Event Types

- ☒ Hurricanes and Tropical Storms
- ☒ Wildfires
- ☒ Flood Outlook Areas
- ☒ Disaster Declaration Areas
- ☒ Snow and Freezing Rain Probability Forecasts

[Refresh Event List](#)☒ 07/30/2012☐ 07/29/2012☐ 07/28/2012☐ 07/27/2012☐ 07/26/2012☐ 07/25/2012☐ 07/24/2012

OnTheMap for Emergency Management

[LED Home](#) [OnTheMap](#) [Help](#)[Events](#) [Search](#) [Map](#)

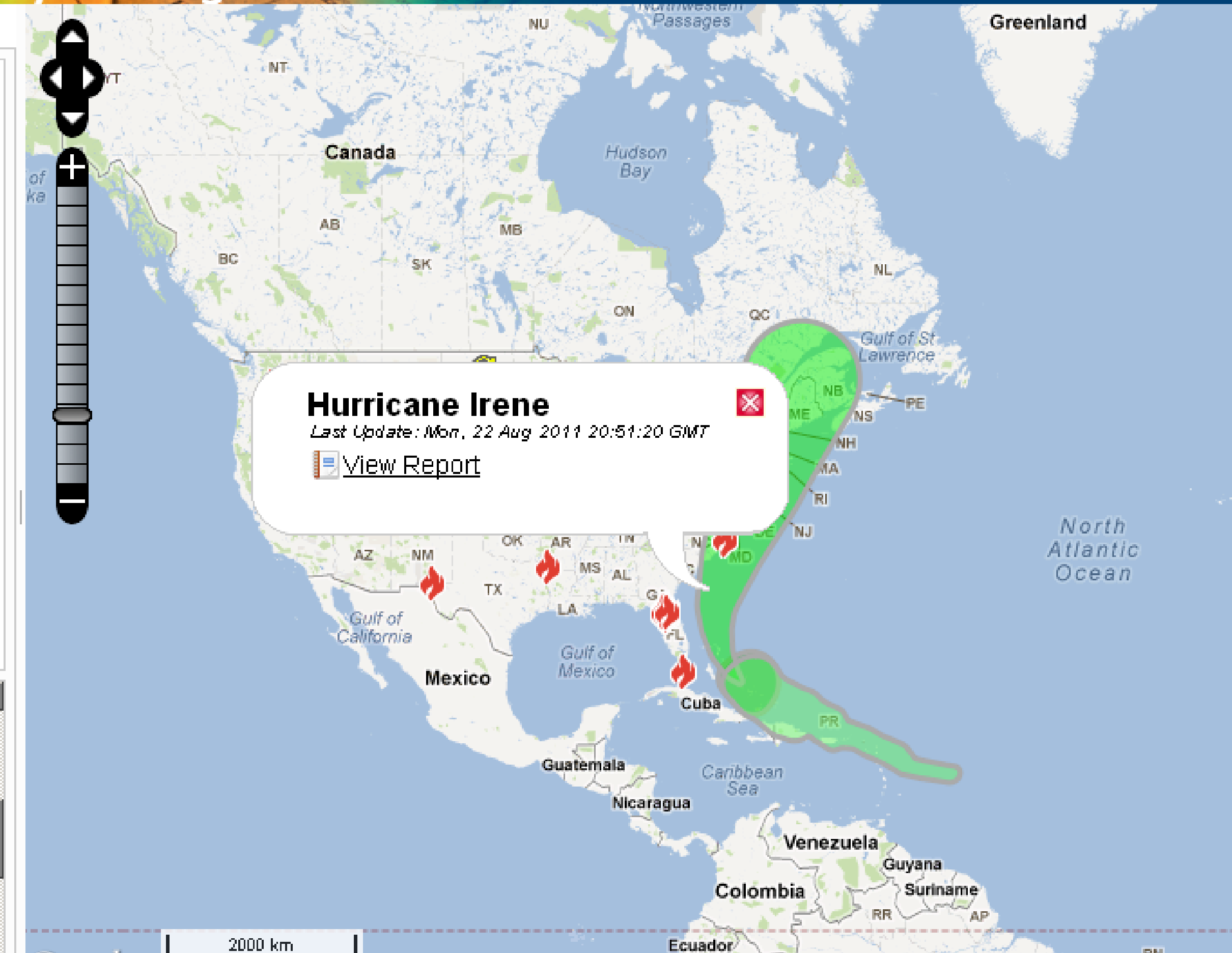
Welcome to OnTheMap for Emergency Management!
Access detailed U.S. Census Bureau reports on the workforce and population for current natural hazard and emergency related events. To start, click on an emergency event area of interest on the map or search by date using the date ranges below or by event name or type using the Search tool.

Show Dates

 -

Show Event Types

- ☒ Hurricanes and Tropical Storms
- ☒ Wildfires
- ☒ Flood Outlook Areas
- ☒ Disaster Declaration Areas
- ☒ Snow and Freezing Rain Probability Forecasts

[Refresh Event List](#)☒ 08/24/2011☐ 08/23/2011☐ 08/22/2011☐ 08/21/2011☐ 08/20/2011☐ 08/19/2011

Search and Report Tab

OnTheMap for Emergency Management

nts

Search

Map

Report

To search for a specific named event or type of hazard (such as 'hurricane Irene' or 'fires'), simply enter the search terms in the text box and press the Search button. Note that Floods, Snow, and Freezing Rain are not named events and can be more easily identified by date.

Search Term

Dr-4060

Search

Search for Event Types

☒ Hurricanes and Tropical Storms

☒ Wildfires

☒ Disaster Declaration Areas

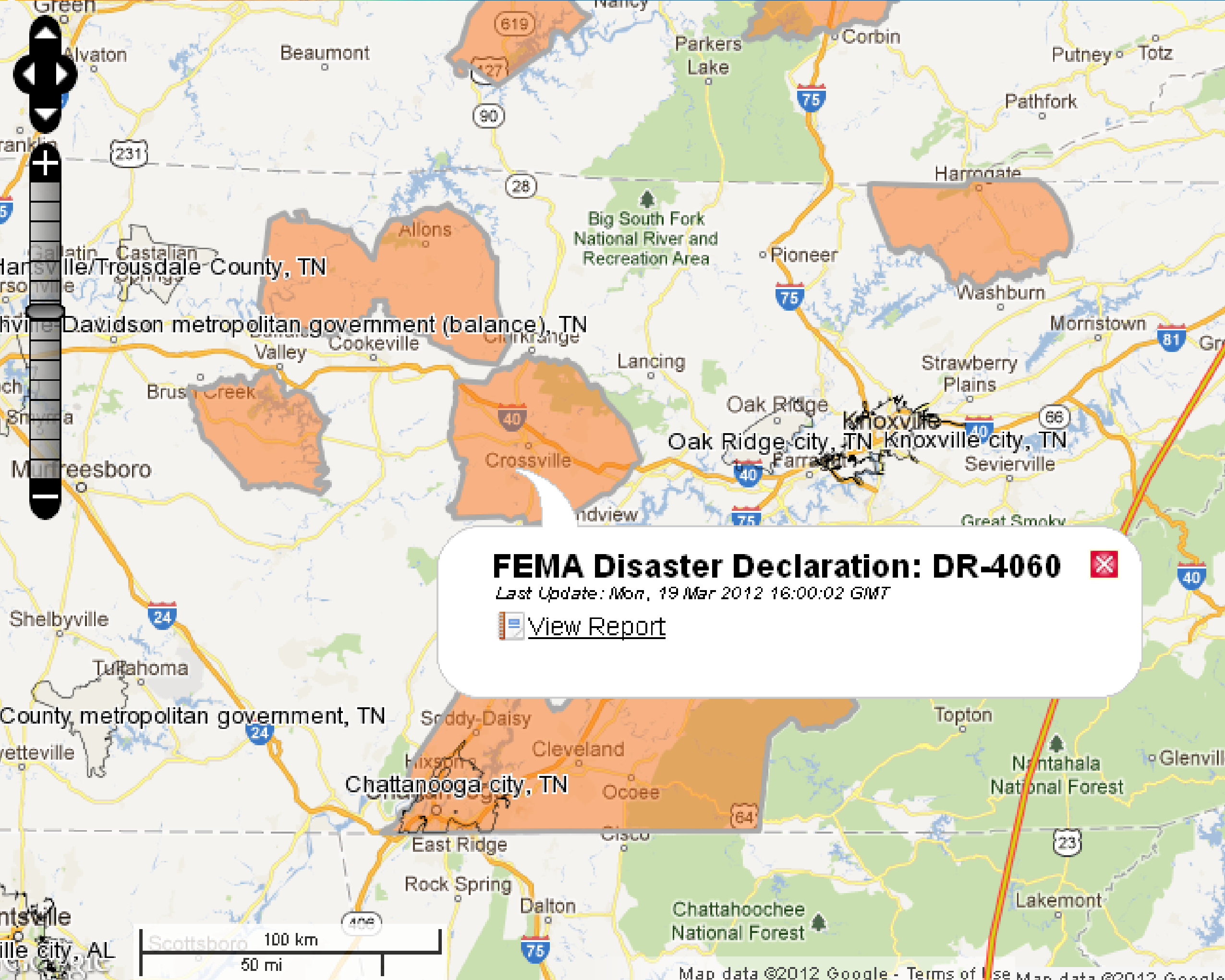
Disaster Declaration Areas

FEMA Disaster Declaration: DR-4060

LED Home

OnTheMap

Help



nts

Search

Map

Report

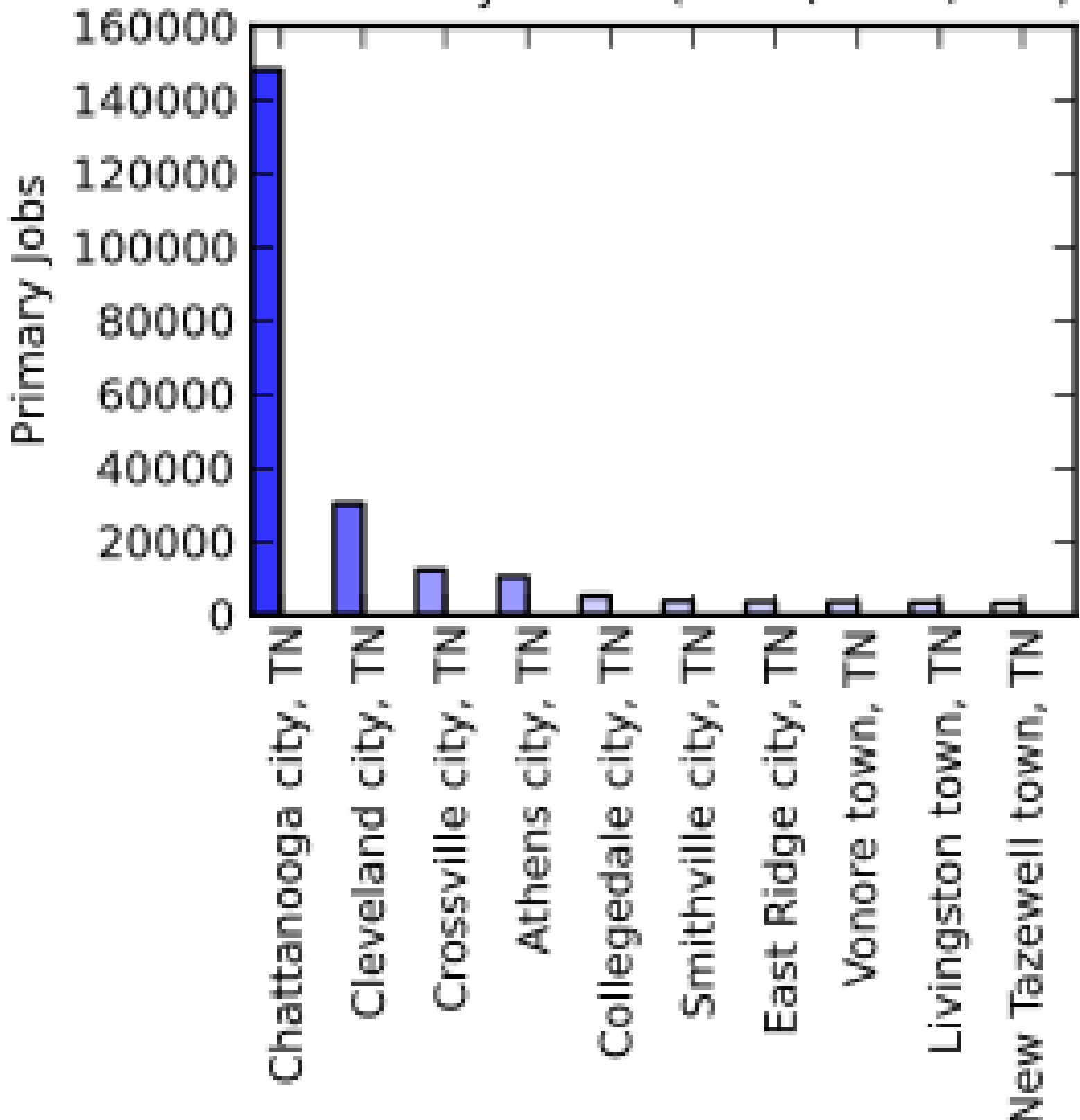
Analysis Type

Worker Area Profile

Geography Type

Places (Cities, CDPs, etc.)

Workers by Places (Cities, CDPs, etc.)



Place	Primary Jobs (Approx.)
Chattanooga city, TN	150,000
Cleveland city, TN	30,000
Crossville city, TN	15,000
Athens city, TN	10,000
Collegedale city, TN	5,000
Smithville city, TN	5,000
East Ridge city, TN	5,000
Vonore town, TN	5,000
Livingston town, TN	5,000
New Tazewell town, TN	5,000

2010

	Count	Share
Total	267,600	100.0%

PDF Export

XLS Export

KML Export

Questions?

- Contact Information:
 - Earlene Dowell
 - Lead Technical Marketing and Training Consultant
 - Longitudinal Employer-Household Dynamics Program
 - CES.Local.Employment.Dynamics@census.gov
- Join the List Serve
- lehd-onthemap@lists.census.gov
- lehd-general@lists.census.gov