

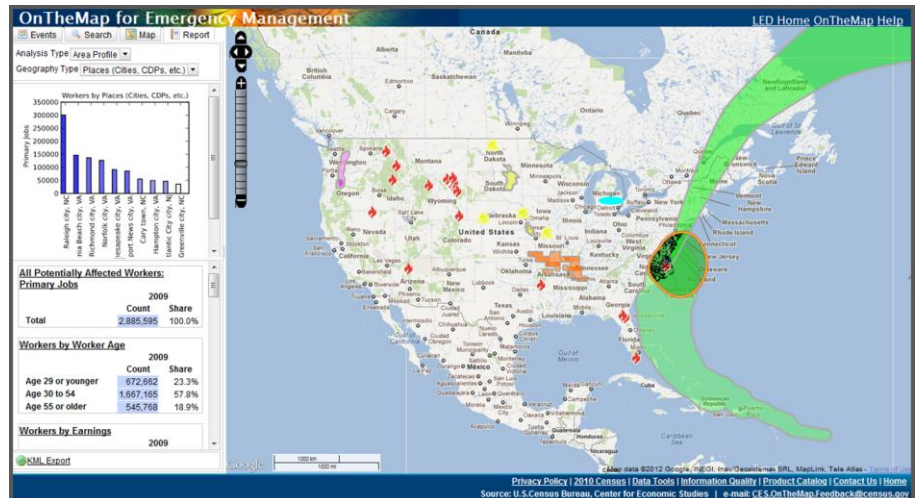
OnTheMap for Emergency Management: Overview

Local Employment Dynamics

OnTheMap for Emergency Management is a public data tool that provides an intuitive web-based interface for accessing U.S. population and workforce statistics, in real time, for areas being affected by natural disasters. Users can easily retrieve reports containing detailed workforce, population, and housing characteristics for hurricanes, floods, wildfires, winter storms, and federal disaster declaration areas.

To provide users this information for rapidly changing hazard event areas, OnTheMap for Emergency Management automatically incorporates real time data updates from the National Weather Service's (NWS) National Hurricane Center, Department of Interior (DOI), Department of Agriculture (DOA), and the Federal Emergency Management Agency (FEMA).

Version 3 offers a number of new features to improve access to and utility of Census workforce and demographic data for emergency preparedness, response, and recovery activities including incorporating Federal Disaster Areas, Snowfall Forecasts, and 2010 Census demographic and housing characteristics.



Screenshot of OnTheMap for Emergency Management Version 3.

Version 3 Highlights:

- **New Emergency Event Data-** Addition of FEMA Disaster Declaration Areas & NWS Snowfall Probability Forecasts
- **More Complete Hurricane Archives-** Capture & Archiving of all Daily NHC Storm Updates
- **Expanded Report Content-** Addition of Decennial 2010 Population & Housing Characteristics; 2010 Jobs & Worker Sex Data
- **New Analyses & Visualizations-** New Reports with Charting & Thematic Map Overlays Showing Population & Worker Distributions
- **New Interoperability-** New Tool for Exporting Event Areas to use in OnTheMap or Other GIS Applications
- **Updated Interface & Help Documentation-** Improved User Interface Speed and Navigability; Improved Event Searching; Newly Updated Help Documentation

OnTheMap for Emergency Management is supported by the state Labor Market Information agencies under the Local Employment Dynamics (LED) partnership with the Census Bureau. Data for MA, PR, and VI are not available at this time.

OnTheMap for Emergency Management can be accessed directly at <http://onthemap.ces.census.gov/em.html>.

For questions or comments contact: CES.OnTheMap.Feedback@census.gov