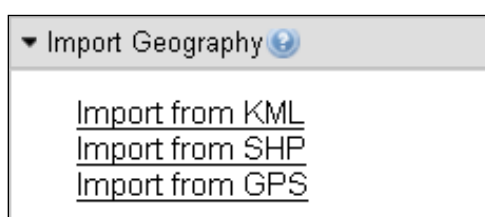


OnTheMap

How to Import External Geography Data for Analysis

Local Employment Dynamics

OnTheMap provides an assortment of easy-to-use tools for importing GPS coordinates, shapefiles, KML/KMZ files, and addresses for use in the creation of selection areas. Once the data are imported, they can then be used to select pre-defined Census Bureau-supported geographies and/or buffered using one of the three buffering options, or used for an analysis without any alteration if the imported feature(s) is a polygon area.



The Import Geography tools (shown above) can be found in the Start, Selection, and Advanced tabs. To import external data for use as a selection area, use the tools in the Start or Selection tab. To import external data for use as an advanced selection area, use the tools in the Advanced tab. Addresses are imported using the Search tool in the Start tab, and therefore cannot be used to create an advanced selection.

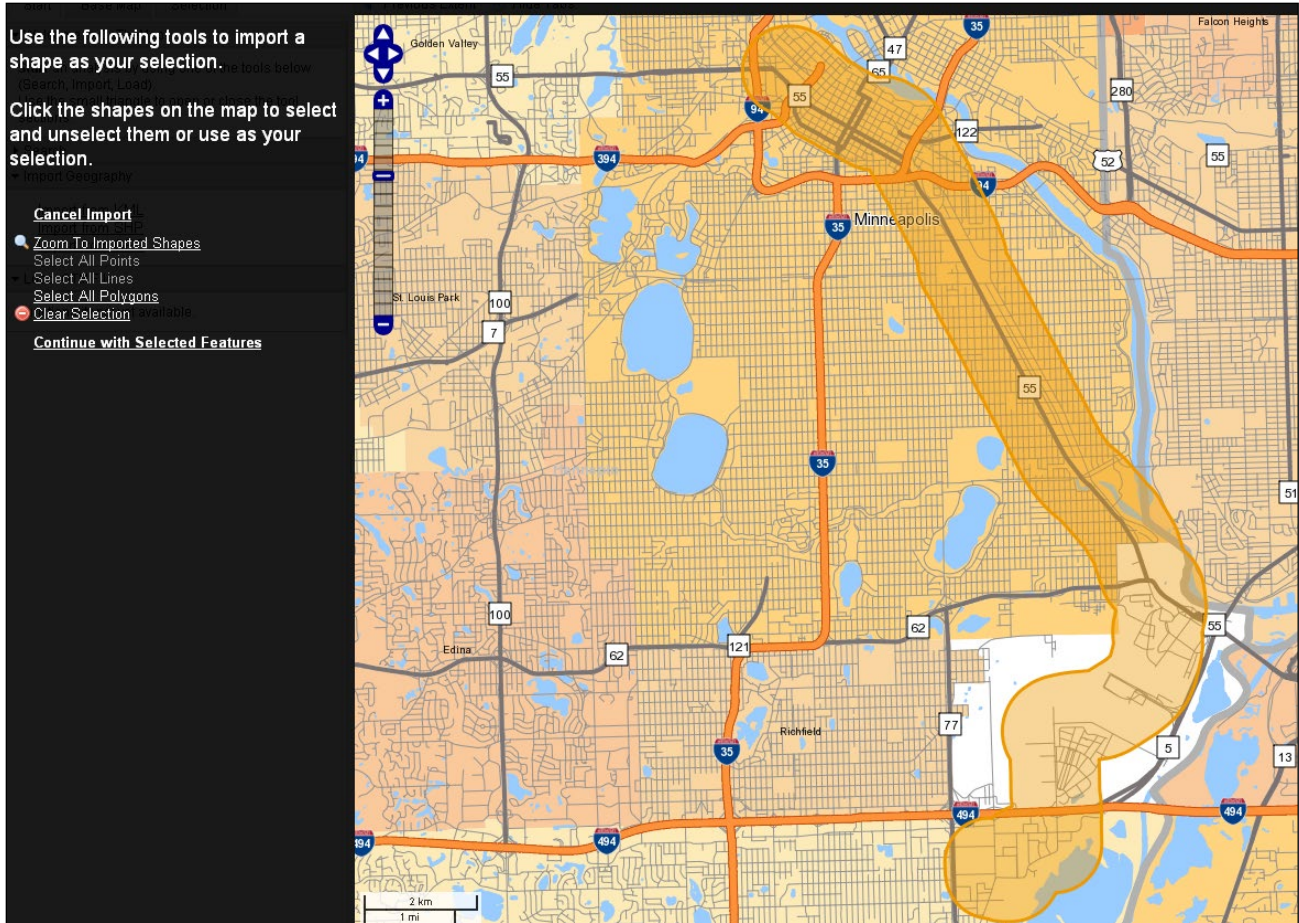
KML/KMZ : Click **Import from KML**, select **Browse...** and navigate to the desired KML or KMZ file, then click **Import**.

Select Shapes from a KML/KMZ

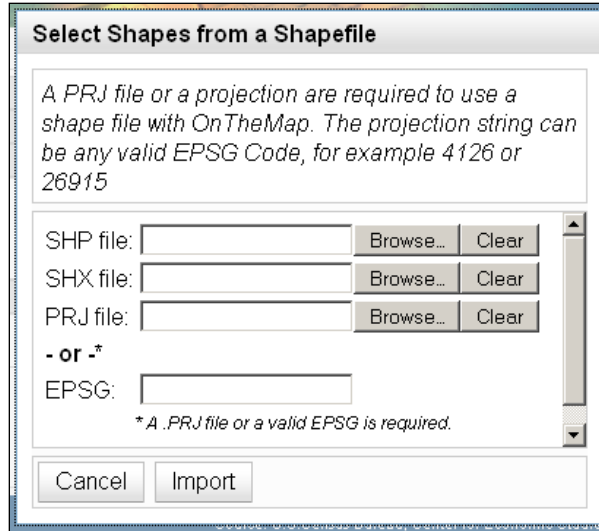
Upload data from a KML/KMZ file.

KML file:

After the imported file is processed, a black frame with import options appears around the map viewer (shown below). Click **Zoom to Imported Shapes** to center the map on the available features. Users can select one or more KML features by clicking on them in the map, or choose all features by clicking **Select All Points/Lines/Polygons** (Note: features from only one feature type – point, line, or polygon – can be imported at any one time). Imported features turn blue when they have been selected. Click **Continue with Selected Features** to return to the Selection tab, then click **Confirm Selection** to continue without altering the imported features (polygon areas only). Alternatively, select a layer type from the *Add Layer Selection* dropdown and/or one of the buffer options before clicking **Confirm Selection**. For more information on using OnTheMap's selection tools, click [here](#).

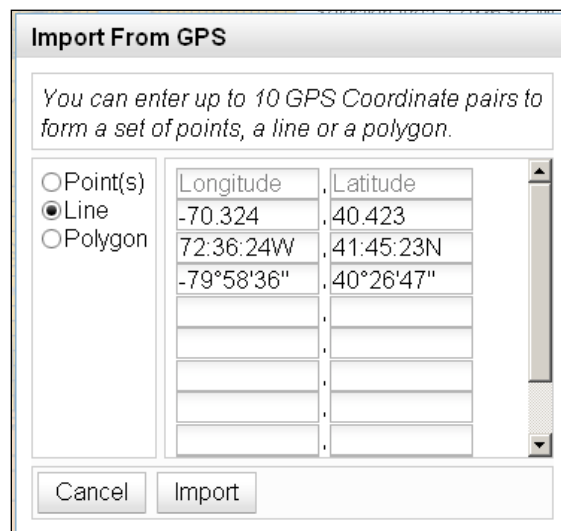


Shapefile: Click **Import from SHP**, click **Browse...** and locate the SHP, SHX, and PRJ files of the desired shapefile, then click **Import**. An EPSG Code can be used in place of a PRJ file, if necessary. OnTheMap geography uses *USA Contiguous Albers Equal Area Conic* projection (EPSG: 102003).



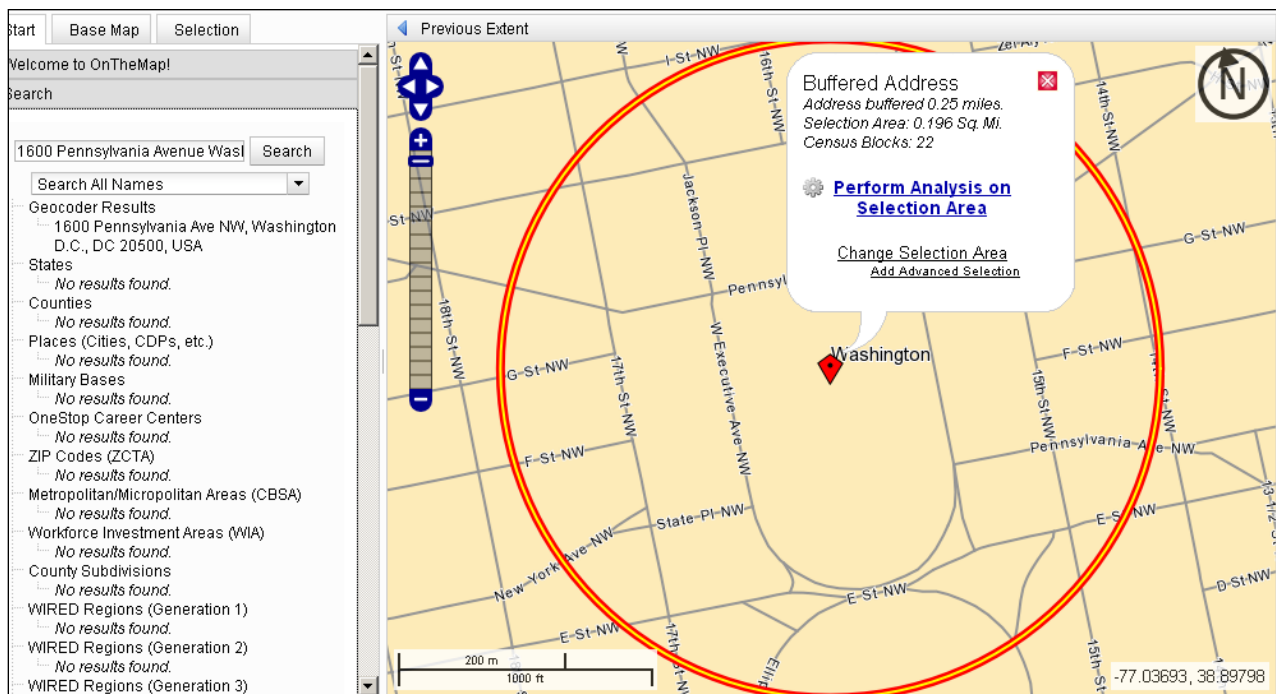
After the imported files are processed, a black frame with import options appears around the map viewer. Click **Zoom to Imported Shapes** to center the map on the available features. Users can select one or more shapefile features by clicking on them in the map, or choose all features by clicking **Select All Points/Lines/Polygons**. Imported features turn blue when they have been selected. Click **Continue with Selected Shapes** to return to the Selection tab, then click **Confirm Selection** to continue without altering the imported features (polygon areas only). Alternatively, select a layer type from the *Add Layer Selection* dropdown and/or one of the buffer options before clicking **Confirm Selection**. For more information on using OnTheMap's selection tools, click [here](#).

Latitude/Longitude Coordinates: To import GPS coordinates, enter up to 10 Longitude and Latitude coordinates in the marked text boxes, select the desired output (Point(s), Line, or Polygon), and click **Import**.



Coordinates can be entered in decimal degrees or degrees/minutes/seconds format. The image shown above provides three examples of formats the GPS Import tool will accept. Lines and polygons will be constructed by connecting the coordinates in the order they are entered. A quarter mile buffer will automatically be added around point locations, unless the *Add Layer Selection* dropdown is active with a geography type. After clicking **Import**, users will be directed to the Selection tab. Click **Confirm Selection** to continue without altering the imported coordinate features (polygon and buffered point areas only). Alternatively, select a layer type from the *Add Layer Selection* dropdown and/or one of the buffer options before clicking **Confirm Selection**. For more information on using OnTheMap's selection tools, click [here](#).

Address: To import an address, enter a valid U.S. address or intersection into the Search box of the Start tab. OnTheMap will return a set of Geocoder Results that match the entered address. An address needs to include a city and state or ZIP code to be successfully located in the OnTheMap Geocoder. Click on the desired address result to drop a point on that location in the map viewer. A quarter mile buffer is automatically added around the location (the example shown below demonstrates the buffer around 1600 Pennsylvania Ave, Washington, DC).



Click **Perform Analysis on Selection Area** in the Selection Area popup to continue or click **Change Selection Area** to change the buffer type/amount or use the *Add Layer Selection* dropdown. For more information on using OnTheMap's selection tools, click [here](#).