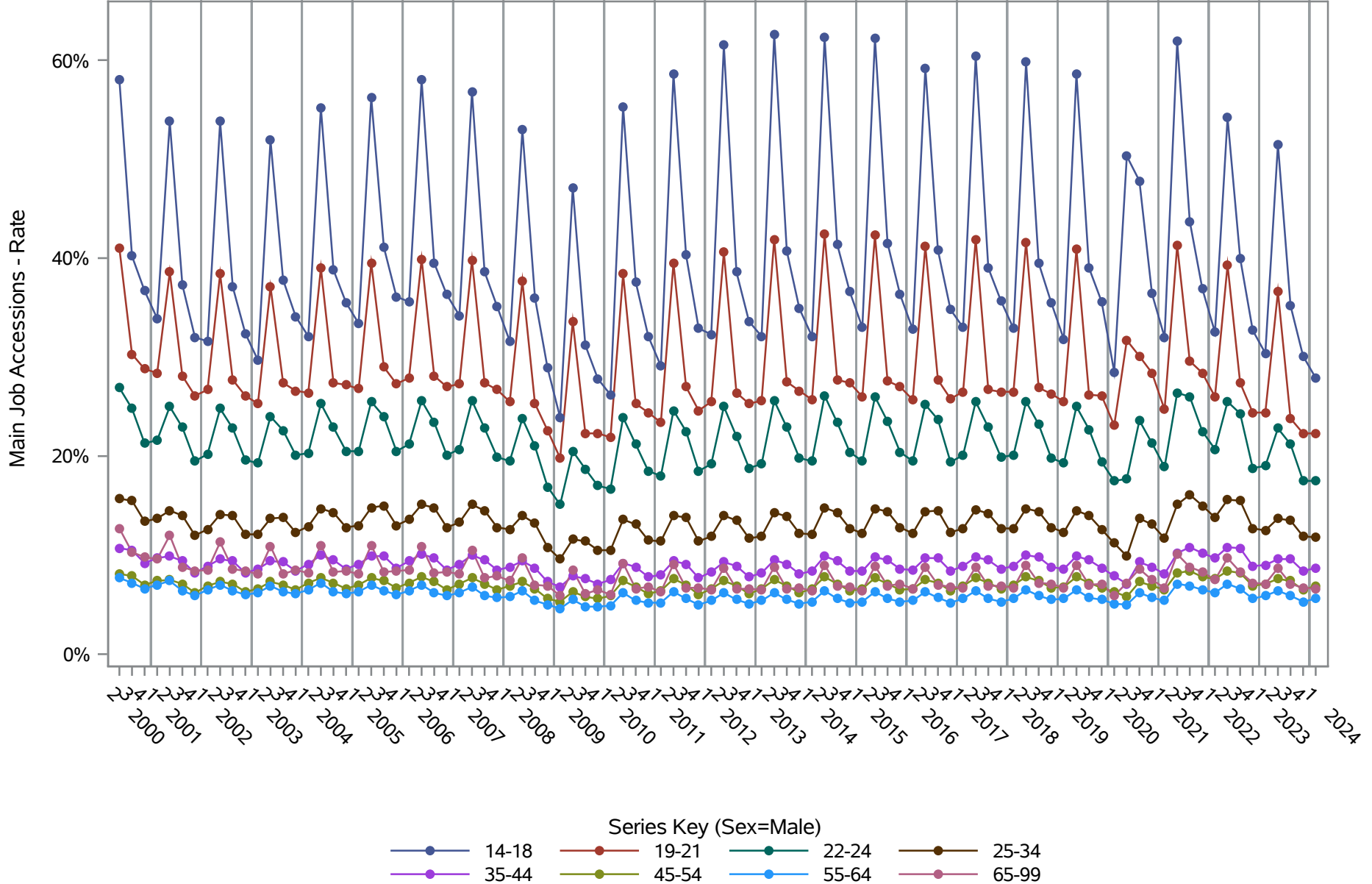
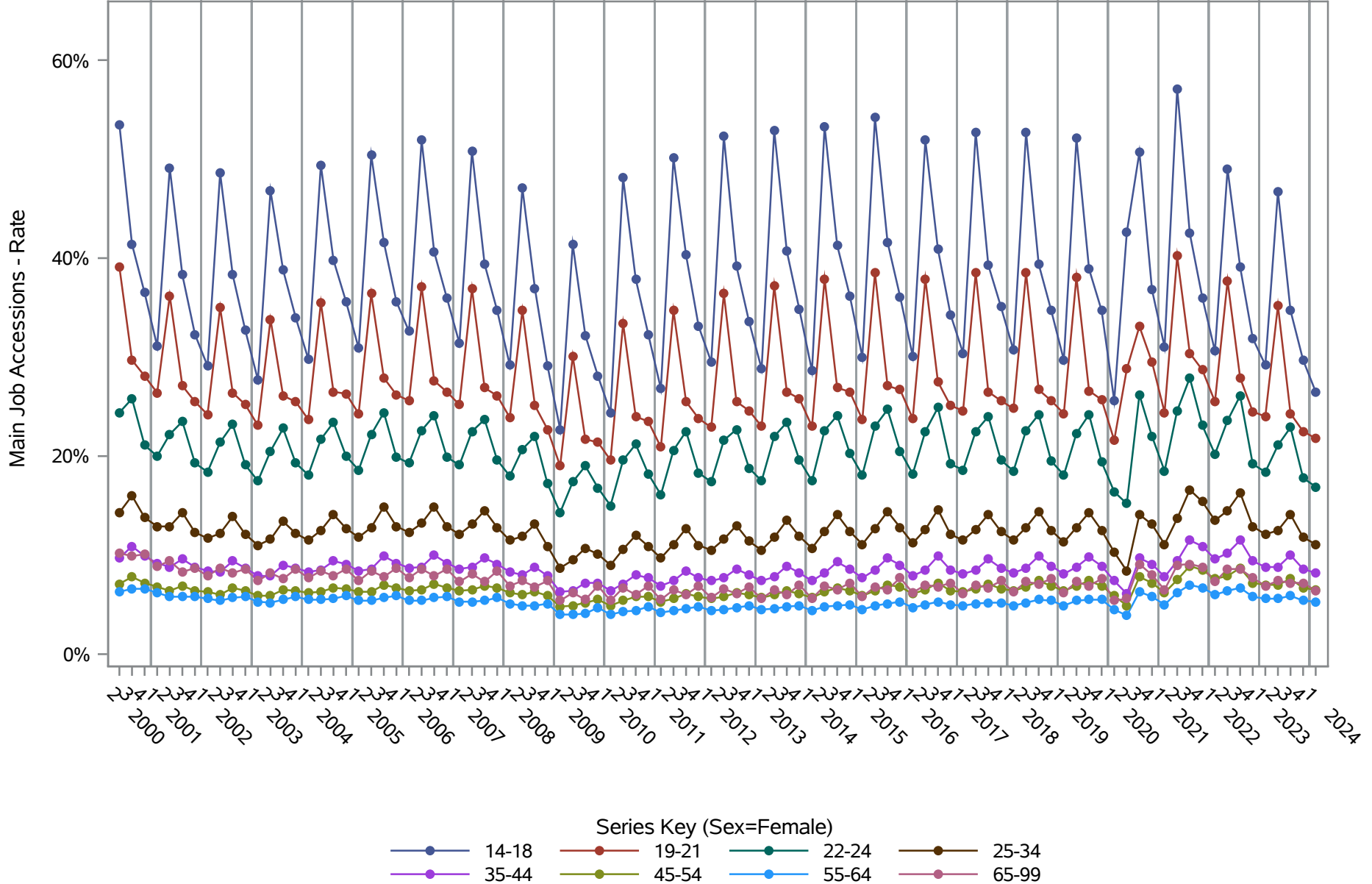


**National J2J Rates**  
**Main Job Accessions (Not Seasonally Adjusted)**  
*by Sex and Age (1 of 2) Sex=Male*



Source: United States Census Bureau, Job-to-Job Flow Statistics, Release R2025Q1 (Beta)

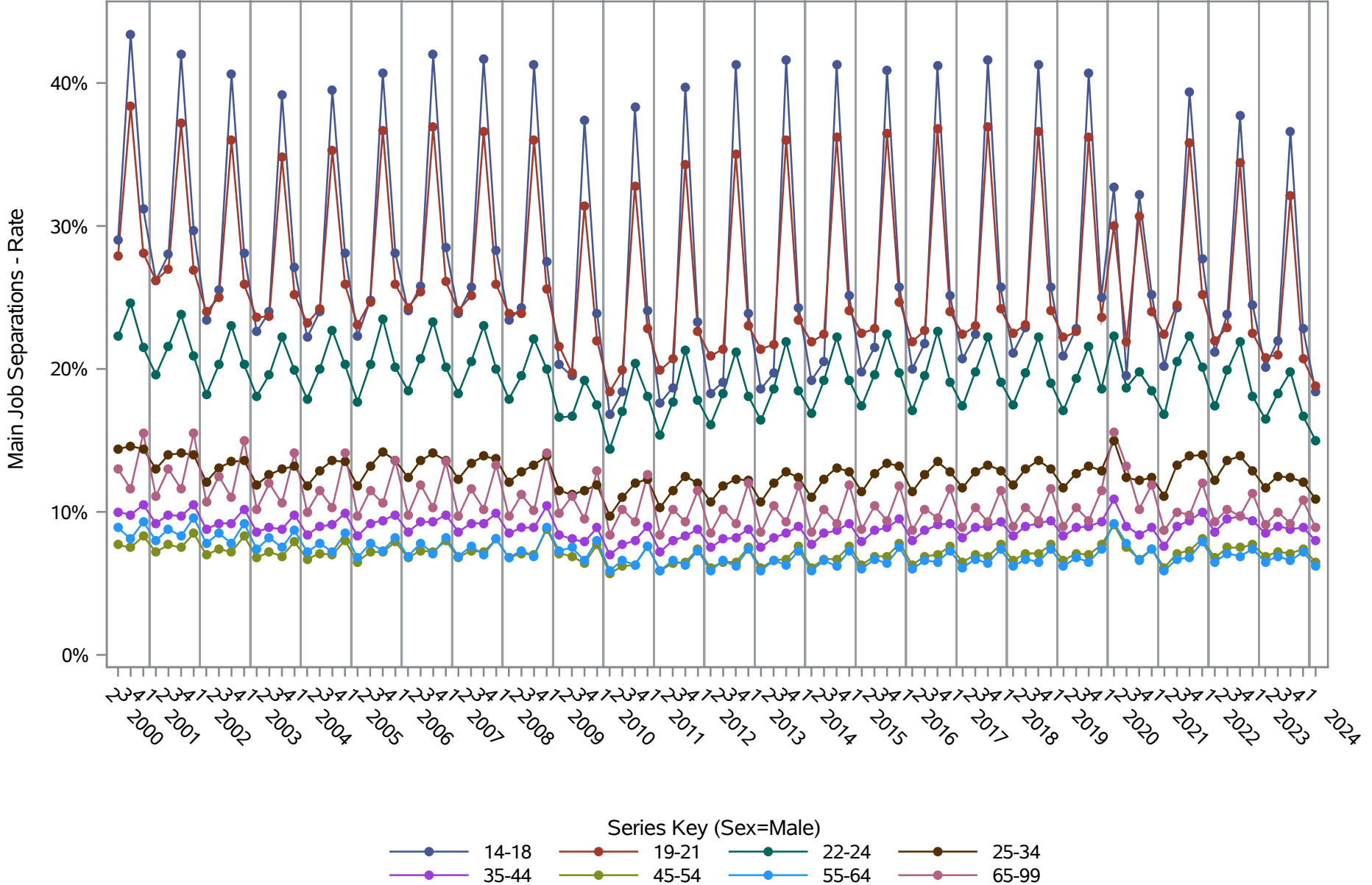
**National J2J Rates**  
**Main Job Accessions (Not Seasonally Adjusted)**  
*by Sex and Age (2 of 2) Sex=Female*



**Source: United States Census Bureau, Job-to-Job Flow Statistics, Release R2025Q1 (Beta)**

# National J2J Rates

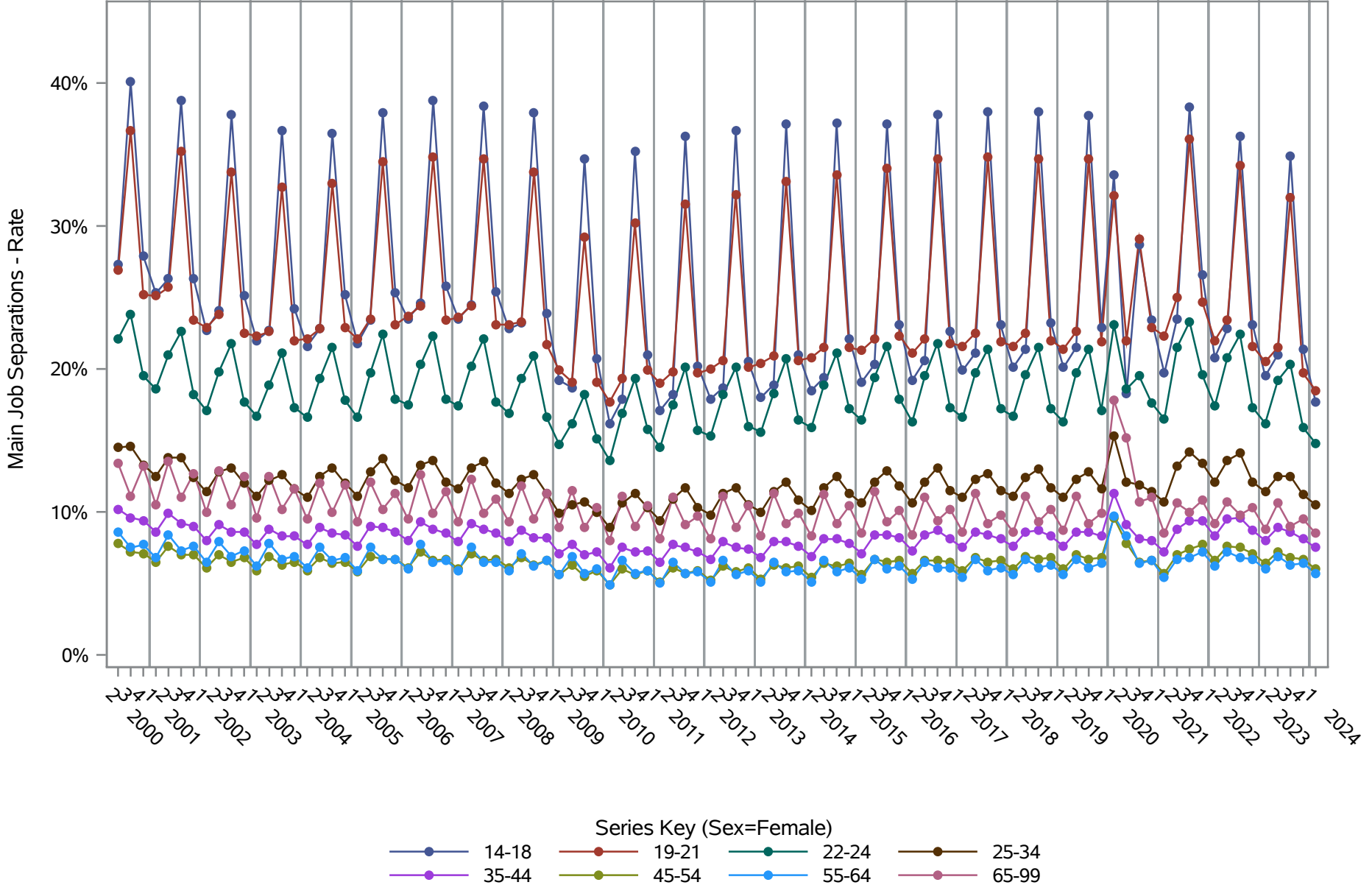
## Main Job Separations (Not Seasonally Adjusted) by Sex and Age (1 of 2) Sex=Male



Source: United States Census Bureau, Job-to-Job Flow Statistics, Release R2025Q1 (Beta)

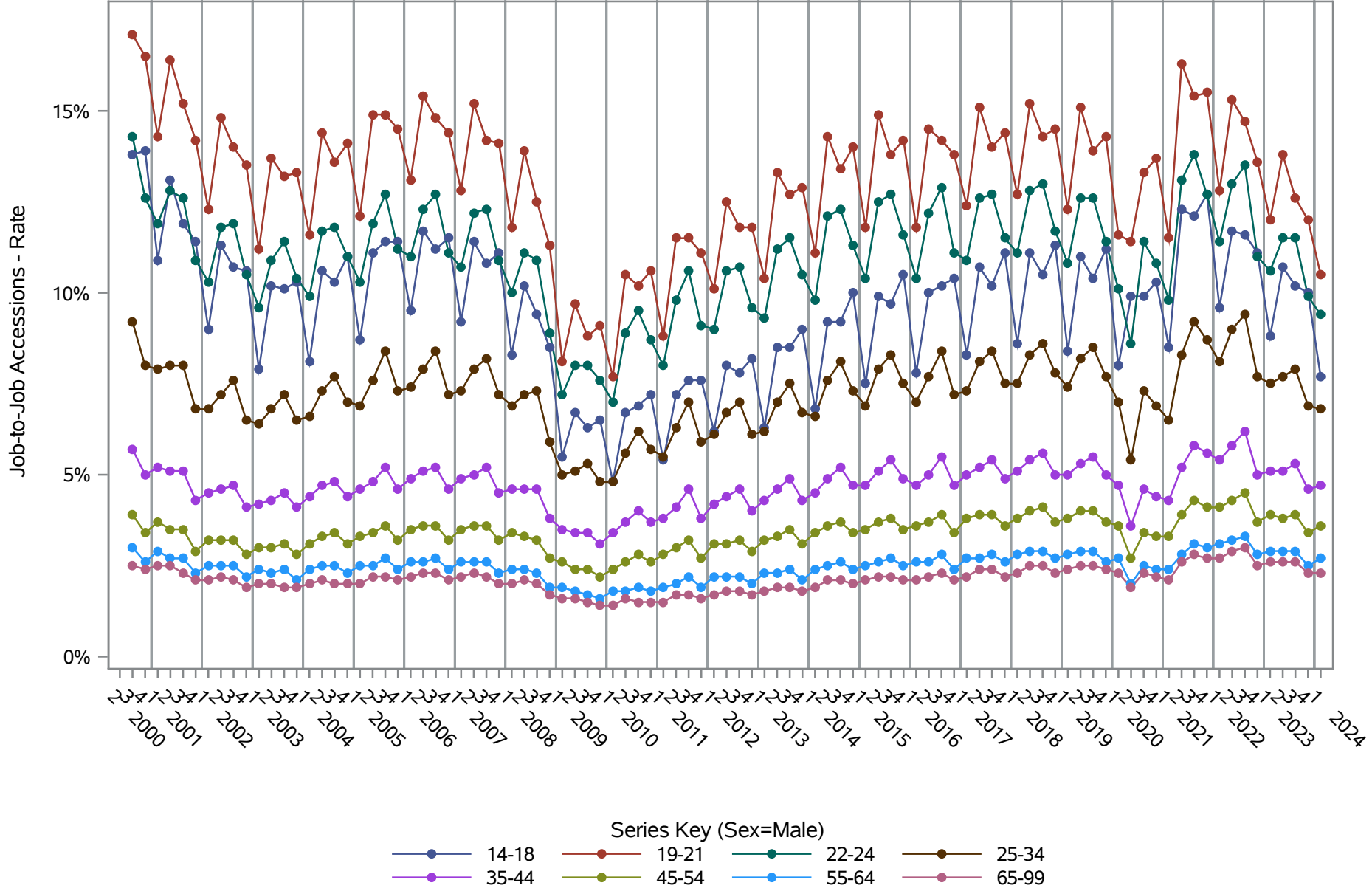
# National J2J Rates

## Main Job Separations (Not Seasonally Adjusted) by Sex and Age (2 of 2) Sex=Female



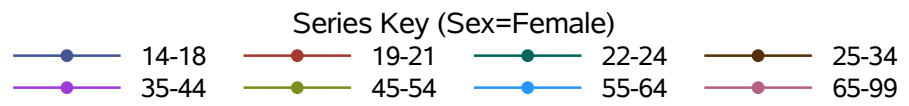
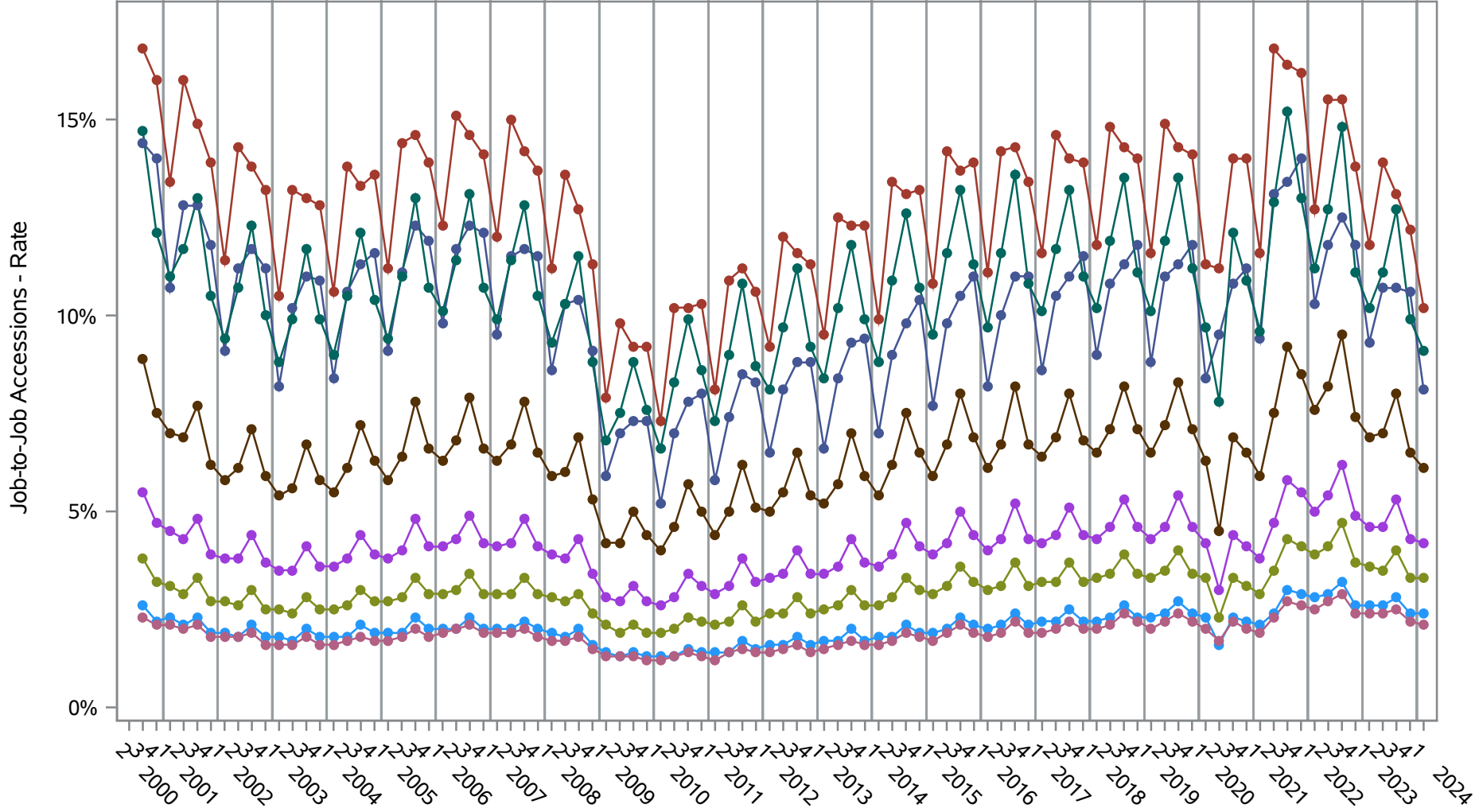
Source: United States Census Bureau, Job-to-Job Flow Statistics, Release R2025Q1 (Beta)

**National J2J Rates**  
**Job-to-Job Accessions (Not Seasonally Adjusted)**  
*by Sex and Age (1 of 2) Sex=Male*



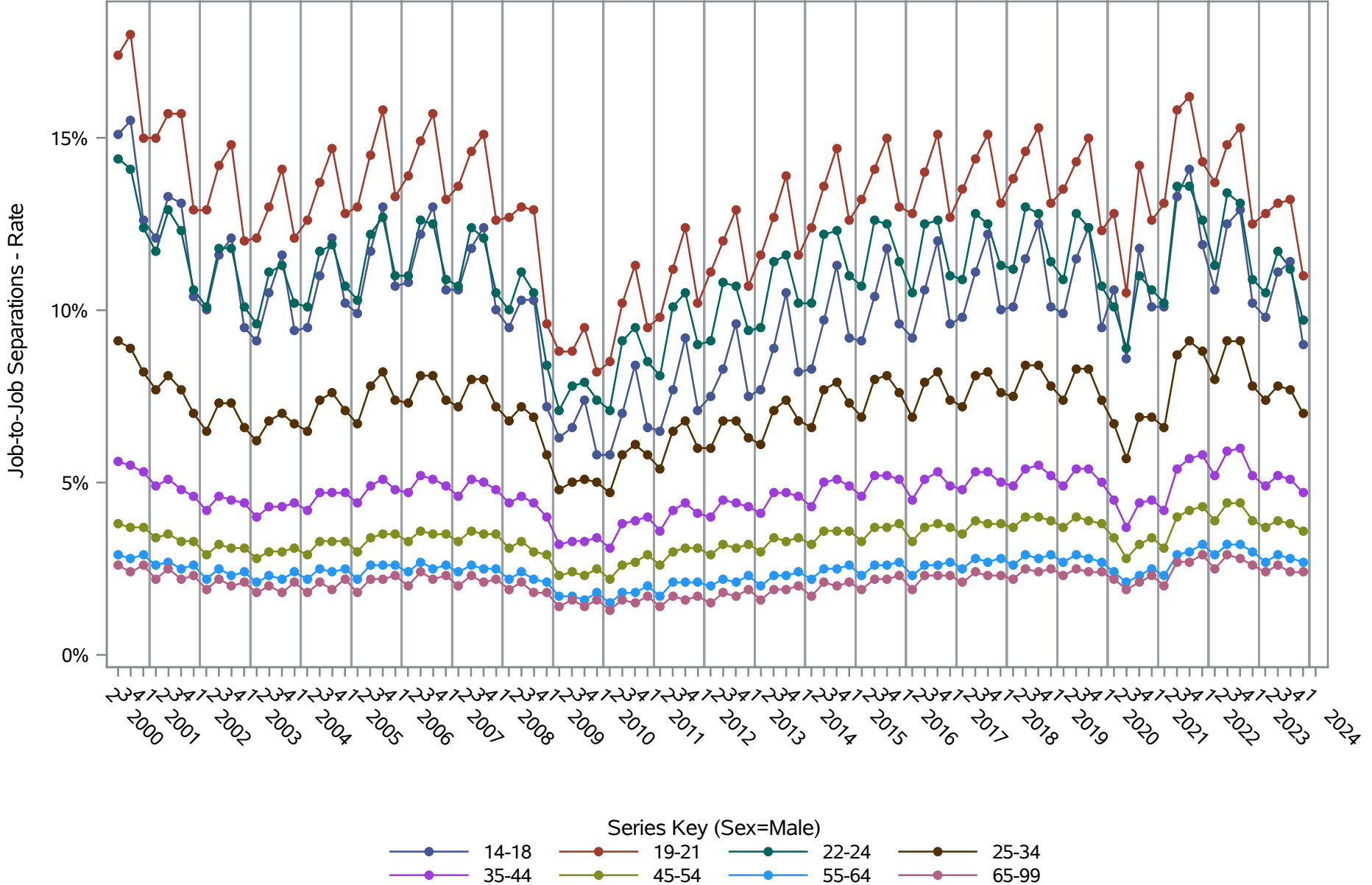
**Source: United States Census Bureau, Job-to-Job Flow Statistics, Release R2025Q1 (Beta)**

**National J2J Rates**  
**Job-to-Job Accessions (Not Seasonally Adjusted)**  
*by Sex and Age (2 of 2) Sex=Female*



**Source: United States Census Bureau, Job-to-Job Flow Statistics, Release R2025Q1 (Beta)**

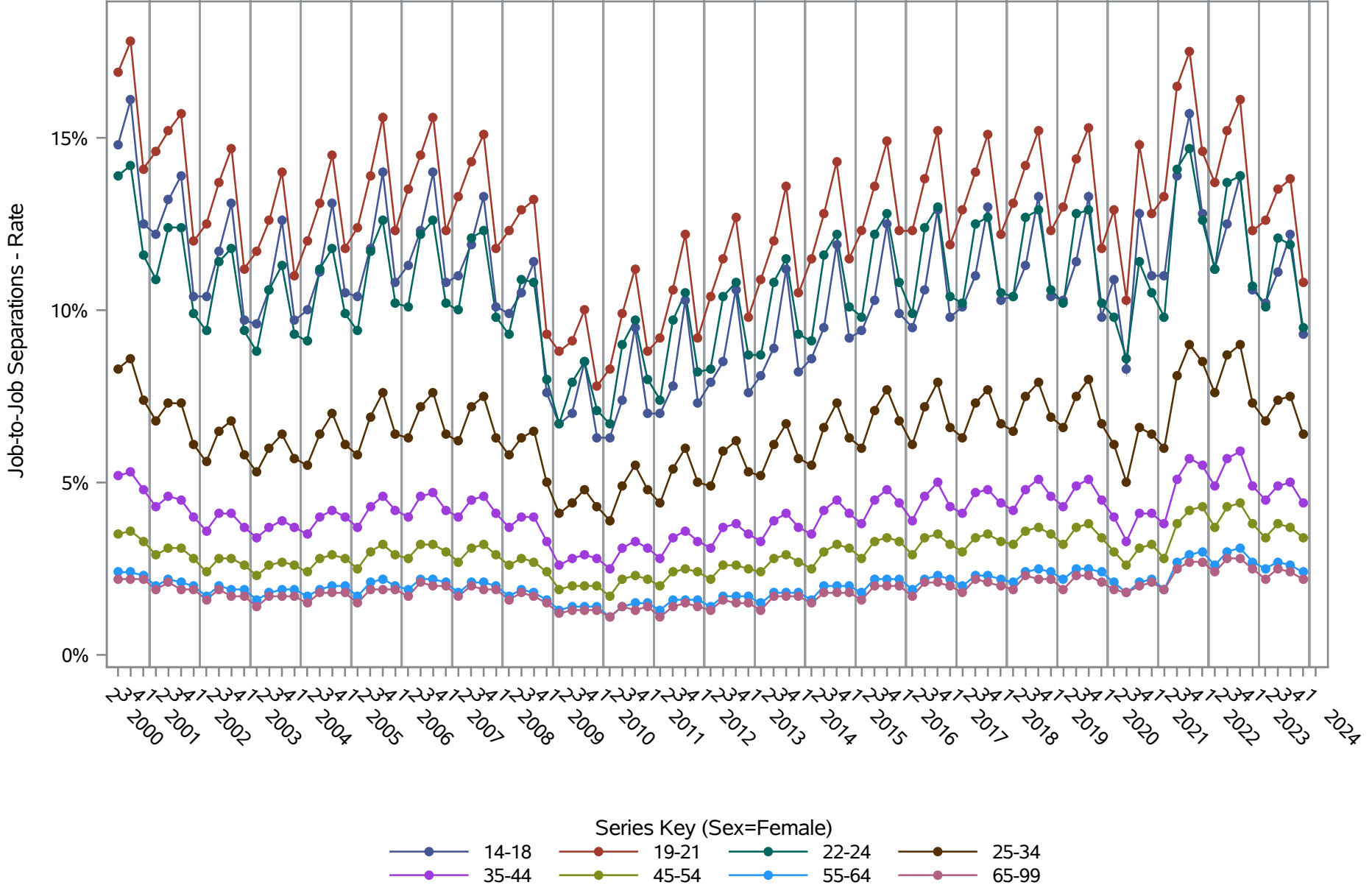
**National J2J Rates**  
**Job-to-Job Separations (Not Seasonally Adjusted)**  
*by Sex and Age (1 of 2) Sex=Male*



**Source: United States Census Bureau, Job-to-Job Flow Statistics, Release R2025Q1 (Beta)**



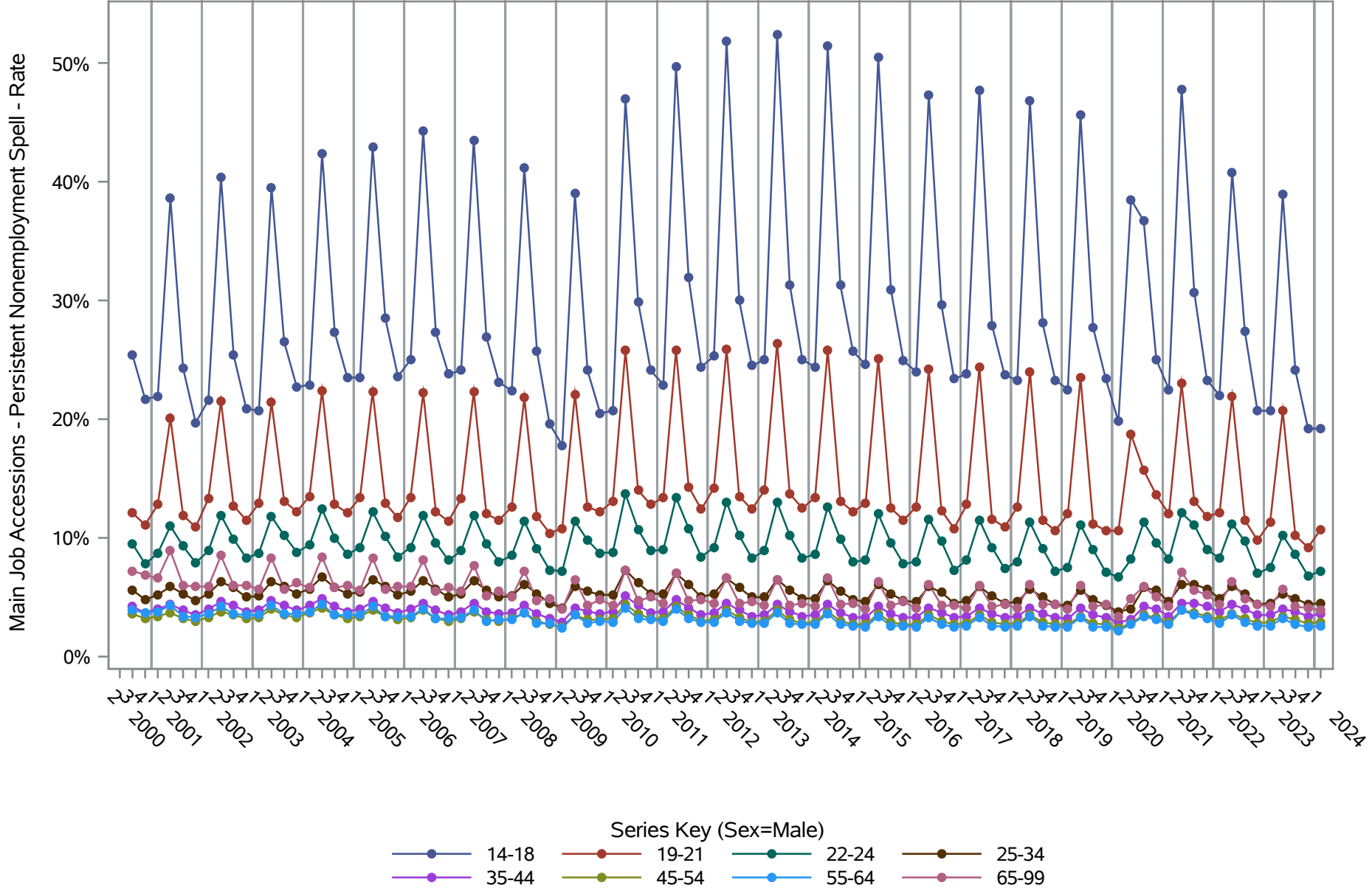
**National J2J Rates**  
**Job-to-Job Separations (Not Seasonally Adjusted)**  
*by Sex and Age (2 of 2) Sex=Female*



**Source: United States Census Bureau, Job-to-Job Flow Statistics, Release R2025Q1 (Beta)**

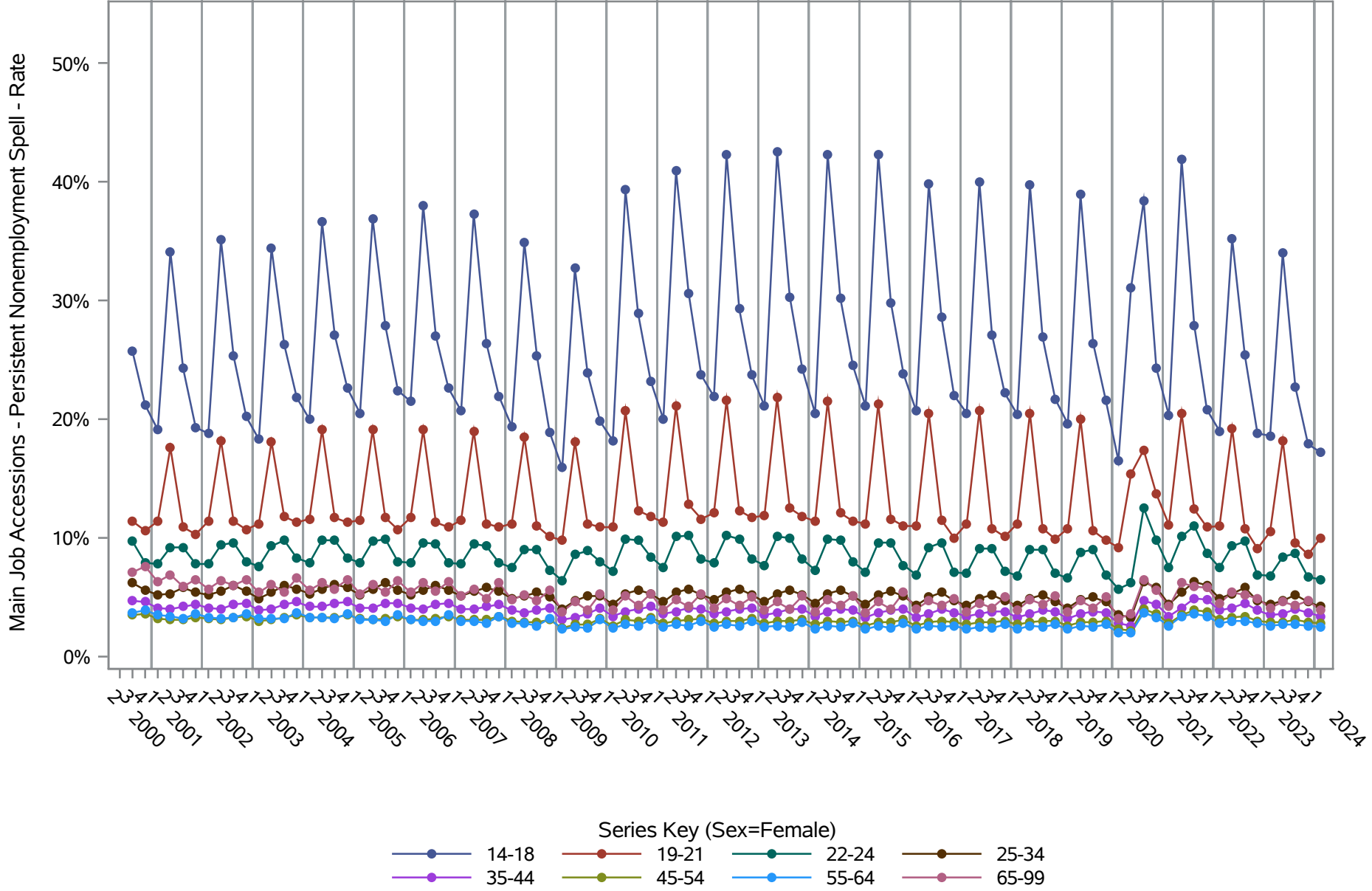


**National J2J Rates**  
**Main Job Accessions - Persistent Nonemployment Spell (Not Seasonally Adjusted)**  
*by Sex and Age (1 of 2) Sex=Male*



Source: United States Census Bureau, Job-to-Job Flow Statistics, Release R2025Q1 (Beta)

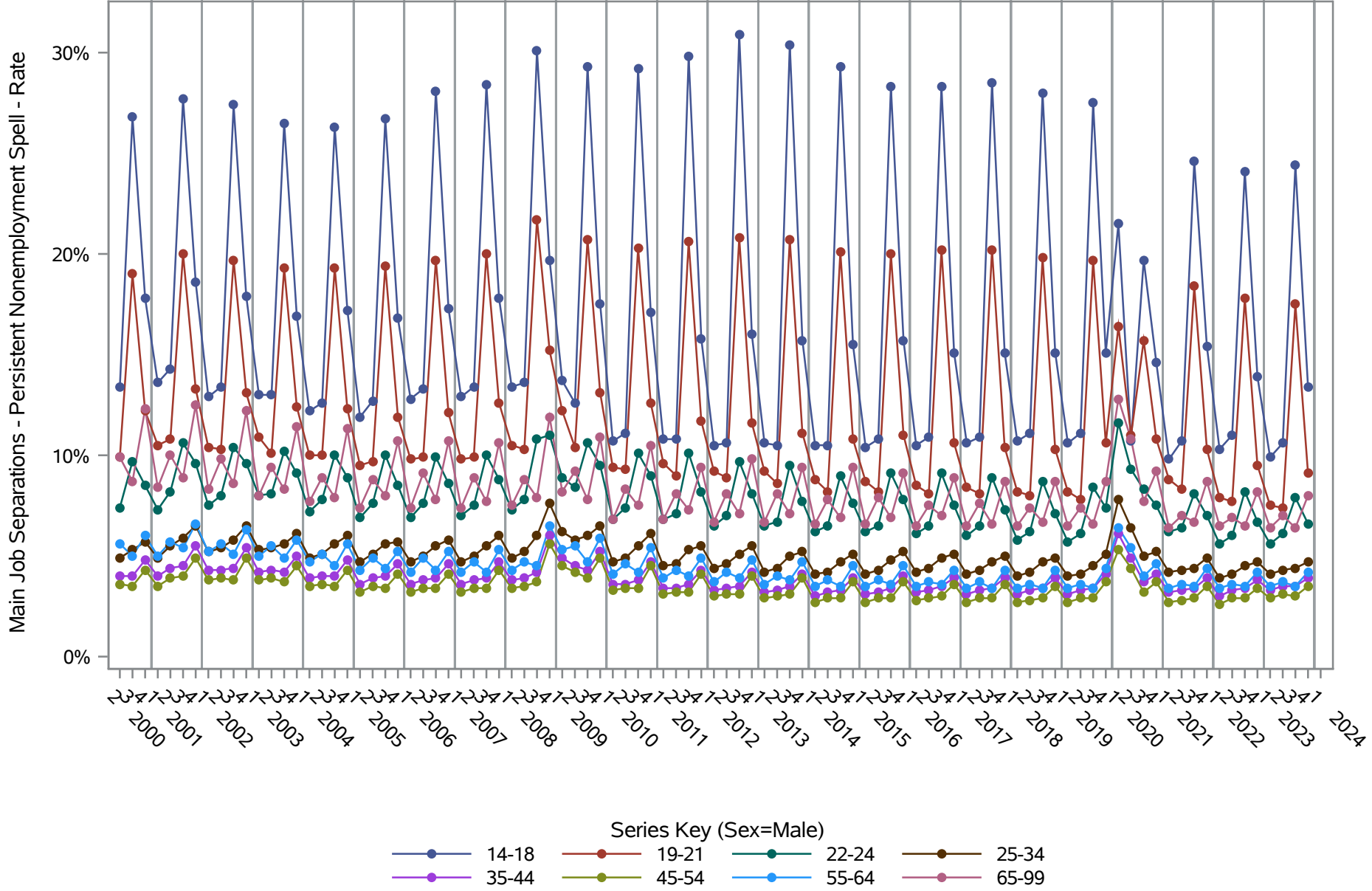
**National J2J Rates**  
**Main Job Accessions - Persistent Nonemployment Spell (Not Seasonally Adjusted)**  
*by Sex and Age (2 of 2) Sex=Female*



Source: United States Census Bureau, Job-to-Job Flow Statistics, Release R2025Q1 (Beta)

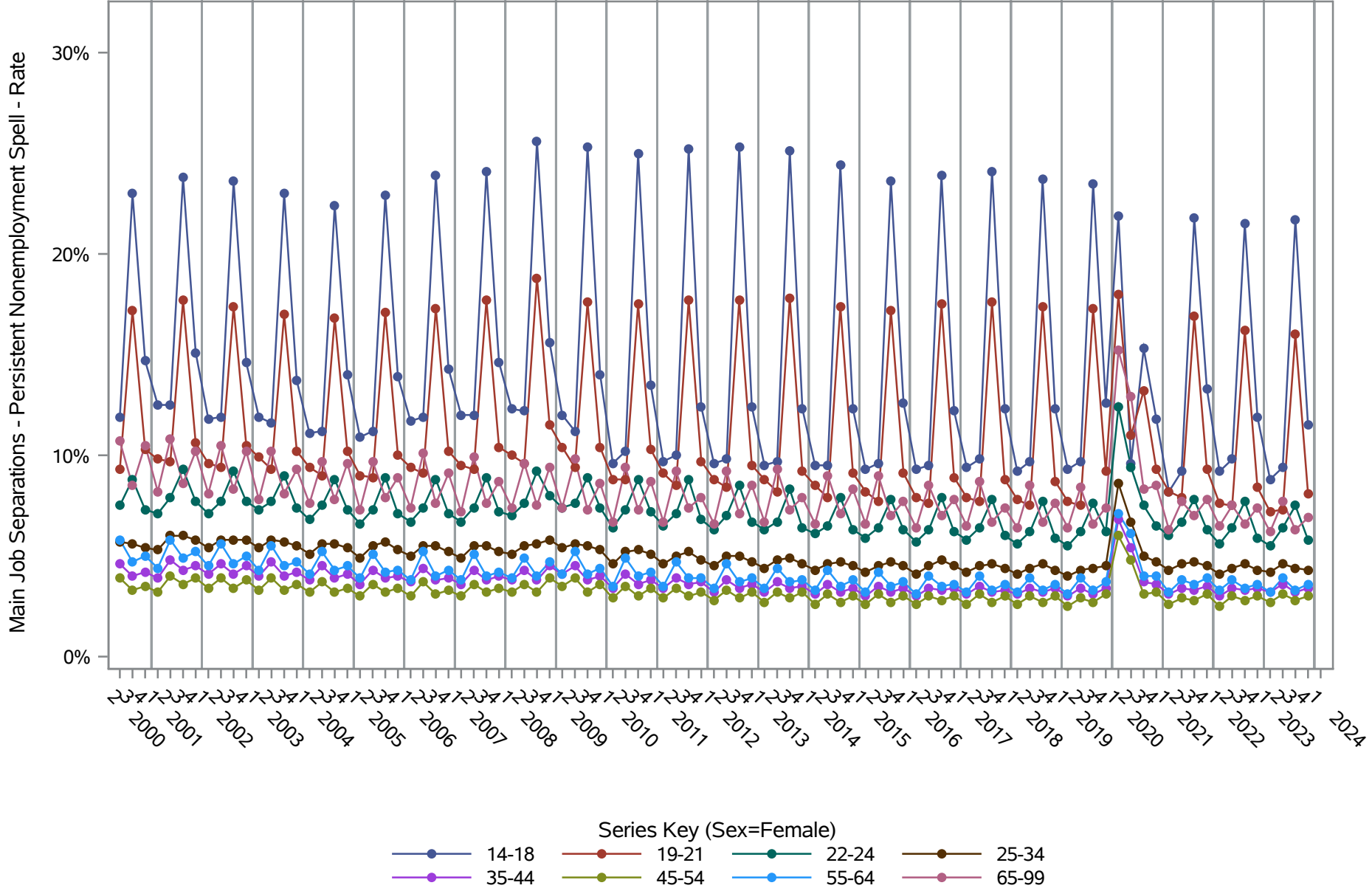
# National J2J Rates

## Main Job Separations - Persistent Nonemployment Spell (Not Seasonally Adjusted) by Sex and Age (1 of 2) Sex=Male



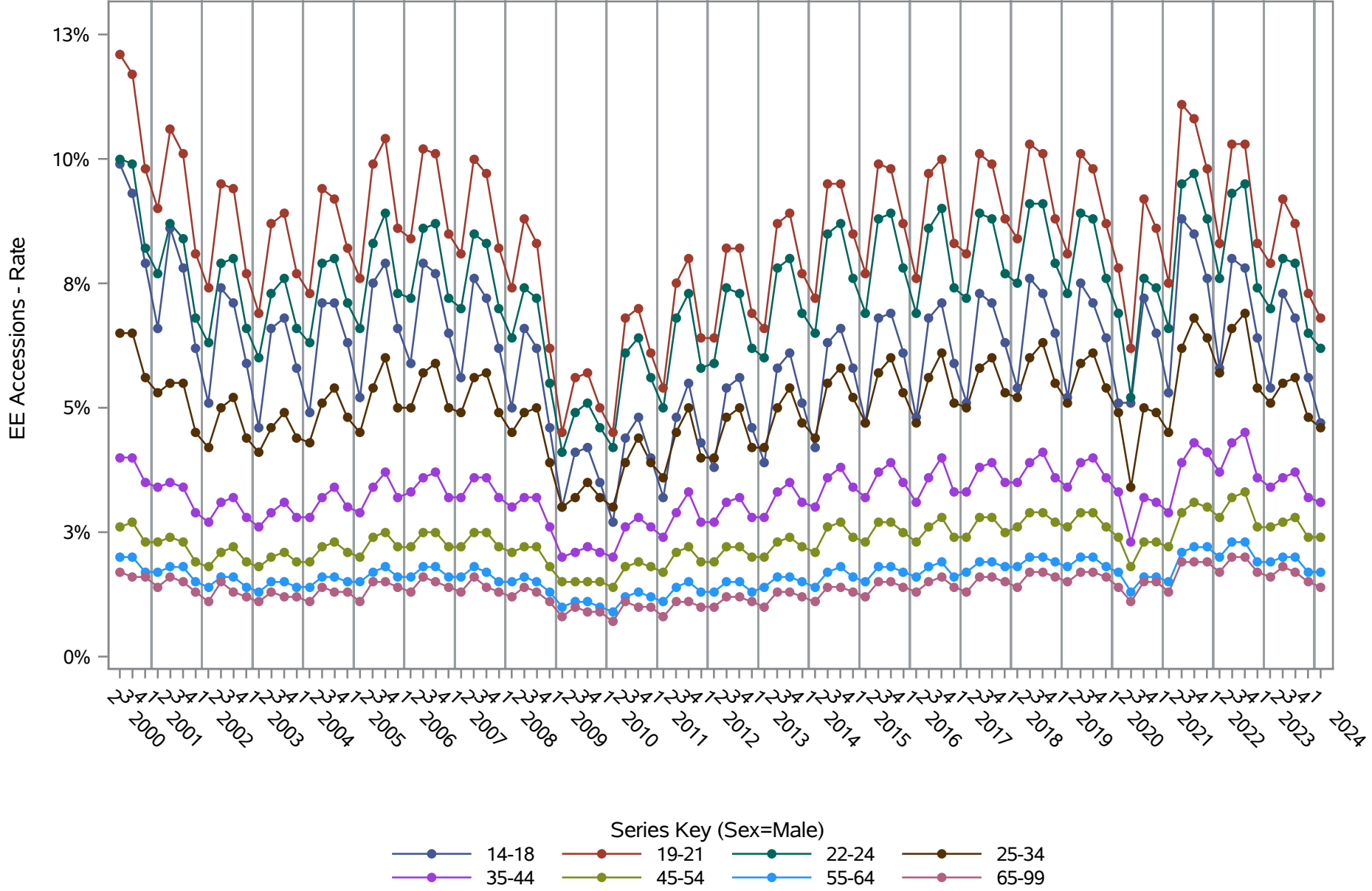
Source: United States Census Bureau, Job-to-Job Flow Statistics, Release R2025Q1 (Beta)

**National J2J Rates**  
**Main Job Separations - Persistent Nonemployment Spell (Not Seasonally Adjusted)**  
*by Sex and Age (2 of 2) Sex=Female*



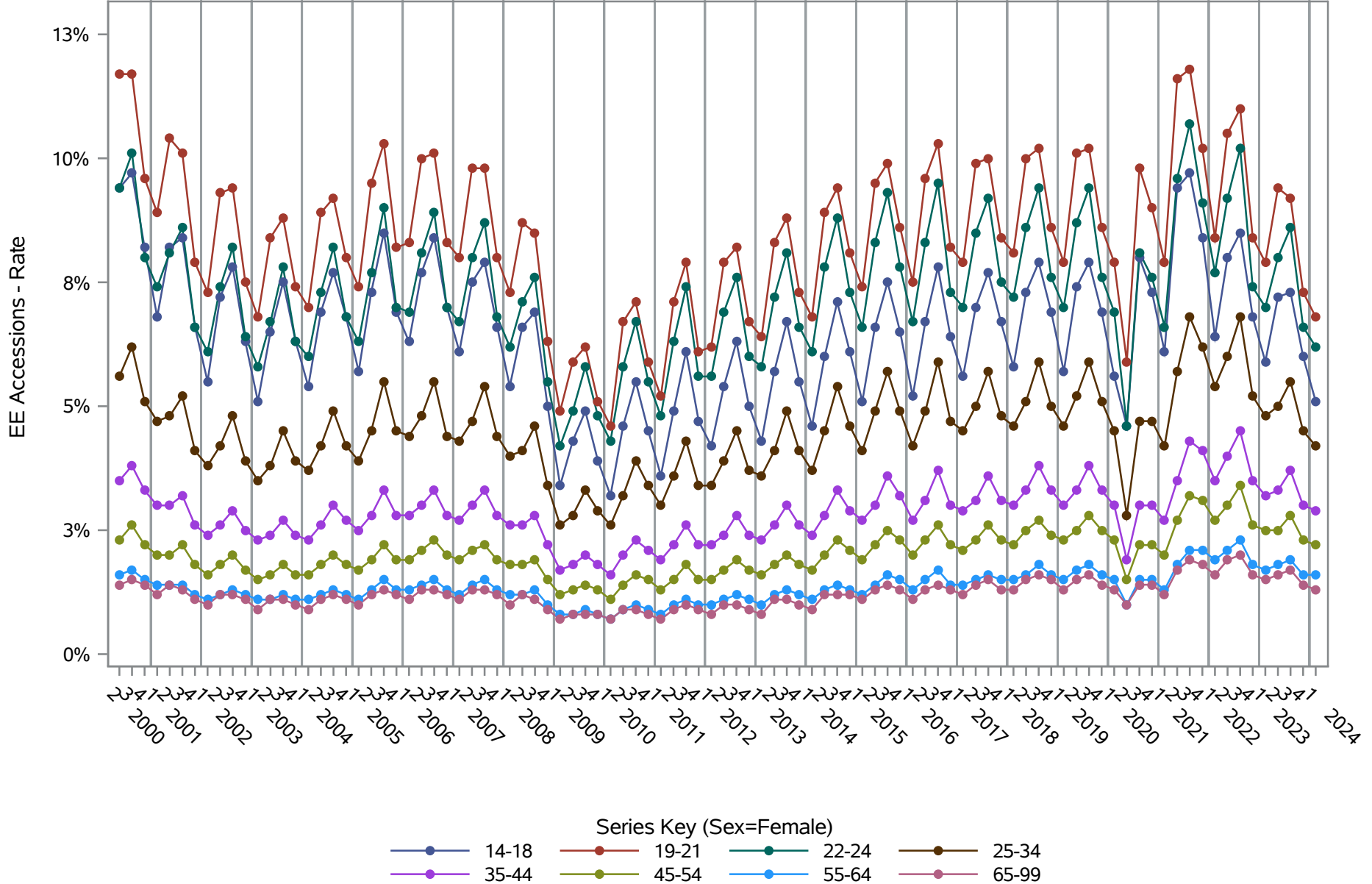
Source: United States Census Bureau, Job-to-Job Flow Statistics, Release R2025Q1 (Beta)

**National J2J Rates**  
**EE Accessions (Not Seasonally Adjusted)**  
*by Sex and Age (1 of 2) Sex=Male*



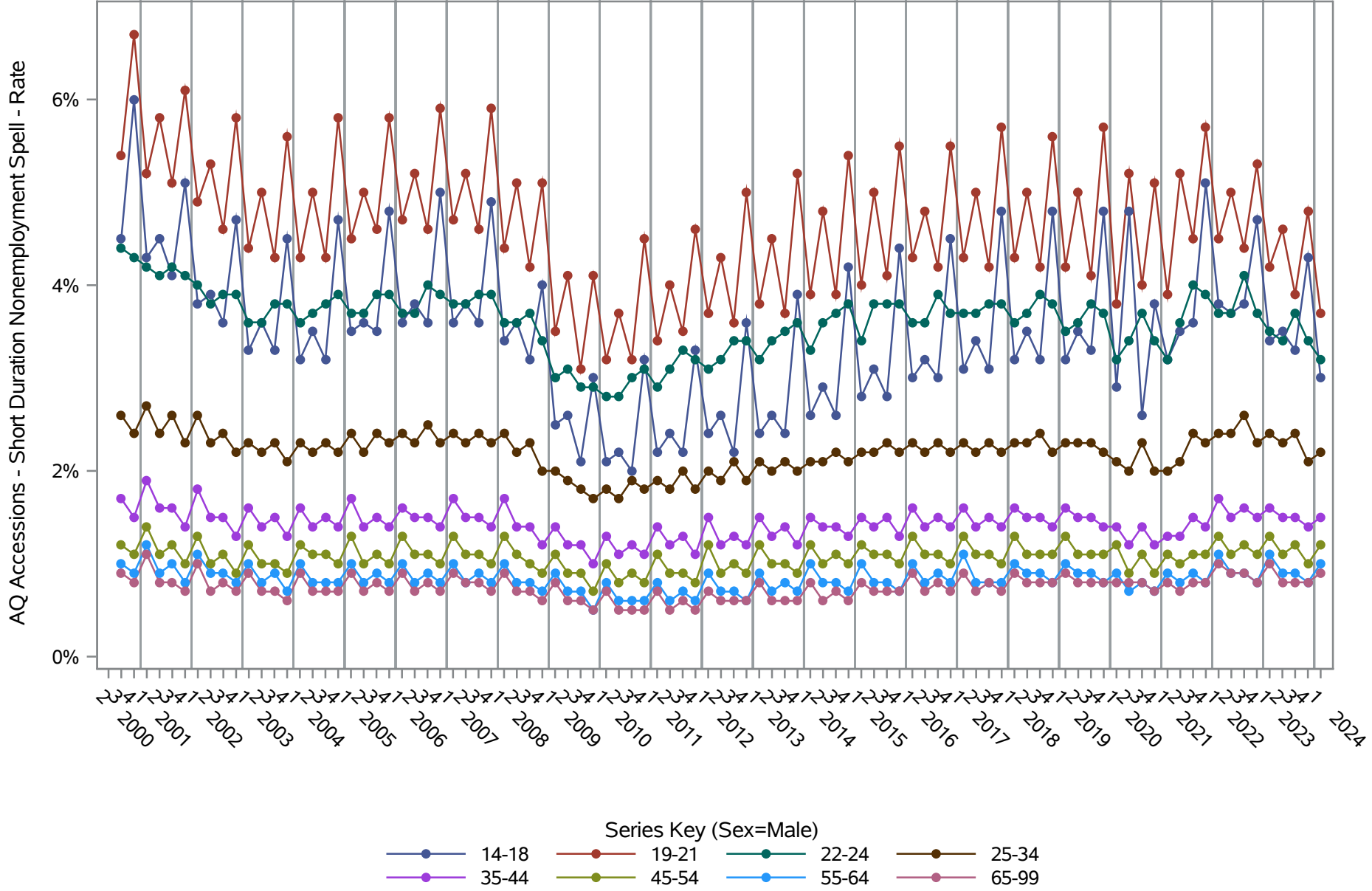
**Source: United States Census Bureau, Job-to-Job Flow Statistics, Release R2025Q1 (Beta)**

**National J2J Rates**  
**EE Accessions (Not Seasonally Adjusted)**  
*by Sex and Age (2 of 2) Sex=Female*



**Source: United States Census Bureau, Job-to-Job Flow Statistics, Release R2025Q1 (Beta)**

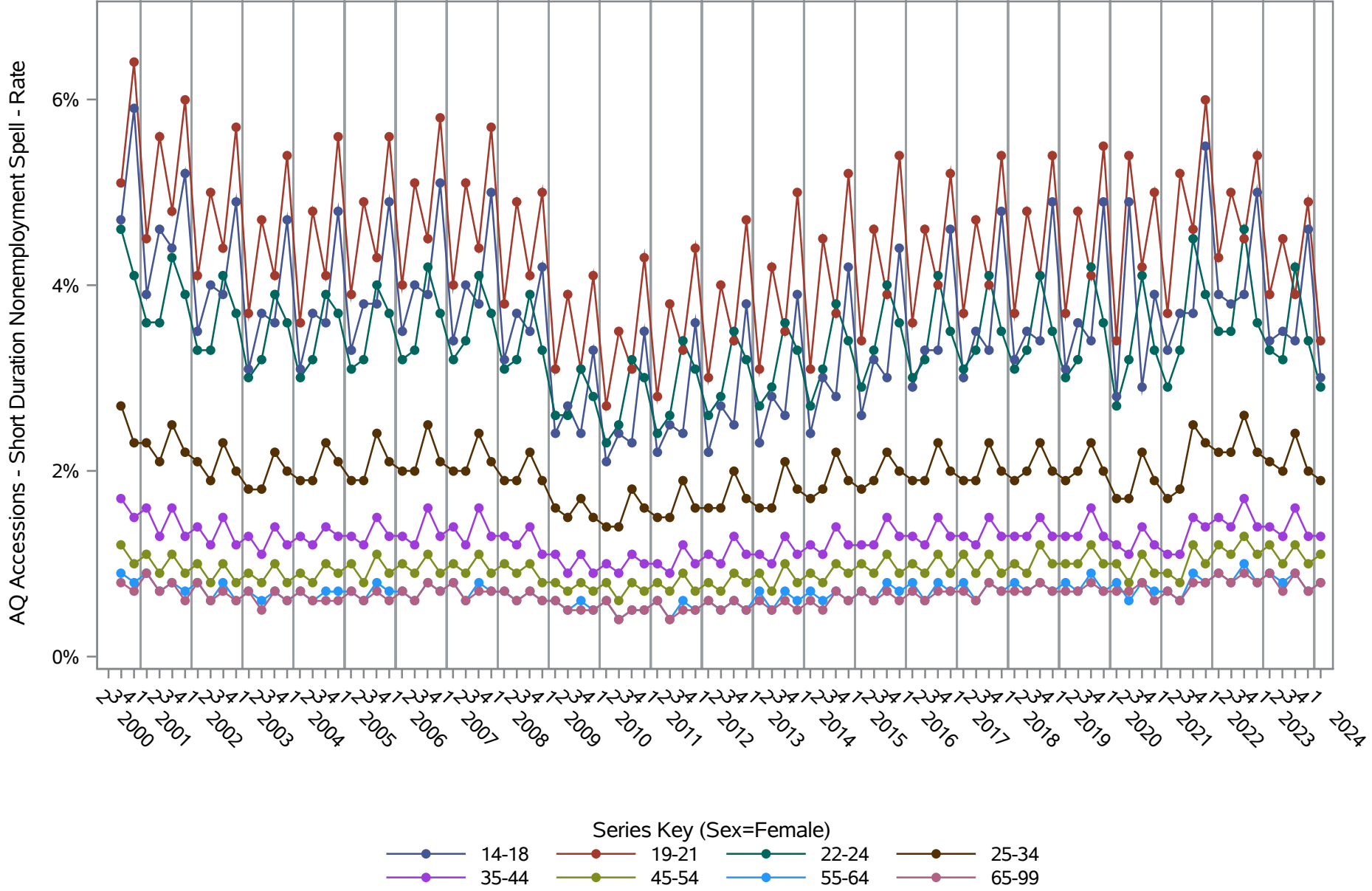
**National J2J Rates**  
**AQ Accessions - Short Duration Nonemployment Spell (Not Seasonally Adjusted)**  
*by Sex and Age (1 of 2) Sex=Male*



Source: United States Census Bureau, Job-to-Job Flow Statistics, Release R2025Q1 (Beta)



**National J2J Rates**  
**AQ Accessions - Short Duration Nonemployment Spell (Not Seasonally Adjusted)**  
*by Sex and Age (2 of 2) Sex=Female*

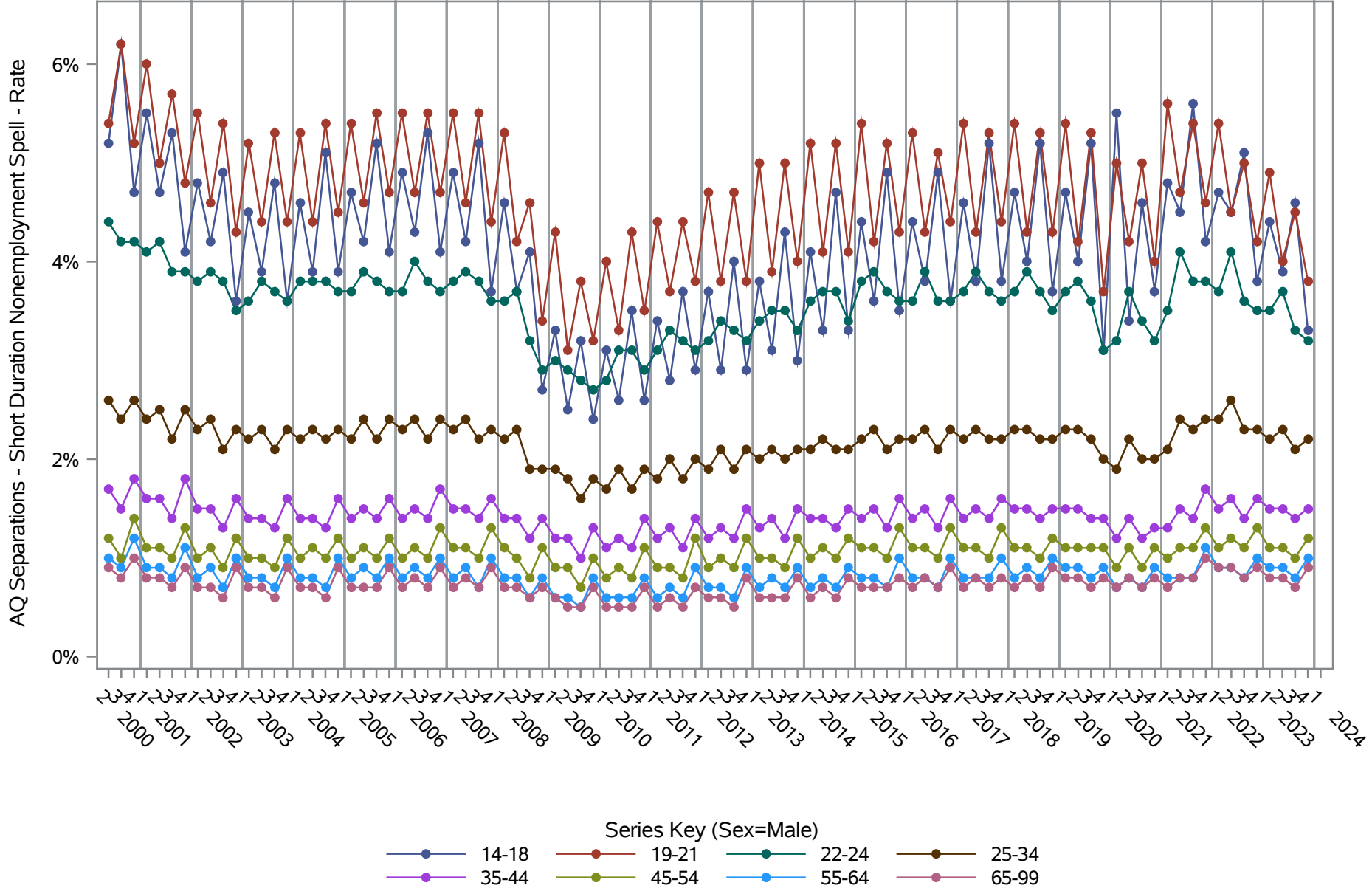


Source: United States Census Bureau, Job-to-Job Flow Statistics, Release R2025Q1 (Beta)

# National J2J Rates

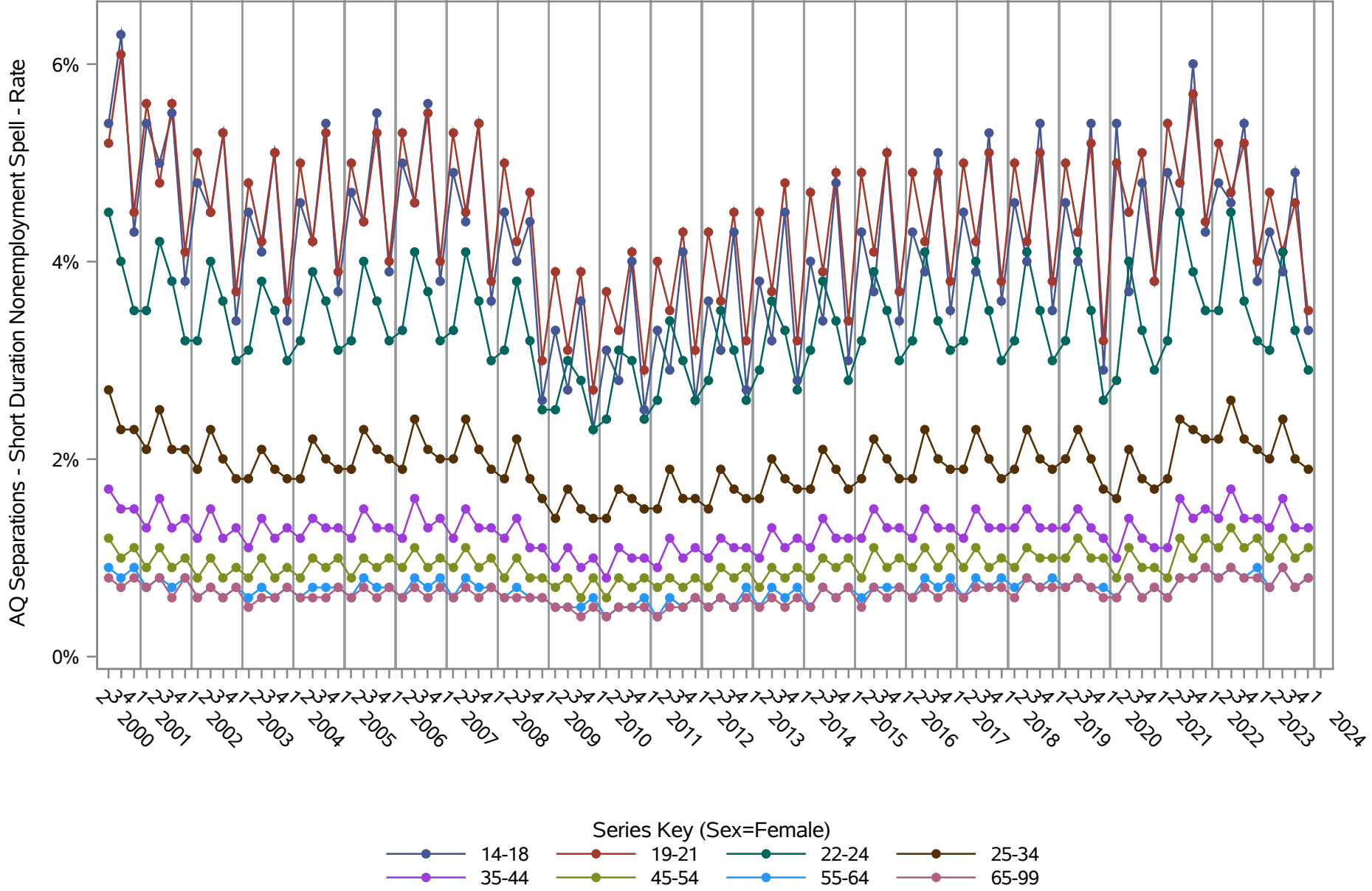
## AQ Separations - Short Duration Nonemployment Spell (Not Seasonally Adjusted)

*by Sex and Age (1 of 2) Sex=Male*



Source: United States Census Bureau, Job-to-Job Flow Statistics, Release R2025Q1 (Beta)

**National J2J Rates**  
**AQ Separations - Short Duration Nonemployment Spell (Not Seasonally Adjusted)**  
*by Sex and Age (2 of 2) Sex=Female*



Source: United States Census Bureau, Job-to-Job Flow Statistics, Release R2025Q1 (Beta)