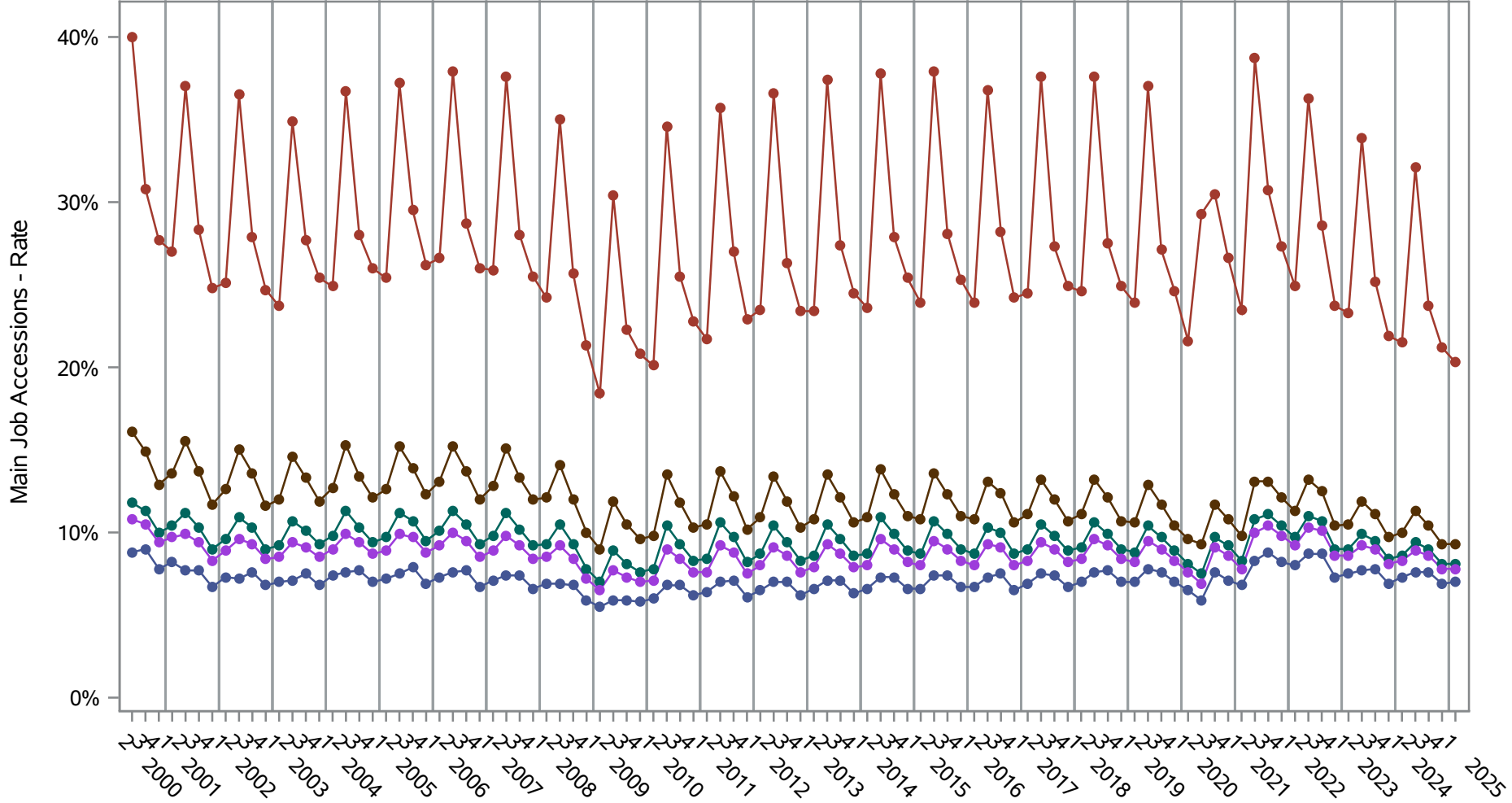


# National J2J Rates

## Main Job Accessions (Not Seasonally Adjusted)

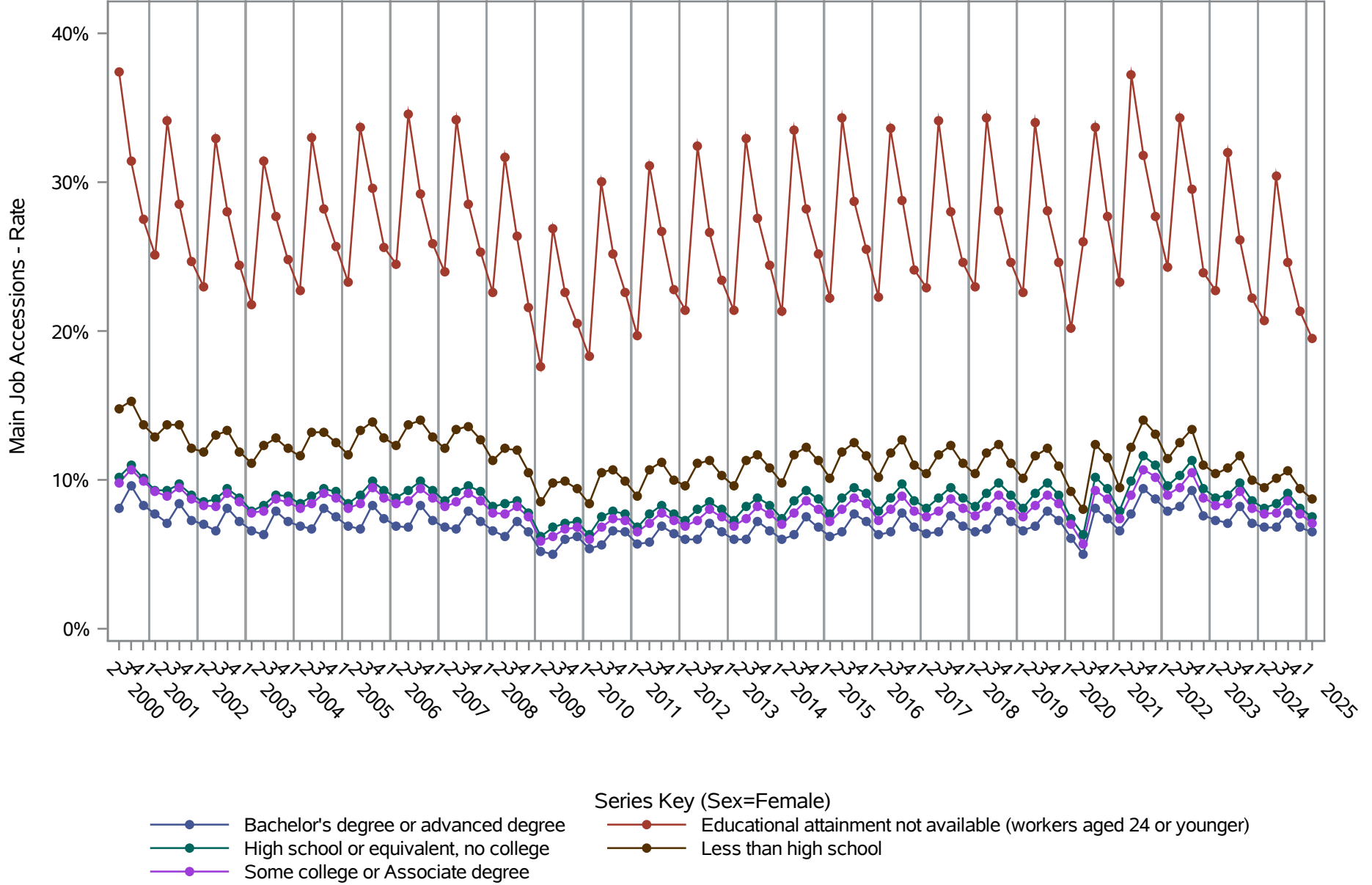
### by Sex and Education (1 of 2) Sex=Male



- Series Key (Sex=Male)
- Bachelor's degree or advanced degree
  - High school or equivalent, no college
  - Some college or Associate degree
  - Educational attainment not available (workers aged 24 or younger)
  - Less than high school

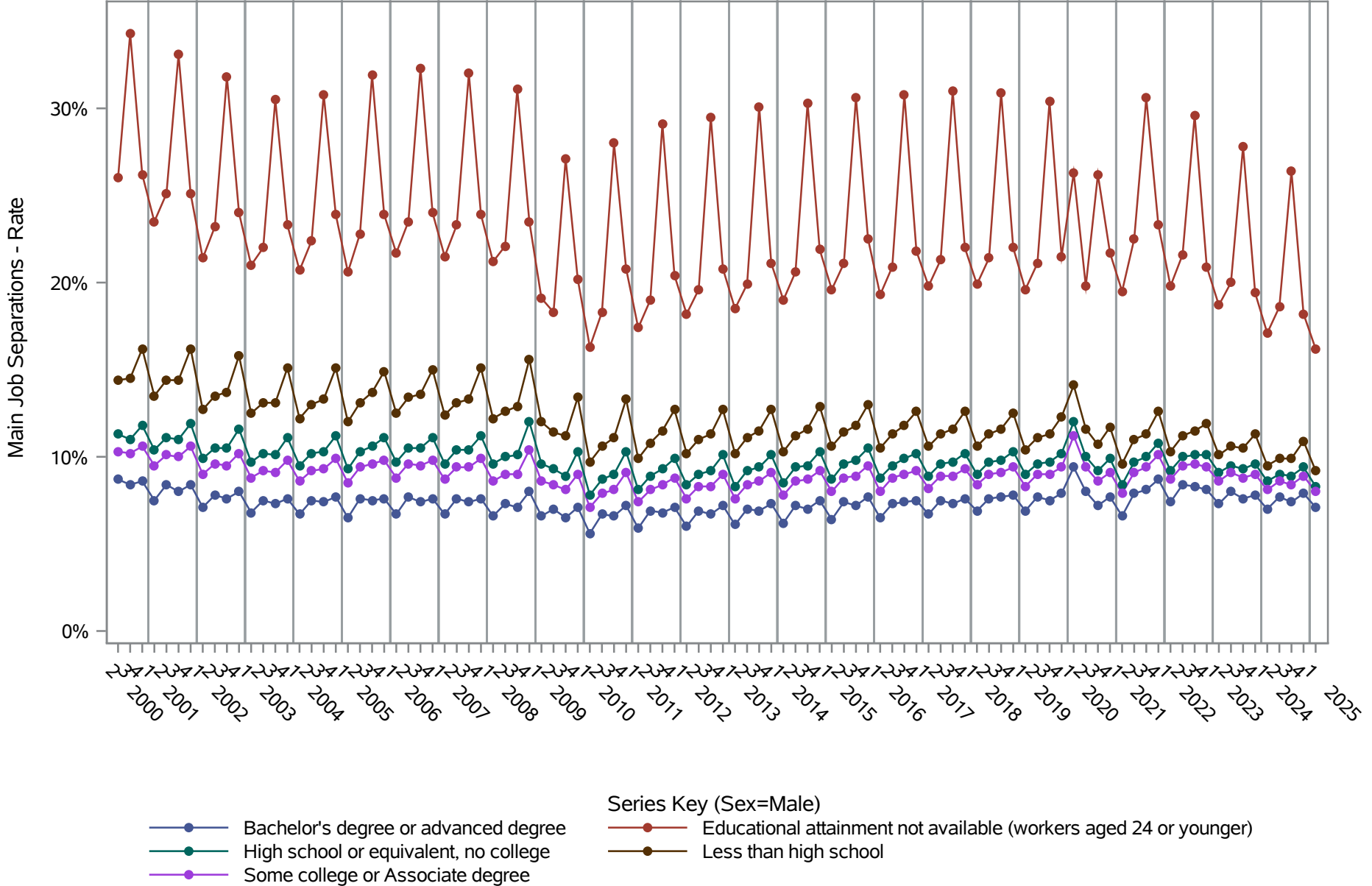
**Source: United States Census Bureau, Job-to-Job Flow Statistics, Release R2026Q1 (Beta)**

**National J2J Rates**  
**Main Job Accessions (Not Seasonally Adjusted)**  
*by Sex and Education (2 of 2) Sex=Female*



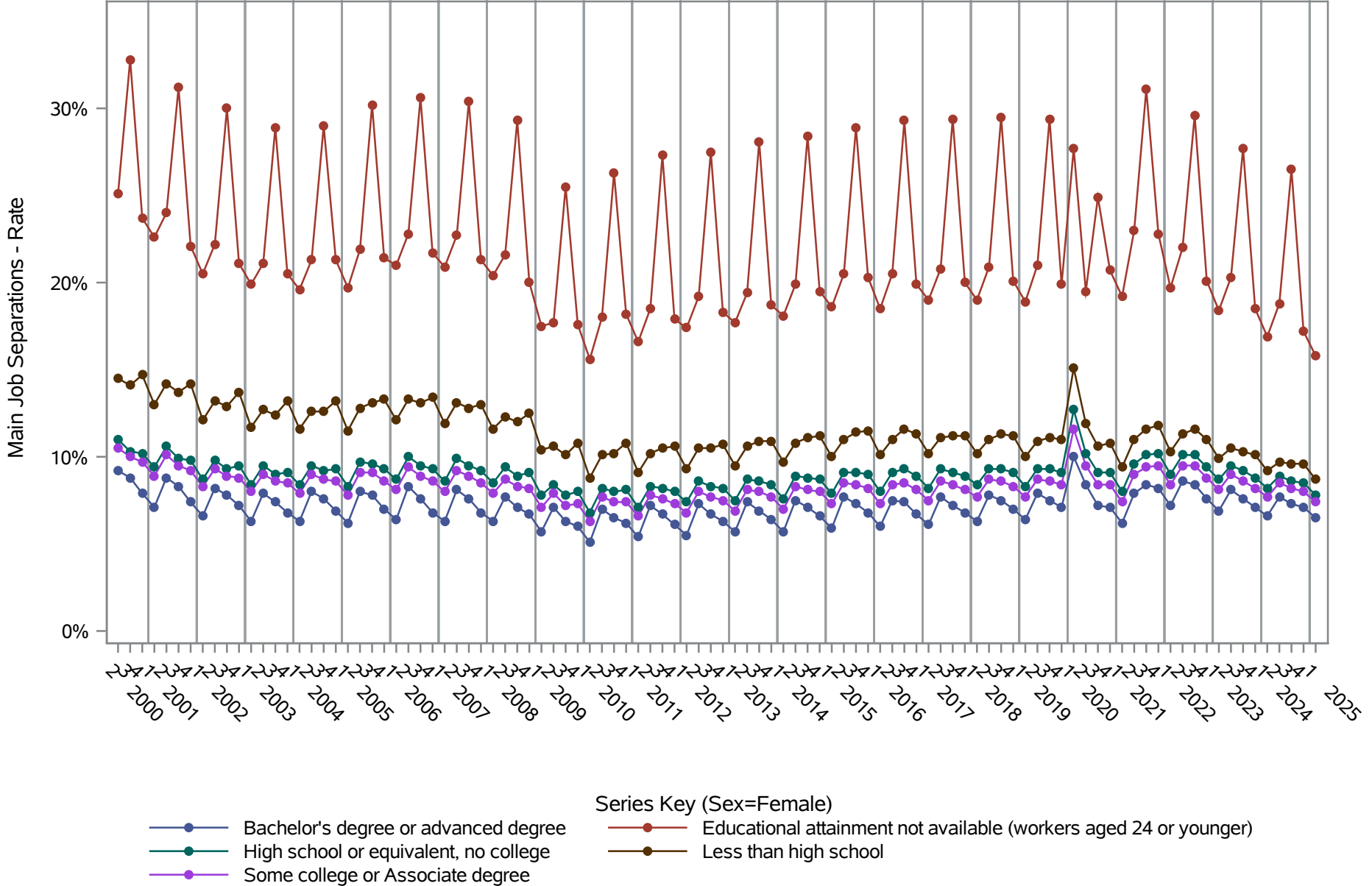
**Source: United States Census Bureau, Job-to-Job Flow Statistics, Release R2026Q1 (Beta)**

**National J2J Rates**  
**Main Job Separations (Not Seasonally Adjusted)**  
*by Sex and Education (1 of 2) Sex=Male*



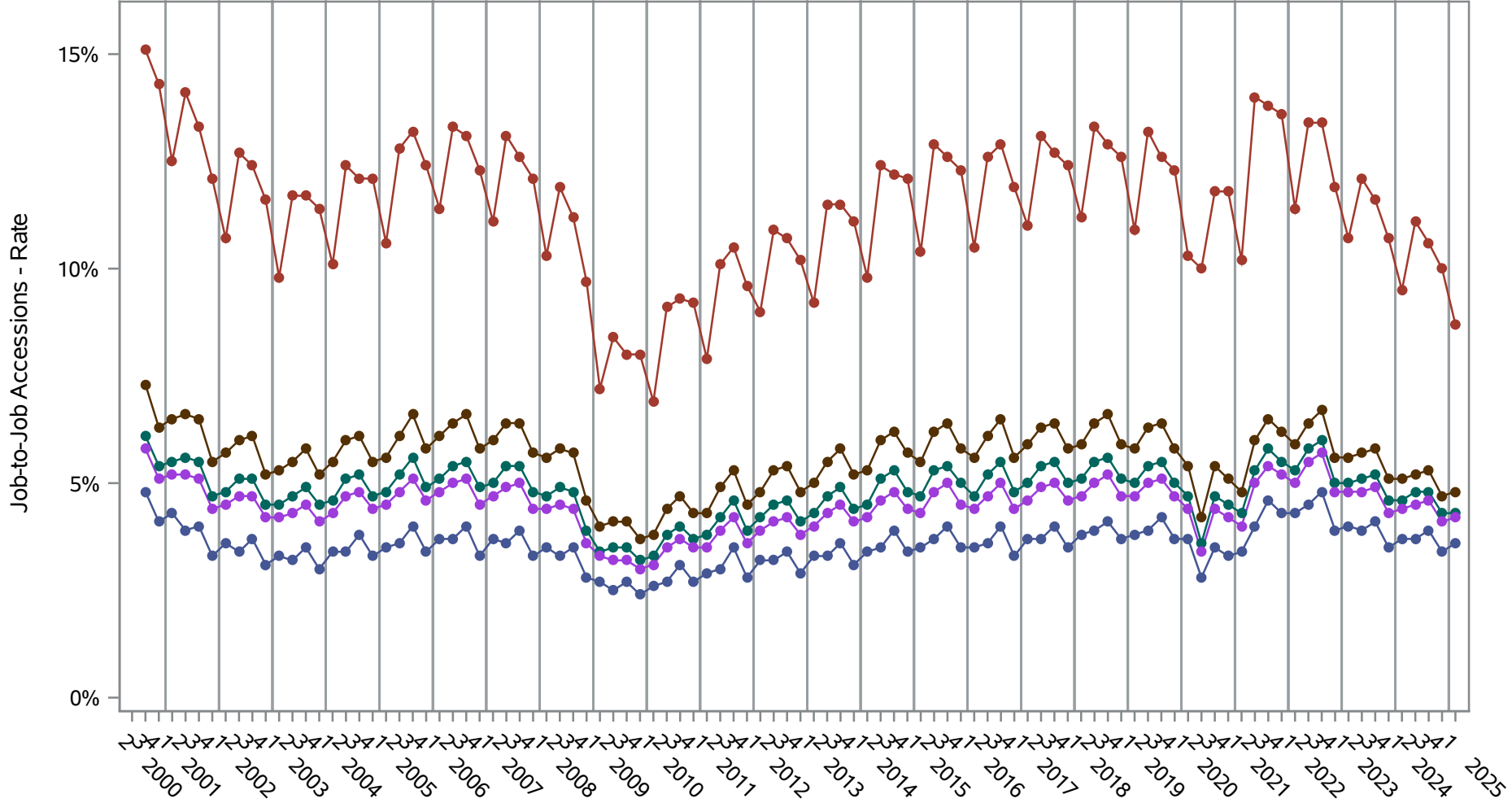
**Source: United States Census Bureau, Job-to-Job Flow Statistics, Release R2026Q1 (Beta)**

**National J2J Rates**  
**Main Job Separations (Not Seasonally Adjusted)**  
*by Sex and Education (2 of 2) Sex=Female*



**Source: United States Census Bureau, Job-to-Job Flow Statistics, Release R2026Q1 (Beta)**

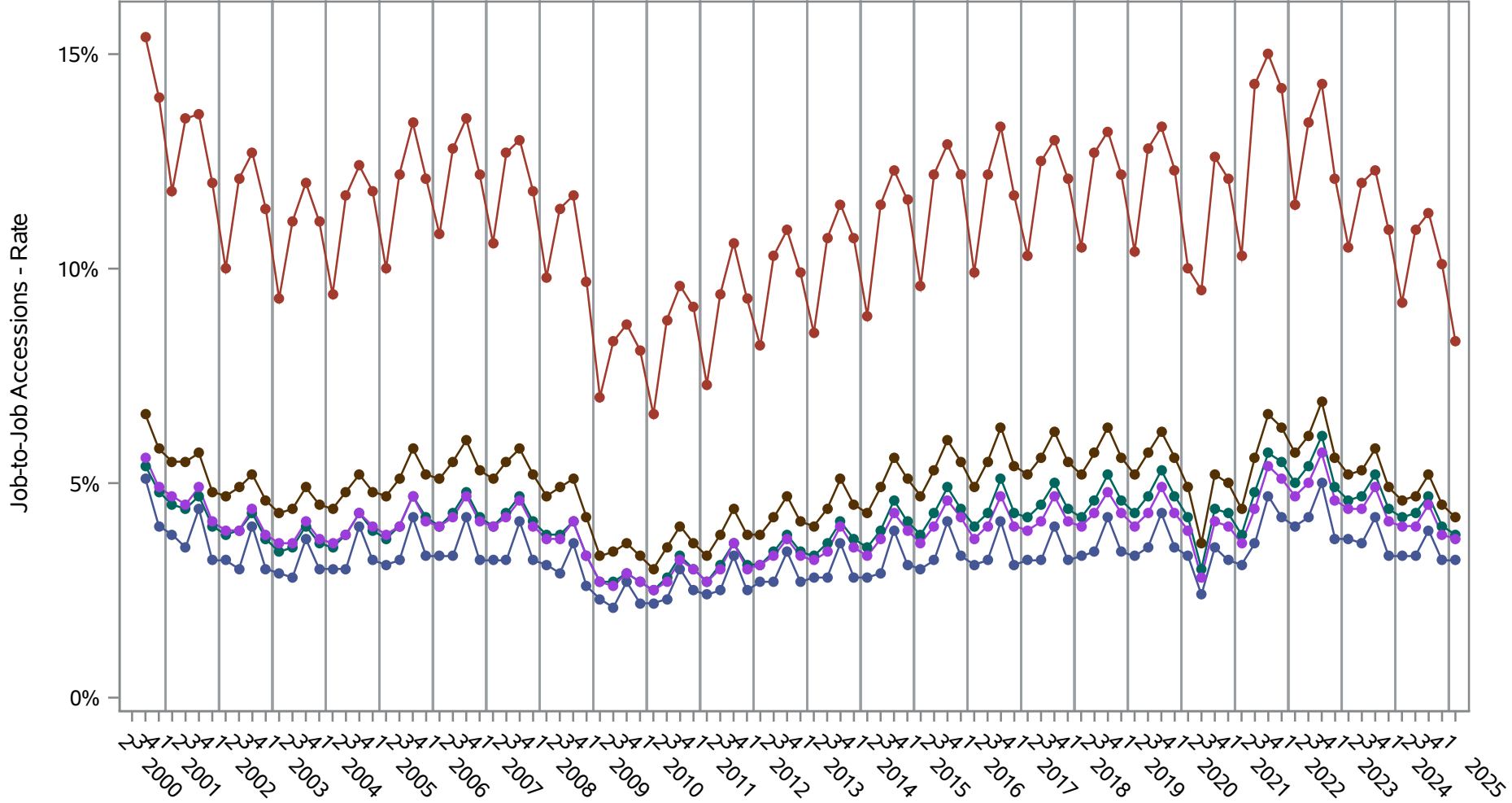
**National J2J Rates**  
**Job-to-Job Accessions (Not Seasonally Adjusted)**  
*by Sex and Education (1 of 2) Sex=Male*



- Series Key (Sex=Male)
- Bachelor's degree or advanced degree
  - High school or equivalent, no college
  - Some college or Associate degree
  - Educational attainment not available (workers aged 24 or younger)
  - Less than high school

**Source: United States Census Bureau, Job-to-Job Flow Statistics, Release R2026Q1 (Beta)**

**National J2J Rates**  
**Job-to-Job Accessions (Not Seasonally Adjusted)**  
*by Sex and Education (2 of 2) Sex=Female*

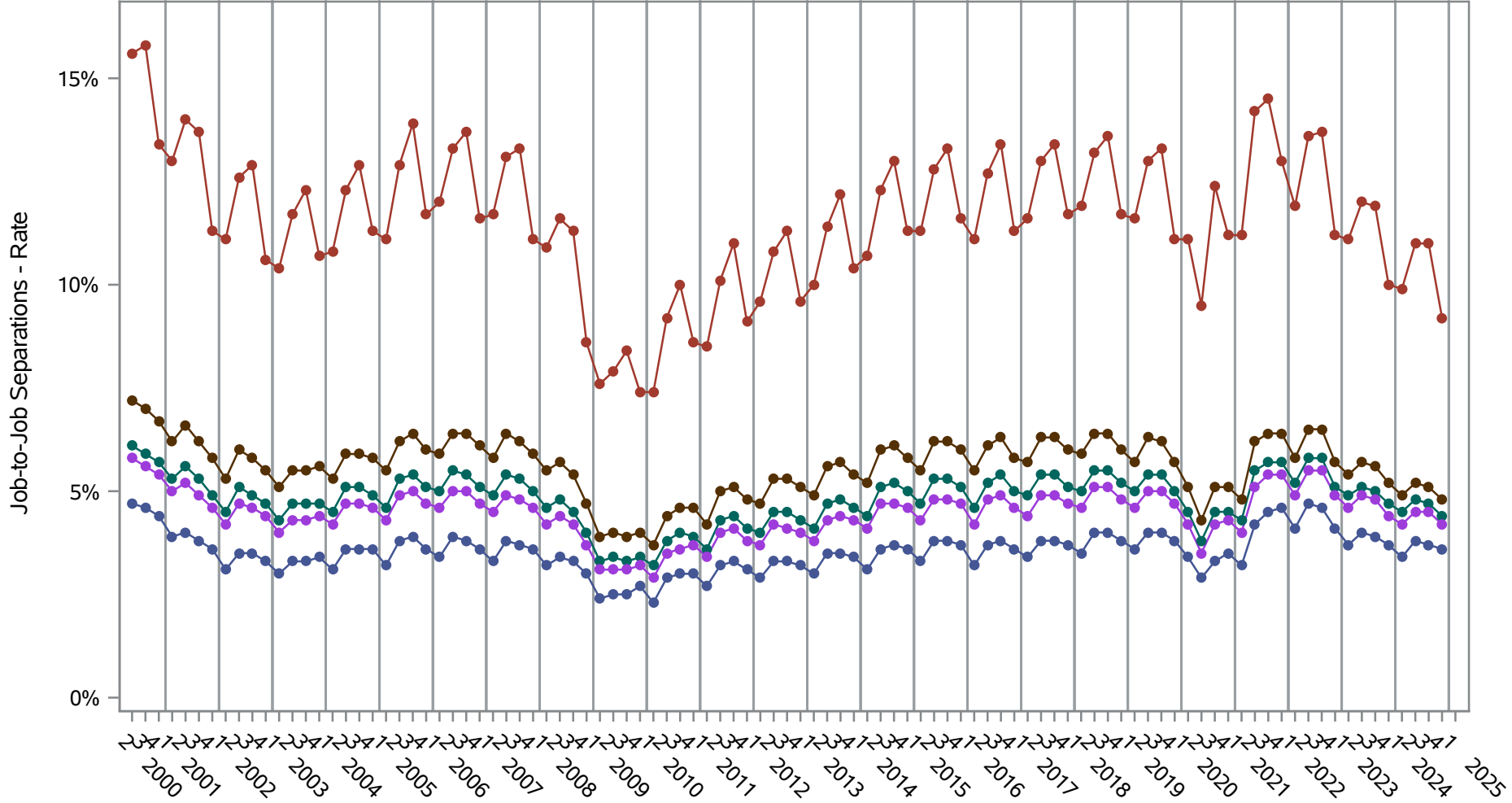


**Series Key (Sex=Female)**

- Bachelor's degree or advanced degree
- High school or equivalent, no college
- Some college or Associate degree
- Educational attainment not available (workers aged 24 or younger)
- Less than high school

**Source: United States Census Bureau, Job-to-Job Flow Statistics, Release R2026Q1 (Beta)**

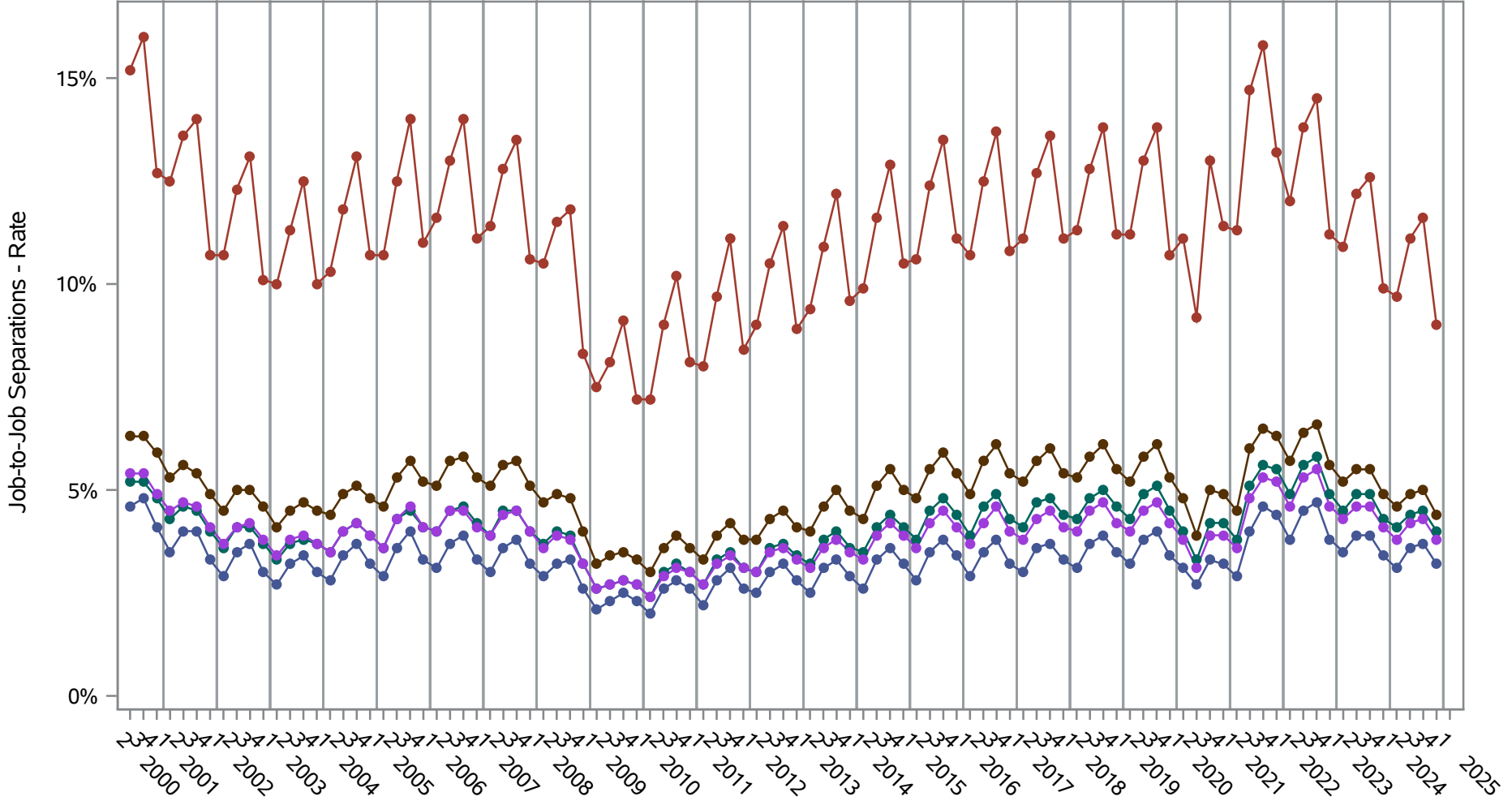
**National J2J Rates**  
**Job-to-Job Separations (Not Seasonally Adjusted)**  
*by Sex and Education (1 of 2) Sex=Male*



- Series Key (Sex=Male)
- Bachelor's degree or advanced degree
  - High school or equivalent, no college
  - Some college or Associate degree
  - Educational attainment not available (workers aged 24 or younger)
  - Less than high school

**Source: United States Census Bureau, Job-to-Job Flow Statistics, Release R2026Q1 (Beta)**

**National J2J Rates**  
**Job-to-Job Separations (Not Seasonally Adjusted)**  
*by Sex and Education (2 of 2) Sex=Female*

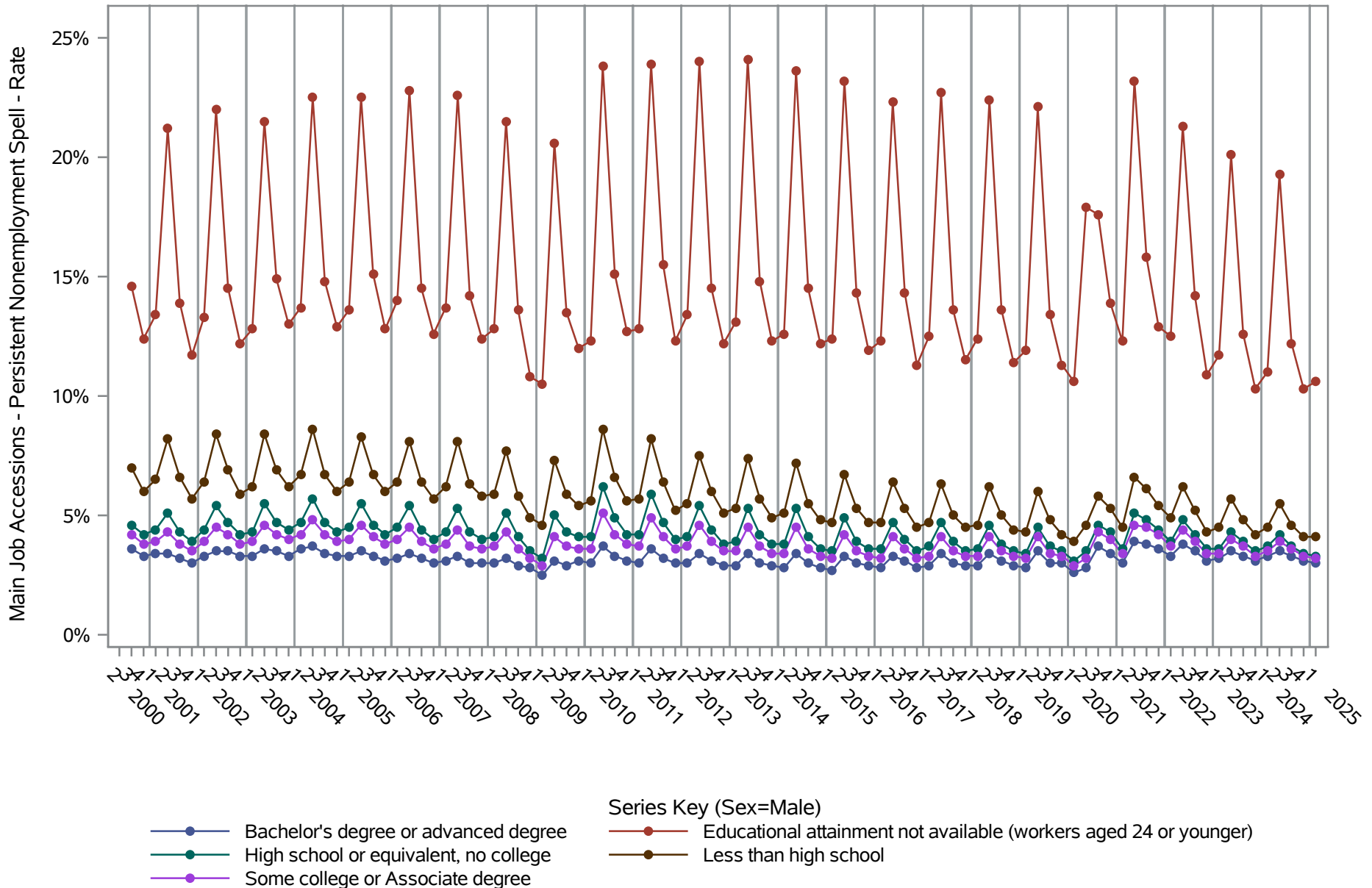


- Series Key (Sex=Female)
- Bachelor's degree or advanced degree
  - High school or equivalent, no college
  - Some college or Associate degree
  - Educational attainment not available (workers aged 24 or younger)
  - Less than high school

**Source: United States Census Bureau, Job-to-Job Flow Statistics, Release R2026Q1 (Beta)**

# National J2J Rates

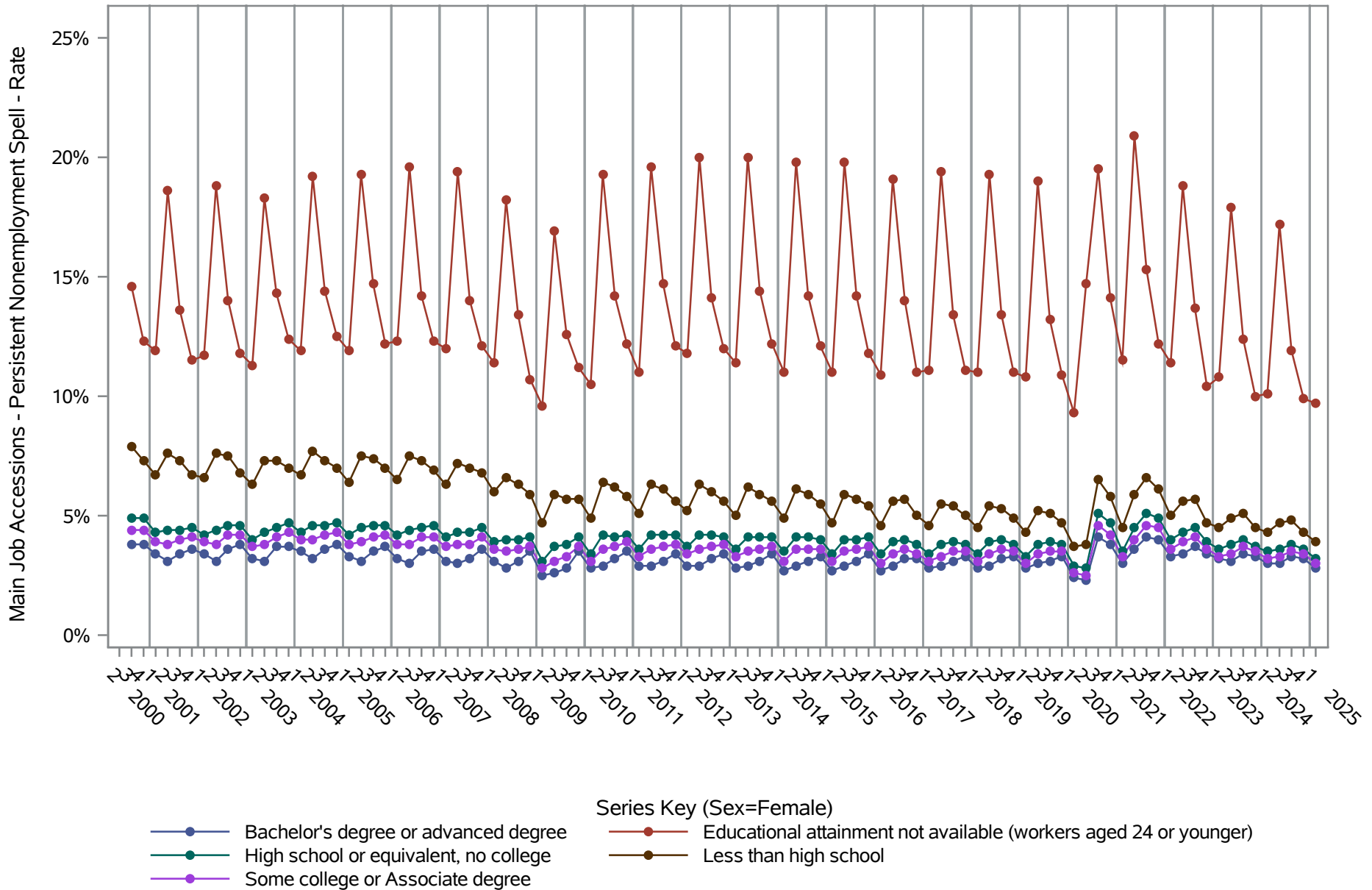
## Main Job Accessions - Persistent Nonemployment Spell (Not Seasonally Adjusted) by Sex and Education (1 of 2) Sex=Male



**Source: United States Census Bureau, Job-to-Job Flow Statistics, Release R2026Q1 (Beta)**

# National J2J Rates

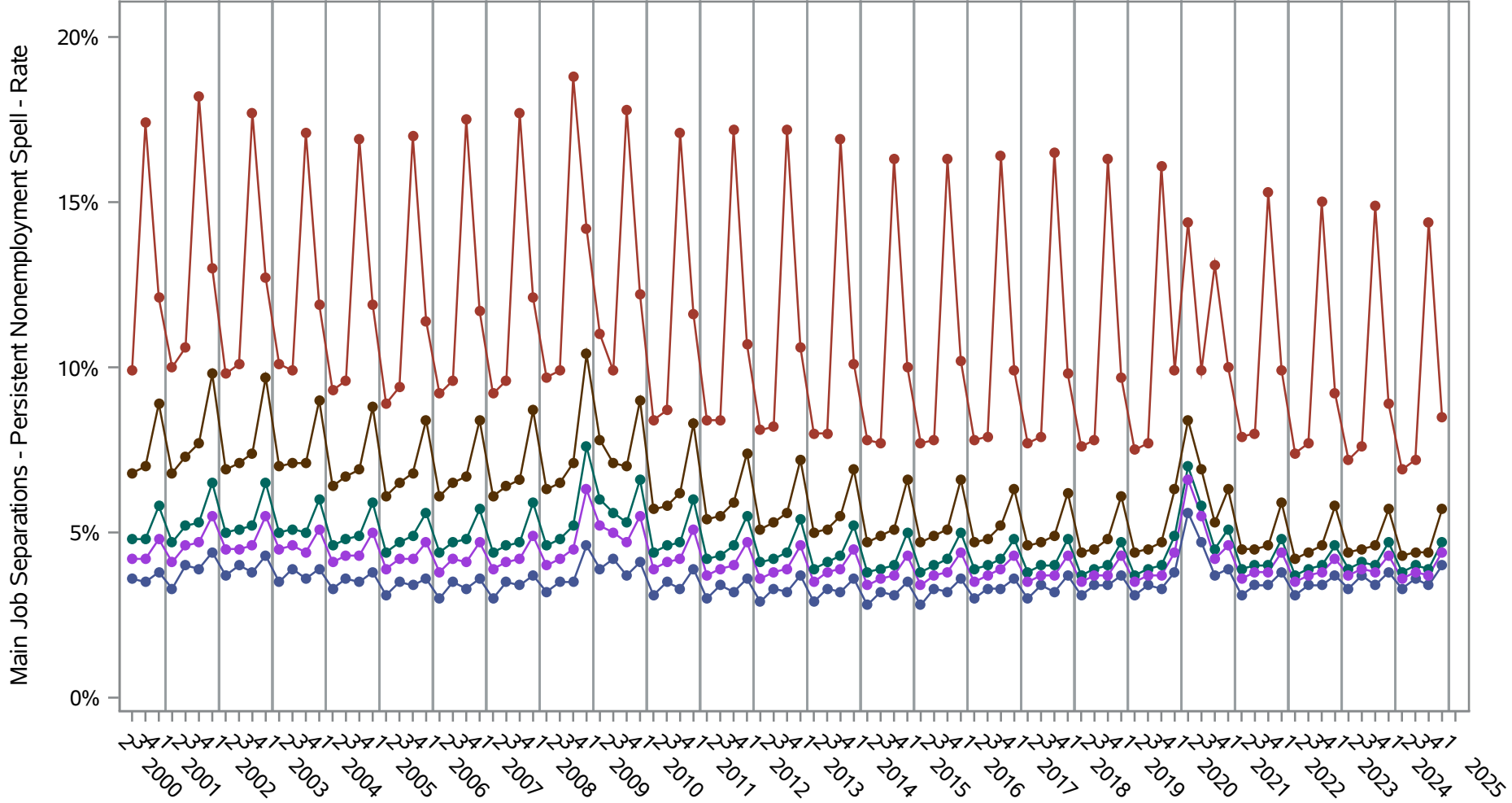
## Main Job Accessions - Persistent Nonemployment Spell (Not Seasonally Adjusted) by Sex and Education (2 of 2) Sex=Female



Source: United States Census Bureau, Job-to-Job Flow Statistics, Release R2026Q1 (Beta)

# National J2J Rates

## Main Job Separations - Persistent Nonemployment Spell (Not Seasonally Adjusted) by Sex and Education (1 of 2) Sex=Male

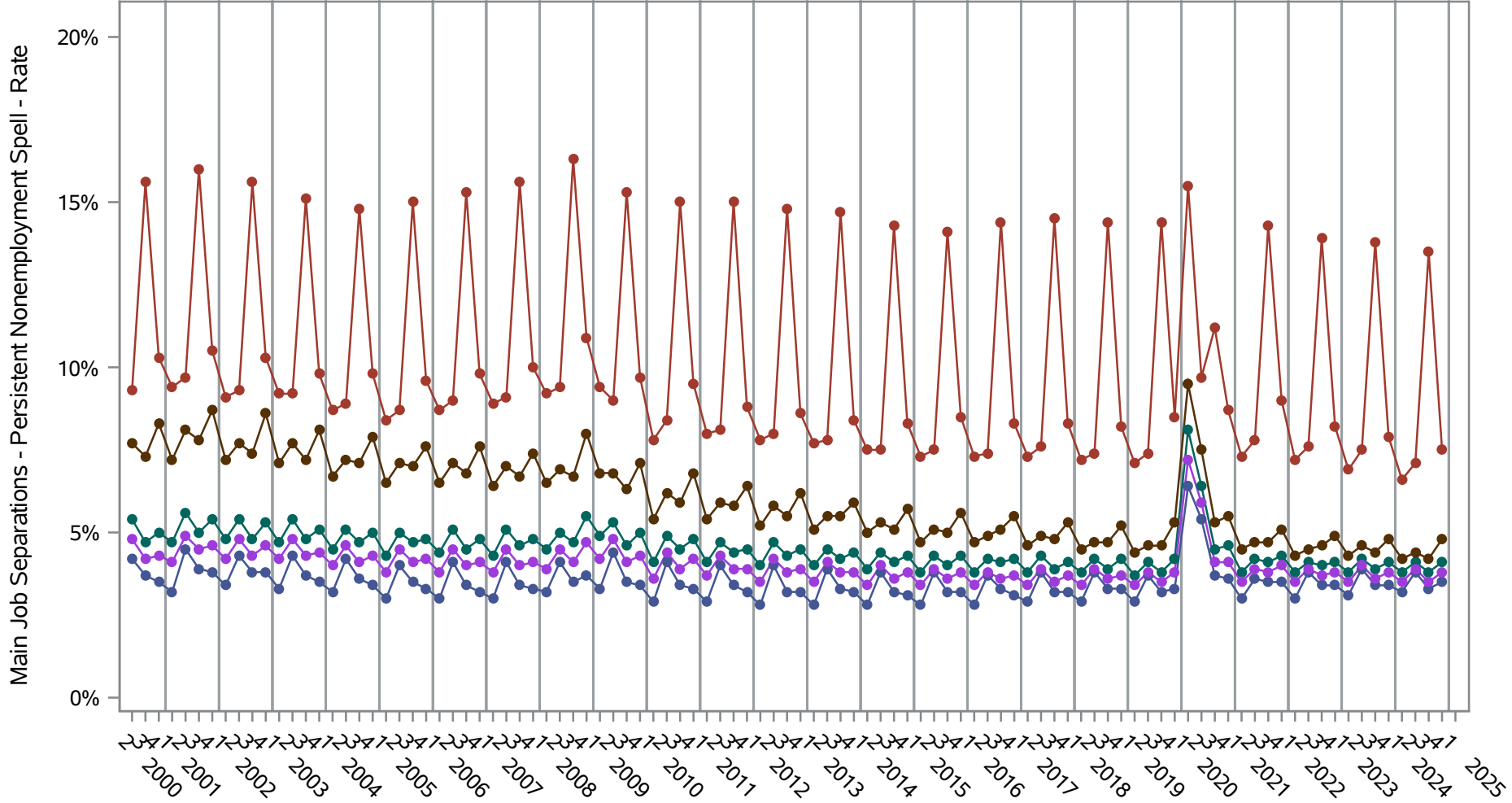


- Series Key (Sex=Male)
- Bachelor's degree or advanced degree
  - High school or equivalent, no college
  - Some college or Associate degree
  - Educational attainment not available (workers aged 24 or younger)
  - Less than high school

Source: United States Census Bureau, Job-to-Job Flow Statistics, Release R2026Q1 (Beta)

# National J2J Rates

## Main Job Separations - Persistent Nonemployment Spell (Not Seasonally Adjusted) by Sex and Education (2 of 2) Sex=Female

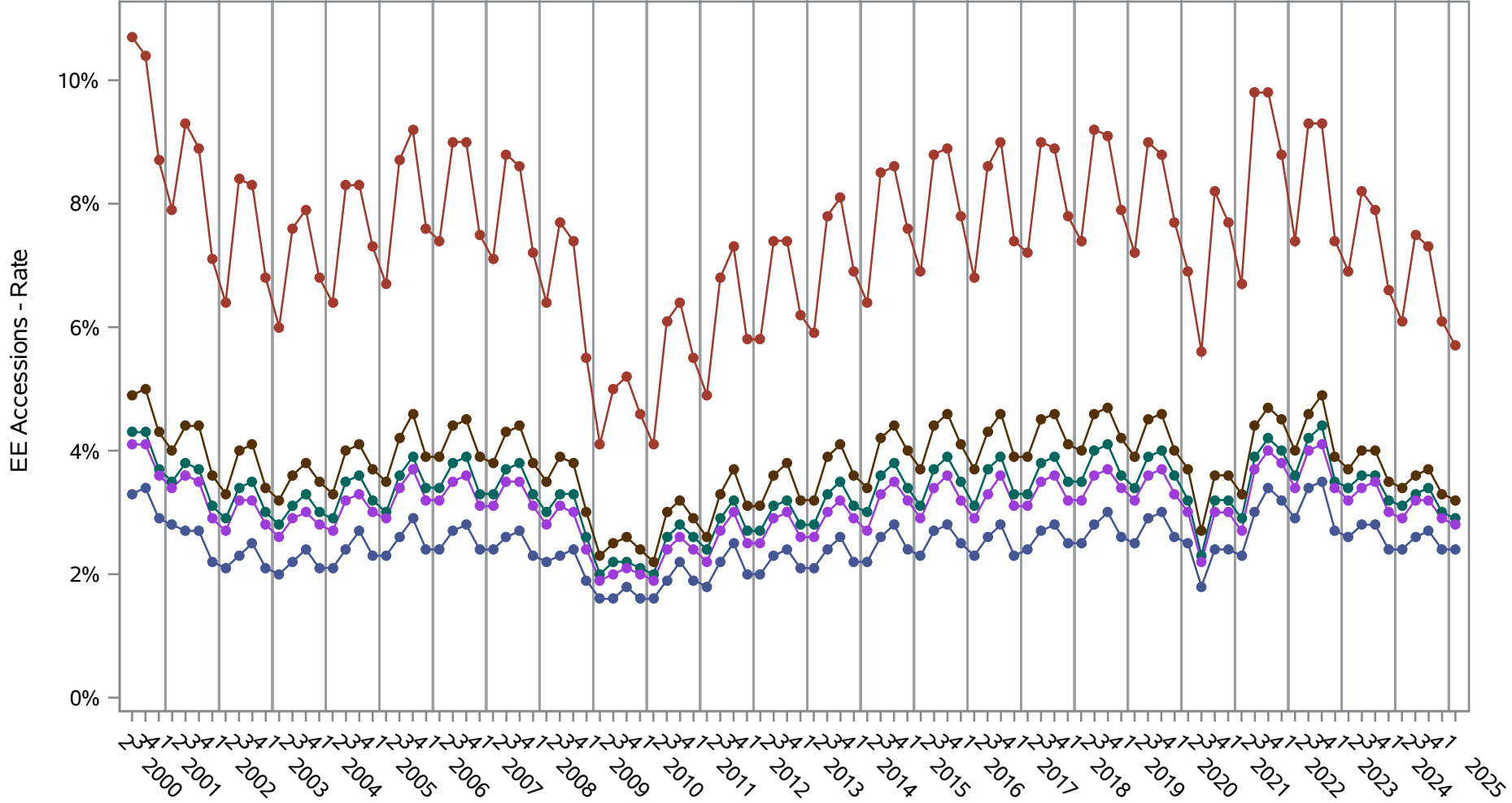


Series Key (Sex=Female)

- Bachelor's degree or advanced degree
- High school or equivalent, no college
- Some college or Associate degree
- Educational attainment not available (workers aged 24 or younger)
- Less than high school

Source: United States Census Bureau, Job-to-Job Flow Statistics, Release R2026Q1 (Beta)

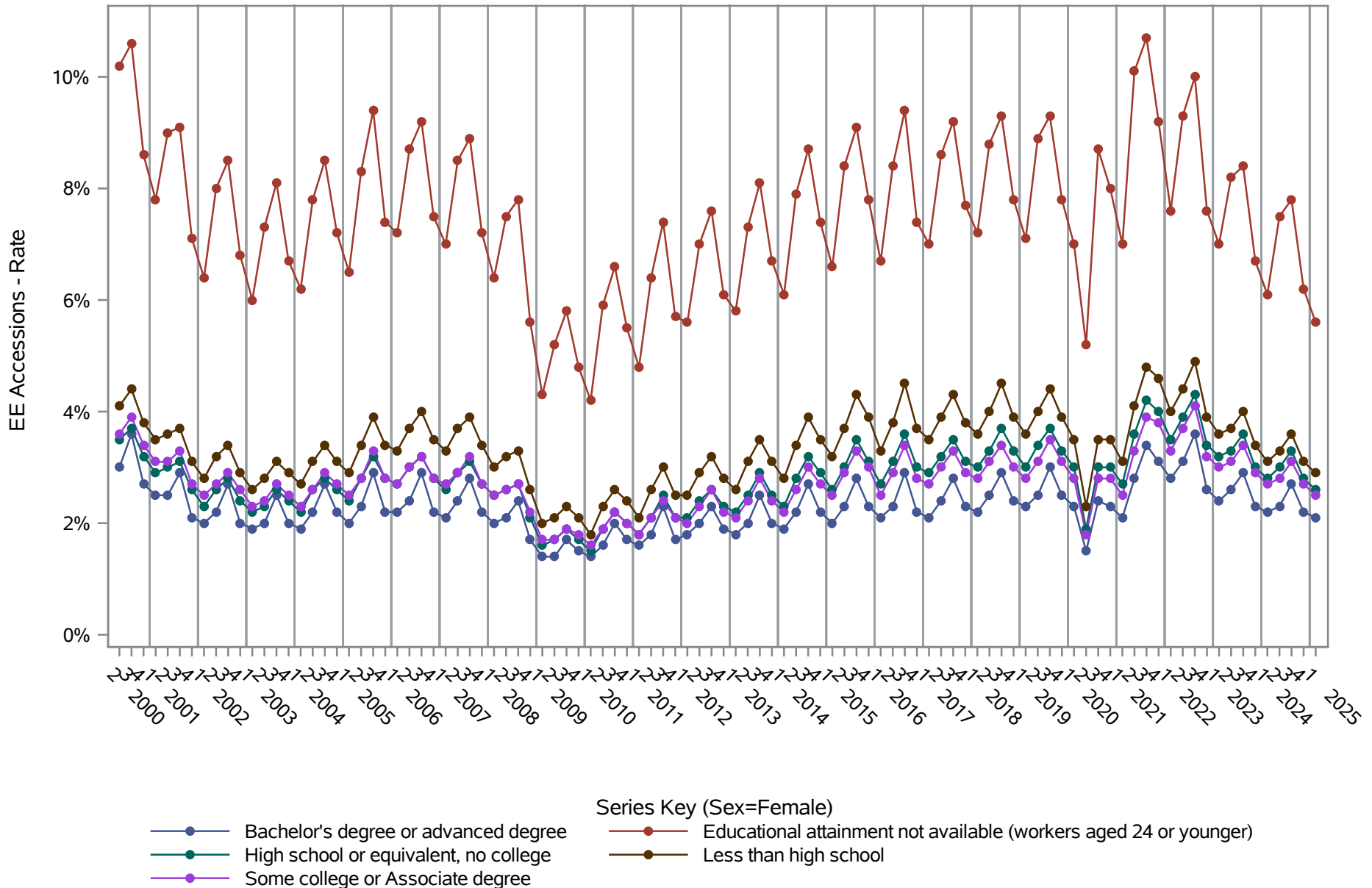
**National J2J Rates**  
**EE Accessions (Not Seasonally Adjusted)**  
*by Sex and Education (1 of 2) Sex=Male*



- Series Key (Sex=Male)
- Bachelor's degree or advanced degree
  - High school or equivalent, no college
  - Some college or Associate degree
  - Educational attainment not available (workers aged 24 or younger)
  - Less than high school

**Source: United States Census Bureau, Job-to-Job Flow Statistics, Release R2026Q1 (Beta)**

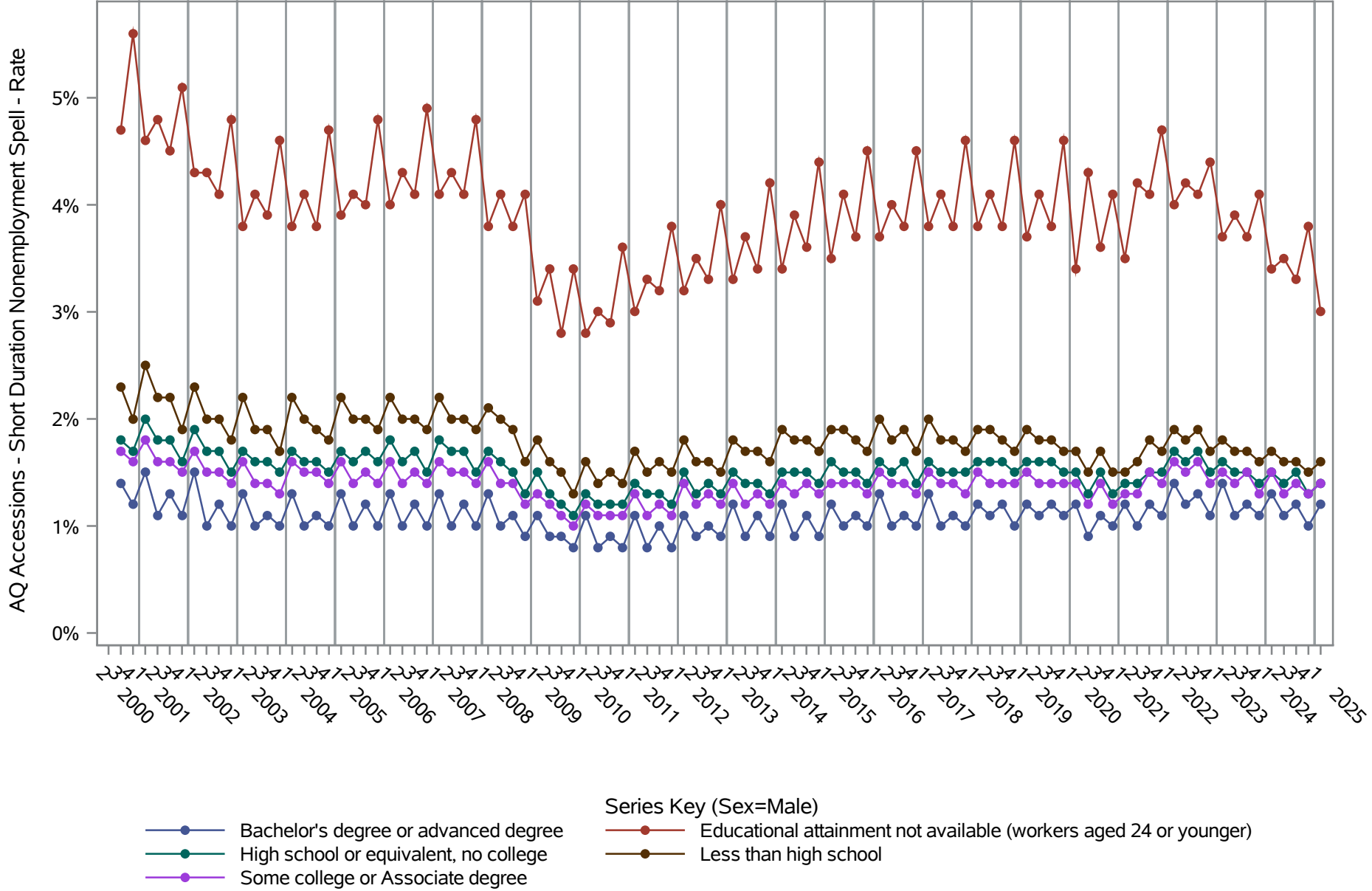
**National J2J Rates**  
**EE Accessions (Not Seasonally Adjusted)**  
*by Sex and Education (2 of 2) Sex=Female*



**Source: United States Census Bureau, Job-to-Job Flow Statistics, Release R2026Q1 (Beta)**

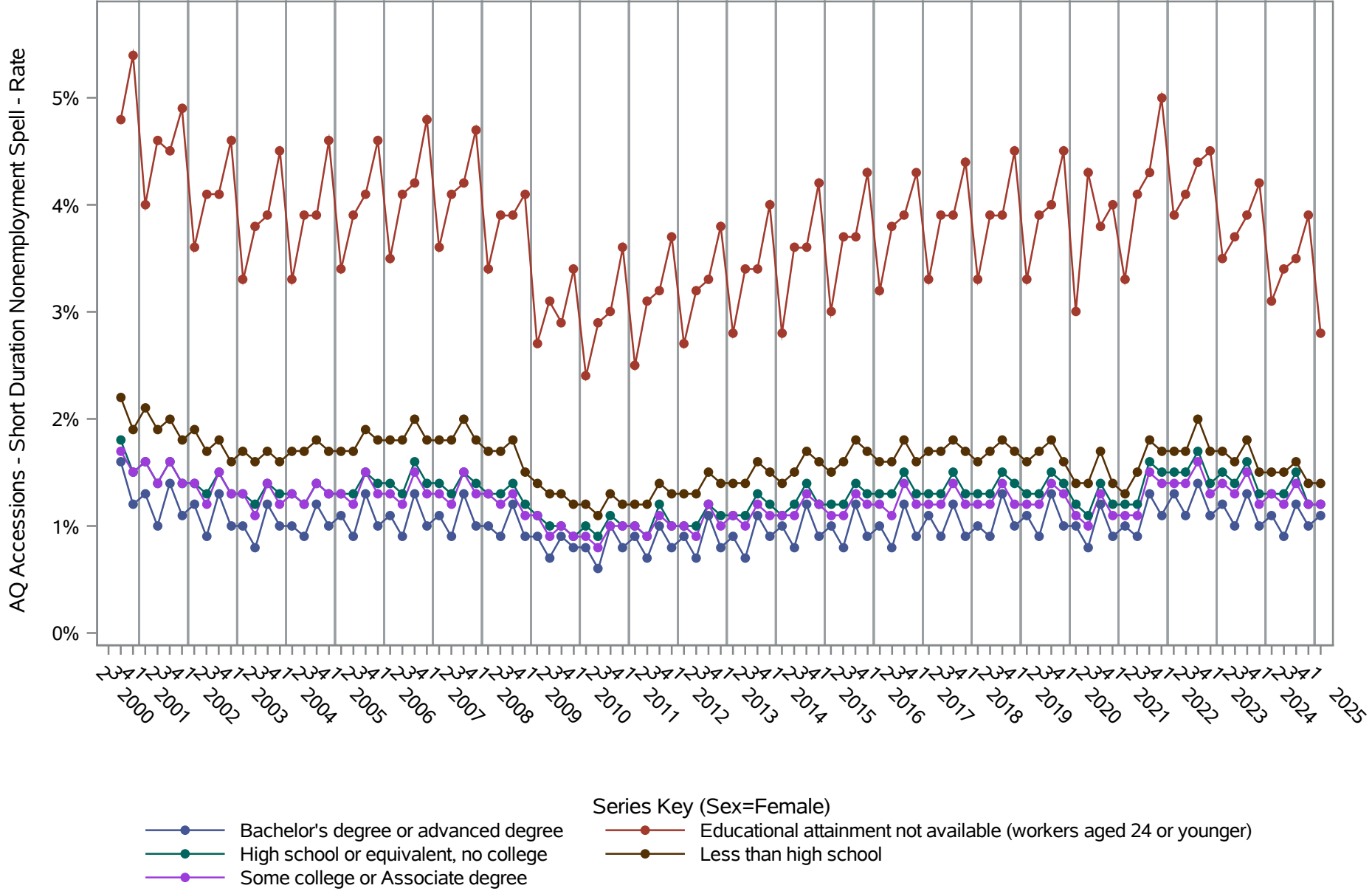
# National J2J Rates

## AQ Accessions - Short Duration Nonemployment Spell (Not Seasonally Adjusted) by Sex and Education (1 of 2) Sex=Male



Source: United States Census Bureau, Job-to-Job Flow Statistics, Release R2026Q1 (Beta)

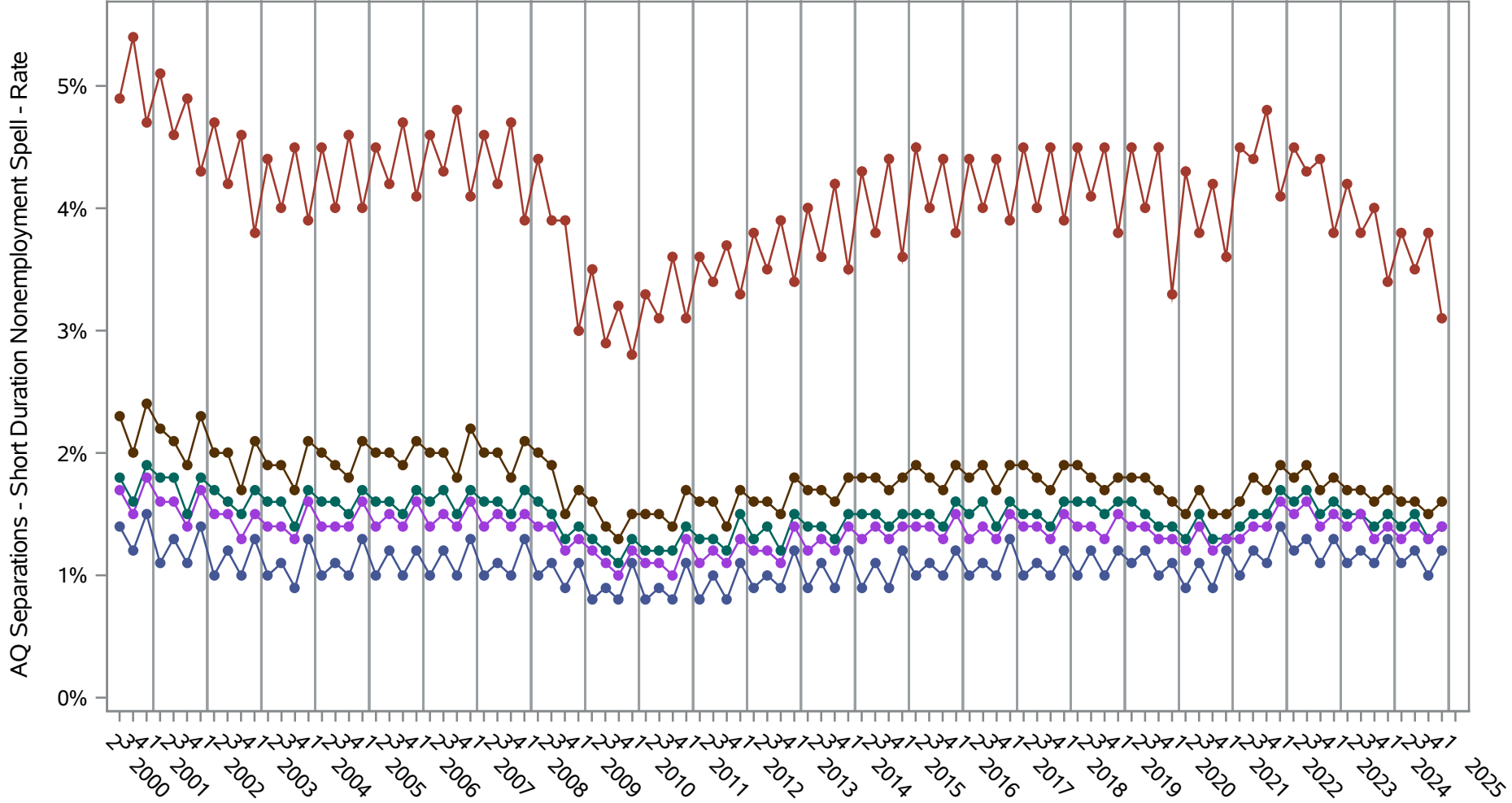
**National J2J Rates**  
**AQ Accessions - Short Duration Nonemployment Spell (Not Seasonally Adjusted)**  
*by Sex and Education (2 of 2) Sex=Female*



Source: United States Census Bureau, Job-to-Job Flow Statistics, Release R2026Q1 (Beta)

# National J2J Rates

## AQ Separations - Short Duration Nonemployment Spell (Not Seasonally Adjusted) by Sex and Education (1 of 2) Sex=Male



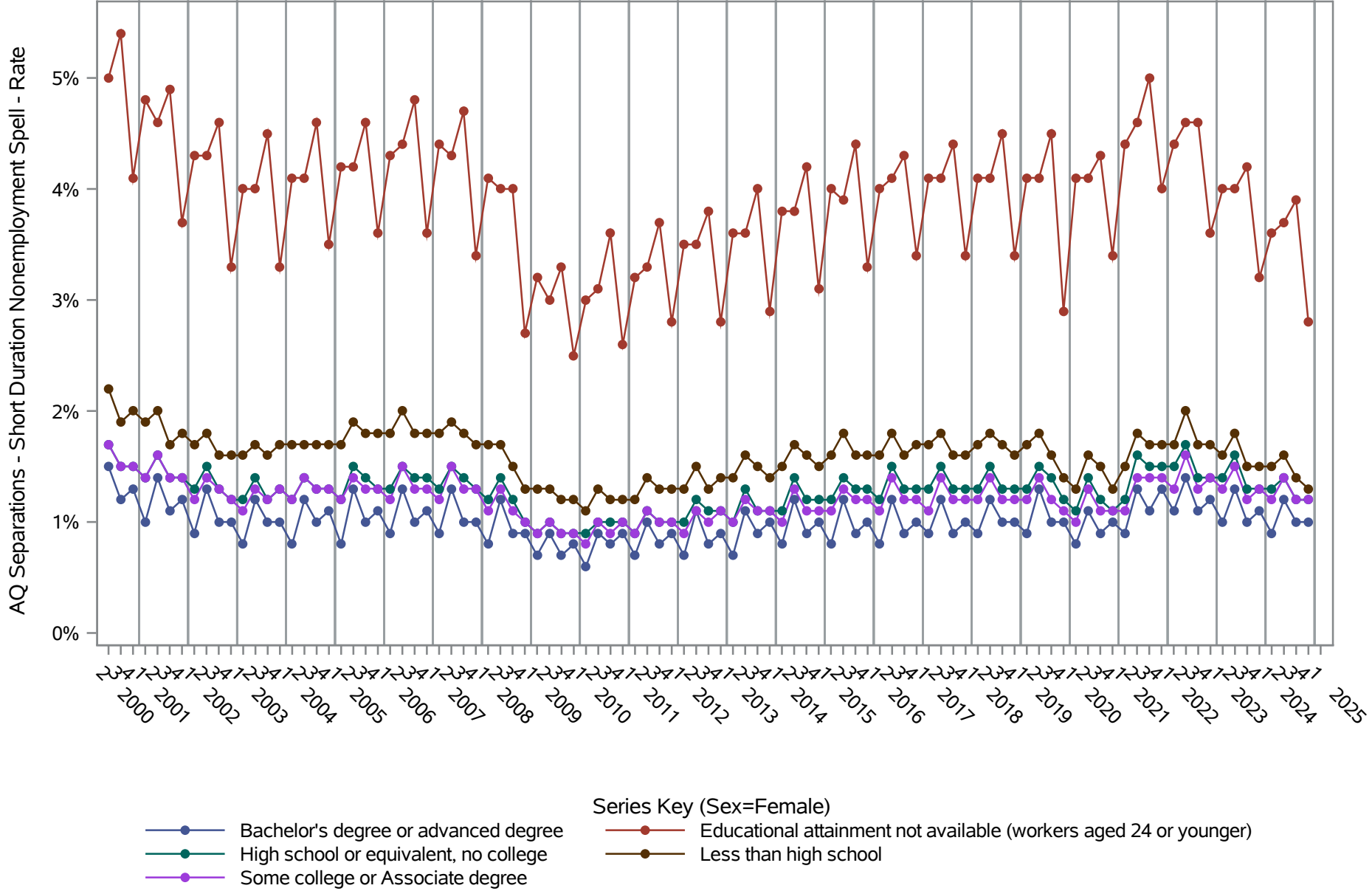
Series Key (Sex=Male)

- Bachelor's degree or advanced degree
- High school or equivalent, no college
- Some college or Associate degree
- Educational attainment not available (workers aged 24 or younger)
- Less than high school

Source: United States Census Bureau, Job-to-Job Flow Statistics, Release R2026Q1 (Beta)

# National J2J Rates

## AQ Separations - Short Duration Nonemployment Spell (Not Seasonally Adjusted) by Sex and Education (2 of 2) Sex=Female



Source: United States Census Bureau, Job-to-Job Flow Statistics, Release R2026Q1 (Beta)