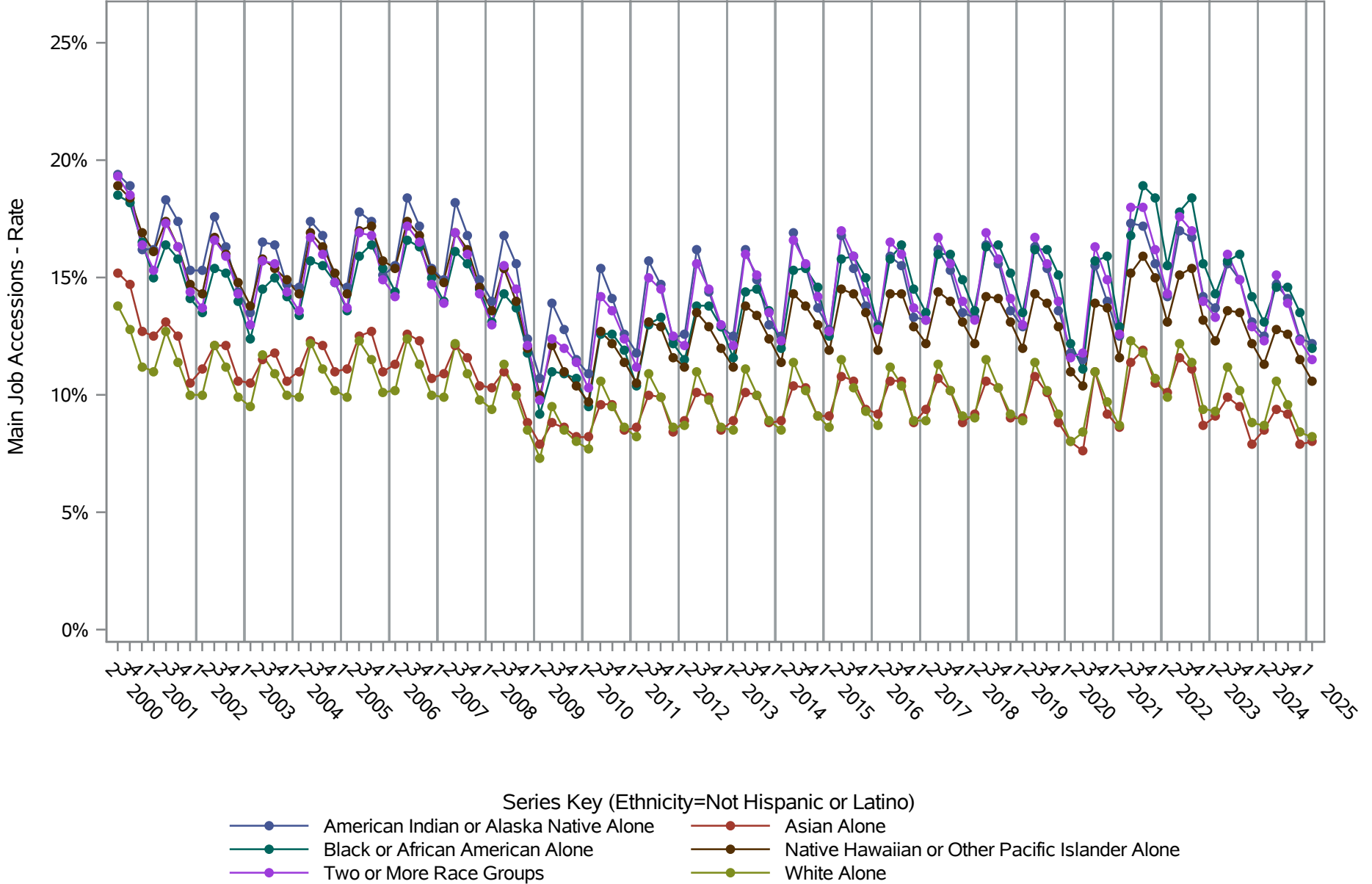
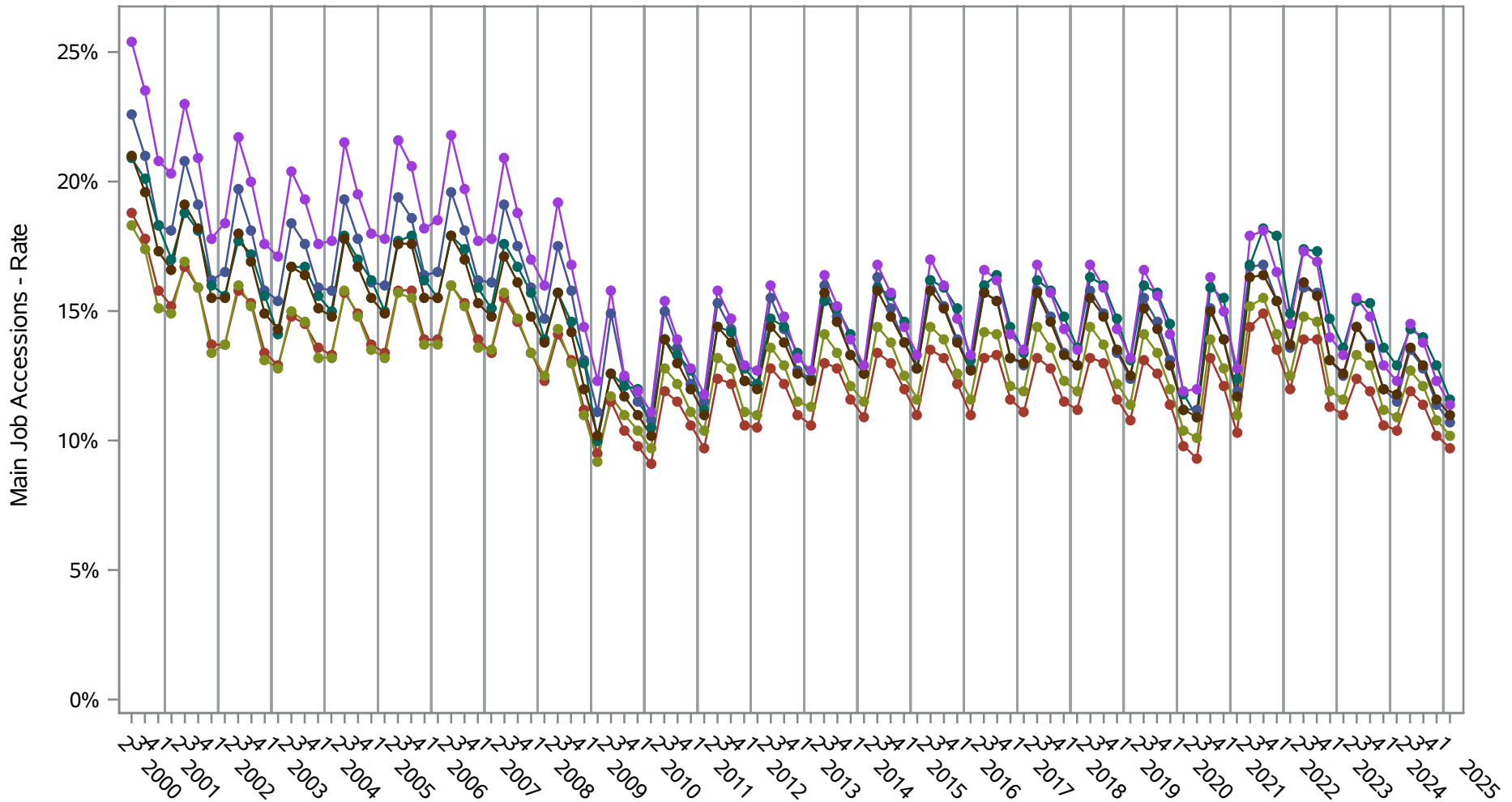


National J2J Rates
Main Job Accessions (Not Seasonally Adjusted)
by Race and Ethnicity (1 of 2) Ethnicity=Not Hispanic or Latino



Source: United States Census Bureau, Job-to-Job Flow Statistics, Release R2026Q1 (Beta)

National J2J Rates
Main Job Accessions (Not Seasonally Adjusted)
by Race and Ethnicity (2 of 2) Ethnicity=Hispanic or Latino



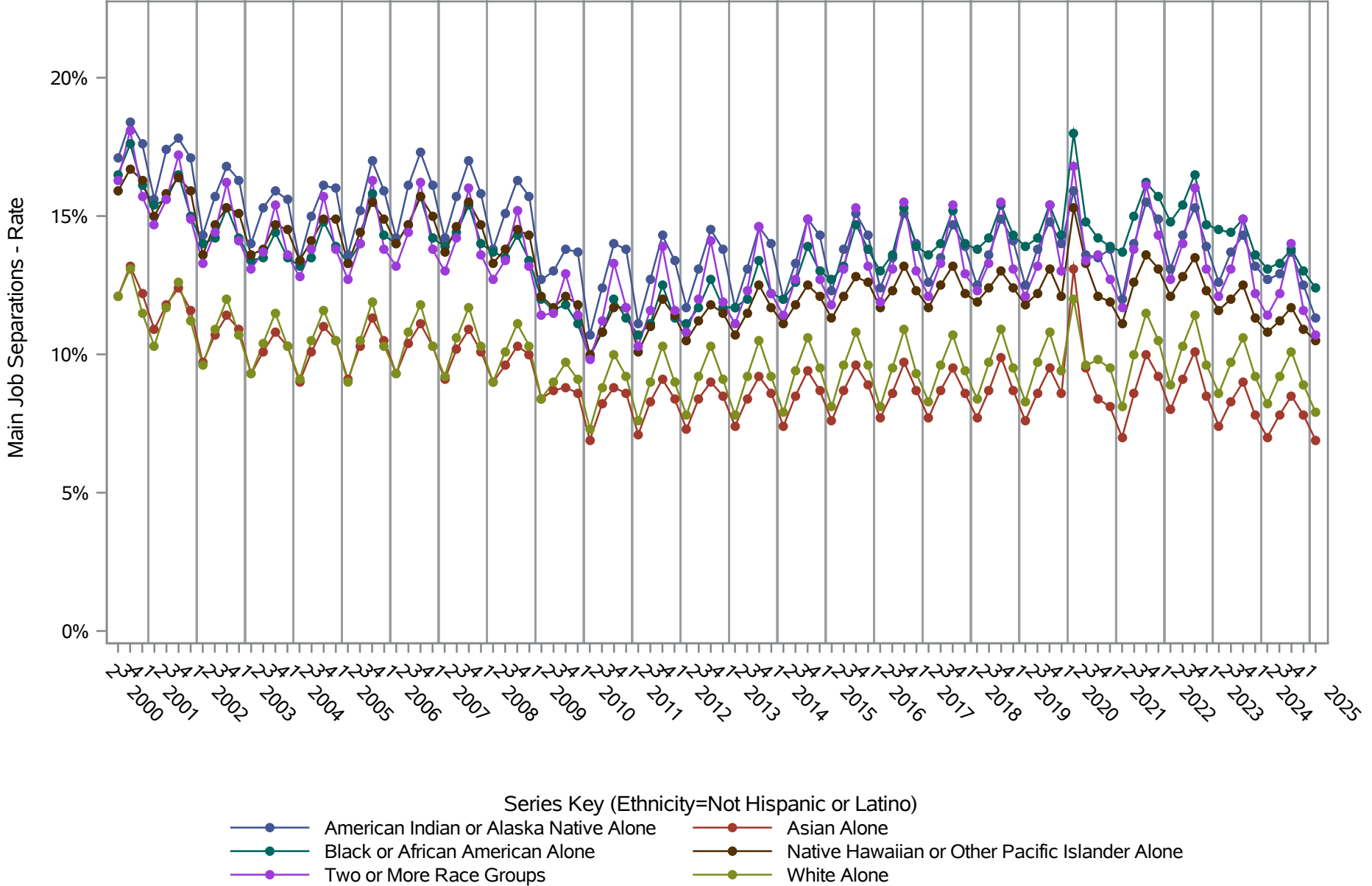
- Series Key (Ethnicity=Hispanic or Latino)
- American Indian or Alaska Native Alone
 - Asian Alone
 - Black or African American Alone
 - Native Hawaiian or Other Pacific Islander Alone
 - Two or More Race Groups
 - White Alone

Source: United States Census Bureau, Job-to-Job Flow Statistics, Release R2026Q1 (Beta)

National J2J Rates

Main Job Separations (Not Seasonally Adjusted)

by Race and Ethnicity (1 of 2) Ethnicity=Not Hispanic or Latino

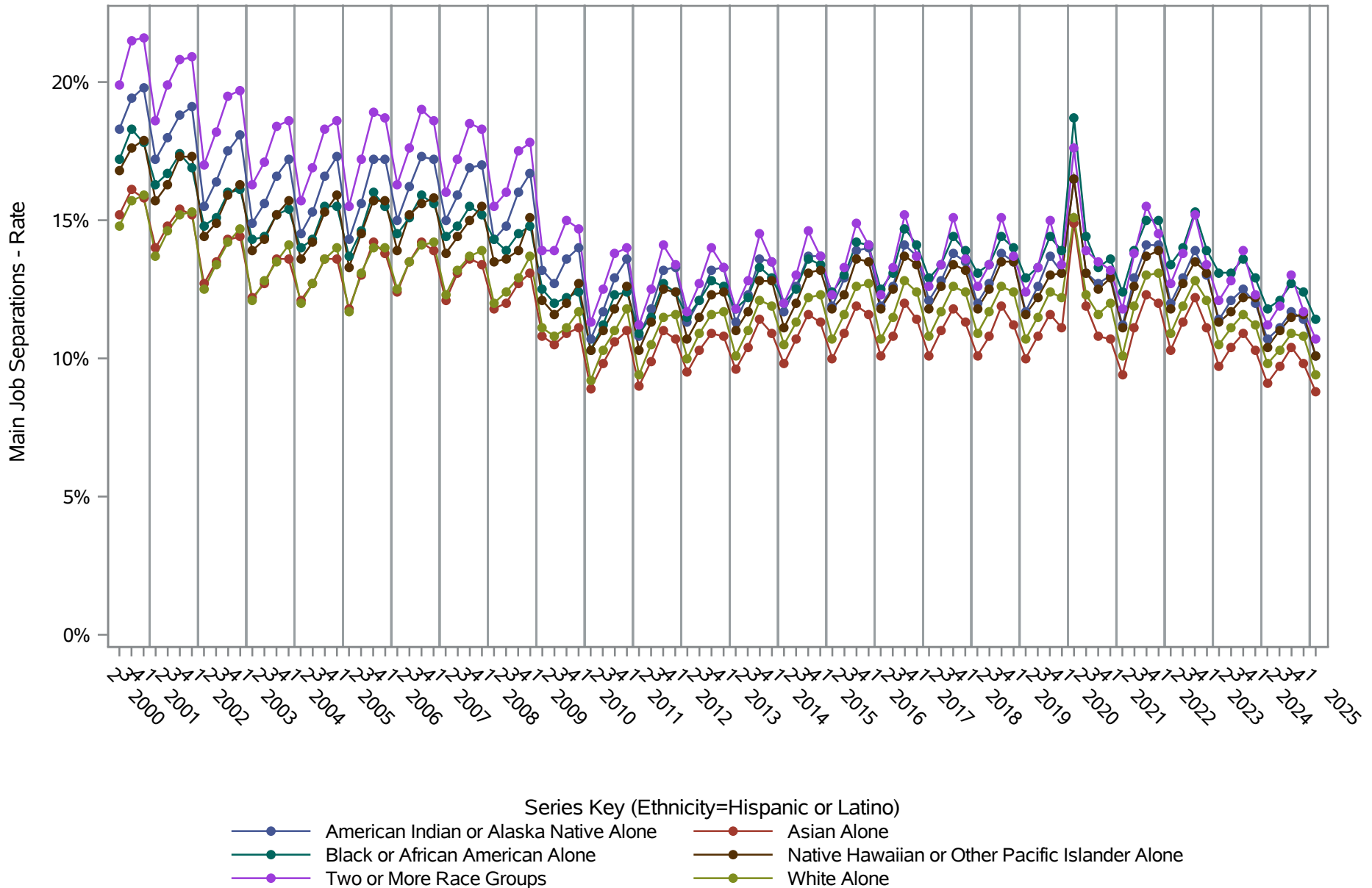


Source: United States Census Bureau, Job-to-Job Flow Statistics, Release R2026Q1 (Beta)

National J2J Rates

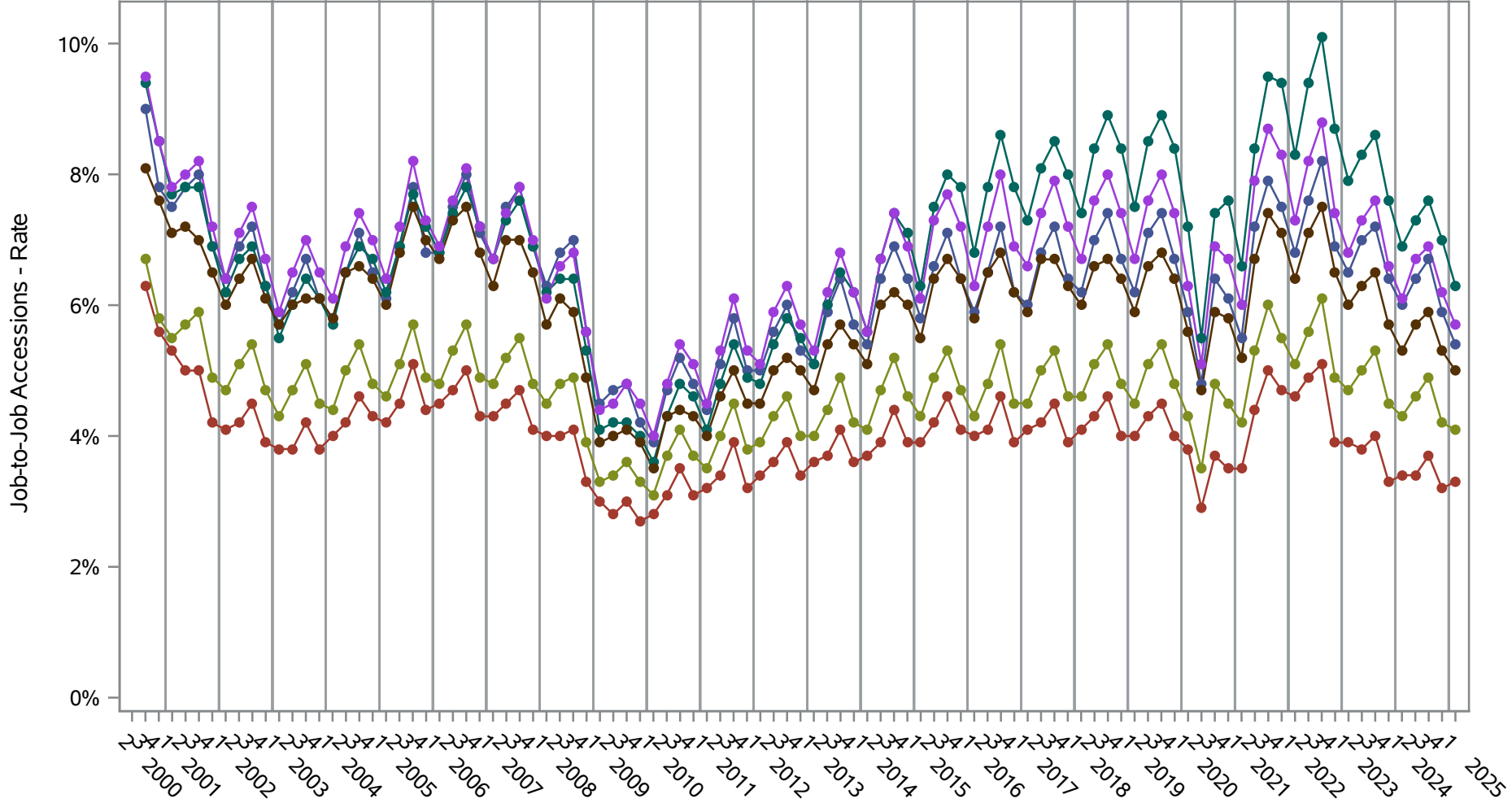
Main Job Separations (Not Seasonally Adjusted)

by Race and Ethnicity (2 of 2) Ethnicity=Hispanic or Latino



Source: United States Census Bureau, Job-to-Job Flow Statistics, Release R2026Q1 (Beta)

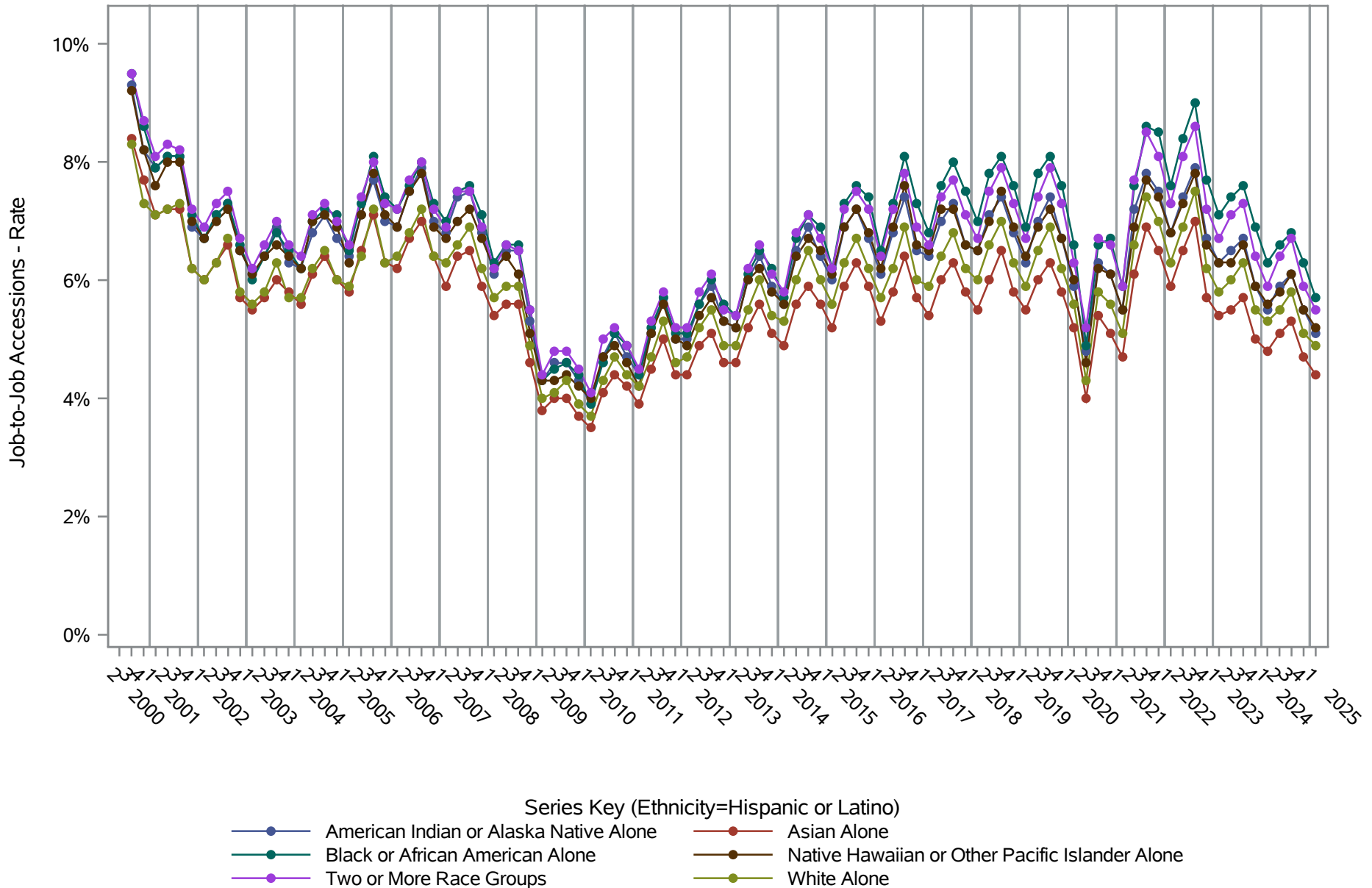
National J2J Rates
Job-to-Job Accessions (Not Seasonally Adjusted)
by Race and Ethnicity (1 of 2) Ethnicity=Not Hispanic or Latino



- Series Key (Ethnicity=Not Hispanic or Latino)
- American Indian or Alaska Native Alone
 - Black or African American Alone
 - Two or More Race Groups
 - Asian Alone
 - Native Hawaiian or Other Pacific Islander Alone
 - White Alone

Source: United States Census Bureau, Job-to-Job Flow Statistics, Release R2026Q1 (Beta)

National J2J Rates
Job-to-Job Accessions (Not Seasonally Adjusted)
by Race and Ethnicity (2 of 2) Ethnicity=Hispanic or Latino

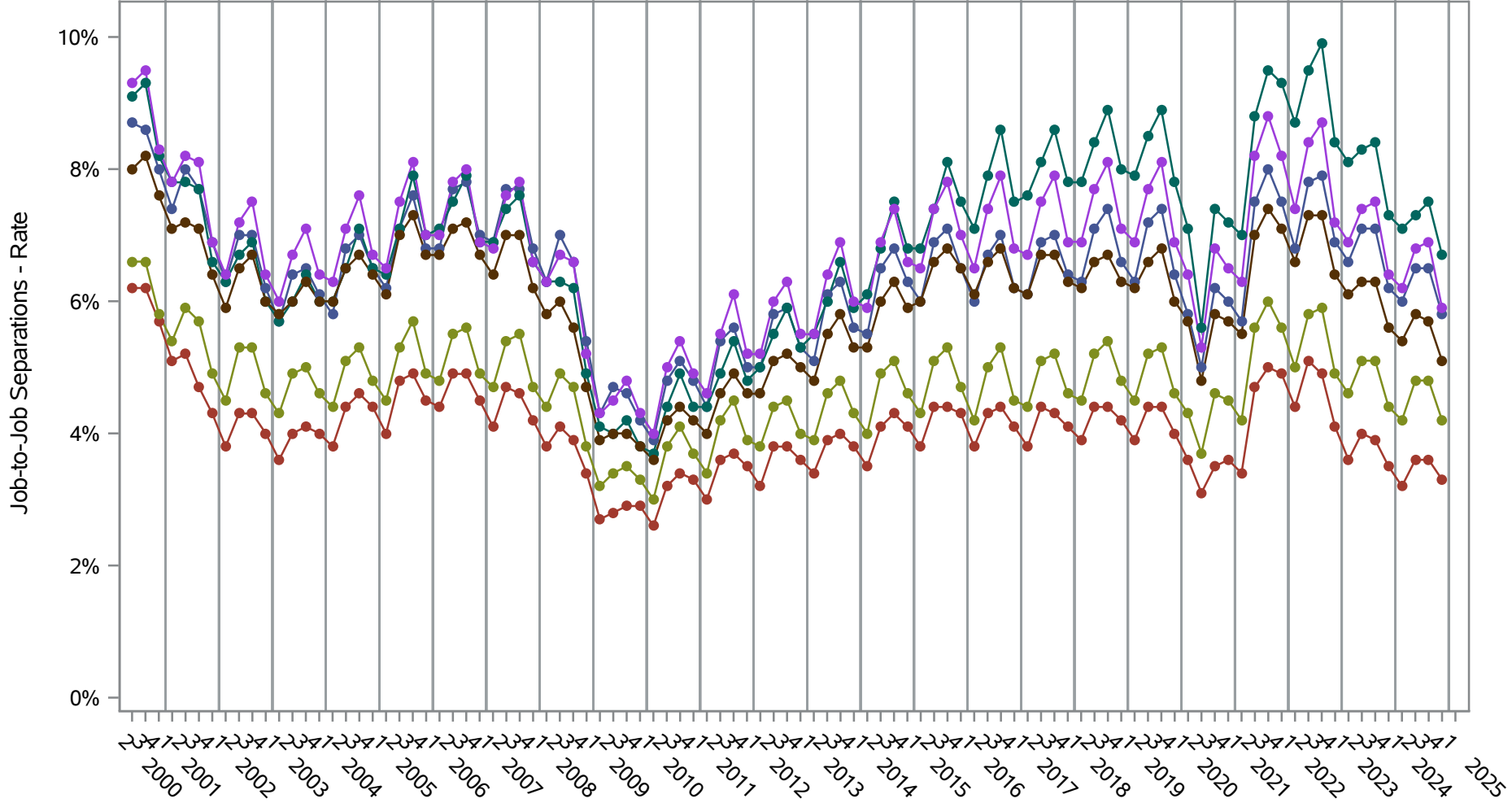


Source: United States Census Bureau, Job-to-Job Flow Statistics, Release R2026Q1 (Beta)

National J2J Rates

Job-to-Job Separations (Not Seasonally Adjusted)

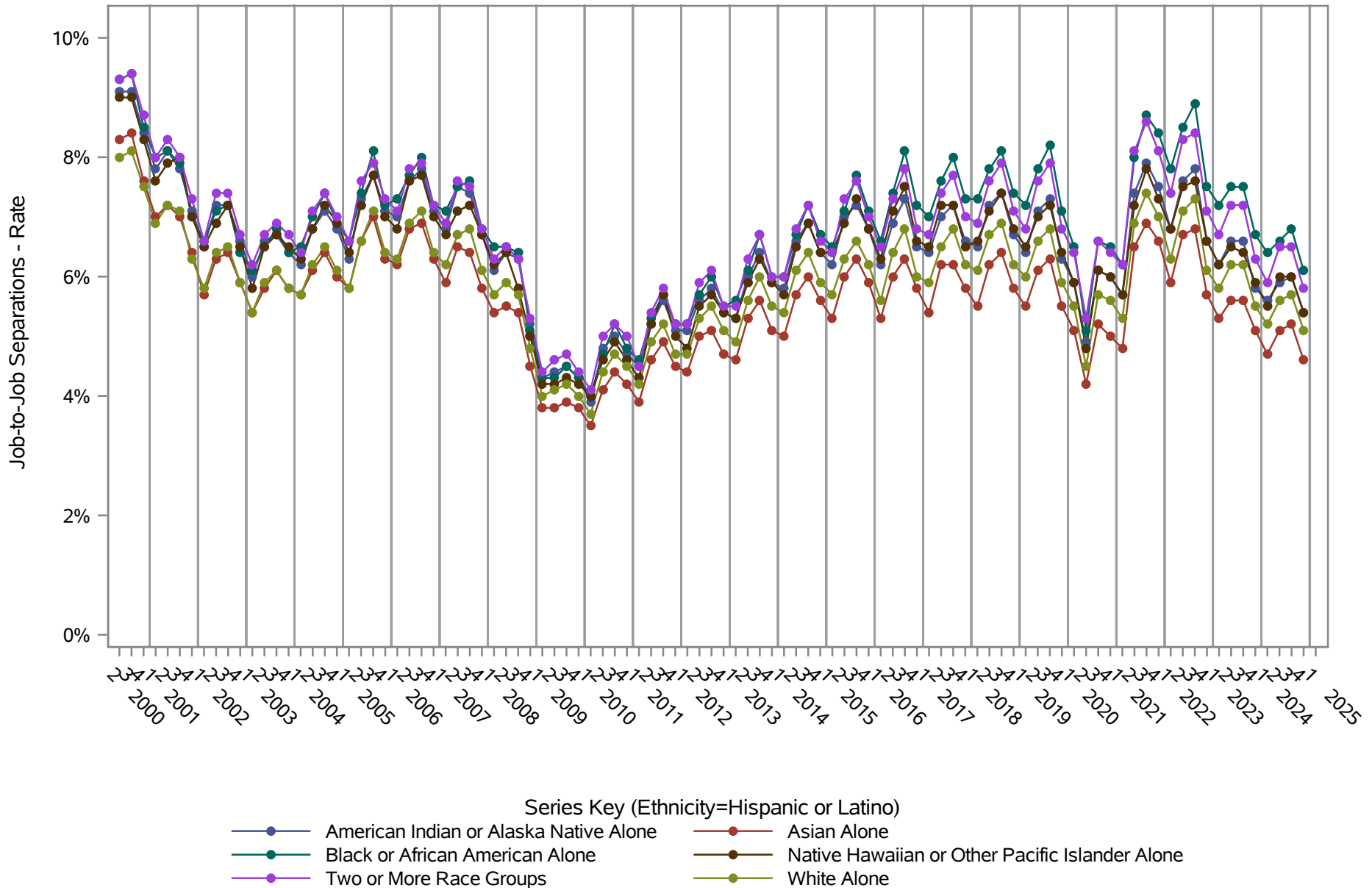
by Race and Ethnicity (1 of 2) Ethnicity=Not Hispanic or Latino



- Series Key (Ethnicity=Not Hispanic or Latino)
- American Indian or Alaska Native Alone
 - Asian Alone
 - Black or African American Alone
 - Native Hawaiian or Other Pacific Islander Alone
 - Two or More Race Groups
 - White Alone

Source: United States Census Bureau, Job-to-Job Flow Statistics, Release R2026Q1 (Beta)

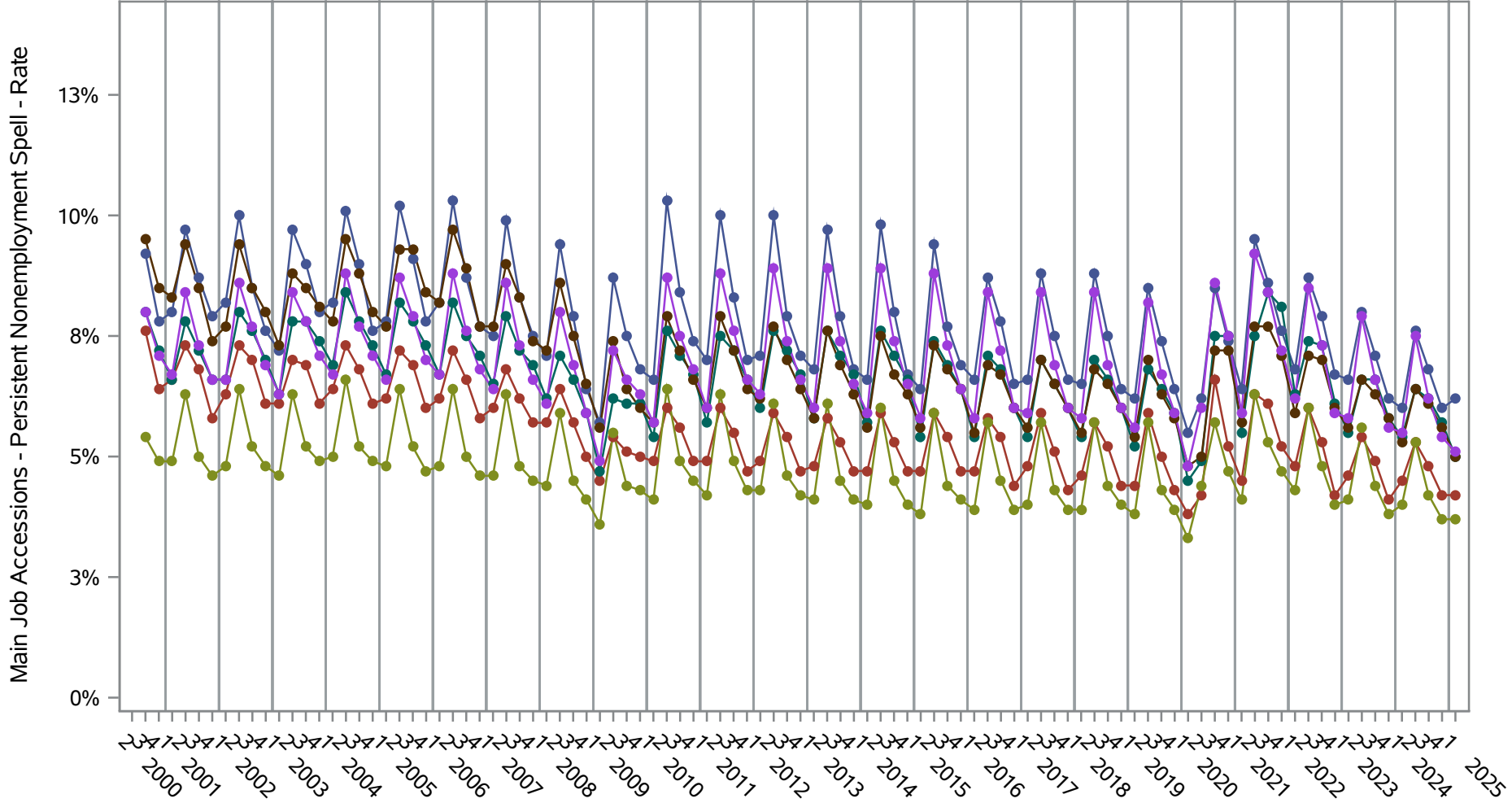
National J2J Rates
Job-to-Job Separations (Not Seasonally Adjusted)
by Race and Ethnicity (2 of 2) Ethnicity=Hispanic or Latino



Source: United States Census Bureau, Job-to-Job Flow Statistics, Release R2026Q1 (Beta)

National J2J Rates

Main Job Accessions - Persistent Nonemployment Spell (Not Seasonally Adjusted) by Race and Ethnicity (1 of 2) Ethnicity=Not Hispanic or Latino

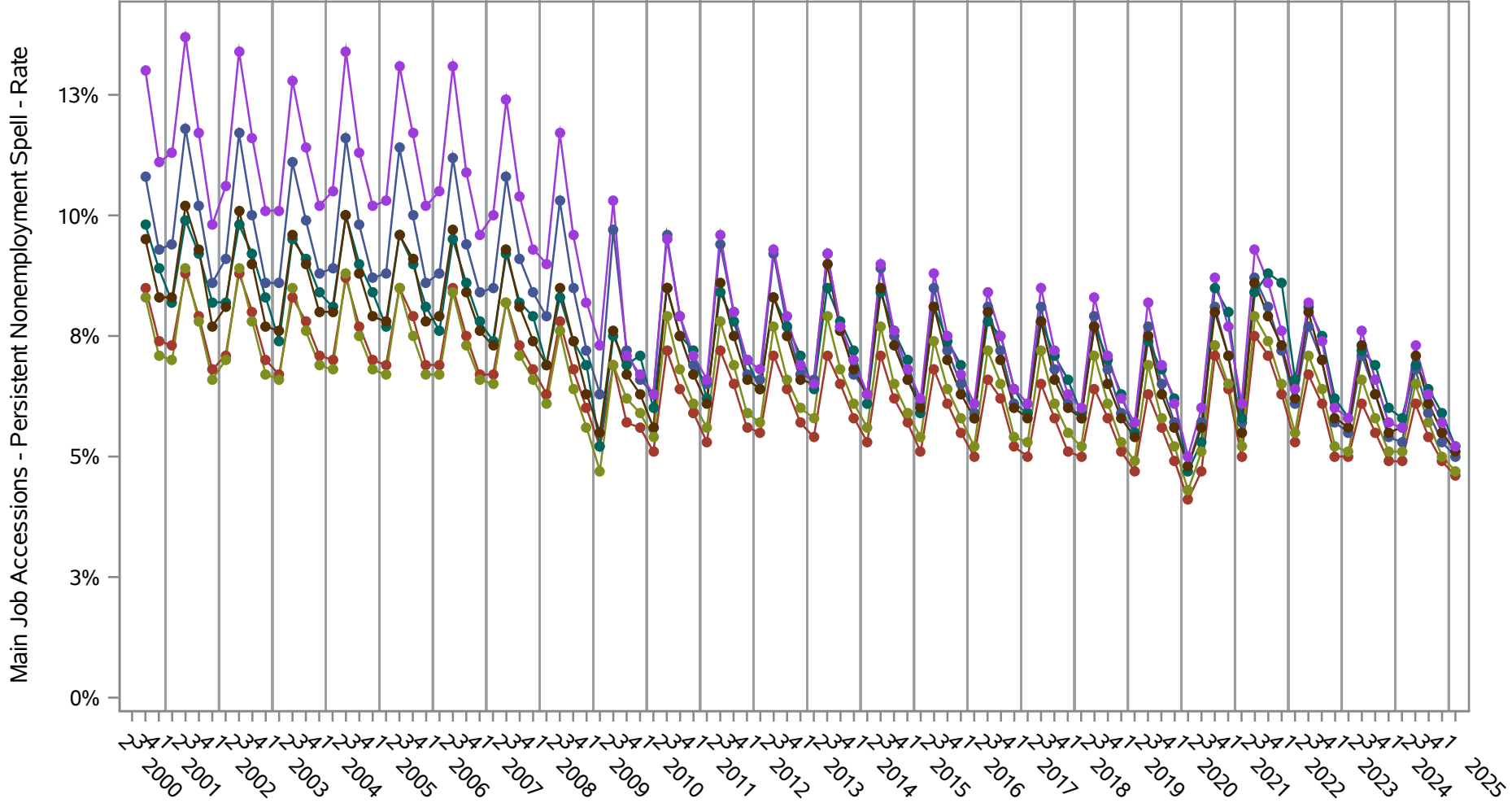


- Series Key (Ethnicity=Not Hispanic or Latino)
- American Indian or Alaska Native Alone
 - Asian Alone
 - Black or African American Alone
 - Native Hawaiian or Other Pacific Islander Alone
 - Two or More Race Groups
 - White Alone

Source: United States Census Bureau, Job-to-Job Flow Statistics, Release R2026Q1 (Beta)

National J2J Rates

Main Job Accessions - Persistent Nonemployment Spell (Not Seasonally Adjusted) by Race and Ethnicity (2 of 2) Ethnicity=Hispanic or Latino

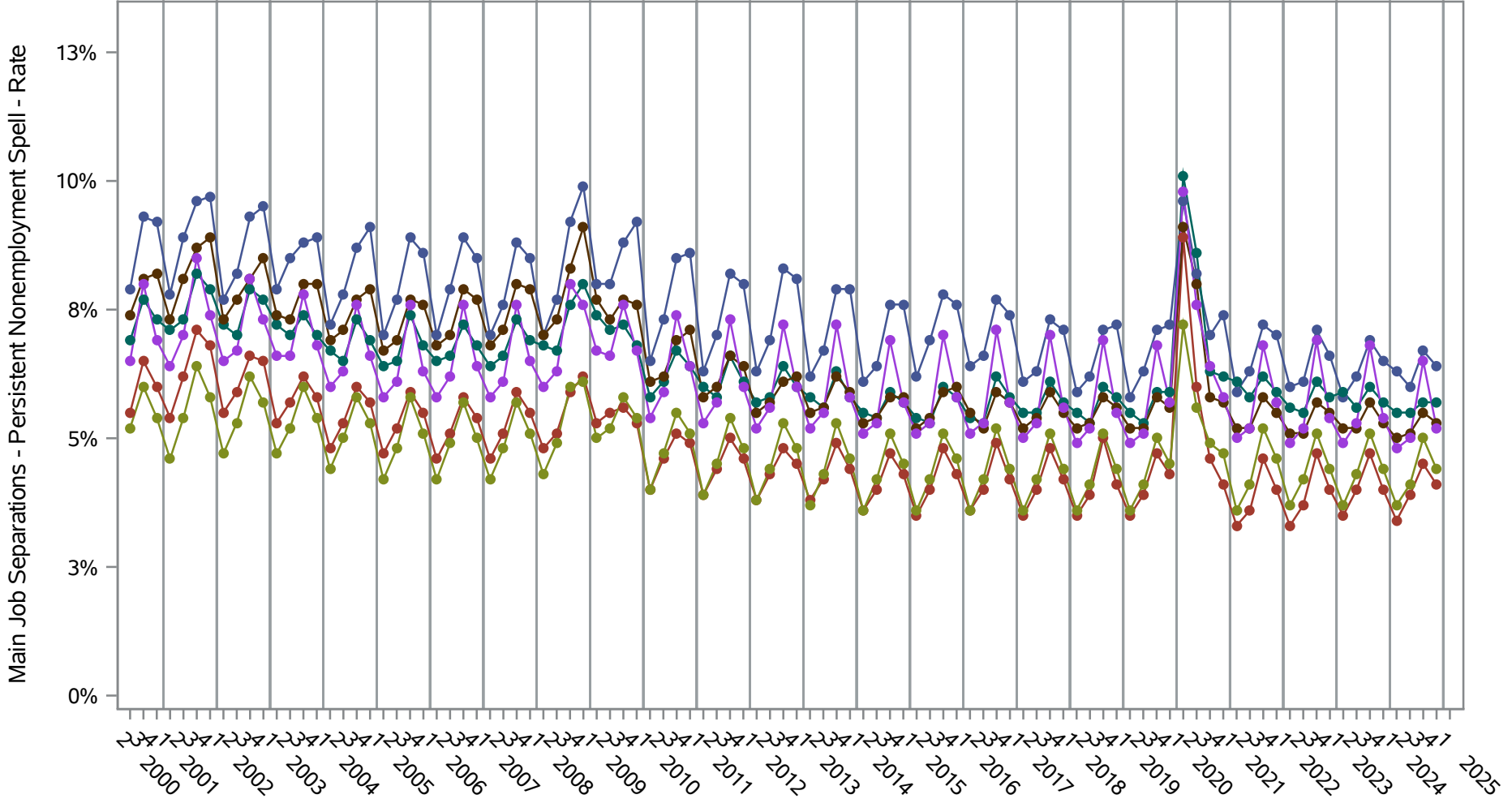


- Series Key (Ethnicity=Hispanic or Latino)
- American Indian or Alaska Native Alone
 - Asian Alone
 - Black or African American Alone
 - Native Hawaiian or Other Pacific Islander Alone
 - Two or More Race Groups
 - White Alone

Source: United States Census Bureau, Job-to-Job Flow Statistics, Release R2026Q1 (Beta)

National J2J Rates

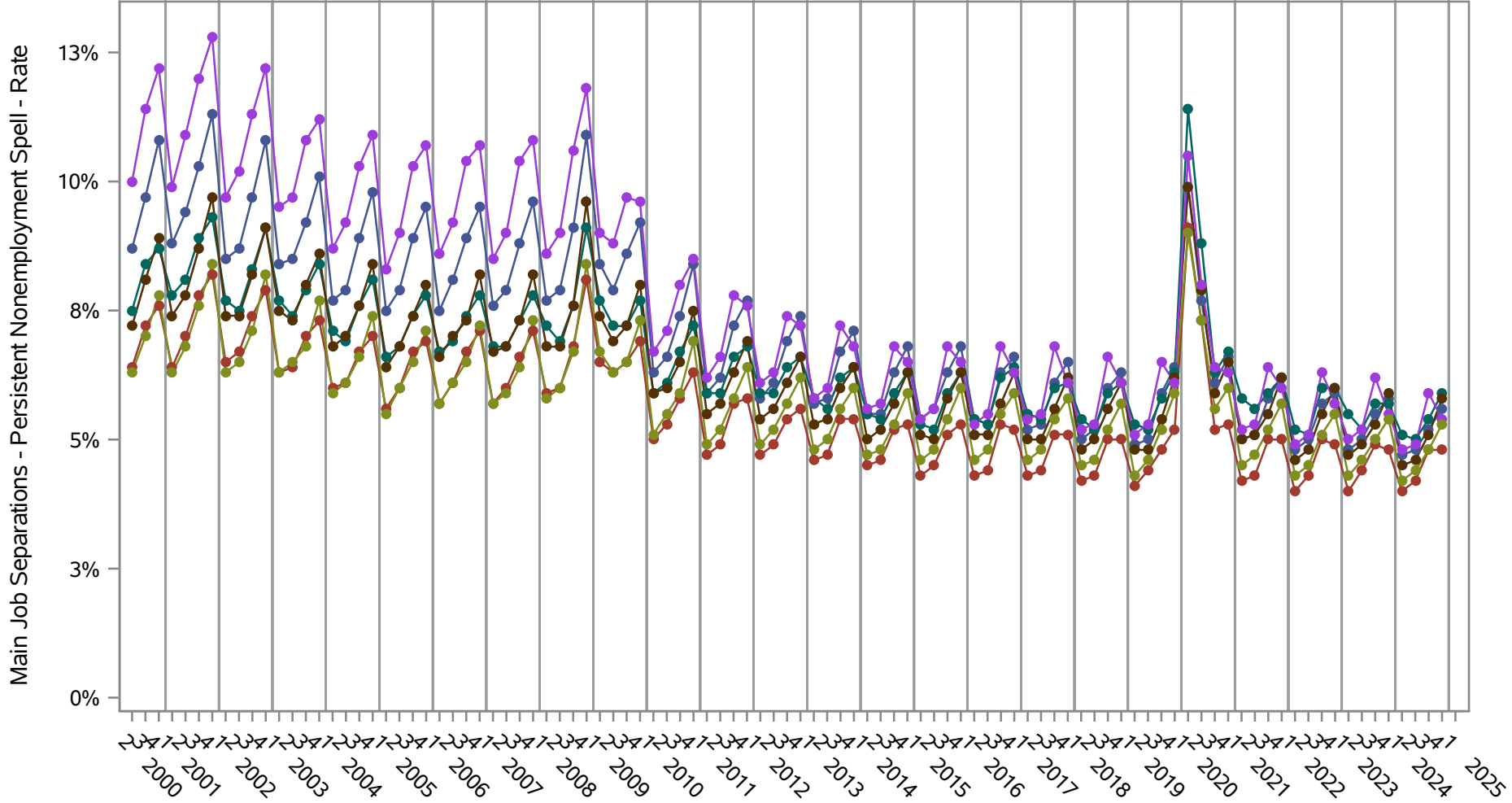
Main Job Separations - Persistent Nonemployment Spell (Not Seasonally Adjusted) by Race and Ethnicity (1 of 2) Ethnicity=Not Hispanic or Latino



- Series Key (Ethnicity=Not Hispanic or Latino)
- American Indian or Alaska Native Alone
 - Asian Alone
 - Black or African American Alone
 - Native Hawaiian or Other Pacific Islander Alone
 - Two or More Race Groups
 - White Alone

Source: United States Census Bureau, Job-to-Job Flow Statistics, Release R2026Q1 (Beta)

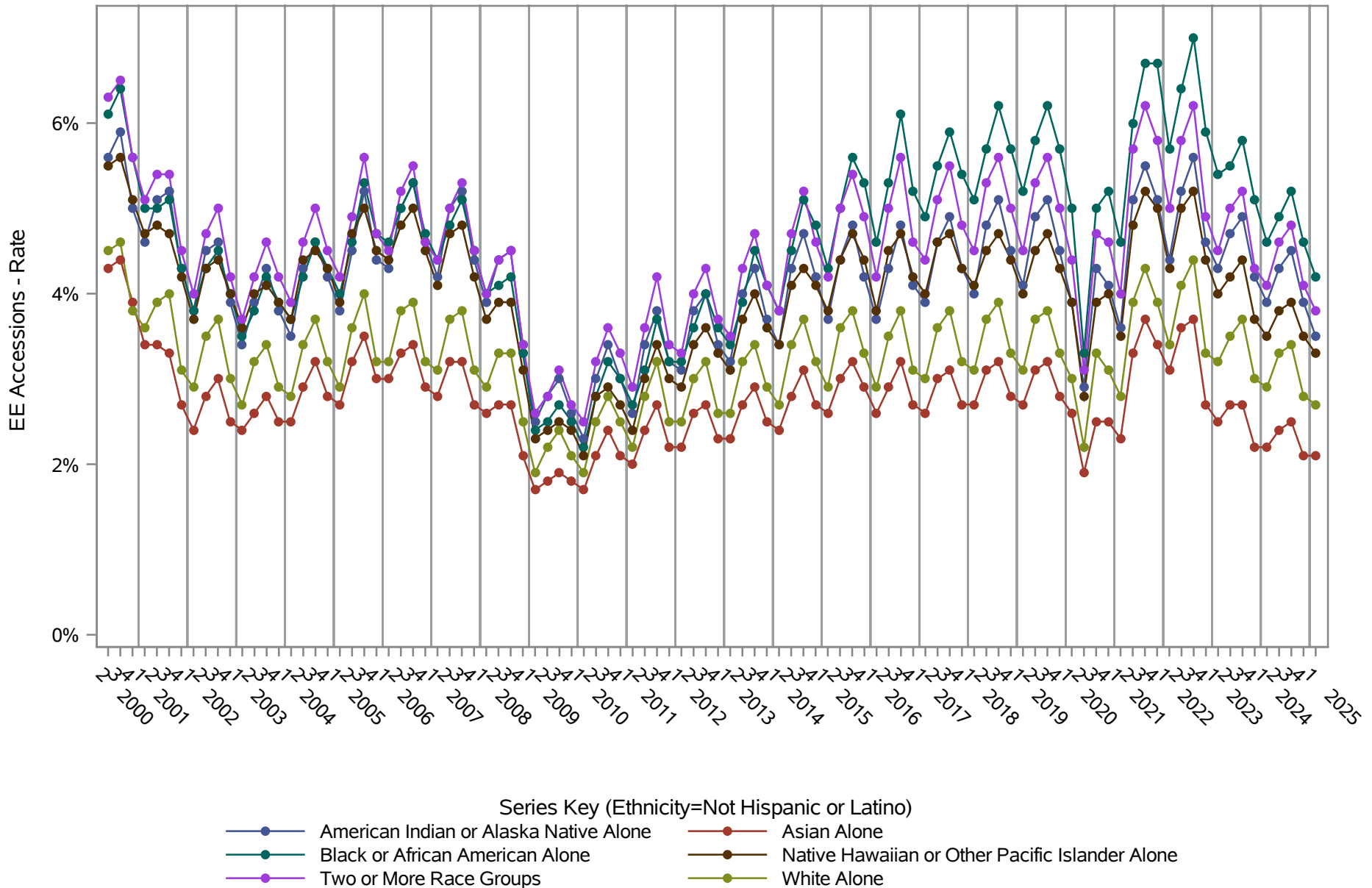
National J2J Rates
Main Job Separations - Persistent Nonemployment Spell (Not Seasonally Adjusted)
by Race and Ethnicity (2 of 2) Ethnicity=Hispanic or Latino



- Series Key (Ethnicity=Hispanic or Latino)
- American Indian or Alaska Native Alone
 - Asian Alone
 - Black or African American Alone
 - Native Hawaiian or Other Pacific Islander Alone
 - Two or More Race Groups
 - White Alone

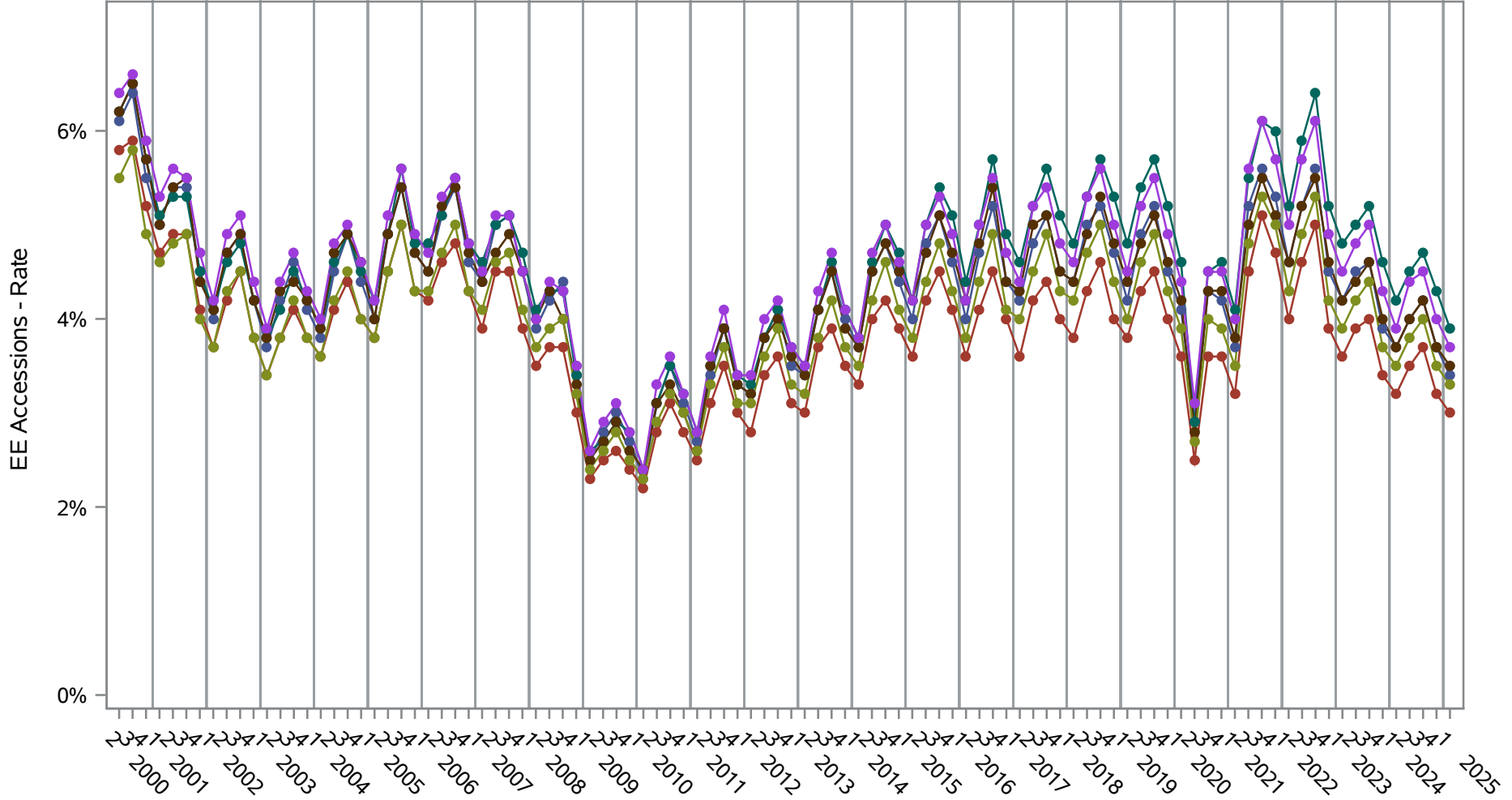
Source: United States Census Bureau, Job-to-Job Flow Statistics, Release R2026Q1 (Beta)

National J2J Rates
EE Accessions (Not Seasonally Adjusted)
by Race and Ethnicity (1 of 2) Ethnicity=Not Hispanic or Latino



Source: United States Census Bureau, Job-to-Job Flow Statistics, Release R2026Q1 (Beta)

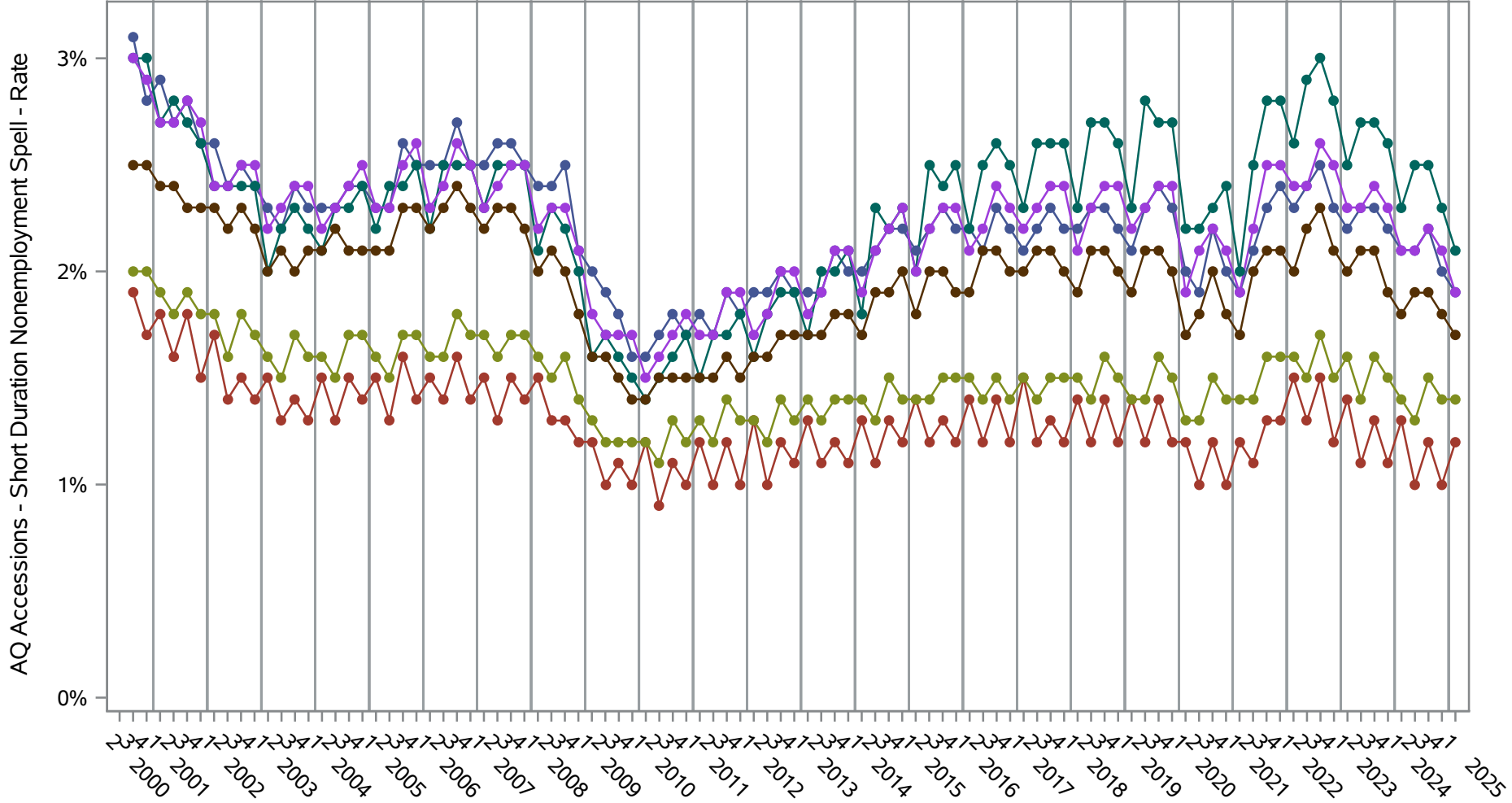
National J2J Rates
EE Accessions (Not Seasonally Adjusted)
by Race and Ethnicity (2 of 2) Ethnicity=Hispanic or Latino



- Series Key (Ethnicity=Hispanic or Latino)
- American Indian or Alaska Native Alone
 - Black or African American Alone
 - Two or More Race Groups
 - Asian Alone
 - Native Hawaiian or Other Pacific Islander Alone
 - White Alone

Source: United States Census Bureau, Job-to-Job Flow Statistics, Release R2026Q1 (Beta)

National J2J Rates
AQ Accessions - Short Duration Nonemployment Spell (Not Seasonally Adjusted)
by Race and Ethnicity (1 of 2) Ethnicity=Not Hispanic or Latino

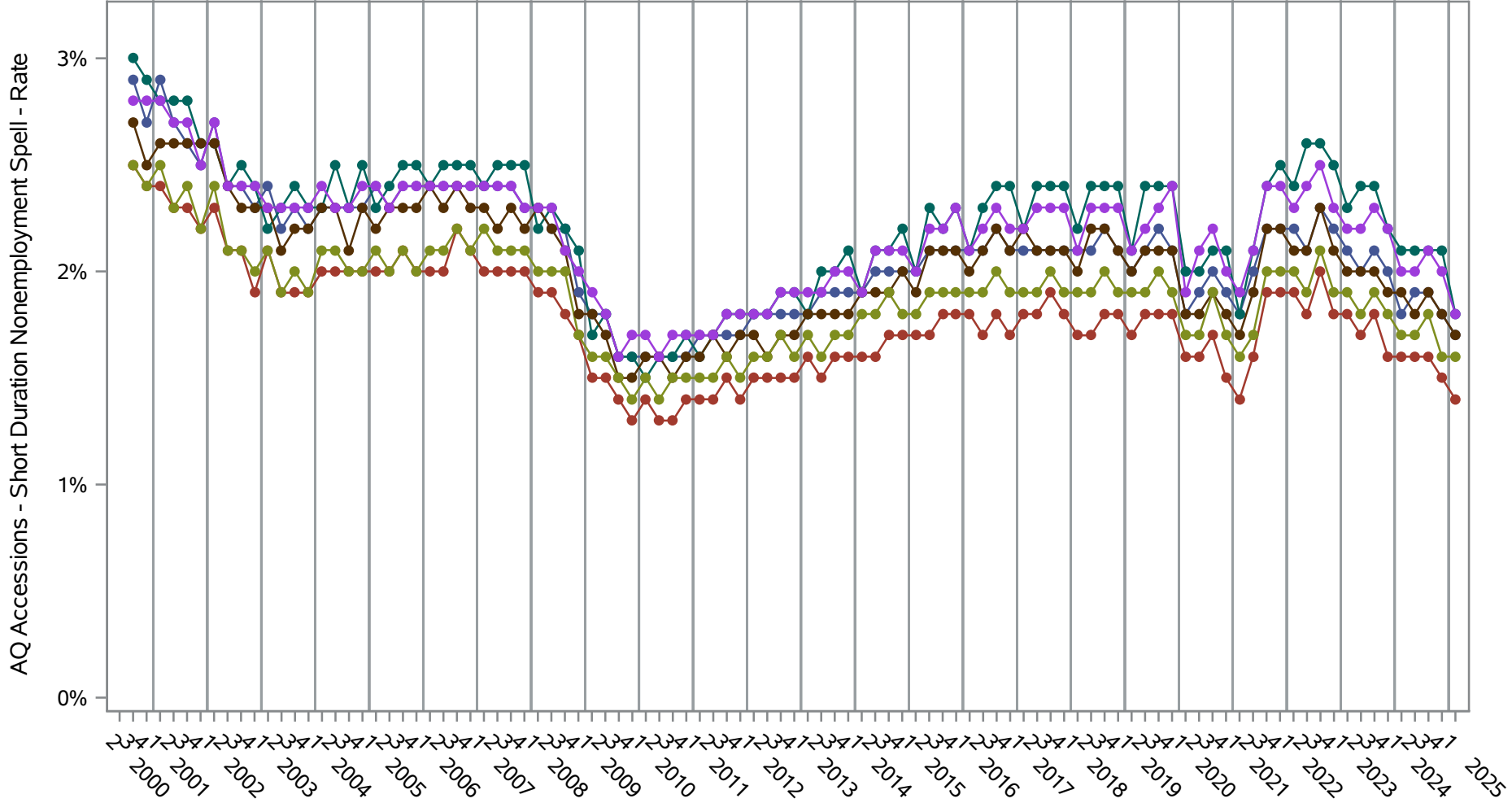


- Series Key (Ethnicity=Not Hispanic or Latino)
- American Indian or Alaska Native Alone
 - Asian Alone
 - Black or African American Alone
 - Native Hawaiian or Other Pacific Islander Alone
 - Two or More Race Groups
 - White Alone

Source: United States Census Bureau, Job-to-Job Flow Statistics, Release R2026Q1 (Beta)

National J2J Rates

AQ Accessions - Short Duration Nonemployment Spell (Not Seasonally Adjusted) by Race and Ethnicity (2 of 2) Ethnicity=Hispanic or Latino

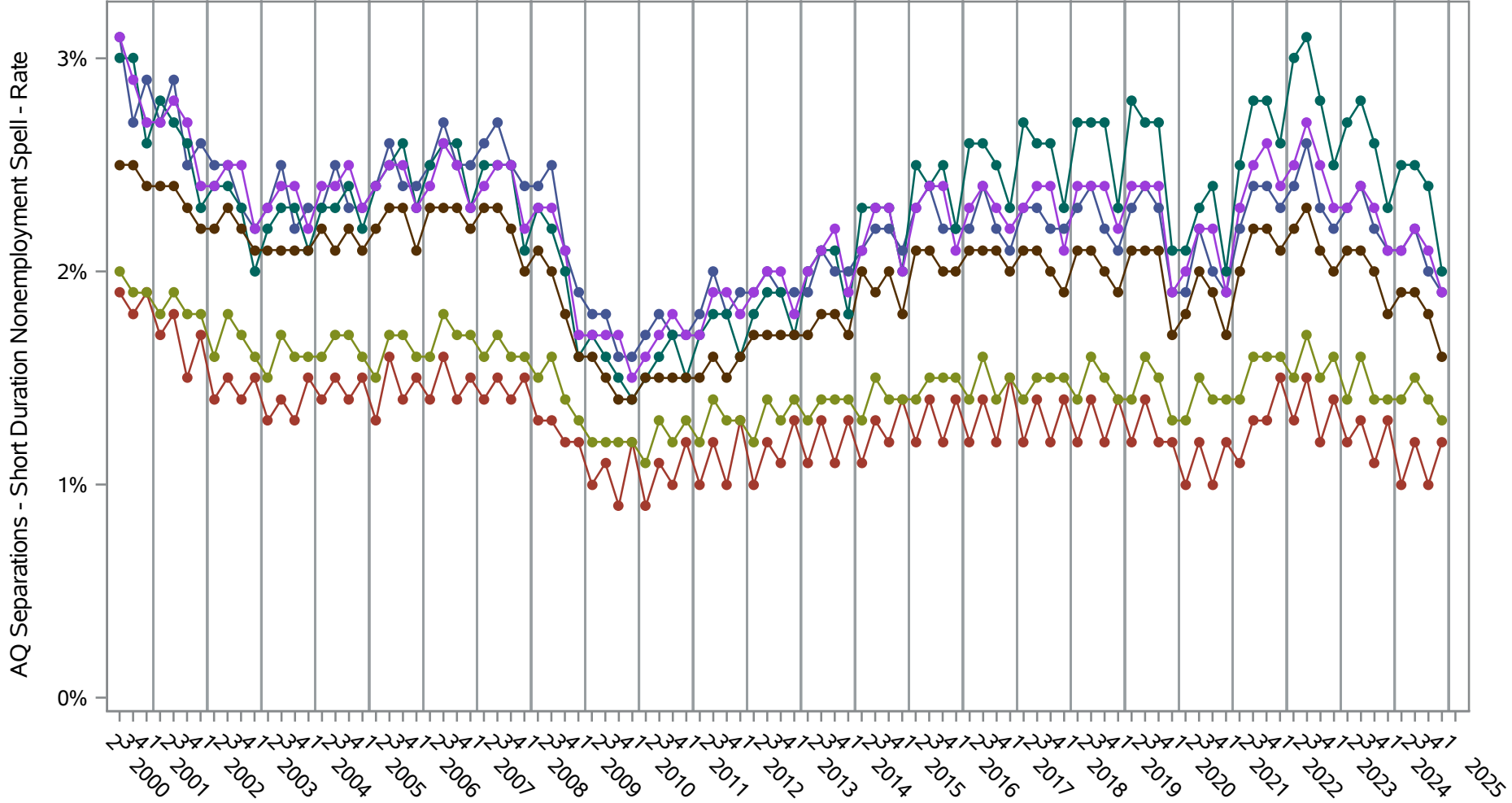


- Series Key (Ethnicity=Hispanic or Latino)
- American Indian or Alaska Native Alone
 - Asian Alone
 - Black or African American Alone
 - Native Hawaiian or Other Pacific Islander Alone
 - Two or More Race Groups
 - White Alone

Source: United States Census Bureau, Job-to-Job Flow Statistics, Release R2026Q1 (Beta)

National J2J Rates

AQ Separations - Short Duration Nonemployment Spell (Not Seasonally Adjusted) by Race and Ethnicity (1 of 2) Ethnicity=Not Hispanic or Latino

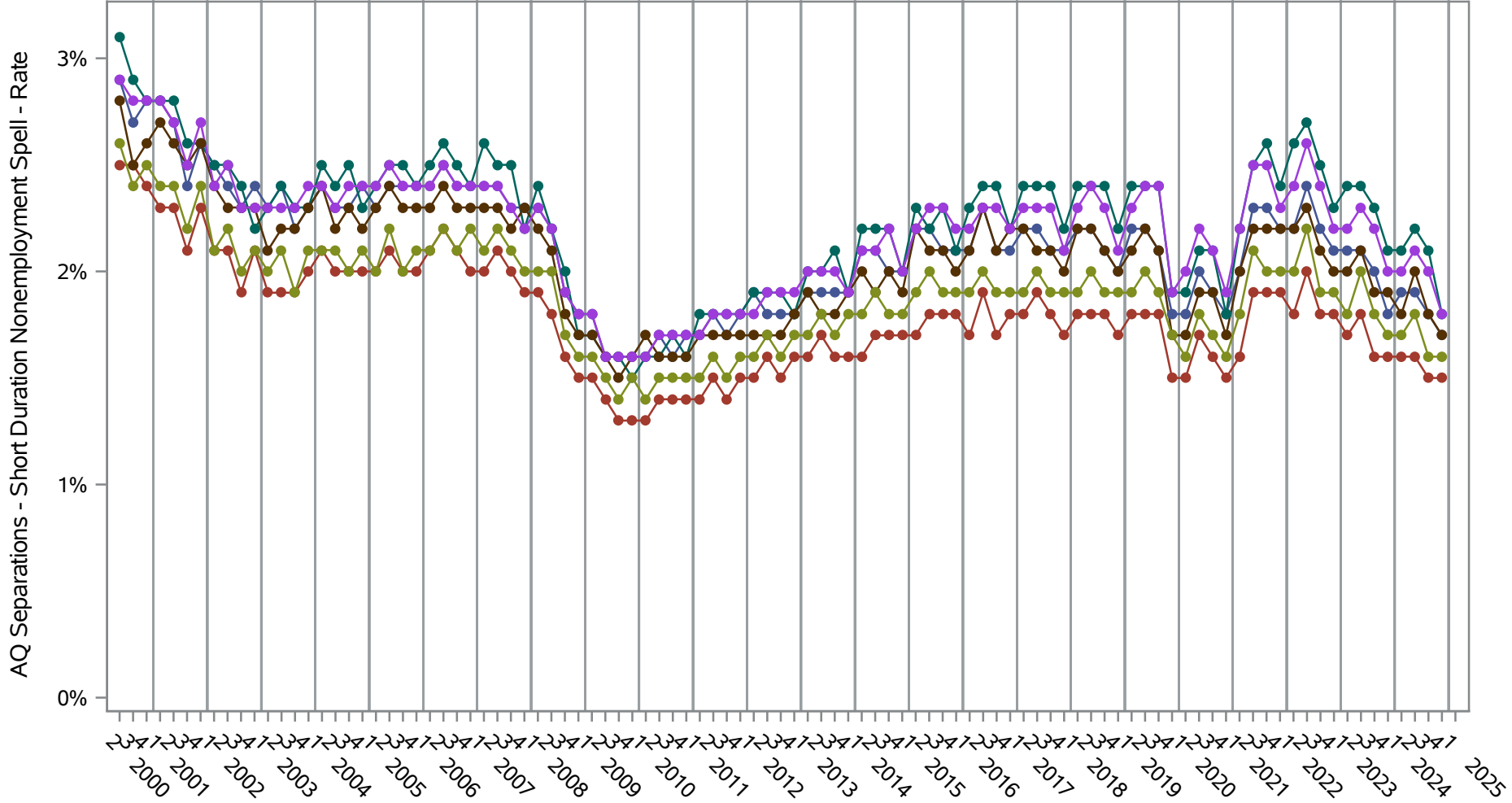


- Series Key (Ethnicity=Not Hispanic or Latino)
- American Indian or Alaska Native Alone
 - Asian Alone
 - Black or African American Alone
 - Native Hawaiian or Other Pacific Islander Alone
 - Two or More Race Groups
 - White Alone

Source: United States Census Bureau, Job-to-Job Flow Statistics, Release R2026Q1 (Beta)

National J2J Rates

AQ Separations - Short Duration Nonemployment Spell (Not Seasonally Adjusted) by Race and Ethnicity (2 of 2) Ethnicity=Hispanic or Latino



- Series Key (Ethnicity=Hispanic or Latino)
- American Indian or Alaska Native Alone
 - Asian Alone
 - Black or African American Alone
 - Native Hawaiian or Other Pacific Islander Alone
 - Two or More Race Groups
 - White Alone

Source: United States Census Bureau, Job-to-Job Flow Statistics, Release R2026Q1 (Beta)