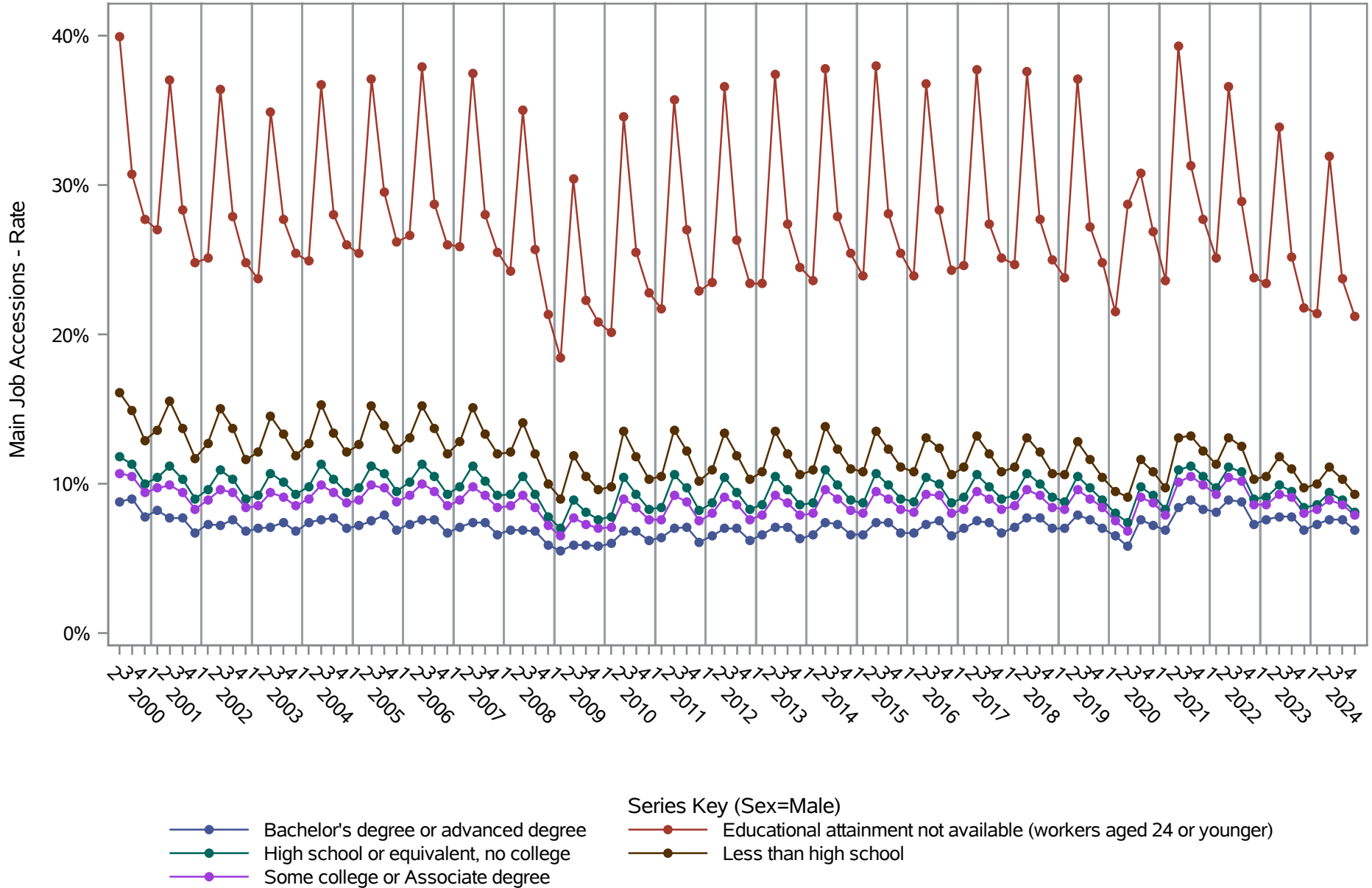


# National J2J Rates

## Main Job Accessions (Not Seasonally Adjusted)

### by Sex and Education (1 of 2) Sex=Male

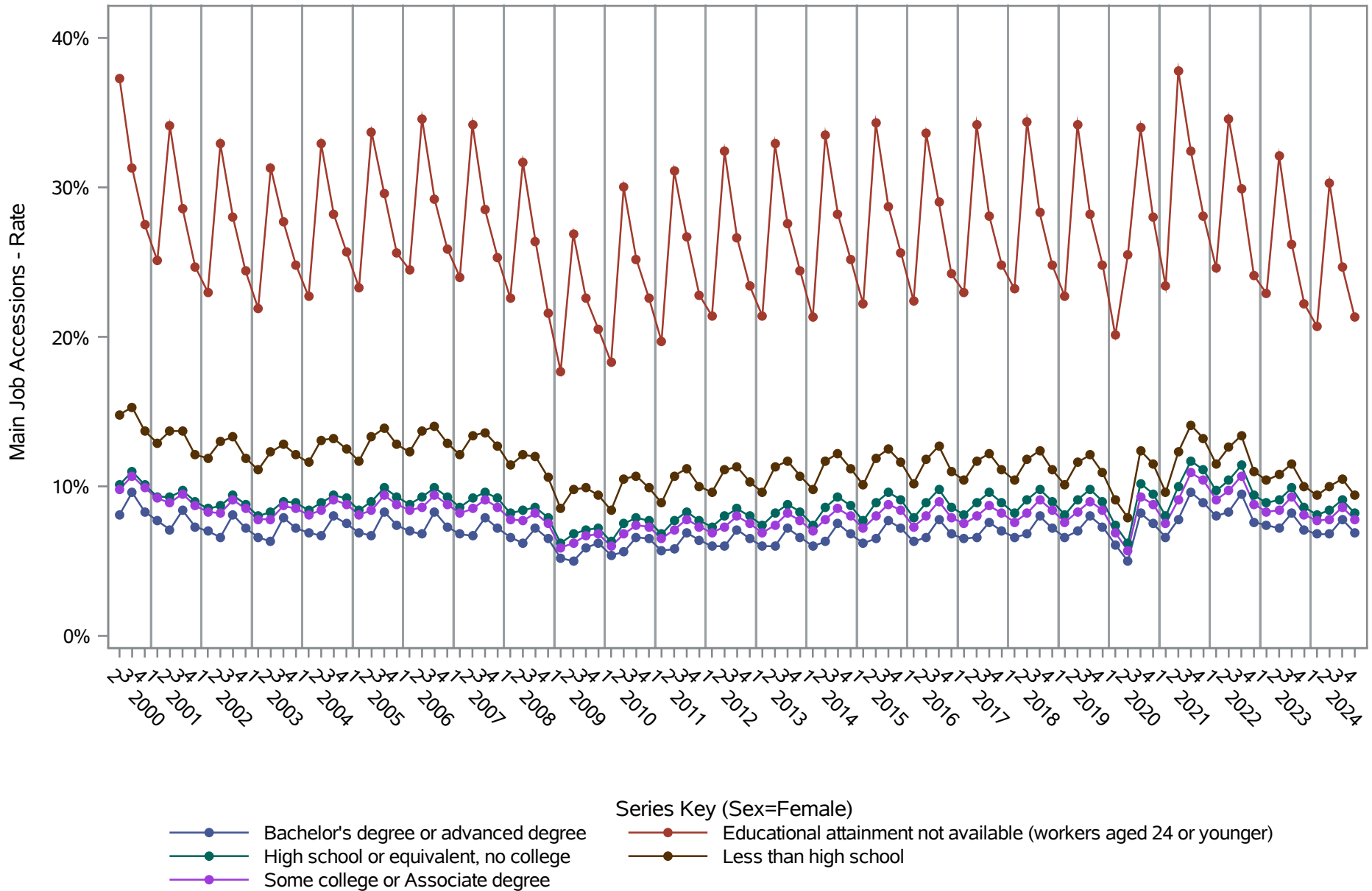


Source: United States Census Bureau, Job-to-Job Flow Statistics, Release R2025Q4 (Beta)

# National J2J Rates

## Main Job Accessions (Not Seasonally Adjusted)

### by Sex and Education (2 of 2) Sex=Female

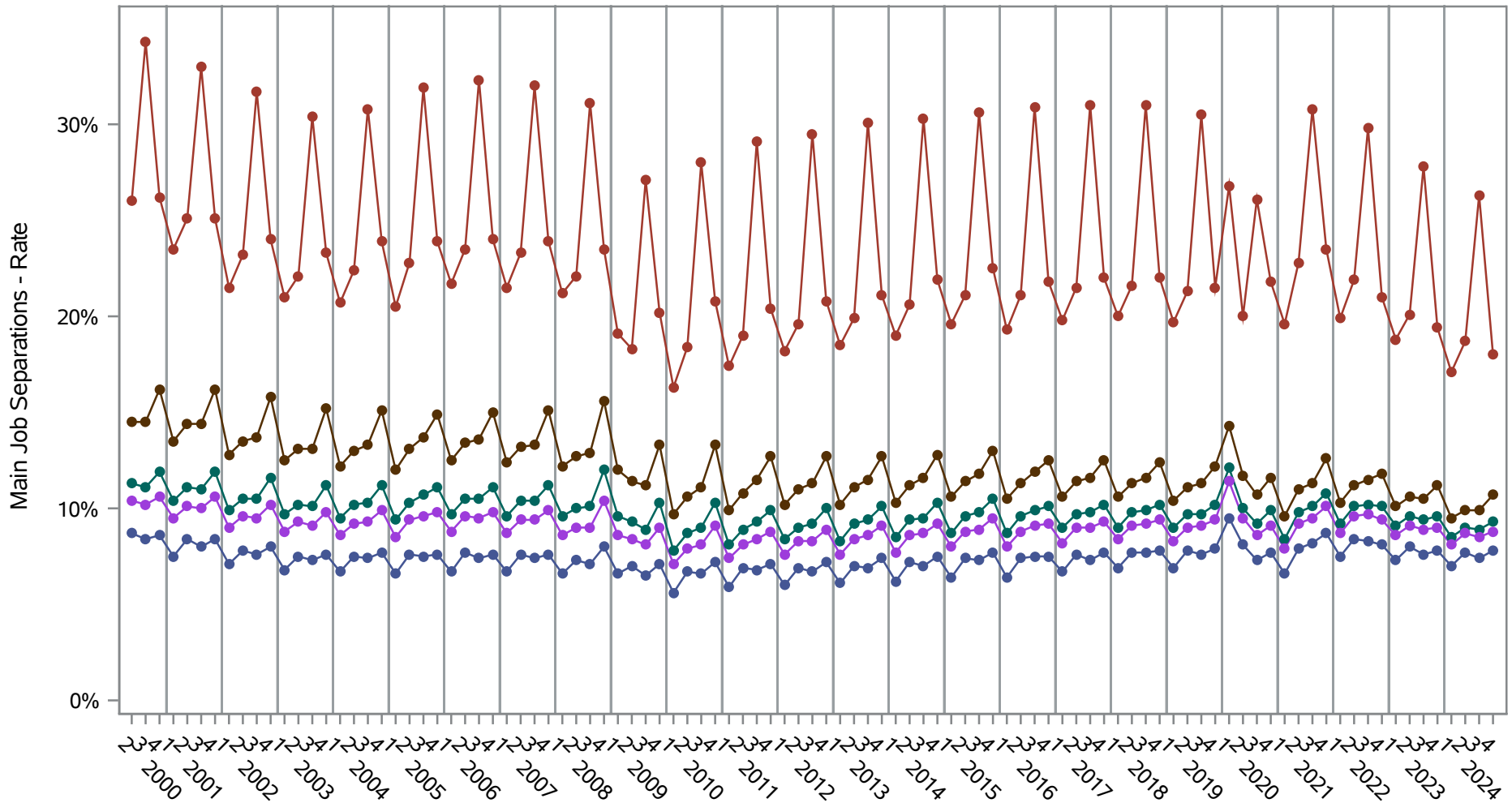


Source: United States Census Bureau, Job-to-Job Flow Statistics, Release R2025Q4 (Beta)

# National J2J Rates

## Main Job Separations (Not Seasonally Adjusted)

### by Sex and Education (1 of 2) Sex=Male



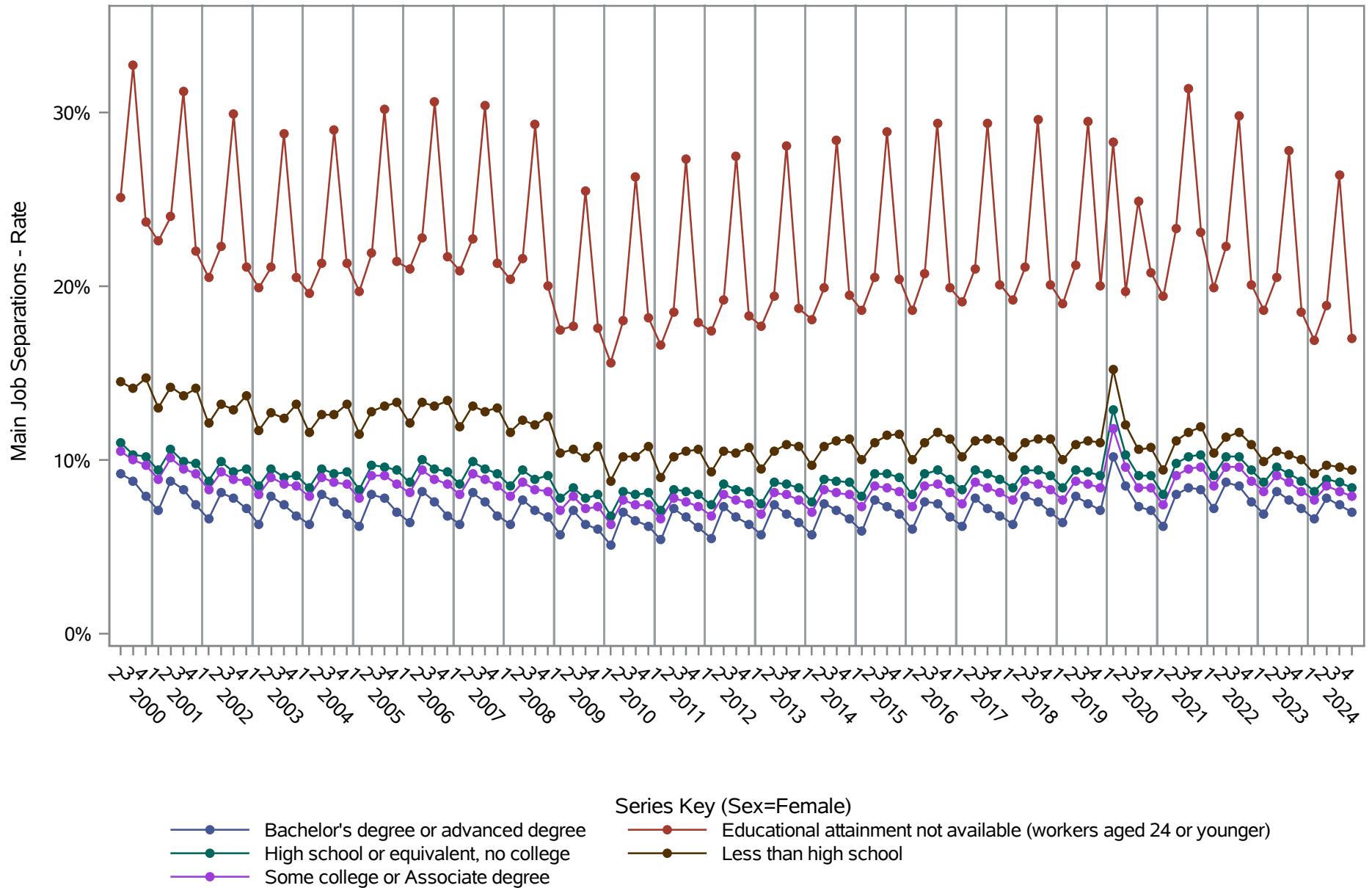
- Series Key (Sex=Male)
- Bachelor's degree or advanced degree
  - High school or equivalent, no college
  - Some college or Associate degree
  - Educational attainment not available (workers aged 24 or younger)
  - Less than high school

Source: United States Census Bureau, Job-to-Job Flow Statistics, Release R2025Q4 (Beta)

# National J2J Rates

## Main Job Separations (Not Seasonally Adjusted)

### by Sex and Education (2 of 2) Sex=Female

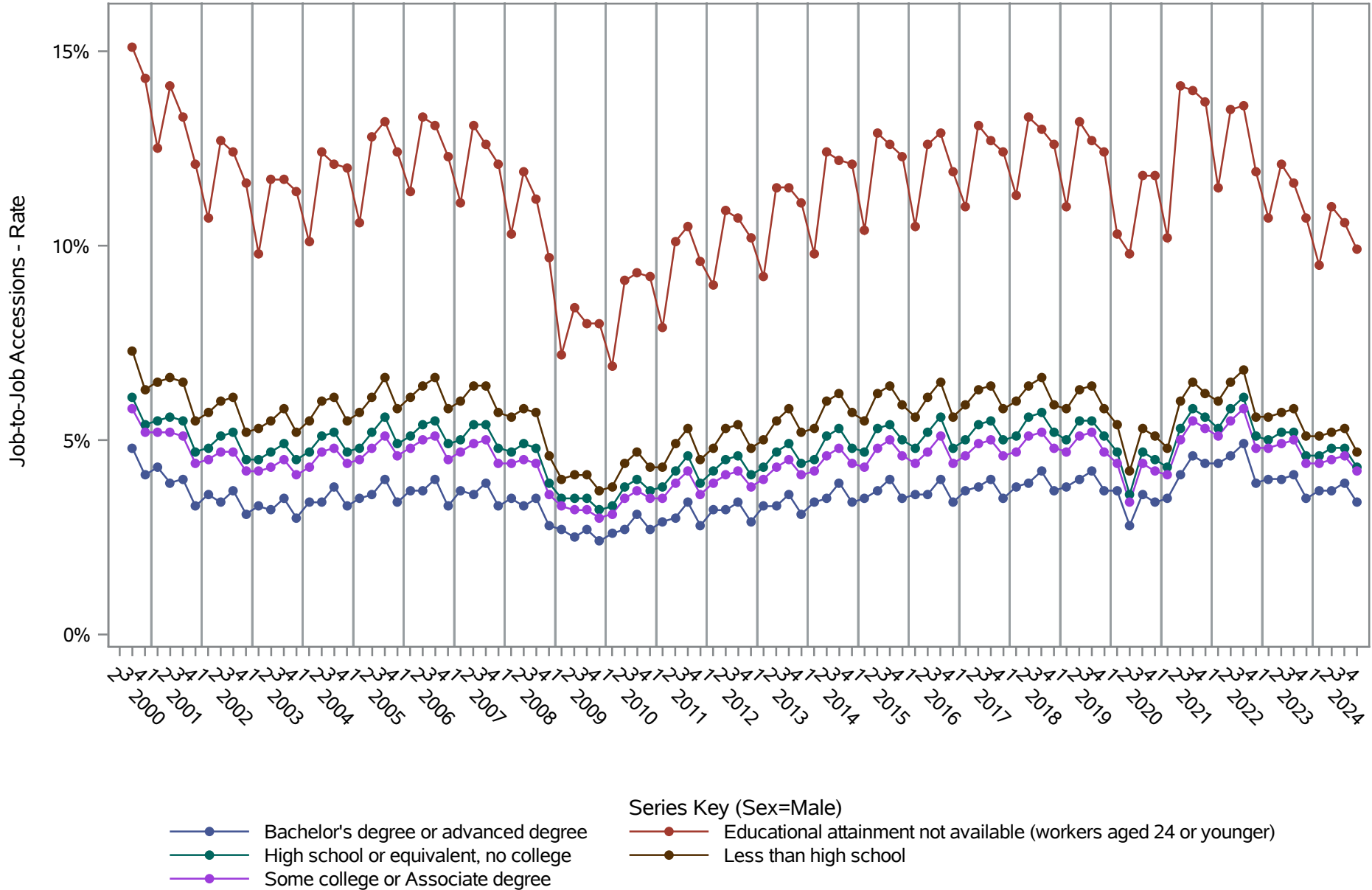


Source: United States Census Bureau, Job-to-Job Flow Statistics, Release R2025Q4 (Beta)

# National J2J Rates

## Job-to-Job Accessions (Not Seasonally Adjusted)

### by Sex and Education (1 of 2) Sex=Male

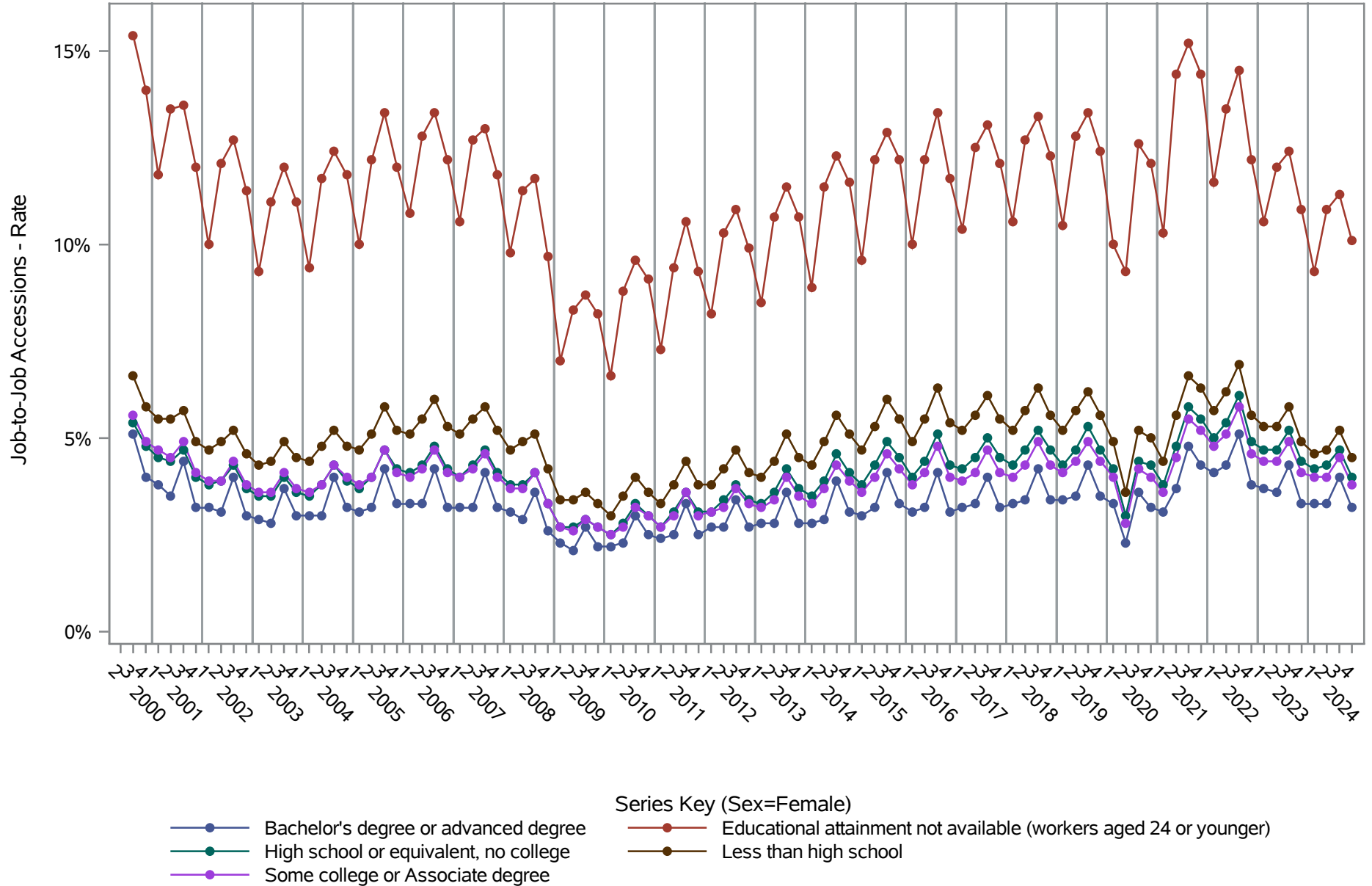


Source: United States Census Bureau, Job-to-Job Flow Statistics, Release R2025Q4 (Beta)

# National J2J Rates

## Job-to-Job Accessions (Not Seasonally Adjusted)

### by Sex and Education (2 of 2) Sex=Female

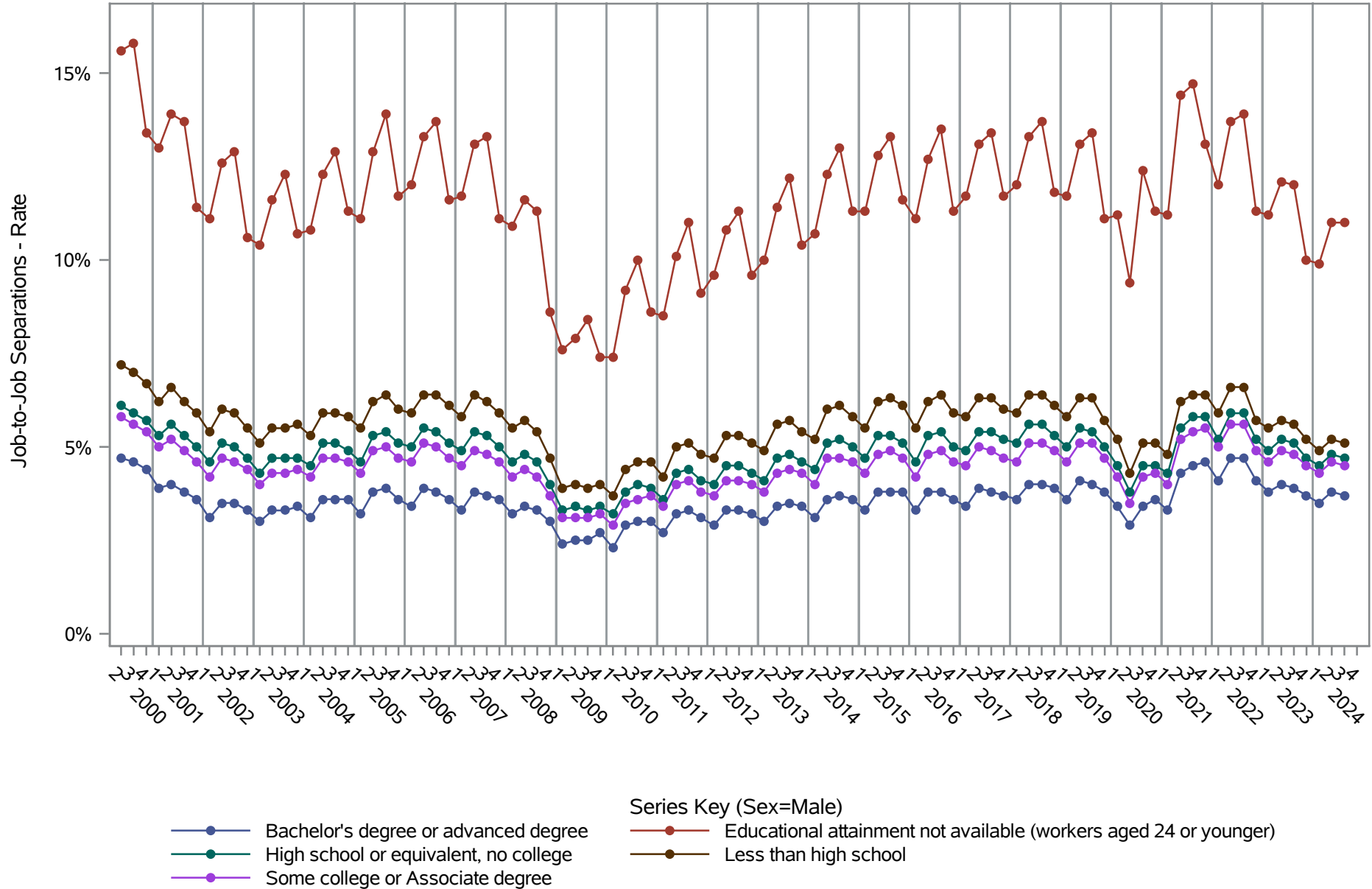


Source: United States Census Bureau, Job-to-Job Flow Statistics, Release R2025Q4 (Beta)

# National J2J Rates

## Job-to-Job Separations (Not Seasonally Adjusted)

### by Sex and Education (1 of 2) Sex=Male

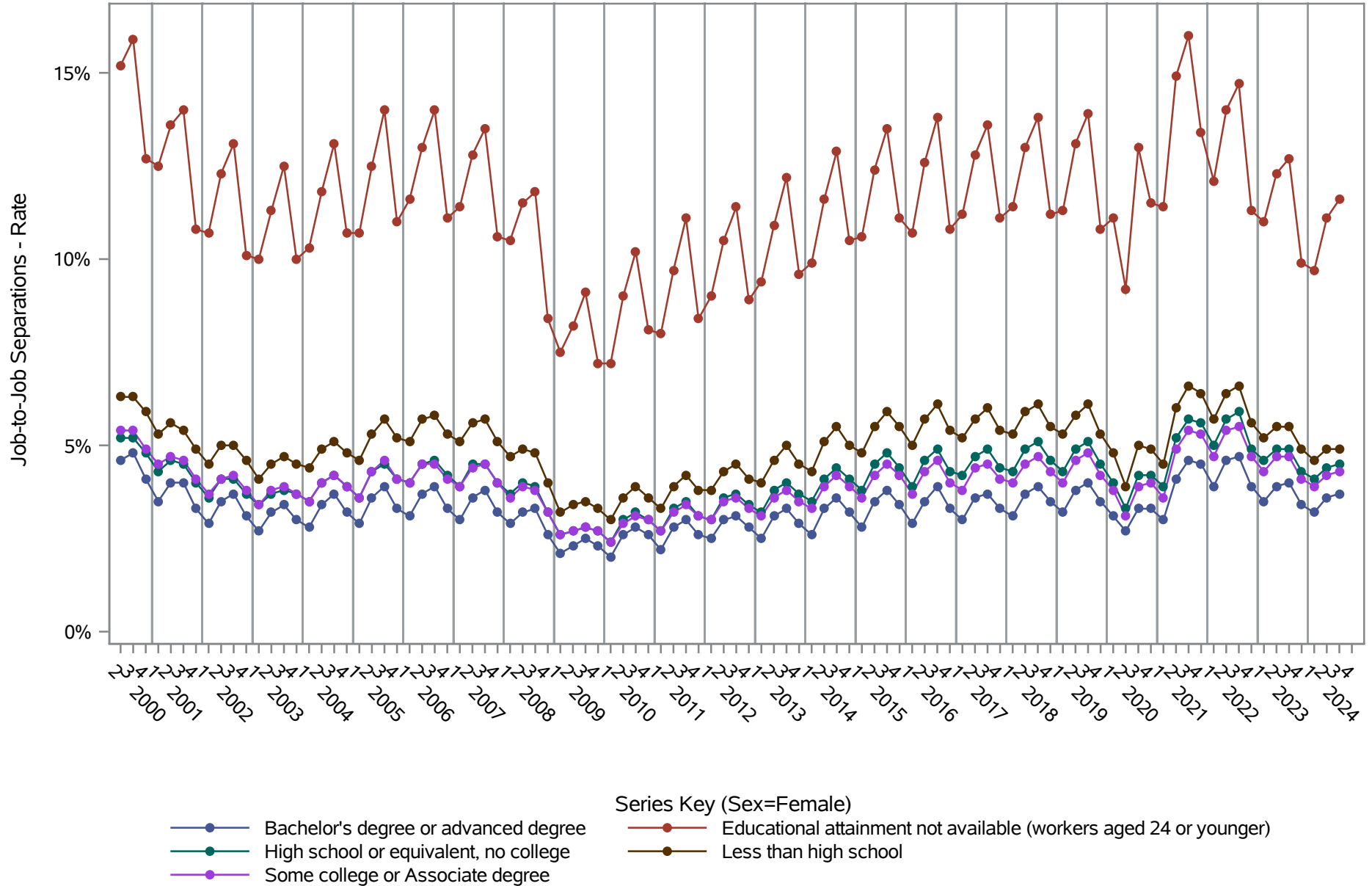


Source: United States Census Bureau, Job-to-Job Flow Statistics, Release R2025Q4 (Beta)

# National J2J Rates

## Job-to-Job Separations (Not Seasonally Adjusted)

### by Sex and Education (2 of 2) Sex=Female

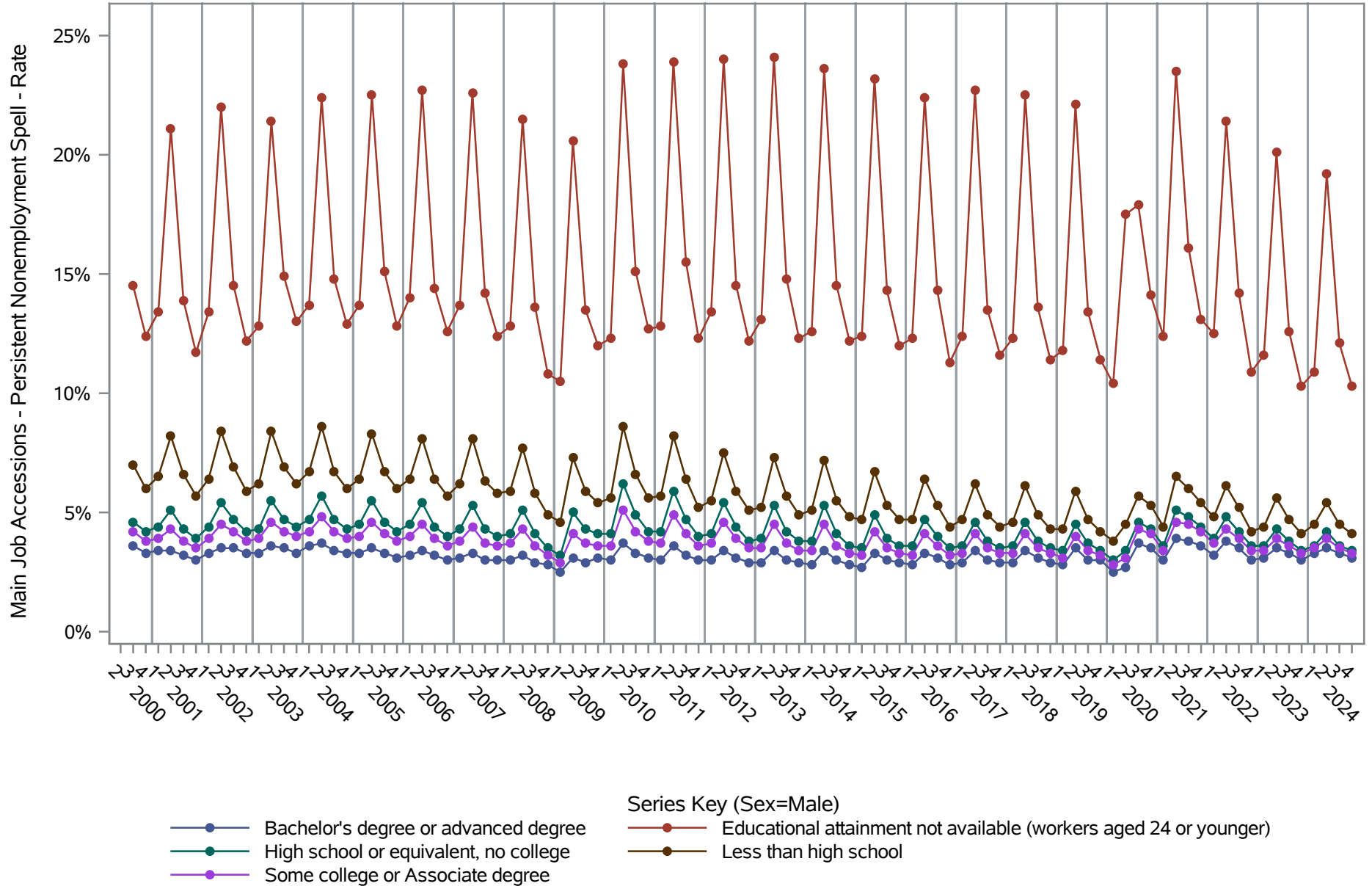


Source: United States Census Bureau, Job-to-Job Flow Statistics, Release R2025Q4 (Beta)



# National J2J Rates

## Main Job Accessions - Persistent Nonemployment Spell (Not Seasonally Adjusted) by Sex and Education (1 of 2) Sex=Male

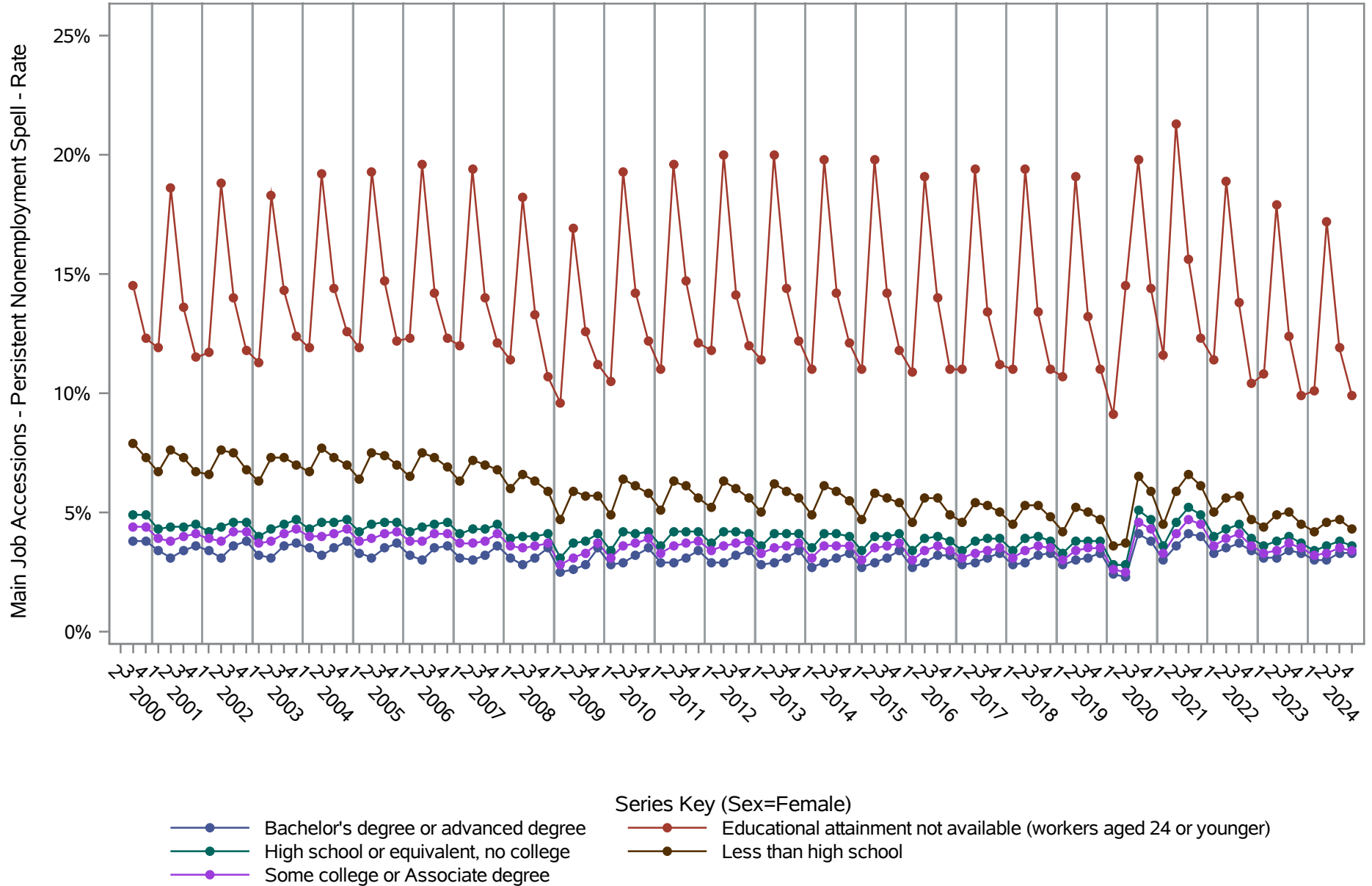


Source: United States Census Bureau, Job-to-Job Flow Statistics, Release R2025Q4 (Beta)

# National J2J Rates

## Main Job Accessions - Persistent Nonemployment Spell (Not Seasonally Adjusted)

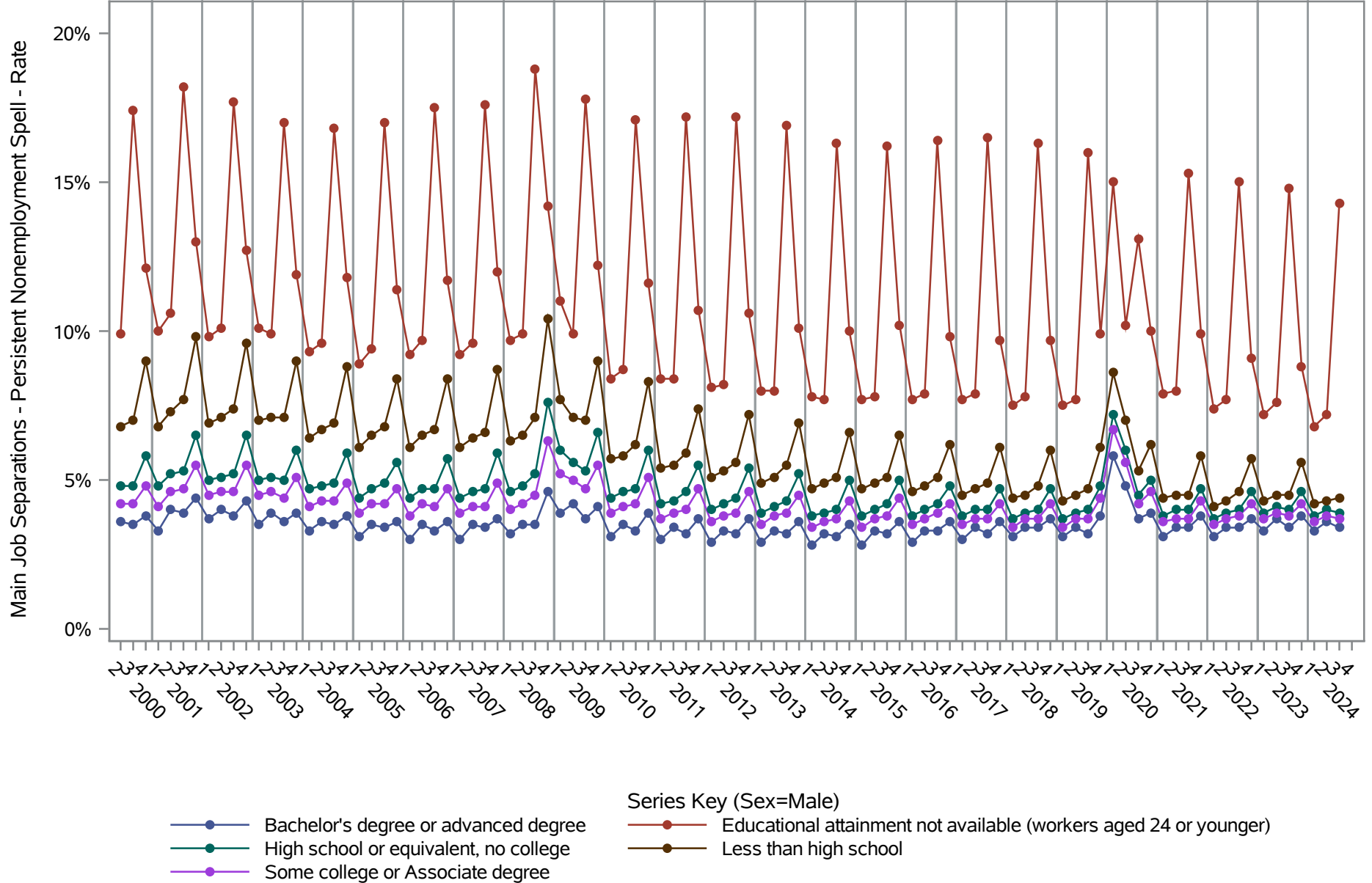
### by Sex and Education (2 of 2) Sex=Female



Source: United States Census Bureau, Job-to-Job Flow Statistics, Release R2025Q4 (Beta)

# National J2J Rates

## Main Job Separations - Persistent Nonemployment Spell (Not Seasonally Adjusted) by Sex and Education (1 of 2) Sex=Male

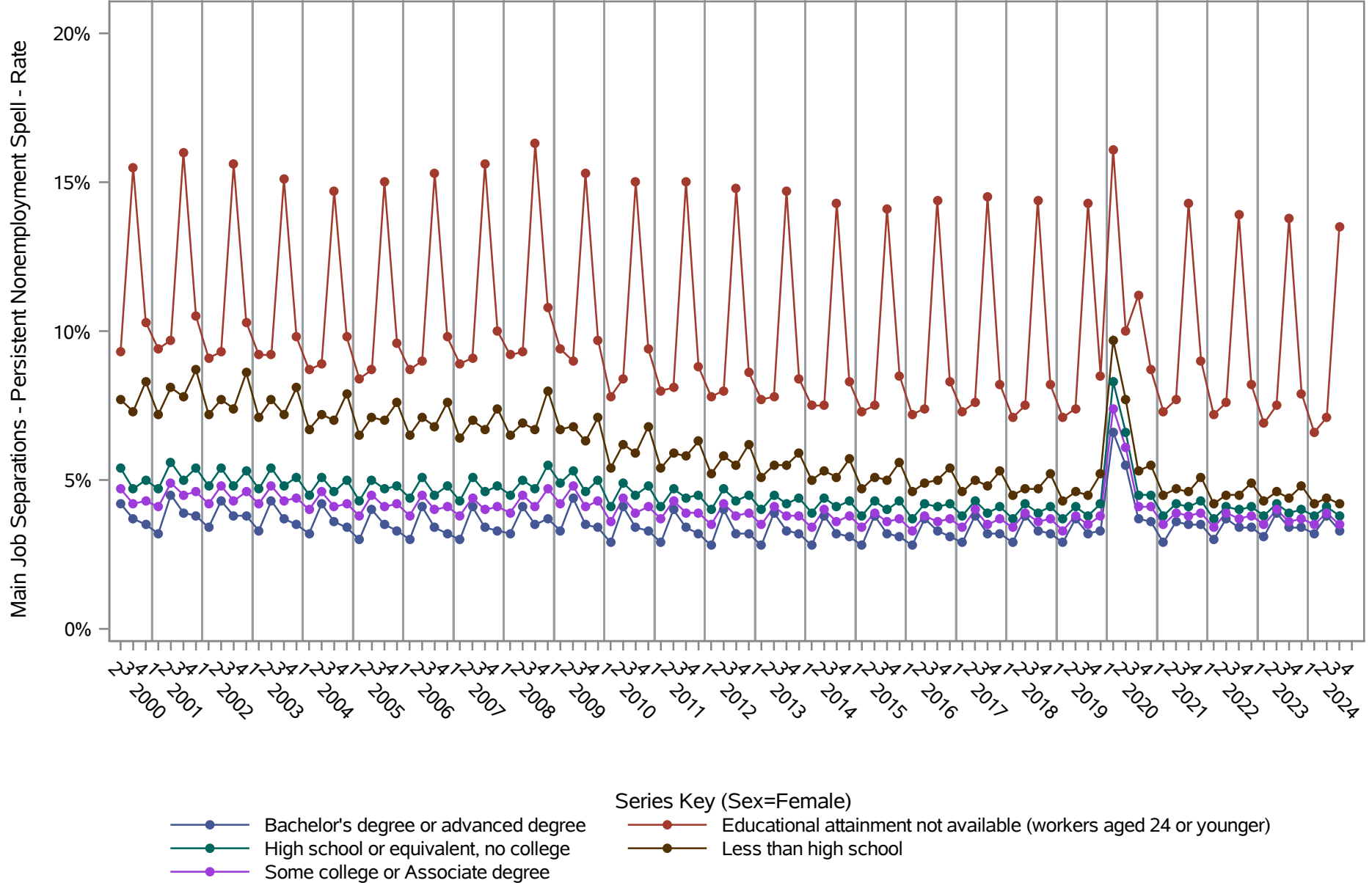


Source: United States Census Bureau, Job-to-Job Flow Statistics, Release R2025Q4 (Beta)

# National J2J Rates

## Main Job Separations - Persistent Nonemployment Spell (Not Seasonally Adjusted)

### by Sex and Education (2 of 2) Sex=Female

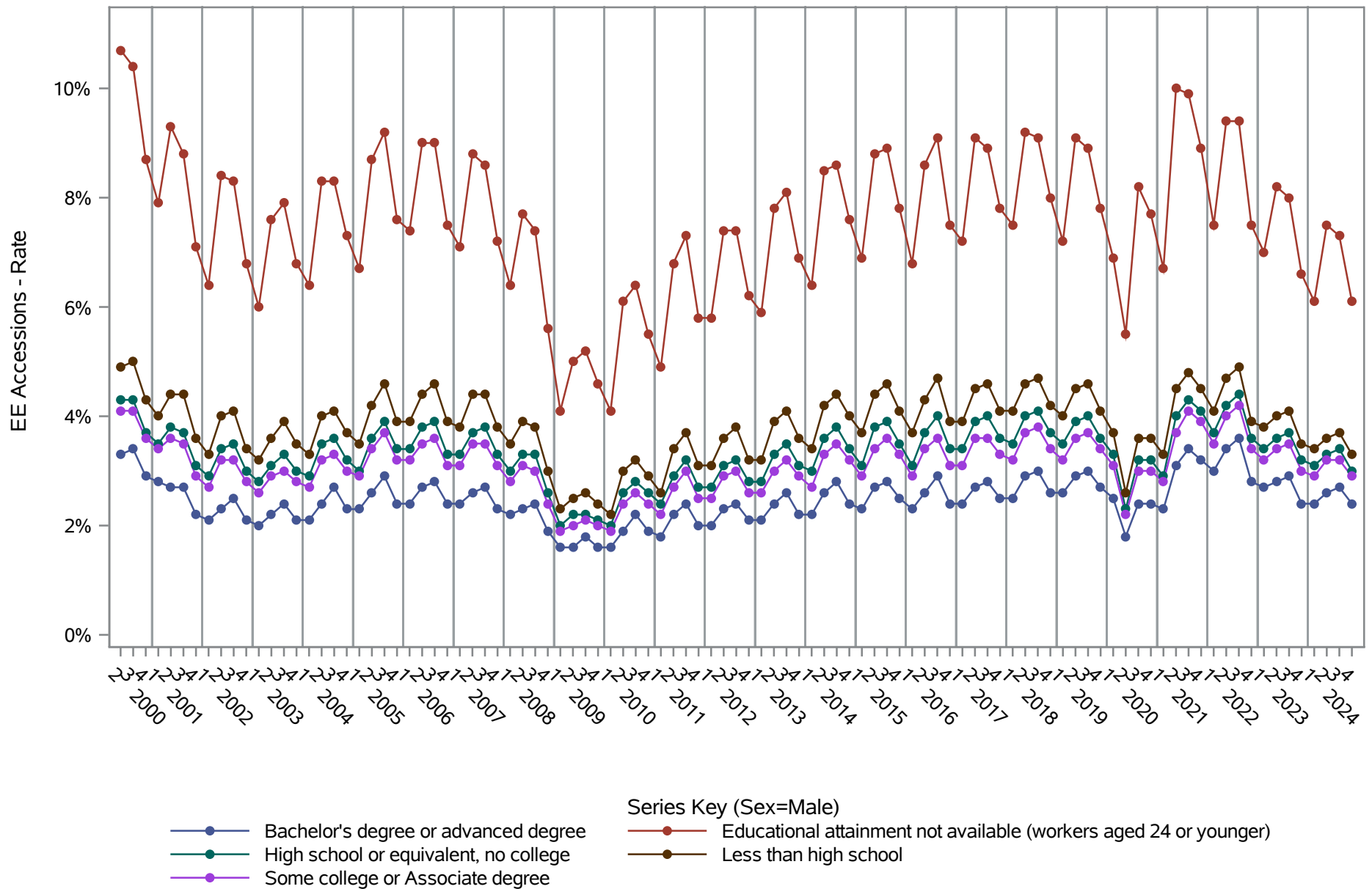


Source: United States Census Bureau, Job-to-Job Flow Statistics, Release R2025Q4 (Beta)

# National J2J Rates

## EE Accessions (Not Seasonally Adjusted)

### by Sex and Education (1 of 2) Sex=Male

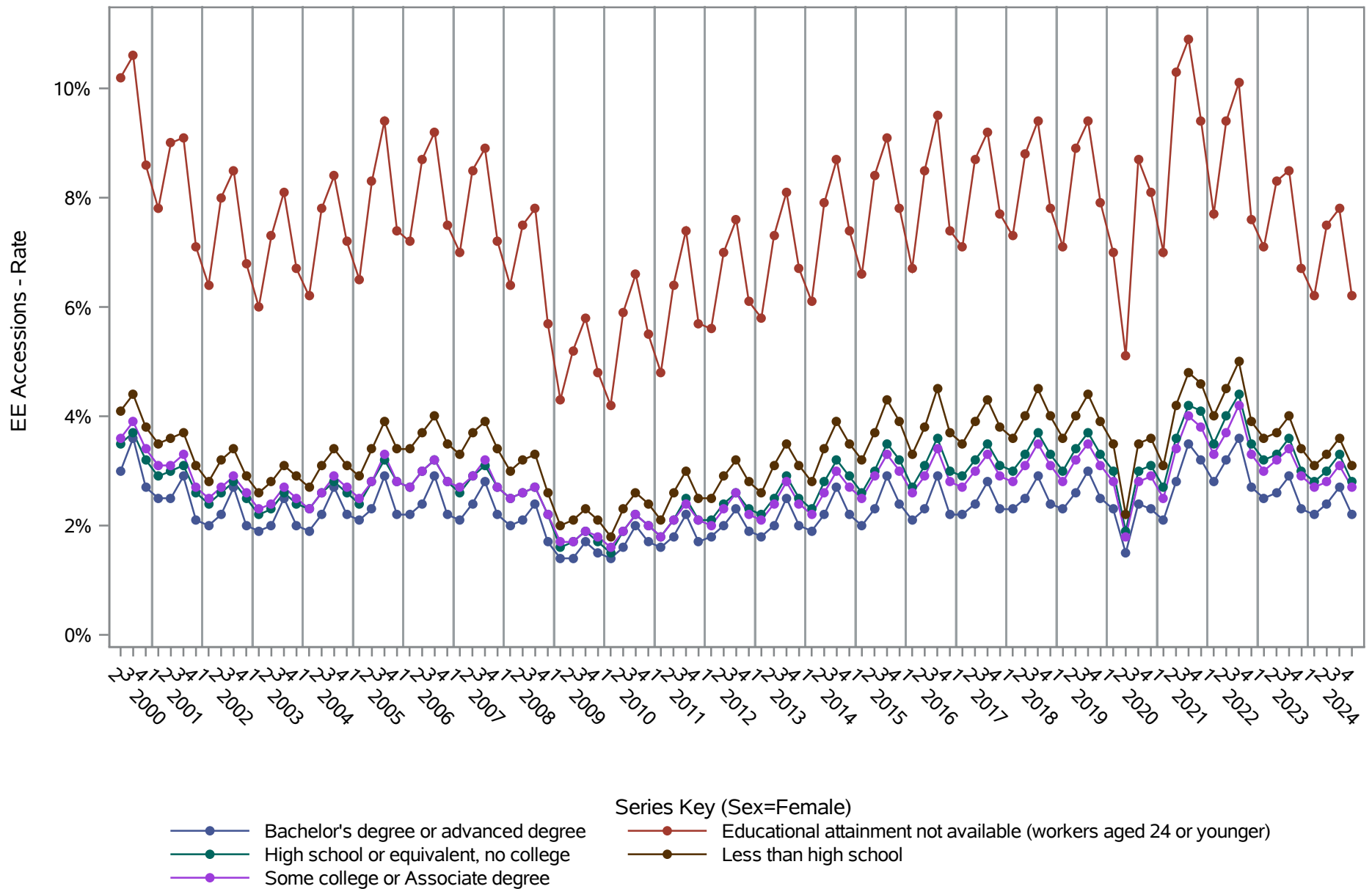


Source: United States Census Bureau, Job-to-Job Flow Statistics, Release R2025Q4 (Beta)

# National J2J Rates

## EE Accessions (Not Seasonally Adjusted)

### by Sex and Education (2 of 2) Sex=Female

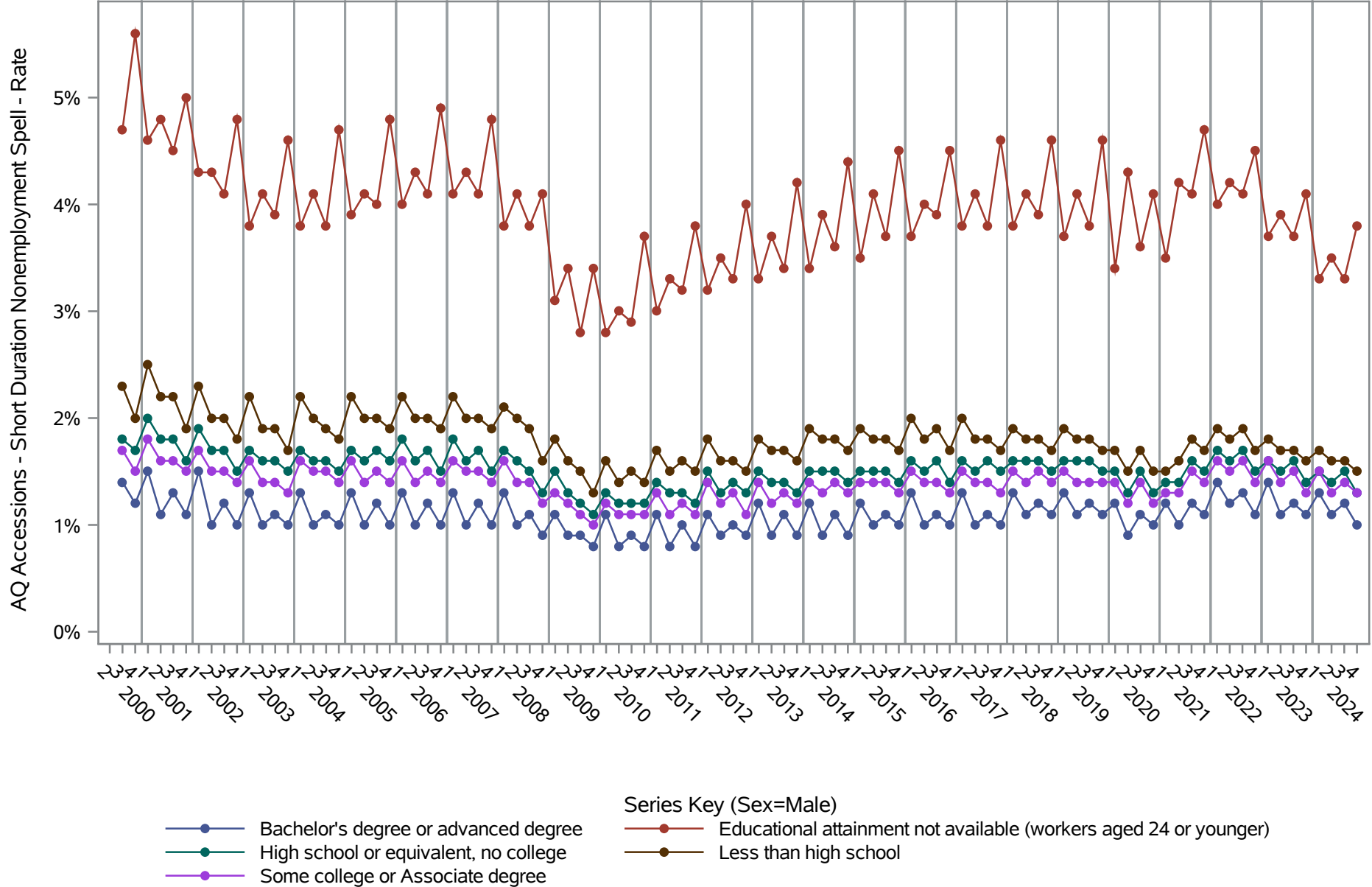


Source: United States Census Bureau, Job-to-Job Flow Statistics, Release R2025Q4 (Beta)

# National J2J Rates

## AQ Accessions - Short Duration Nonemployment Spell (Not Seasonally Adjusted)

### by Sex and Education (1 of 2) Sex=Male

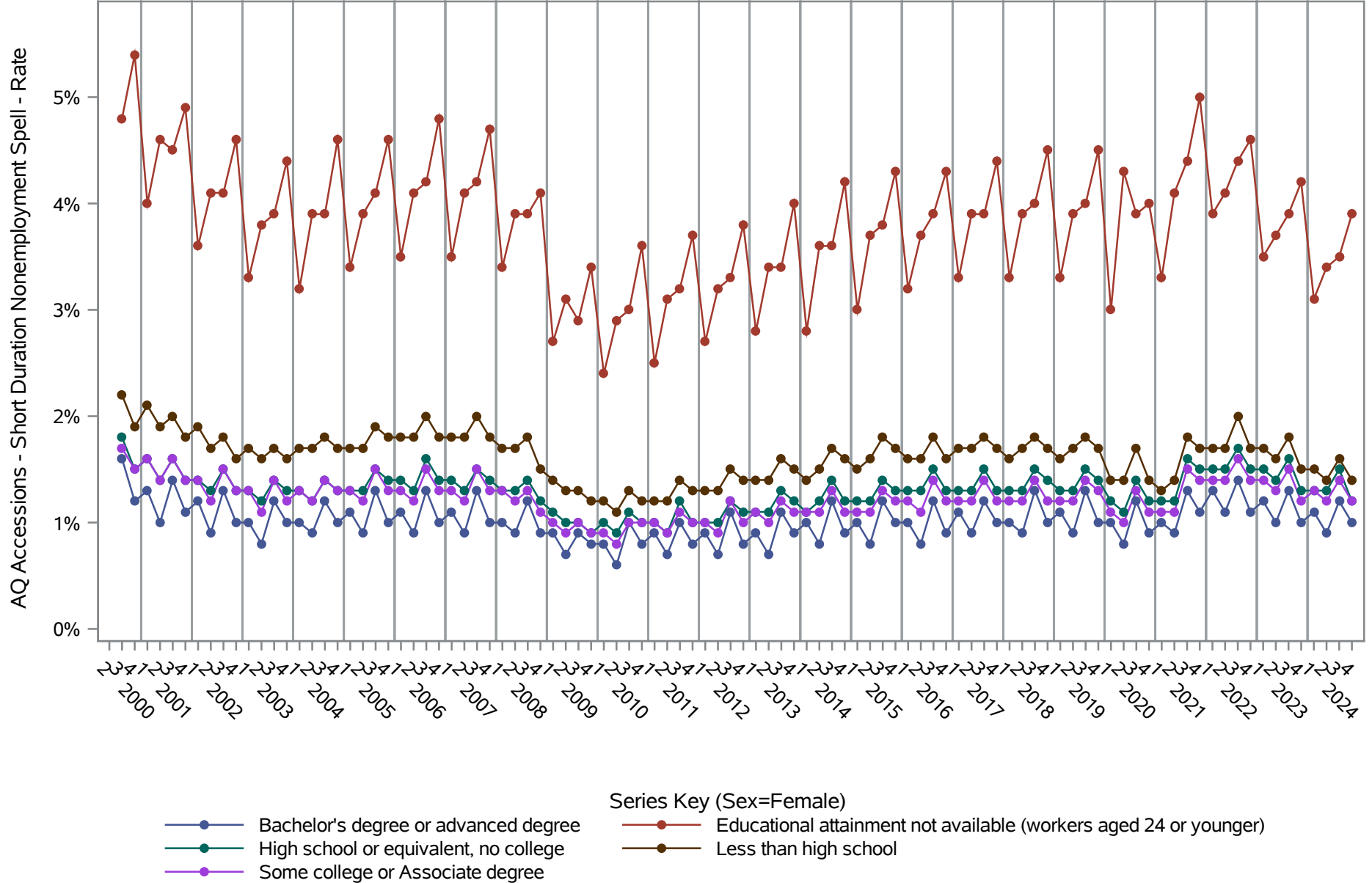


Source: United States Census Bureau, Job-to-Job Flow Statistics, Release R2025Q4 (Beta)

# National J2J Rates

## AQ Accessions - Short Duration Nonemployment Spell (Not Seasonally Adjusted)

### by Sex and Education (2 of 2) Sex=Female



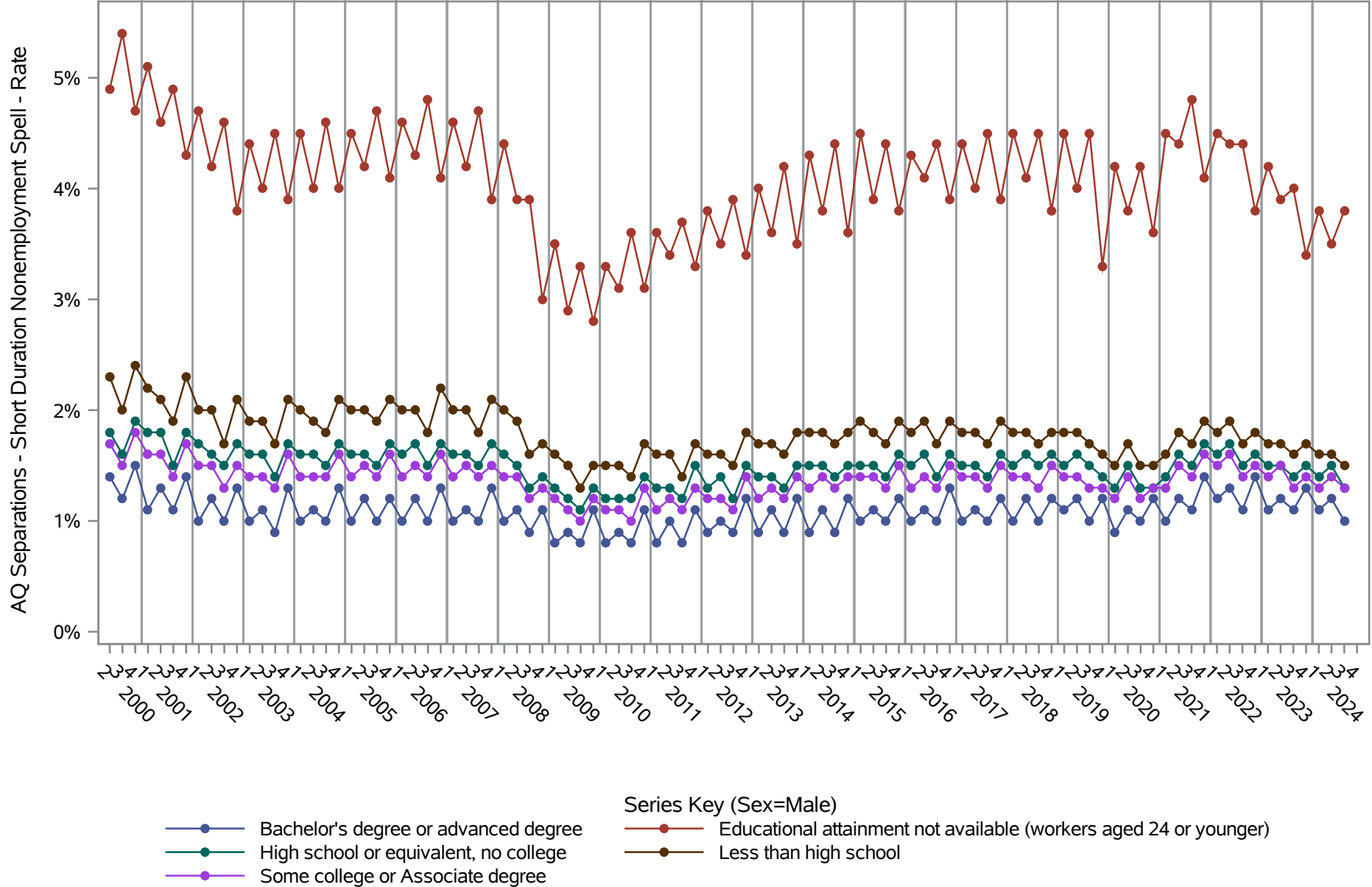
Source: United States Census Bureau, Job-to-Job Flow Statistics, Release R2025Q4 (Beta)



# National J2J Rates

## AQ Separations - Short Duration Nonemployment Spell (Not Seasonally Adjusted)

### by Sex and Education (1 of 2) Sex=Male

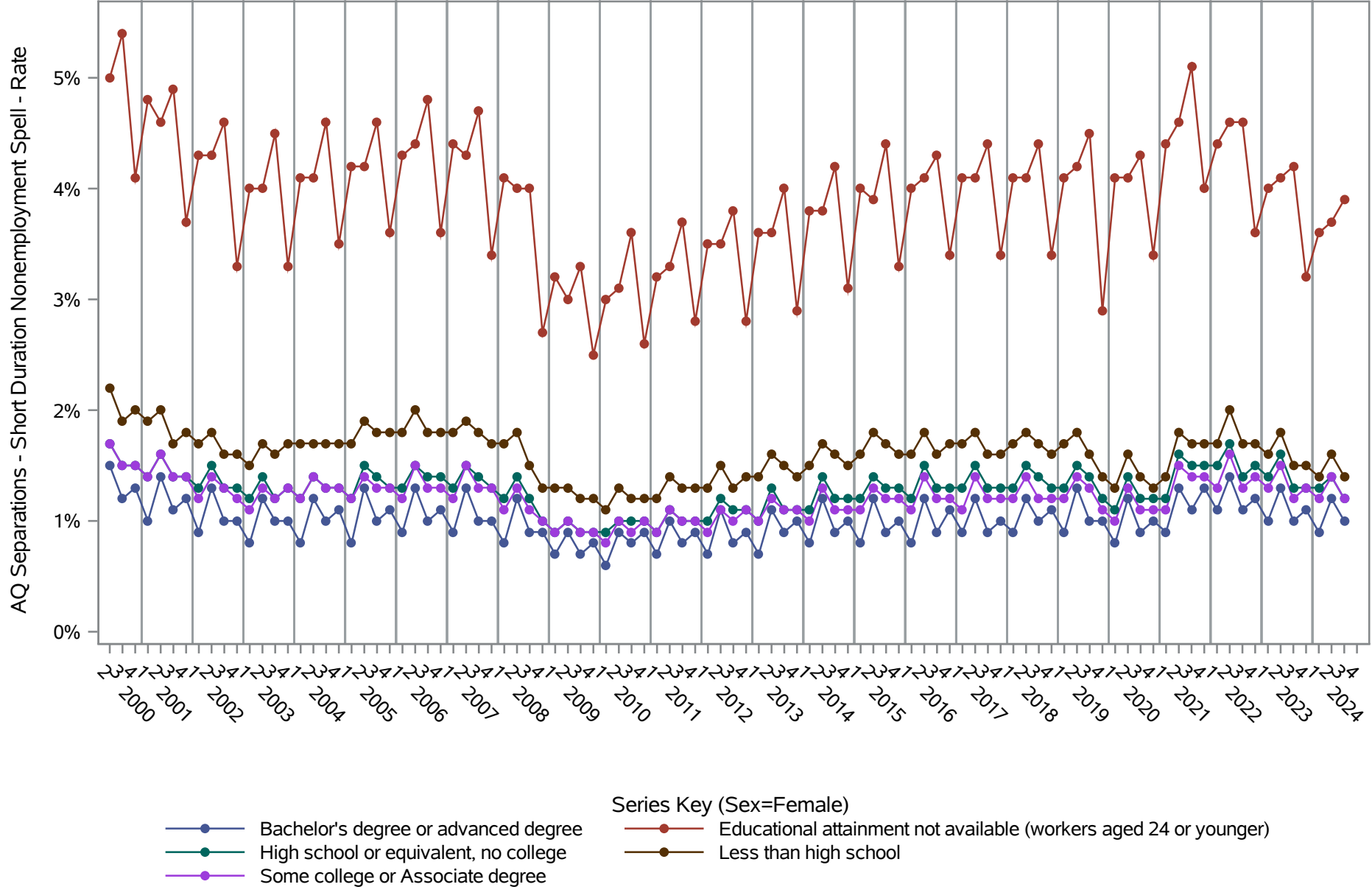


Source: United States Census Bureau, Job-to-Job Flow Statistics, Release R2025Q4 (Beta)

# National J2J Rates

## AQ Separations - Short Duration Nonemployment Spell (Not Seasonally Adjusted)

### by Sex and Education (2 of 2) Sex=Female



Source: United States Census Bureau, Job-to-Job Flow Statistics, Release R2025Q4 (Beta)