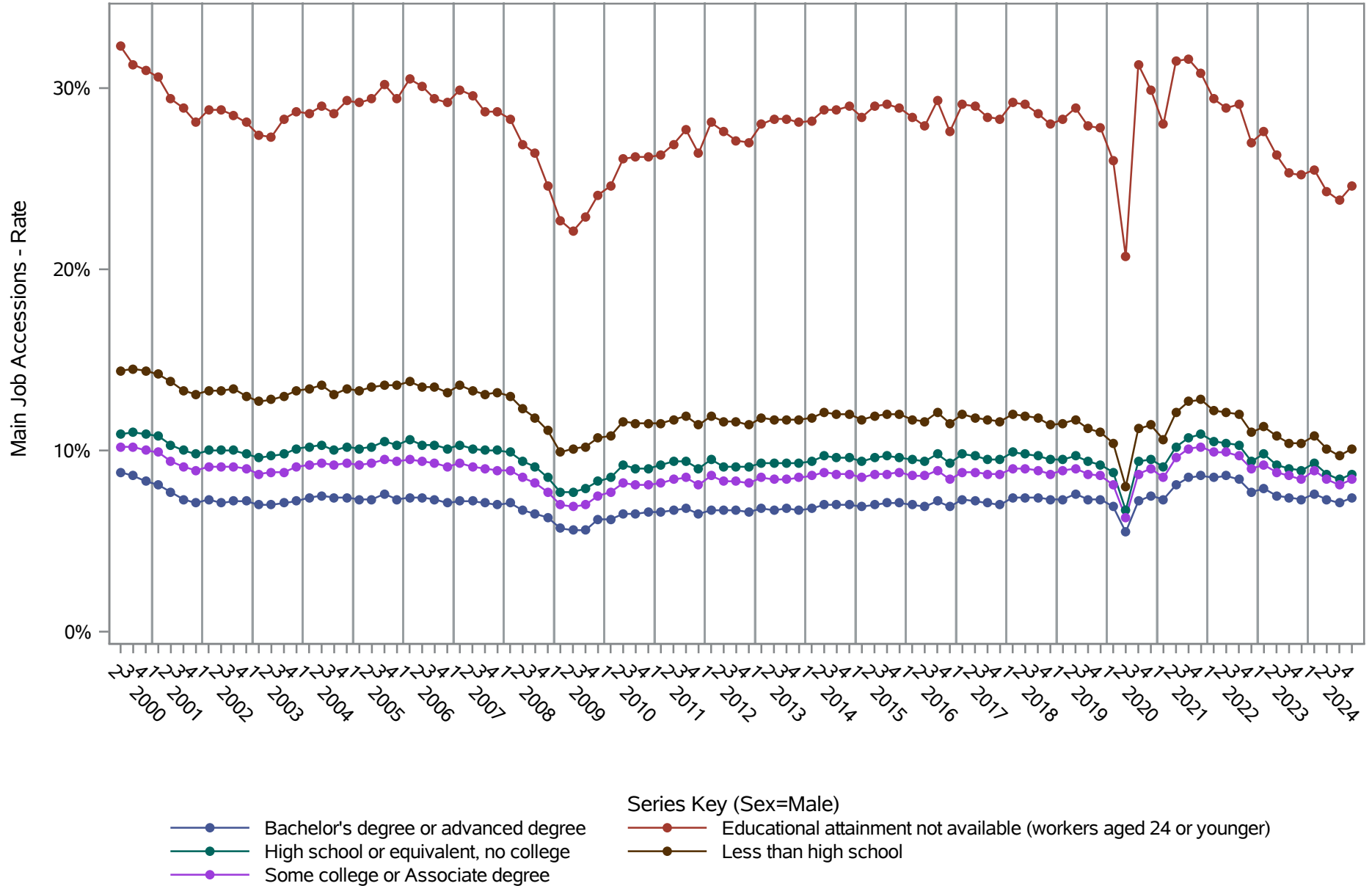


National J2J Rates

Main Job Accessions (Seasonally Adjusted)

by Sex and Education (1 of 2) Sex=Male

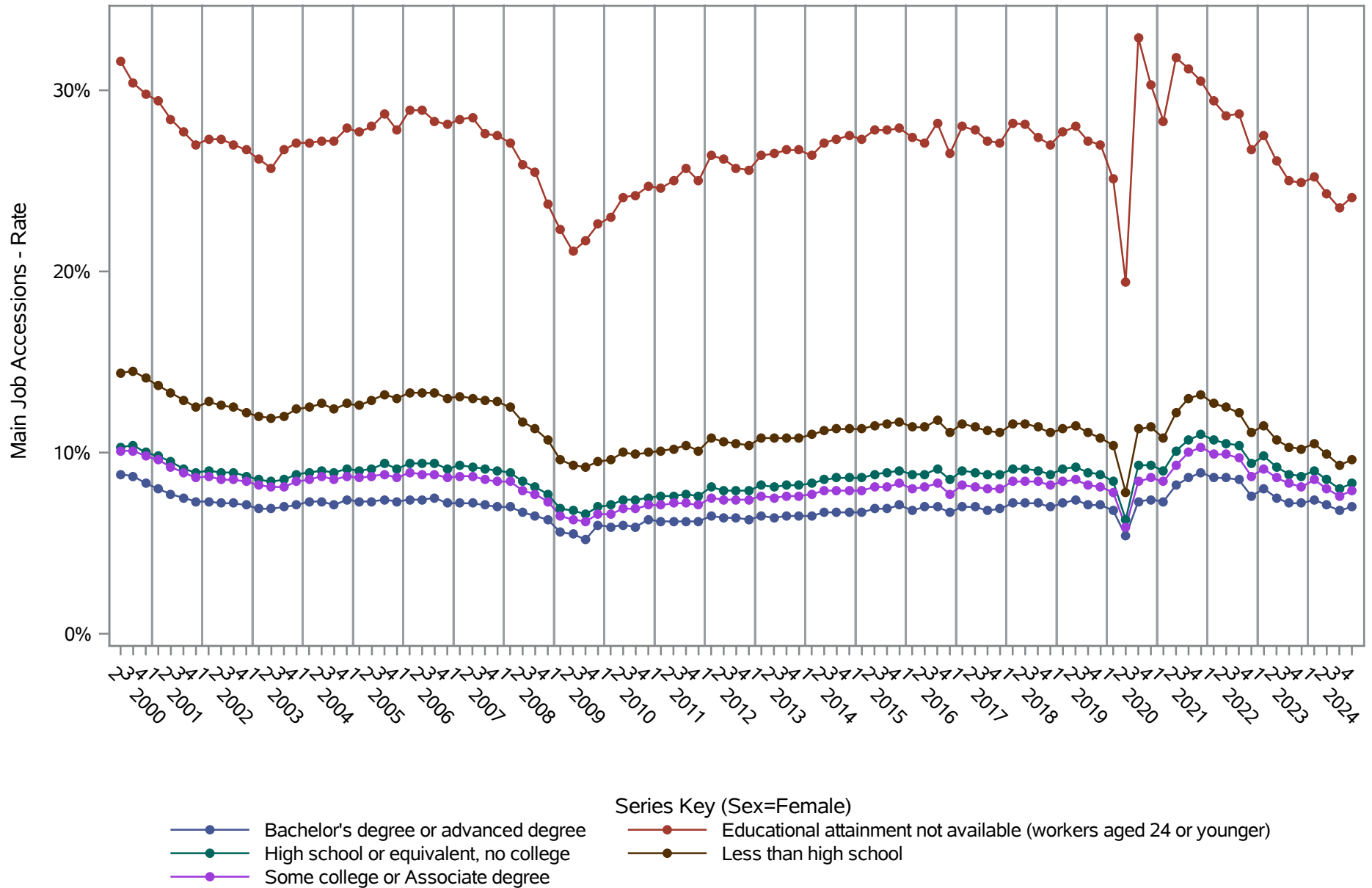


Source: United States Census Bureau, Job-to-Job Flow Statistics, Release R2025Q4 (Beta)

National J2J Rates

Main Job Accessions (Seasonally Adjusted)

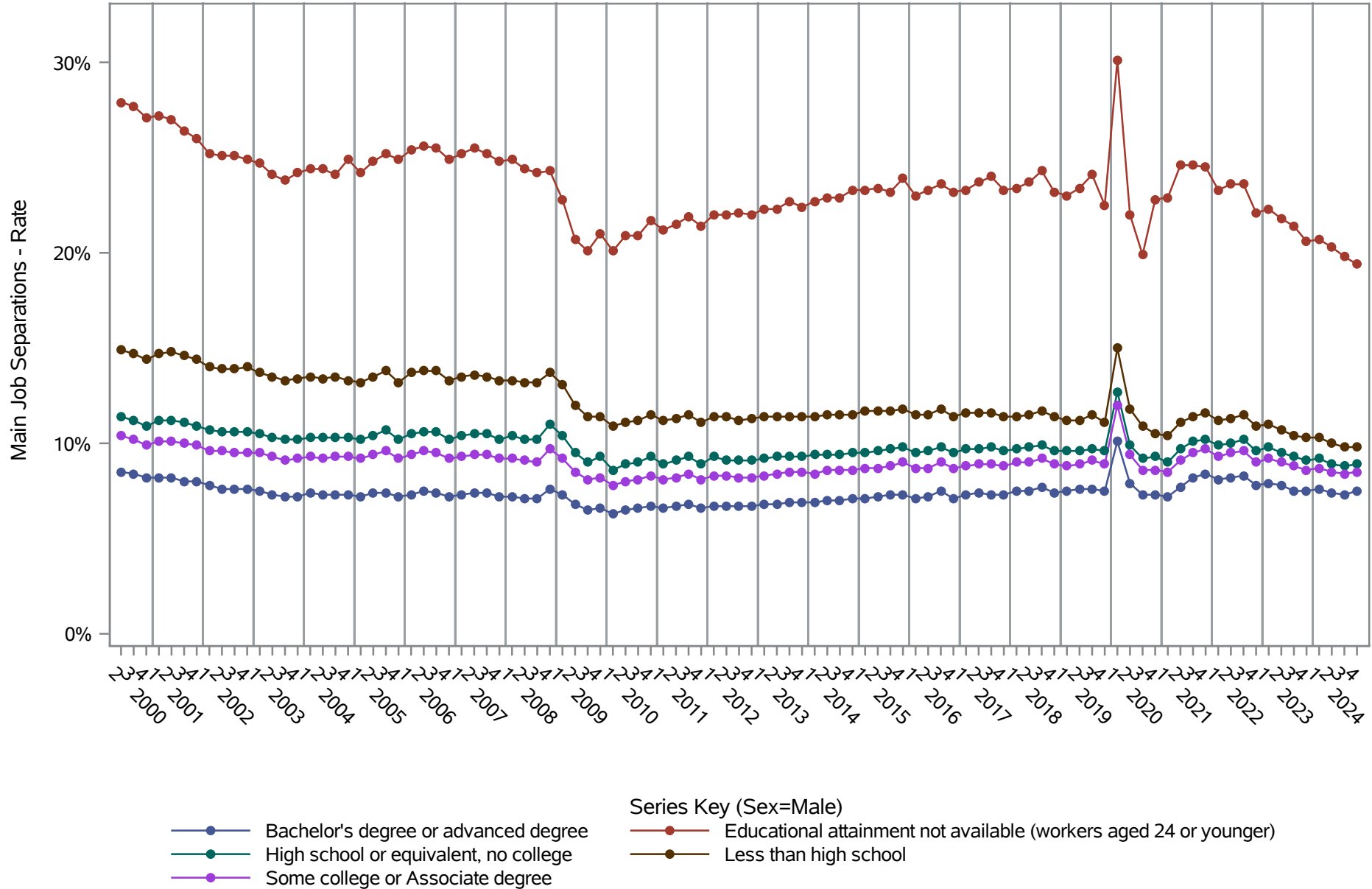
by Sex and Education (2 of 2) Sex=Female



Source: United States Census Bureau, Job-to-Job Flow Statistics, Release R2025Q4 (Beta)

National J2J Rates

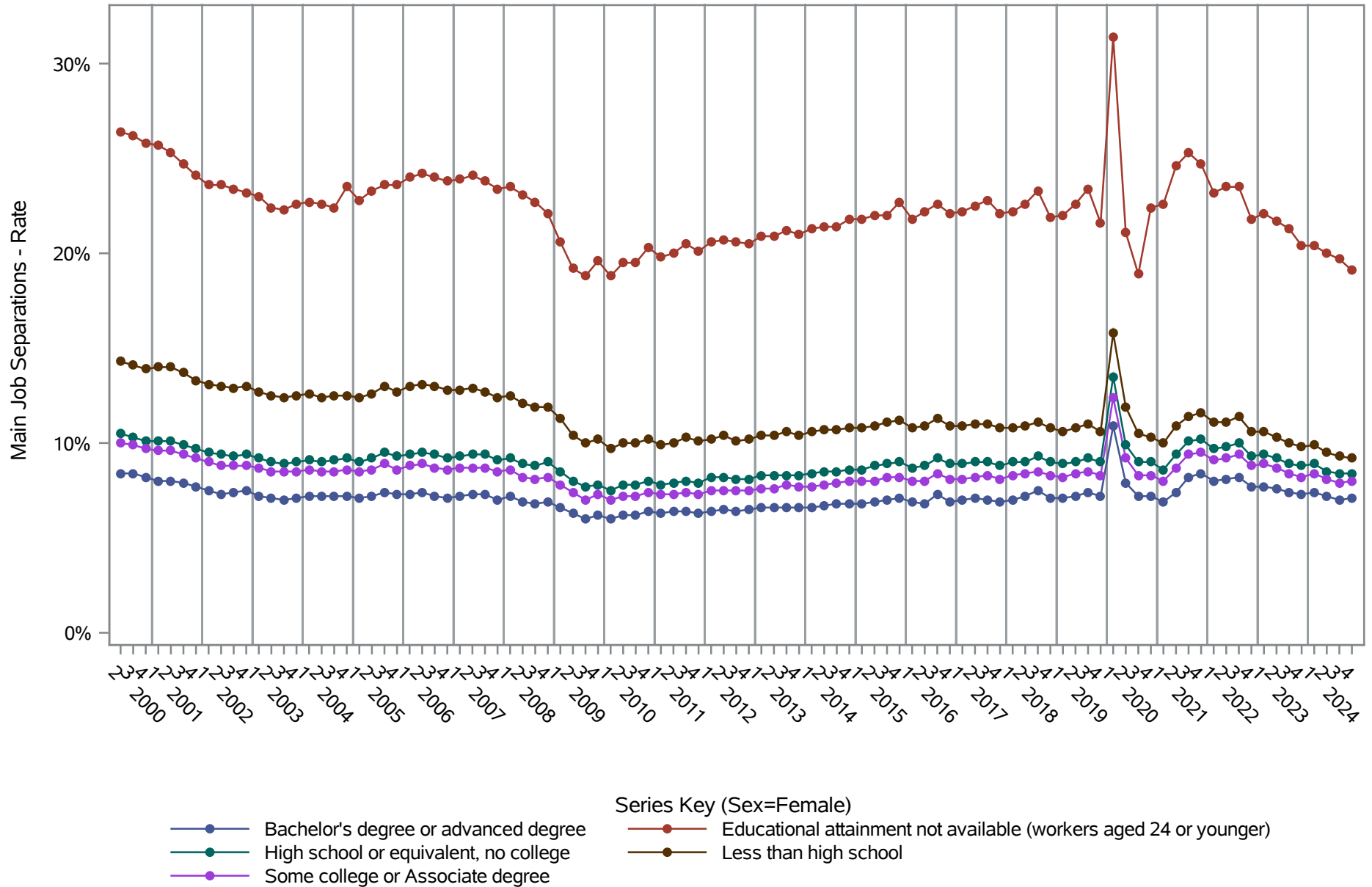
Main Job Separations (Seasonally Adjusted) by Sex and Education (1 of 2) Sex=Male



Source: United States Census Bureau, Job-to-Job Flow Statistics, Release R2025Q4 (Beta)

National J2J Rates

Main Job Separations (Seasonally Adjusted) by Sex and Education (2 of 2) Sex=Female

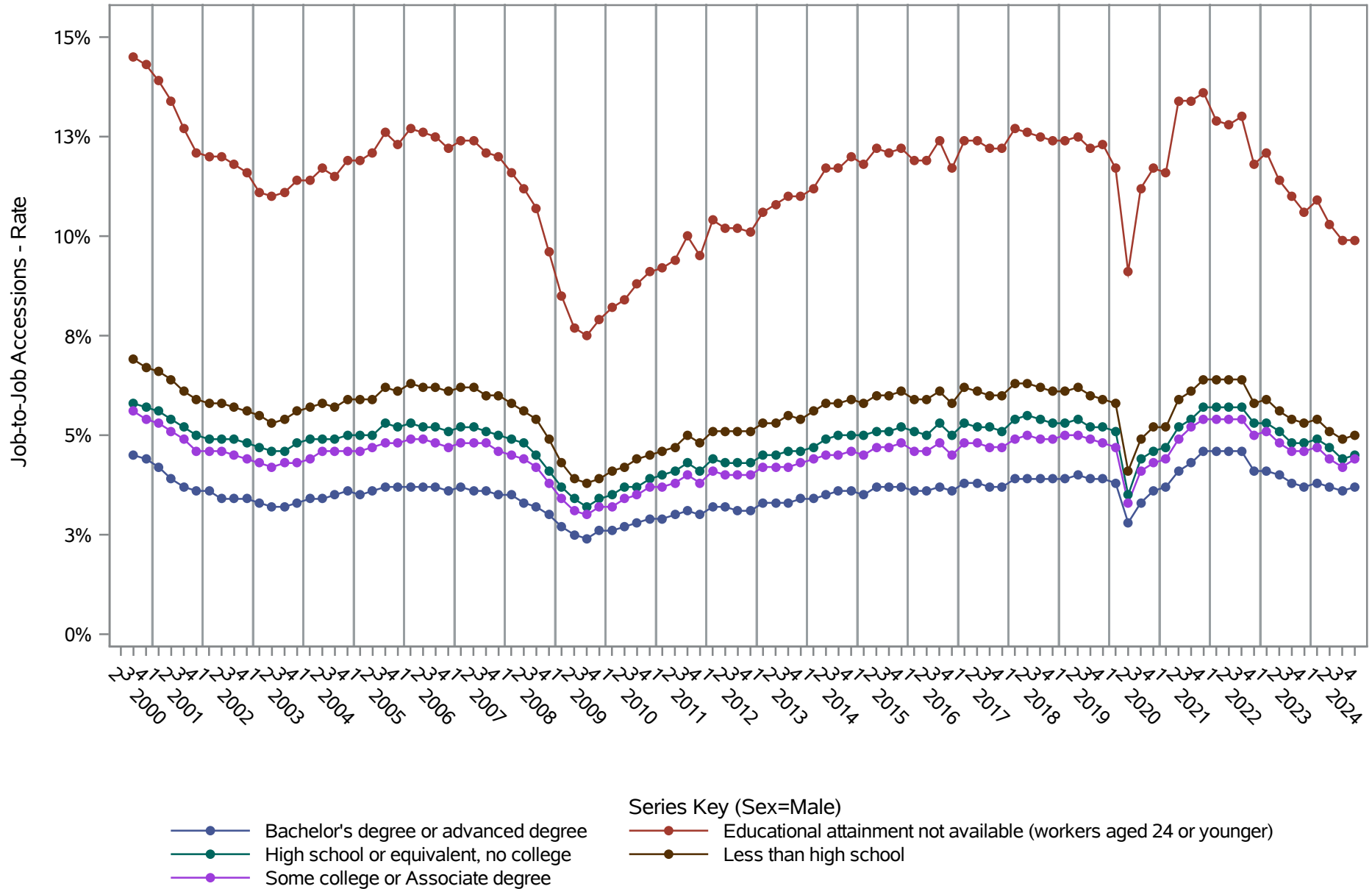


Source: United States Census Bureau, Job-to-Job Flow Statistics, Release R2025Q4 (Beta)

National J2J Rates

Job-to-Job Accessions (Seasonally Adjusted)

by Sex and Education (1 of 2) Sex=Male

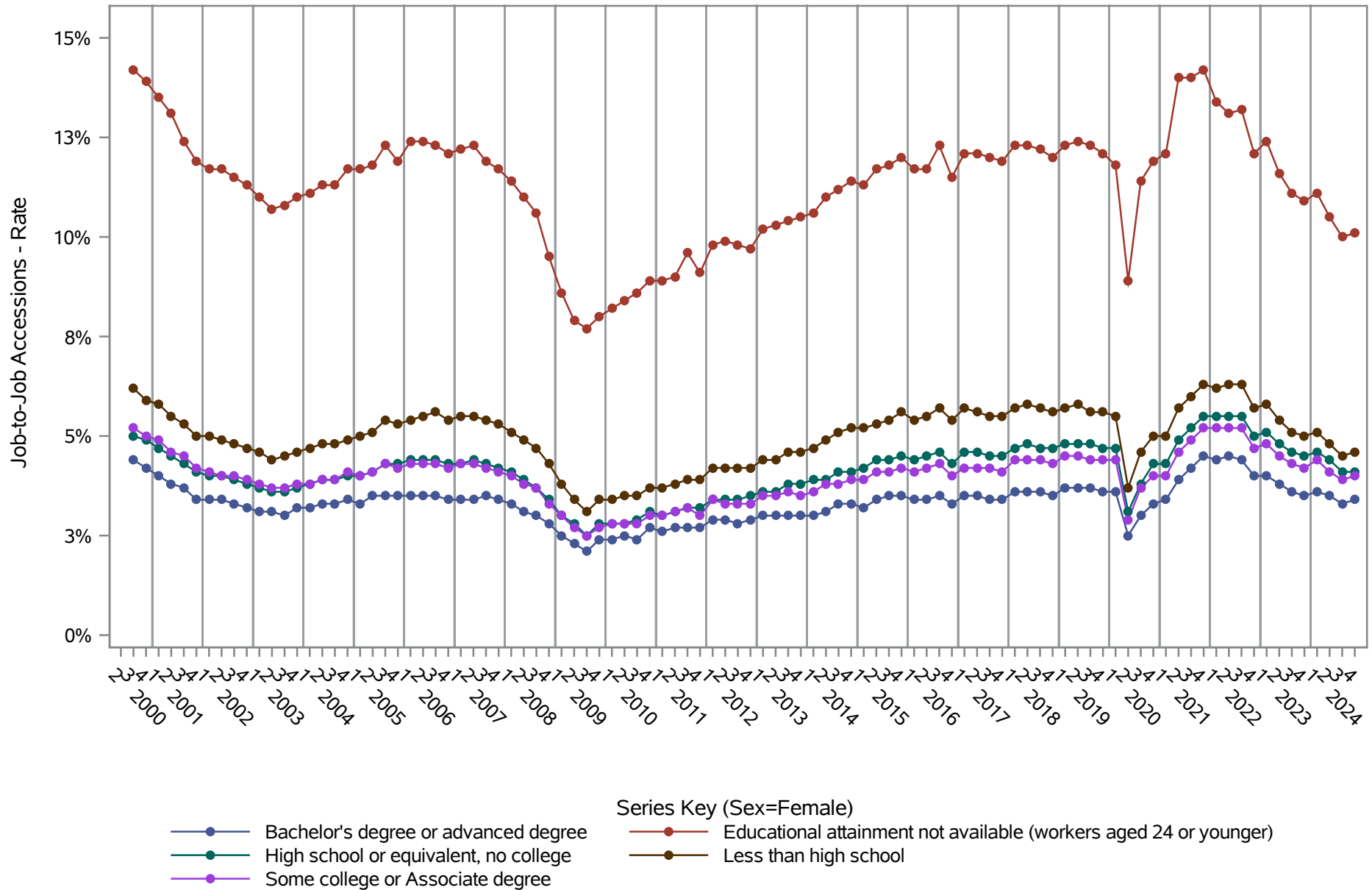


Source: United States Census Bureau, Job-to-Job Flow Statistics, Release R2025Q4 (Beta)

National J2J Rates

Job-to-Job Accessions (Seasonally Adjusted)

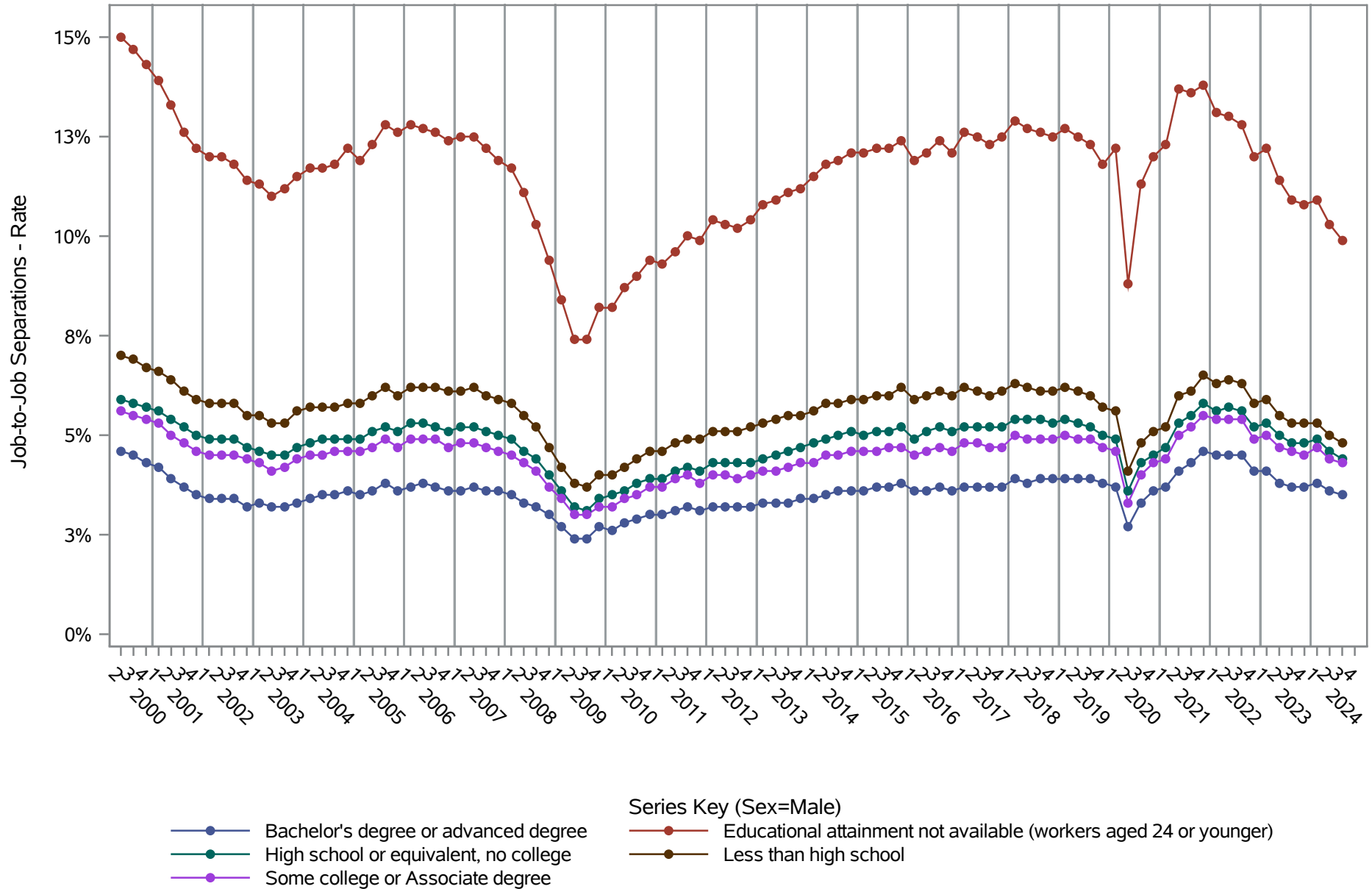
by Sex and Education (2 of 2) Sex=Female



Source: United States Census Bureau, Job-to-Job Flow Statistics, Release R2025Q4 (Beta)

National J2J Rates

Job-to-Job Separations (Seasonally Adjusted) by Sex and Education (1 of 2) Sex=Male

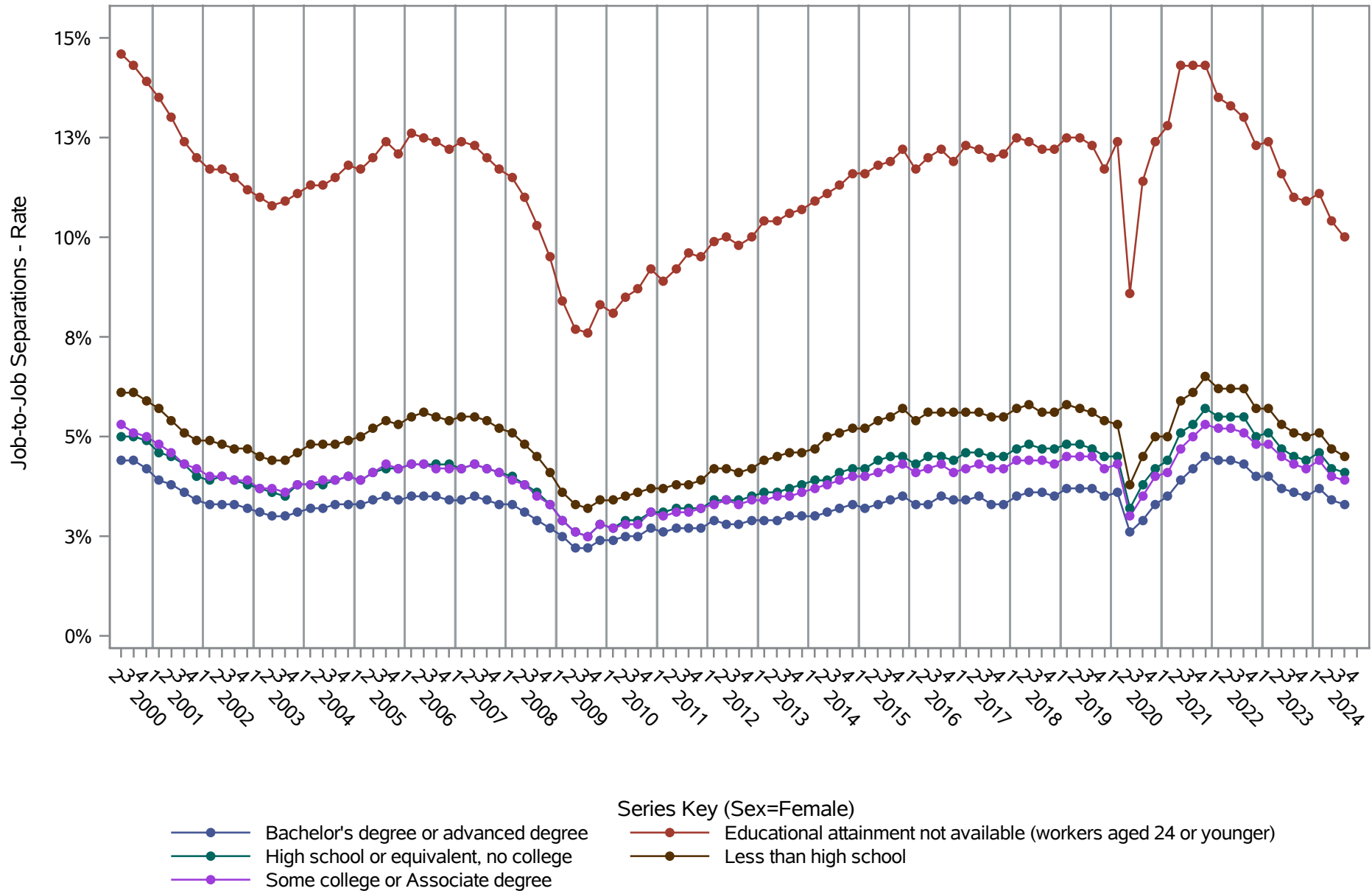


Source: United States Census Bureau, Job-to-Job Flow Statistics, Release R2025Q4 (Beta)

National J2J Rates

Job-to-Job Separations (Seasonally Adjusted)

by Sex and Education (2 of 2) Sex=Female

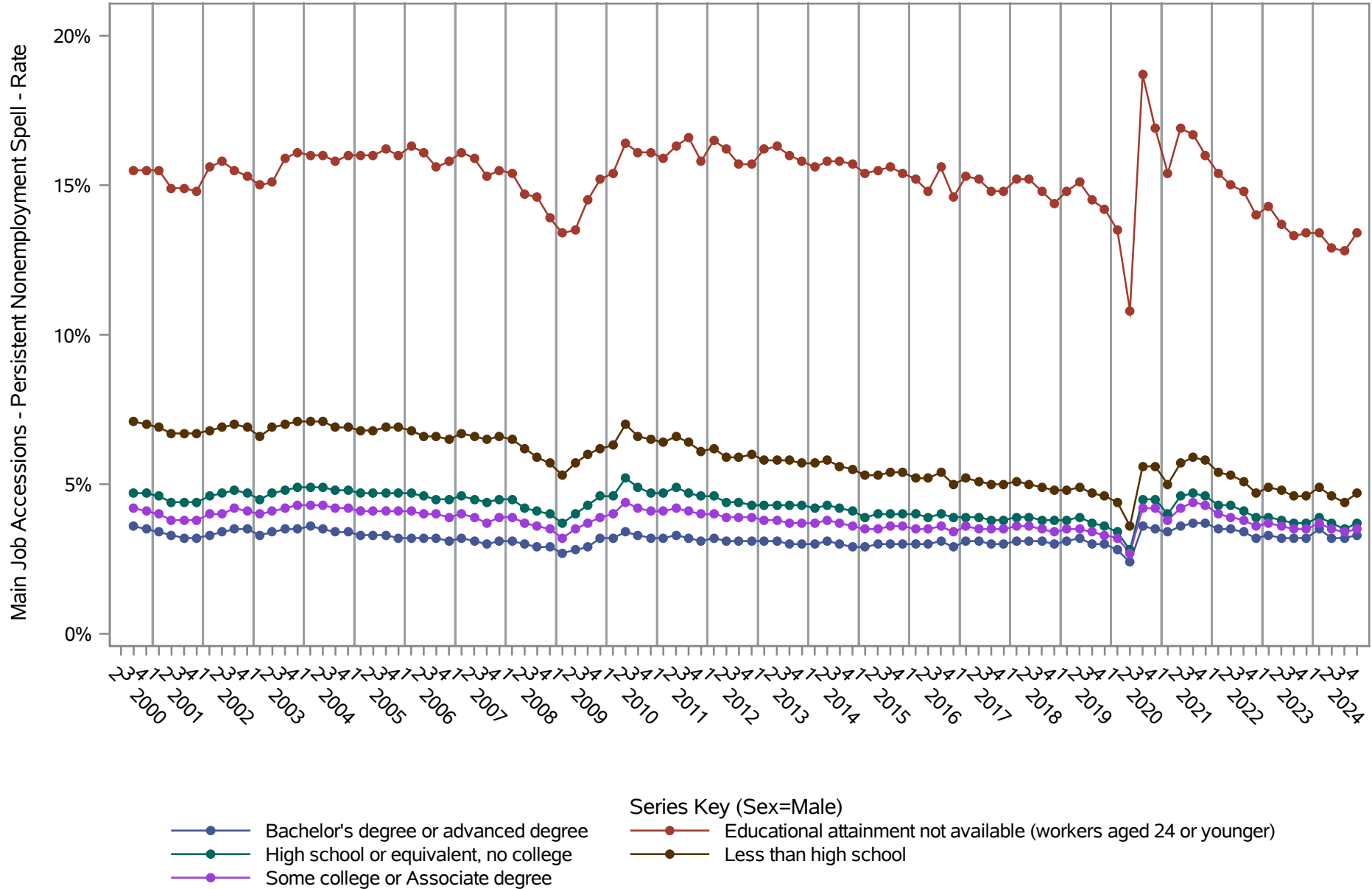


Source: United States Census Bureau, Job-to-Job Flow Statistics, Release R2025Q4 (Beta)

National J2J Rates

Main Job Accessions - Persistent Nonemployment Spell (Seasonally Adjusted)

by Sex and Education (1 of 2) Sex=Male

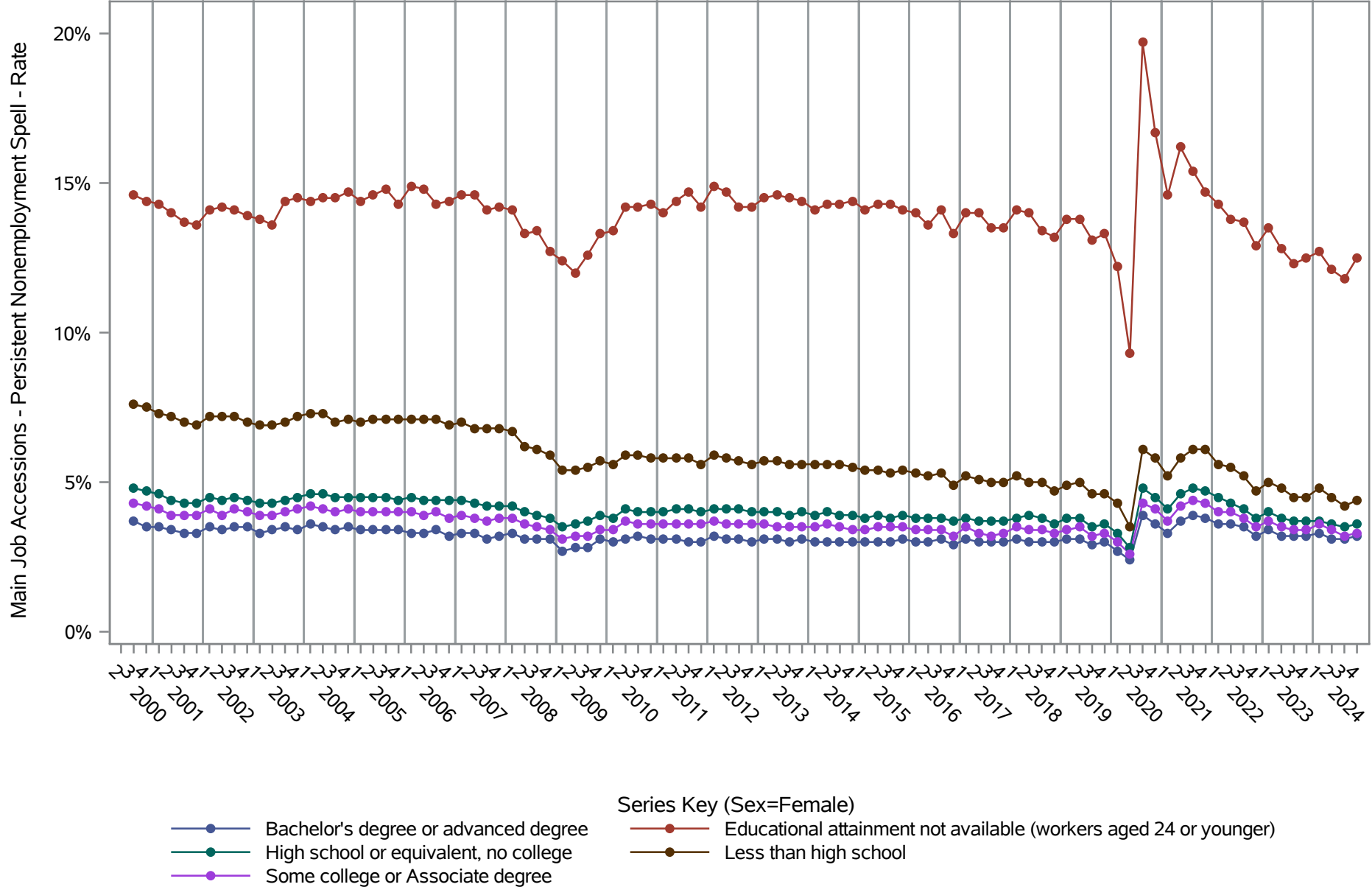


Source: United States Census Bureau, Job-to-Job Flow Statistics, Release R2025Q4 (Beta)

National J2J Rates

Main Job Accessions - Persistent Nonemployment Spell (Seasonally Adjusted)

by Sex and Education (2 of 2) Sex=Female

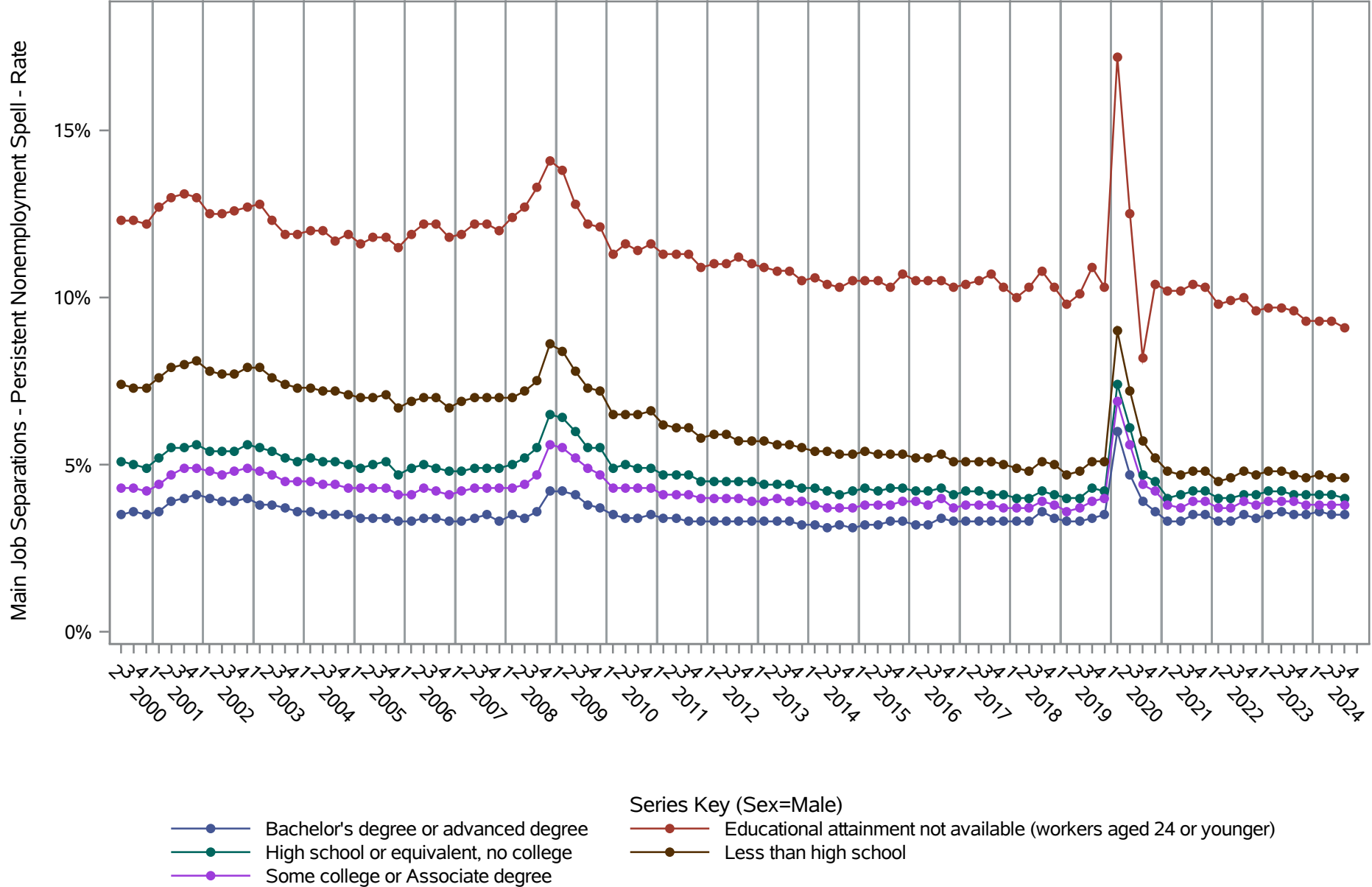


Source: United States Census Bureau, Job-to-Job Flow Statistics, Release R2025Q4 (Beta)

National J2J Rates

Main Job Separations - Persistent Nonemployment Spell (Seasonally Adjusted)

by Sex and Education (1 of 2) Sex=Male

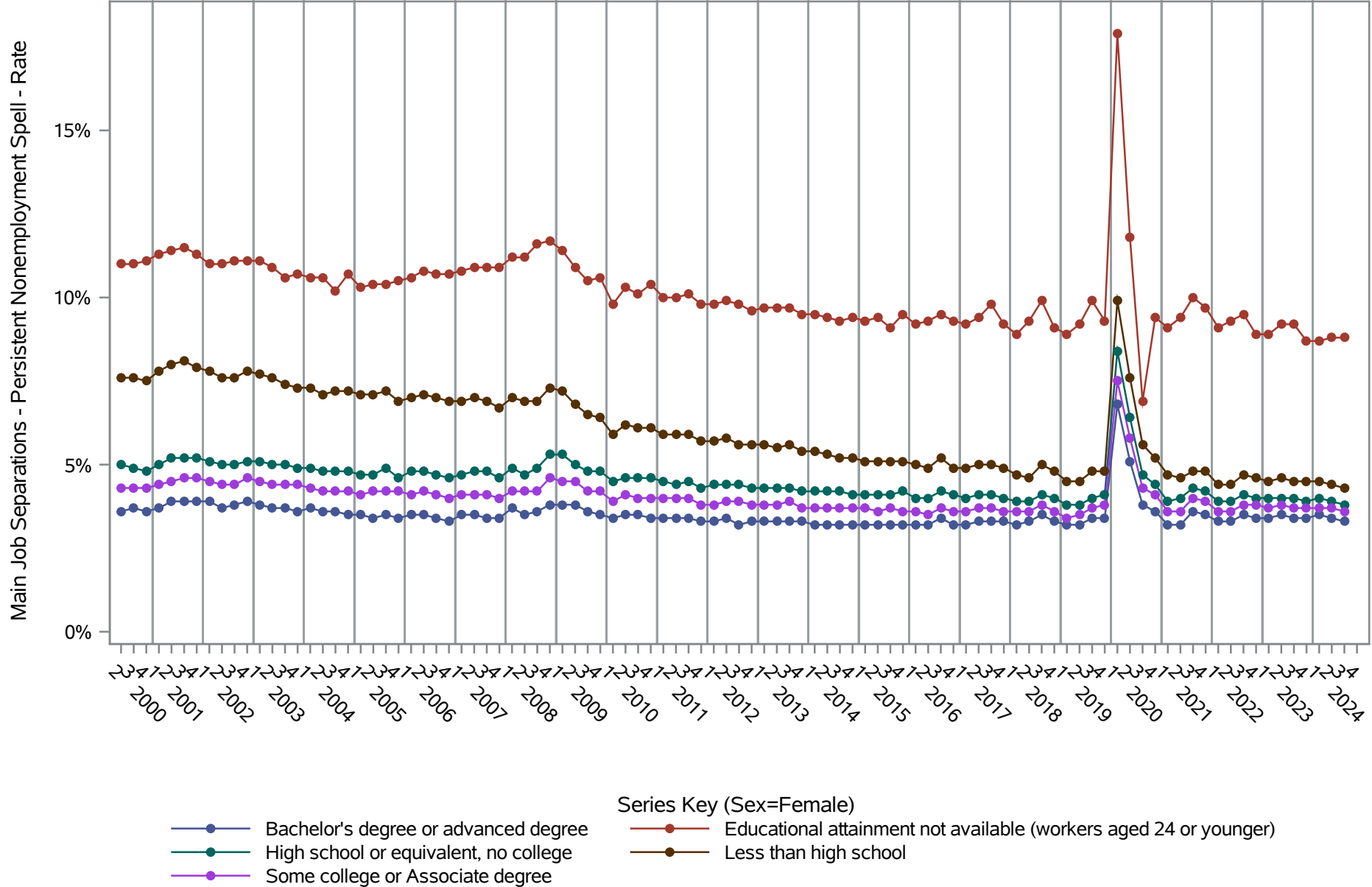


Source: United States Census Bureau, Job-to-Job Flow Statistics, Release R2025Q4 (Beta)

National J2J Rates

Main Job Separations - Persistent Nonemployment Spell (Seasonally Adjusted)

by Sex and Education (2 of 2) Sex=Female

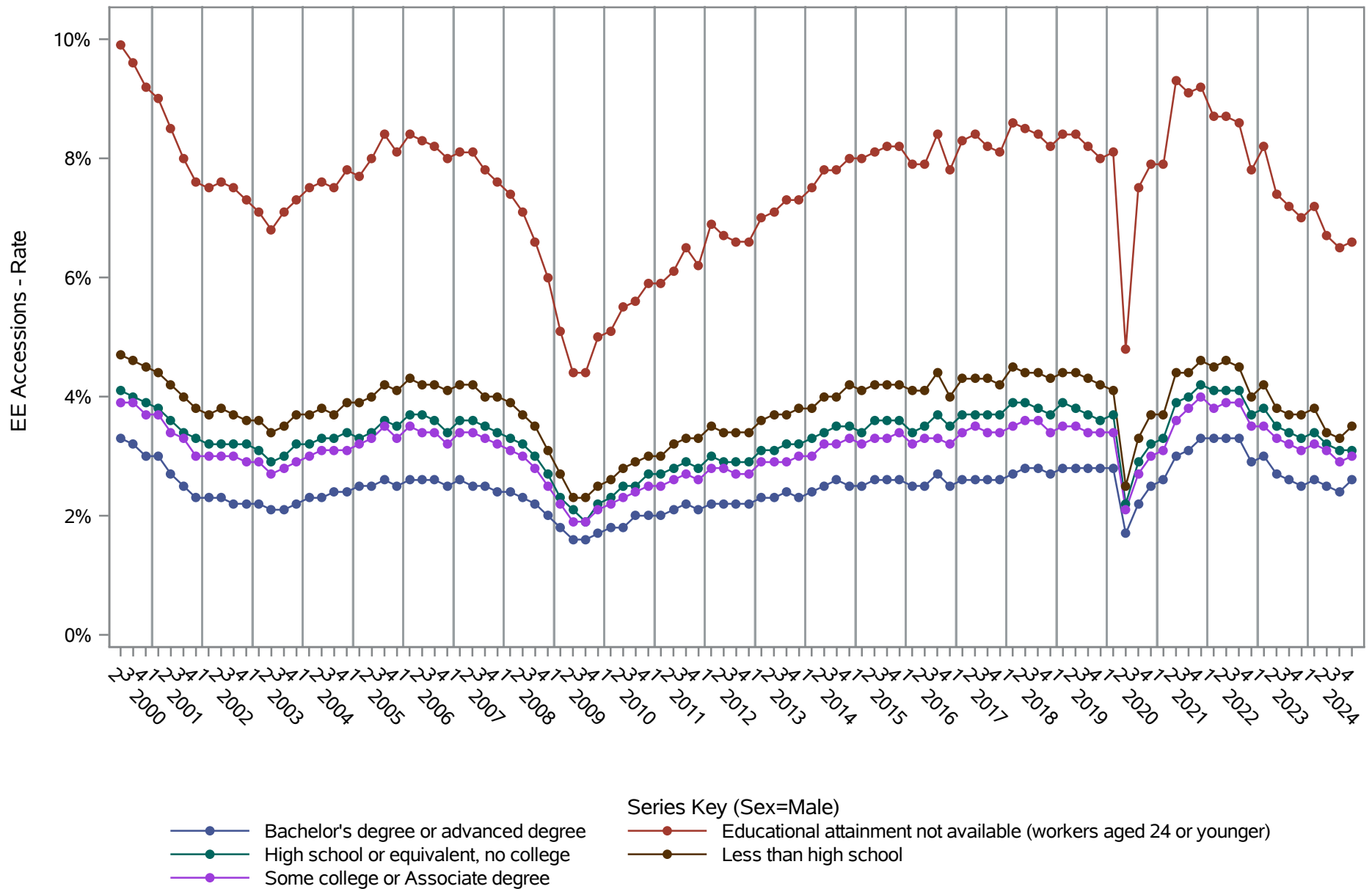


Source: United States Census Bureau, Job-to-Job Flow Statistics, Release R2025Q4 (Beta)

National J2J Rates

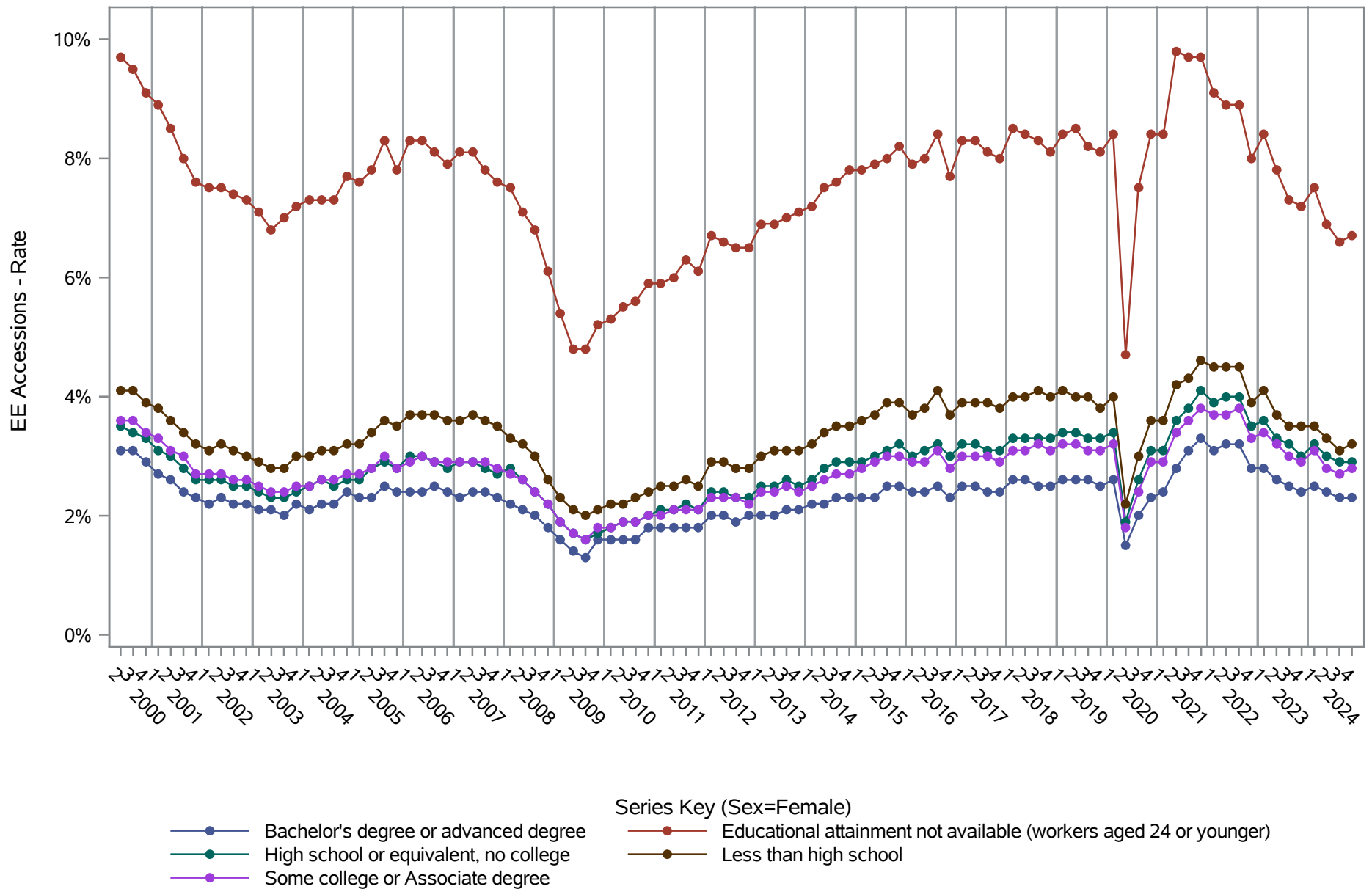
EE Accessions (Seasonally Adjusted)

by Sex and Education (1 of 2) Sex=Male



Source: United States Census Bureau, Job-to-Job Flow Statistics, Release R2025Q4 (Beta)

National J2J Rates
EE Accessions (Seasonally Adjusted)
by Sex and Education (2 of 2) Sex=Female

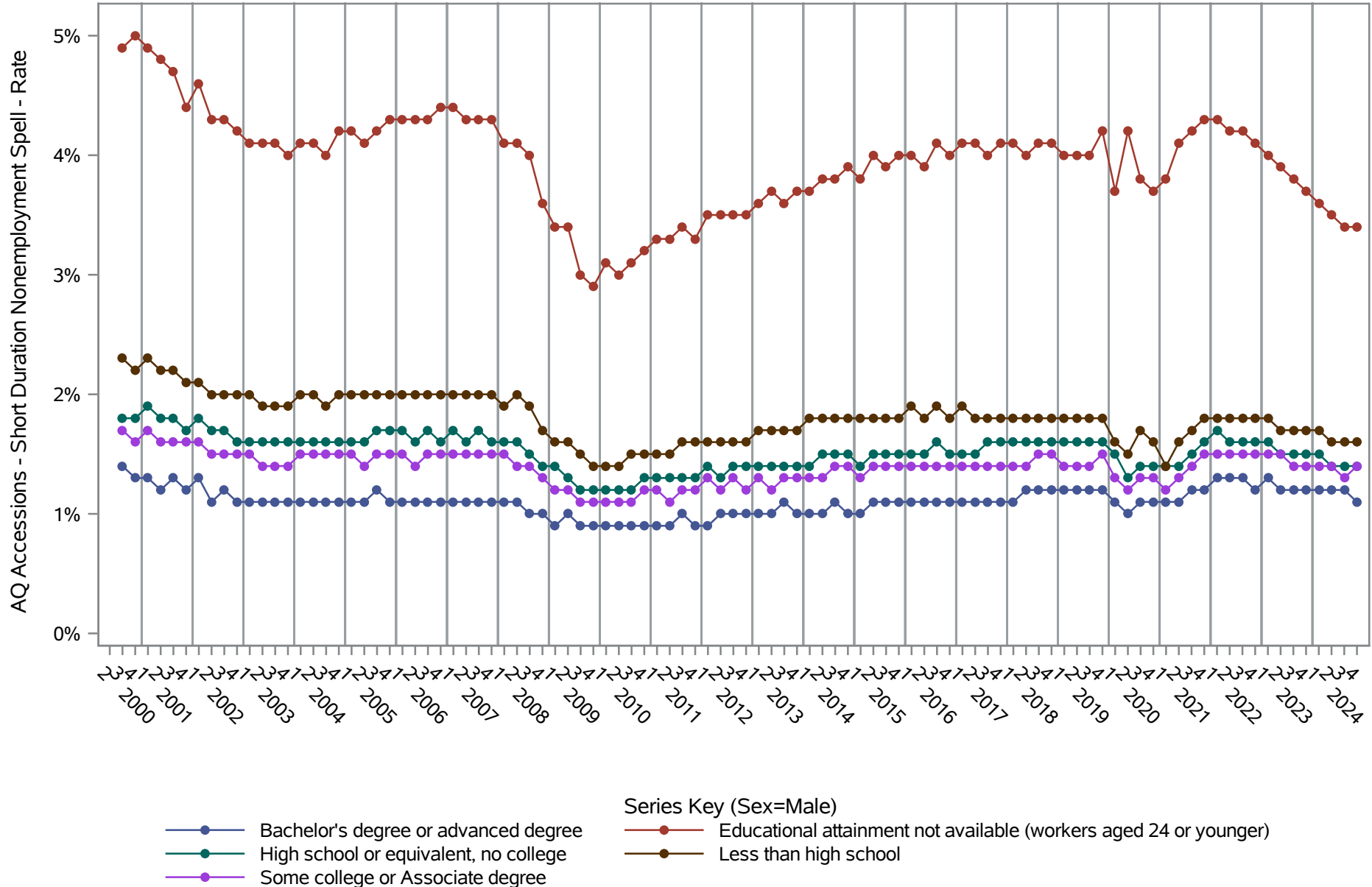


Source: United States Census Bureau, Job-to-Job Flow Statistics, Release R2025Q4 (Beta)

National J2J Rates

AQ Accessions - Short Duration Nonemployment Spell (Seasonally Adjusted)

by Sex and Education (1 of 2) Sex=Male

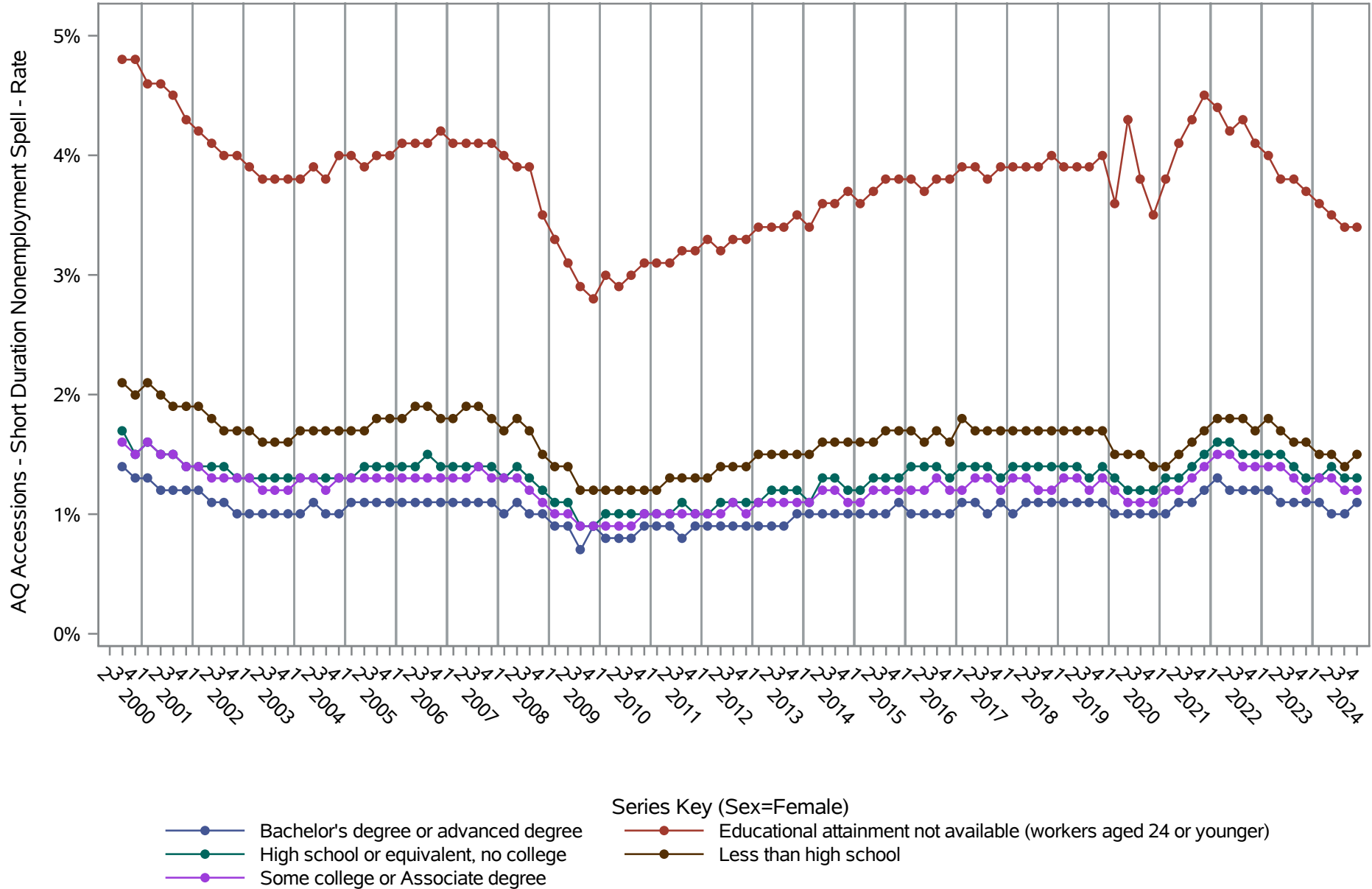


Source: United States Census Bureau, Job-to-Job Flow Statistics, Release R2025Q4 (Beta)

National J2J Rates

AQ Accessions - Short Duration Nonemployment Spell (Seasonally Adjusted)

by Sex and Education (2 of 2) Sex=Female

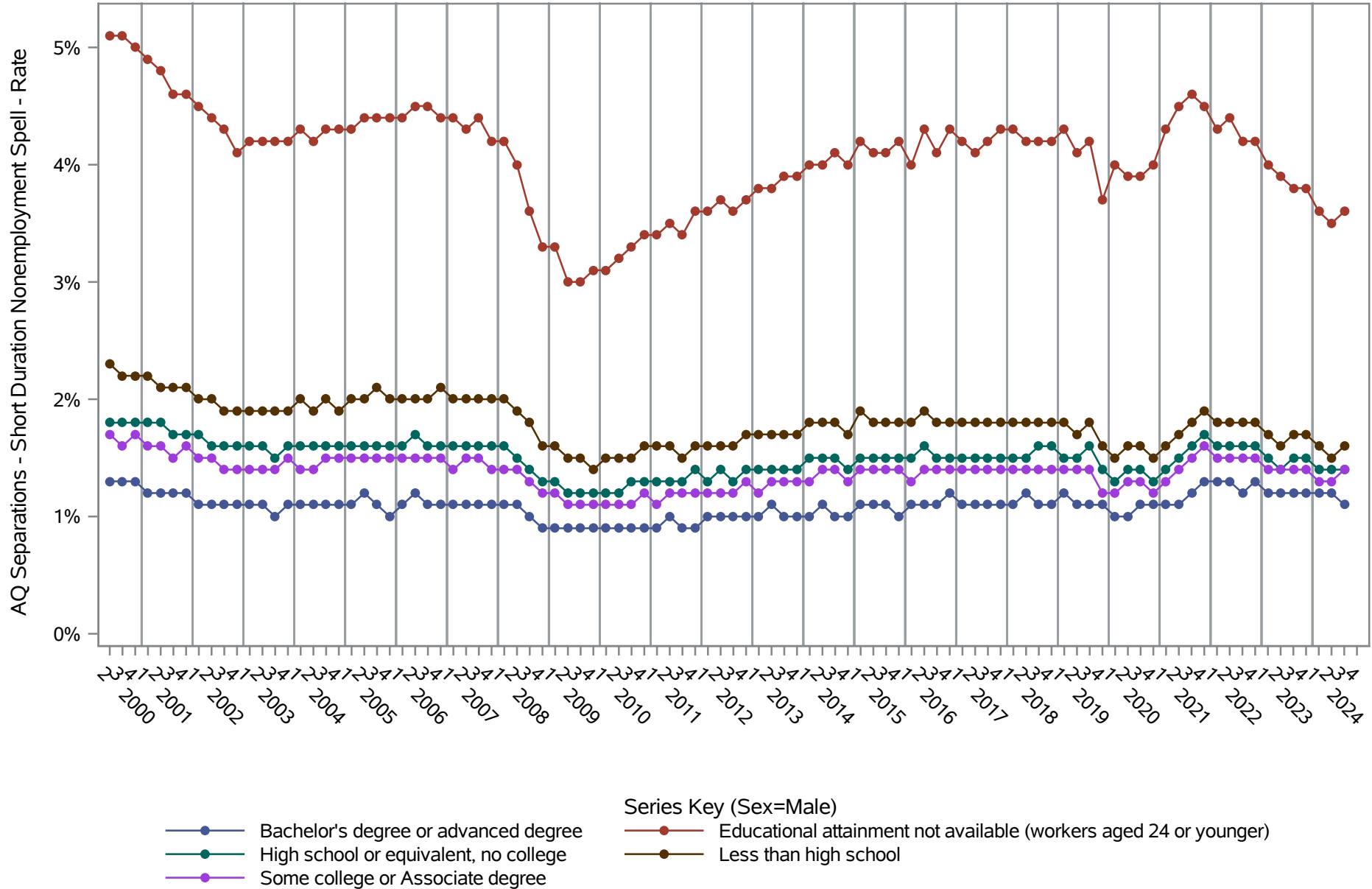


Source: United States Census Bureau, Job-to-Job Flow Statistics, Release R2025Q4 (Beta)

National J2J Rates

AQ Separations - Short Duration Nonemployment Spell (Seasonally Adjusted)

by Sex and Education (1 of 2) Sex=Male

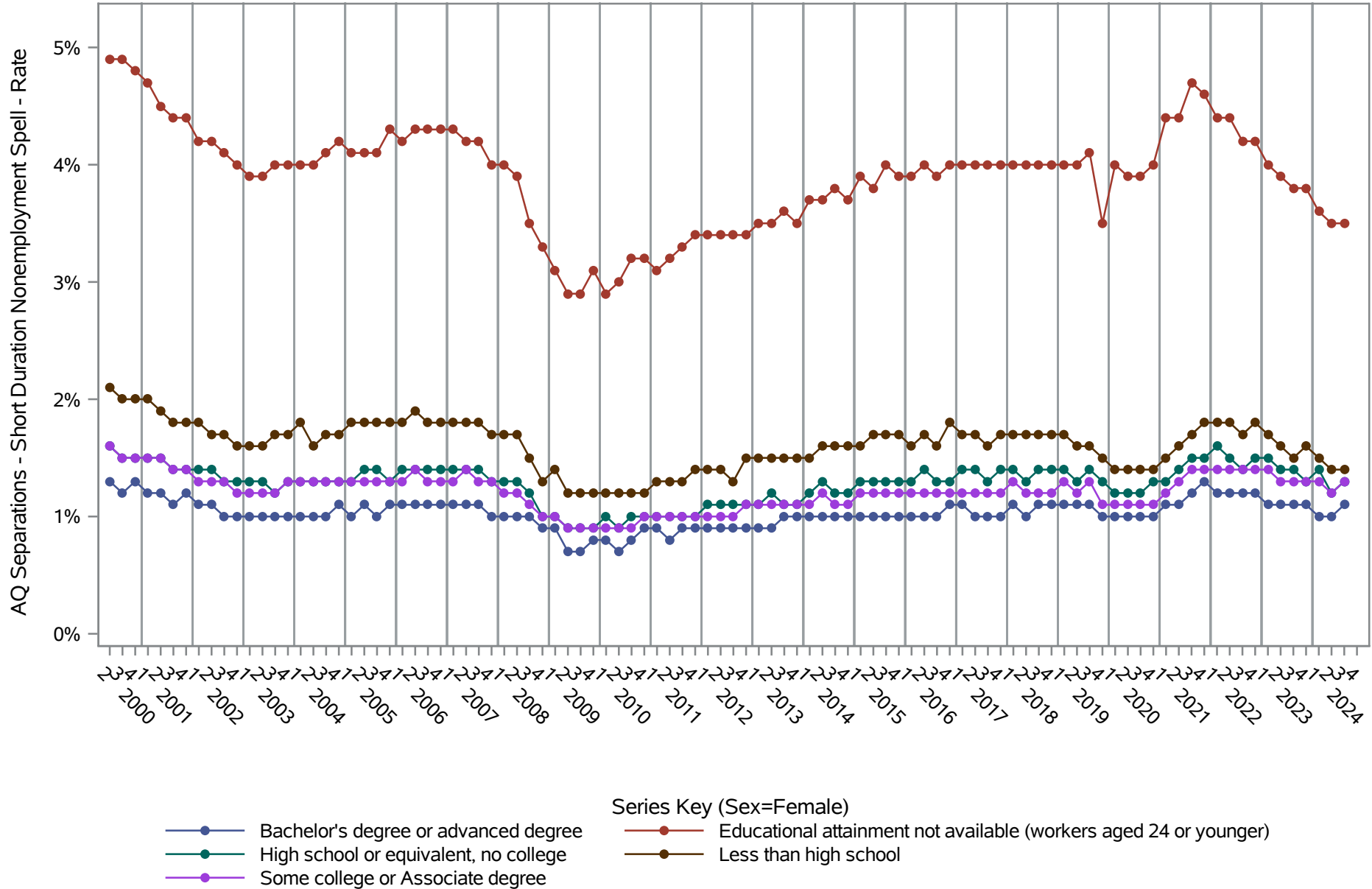


Source: United States Census Bureau, Job-to-Job Flow Statistics, Release R2025Q4 (Beta)

National J2J Rates

AQ Separations - Short Duration Nonemployment Spell (Seasonally Adjusted)

by Sex and Education (2 of 2) Sex=Female



Source: United States Census Bureau, Job-to-Job Flow Statistics, Release R2025Q4 (Beta)