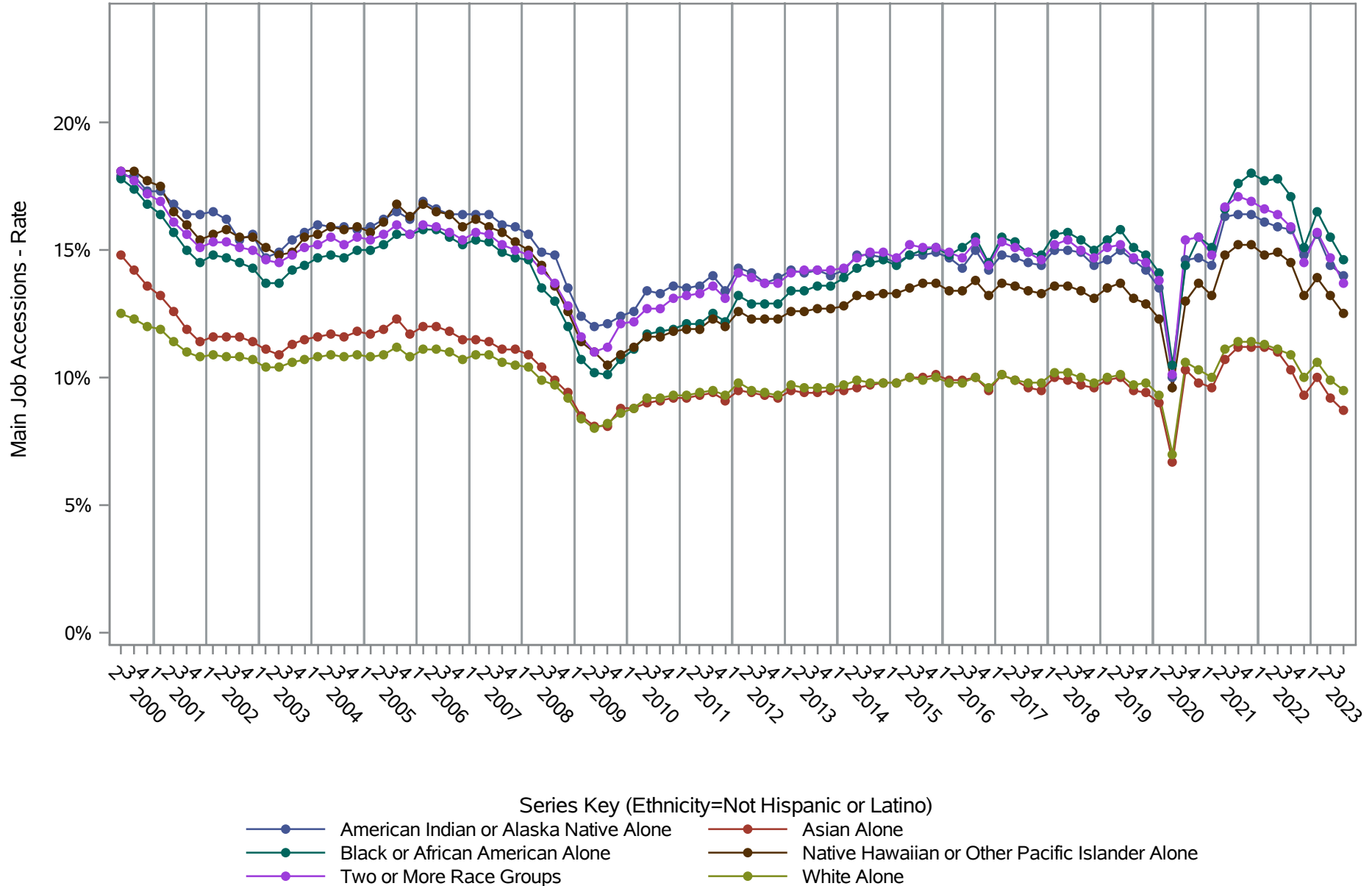


National J2J Rates

Main Job Accessions (Seasonally Adjusted)

by Race and Ethnicity (1 of 2) Ethnicity=Not Hispanic or Latino

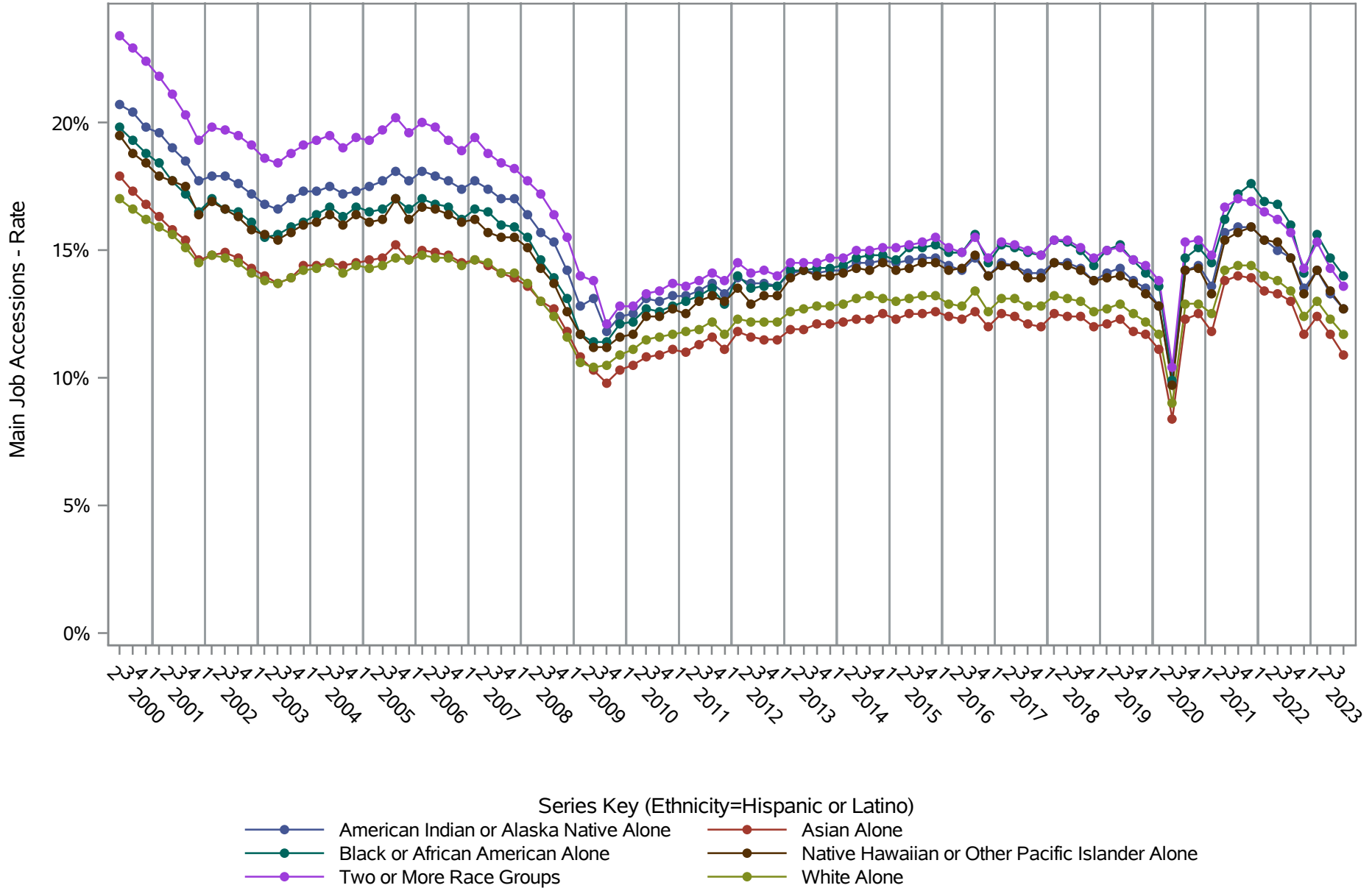


Source: United States Census Bureau, Job-to-Job Flow Statistics, Release R2024Q3 (Beta)

National J2J Rates

Main Job Accessions (Seasonally Adjusted)

by Race and Ethnicity (2 of 2) Ethnicity=Hispanic or Latino

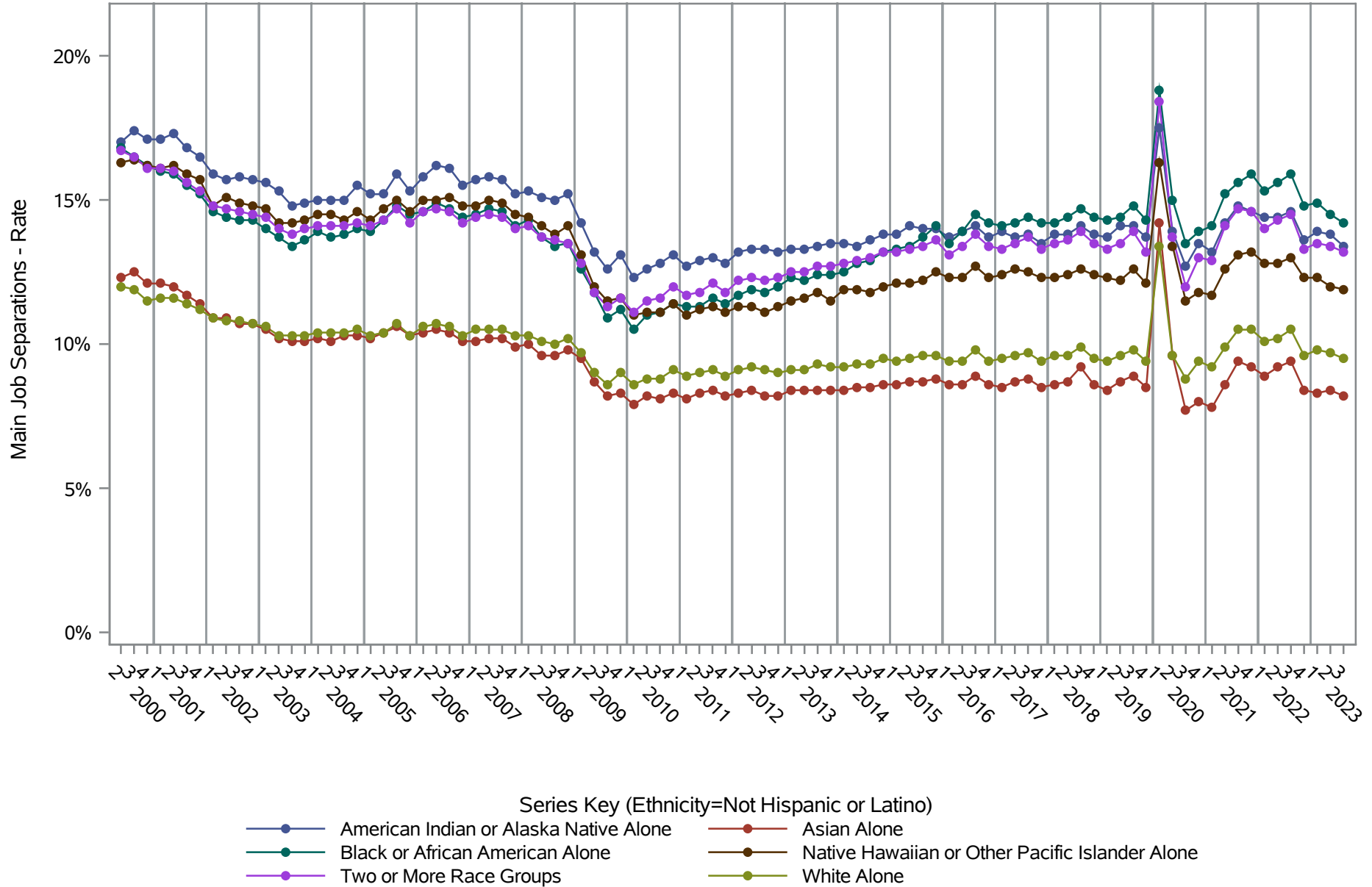


Source: United States Census Bureau, Job-to-Job Flow Statistics, Release R2024Q3 (Beta)

National J2J Rates

Main Job Separations (Seasonally Adjusted)

by Race and Ethnicity (1 of 2) Ethnicity=Not Hispanic or Latino

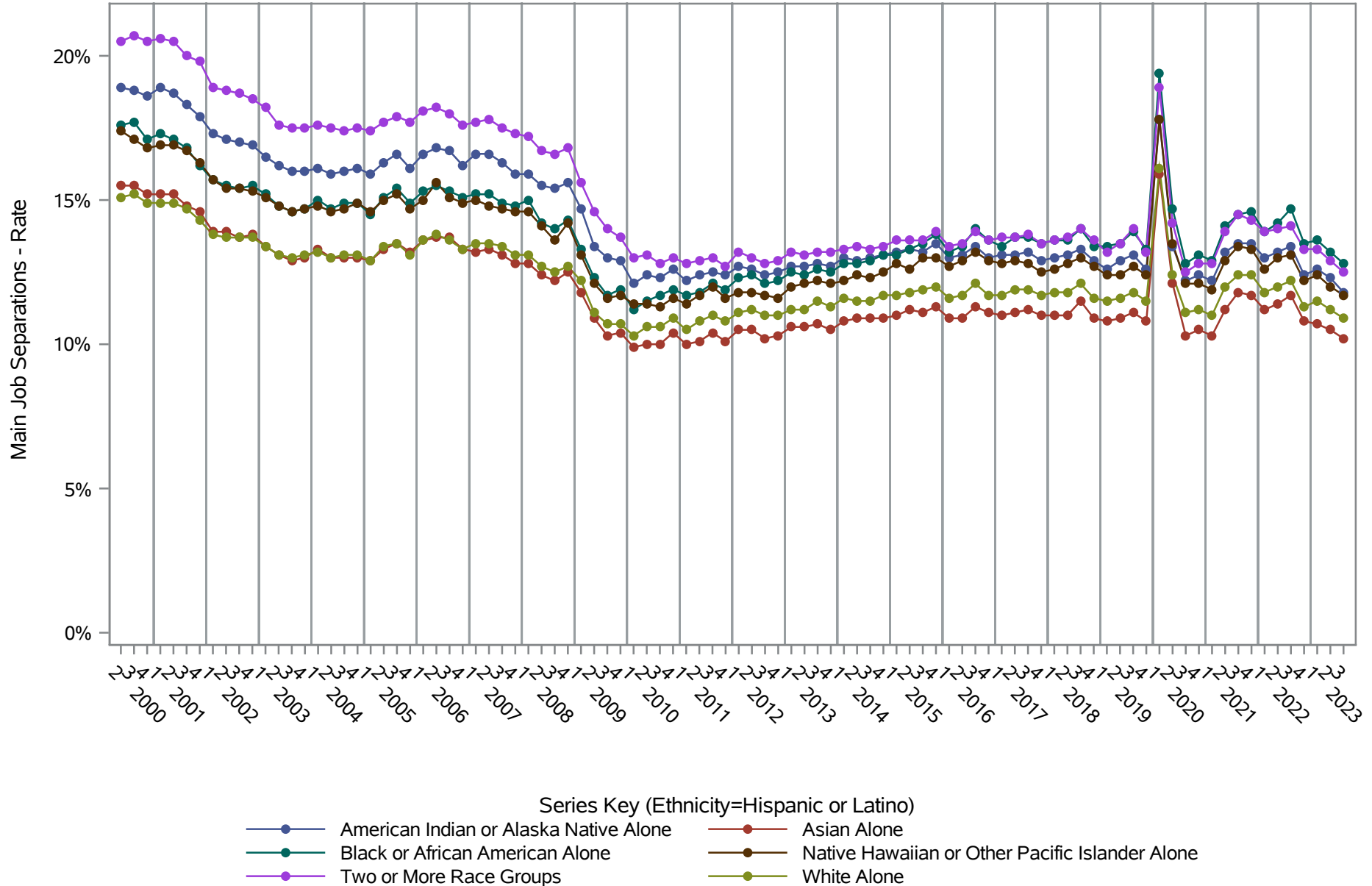


Source: United States Census Bureau, Job-to-Job Flow Statistics, Release R2024Q3 (Beta)

National J2J Rates

Main Job Separations (Seasonally Adjusted)

by Race and Ethnicity (2 of 2) Ethnicity=Hispanic or Latino

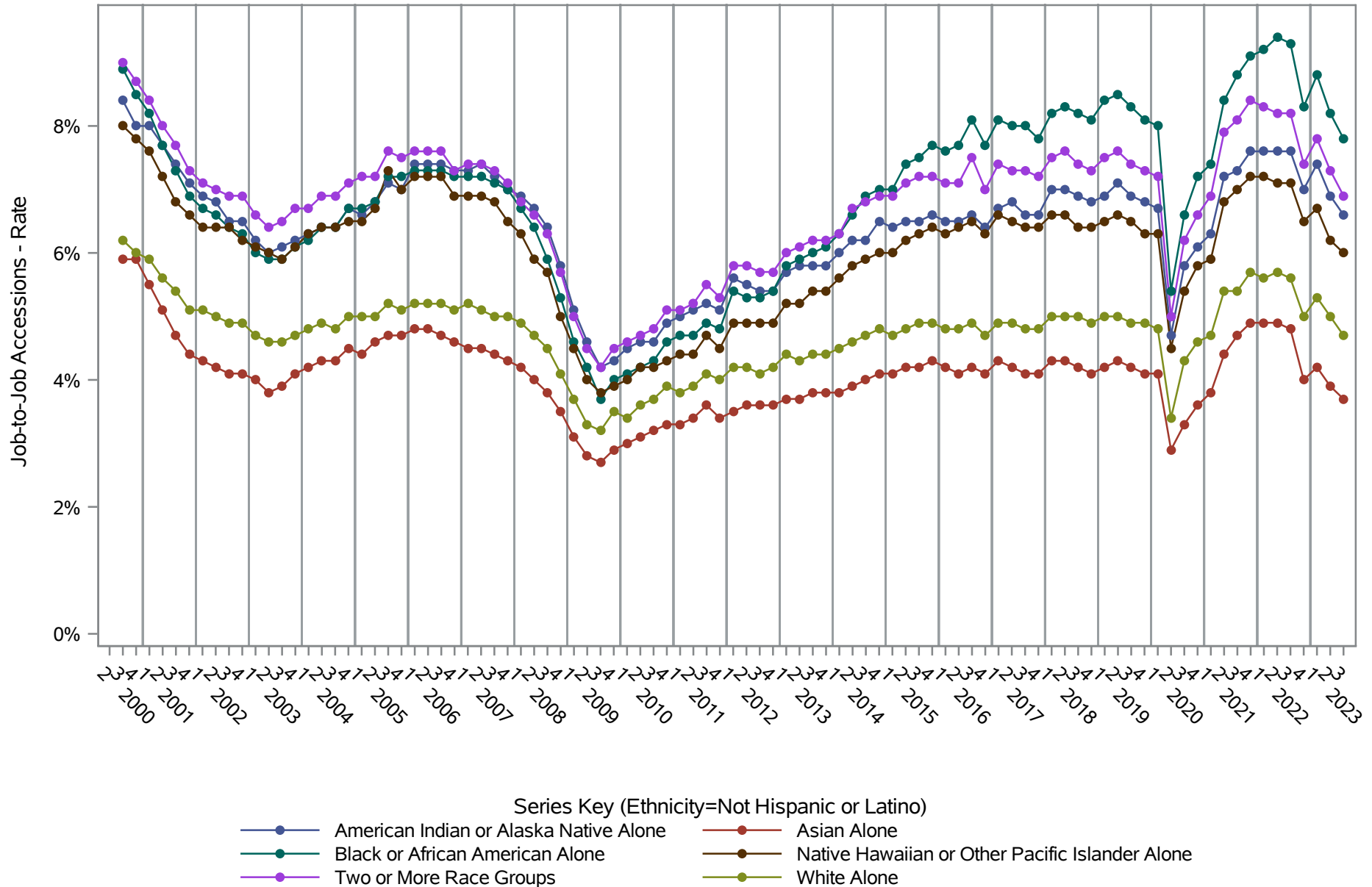


Source: United States Census Bureau, Job-to-Job Flow Statistics, Release R2024Q3 (Beta)

National J2J Rates

Job-to-Job Accessions (Seasonally Adjusted)

by Race and Ethnicity (1 of 2) Ethnicity=Not Hispanic or Latino

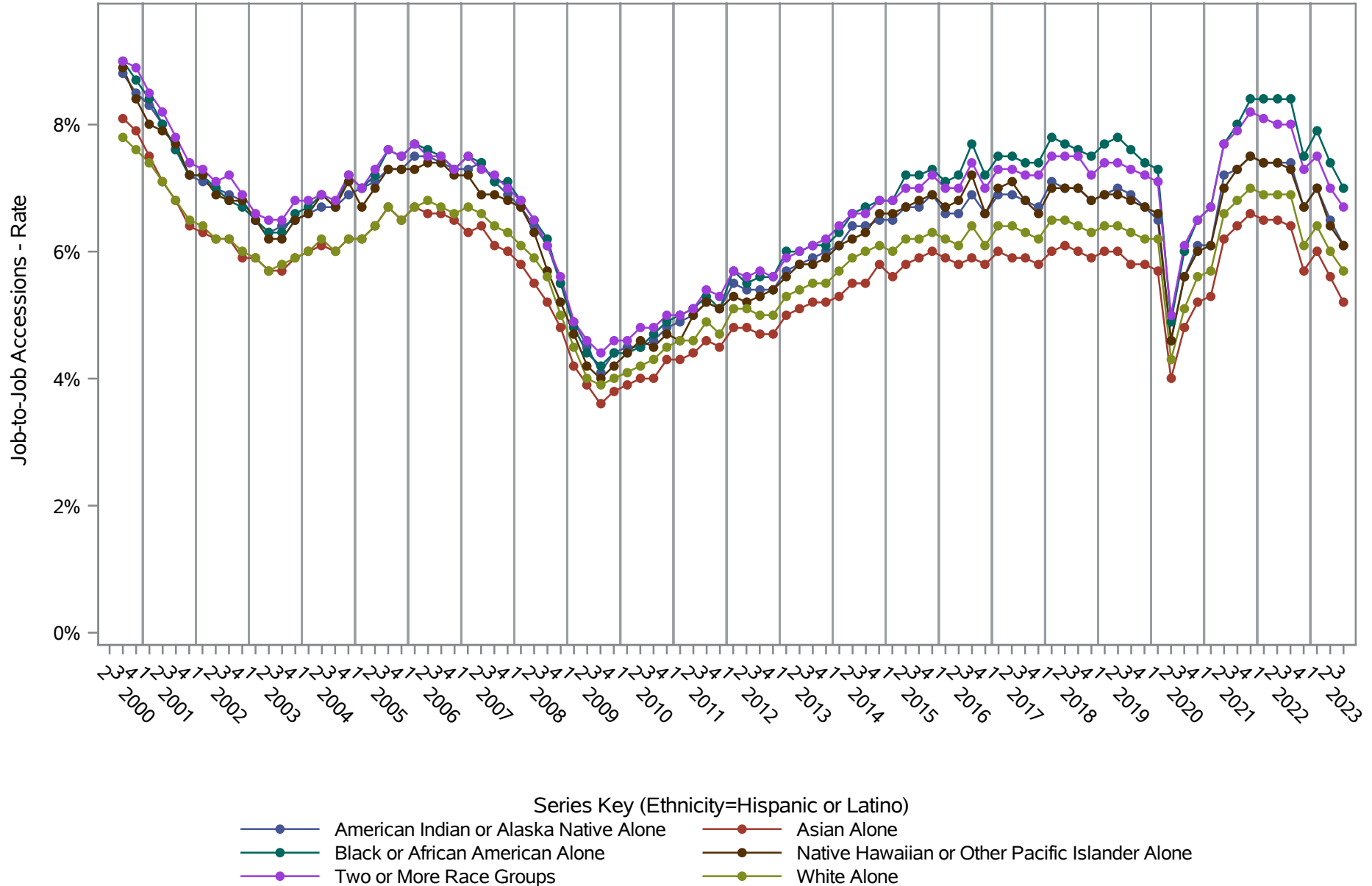


Source: United States Census Bureau, Job-to-Job Flow Statistics, Release R2024Q3 (Beta)

National J2J Rates

Job-to-Job Accessions (Seasonally Adjusted)

by Race and Ethnicity (2 of 2) Ethnicity=Hispanic or Latino

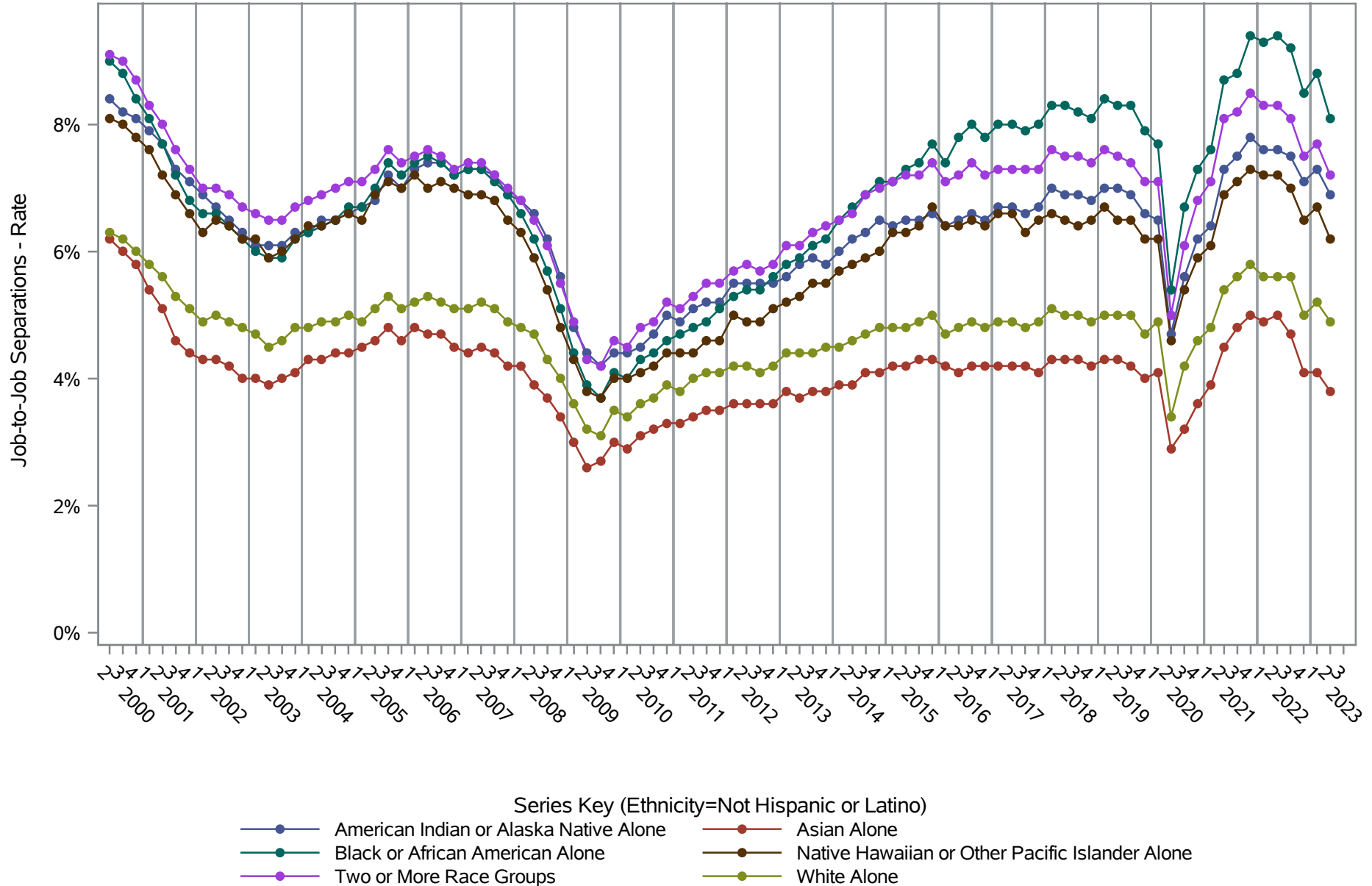


Source: United States Census Bureau, Job-to-Job Flow Statistics, Release R2024Q3 (Beta)

National J2J Rates

Job-to-Job Separations (Seasonally Adjusted)

by Race and Ethnicity (1 of 2) Ethnicity=Not Hispanic or Latino

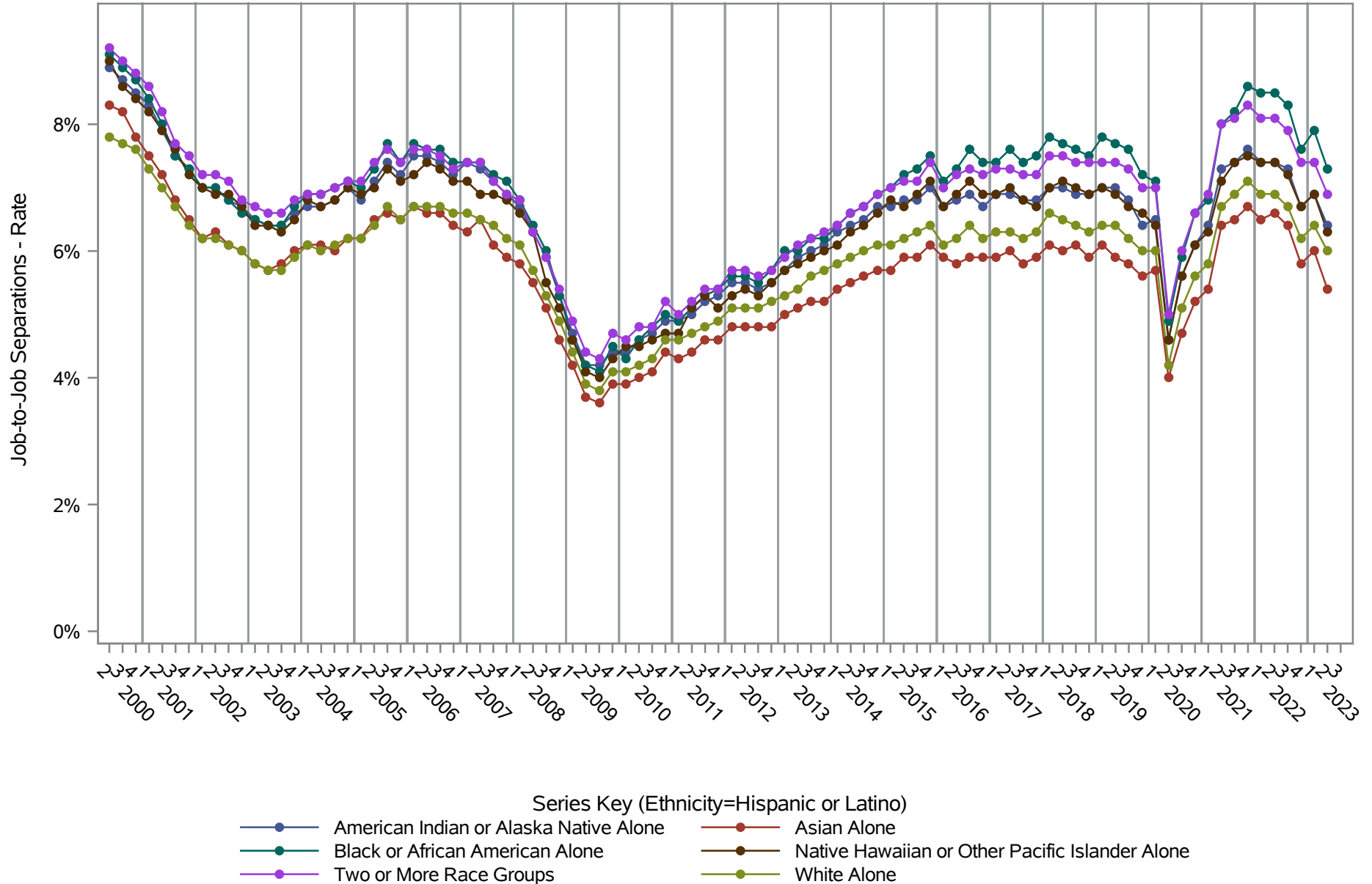


Source: United States Census Bureau, Job-to-Job Flow Statistics, Release R2024Q3 (Beta)

National J2J Rates

Job-to-Job Separations (Seasonally Adjusted)

by Race and Ethnicity (2 of 2) Ethnicity=Hispanic or Latino

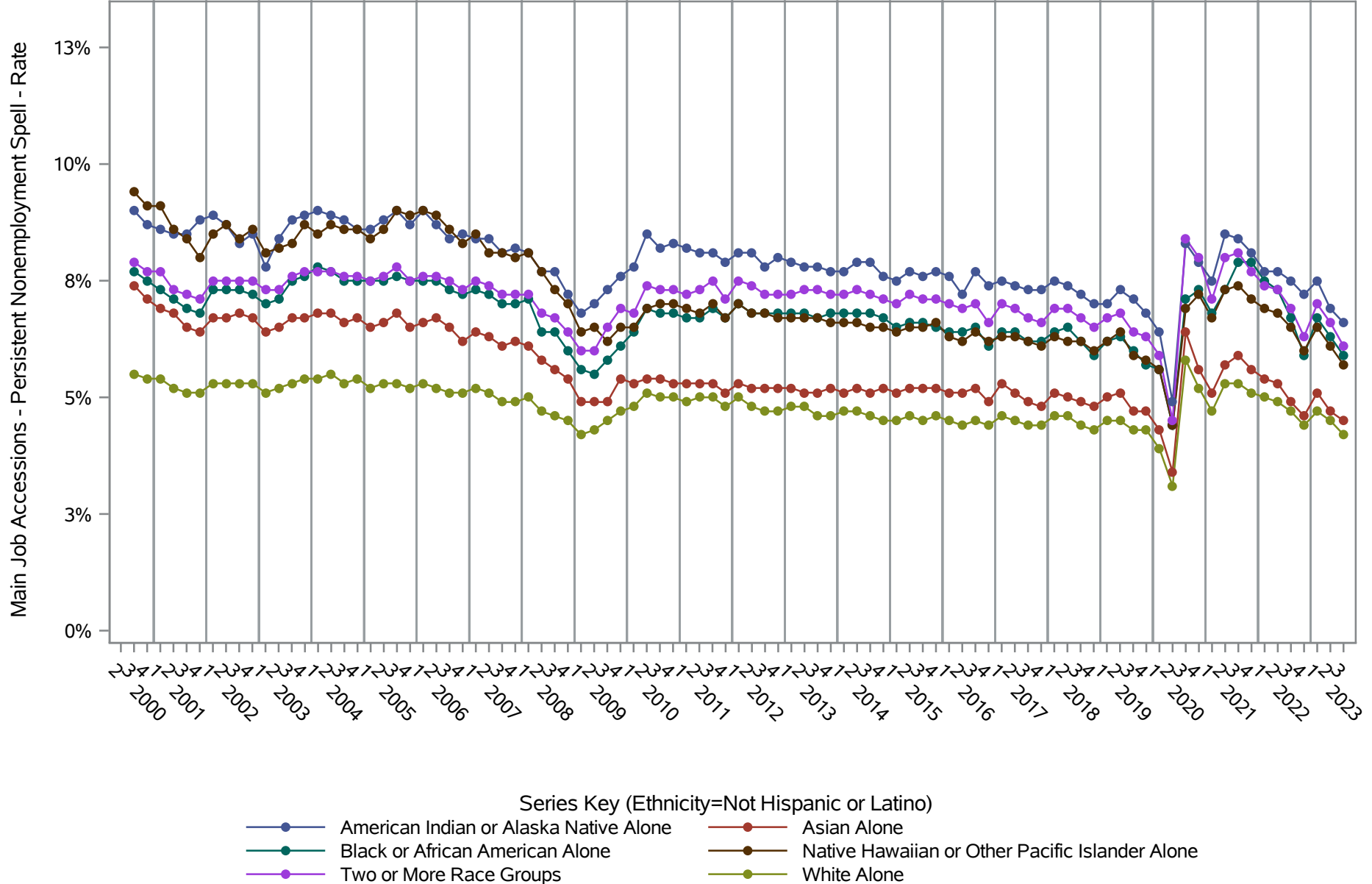


Source: United States Census Bureau, Job-to-Job Flow Statistics, Release R2024Q3 (Beta)

National J2J Rates

Main Job Accessions - Persistent Nonemployment Spell (Seasonally Adjusted)

by Race and Ethnicity (1 of 2) Ethnicity=Not Hispanic or Latino

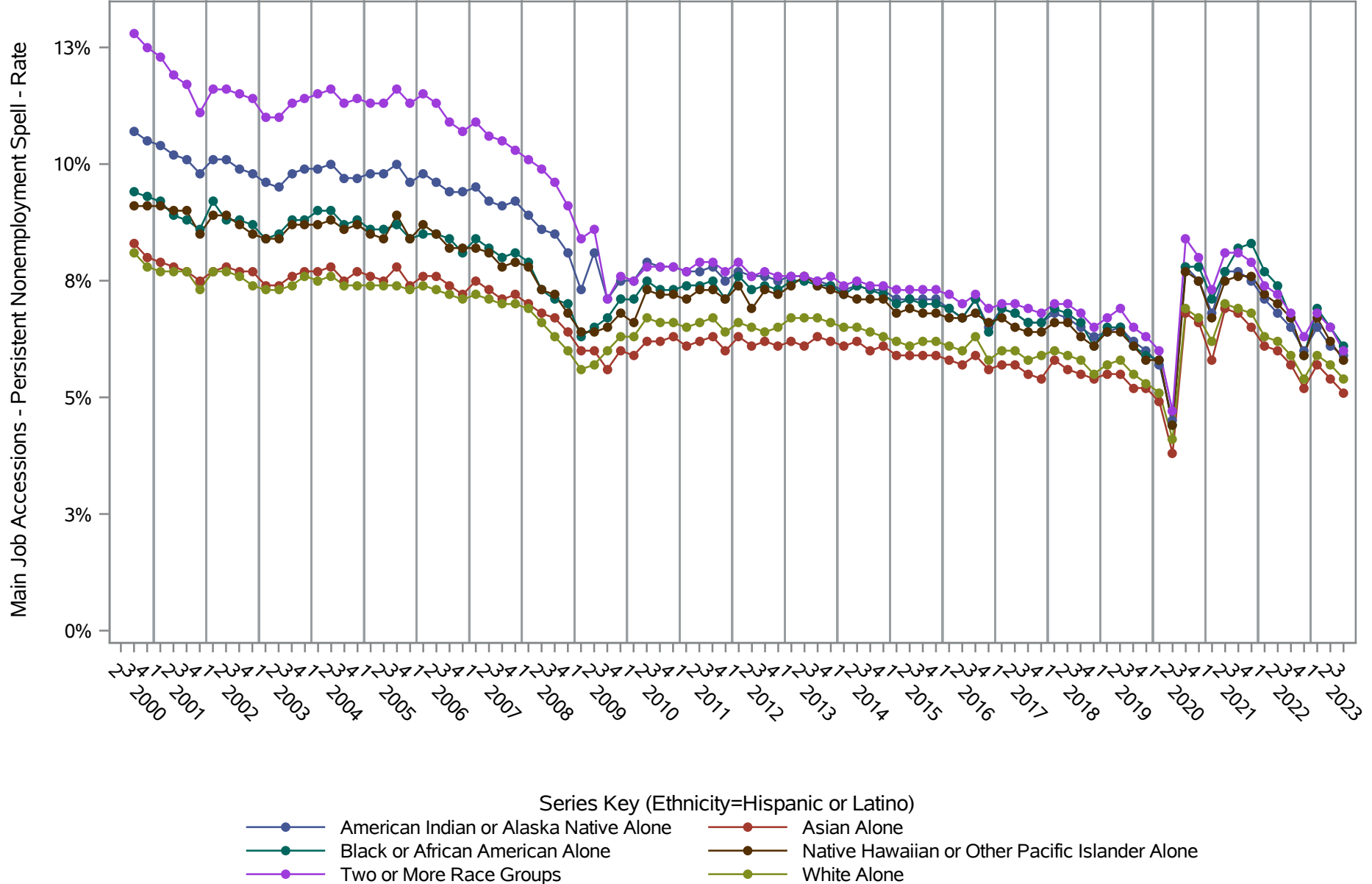


Source: United States Census Bureau, Job-to-Job Flow Statistics, Release R2024Q3 (Beta)

National J2J Rates

Main Job Accessions - Persistent Nonemployment Spell (Seasonally Adjusted)

by Race and Ethnicity (2 of 2) Ethnicity=Hispanic or Latino

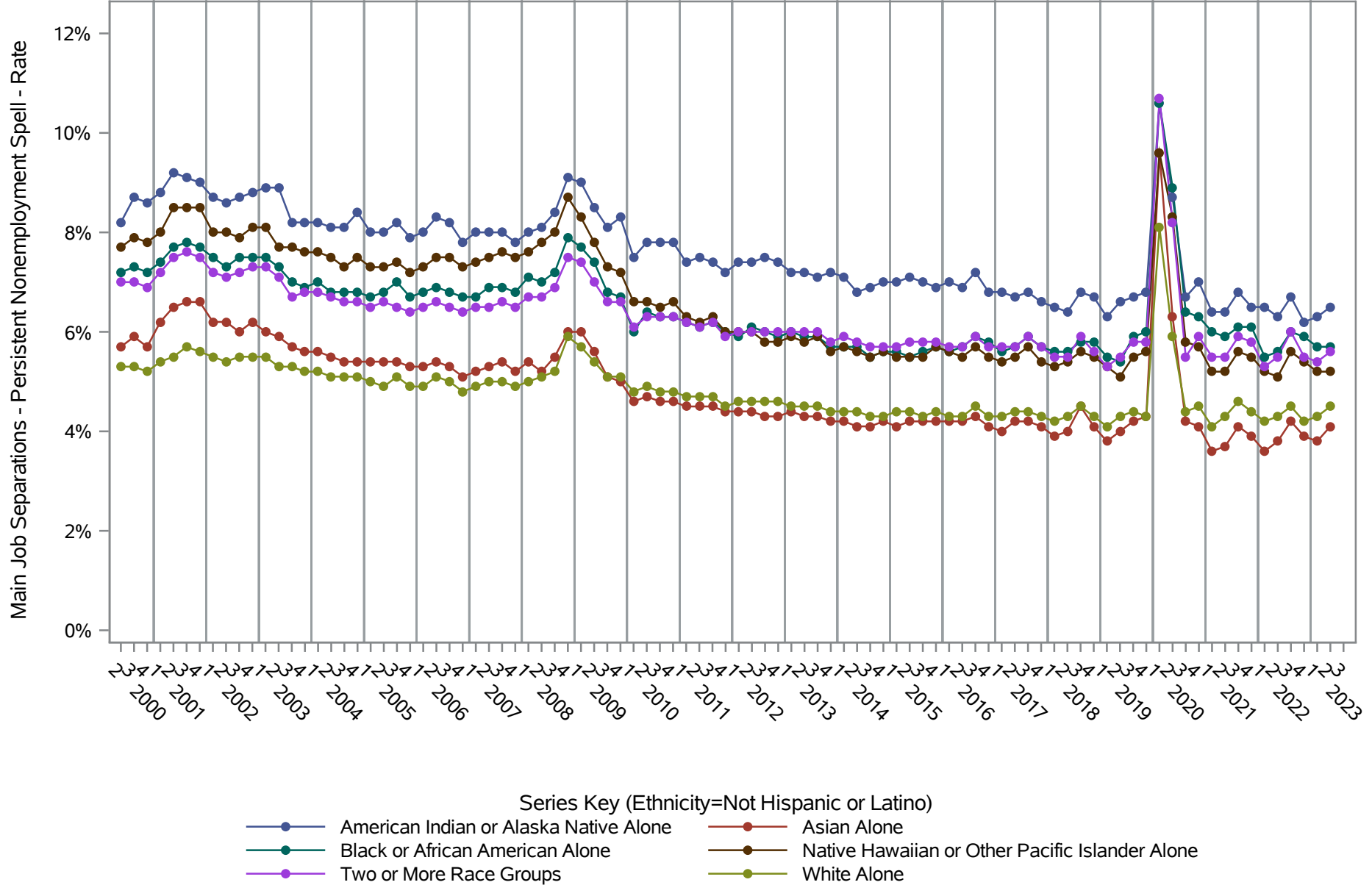


Source: United States Census Bureau, Job-to-Job Flow Statistics, Release R2024Q3 (Beta)

National J2J Rates

Main Job Separations - Persistent Nonemployment Spell (Seasonally Adjusted)

by Race and Ethnicity (1 of 2) Ethnicity=Not Hispanic or Latino

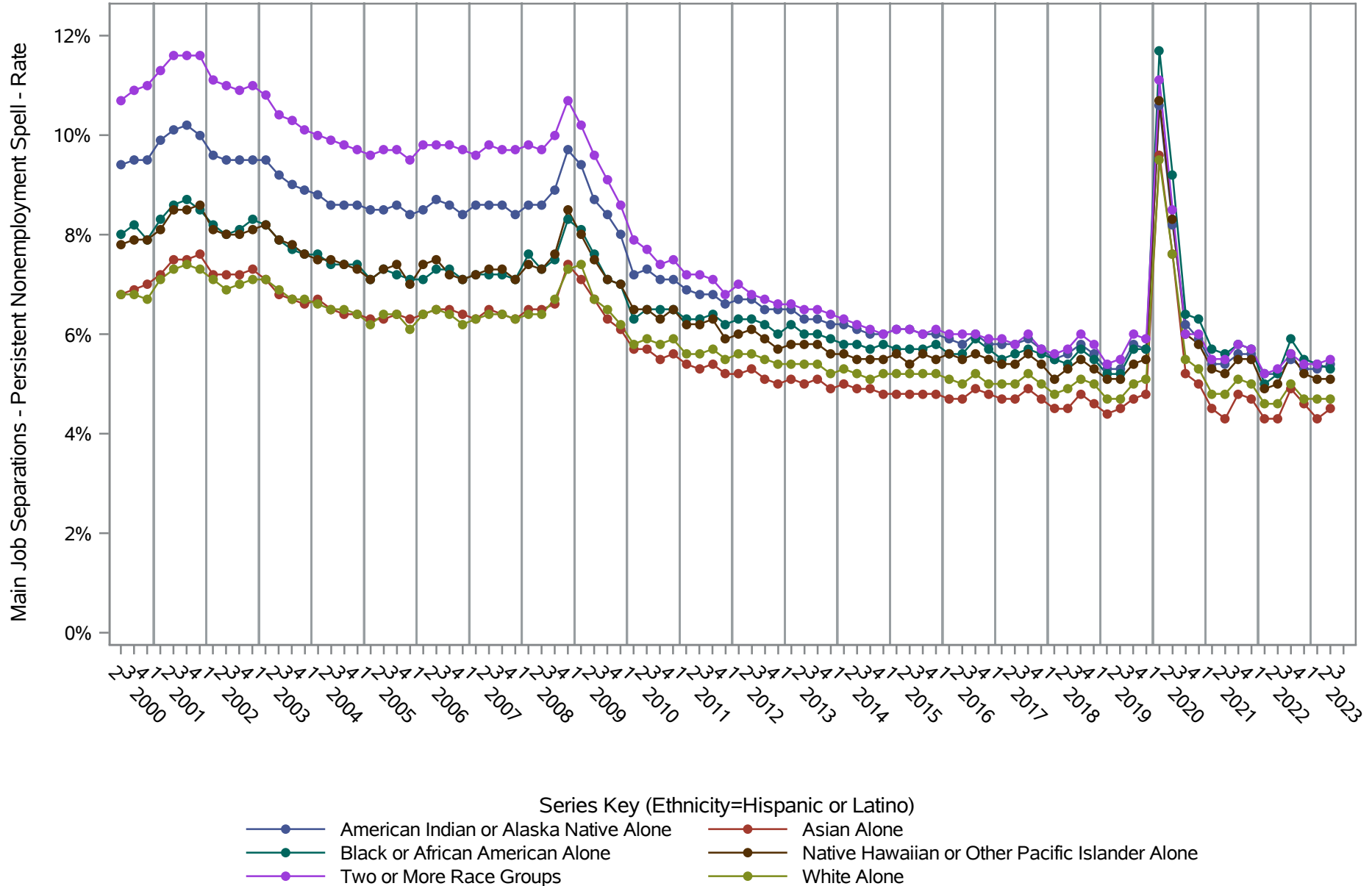


Source: United States Census Bureau, Job-to-Job Flow Statistics, Release R2024Q3 (Beta)

National J2J Rates

Main Job Separations - Persistent Nonemployment Spell (Seasonally Adjusted)

by Race and Ethnicity (2 of 2) Ethnicity=Hispanic or Latino

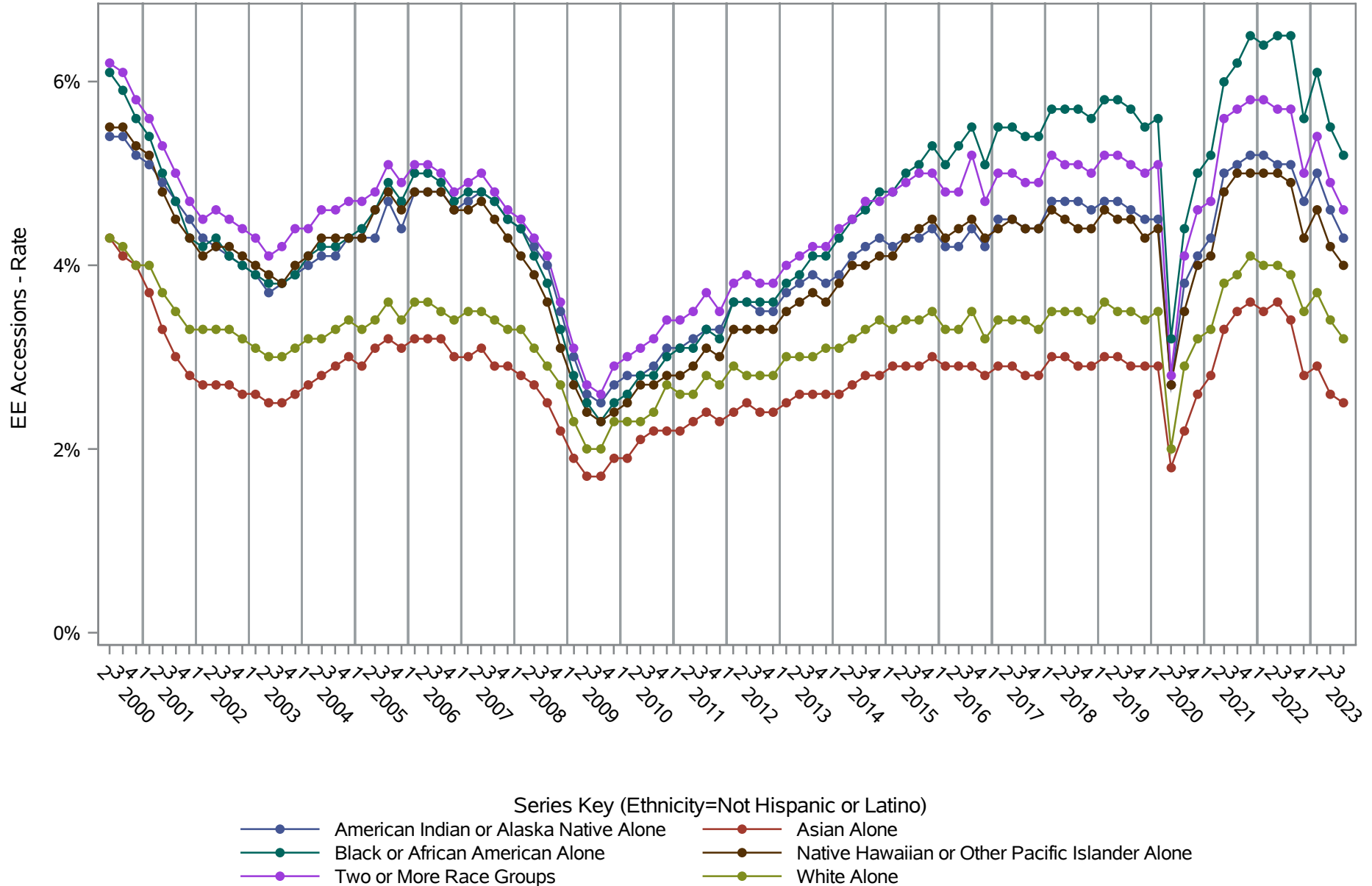


Source: United States Census Bureau, Job-to-Job Flow Statistics, Release R2024Q3 (Beta)

National J2J Rates

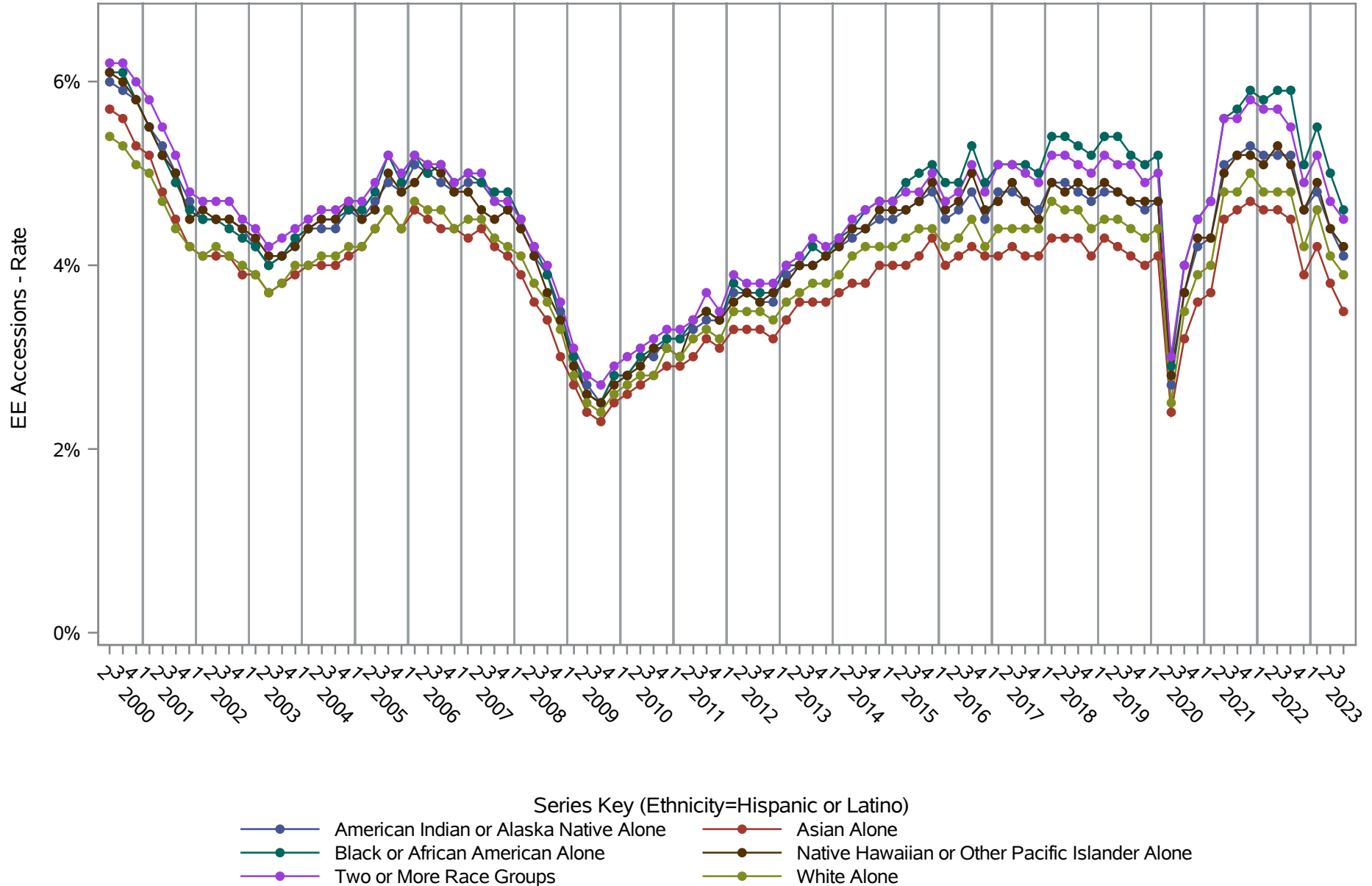
EE Accessions (Seasonally Adjusted)

by Race and Ethnicity (1 of 2) Ethnicity=Not Hispanic or Latino



Source: United States Census Bureau, Job-to-Job Flow Statistics, Release R2024Q3 (Beta)

National J2J Rates
EE Accessions (Seasonally Adjusted)
by Race and Ethnicity (2 of 2) Ethnicity=Hispanic or Latino

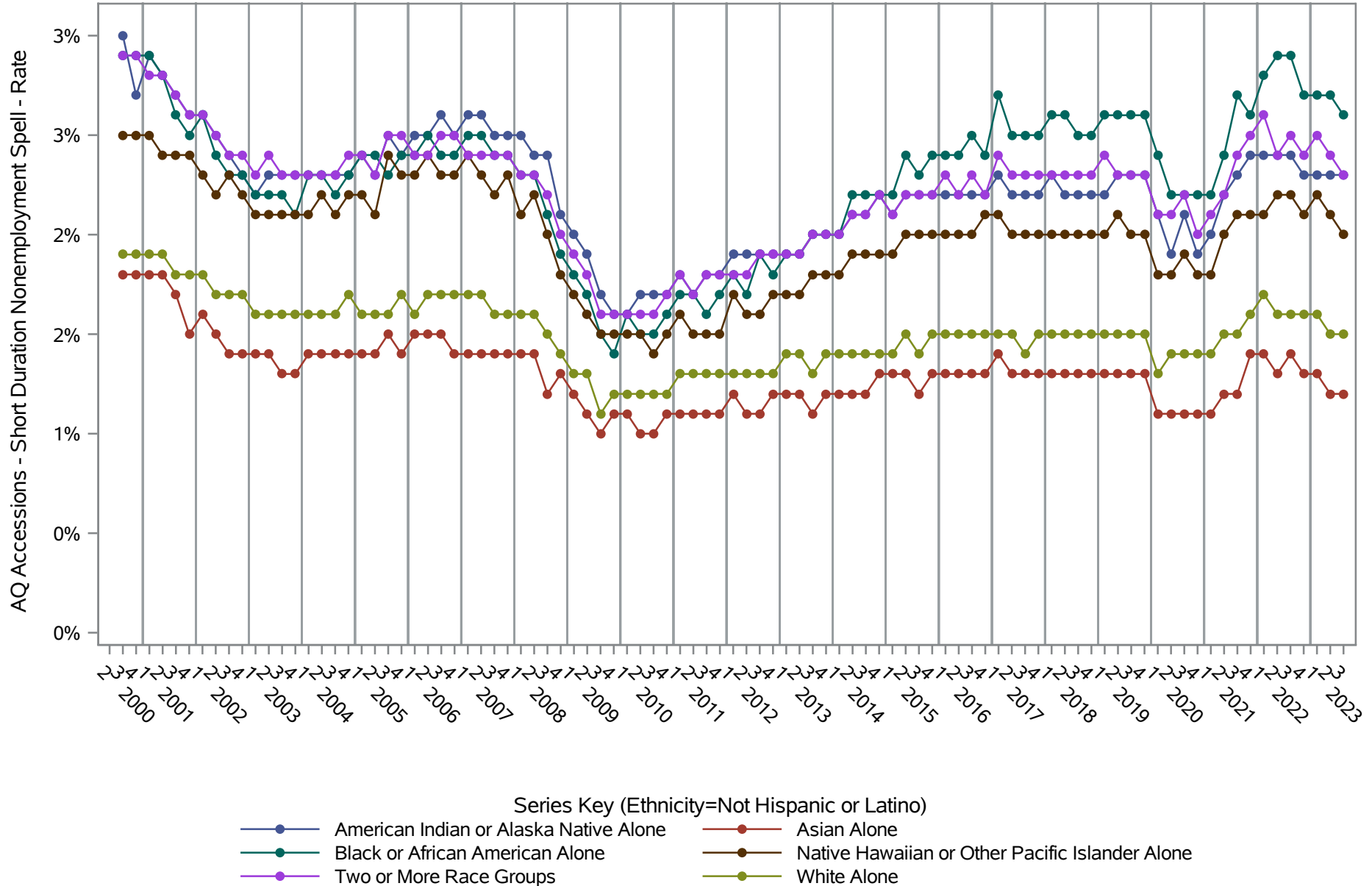


Source: United States Census Bureau, Job-to-Job Flow Statistics, Release R2024Q3 (Beta)

National J2J Rates

AQ Accessions - Short Duration Nonemployment Spell (Seasonally Adjusted)

by Race and Ethnicity (1 of 2) Ethnicity=Not Hispanic or Latino

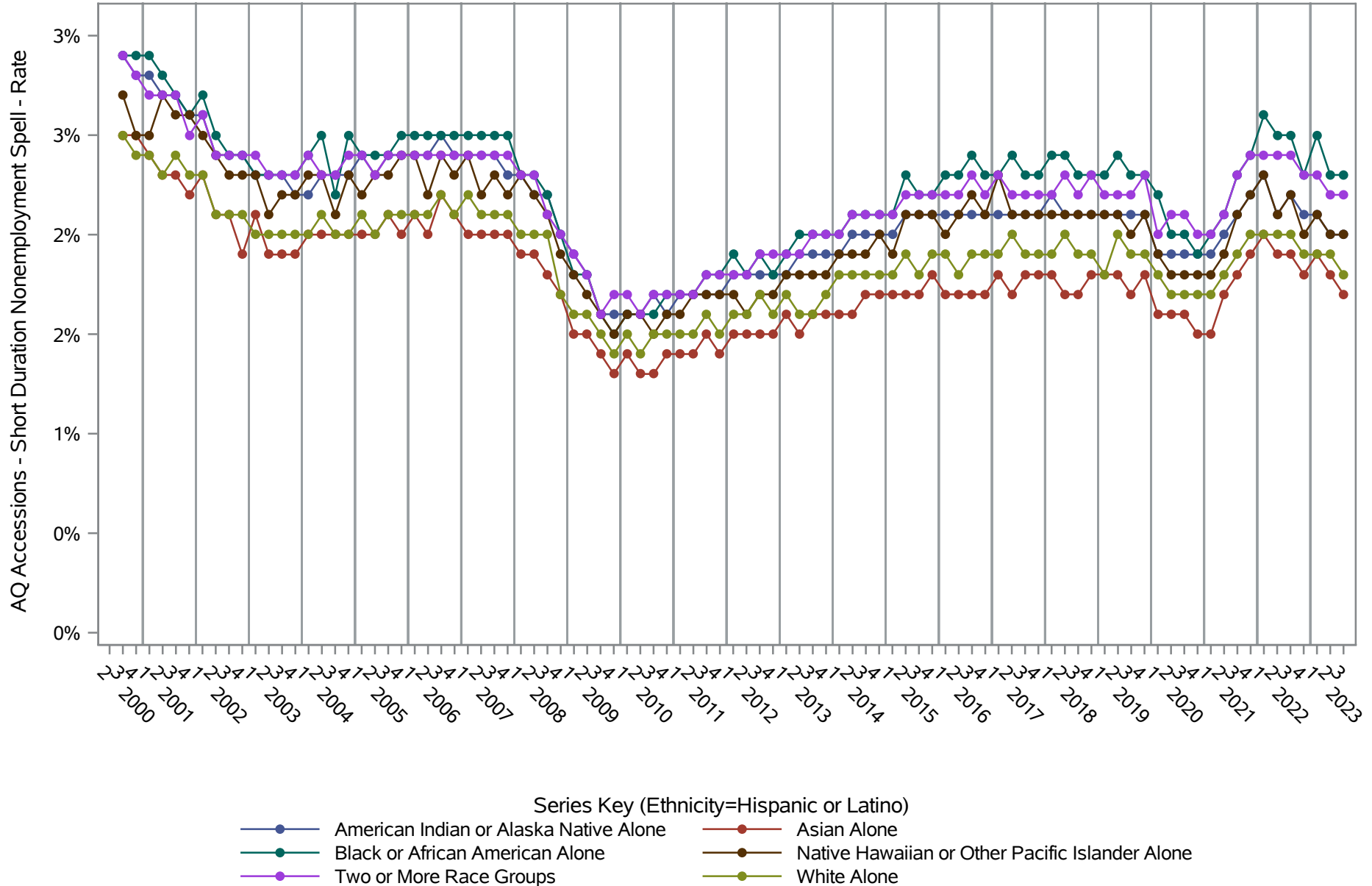


Source: United States Census Bureau, Job-to-Job Flow Statistics, Release R2024Q3 (Beta)

National J2J Rates

AQ Accessions - Short Duration Nonemployment Spell (Seasonally Adjusted)

by Race and Ethnicity (2 of 2) Ethnicity=Hispanic or Latino

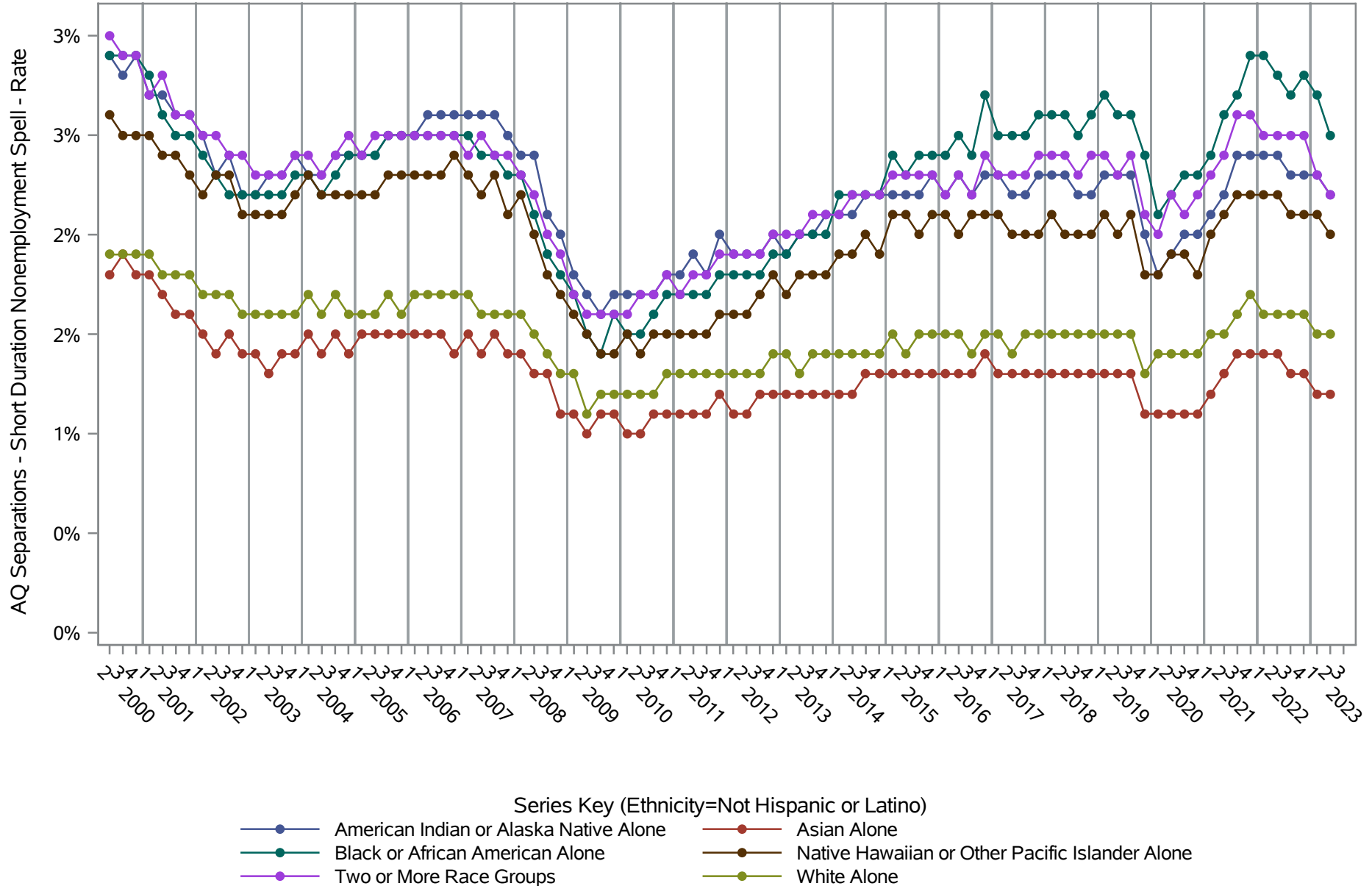


Source: United States Census Bureau, Job-to-Job Flow Statistics, Release R2024Q3 (Beta)

National J2J Rates

AQ Separations - Short Duration Nonemployment Spell (Seasonally Adjusted)

by Race and Ethnicity (1 of 2) Ethnicity=Not Hispanic or Latino

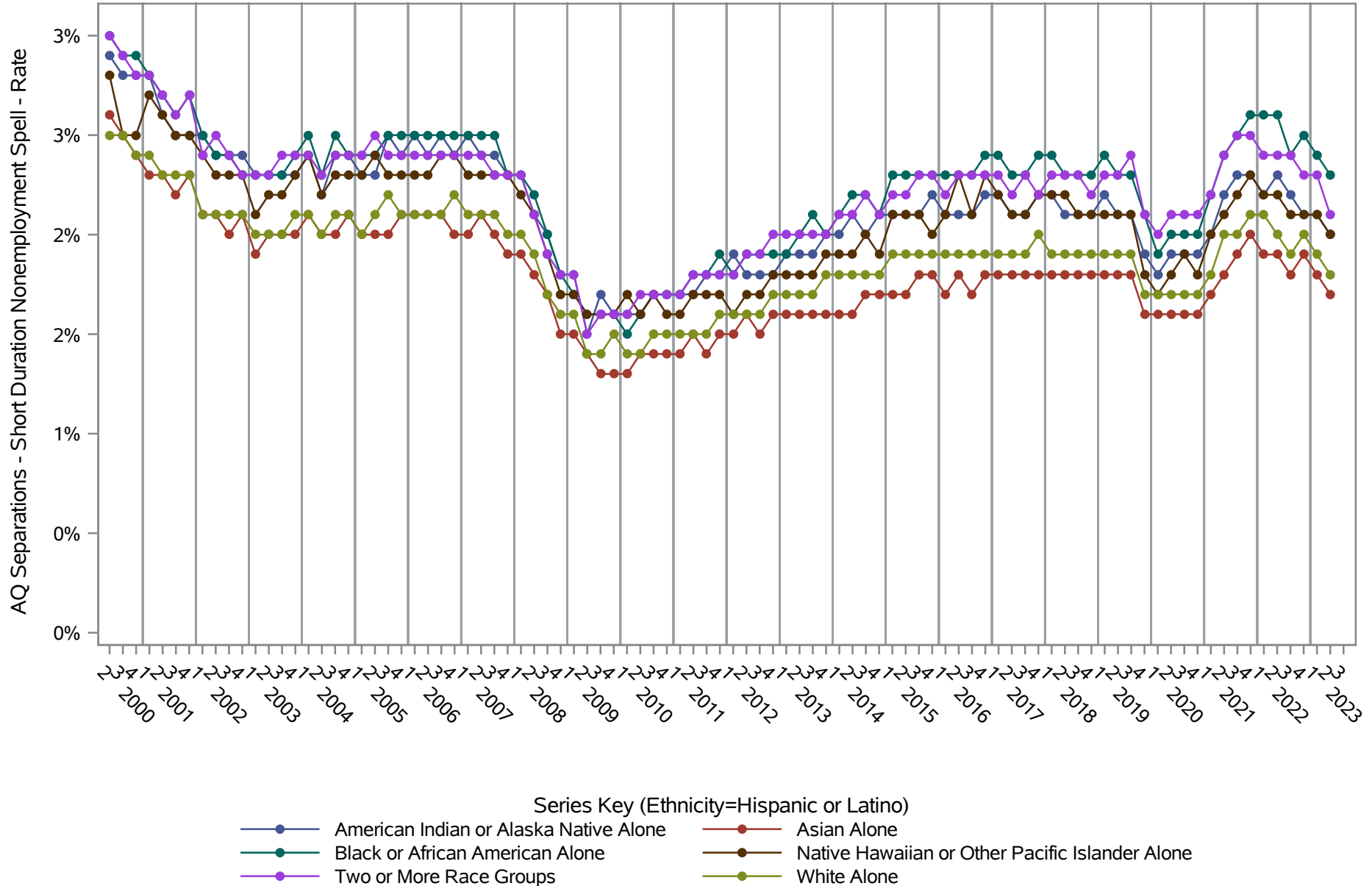


Source: United States Census Bureau, Job-to-Job Flow Statistics, Release R2024Q3 (Beta)

National J2J Rates

AQ Separations - Short Duration Nonemployment Spell (Seasonally Adjusted)

by Race and Ethnicity (2 of 2) Ethnicity=Hispanic or Latino



Source: United States Census Bureau, Job-to-Job Flow Statistics, Release R2024Q3 (Beta)