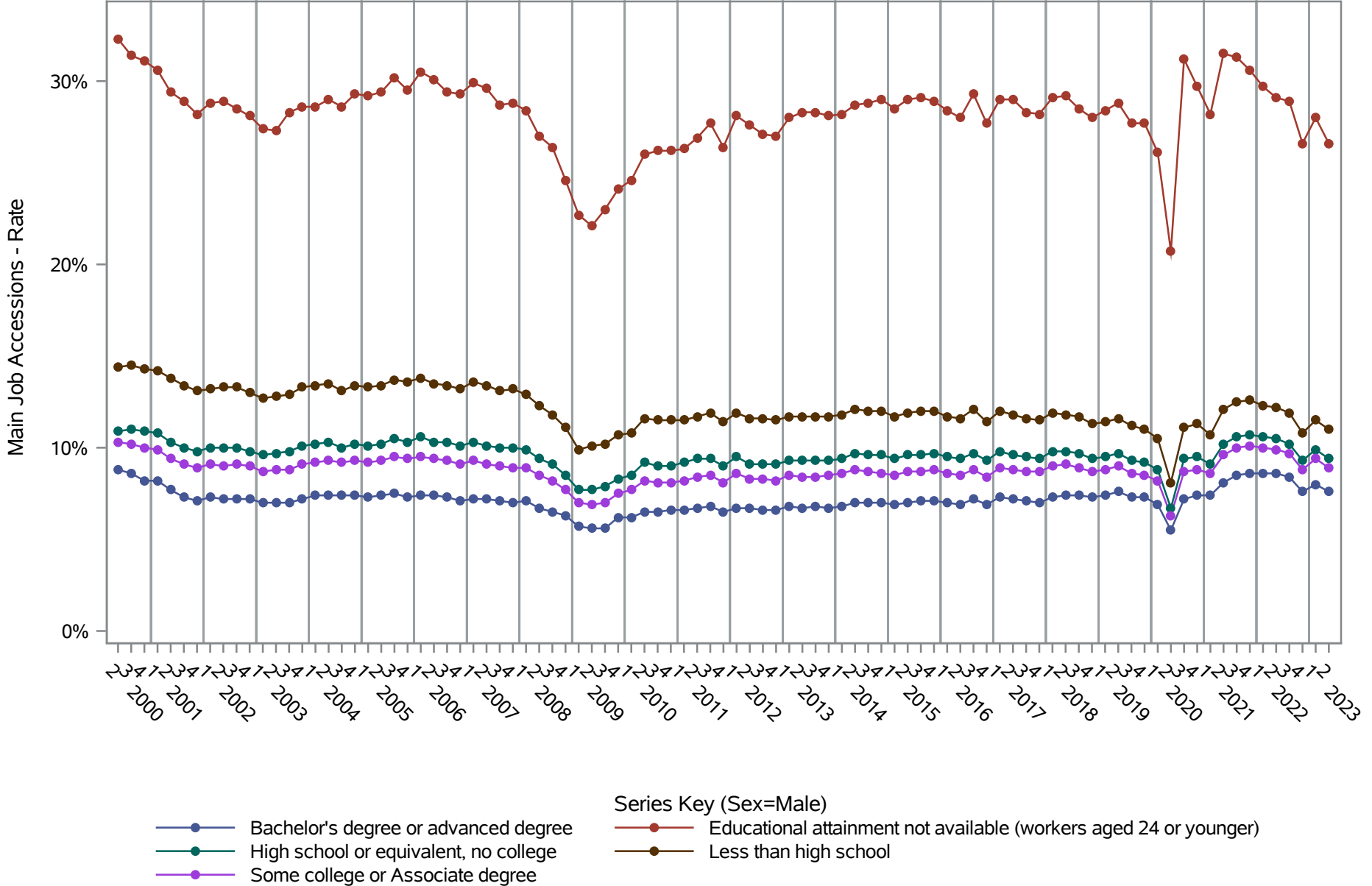


National J2J Rates

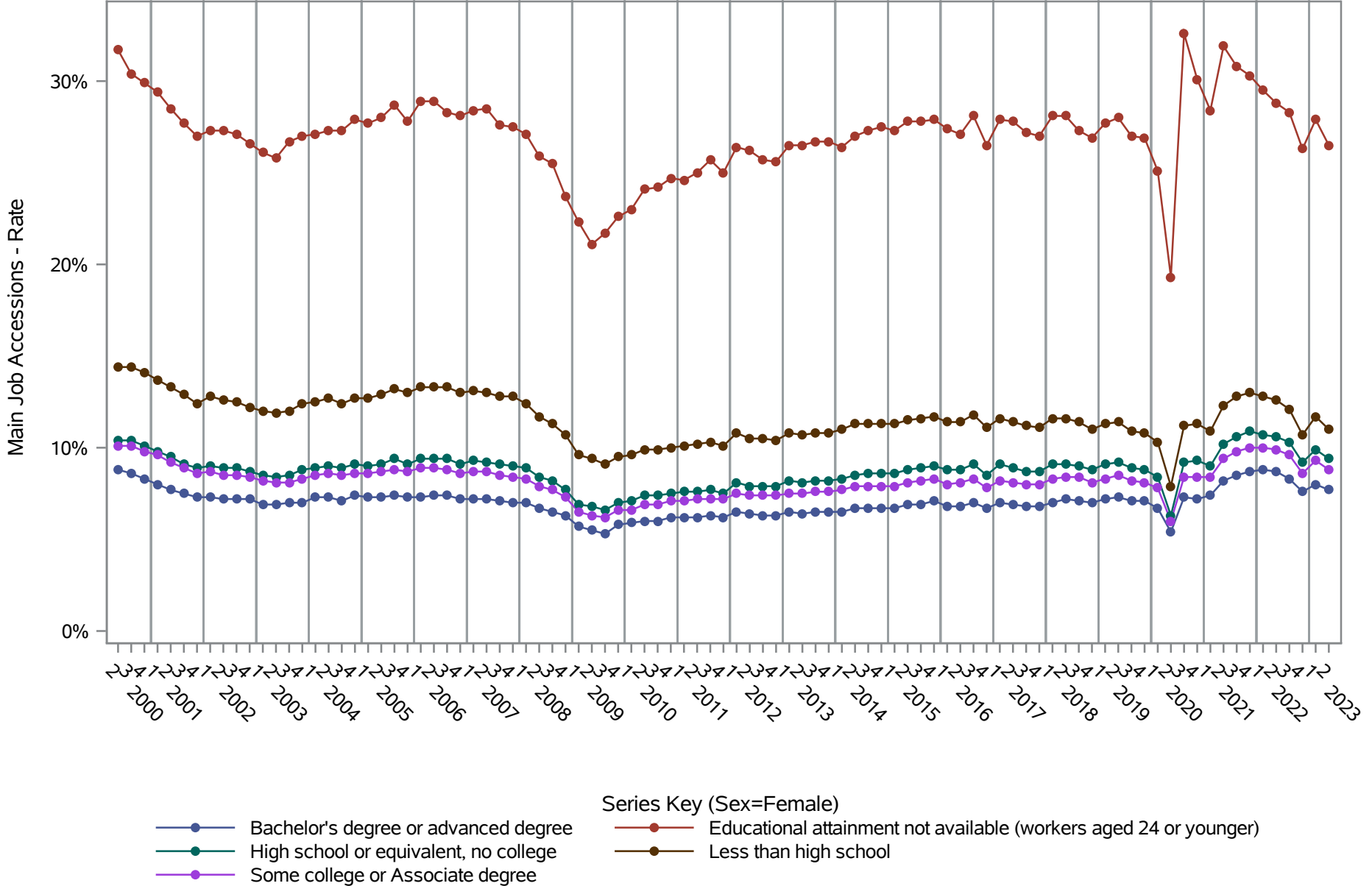
Main Job Accessions (Seasonally Adjusted) by Sex and Education (1 of 2) Sex=Male



Source: United States Census Bureau, Job-to-Job Flow Statistics, Release R2024Q2 (Beta)

National J2J Rates

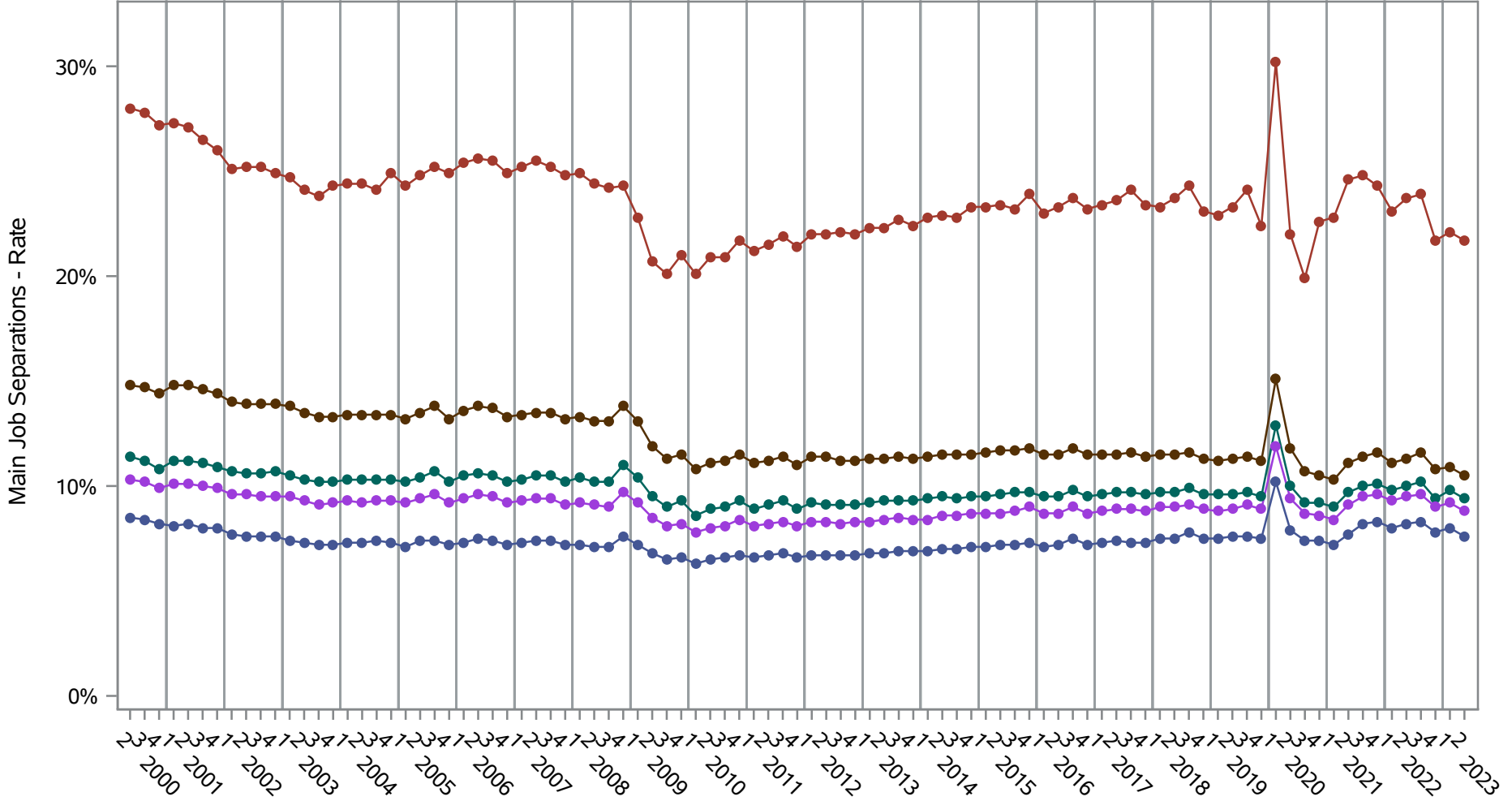
Main Job Accessions (Seasonally Adjusted) by Sex and Education (2 of 2) Sex=Female



Source: United States Census Bureau, Job-to-Job Flow Statistics, Release R2024Q2 (Beta)

National J2J Rates

Main Job Separations (Seasonally Adjusted) by Sex and Education (1 of 2) Sex=Male

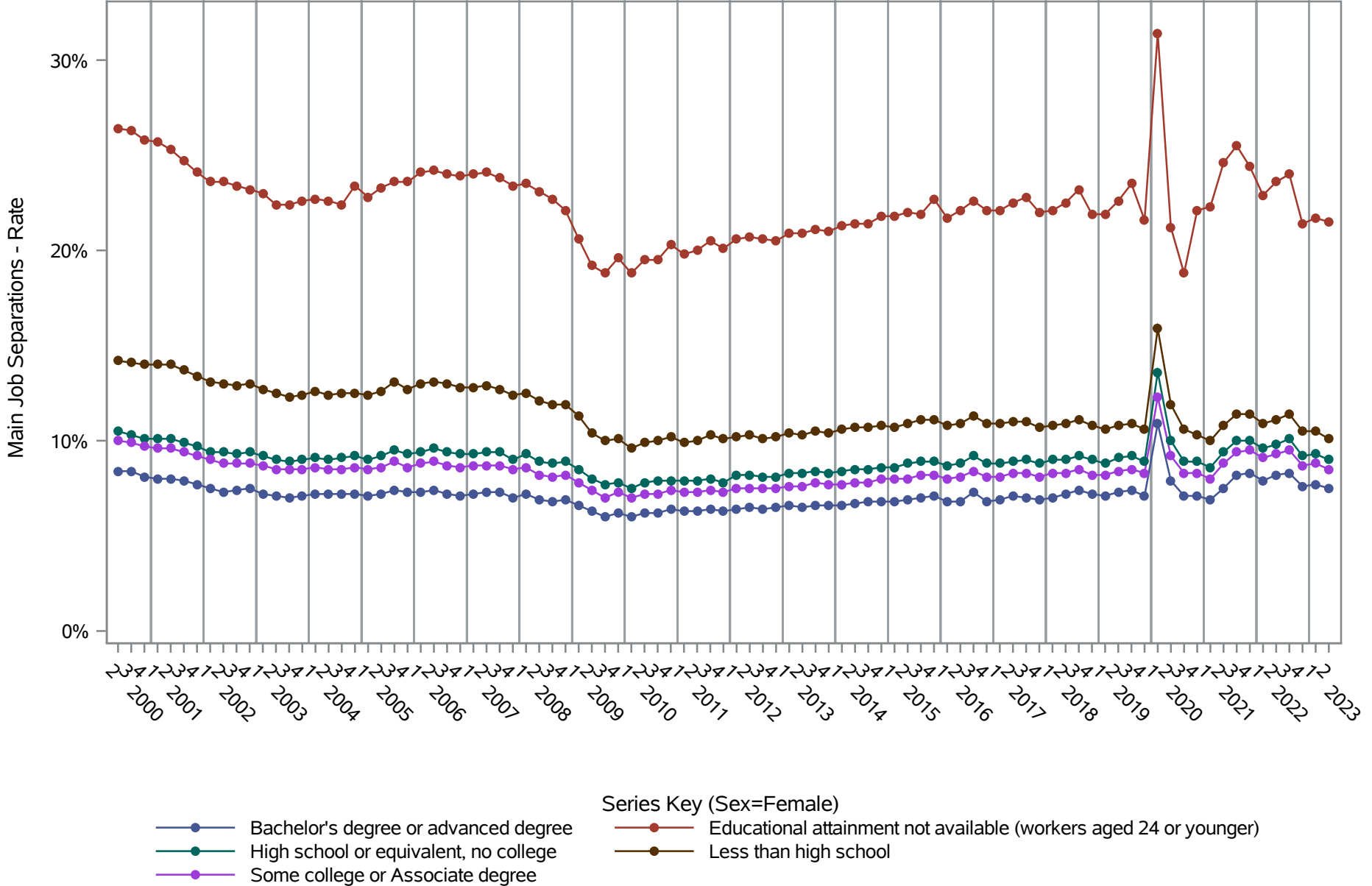


- Series Key (Sex=Male)
- Bachelor's degree or advanced degree
 - High school or equivalent, no college
 - Some college or Associate degree
 - Educational attainment not available (workers aged 24 or younger)
 - Less than high school

Source: United States Census Bureau, Job-to-Job Flow Statistics, Release R2024Q2 (Beta)

National J2J Rates

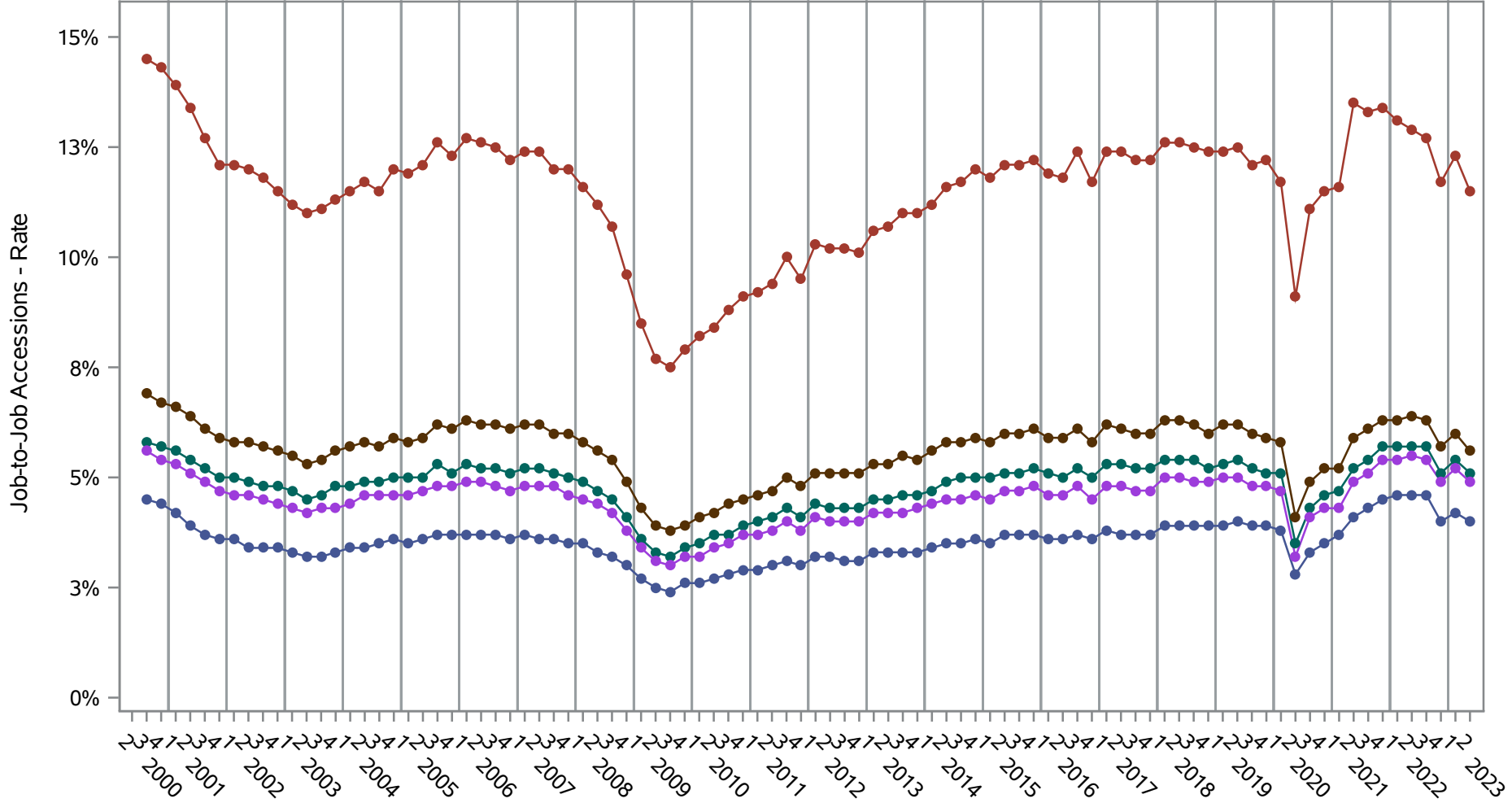
Main Job Separations (Seasonally Adjusted) by Sex and Education (2 of 2) Sex=Female



Source: United States Census Bureau, Job-to-Job Flow Statistics, Release R2024Q2 (Beta)

National J2J Rates

Job-to-Job Accessions (Seasonally Adjusted) by Sex and Education (1 of 2) Sex=Male

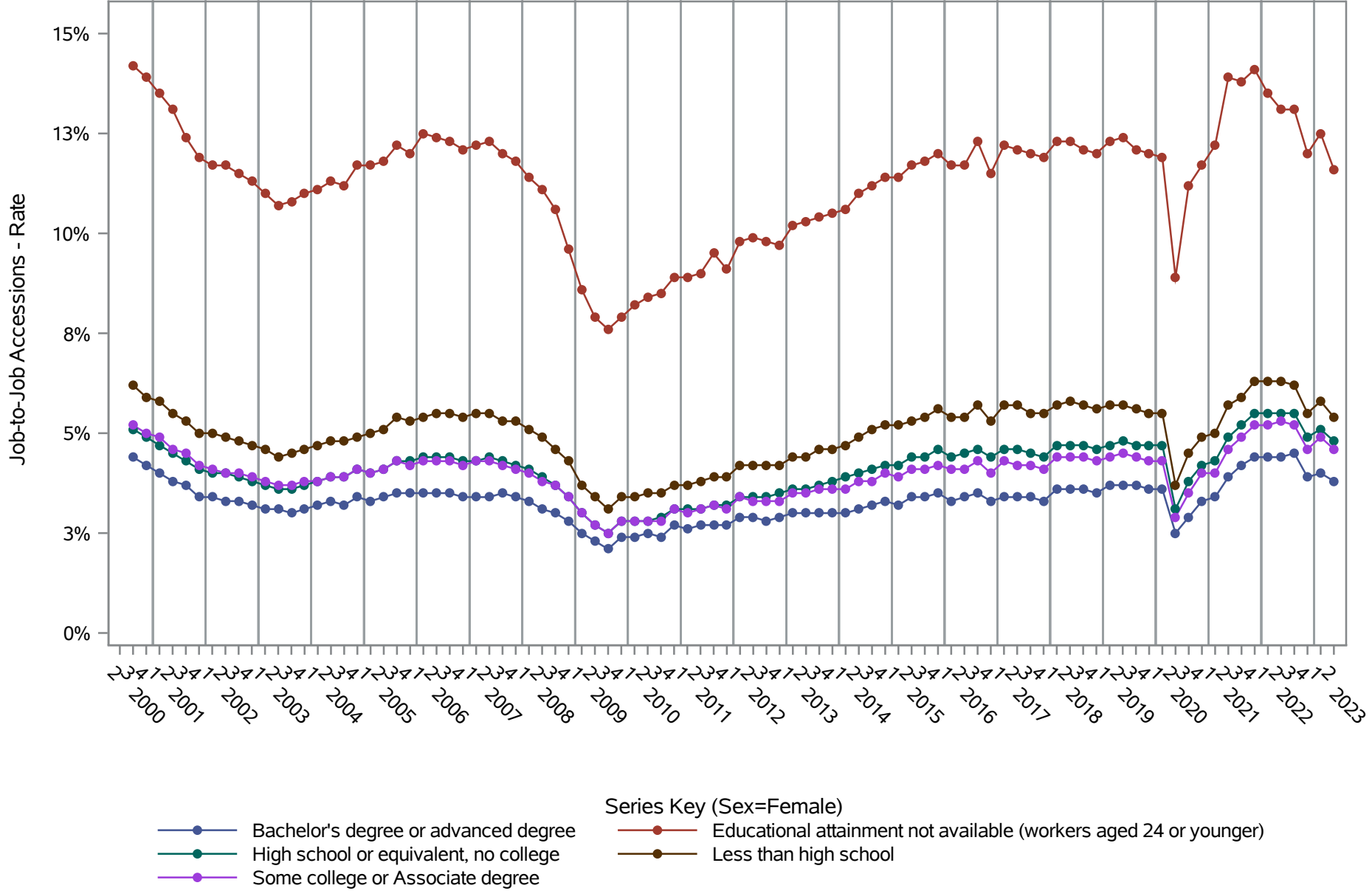


- Series Key (Sex=Male)
- Bachelor's degree or advanced degree
 - High school or equivalent, no college
 - Some college or Associate degree
 - Educational attainment not available (workers aged 24 or younger)
 - Less than high school

Source: United States Census Bureau, Job-to-Job Flow Statistics, Release R2024Q2 (Beta)

National J2J Rates

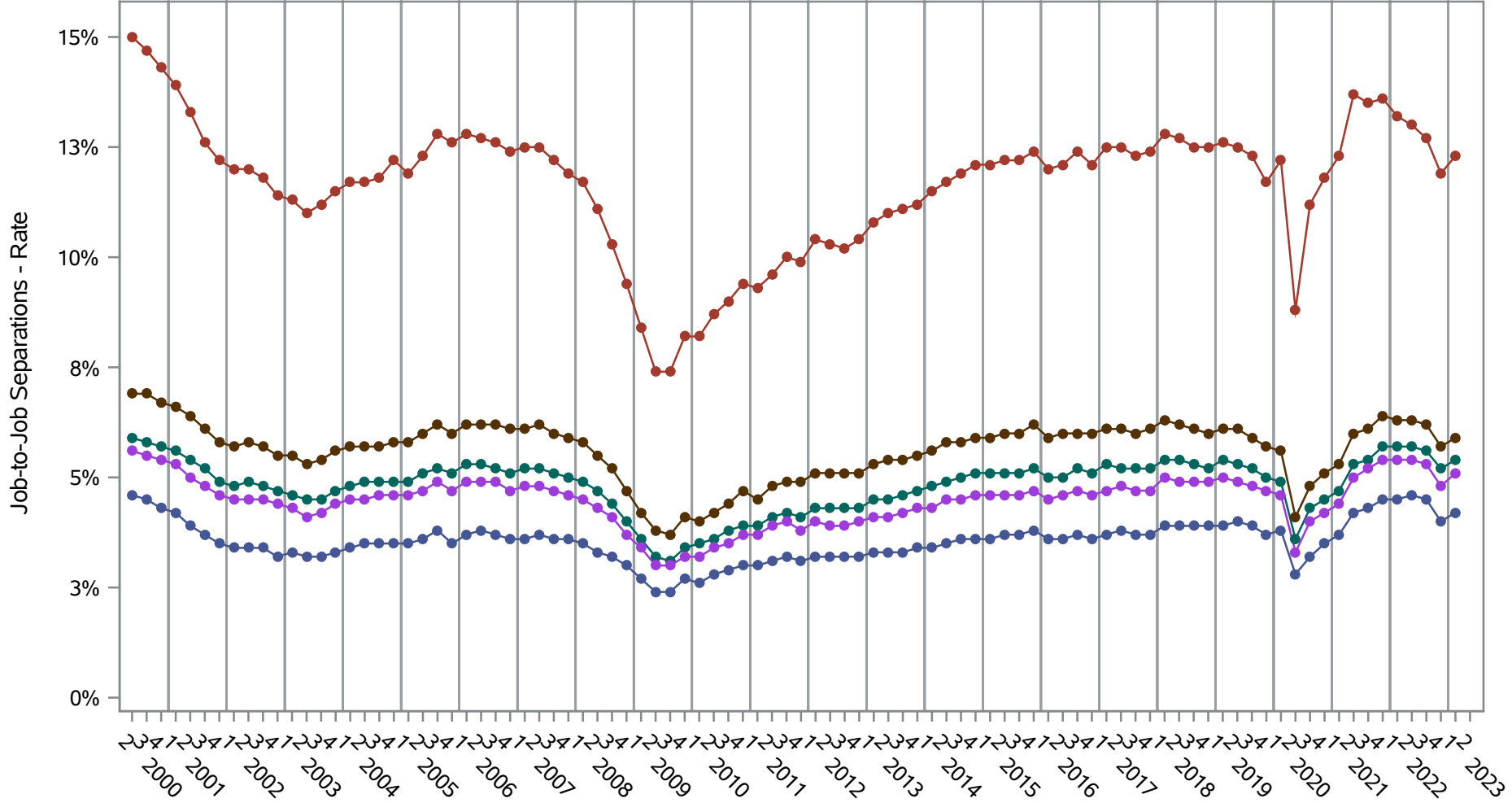
Job-to-Job Accessions (Seasonally Adjusted) by Sex and Education (2 of 2) Sex=Female



Source: United States Census Bureau, Job-to-Job Flow Statistics, Release R2024Q2 (Beta)

National J2J Rates

Job-to-Job Separations (Seasonally Adjusted) by Sex and Education (1 of 2) Sex=Male

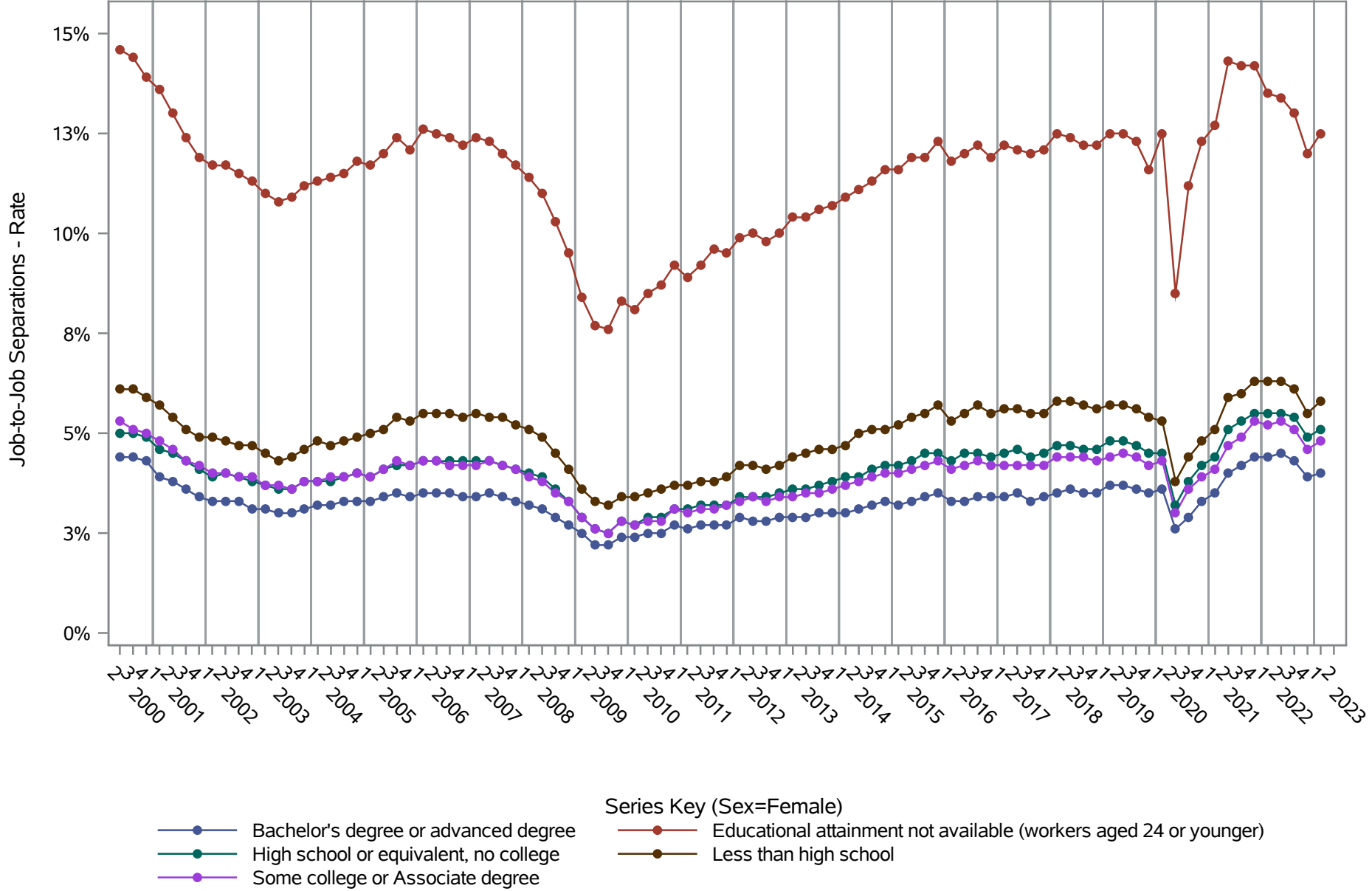


- Series Key (Sex=Male)
- Bachelor's degree or advanced degree
 - High school or equivalent, no college
 - Some college or Associate degree
 - Educational attainment not available (workers aged 24 or younger)
 - Less than high school

Source: United States Census Bureau, Job-to-Job Flow Statistics, Release R2024Q2 (Beta)

National J2J Rates

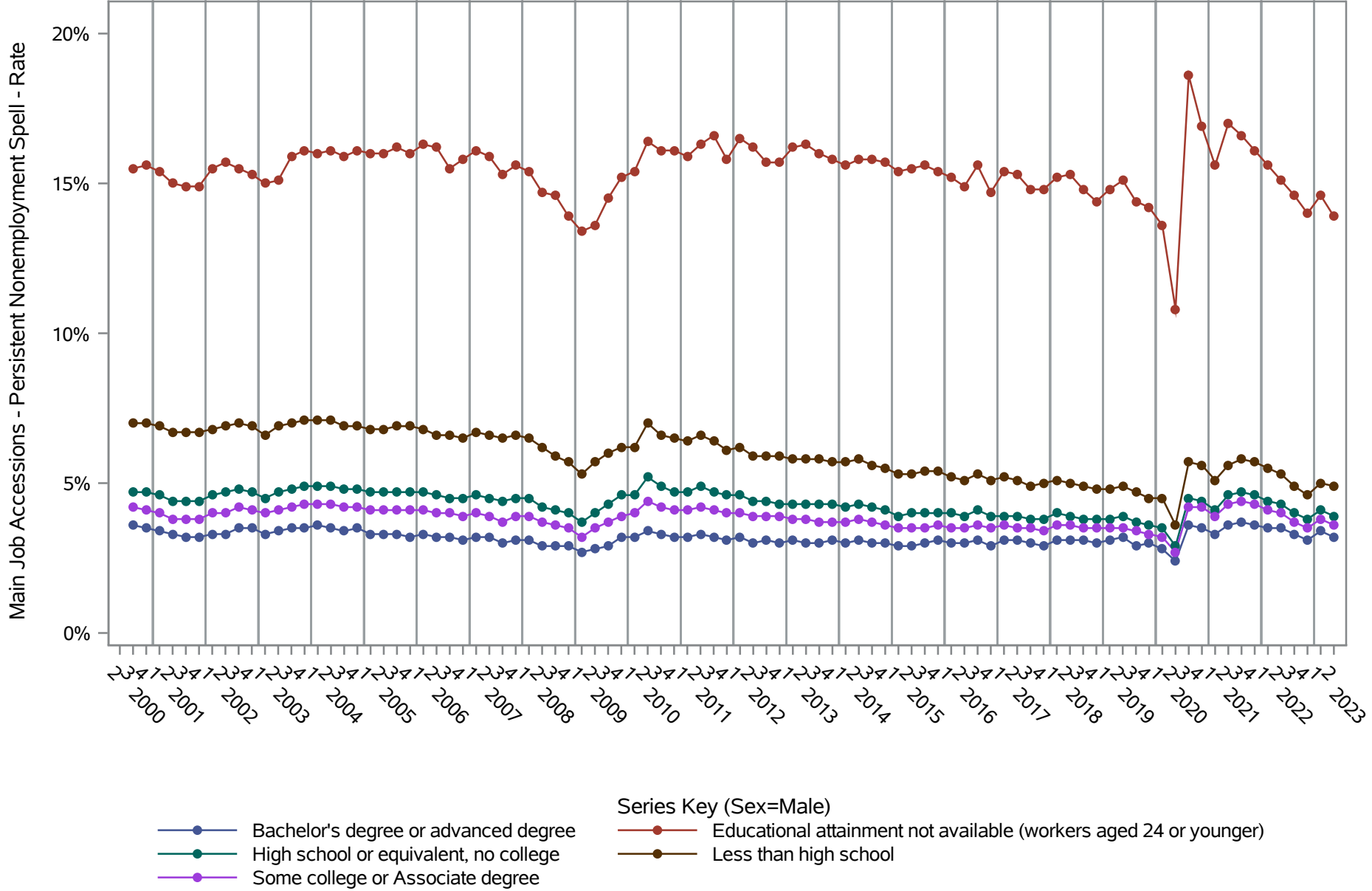
Job-to-Job Separations (Seasonally Adjusted) by Sex and Education (2 of 2) Sex=Female



Source: United States Census Bureau, Job-to-Job Flow Statistics, Release R2024Q2 (Beta)

National J2J Rates

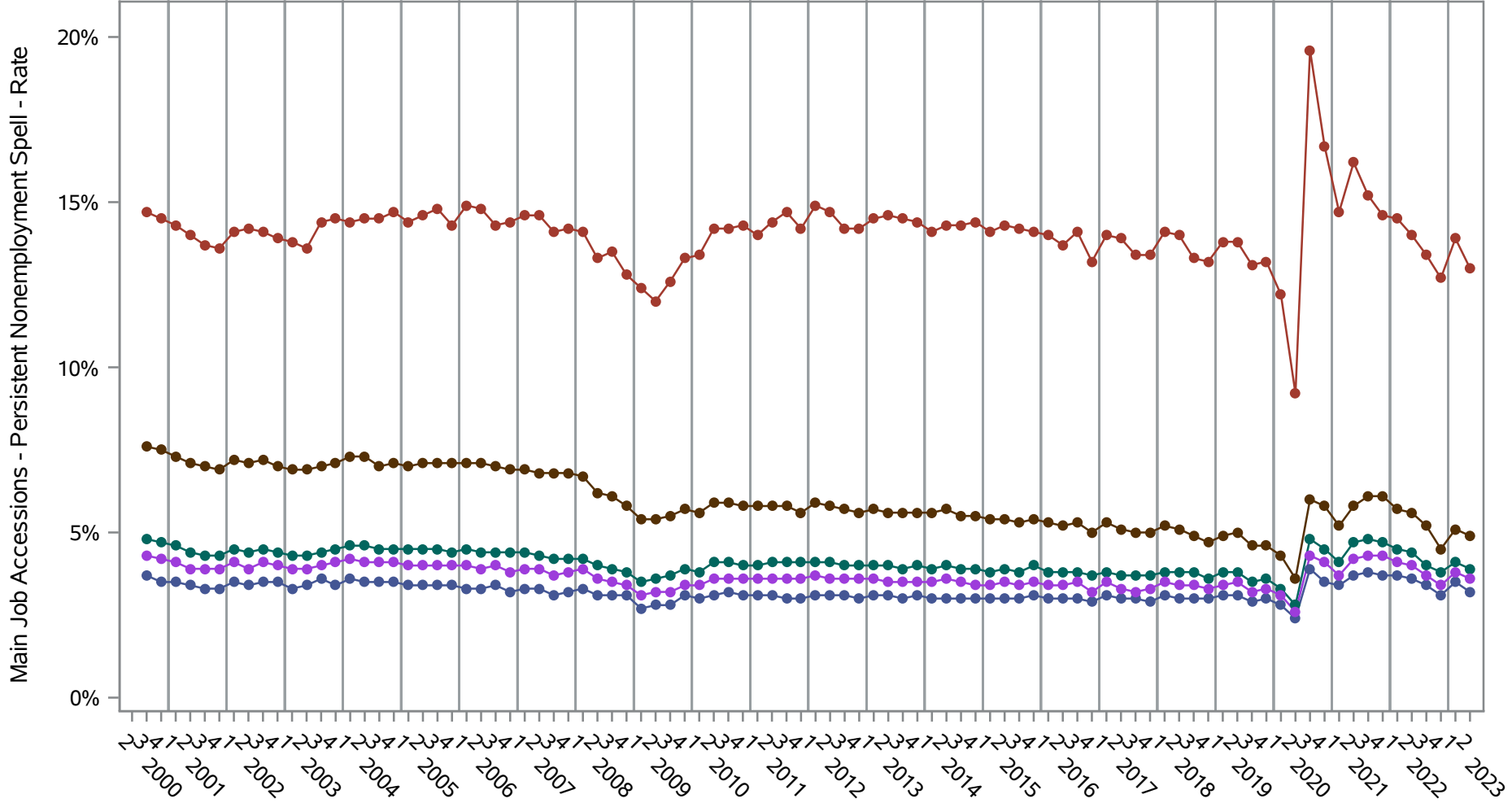
Main Job Accessions - Persistent Nonemployment Spell (Seasonally Adjusted) by Sex and Education (1 of 2) Sex=Male



Source: United States Census Bureau, Job-to-Job Flow Statistics, Release R2024Q2 (Beta)

National J2J Rates

Main Job Accessions - Persistent Nonemployment Spell (Seasonally Adjusted) by Sex and Education (2 of 2) Sex=Female



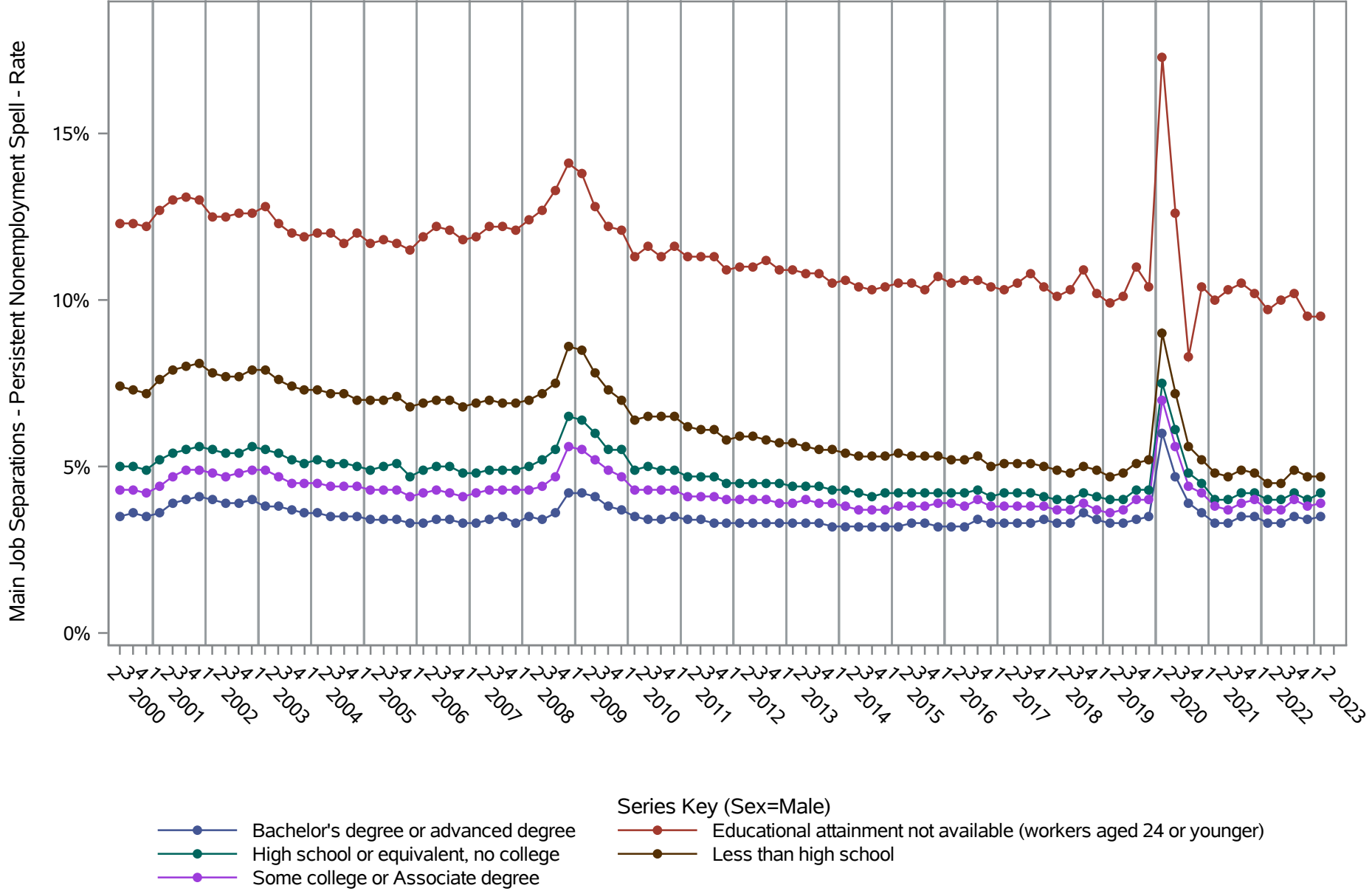
Series Key (Sex=Female)

- Bachelor's degree or advanced degree
- High school or equivalent, no college
- Some college or Associate degree
- Educational attainment not available (workers aged 24 or younger)
- Less than high school

Source: United States Census Bureau, Job-to-Job Flow Statistics, Release R2024Q2 (Beta)

National J2J Rates

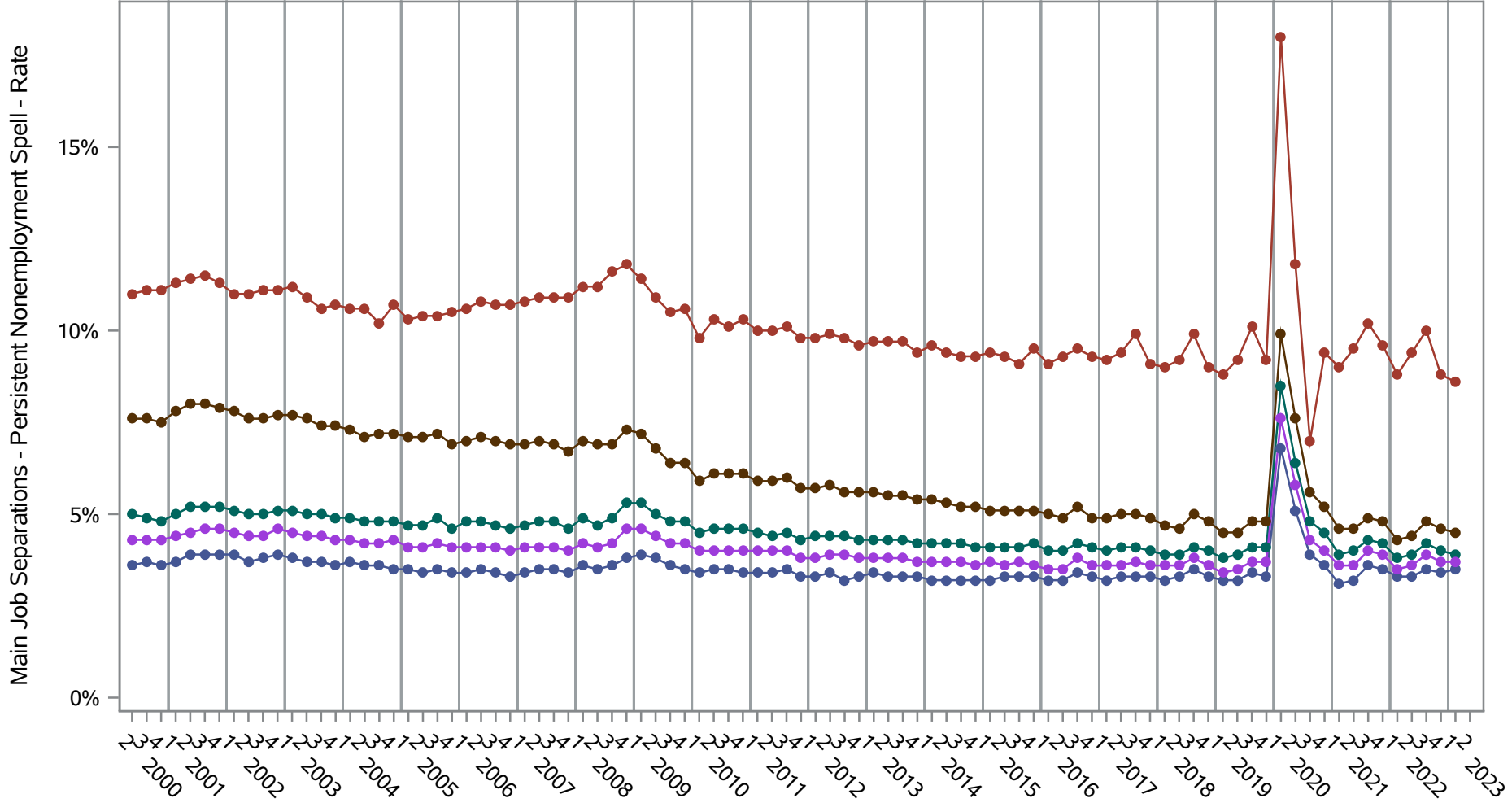
Main Job Separations - Persistent Nonemployment Spell (Seasonally Adjusted) by Sex and Education (1 of 2) Sex=Male



Source: United States Census Bureau, Job-to-Job Flow Statistics, Release R2024Q2 (Beta)

National J2J Rates

Main Job Separations - Persistent Nonemployment Spell (Seasonally Adjusted) by Sex and Education (2 of 2) Sex=Female

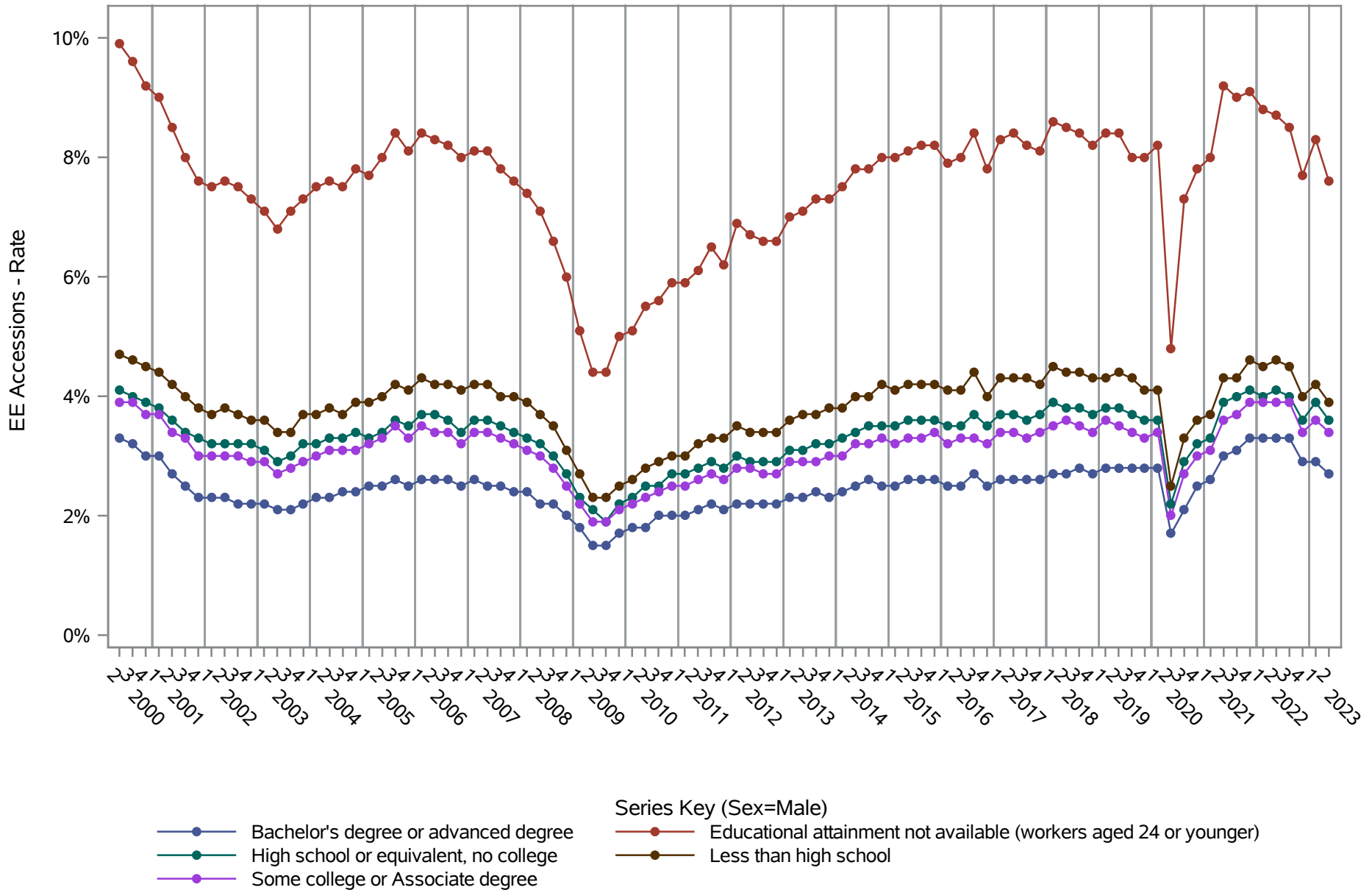


- Series Key (Sex=Female)
- Bachelor's degree or advanced degree
 - High school or equivalent, no college
 - Some college or Associate degree
 - Educational attainment not available (workers aged 24 or younger)
 - Less than high school

Source: United States Census Bureau, Job-to-Job Flow Statistics, Release R2024Q2 (Beta)

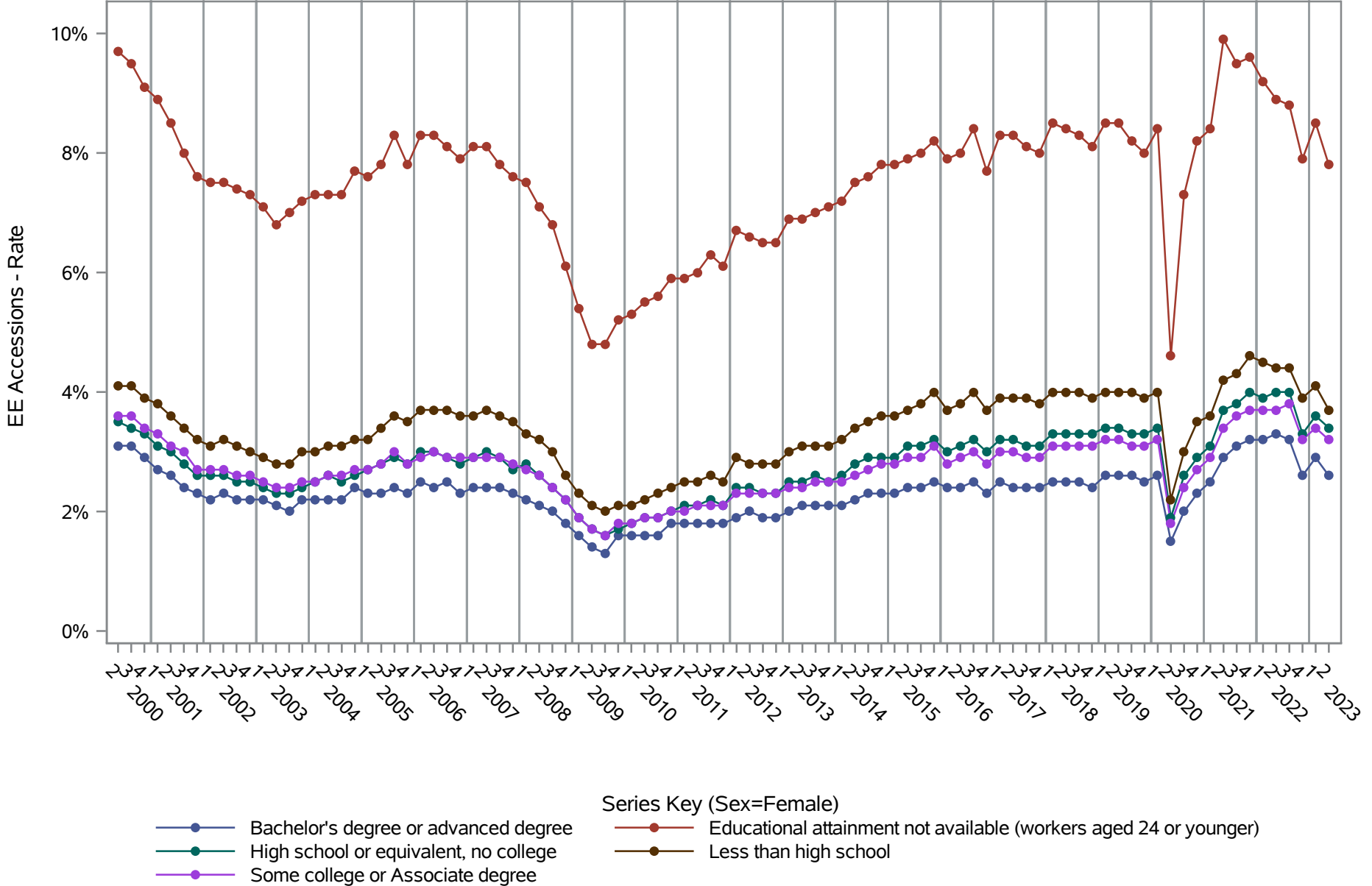
National J2J Rates

EE Accessions (Seasonally Adjusted) by Sex and Education (1 of 2) Sex=Male



Source: United States Census Bureau, Job-to-Job Flow Statistics, Release R2024Q2 (Beta)

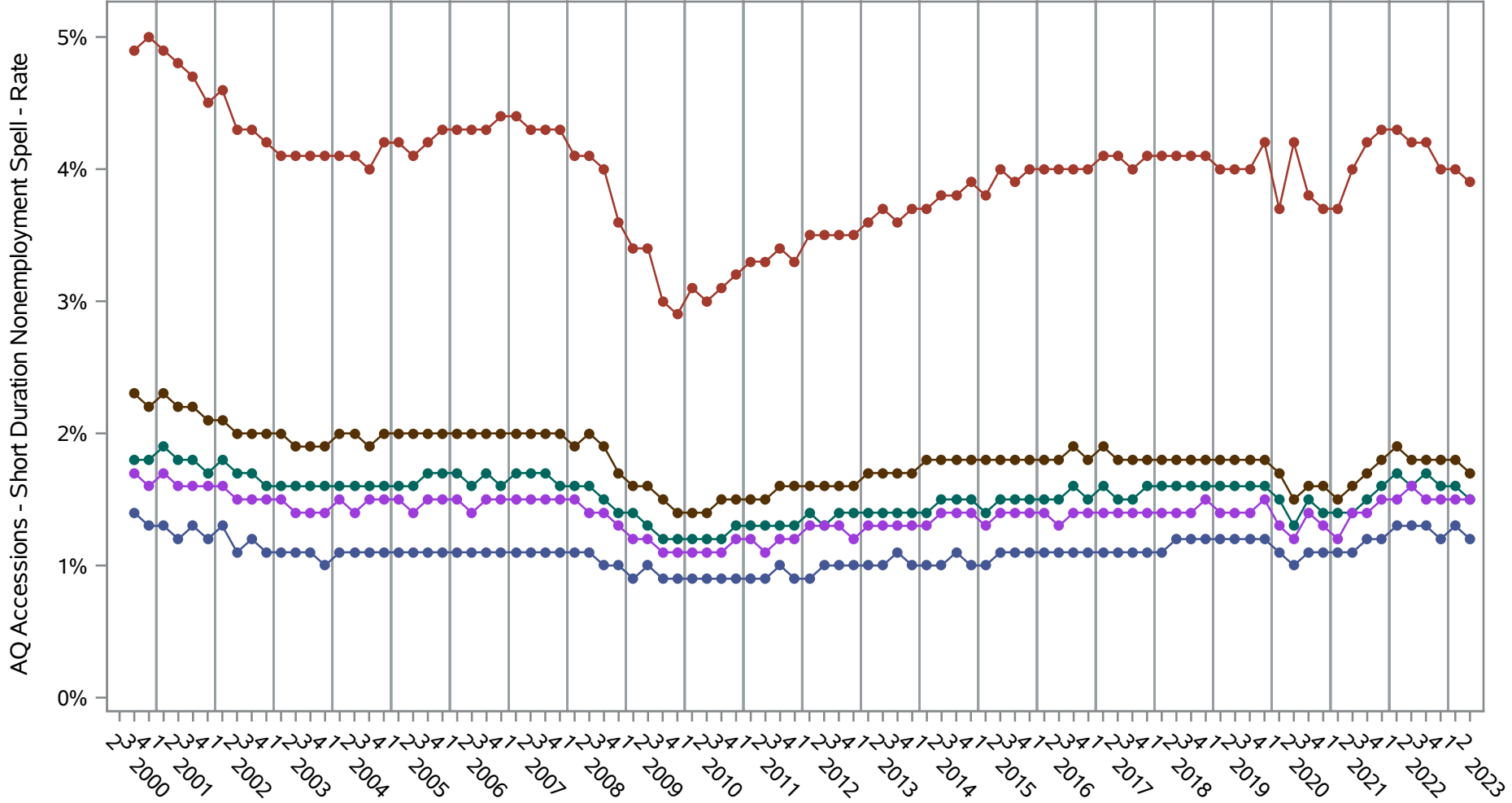
National J2J Rates
EE Accessions (Seasonally Adjusted)
by Sex and Education (2 of 2) Sex=Female



Source: United States Census Bureau, Job-to-Job Flow Statistics, Release R2024Q2 (Beta)

National J2J Rates

AQ Accessions - Short Duration Nonemployment Spell (Seasonally Adjusted) by Sex and Education (1 of 2) Sex=Male



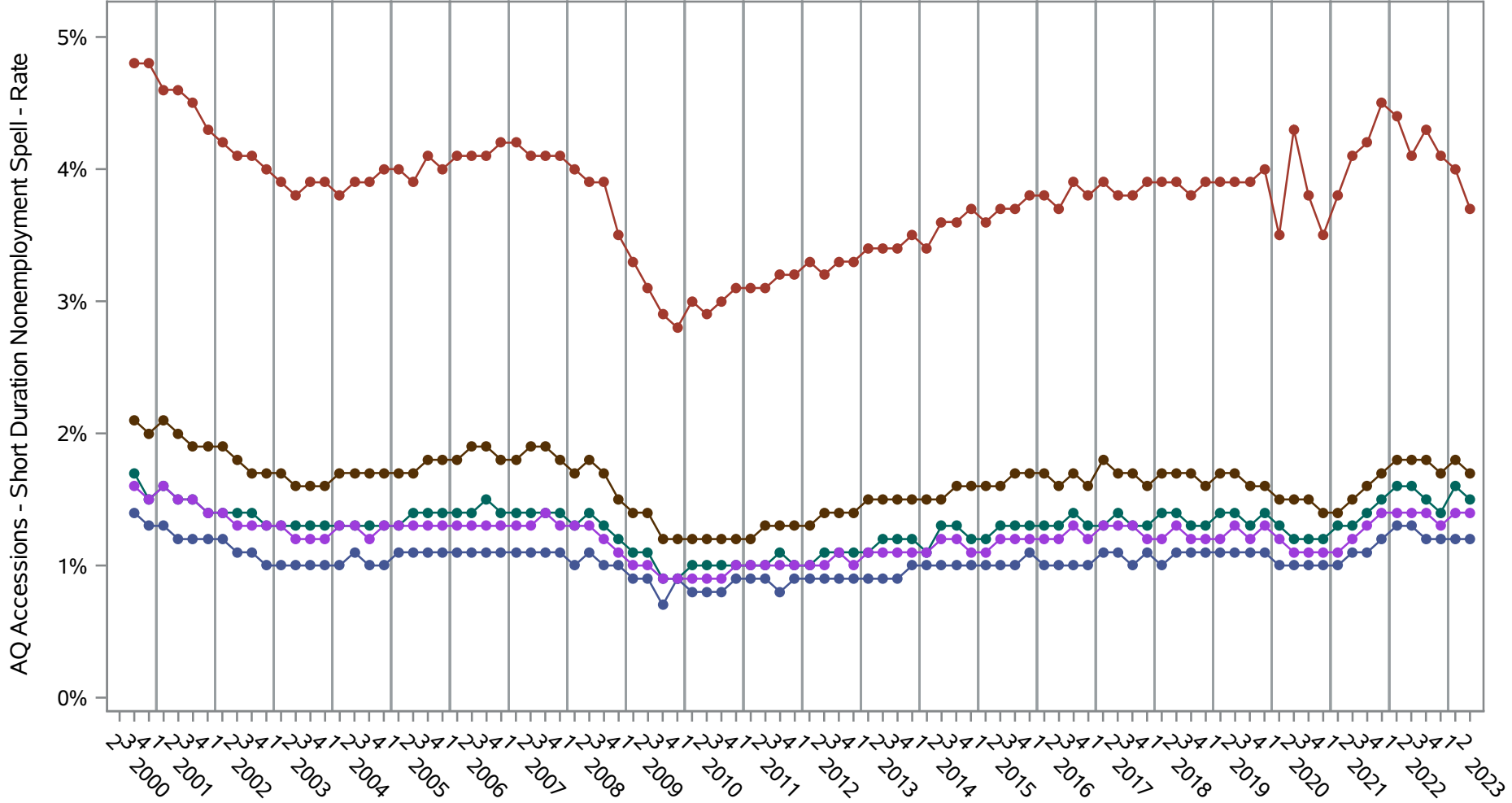
Series Key (Sex=Male)

- Bachelor's degree or advanced degree
- High school or equivalent, no college
- Some college or Associate degree
- Educational attainment not available (workers aged 24 or younger)
- Less than high school

Source: United States Census Bureau, Job-to-Job Flow Statistics, Release R2024Q2 (Beta)

National J2J Rates

AQ Accessions - Short Duration Nonemployment Spell (Seasonally Adjusted) by Sex and Education (2 of 2) Sex=Female

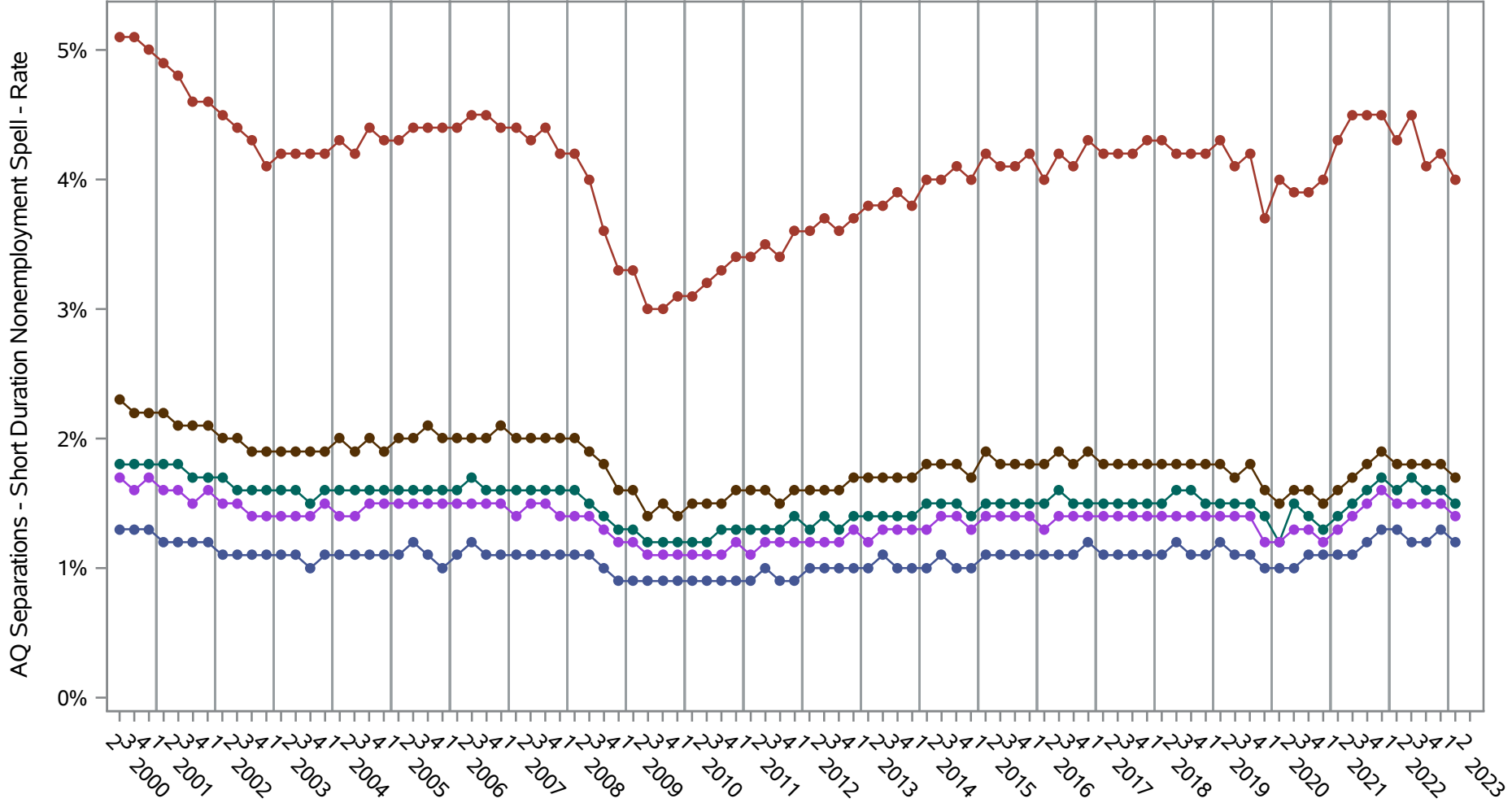


Series Key (Sex=Female)

- Bachelor's degree or advanced degree
- High school or equivalent, no college
- Some college or Associate degree
- Educational attainment not available (workers aged 24 or younger)
- Less than high school

Source: United States Census Bureau, Job-to-Job Flow Statistics, Release R2024Q2 (Beta)

National J2J Rates
AQ Separations - Short Duration Nonemployment Spell (Seasonally Adjusted)
by Sex and Education (1 of 2) Sex=Male



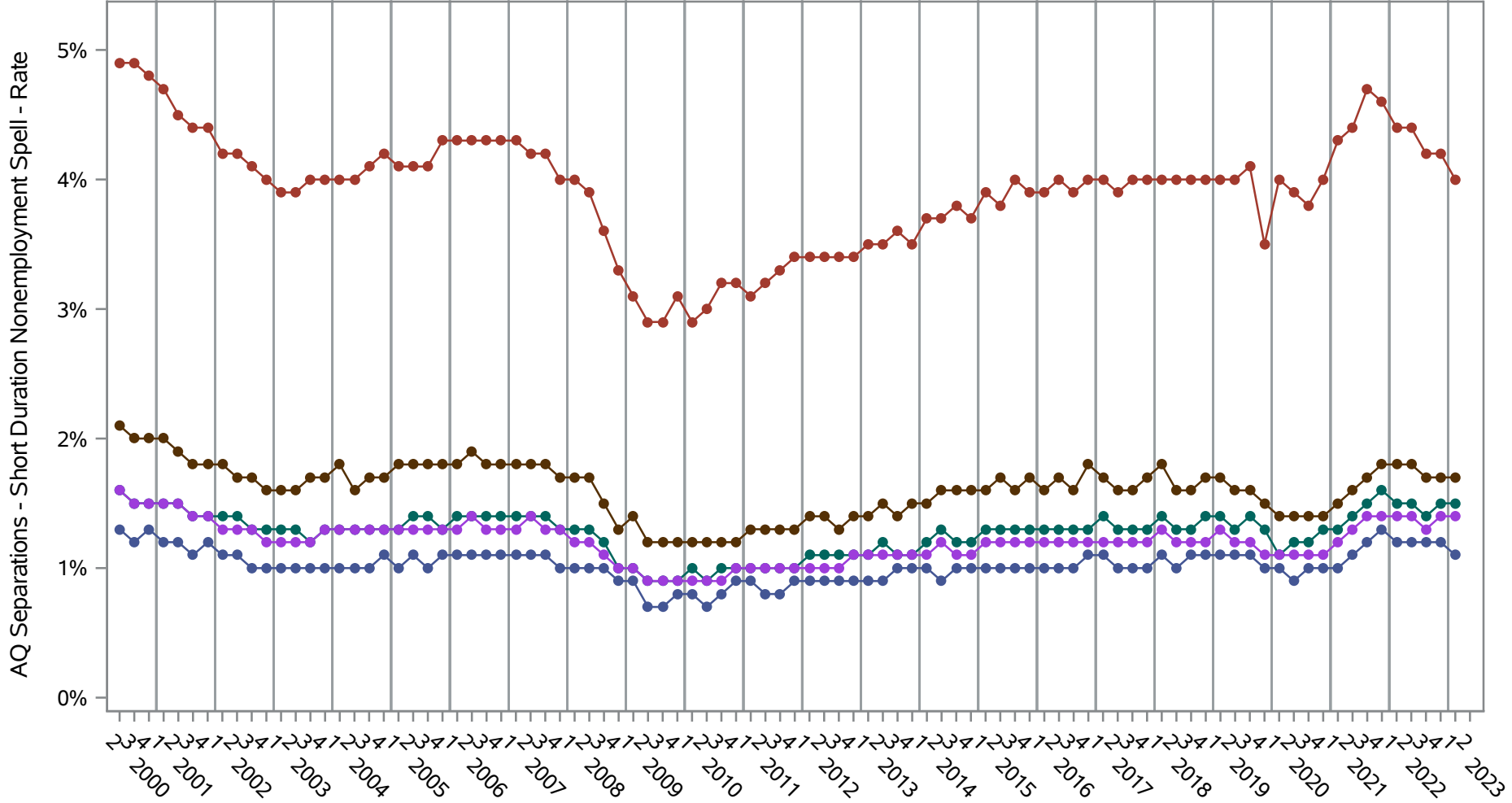
- Series Key (Sex=Male)
- Bachelor's degree or advanced degree
 - High school or equivalent, no college
 - Some college or Associate degree
 - Educational attainment not available (workers aged 24 or younger)
 - Less than high school

Source: United States Census Bureau, Job-to-Job Flow Statistics, Release R2024Q2 (Beta)

National J2J Rates

AQ Separations - Short Duration Nonemployment Spell (Seasonally Adjusted)

by Sex and Education (2 of 2) Sex=Female



- Series Key (Sex=Female)
- Bachelor's degree or advanced degree
 - High school or equivalent, no college
 - Some college or Associate degree
 - Educational attainment not available (workers aged 24 or younger)
 - Less than high school

Source: United States Census Bureau, Job-to-Job Flow Statistics, Release R2024Q2 (Beta)