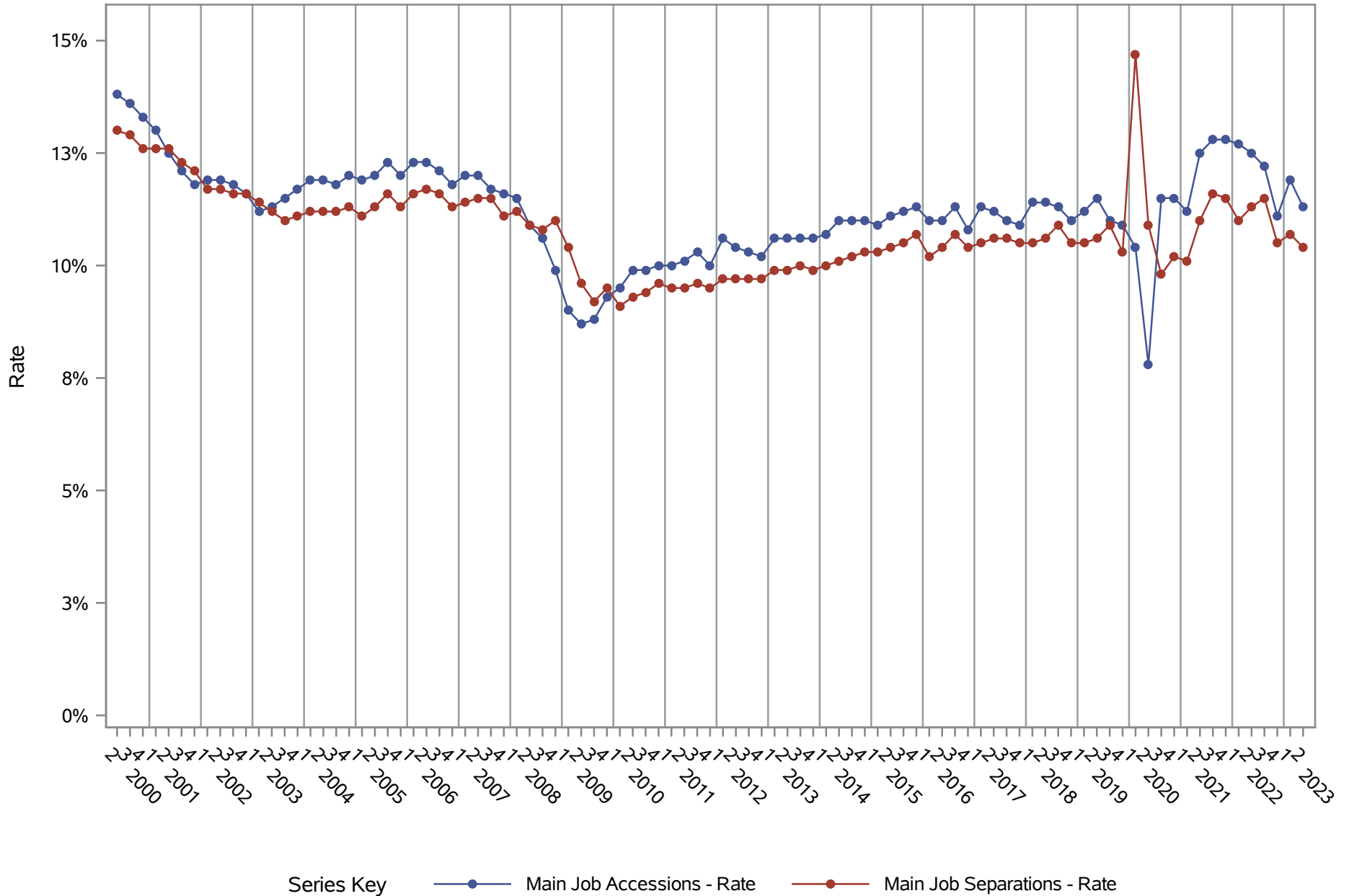


# National J2J Rates

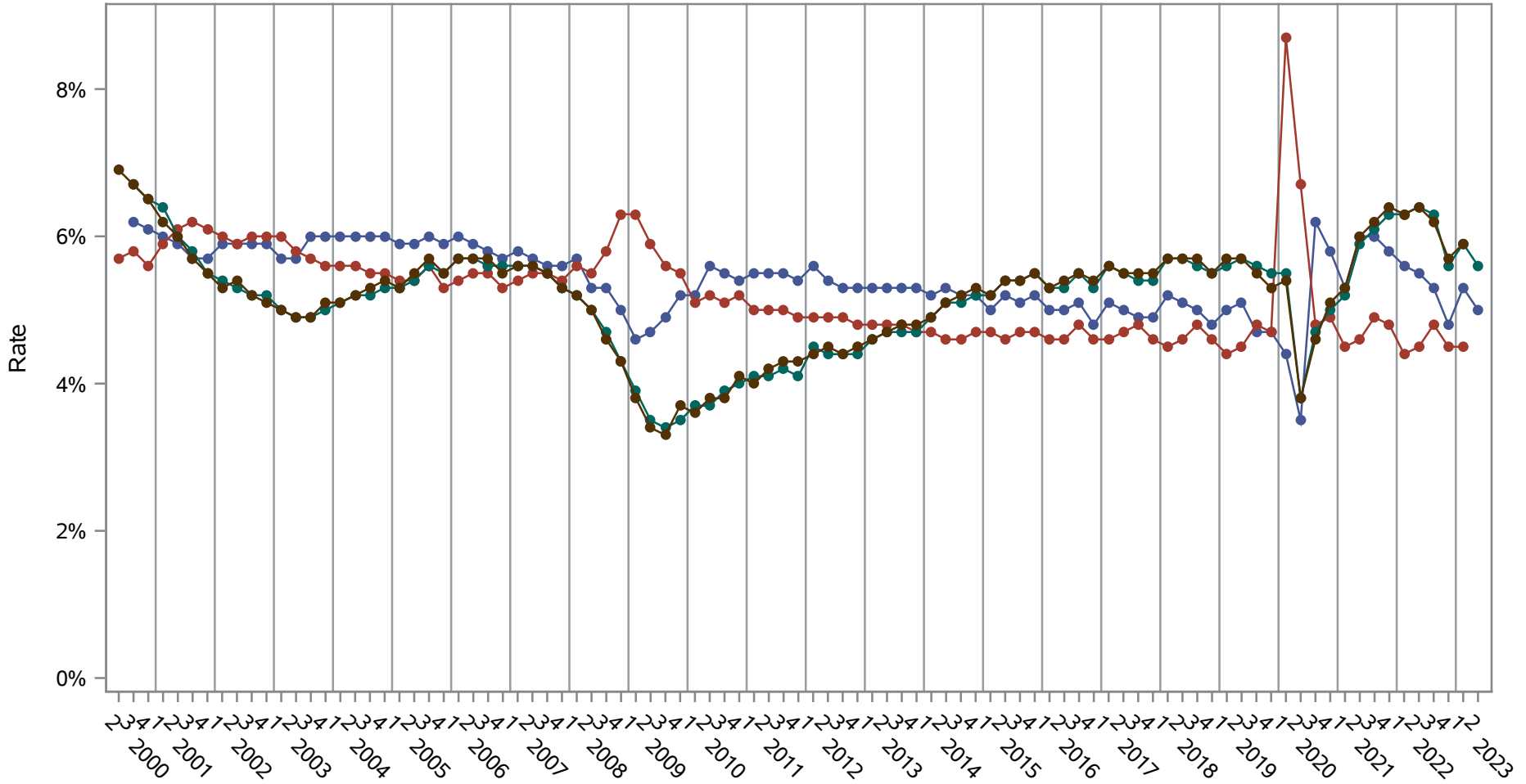
## Accessions to and Separations from Main Jobs (Seasonally Adjusted)



**Source: United States Census Bureau, Job-to-Job Flow Statistics, Release R2024Q2 (Beta)**

# National J2J Rates

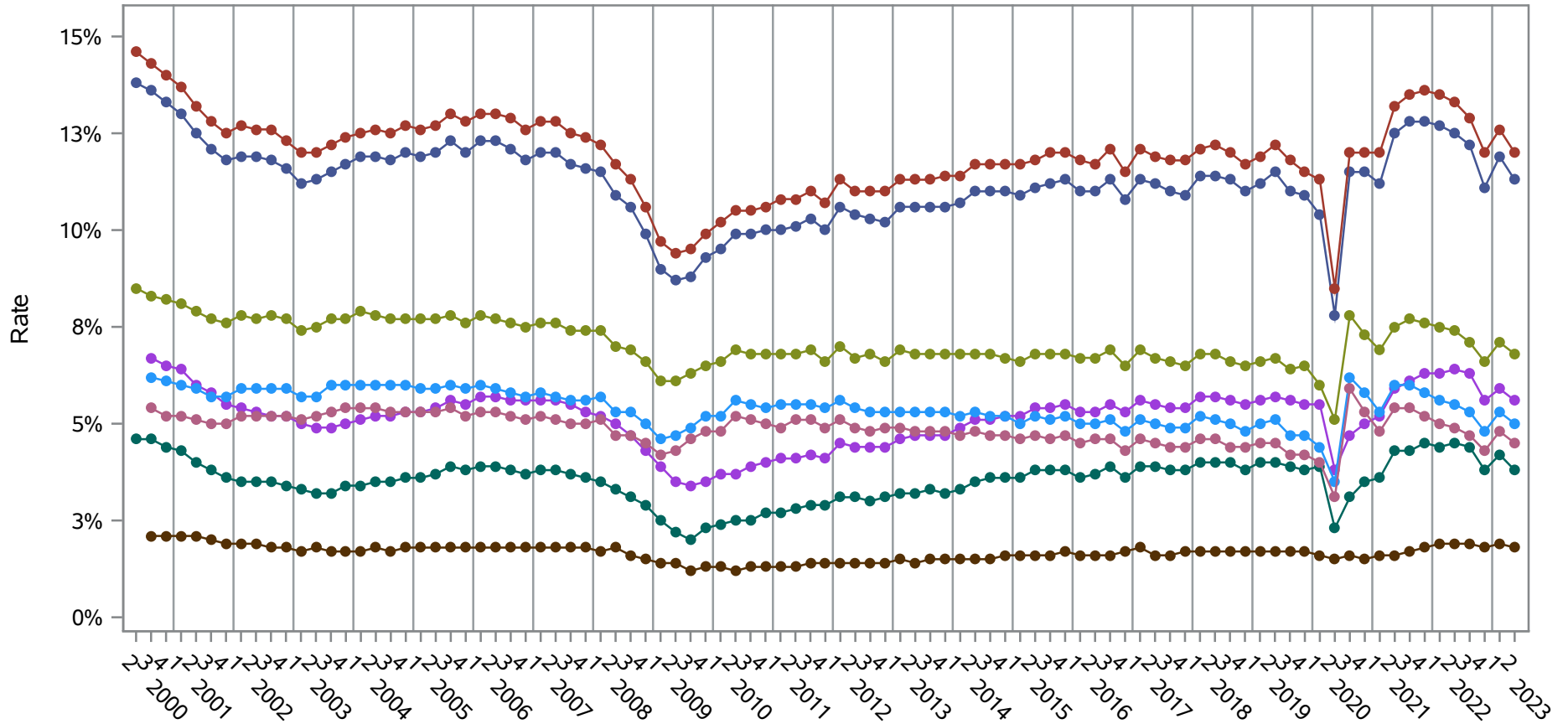
Accessions from and Separations to Persistent Nonemployment, and Job-to-Job Accessions and Separations (Seasonally Adjusted)



- Series Key
- Main Job Accessions - Persistent Nonemployment Spell - Rate
  - Main Job Separations - Persistent Nonemployment Spell - Rate
  - Job-to-Job Accessions - Rate
  - Job-to-Job Separations - Rate

Source: United States Census Bureau, Job-to-Job Flow Statistics, Release R2024Q2 (Beta)

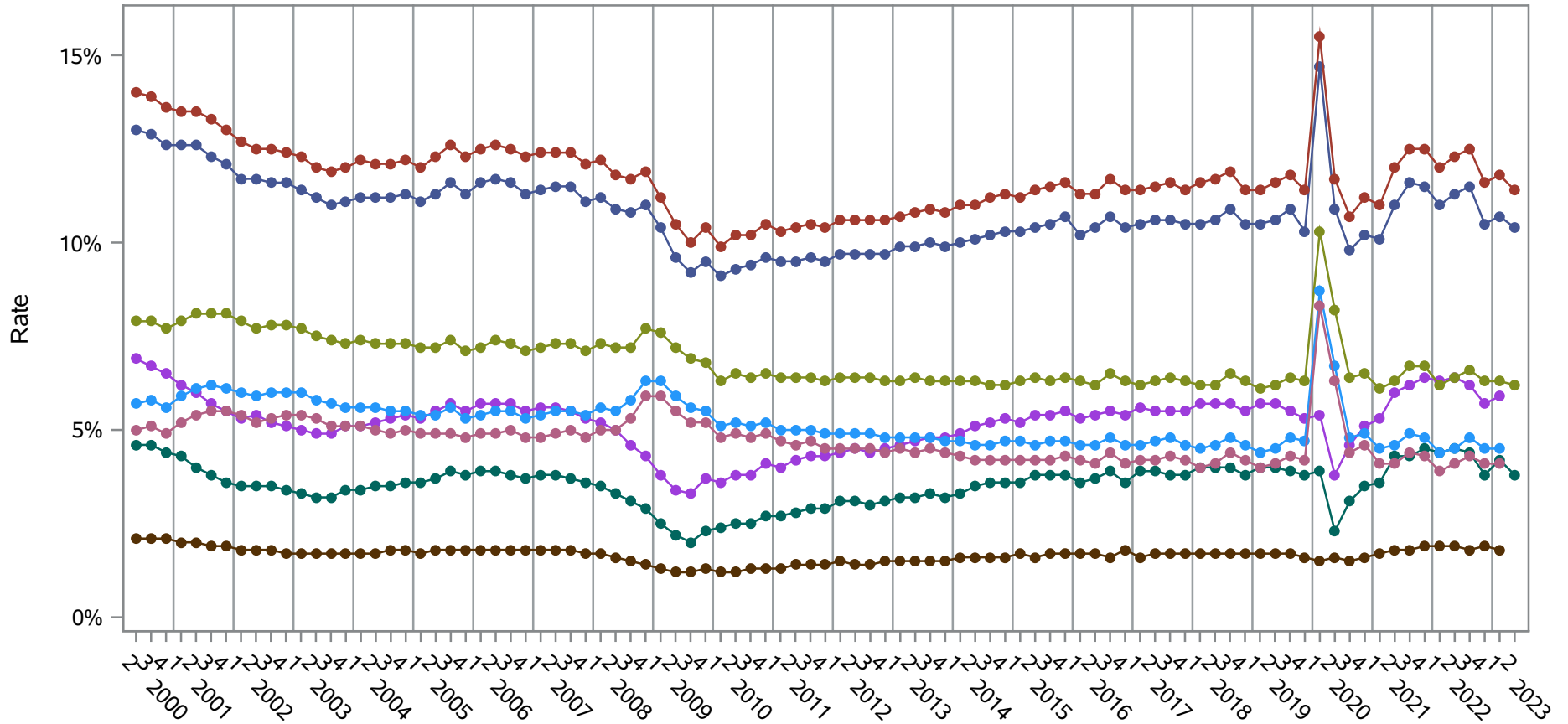
## National J2J Rates All Measures of Accessions/Start of Main Job (Seasonally Adjusted)



- Series Key
- Main Job Accessions - Rate
  - Main Job Starts - Rate
  - EE Accessions - Rate
  - AQ Accessions - Short Duration Nonemployment Spell - Rate
  - Job-to-Job Accessions - Rate
  - Main Job Accessions - Any Nonemployment Spell - Rate
  - Main Job Accessions - Persistent Nonemployment Spell - Rate
  - Main Job Accessions - Full-qr Nonemployment Spell - Rate

**Source: United States Census Bureau, Job-to-Job Flow Statistics, Release R2024Q2 (Beta)**

## National J2J Rates All Measures of Separations/End of Main Job (Seasonally Adjusted)



- Series Key
- Main Job Separations - Rate
  - Main Job Ends - Rate
  - EE Separations - Rate
  - AQ Separations - Short Duration Nonemployment Spell - Rate
  - Job-to-Job Separations - Rate
  - Main Job Separations - Any Nonemployment Spell - Rate
  - Main Job Separations - Persistent Nonemployment Spell - Rate
  - Main Job Separations - Full-qr Nonemployment Spell - Rate

**Source: United States Census Bureau, Job-to-Job Flow Statistics, Release R2024Q2 (Beta)**