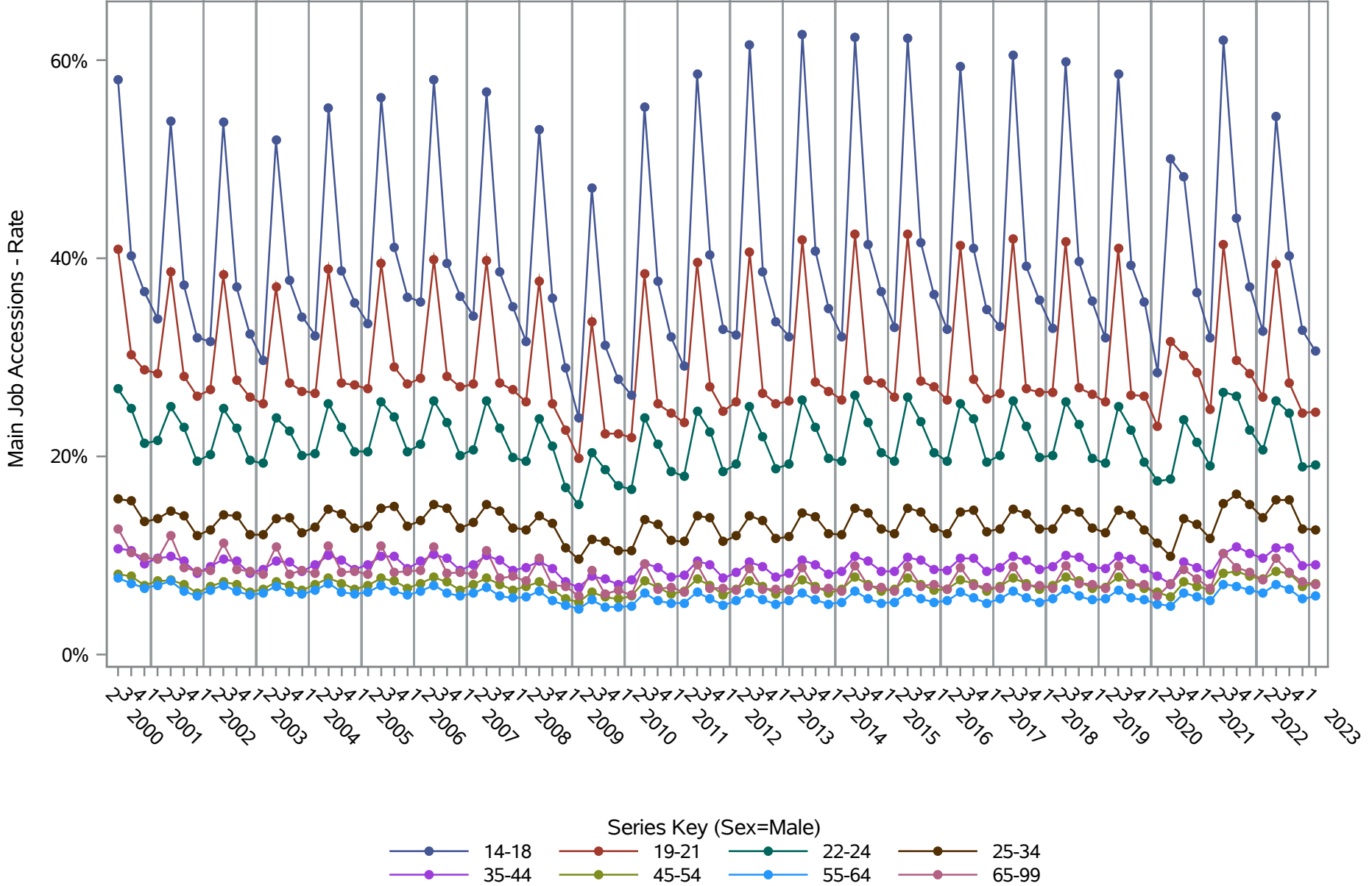


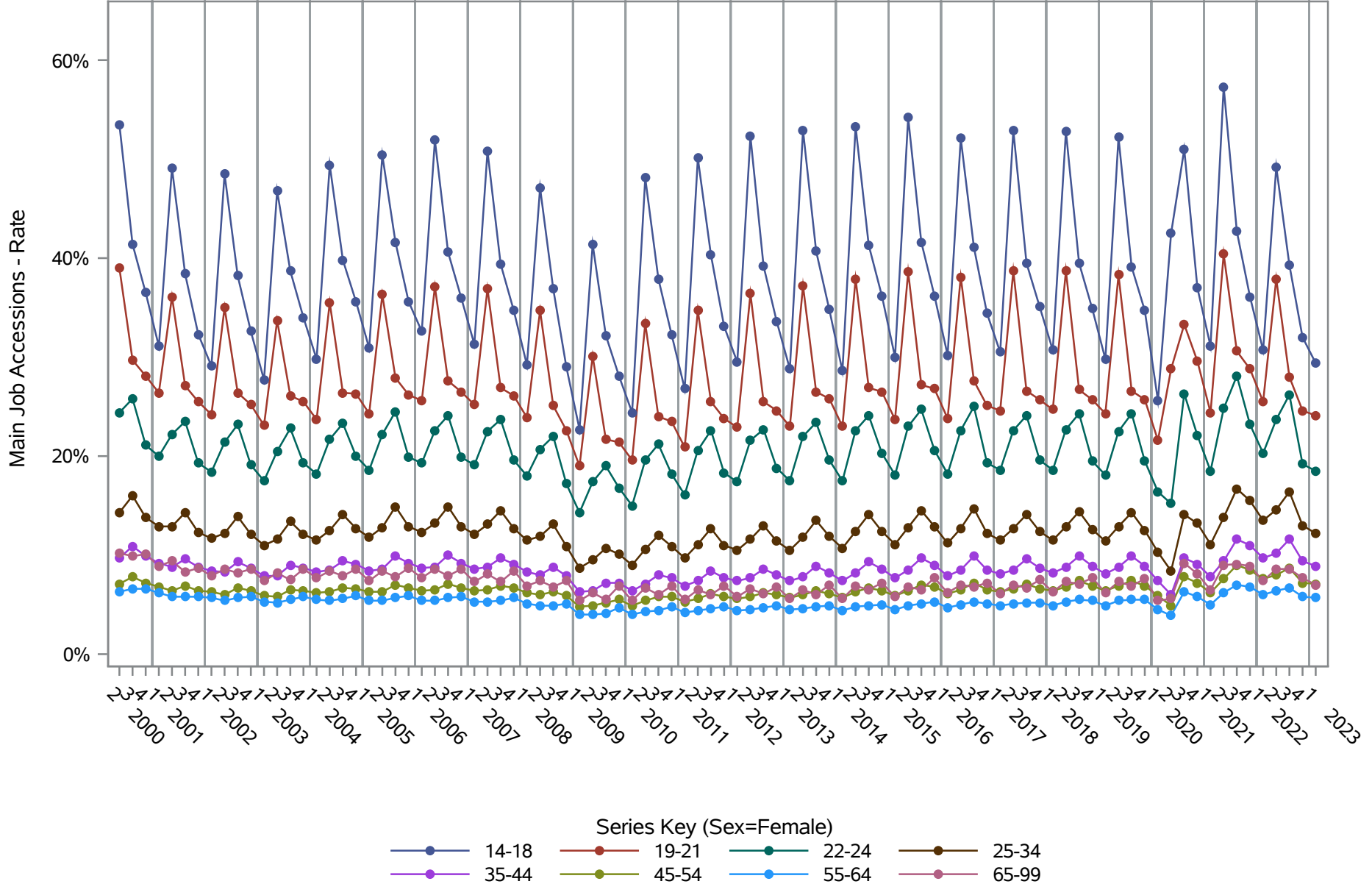
National J2J Rates

Main Job Accessions (Not Seasonally Adjusted) by Sex and Age (1 of 2) Sex=Male



Source: United States Census Bureau, Job-to-Job Flow Statistics, Release R2024Q1 (Beta)

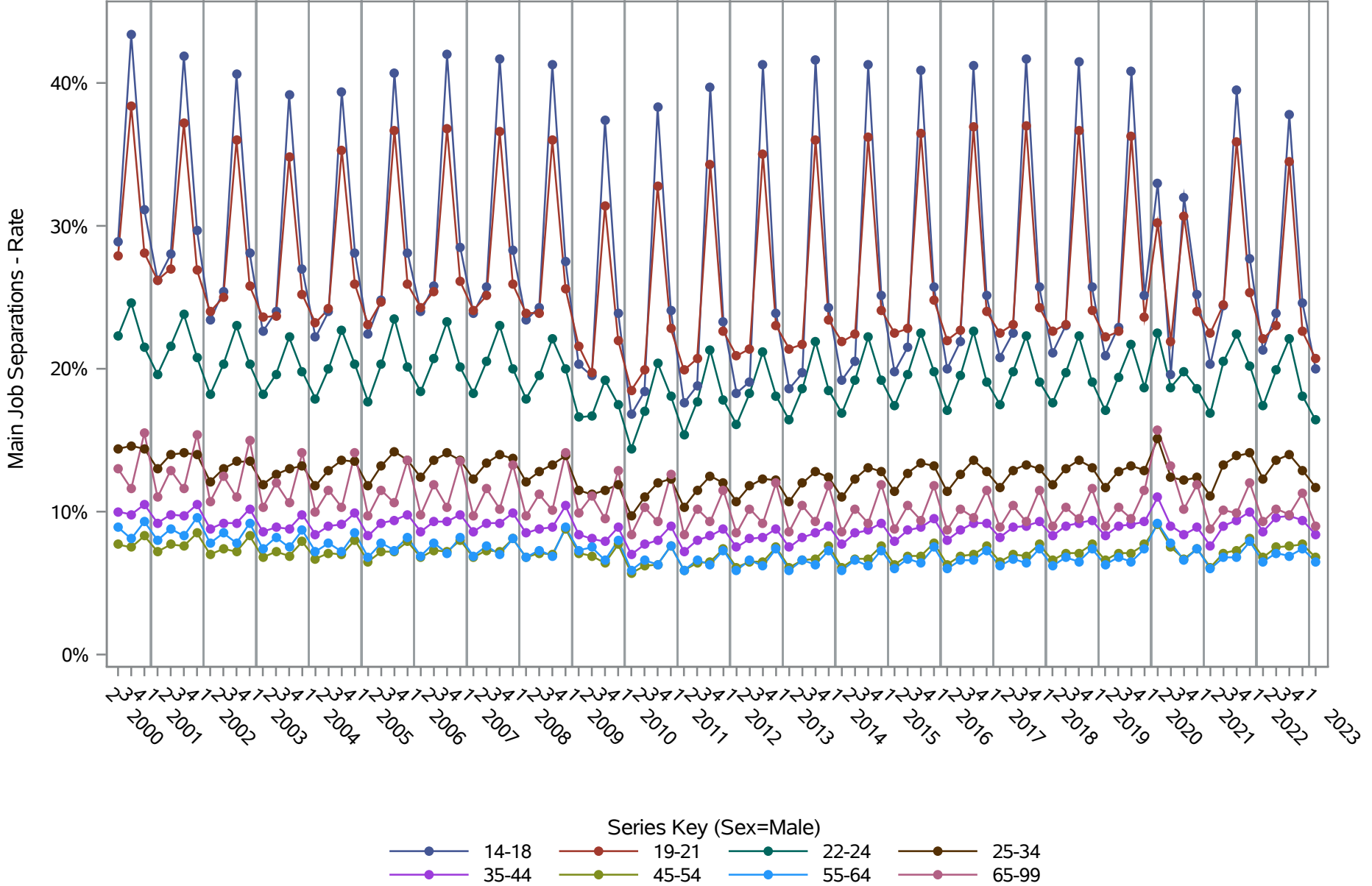
National J2J Rates
Main Job Accessions (Not Seasonally Adjusted)
by Sex and Age (2 of 2) Sex=Female



Source: United States Census Bureau, Job-to-Job Flow Statistics, Release R2024Q1 (Beta)

National J2J Rates

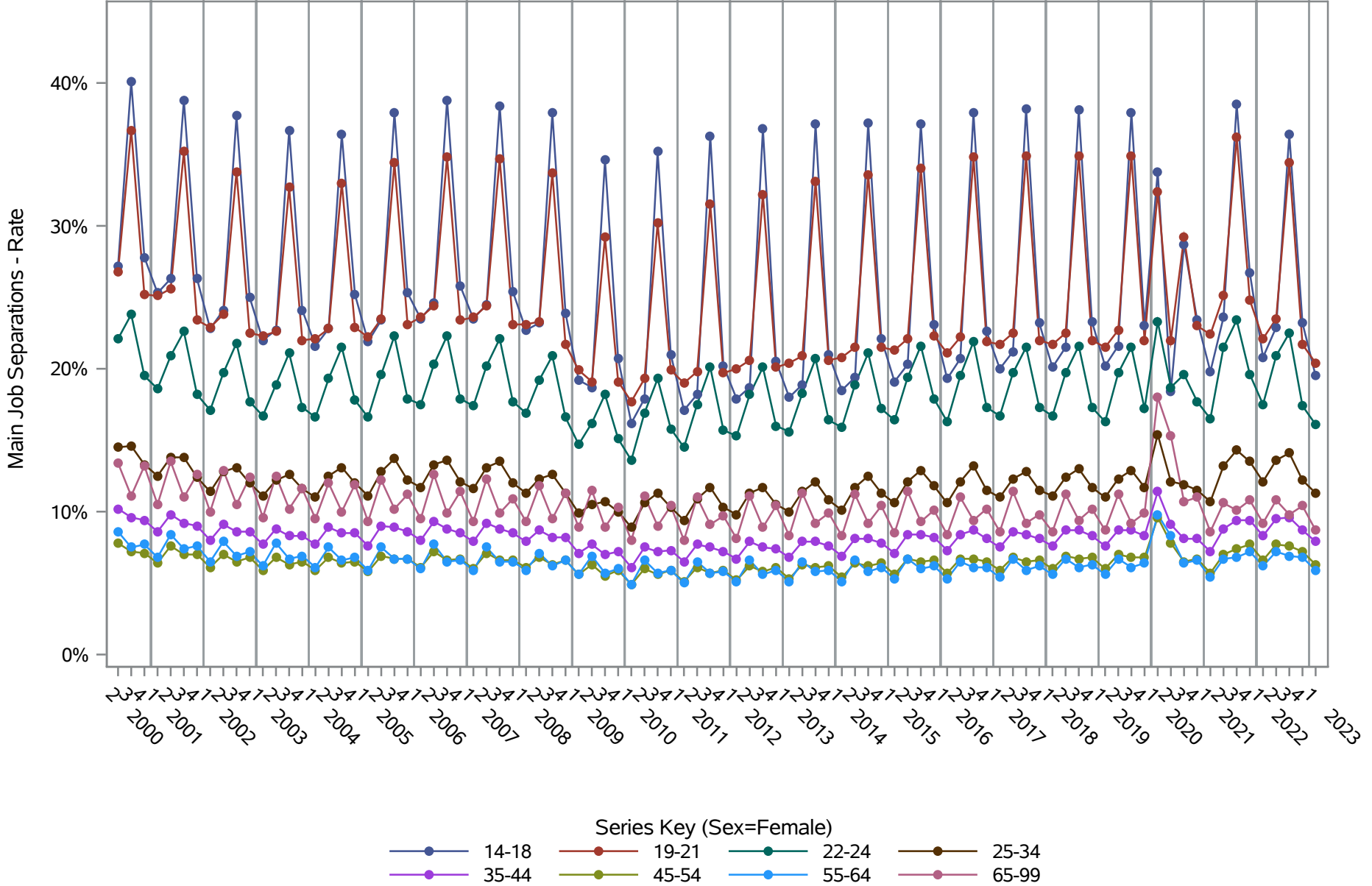
Main Job Separations (Not Seasonally Adjusted) by Sex and Age (1 of 2) Sex=Male



Source: United States Census Bureau, Job-to-Job Flow Statistics, Release R2024Q1 (Beta)

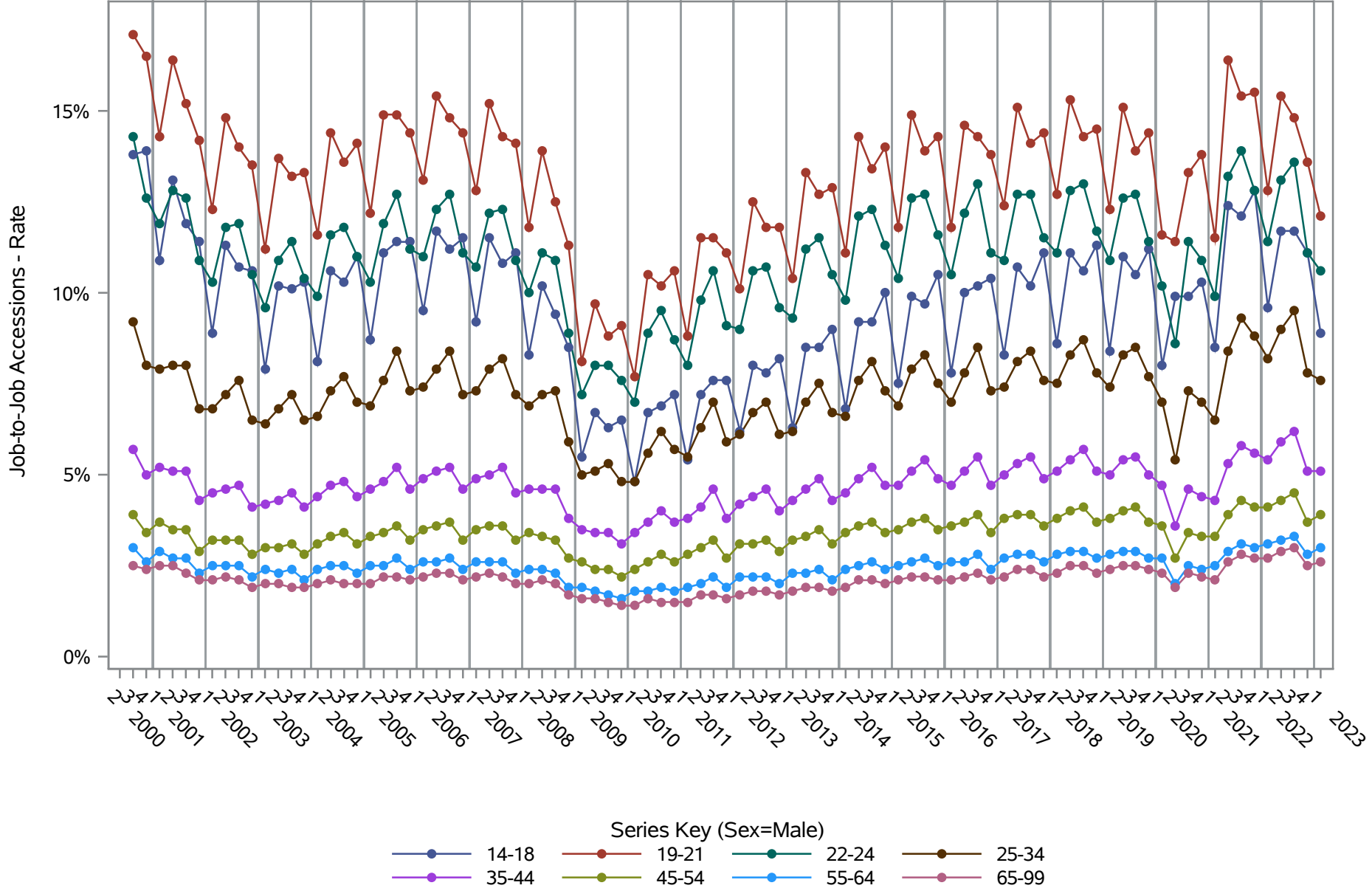
National J2J Rates

Main Job Separations (Not Seasonally Adjusted) by Sex and Age (2 of 2) Sex=Female



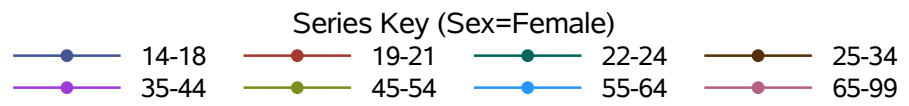
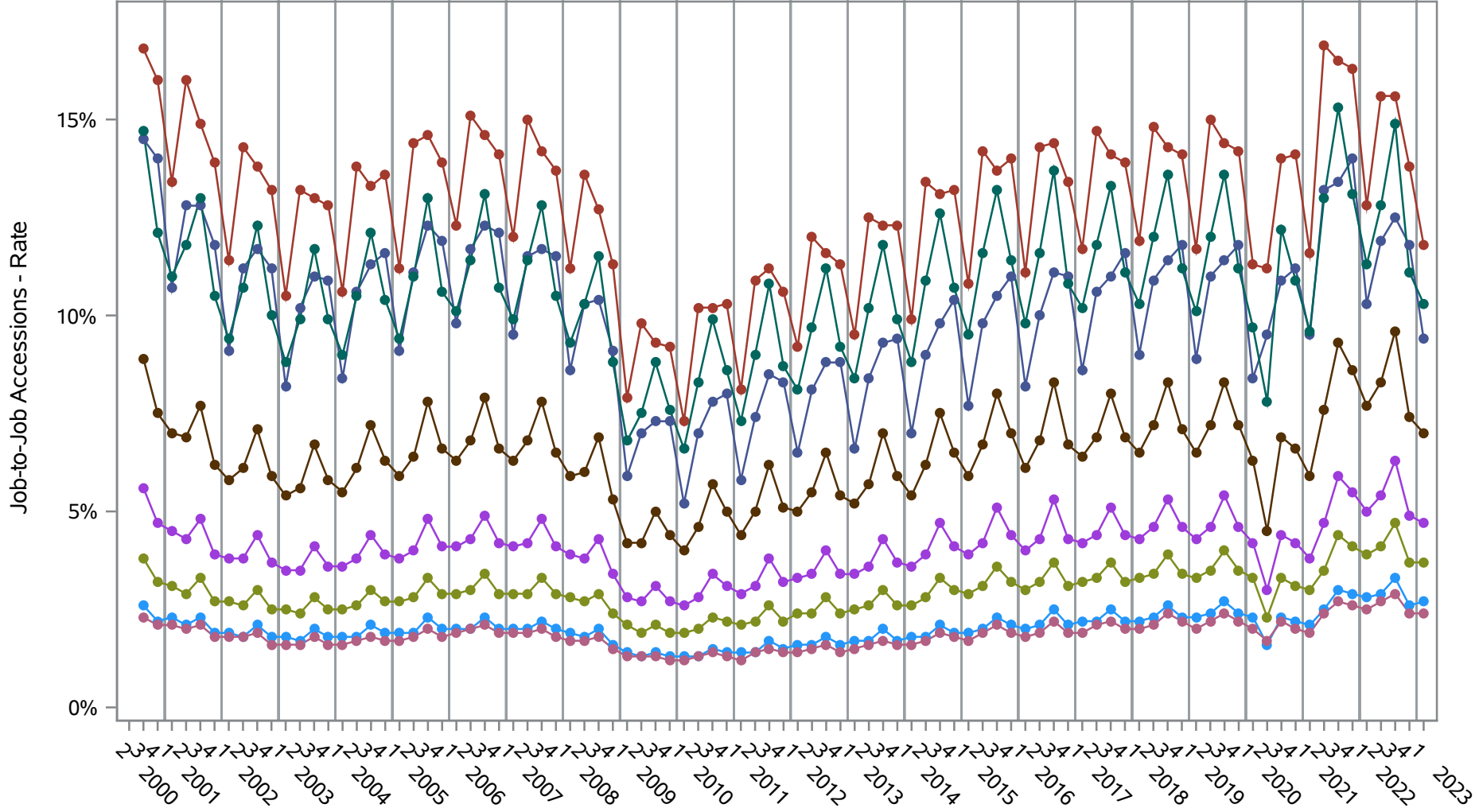
Source: United States Census Bureau, Job-to-Job Flow Statistics, Release R2024Q1 (Beta)

National J2J Rates
Job-to-Job Accessions (Not Seasonally Adjusted)
by Sex and Age (1 of 2) Sex=Male



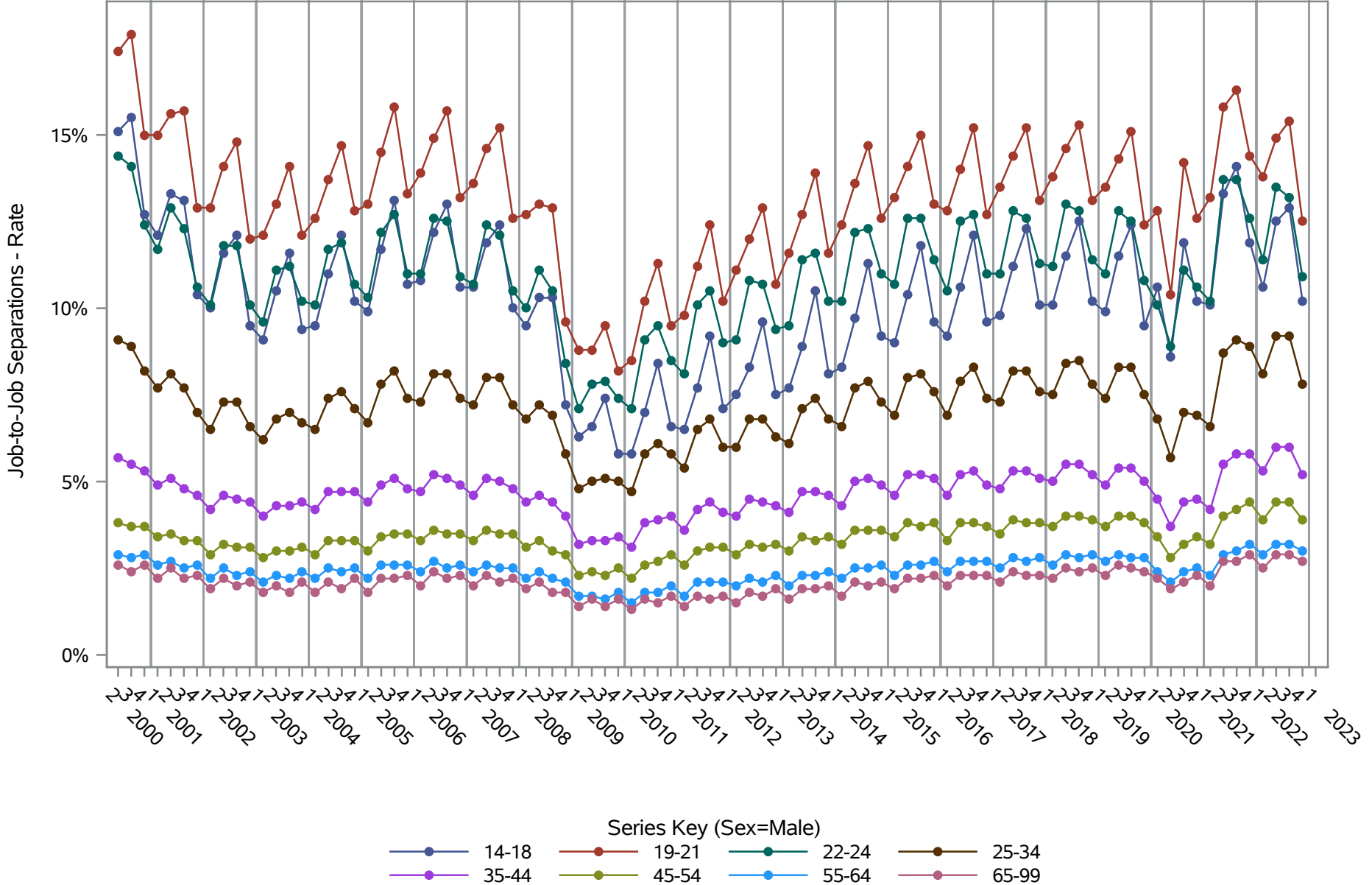
Source: United States Census Bureau, Job-to-Job Flow Statistics, Release R2024Q1 (Beta)

National J2J Rates
Job-to-Job Accessions (Not Seasonally Adjusted)
by Sex and Age (2 of 2) Sex=Female



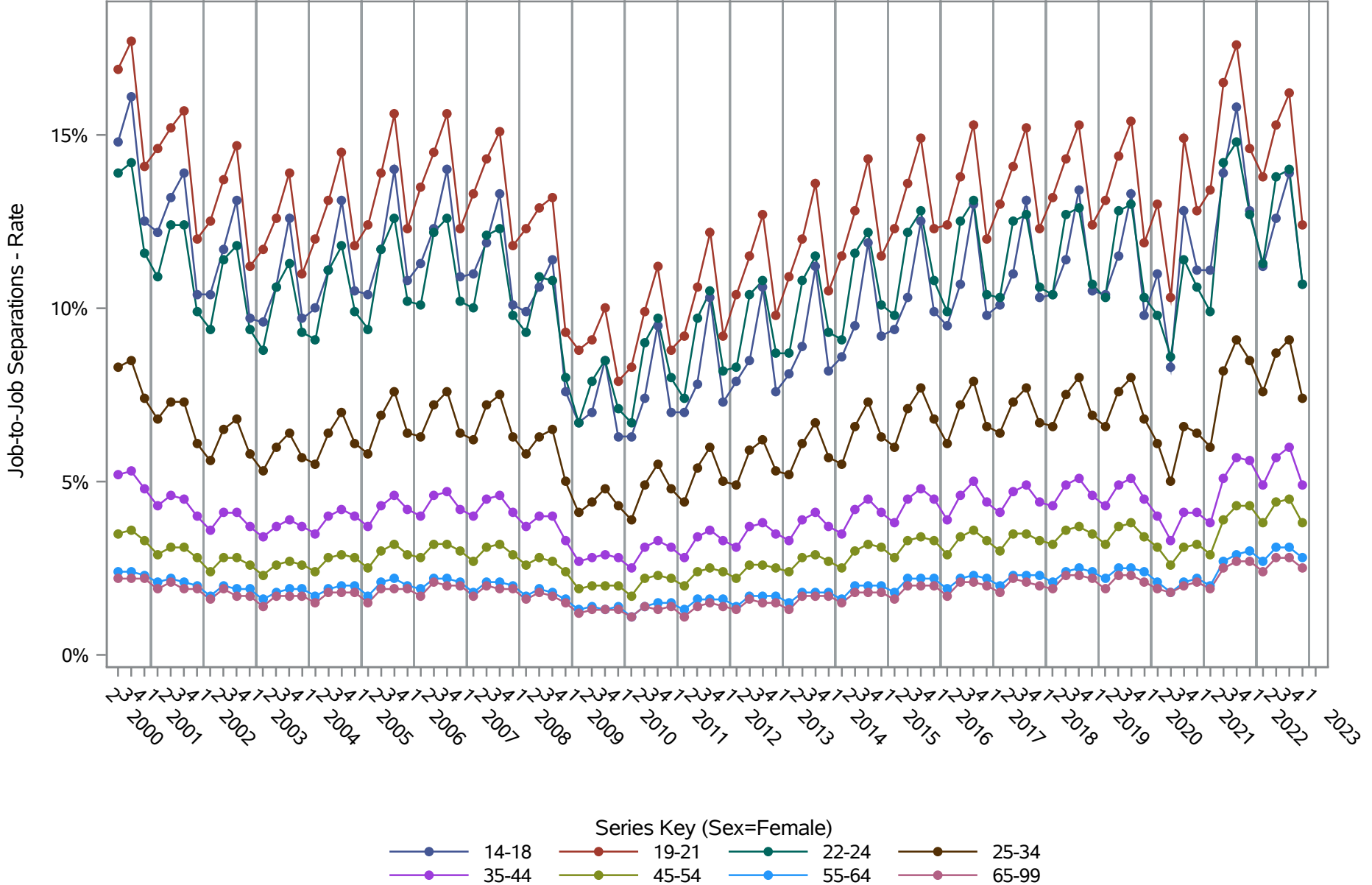
Source: United States Census Bureau, Job-to-Job Flow Statistics, Release R2024Q1 (Beta)

National J2J Rates
Job-to-Job Separations (Not Seasonally Adjusted)
by Sex and Age (1 of 2) Sex=Male



Source: United States Census Bureau, Job-to-Job Flow Statistics, Release R2024Q1 (Beta)

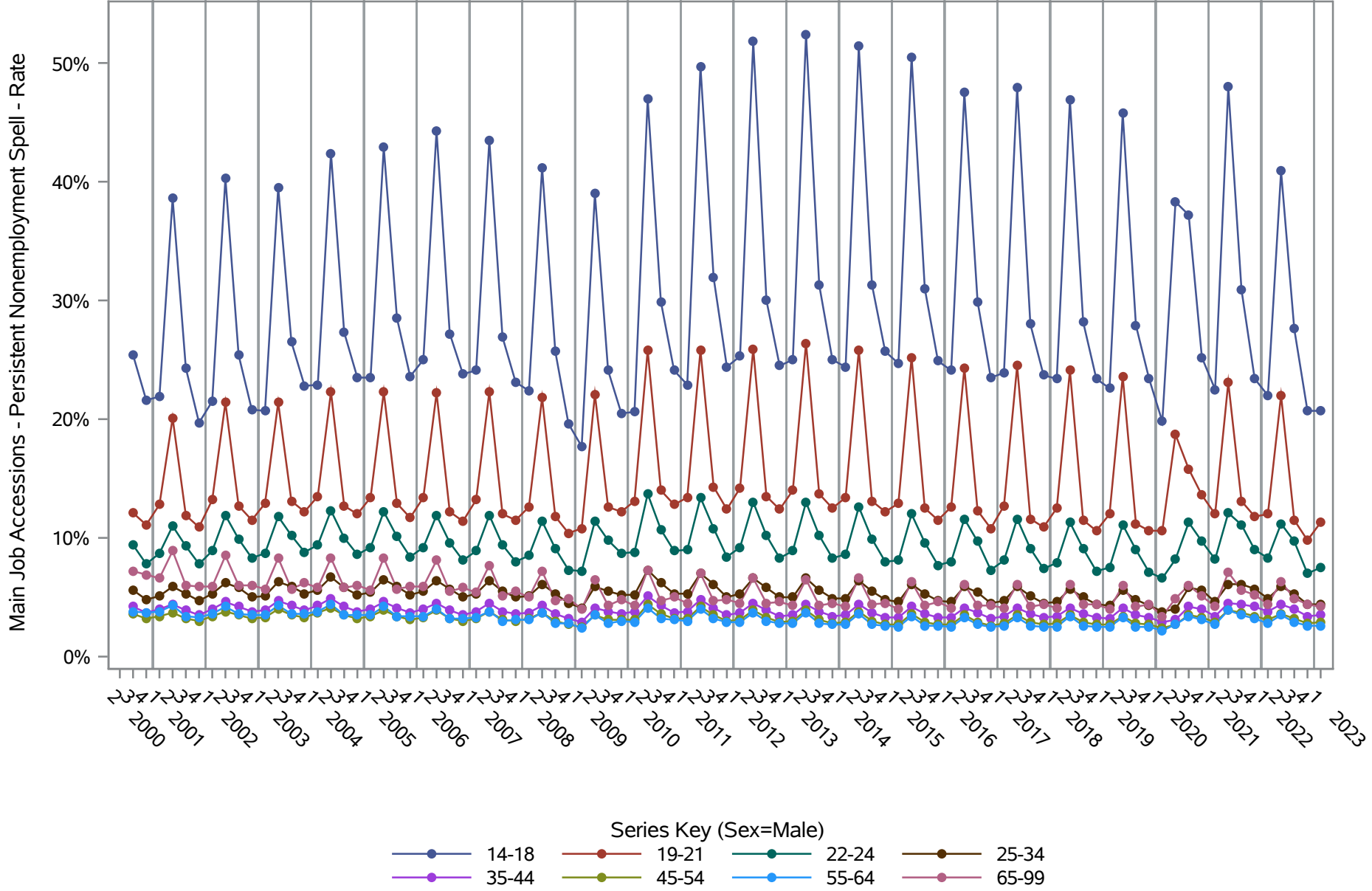
National J2J Rates
Job-to-Job Separations (Not Seasonally Adjusted)
by Sex and Age (2 of 2) Sex=Female



Source: United States Census Bureau, Job-to-Job Flow Statistics, Release R2024Q1 (Beta)

National J2J Rates

Main Job Accessions - Persistent Nonemployment Spell (Not Seasonally Adjusted) by Sex and Age (1 of 2) Sex=Male

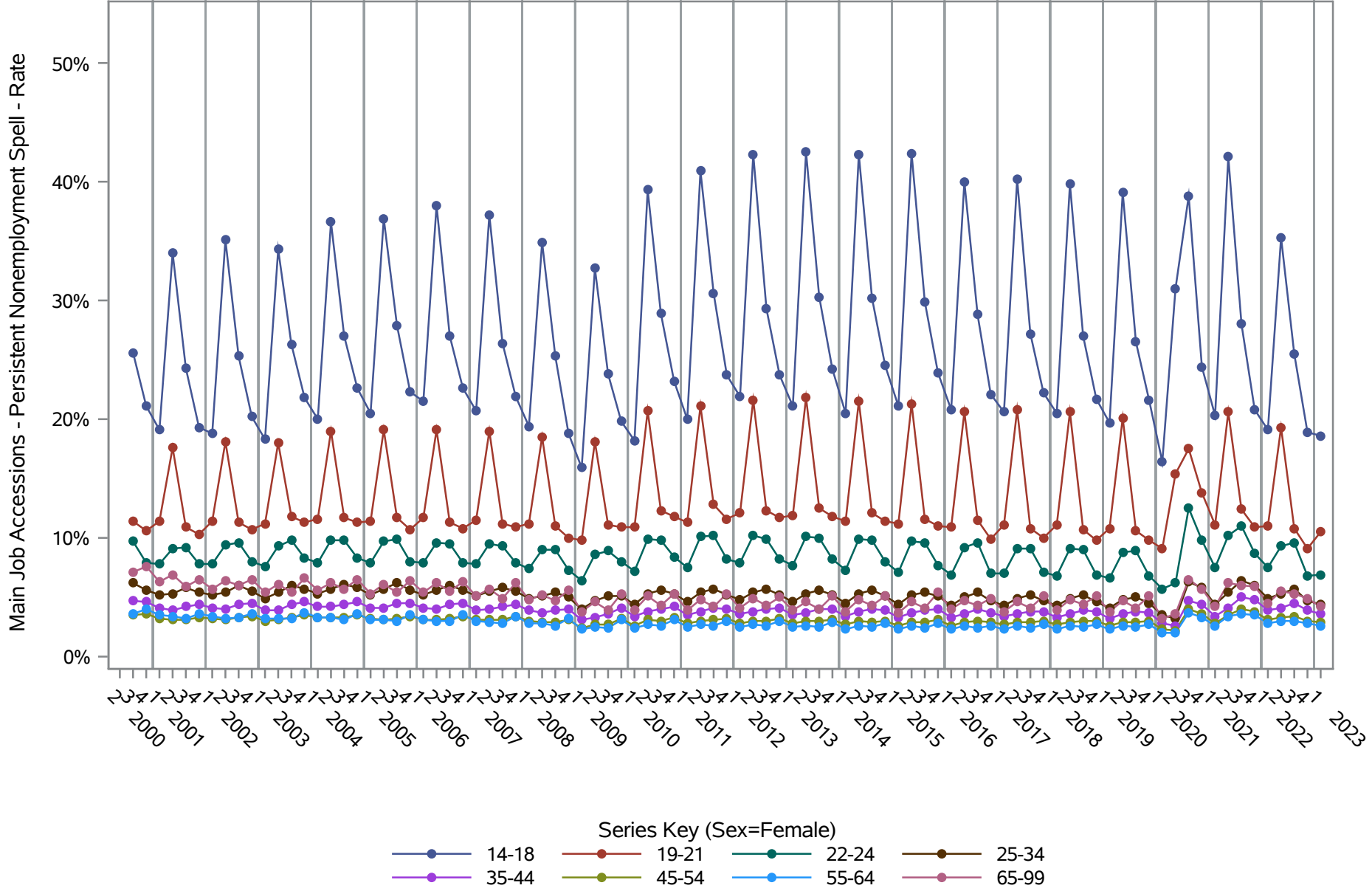


Source: United States Census Bureau, Job-to-Job Flow Statistics, Release R2024Q1 (Beta)

National J2J Rates

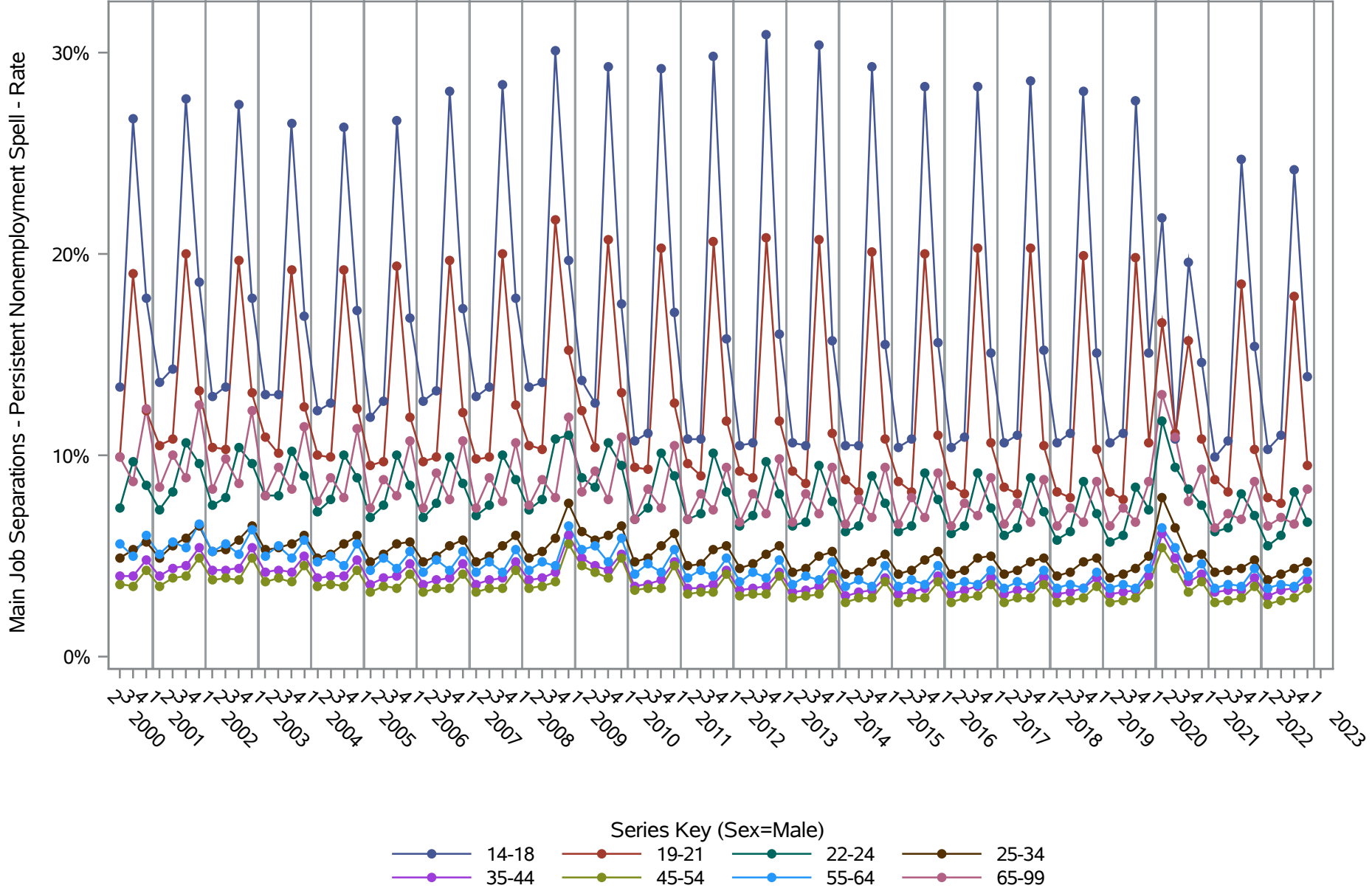
Main Job Accessions - Persistent Nonemployment Spell (Not Seasonally Adjusted)

by Sex and Age (2 of 2) Sex=Female



Source: United States Census Bureau, Job-to-Job Flow Statistics, Release R2024Q1 (Beta)

National J2J Rates
Main Job Separations - Persistent Nonemployment Spell (Not Seasonally Adjusted)
by Sex and Age (1 of 2) Sex=Male

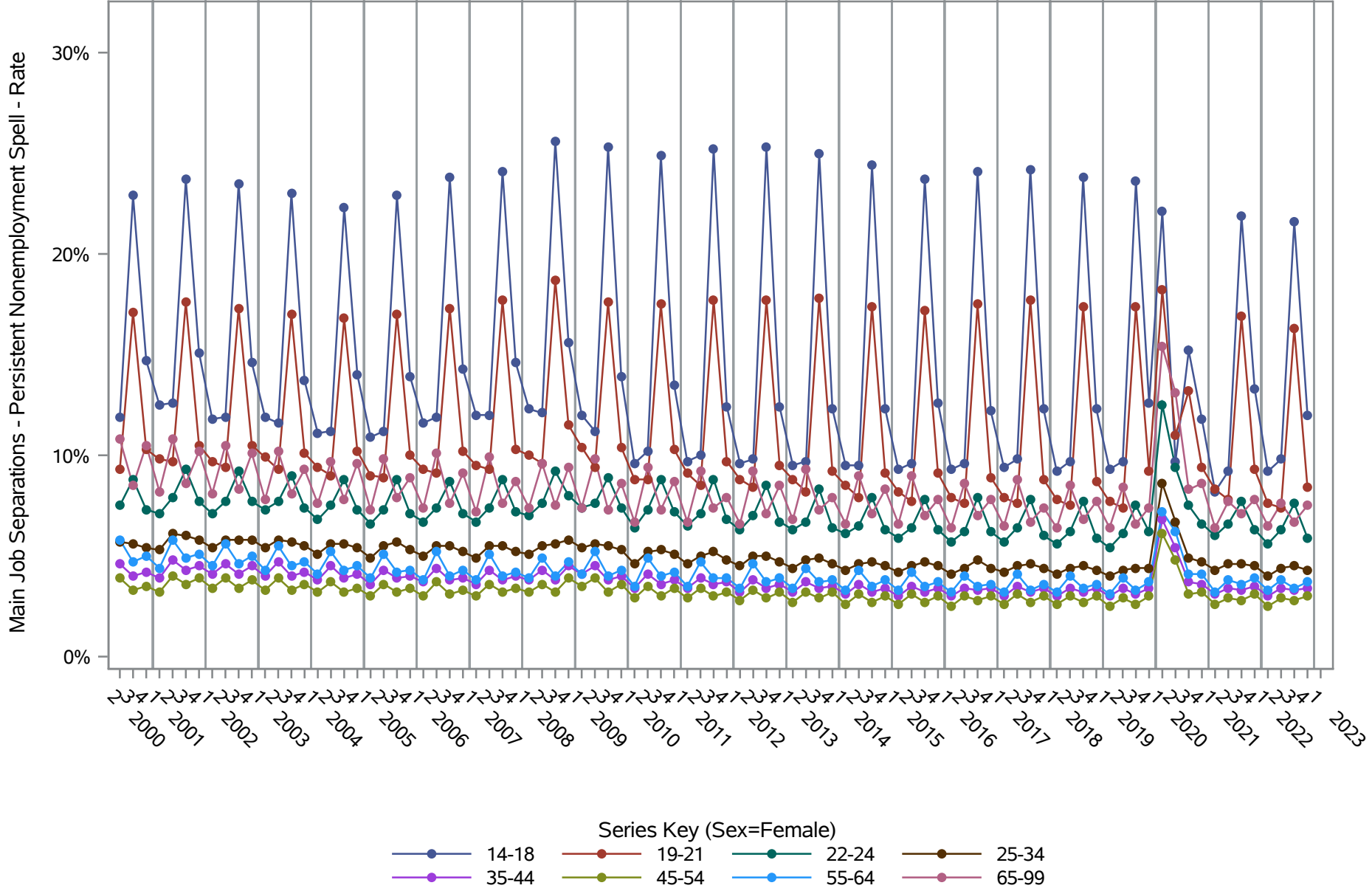


Source: United States Census Bureau, Job-to-Job Flow Statistics, Release R2024Q1 (Beta)

National J2J Rates

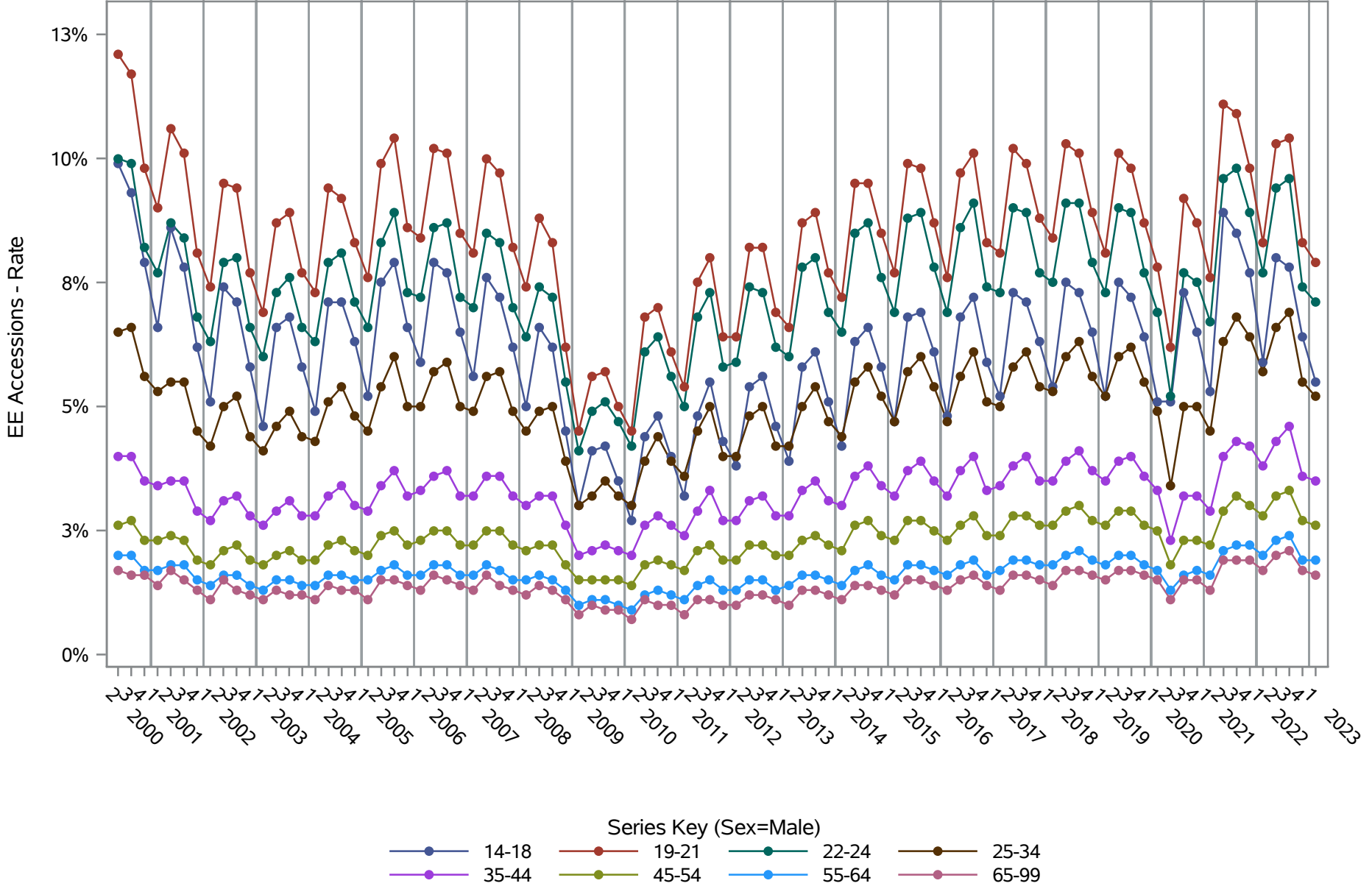
Main Job Separations - Persistent Nonemployment Spell (Not Seasonally Adjusted)

by Sex and Age (2 of 2) Sex=Female



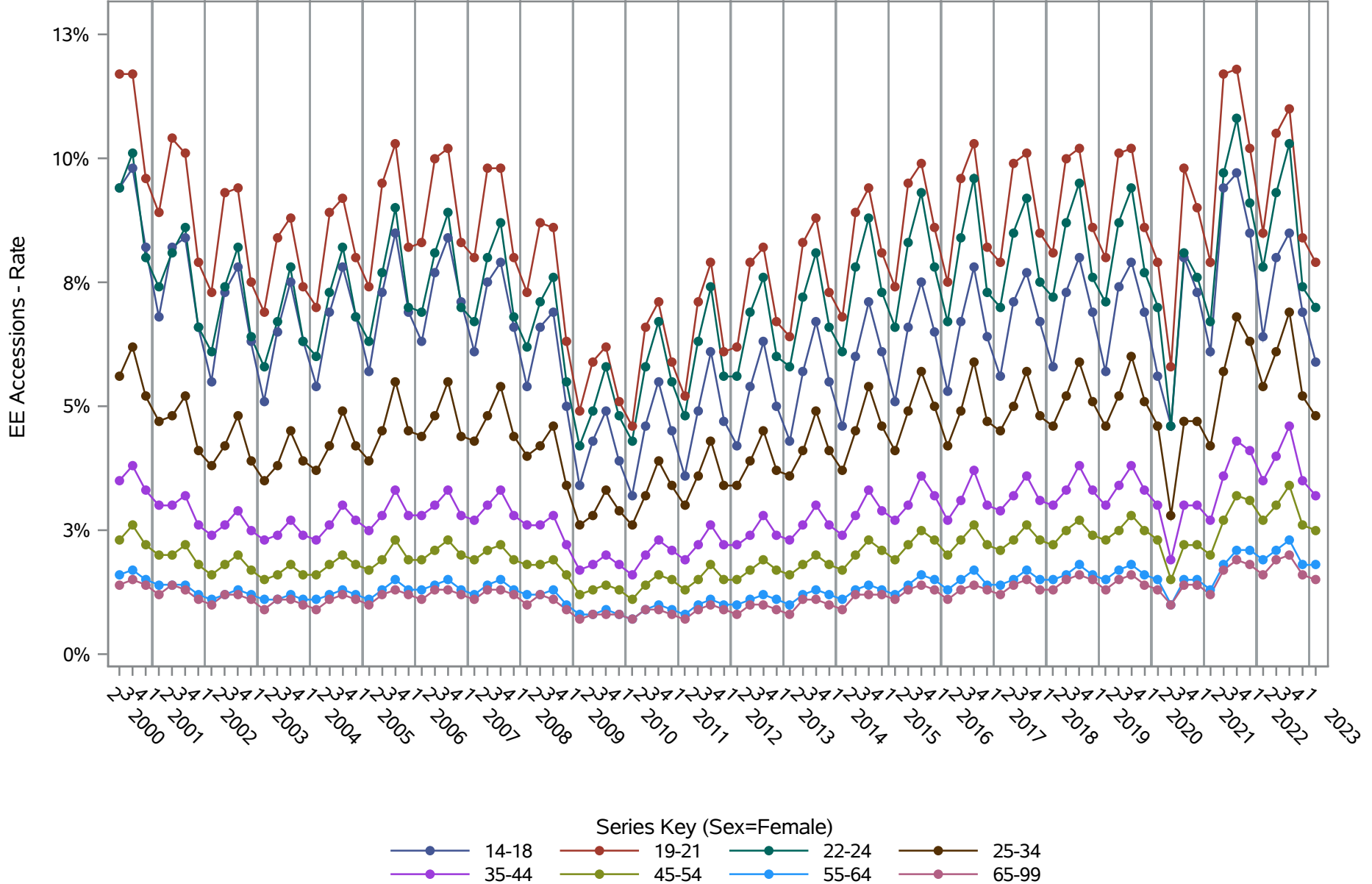
Source: United States Census Bureau, Job-to-Job Flow Statistics, Release R2024Q1 (Beta)

National J2J Rates
EE Accessions (Not Seasonally Adjusted)
by Sex and Age (1 of 2) Sex=Male



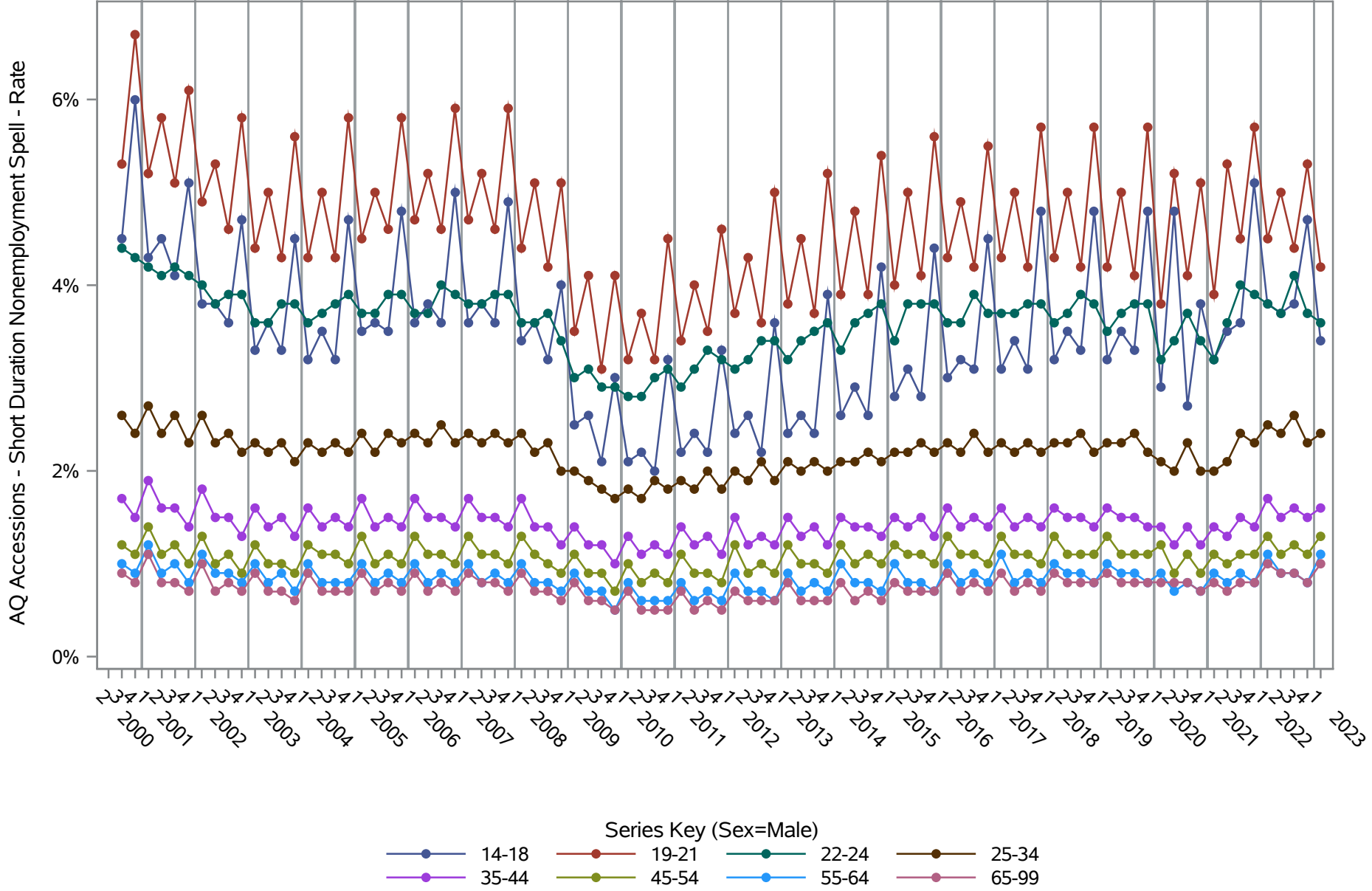
Source: United States Census Bureau, Job-to-Job Flow Statistics, Release R2024Q1 (Beta)

National J2J Rates
EE Accessions (Not Seasonally Adjusted)
by Sex and Age (2 of 2) Sex=Female



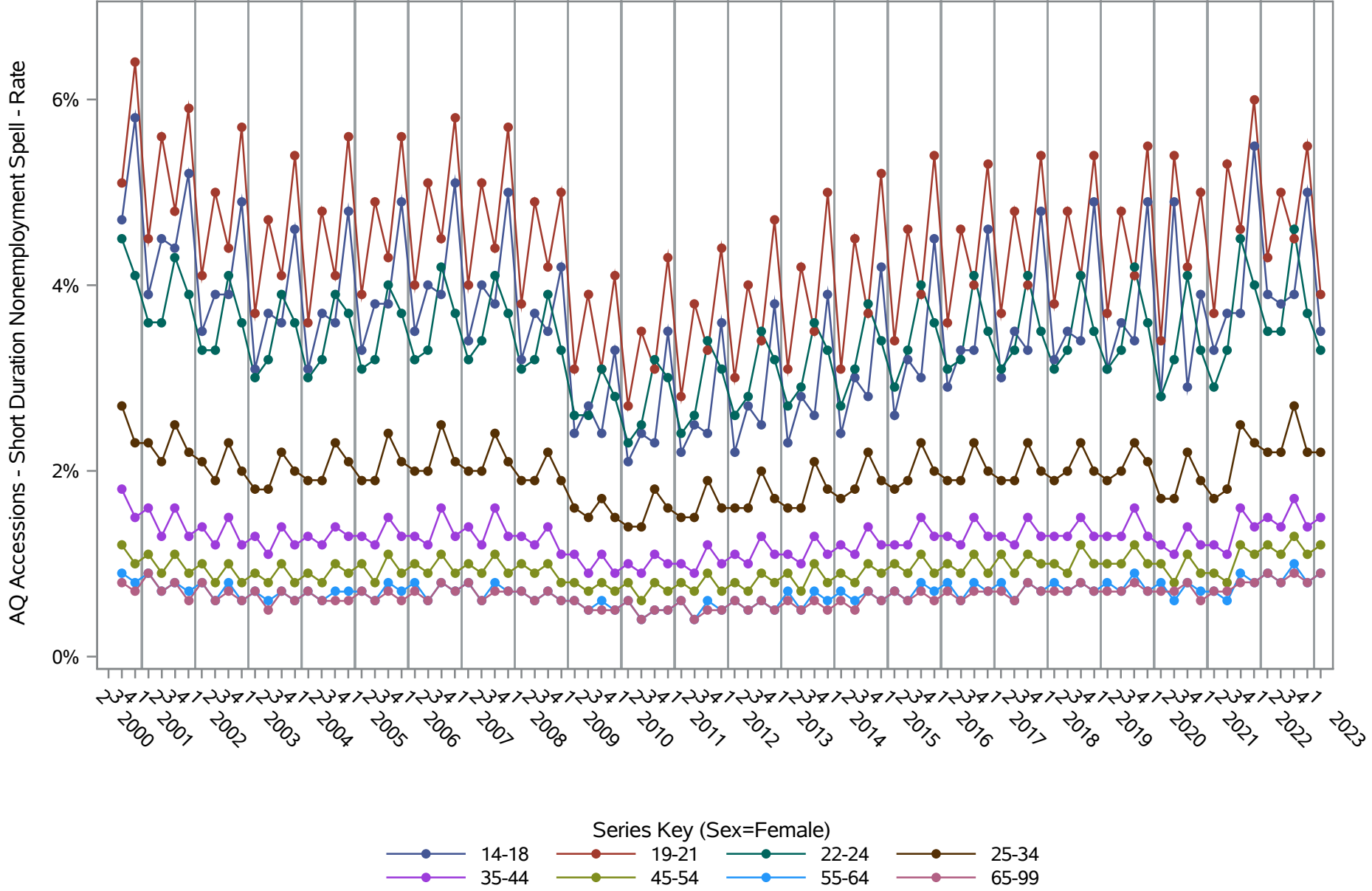
Source: United States Census Bureau, Job-to-Job Flow Statistics, Release R2024Q1 (Beta)

National J2J Rates
AQ Accessions - Short Duration Nonemployment Spell (Not Seasonally Adjusted)
by Sex and Age (1 of 2) Sex=Male



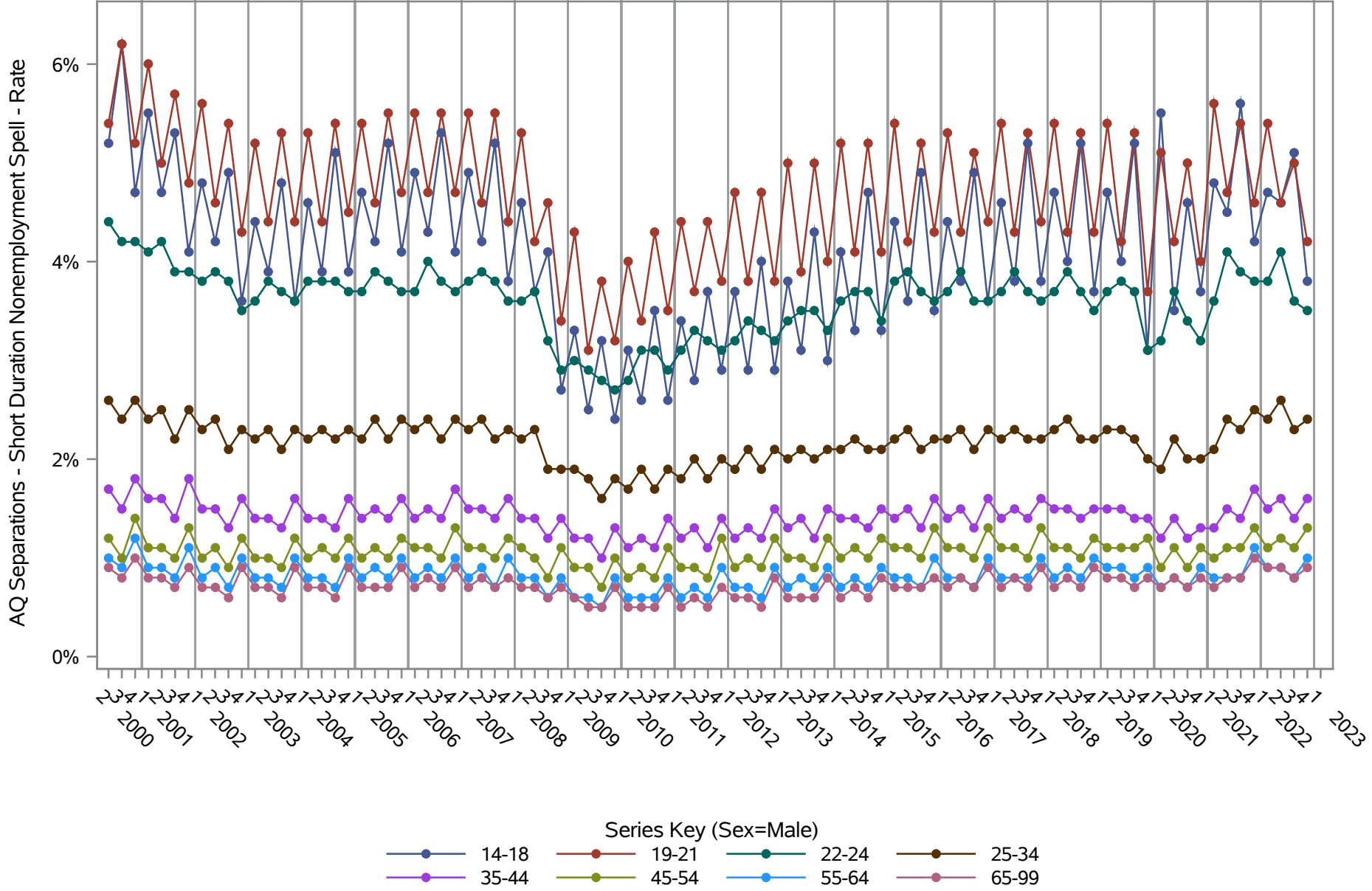
Source: United States Census Bureau, Job-to-Job Flow Statistics, Release R2024Q1 (Beta)

National J2J Rates
AQ Accessions - Short Duration Nonemployment Spell (Not Seasonally Adjusted)
by Sex and Age (2 of 2) Sex=Female



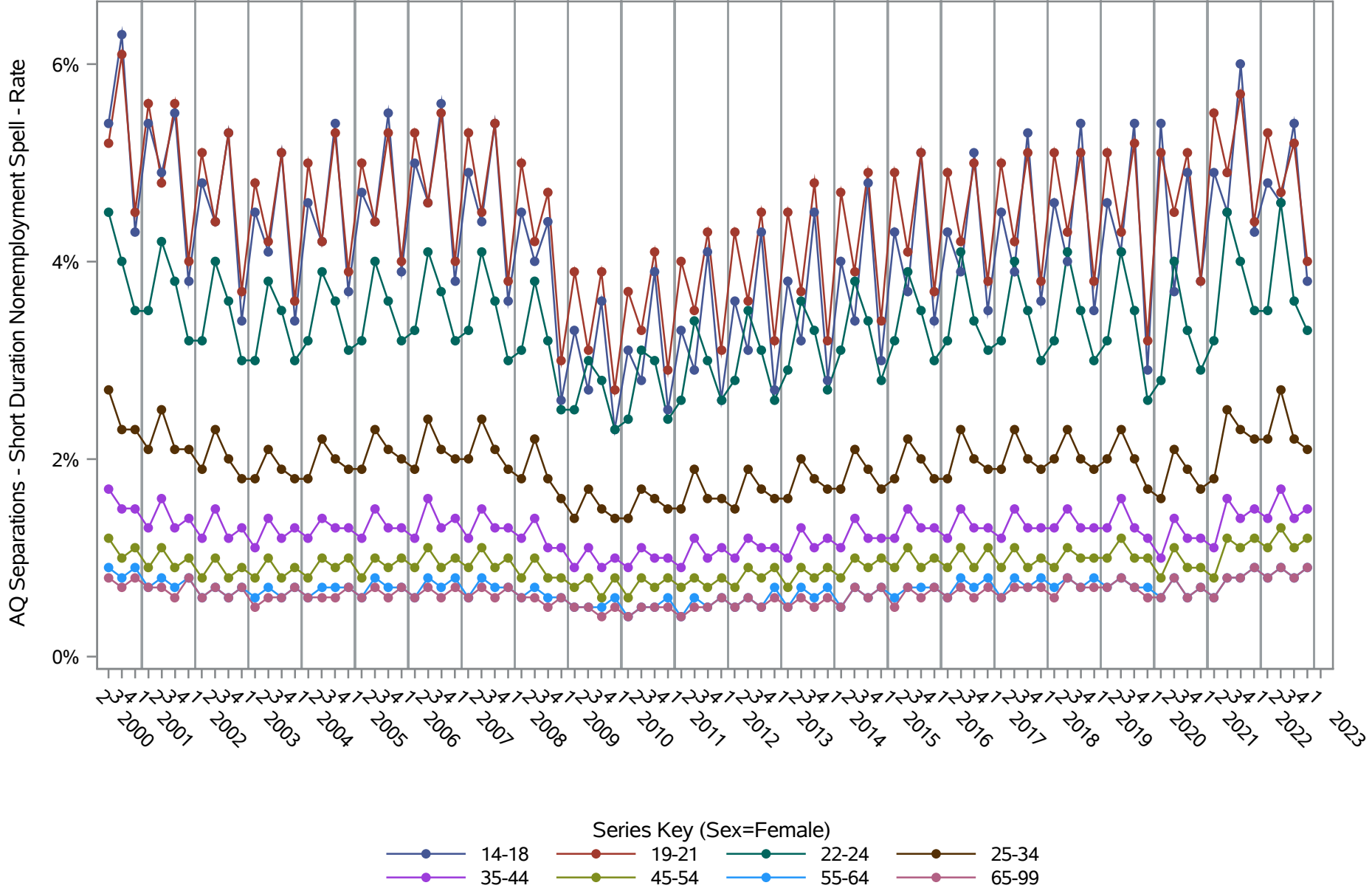
Source: United States Census Bureau, Job-to-Job Flow Statistics, Release R2024Q1 (Beta)

National J2J Rates
AQ Separations - Short Duration Nonemployment Spell (Not Seasonally Adjusted)
by Sex and Age (1 of 2) Sex=Male



Source: United States Census Bureau, Job-to-Job Flow Statistics, Release R2024Q1 (Beta)

National J2J Rates
AQ Separations - Short Duration Nonemployment Spell (Not Seasonally Adjusted)
by Sex and Age (2 of 2) Sex=Female



Source: United States Census Bureau, Job-to-Job Flow Statistics, Release R2024Q1 (Beta)