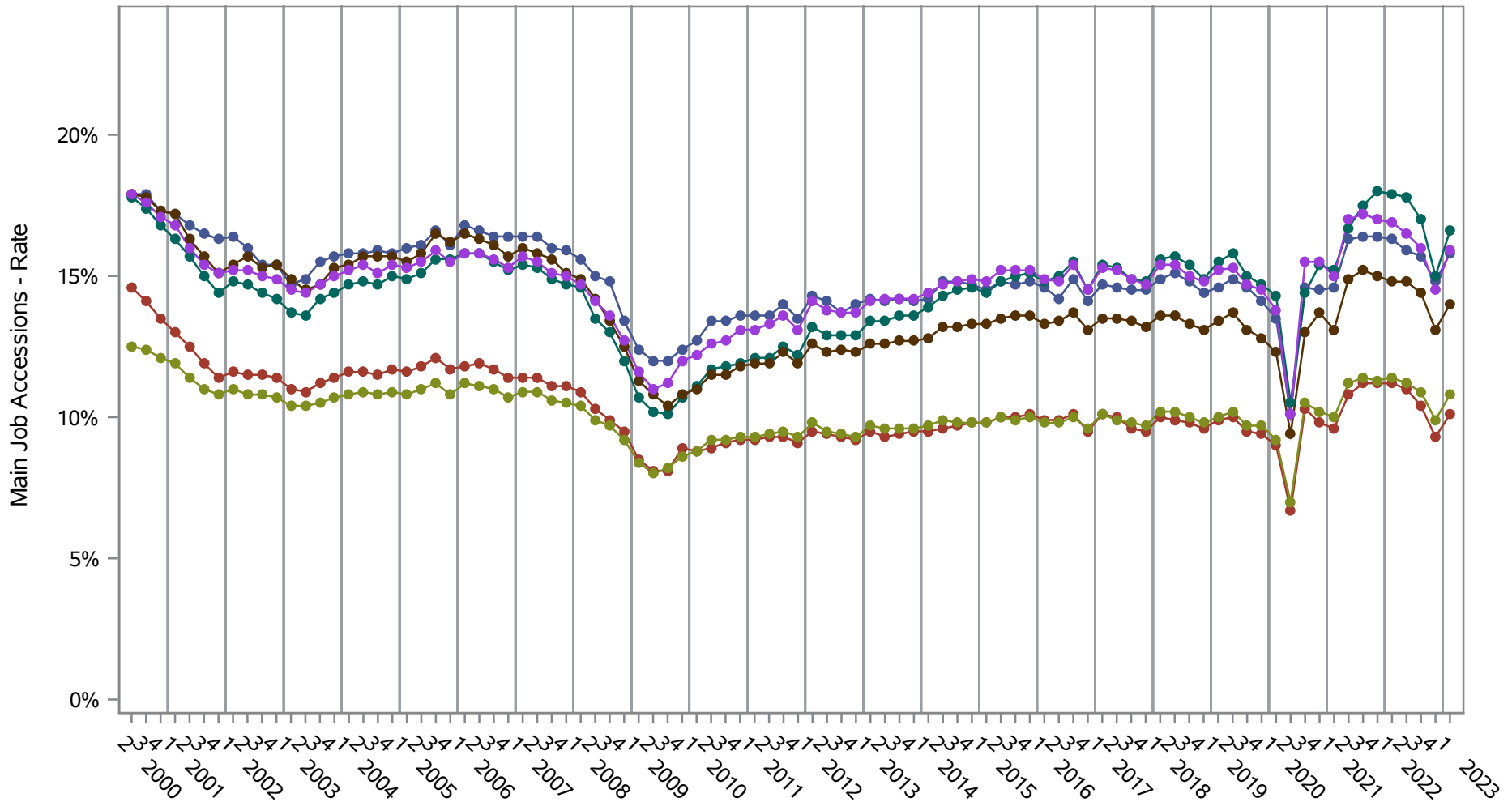


**National J2J Rates**  
**Main Job Accessions (Seasonally Adjusted)**  
*by Race and Ethnicity (1 of 2) Ethnicity=Not Hispanic or Latino*



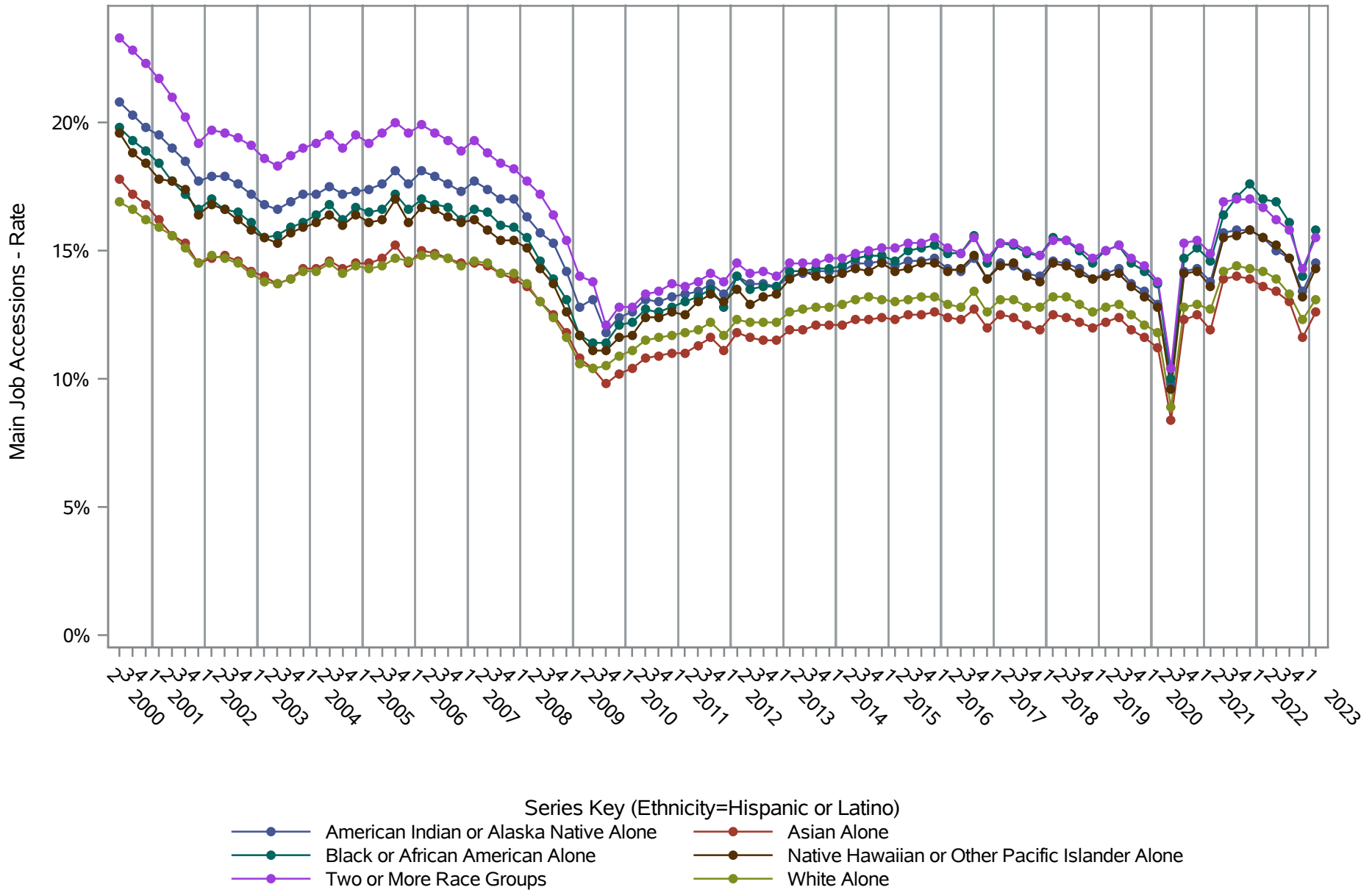
- Series Key (Ethnicity=Not Hispanic or Latino)
- American Indian or Alaska Native Alone
  - Asian Alone
  - Black or African American Alone
  - Native Hawaiian or Other Pacific Islander Alone
  - Two or More Race Groups
  - White Alone

**Source: United States Census Bureau, Job-to-Job Flow Statistics, Release R2024Q1 (Beta)**

# National J2J Rates

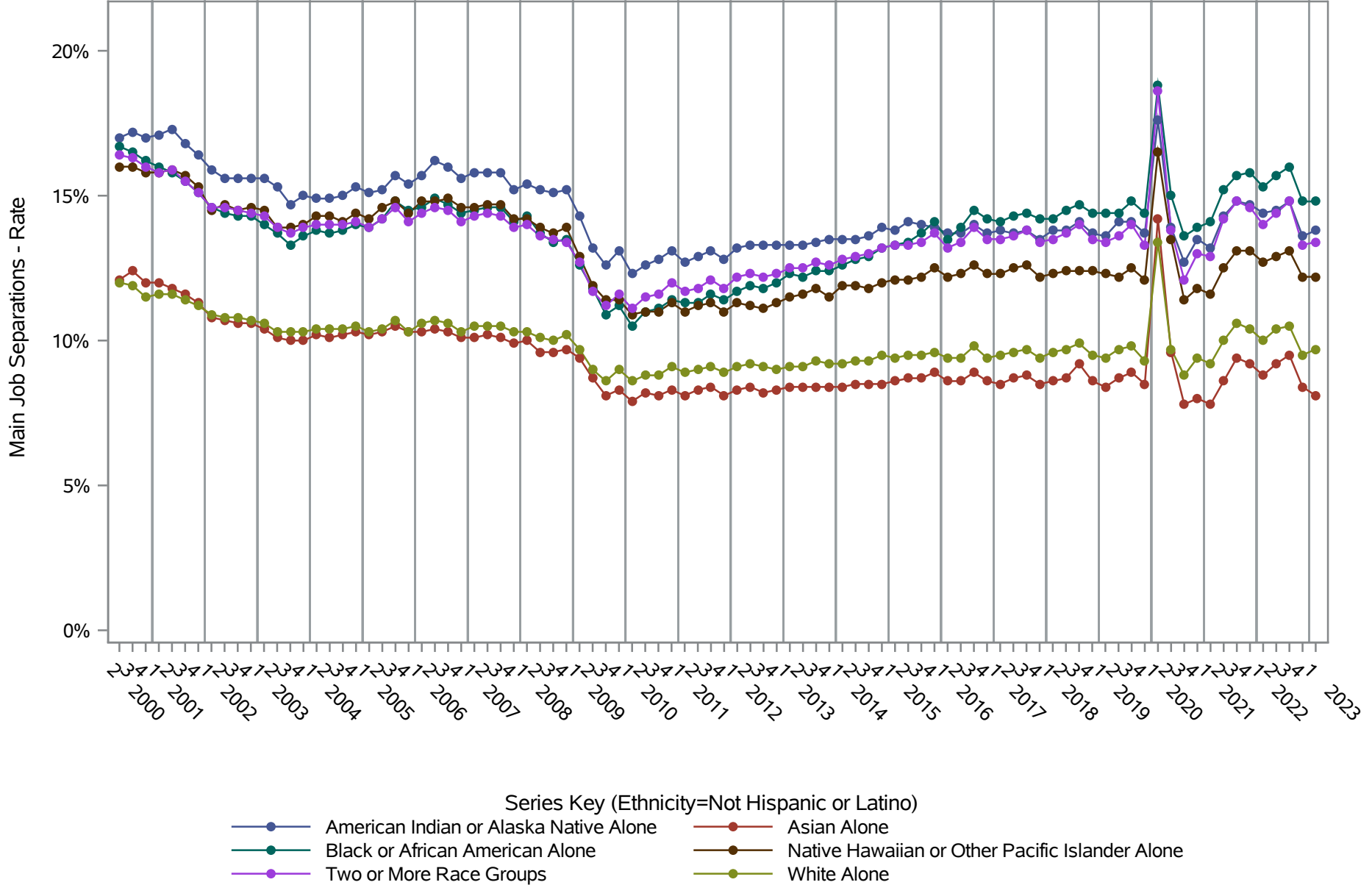
## Main Job Accessions (Seasonally Adjusted)

### by Race and Ethnicity (2 of 2) Ethnicity=Hispanic or Latino



Source: United States Census Bureau, Job-to-Job Flow Statistics, Release R2024Q1 (Beta)

**National J2J Rates**  
**Main Job Separations (Seasonally Adjusted)**  
*by Race and Ethnicity (1 of 2) Ethnicity=Not Hispanic or Latino*

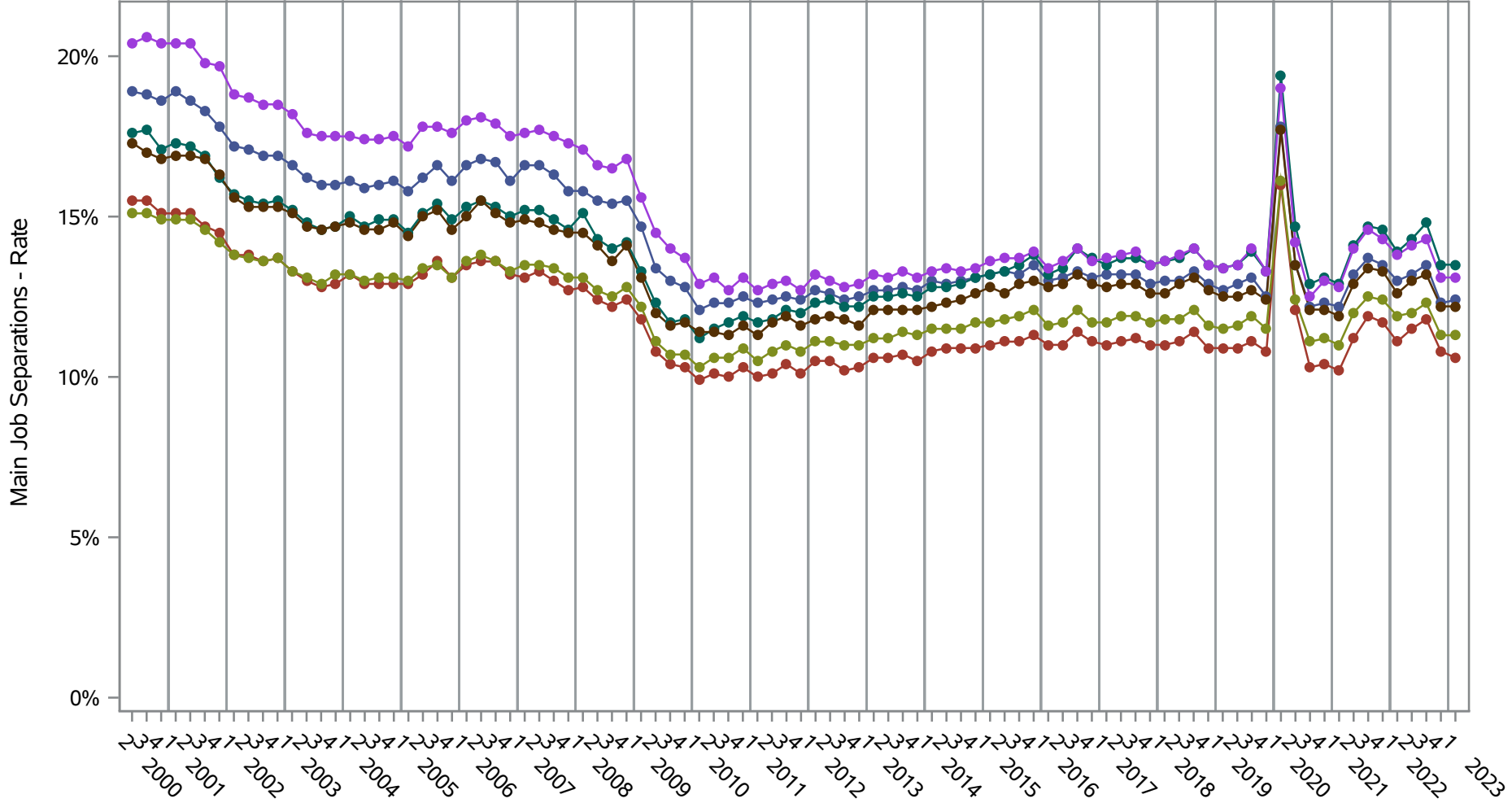


**Source: United States Census Bureau, Job-to-Job Flow Statistics, Release R2024Q1 (Beta)**

# National J2J Rates

## Main Job Separations (Seasonally Adjusted)

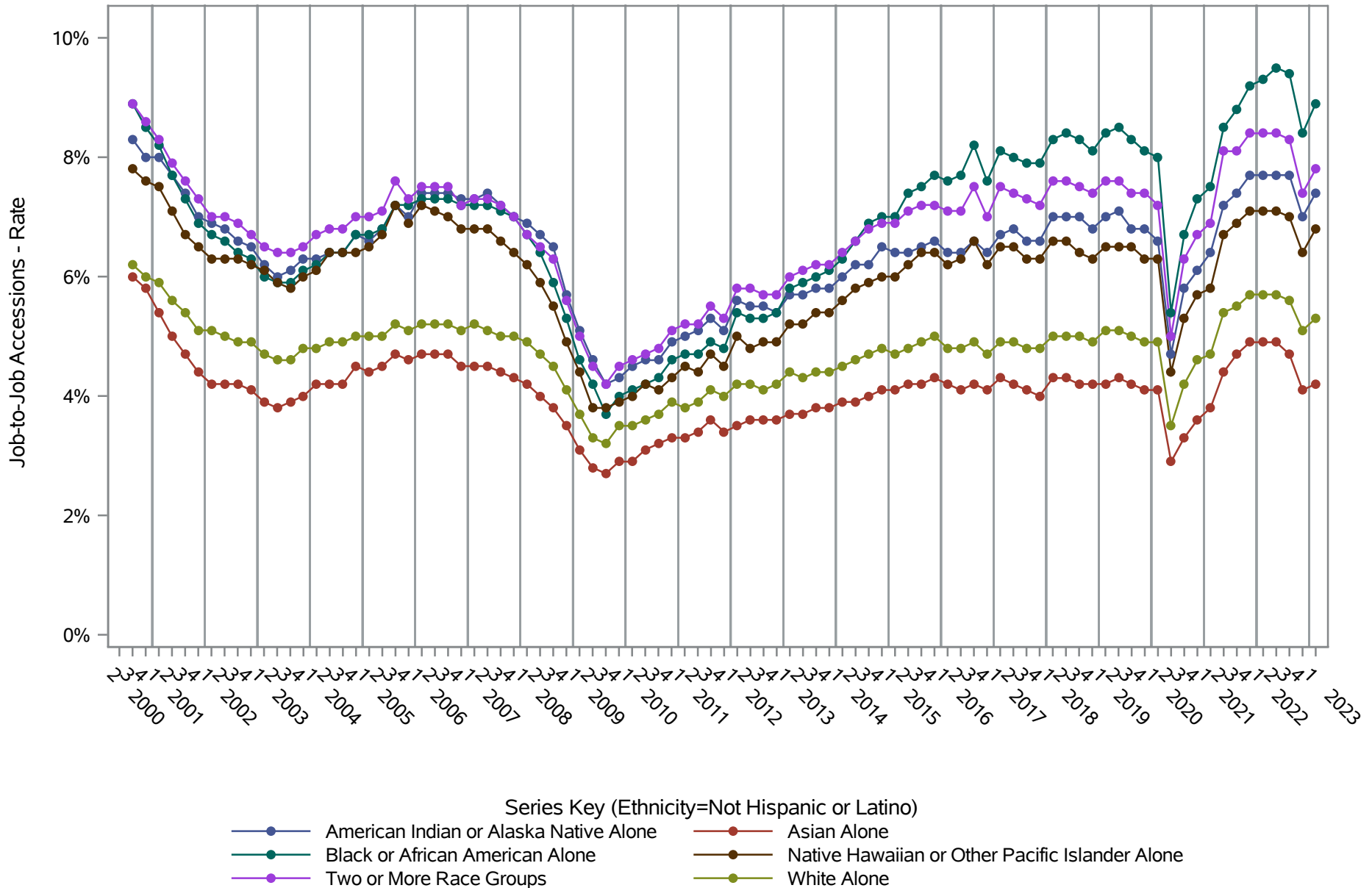
### by Race and Ethnicity (2 of 2) Ethnicity=Hispanic or Latino



- Series Key (Ethnicity=Hispanic or Latino)
- American Indian or Alaska Native Alone
  - Asian Alone
  - Black or African American Alone
  - Native Hawaiian or Other Pacific Islander Alone
  - Two or More Race Groups
  - White Alone

**Source: United States Census Bureau, Job-to-Job Flow Statistics, Release R2024Q1 (Beta)**

**National J2J Rates**  
**Job-to-Job Accessions (Seasonally Adjusted)**  
*by Race and Ethnicity (1 of 2) Ethnicity=Not Hispanic or Latino*

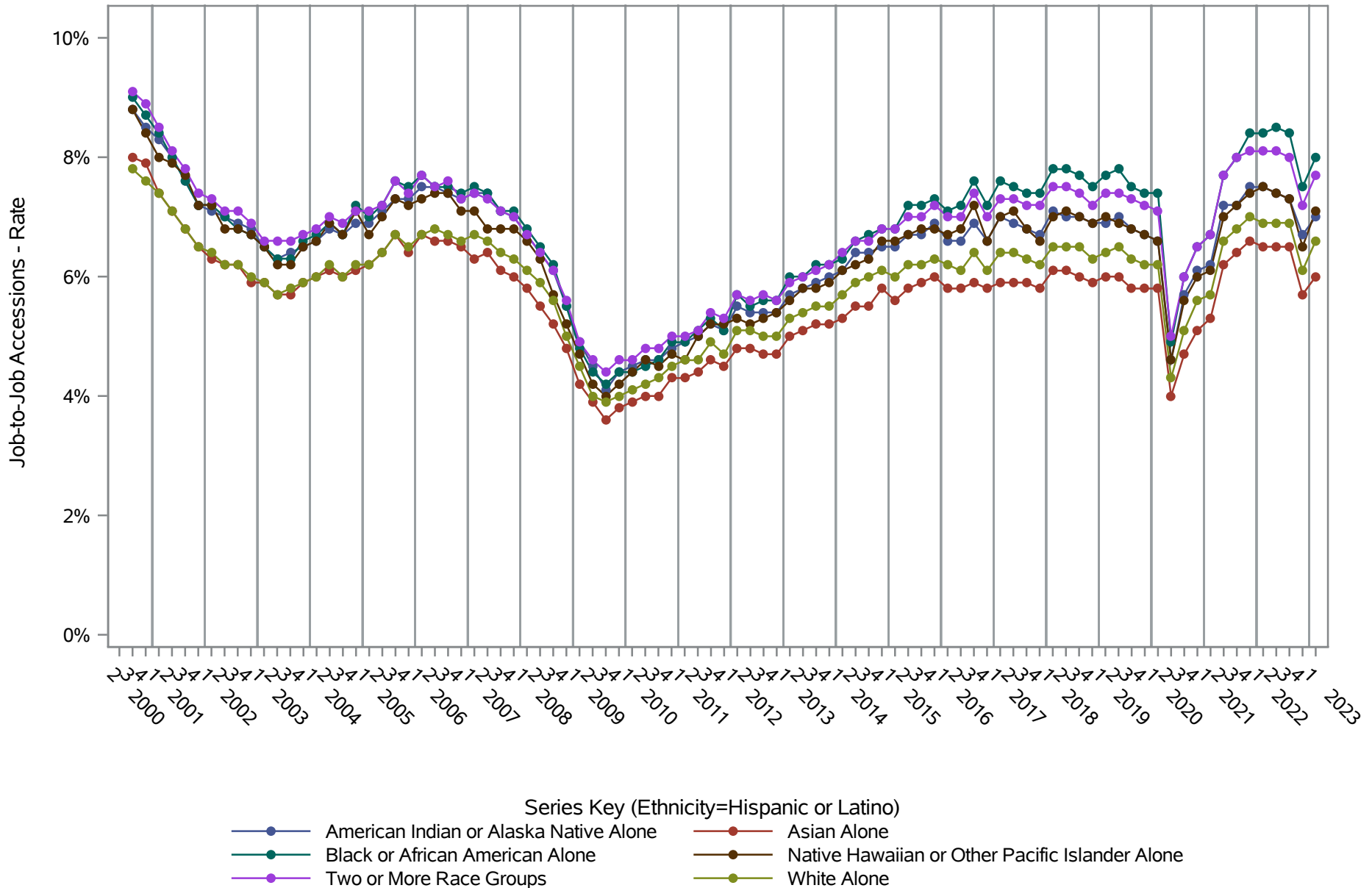


**Source: United States Census Bureau, Job-to-Job Flow Statistics, Release R2024Q1 (Beta)**

# National J2J Rates

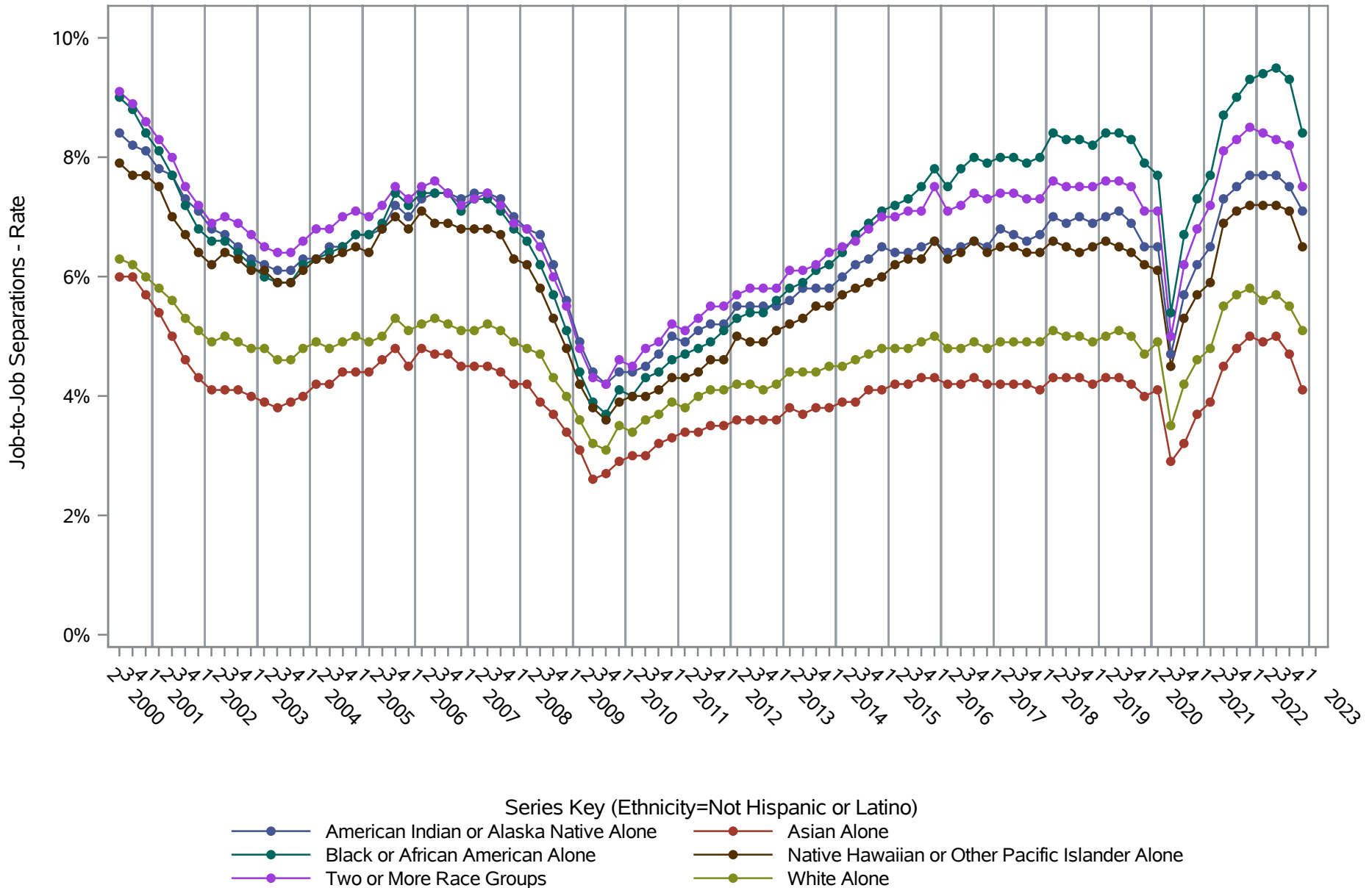
## Job-to-Job Accessions (Seasonally Adjusted)

### by Race and Ethnicity (2 of 2) Ethnicity=Hispanic or Latino



Source: United States Census Bureau, Job-to-Job Flow Statistics, Release R2024Q1 (Beta)

**National J2J Rates**  
**Job-to-Job Separations (Seasonally Adjusted)**  
*by Race and Ethnicity (1 of 2) Ethnicity=Not Hispanic or Latino*

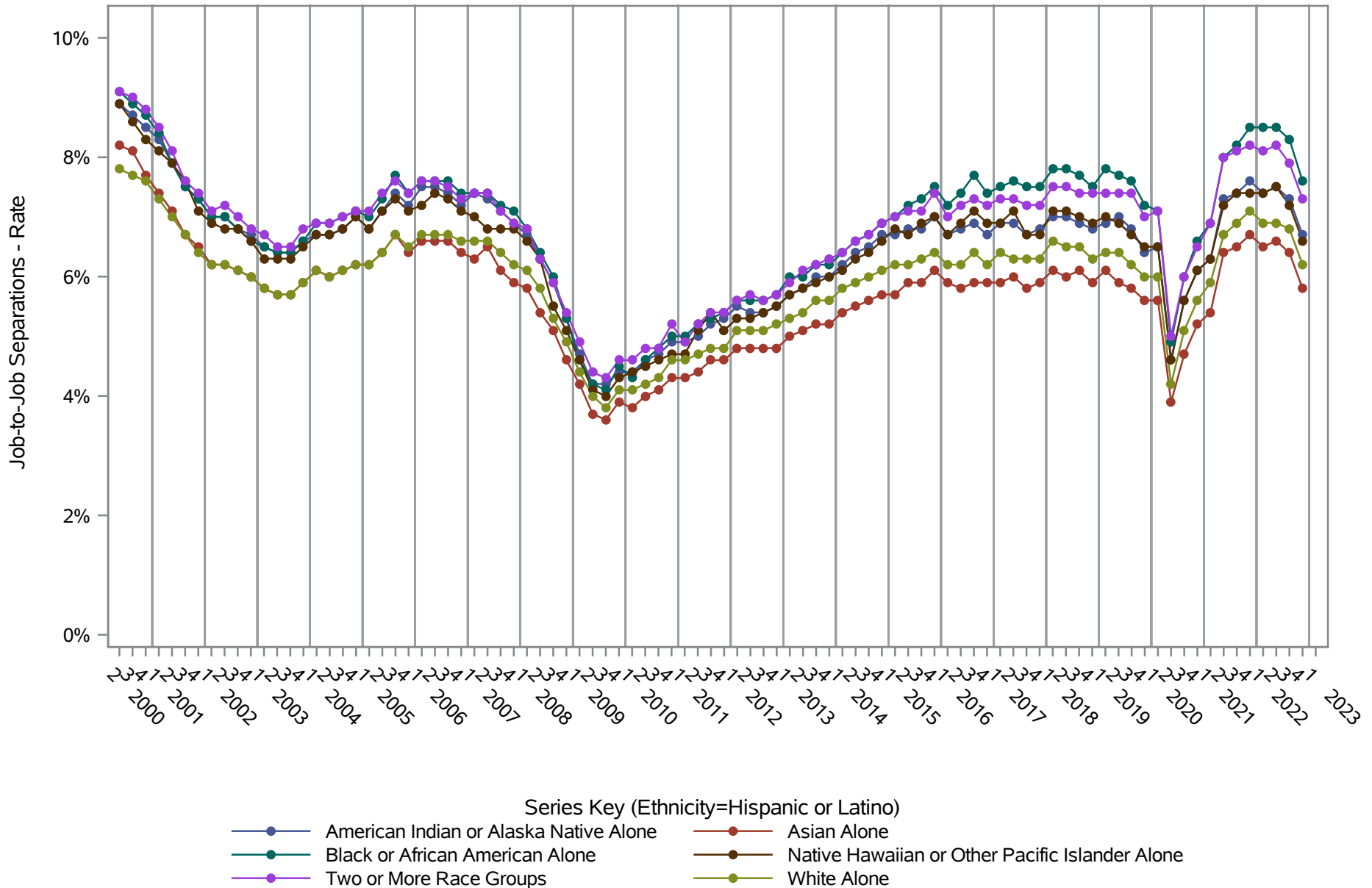


**Source: United States Census Bureau, Job-to-Job Flow Statistics, Release R2024Q1 (Beta)**

# National J2J Rates

## Job-to-Job Separations (Seasonally Adjusted)

### by Race and Ethnicity (2 of 2) Ethnicity=Hispanic or Latino

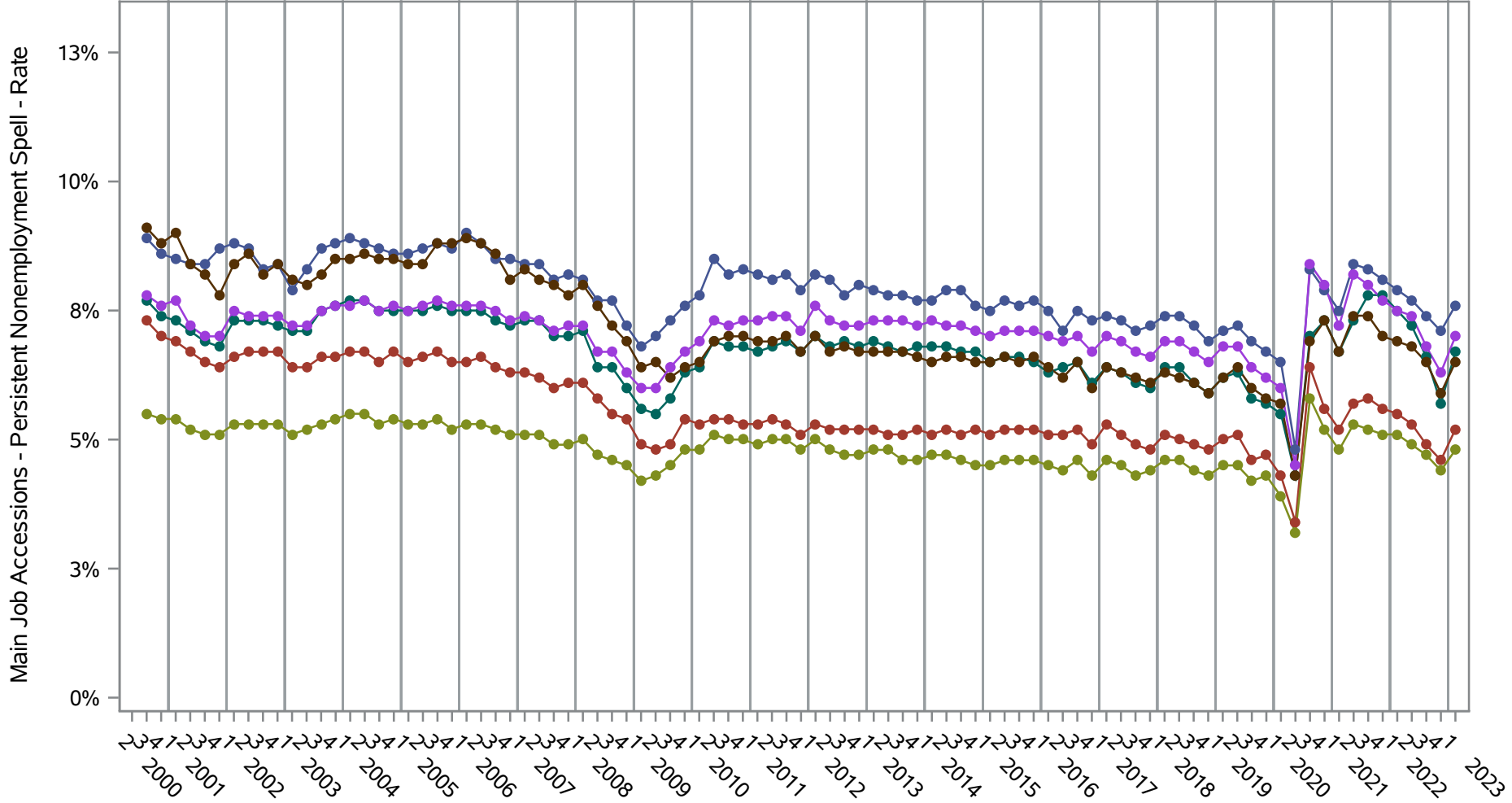


Source: United States Census Bureau, Job-to-Job Flow Statistics, Release R2024Q1 (Beta)



# National J2J Rates

## Main Job Accessions - Persistent Nonemployment Spell (Seasonally Adjusted) by Race and Ethnicity (1 of 2) Ethnicity=Not Hispanic or Latino

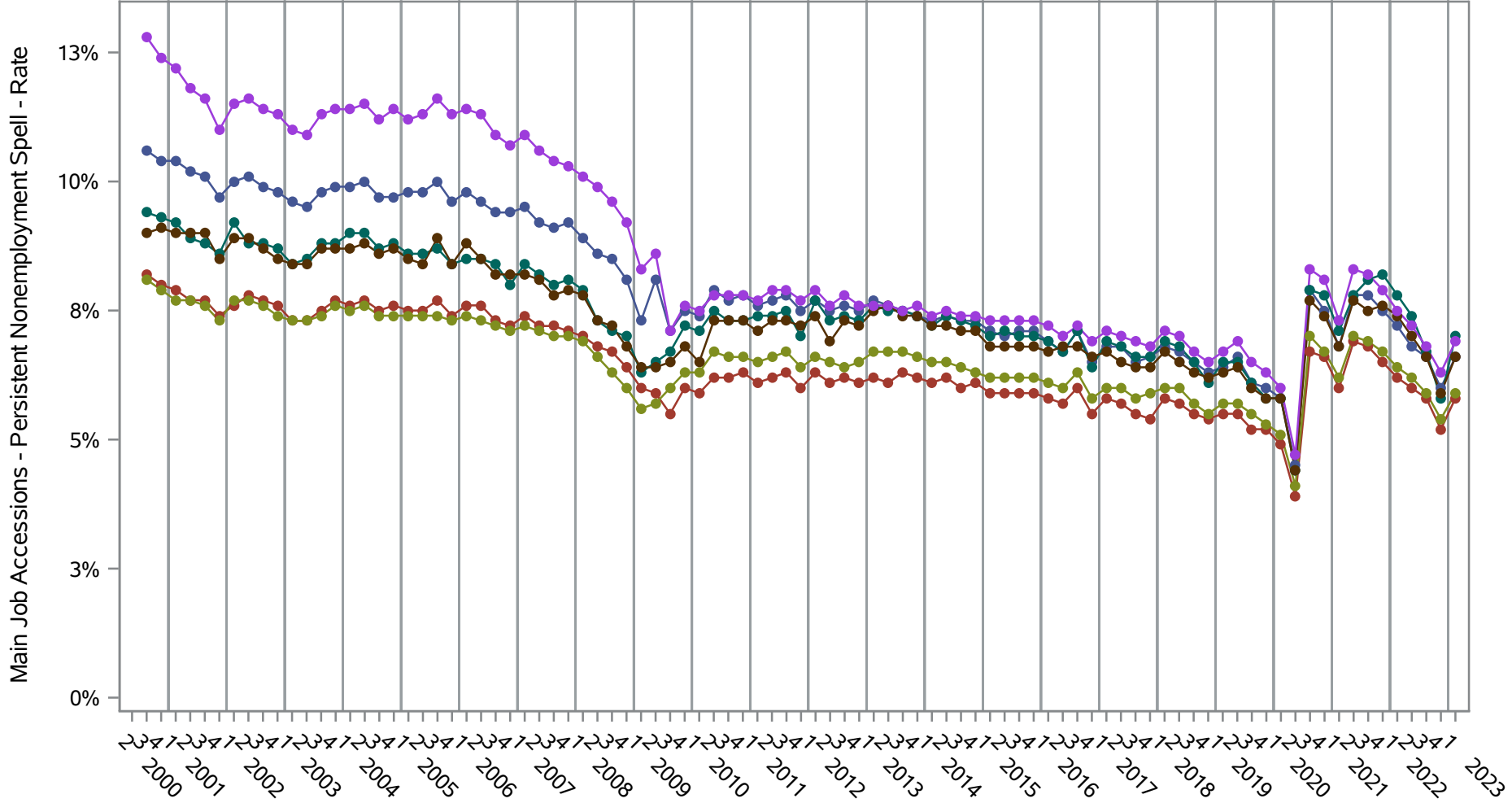


- Series Key (Ethnicity=Not Hispanic or Latino)
- American Indian or Alaska Native Alone
  - Asian Alone
  - Black or African American Alone
  - Native Hawaiian or Other Pacific Islander Alone
  - Two or More Race Groups
  - White Alone

**Source: United States Census Bureau, Job-to-Job Flow Statistics, Release R2024Q1 (Beta)**

# National J2J Rates

## Main Job Accessions - Persistent Nonemployment Spell (Seasonally Adjusted) by Race and Ethnicity (2 of 2) Ethnicity=Hispanic or Latino

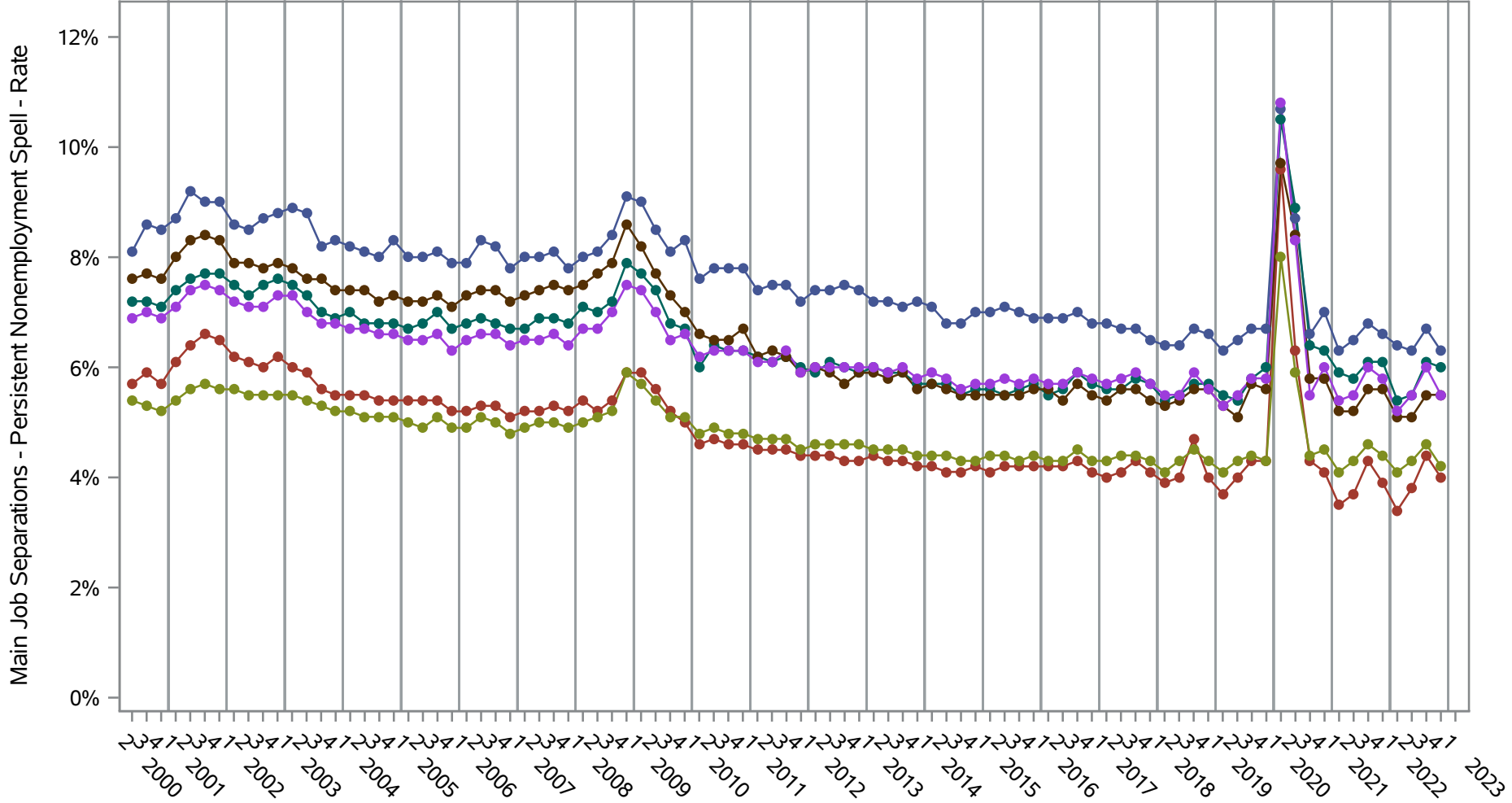


- Series Key (Ethnicity=Hispanic or Latino)
- American Indian or Alaska Native Alone
  - Asian Alone
  - Black or African American Alone
  - Native Hawaiian or Other Pacific Islander Alone
  - Two or More Race Groups
  - White Alone

**Source: United States Census Bureau, Job-to-Job Flow Statistics, Release R2024Q1 (Beta)**

# National J2J Rates

## Main Job Separations - Persistent Nonemployment Spell (Seasonally Adjusted) by Race and Ethnicity (1 of 2) Ethnicity=Not Hispanic or Latino

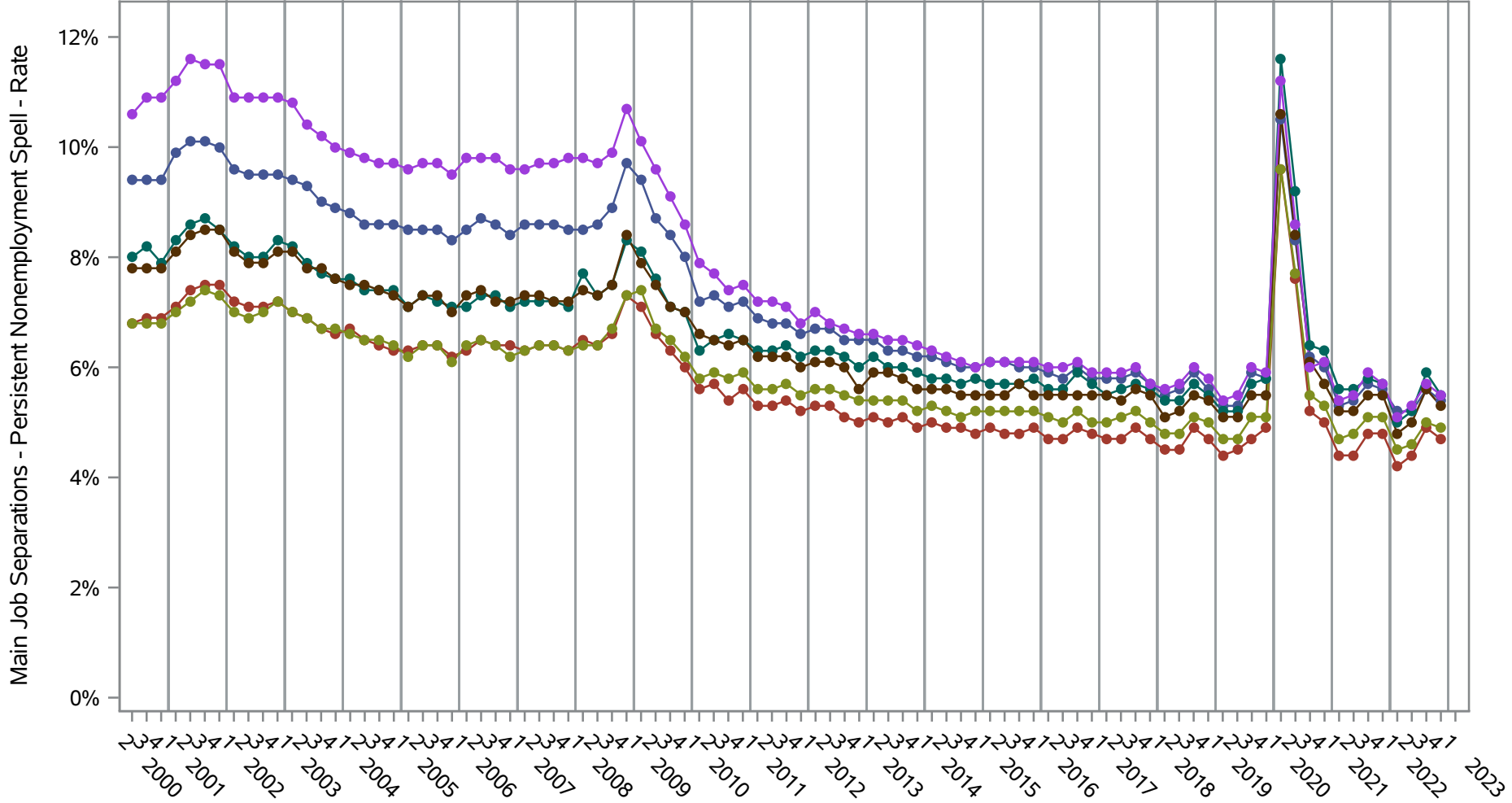


- Series Key (Ethnicity=Not Hispanic or Latino)
- American Indian or Alaska Native Alone
  - Asian Alone
  - Black or African American Alone
  - Native Hawaiian or Other Pacific Islander Alone
  - Two or More Race Groups
  - White Alone

**Source: United States Census Bureau, Job-to-Job Flow Statistics, Release R2024Q1 (Beta)**

# National J2J Rates

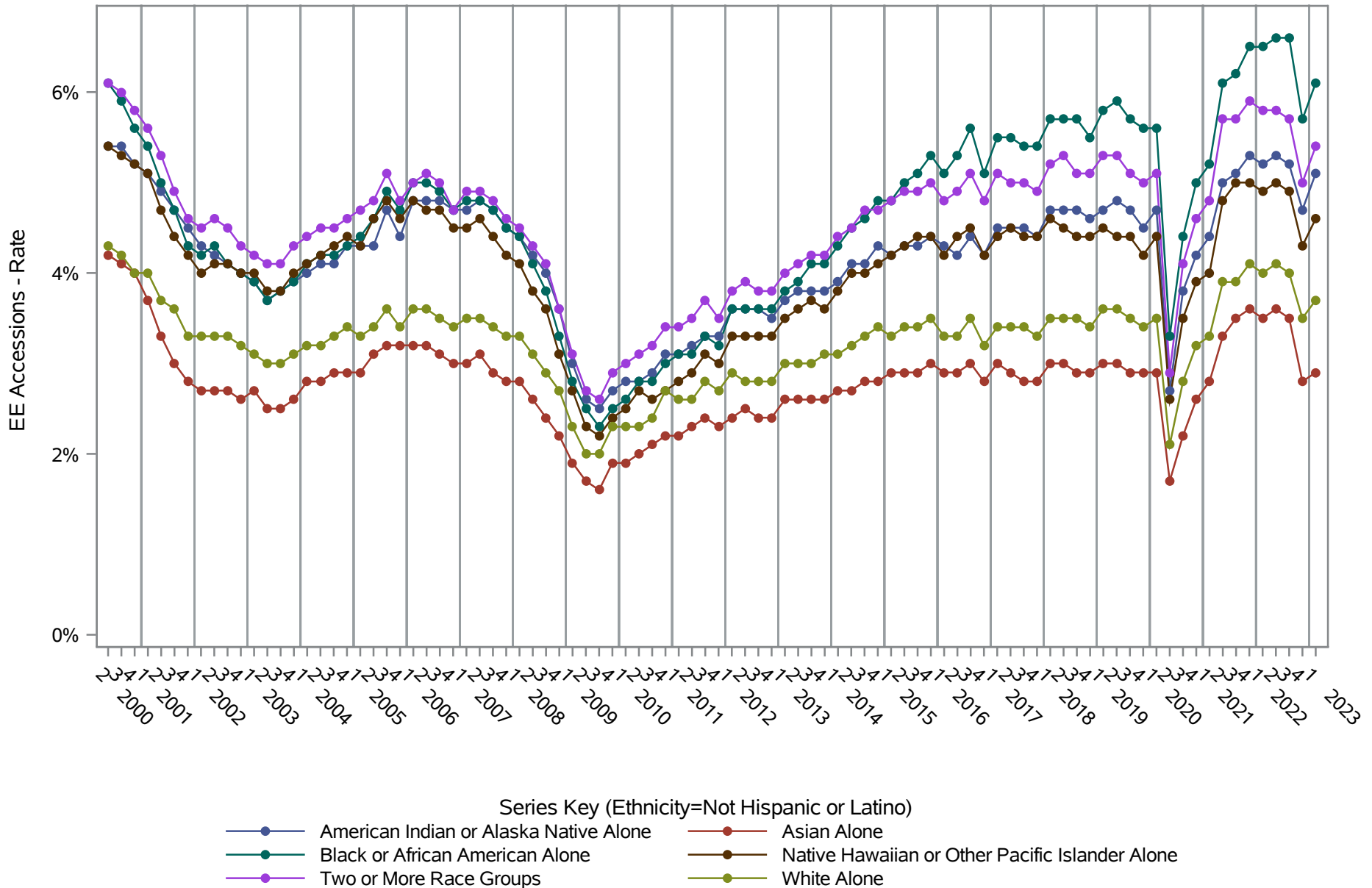
## Main Job Separations - Persistent Nonemployment Spell (Seasonally Adjusted) by Race and Ethnicity (2 of 2) Ethnicity=Hispanic or Latino



- Series Key (Ethnicity=Hispanic or Latino)
- American Indian or Alaska Native Alone
  - Asian Alone
  - Black or African American Alone
  - Native Hawaiian or Other Pacific Islander Alone
  - Two or More Race Groups
  - White Alone

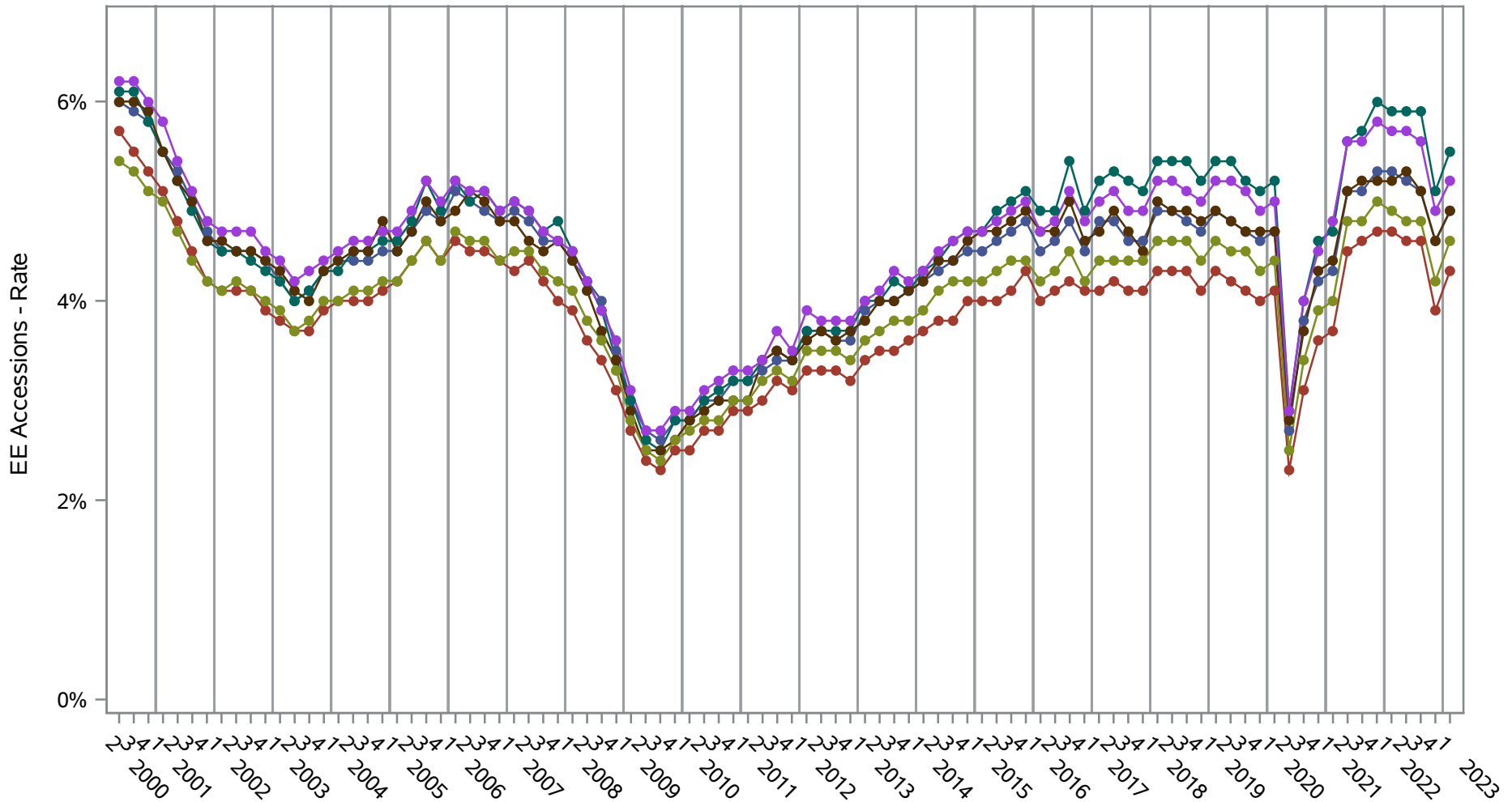
**Source: United States Census Bureau, Job-to-Job Flow Statistics, Release R2024Q1 (Beta)**

**National J2J Rates**  
**EE Accessions (Seasonally Adjusted)**  
*by Race and Ethnicity (1 of 2) Ethnicity=Not Hispanic or Latino*



**Source: United States Census Bureau, Job-to-Job Flow Statistics, Release R2024Q1 (Beta)**

**National J2J Rates**  
**EE Accessions (Seasonally Adjusted)**  
*by Race and Ethnicity (2 of 2) Ethnicity=Hispanic or Latino*

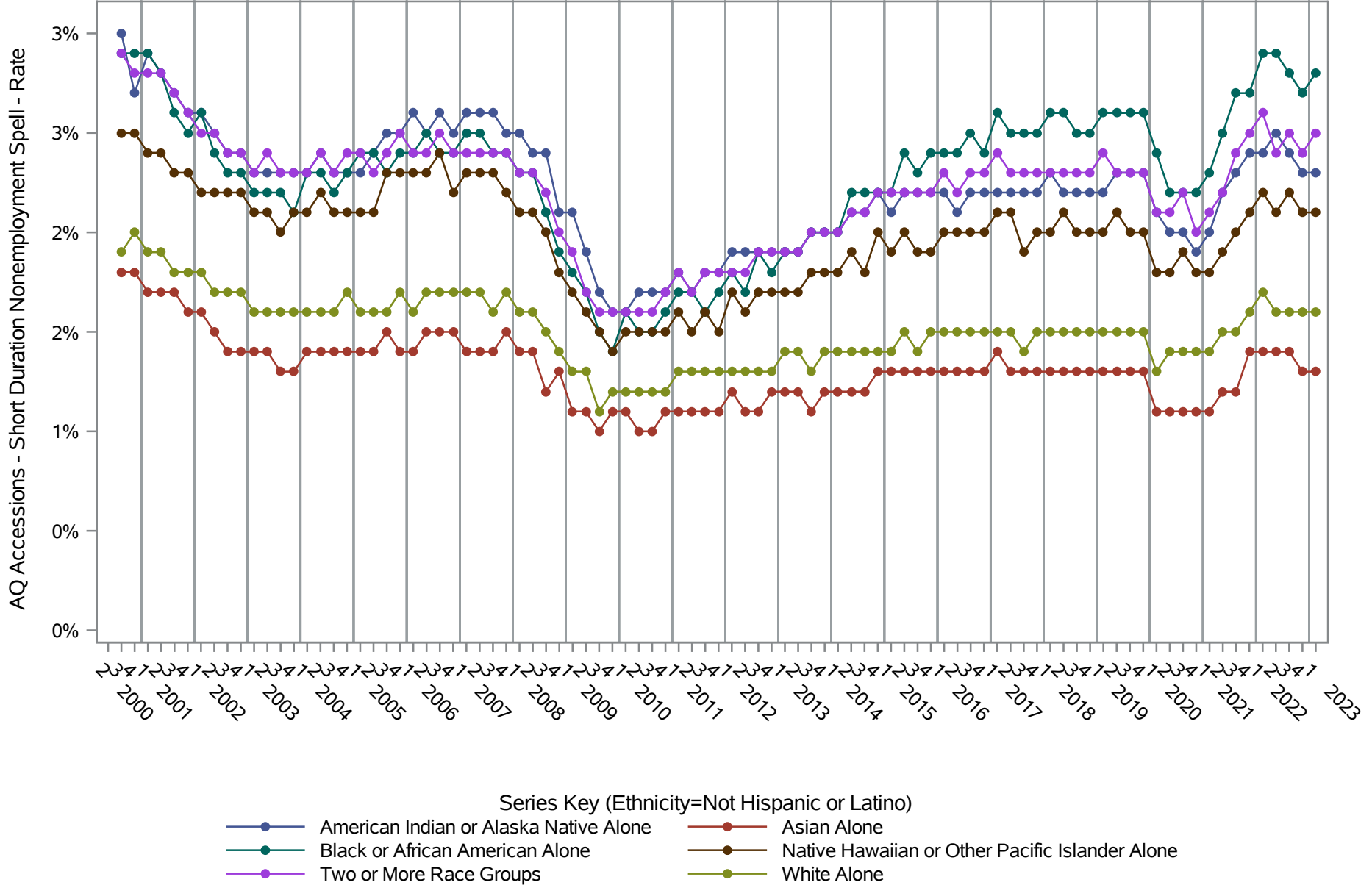


- Series Key (Ethnicity=Hispanic or Latino)
- American Indian or Alaska Native Alone
  - Asian Alone
  - Black or African American Alone
  - Native Hawaiian or Other Pacific Islander Alone
  - Two or More Race Groups
  - White Alone

**Source: United States Census Bureau, Job-to-Job Flow Statistics, Release R2024Q1 (Beta)**

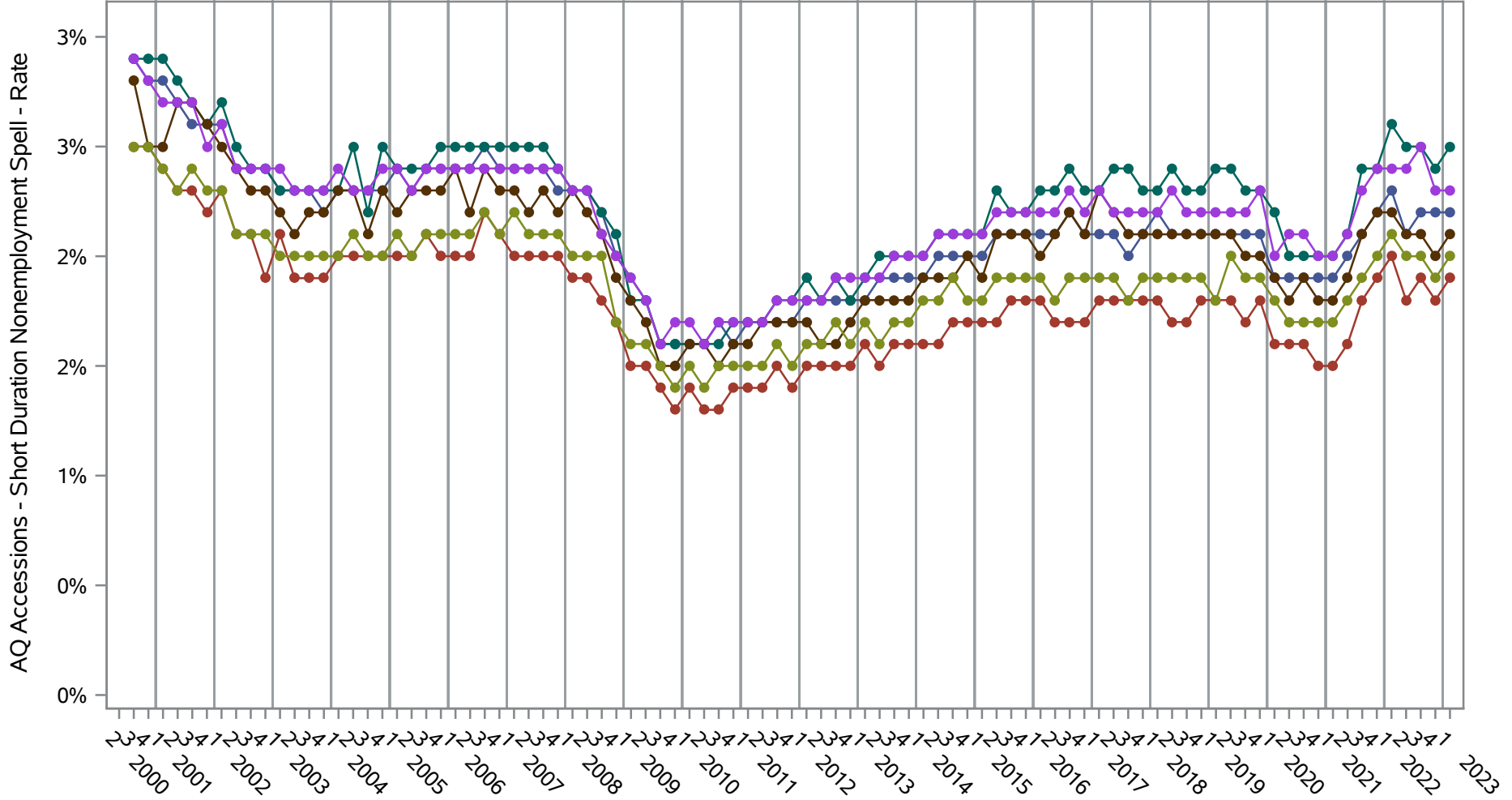
# National J2J Rates

## AQ Accessions - Short Duration Nonemployment Spell (Seasonally Adjusted) by Race and Ethnicity (1 of 2) Ethnicity=Not Hispanic or Latino



Source: United States Census Bureau, Job-to-Job Flow Statistics, Release R2024Q1 (Beta)

**National J2J Rates**  
**AQ Accessions - Short Duration Nonemployment Spell (Seasonally Adjusted)**  
*by Race and Ethnicity (2 of 2) Ethnicity=Hispanic or Latino*



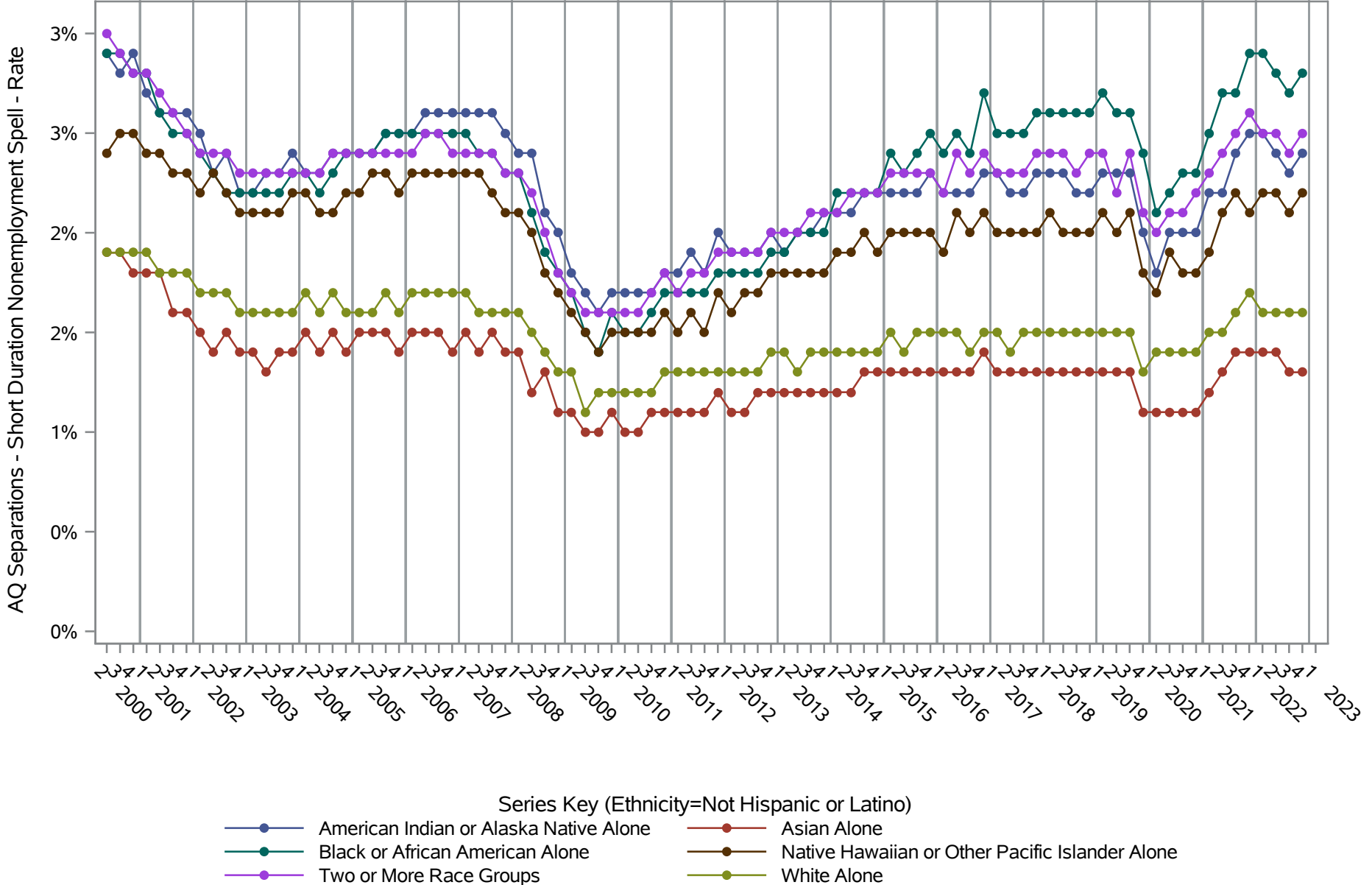
- Series Key (Ethnicity=Hispanic or Latino)
- American Indian or Alaska Native Alone
  - Asian Alone
  - Black or African American Alone
  - Native Hawaiian or Other Pacific Islander Alone
  - Two or More Race Groups
  - White Alone

**Source: United States Census Bureau, Job-to-Job Flow Statistics, Release R2024Q1 (Beta)**



# National J2J Rates

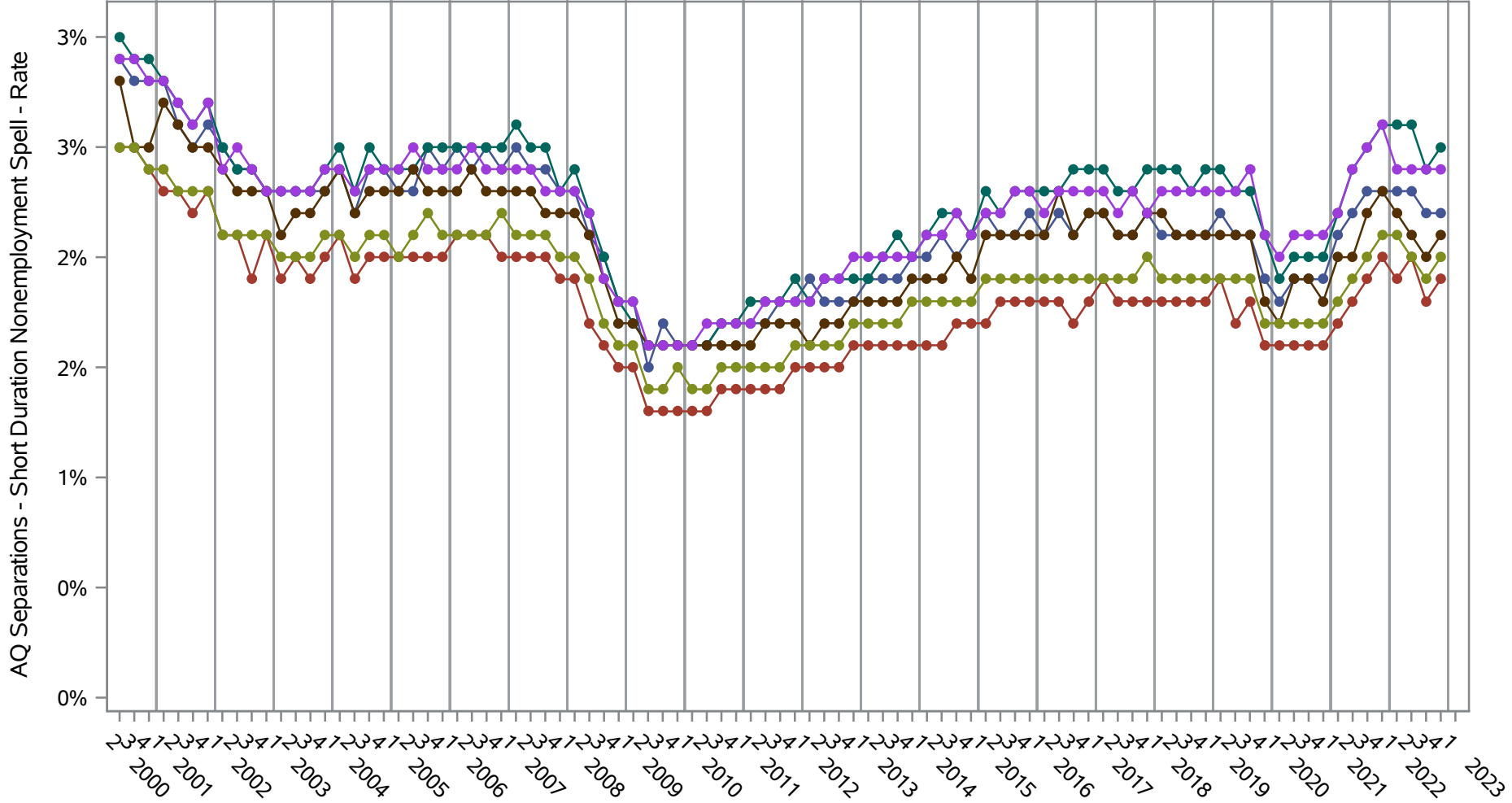
## AQ Separations - Short Duration Nonemployment Spell (Seasonally Adjusted) by Race and Ethnicity (1 of 2) Ethnicity=Not Hispanic or Latino



Source: United States Census Bureau, Job-to-Job Flow Statistics, Release R2024Q1 (Beta)

# National J2J Rates

## AQ Separations - Short Duration Nonemployment Spell (Seasonally Adjusted) by Race and Ethnicity (2 of 2) Ethnicity=Hispanic or Latino



- Series Key (Ethnicity=Hispanic or Latino)
- American Indian or Alaska Native Alone
  - Asian Alone
  - Black or African American Alone
  - Native Hawaiian or Other Pacific Islander Alone
  - Two or More Race Groups
  - White Alone

**Source: United States Census Bureau, Job-to-Job Flow Statistics, Release R2024Q1 (Beta)**