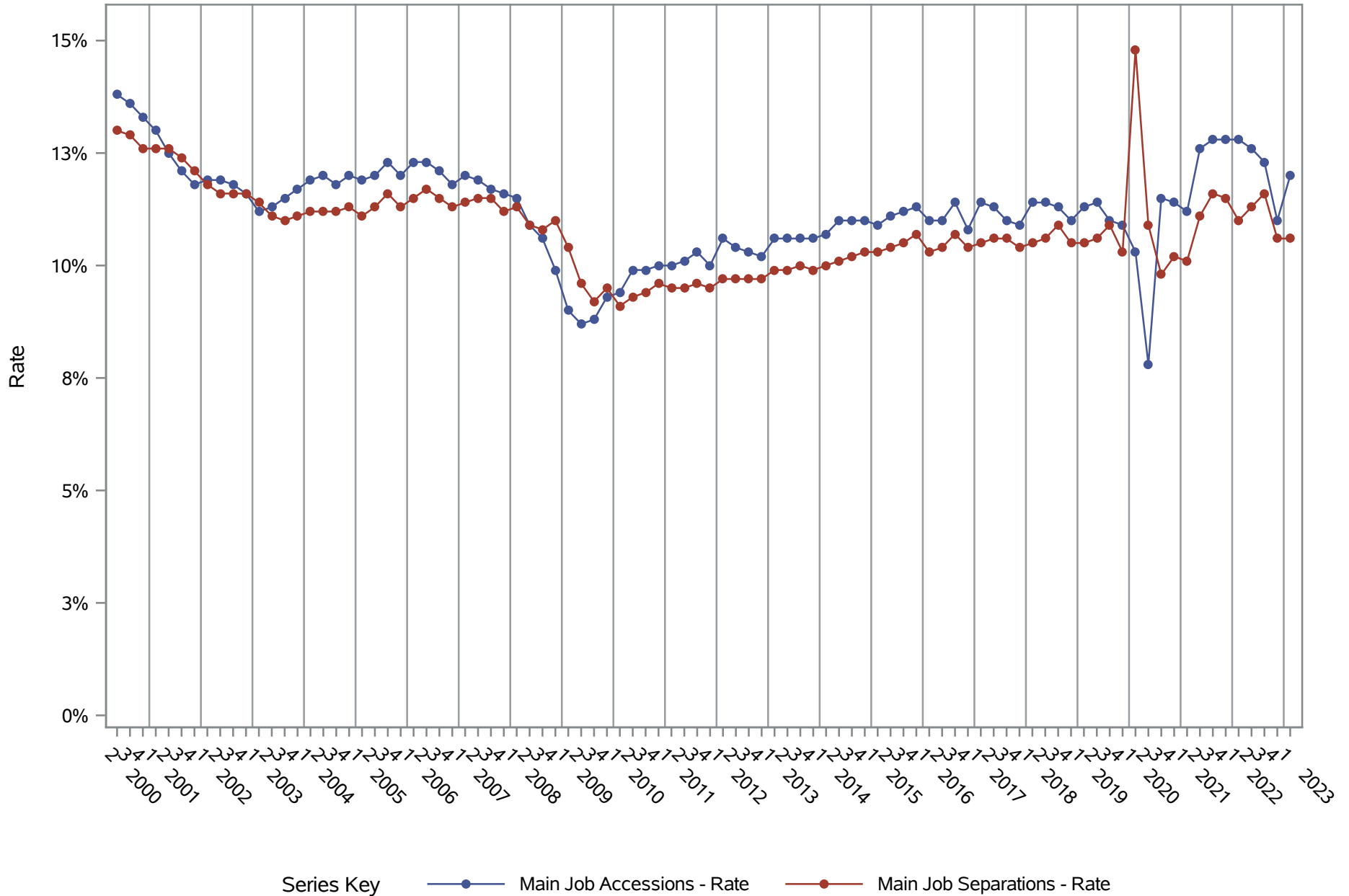


National J2J Rates

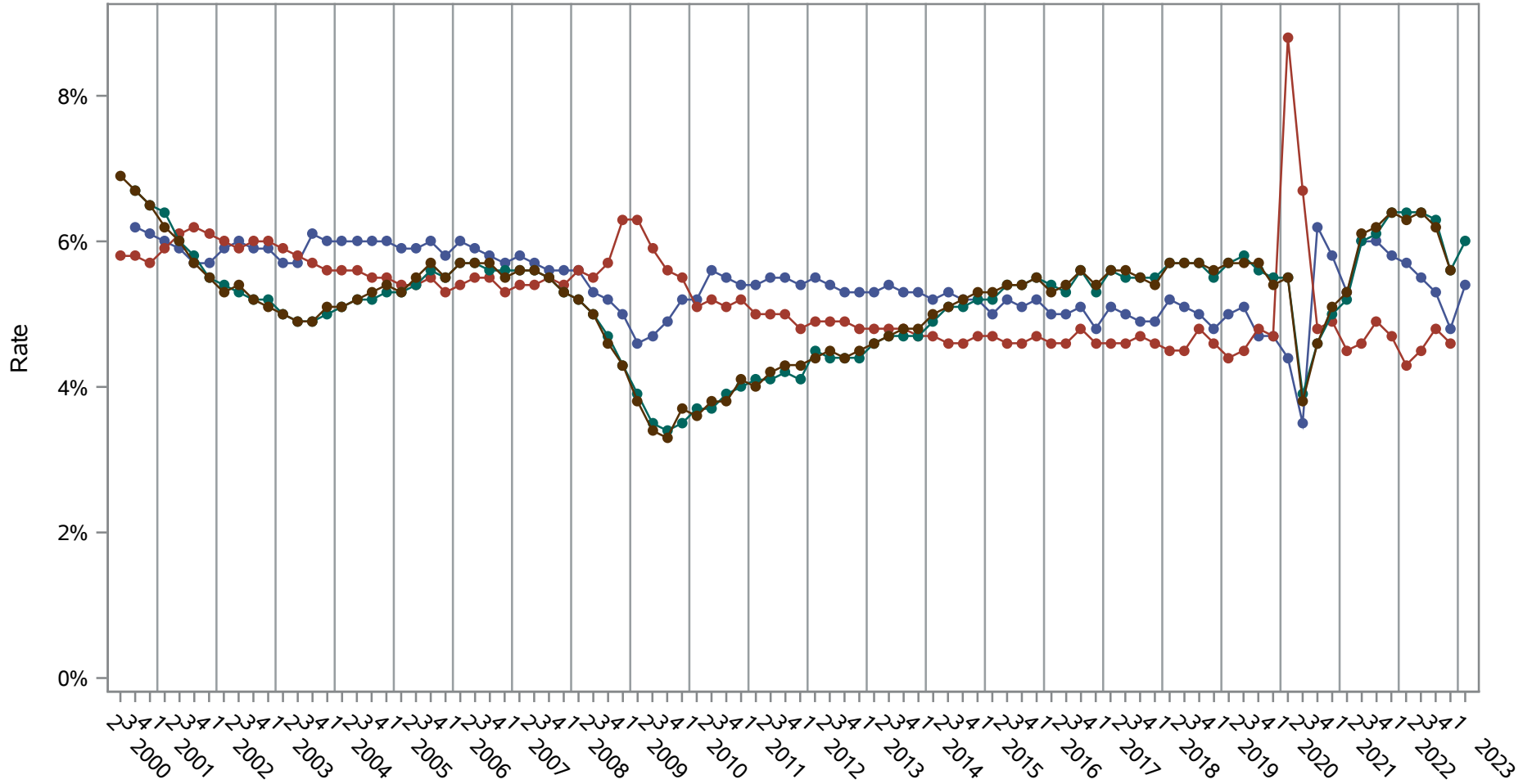
Accessions to and Separations from Main Jobs (Seasonally Adjusted)



Source: United States Census Bureau, Job-to-Job Flow Statistics, Release R2024Q1 (Beta)

National J2J Rates

Accessions from and Separations to Persistent Nonemployment, and Job-to-Job Accessions and Separations (Seasonally Adjusted)



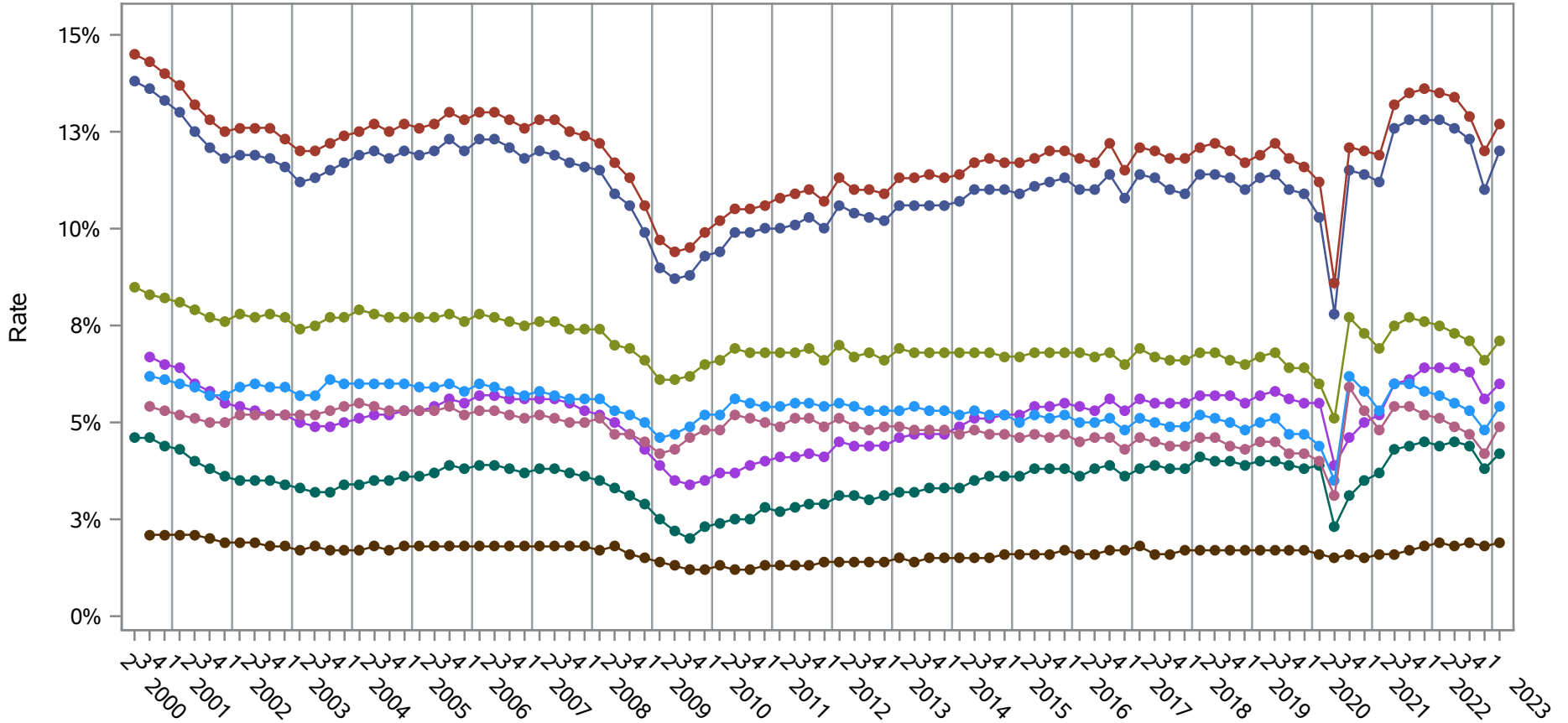
Series Key

- Main Job Accessions - Persistent Nonemployment Spell - Rate
- Main Job Separations - Persistent Nonemployment Spell - Rate
- Job-to-Job Accessions - Rate
- Job-to-Job Separations - Rate

Source: United States Census Bureau, Job-to-Job Flow Statistics, Release R2024Q1 (Beta)

National J2J Rates

All Measures of Accessions/Start of Main Job (Seasonally Adjusted)

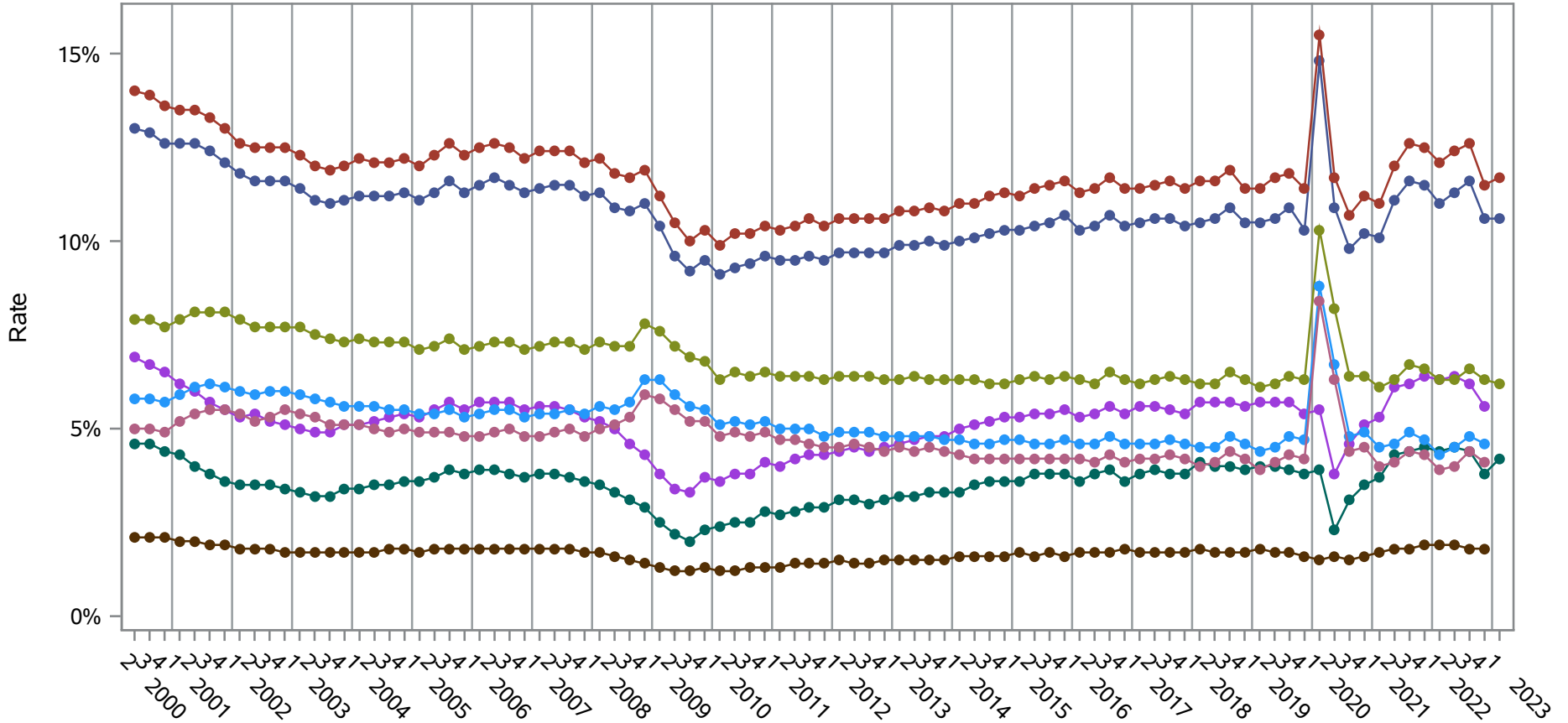


- Series Key
- Main Job Accessions - Rate
 - Main Job Starts - Rate
 - EE Accessions - Rate
 - AQ Accessions - Short Duration Nonemployment Spell - Rate
 - Job-to-Job Accessions - Rate
 - Main Job Accessions - Any Nonemployment Spell - Rate
 - Main Job Accessions - Persistent Nonemployment Spell - Rate
 - Main Job Accessions - Full-qtr Nonemployment Spell - Rate

Source: United States Census Bureau, Job-to-Job Flow Statistics, Release R2024Q1 (Beta)

National J2J Rates

All Measures of Separations/End of Main Job (Seasonally Adjusted)



- Series Key
- Main Job Separations - Rate
 - Main Job Ends - Rate
 - EE Separations - Rate
 - AQ Separations - Short Duration Nonemployment Spell - Rate
 - Job-to-Job Separations - Rate
 - Main Job Separations - Any Nonemployment Spell - Rate
 - Main Job Separations - Persistent Nonemployment Spell - Rate
 - Main Job Separations - Full-qtr Nonemployment Spell - Rate

Source: United States Census Bureau, Job-to-Job Flow Statistics, Release R2024Q1 (Beta)