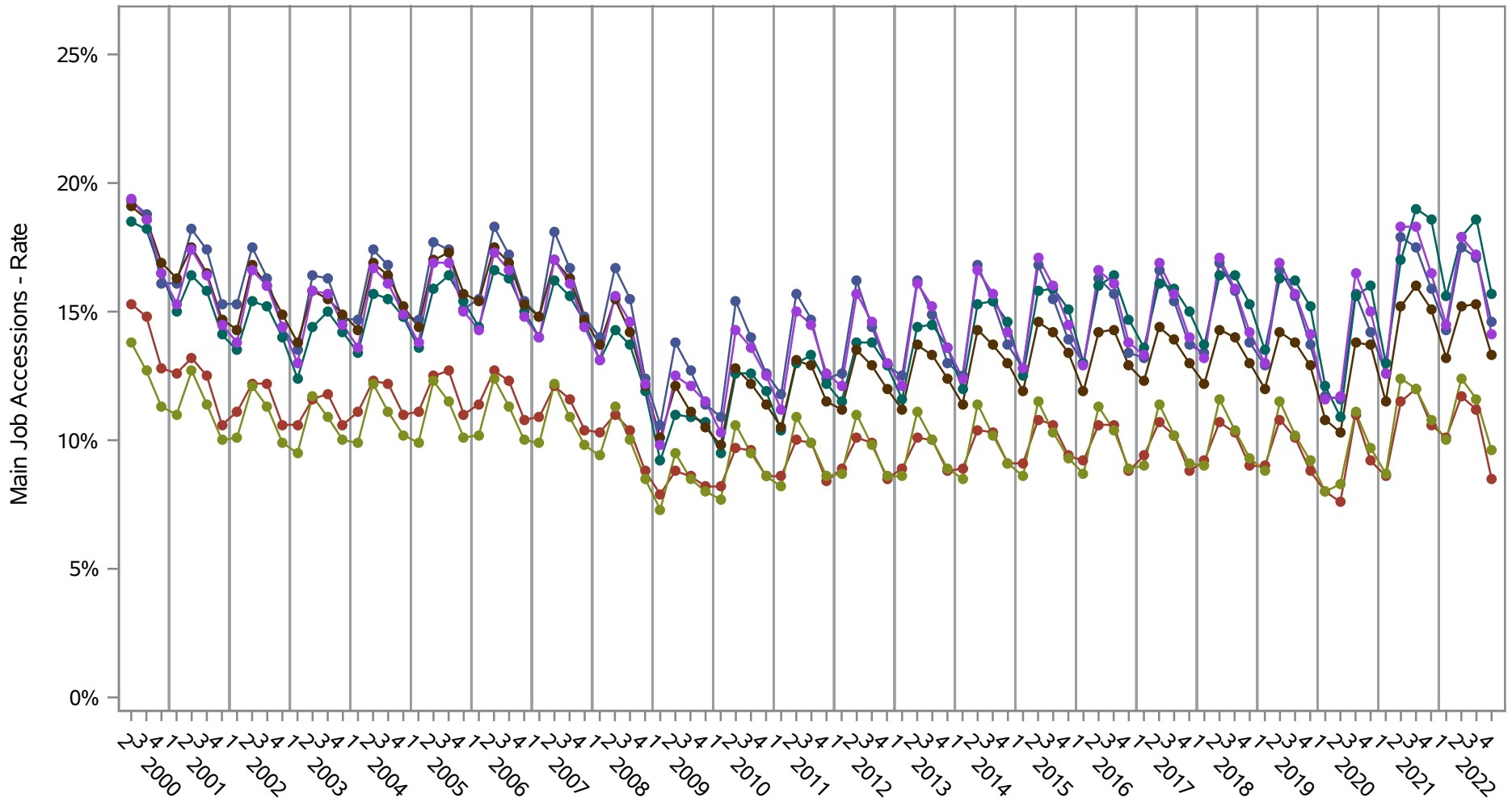


# National J2J Rates

## Main Job Accessions (Not Seasonally Adjusted)

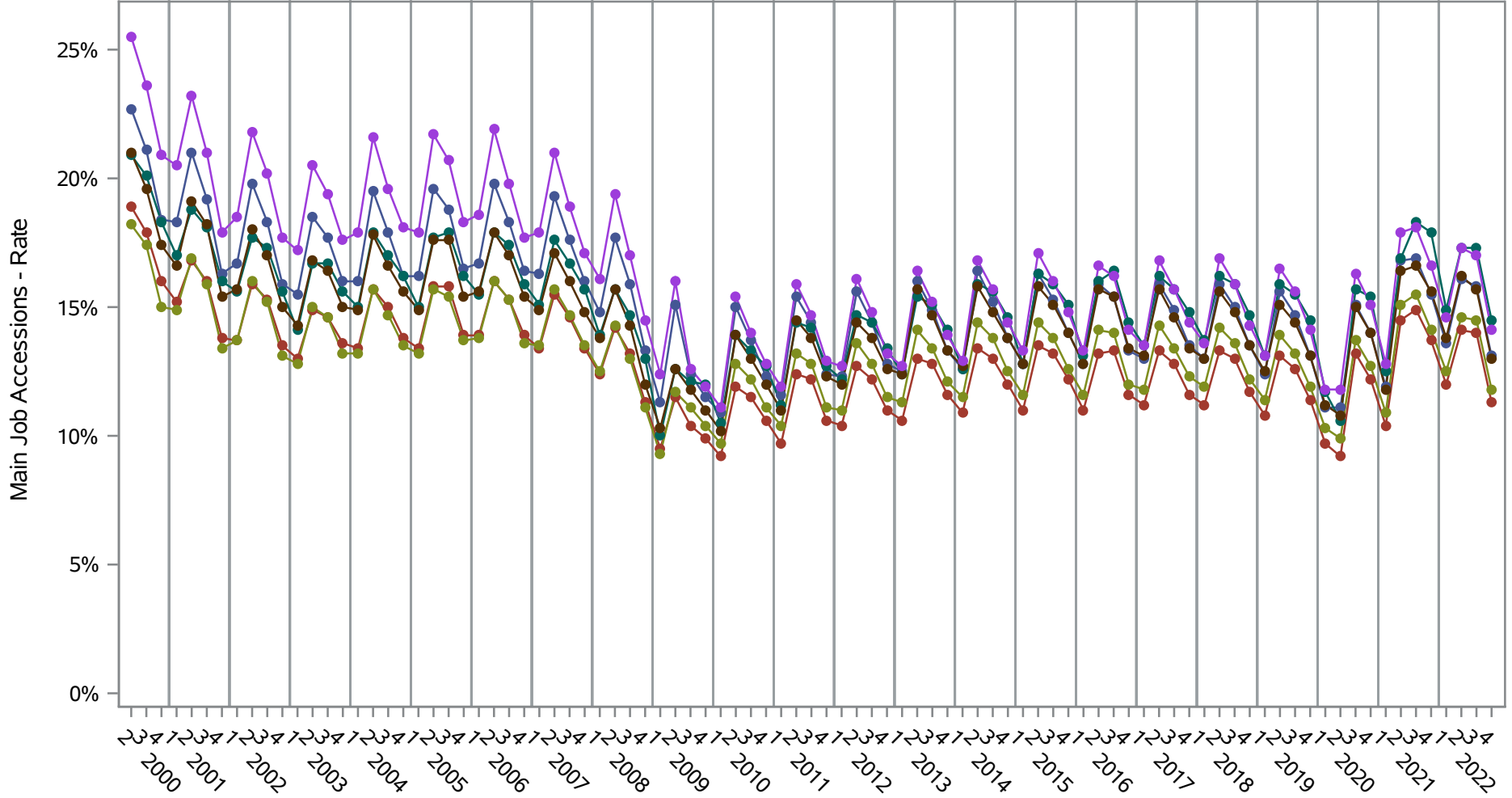
### by Race and Ethnicity (1 of 2) Ethnicity=Not Hispanic or Latino



- Series Key (Ethnicity=Not Hispanic or Latino)
- |  |  |
|--|--|
| <ul style="list-style-type: none"> <li><span style="color: blue;">—●—</span> American Indian or Alaska Native Alone</li> <li><span style="color: teal;">—●—</span> Black or African American Alone</li> <li><span style="color: purple;">—●—</span> Two or More Race Groups</li> </ul> | <ul style="list-style-type: none"> <li><span style="color: red;">—●—</span> Asian Alone</li> <li><span style="color: brown;">—●—</span> Native Hawaiian or Other Pacific Islander Alone</li> <li><span style="color: green;">—●—</span> White Alone</li> </ul> |
|--|--|

**Source: United States Census Bureau, Job-to-Job Flow Statistics, Release R2023Q4 (Beta)**

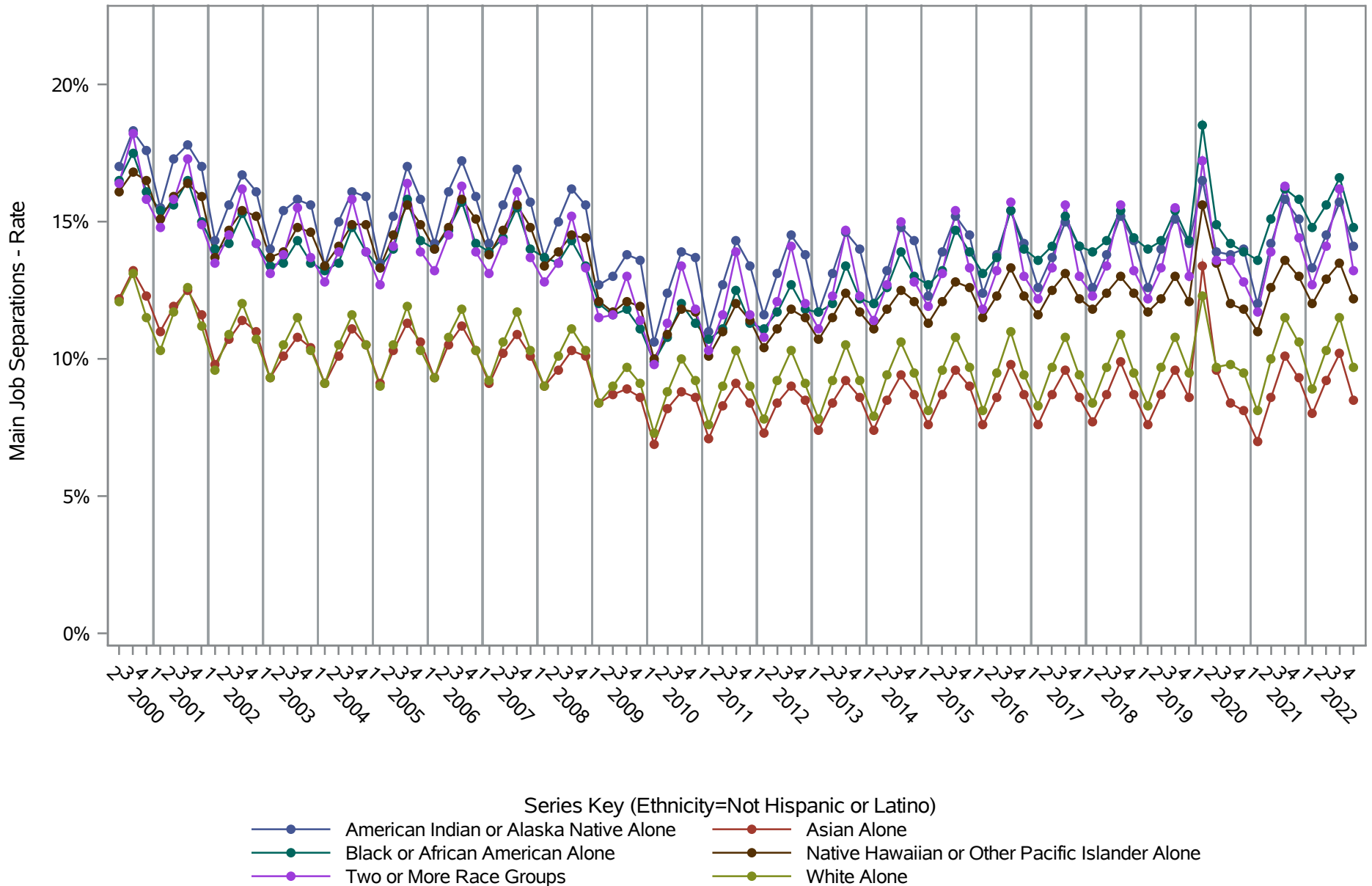
**National J2J Rates**  
**Main Job Accessions (Not Seasonally Adjusted)**  
*by Race and Ethnicity (2 of 2) Ethnicity=Hispanic or Latino*



- Series Key (Ethnicity=Hispanic or Latino)
- American Indian or Alaska Native Alone
  - Asian Alone
  - Black or African American Alone
  - Native Hawaiian or Other Pacific Islander Alone
  - Two or More Race Groups
  - White Alone

**Source: United States Census Bureau, Job-to-Job Flow Statistics, Release R2023Q4 (Beta)**

**National J2J Rates**  
**Main Job Separations (Not Seasonally Adjusted)**  
*by Race and Ethnicity (1 of 2) Ethnicity=Not Hispanic or Latino*

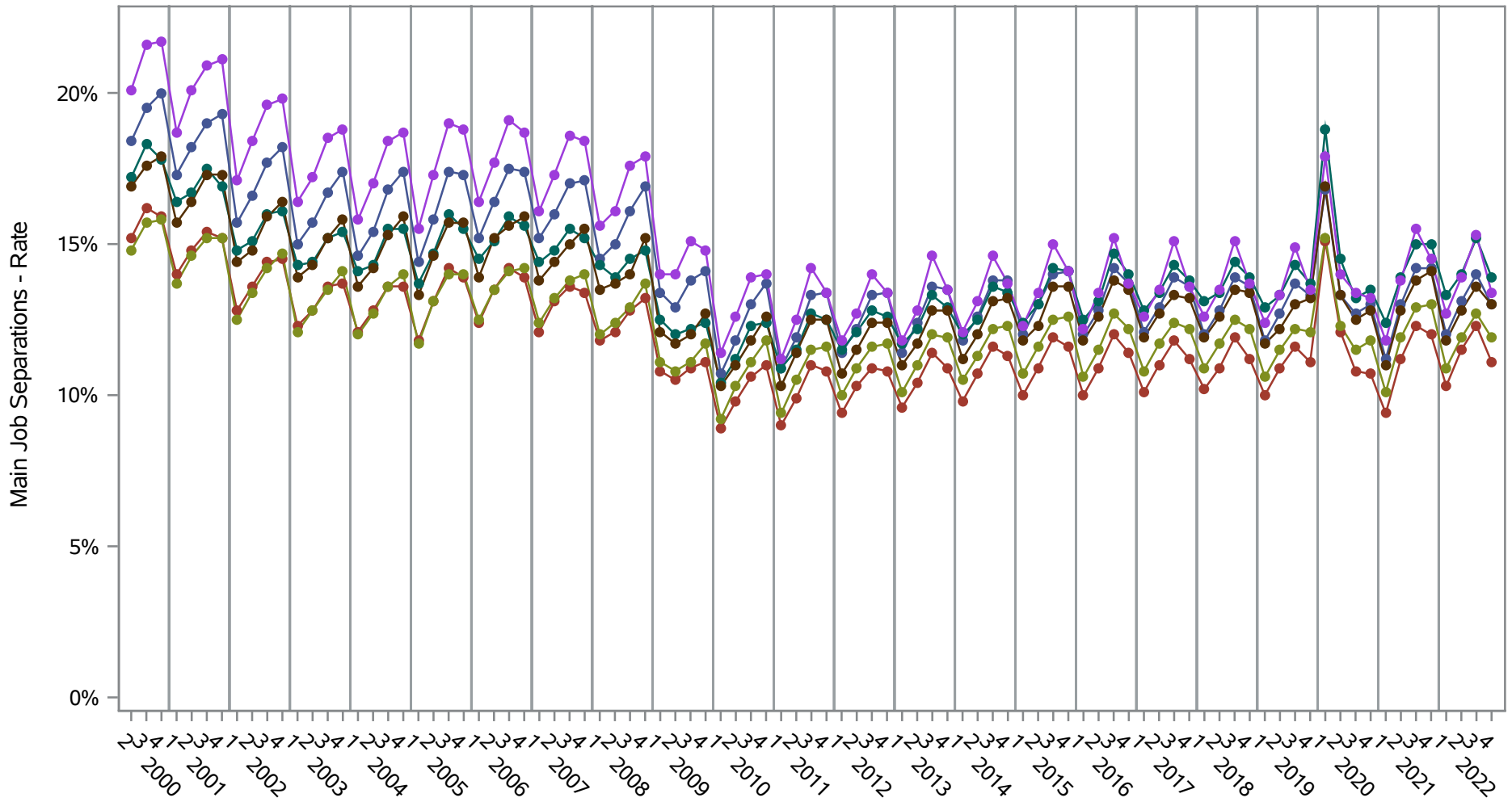


**Source: United States Census Bureau, Job-to-Job Flow Statistics, Release R2023Q4 (Beta)**

# National J2J Rates

## Main Job Separations (Not Seasonally Adjusted)

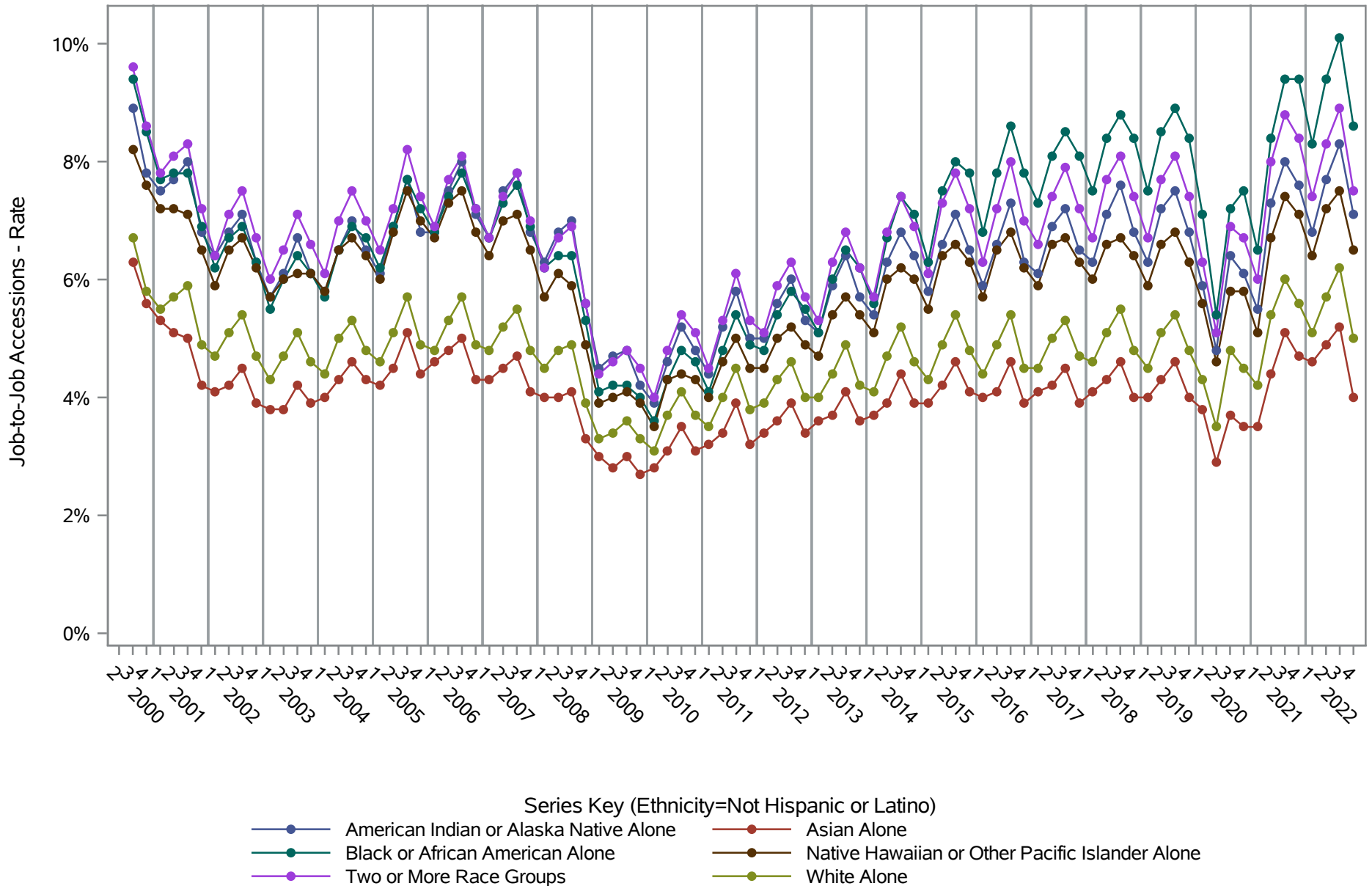
### by Race and Ethnicity (2 of 2) Ethnicity=Hispanic or Latino



- Series Key (Ethnicity=Hispanic or Latino)
- |  |  |
|--|--|
| <ul style="list-style-type: none"> <li><span style="color: blue;">—●—</span> American Indian or Alaska Native Alone</li> <li><span style="color: teal;">—●—</span> Black or African American Alone</li> <li><span style="color: purple;">—●—</span> Two or More Race Groups</li> </ul> | <ul style="list-style-type: none"> <li><span style="color: red;">—●—</span> Asian Alone</li> <li><span style="color: brown;">—●—</span> Native Hawaiian or Other Pacific Islander Alone</li> <li><span style="color: green;">—●—</span> White Alone</li> </ul> |
|--|--|

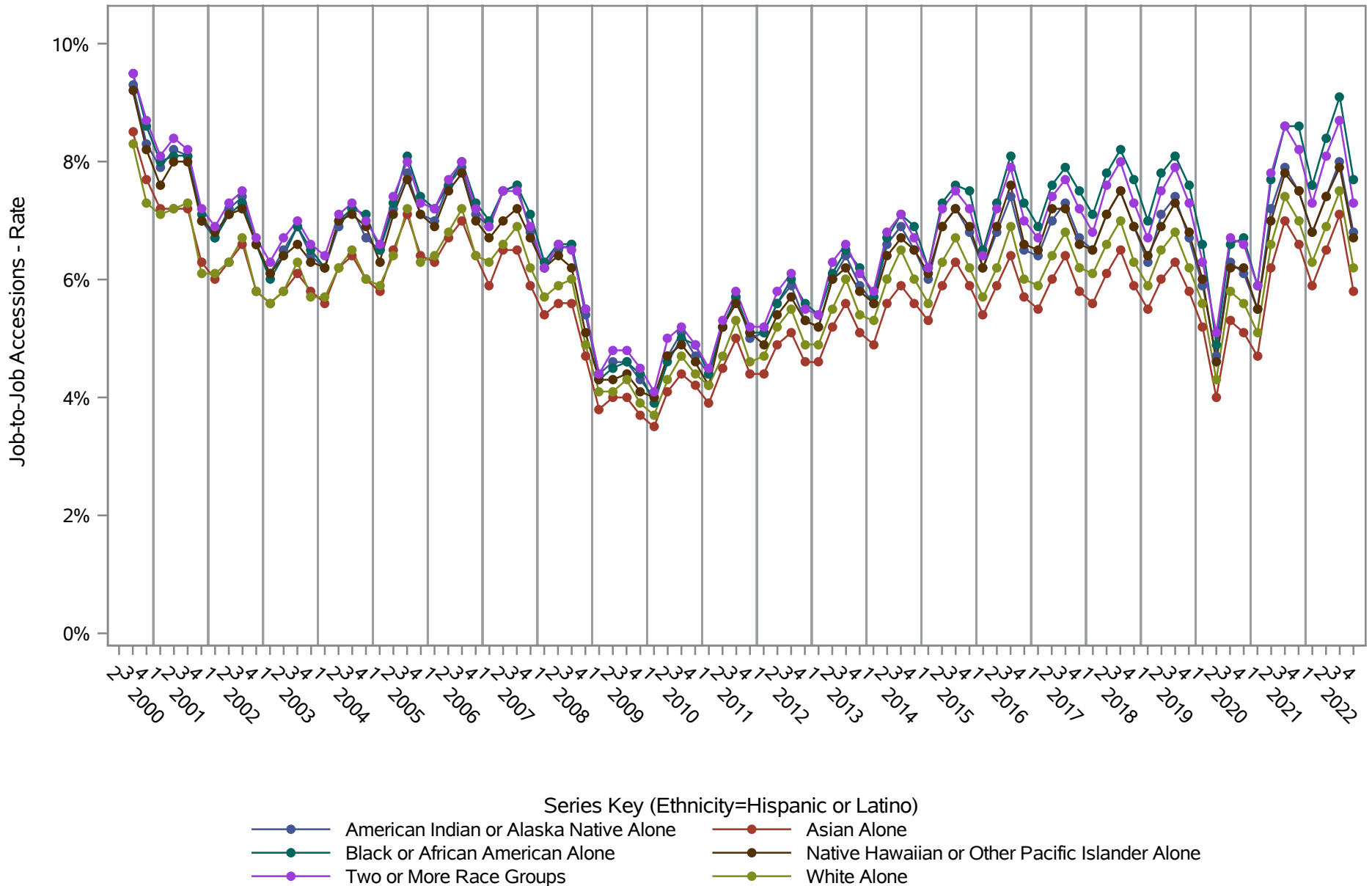
**Source: United States Census Bureau, Job-to-Job Flow Statistics, Release R2023Q4 (Beta)**

**National J2J Rates**  
**Job-to-Job Accessions (Not Seasonally Adjusted)**  
*by Race and Ethnicity (1 of 2) Ethnicity=Not Hispanic or Latino*



**Source: United States Census Bureau, Job-to-Job Flow Statistics, Release R2023Q4 (Beta)**

**National J2J Rates**  
**Job-to-Job Accessions (Not Seasonally Adjusted)**  
*by Race and Ethnicity (2 of 2) Ethnicity=Hispanic or Latino*

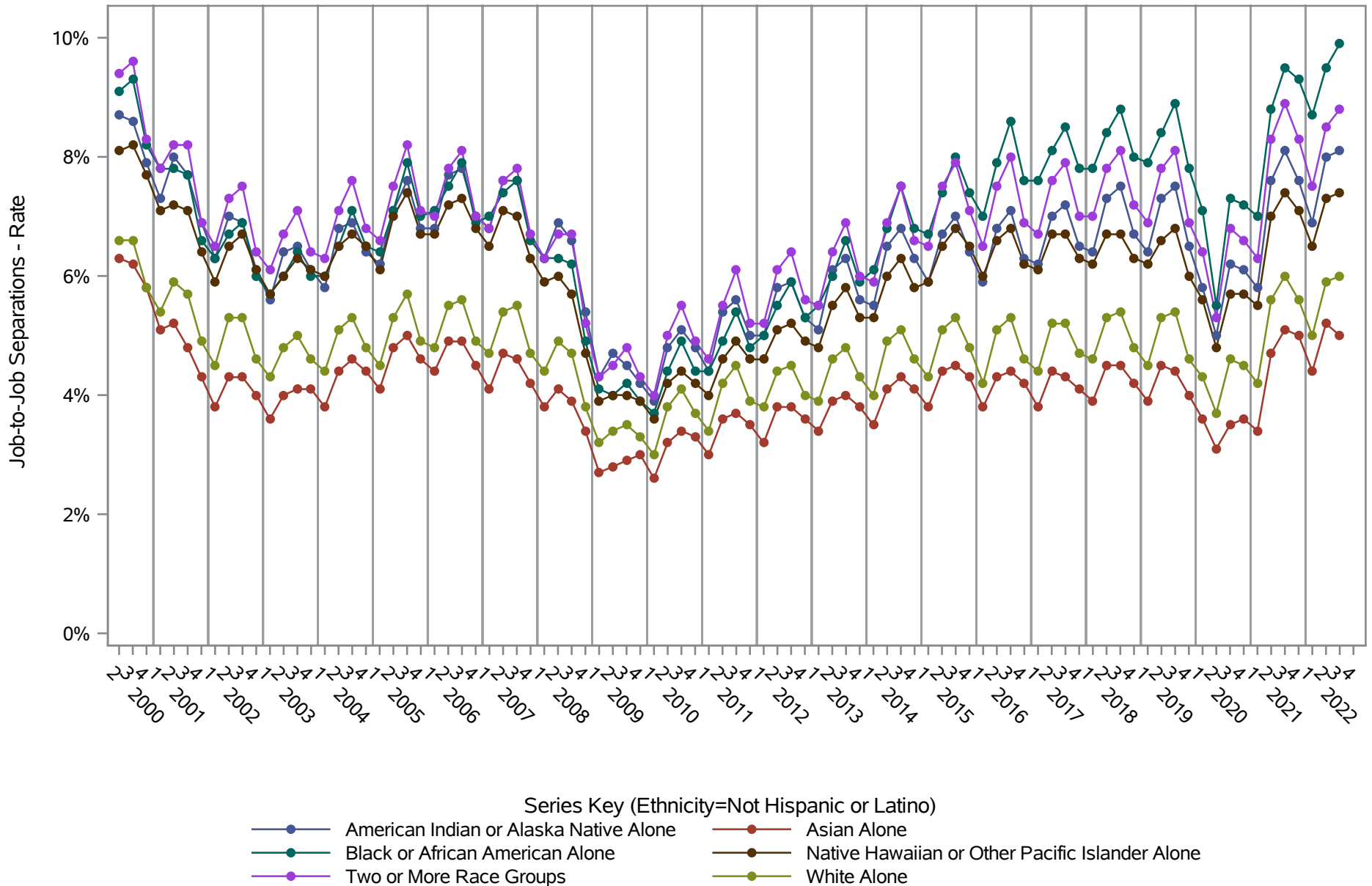


**Source: United States Census Bureau, Job-to-Job Flow Statistics, Release R2023Q4 (Beta)**

# National J2J Rates

## Job-to-Job Separations (Not Seasonally Adjusted)

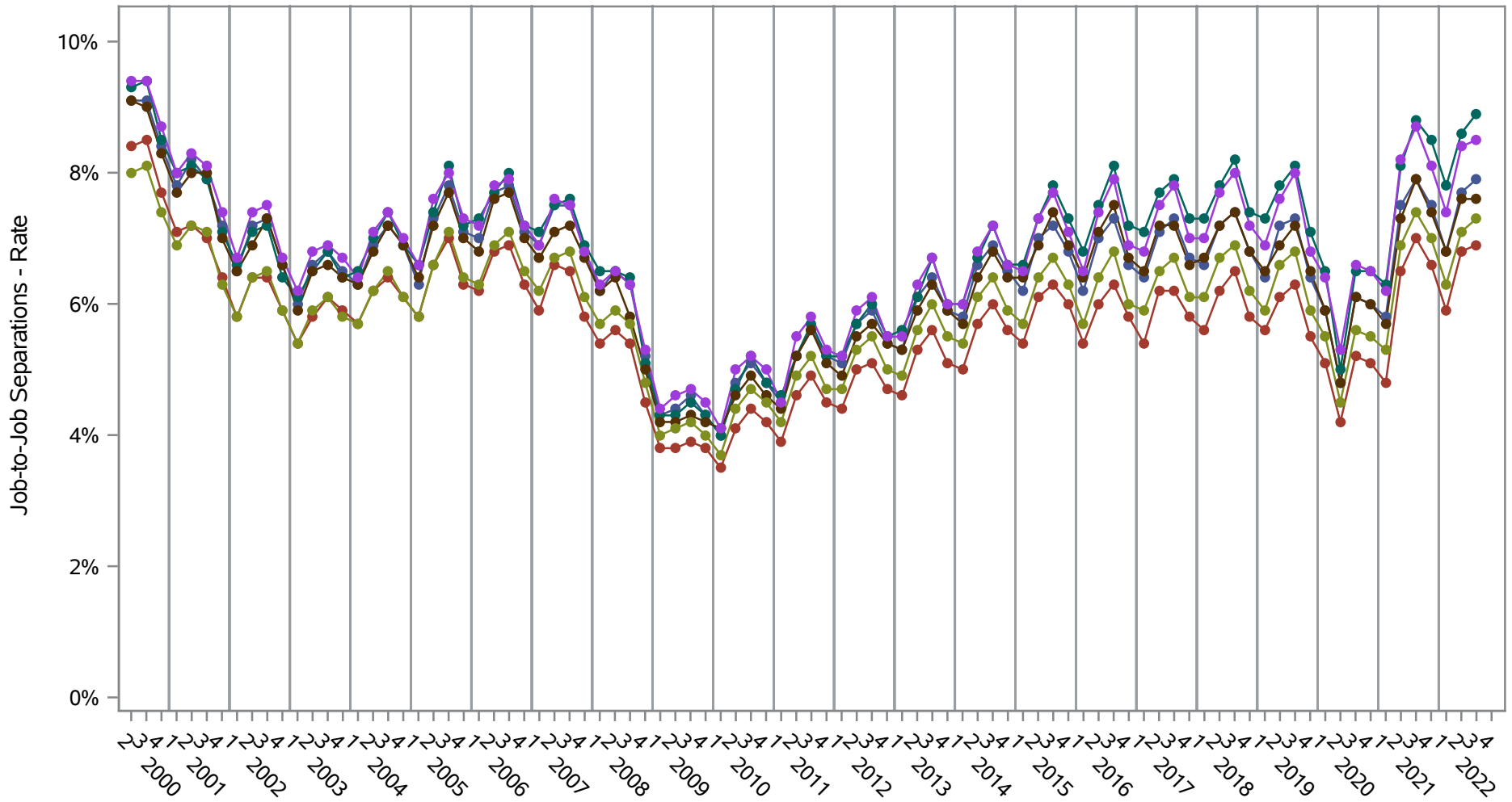
### by Race and Ethnicity (1 of 2) Ethnicity=Not Hispanic or Latino



Source: United States Census Bureau, Job-to-Job Flow Statistics, Release R2023Q4 (Beta)

# National J2J Rates

## Job-to-Job Separations (Not Seasonally Adjusted) by Race and Ethnicity (2 of 2) Ethnicity=Hispanic or Latino



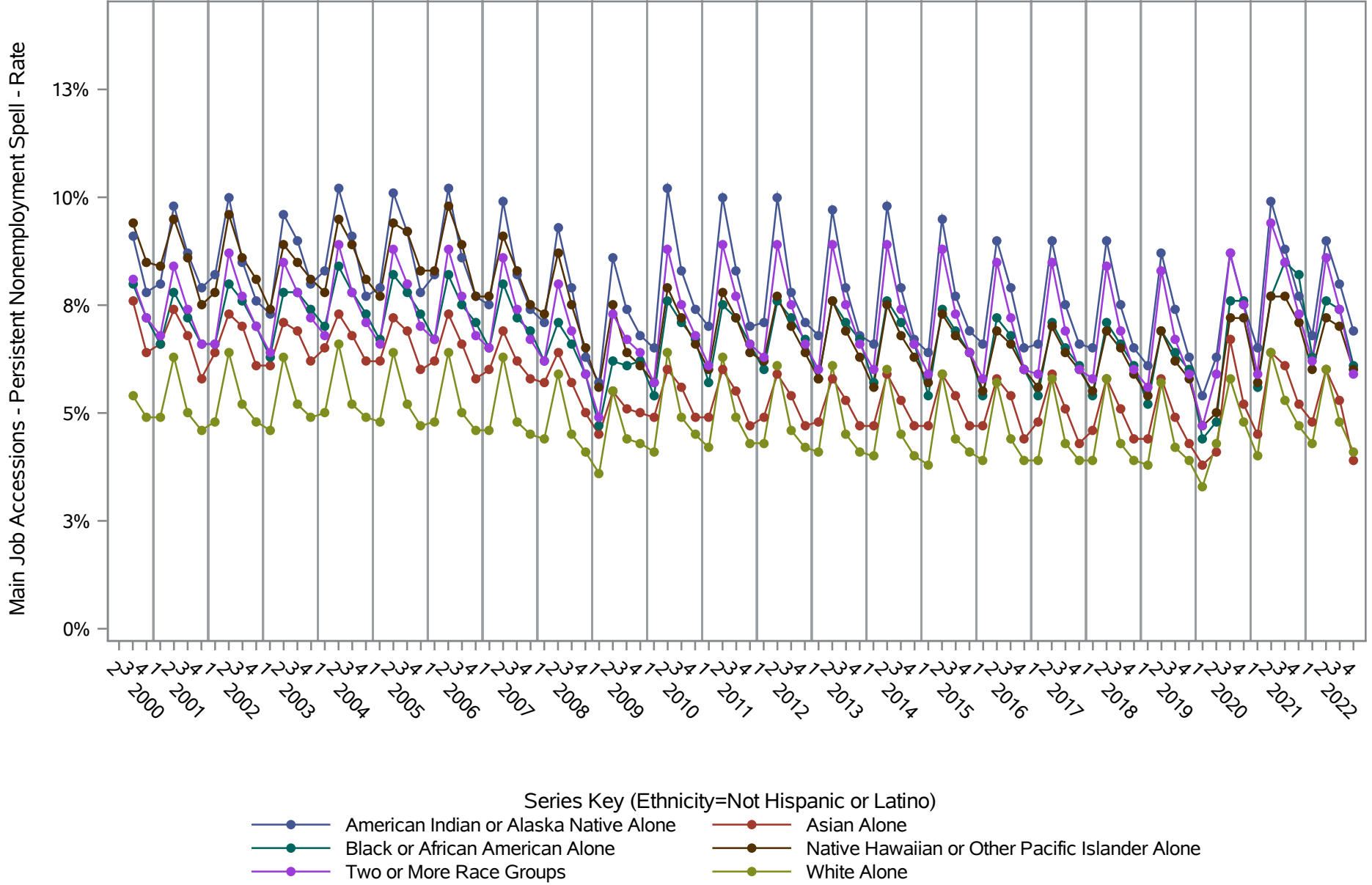
- Series Key (Ethnicity=Hispanic or Latino)
- American Indian or Alaska Native Alone
  - Asian Alone
  - Black or African American Alone
  - Native Hawaiian or Other Pacific Islander Alone
  - Two or More Race Groups
  - White Alone

**Source: United States Census Bureau, Job-to-Job Flow Statistics, Release R2023Q4 (Beta)**



# National J2J Rates

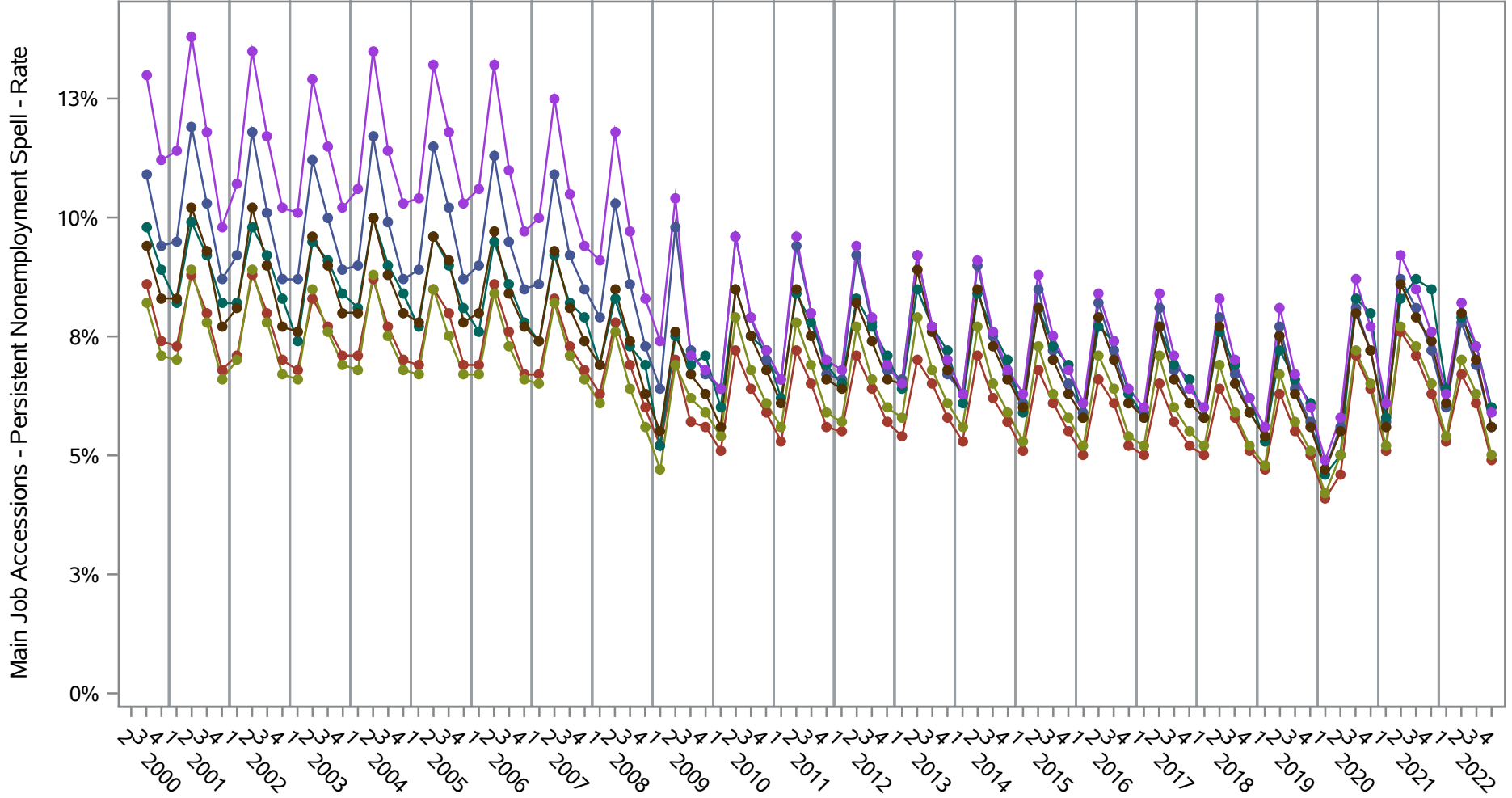
## Main Job Accessions - Persistent Nonemployment Spell (Not Seasonally Adjusted) by Race and Ethnicity (1 of 2) Ethnicity=Not Hispanic or Latino



Source: United States Census Bureau, Job-to-Job Flow Statistics, Release R2023Q4 (Beta)

# National J2J Rates

## Main Job Accessions - Persistent Nonemployment Spell (Not Seasonally Adjusted) by Race and Ethnicity (2 of 2) Ethnicity=Hispanic or Latino

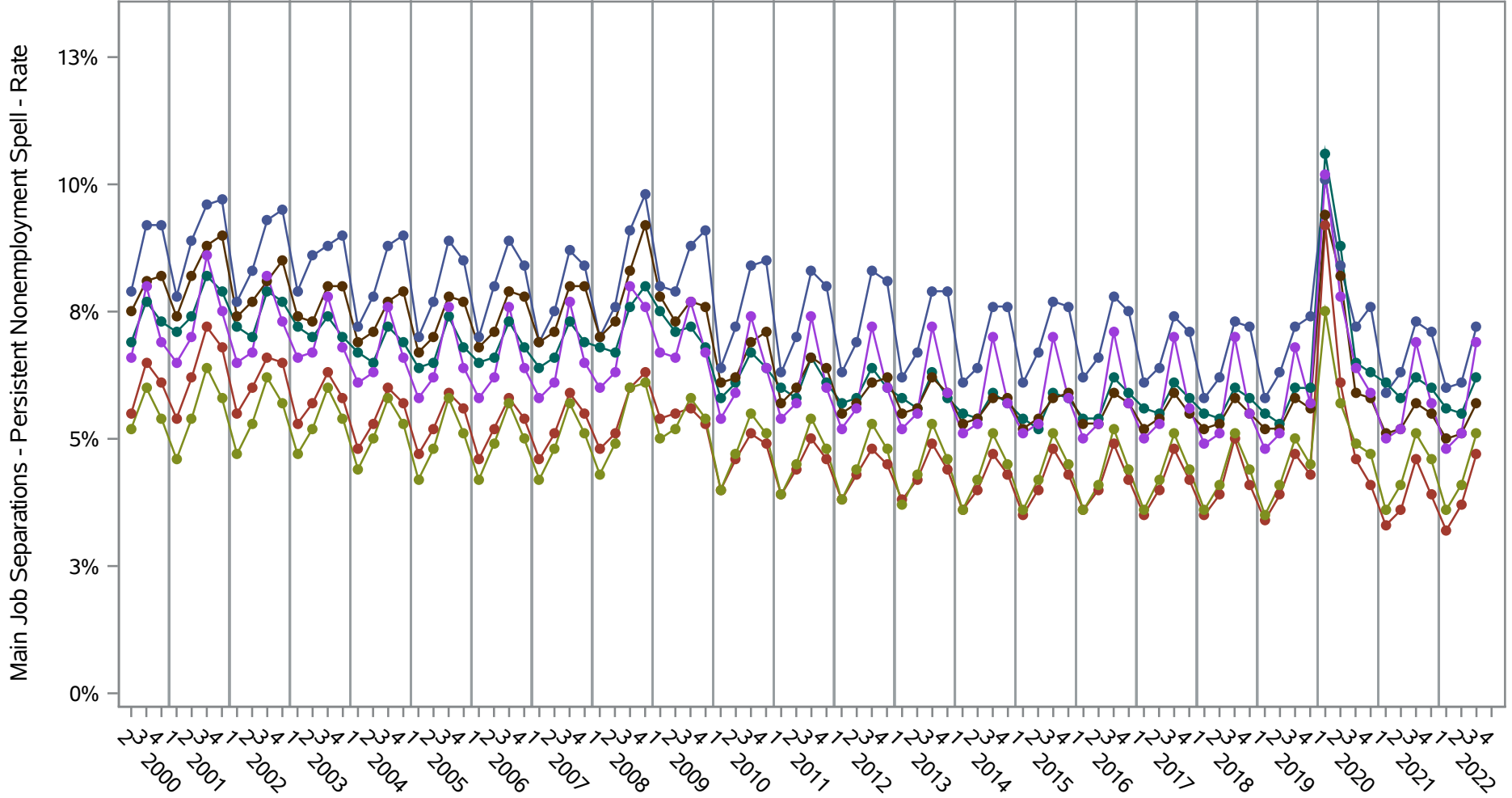


- Series Key (Ethnicity=Hispanic or Latino)
- American Indian or Alaska Native Alone
  - Asian Alone
  - Black or African American Alone
  - Native Hawaiian or Other Pacific Islander Alone
  - Two or More Race Groups
  - White Alone

**Source: United States Census Bureau, Job-to-Job Flow Statistics, Release R2023Q4 (Beta)**

# National J2J Rates

## Main Job Separations - Persistent Nonemployment Spell (Not Seasonally Adjusted) by Race and Ethnicity (1 of 2) Ethnicity=Not Hispanic or Latino

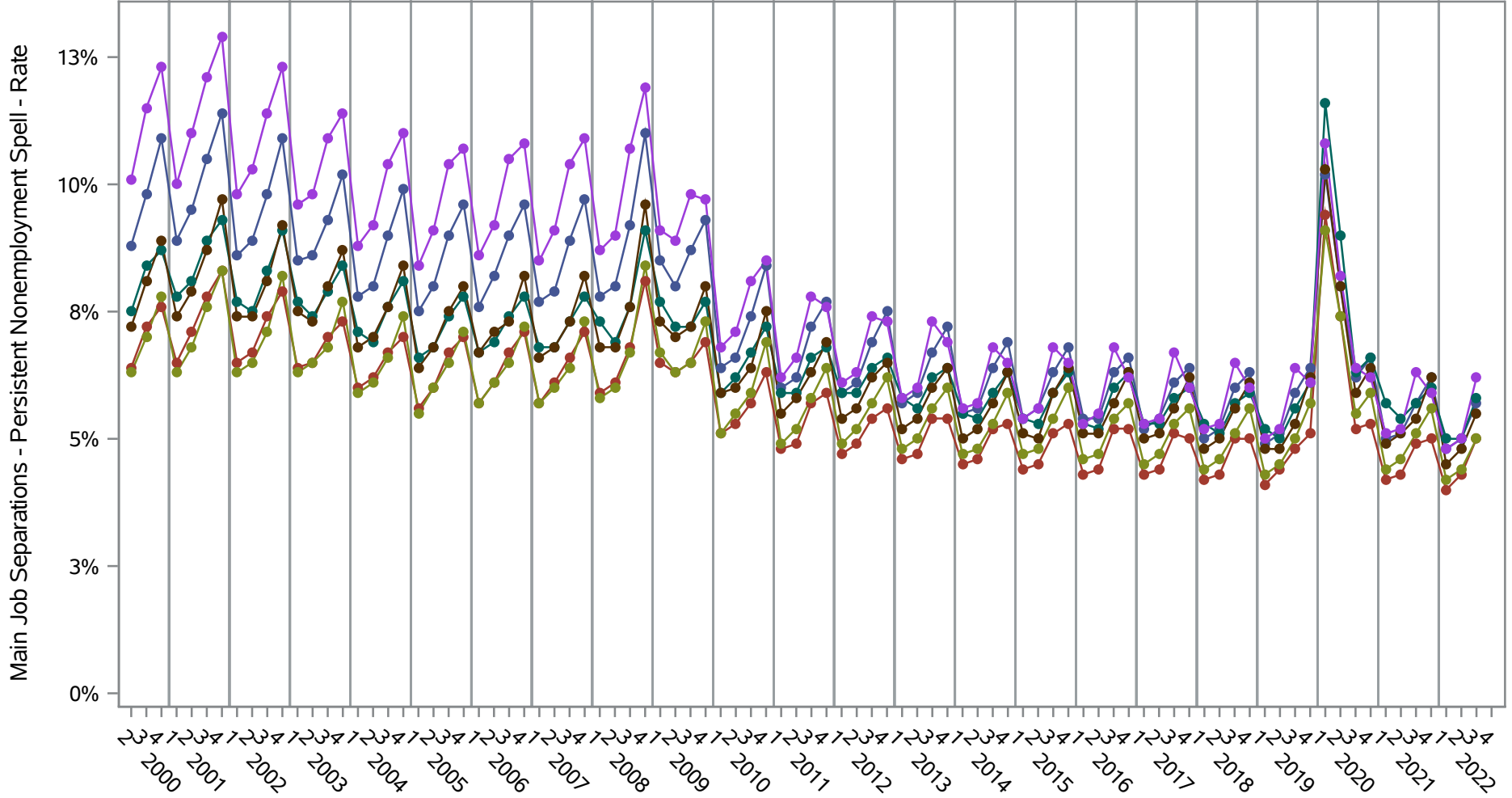


- Series Key (Ethnicity=Not Hispanic or Latino)
- American Indian or Alaska Native Alone
  - Asian Alone
  - Black or African American Alone
  - Native Hawaiian or Other Pacific Islander Alone
  - Two or More Race Groups
  - White Alone

**Source: United States Census Bureau, Job-to-Job Flow Statistics, Release R2023Q4 (Beta)**

# National J2J Rates

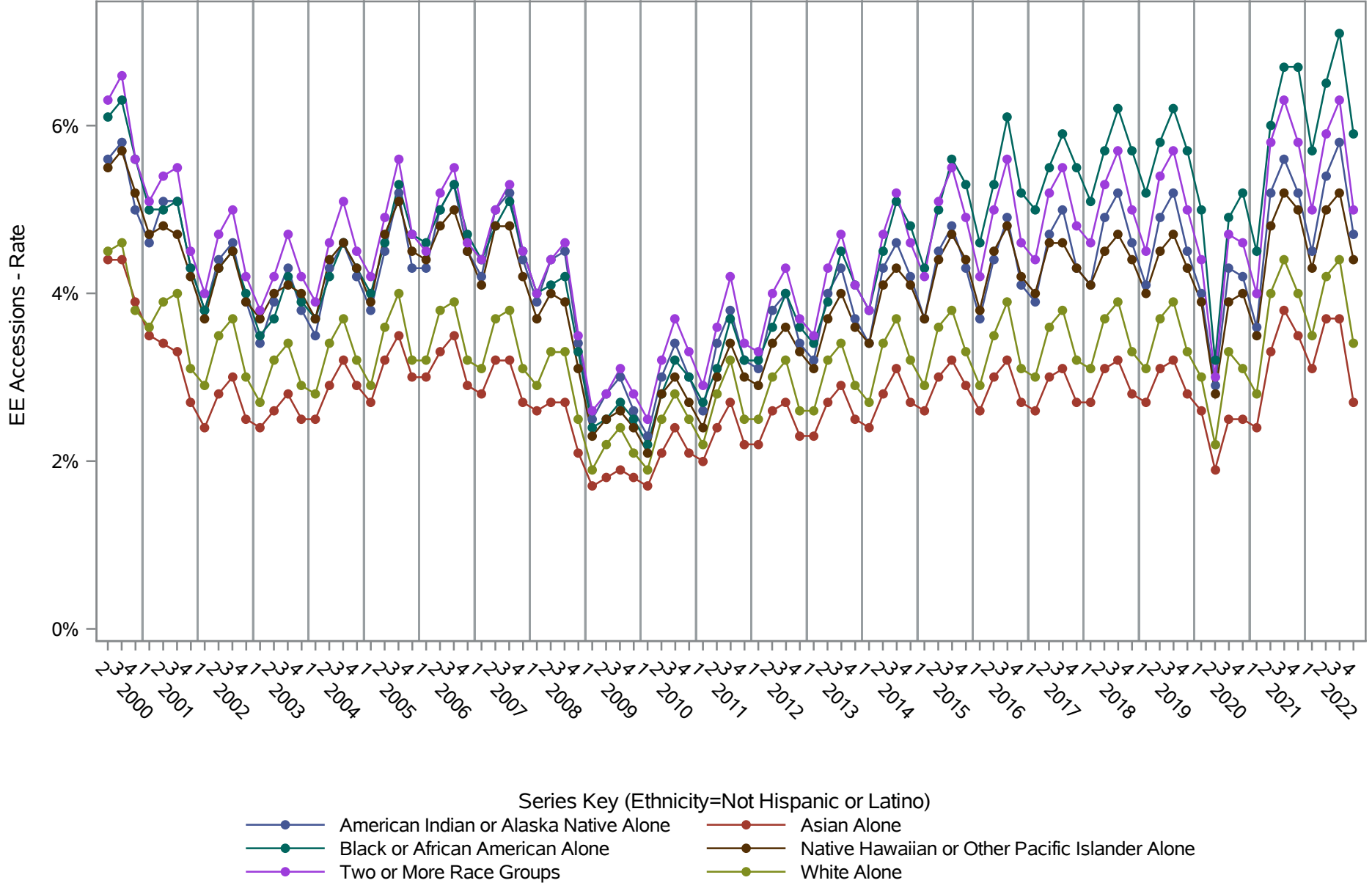
## Main Job Separations - Persistent Nonemployment Spell (Not Seasonally Adjusted) by Race and Ethnicity (2 of 2) Ethnicity=Hispanic or Latino



- Series Key (Ethnicity=Hispanic or Latino)
- American Indian or Alaska Native Alone
  - Asian Alone
  - Black or African American Alone
  - Native Hawaiian or Other Pacific Islander Alone
  - Two or More Race Groups
  - White Alone

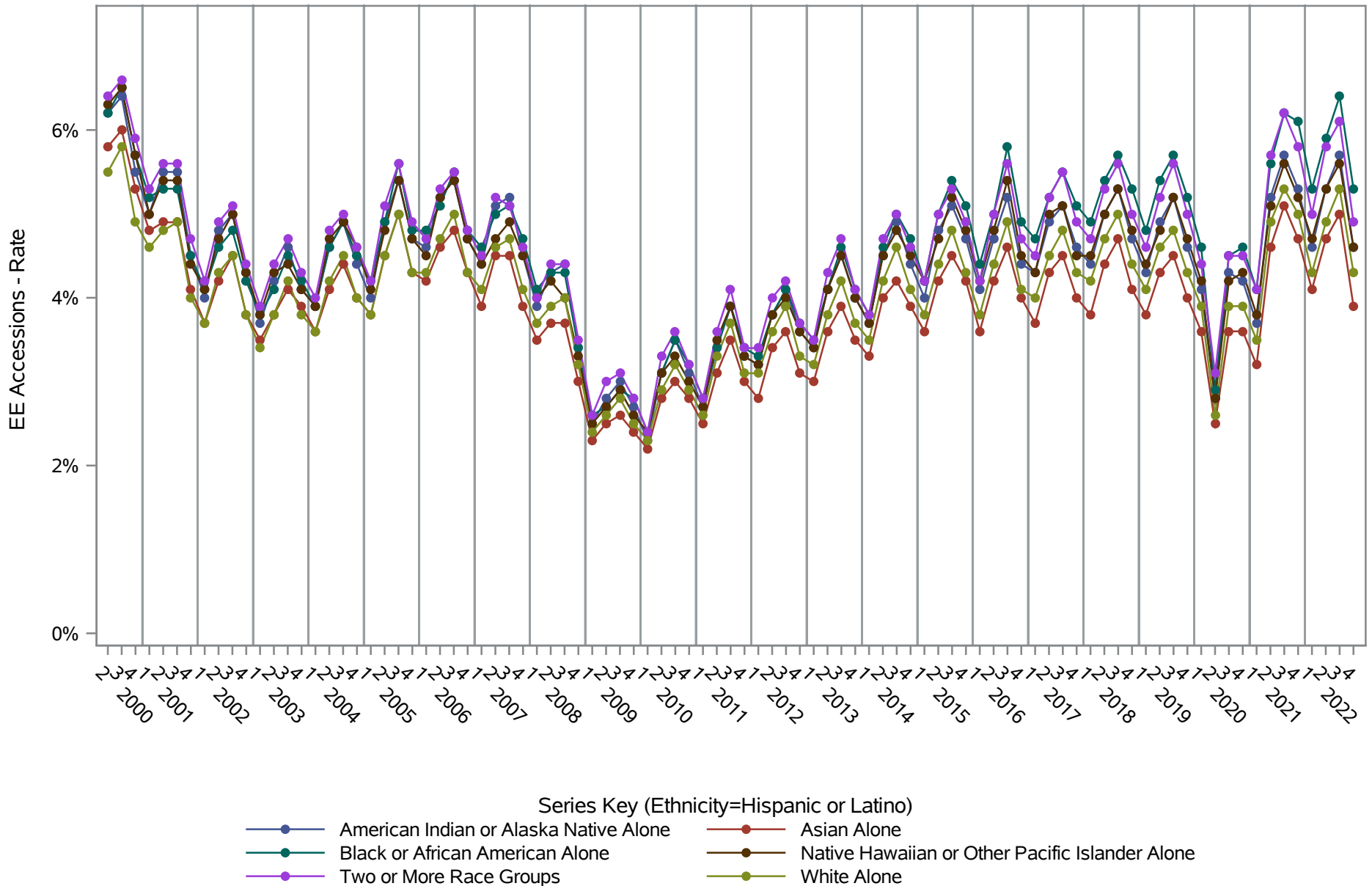
**Source: United States Census Bureau, Job-to-Job Flow Statistics, Release R2023Q4 (Beta)**

**National J2J Rates**  
**EE Accessions (Not Seasonally Adjusted)**  
*by Race and Ethnicity (1 of 2) Ethnicity=Not Hispanic or Latino*



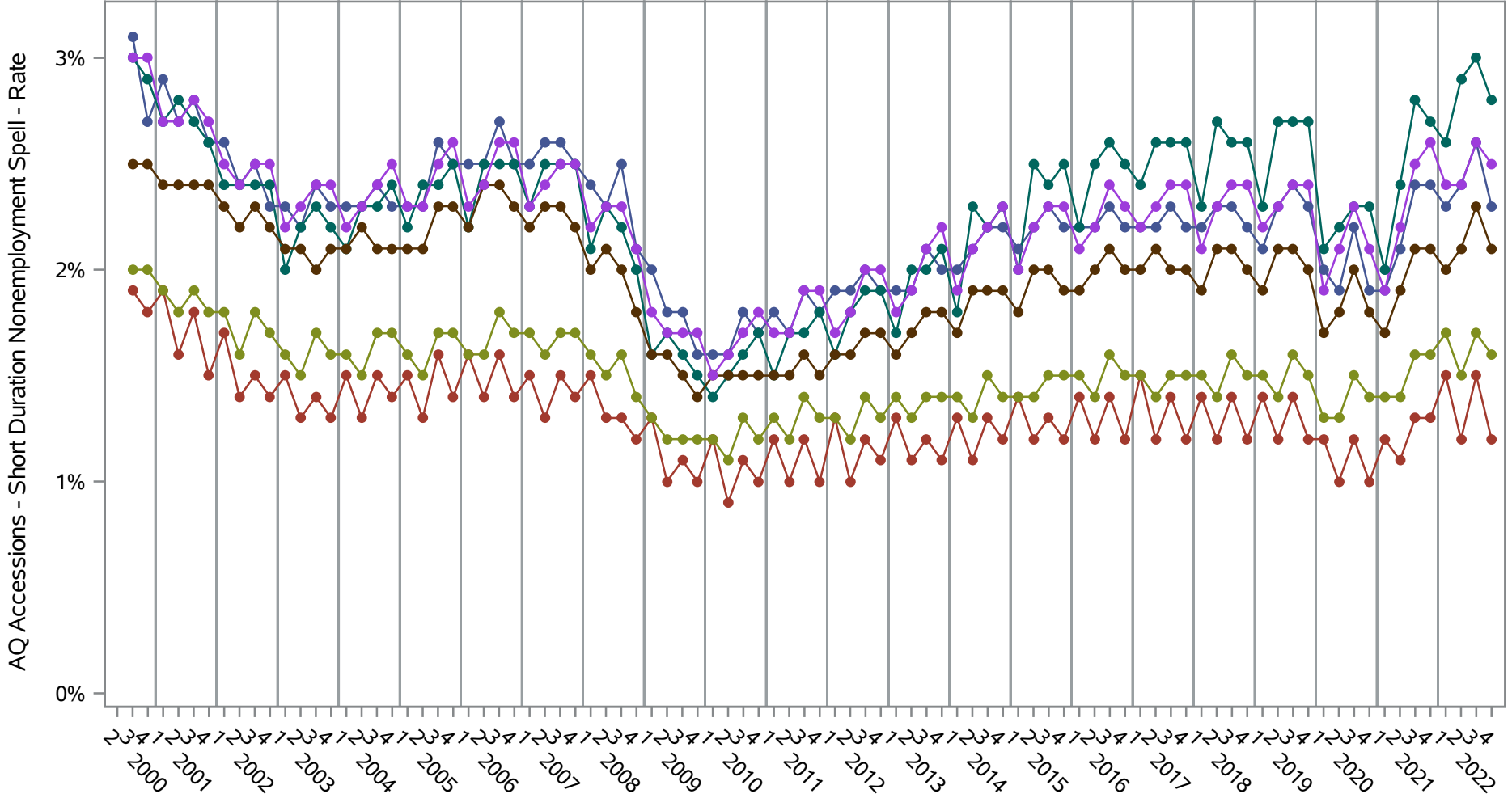
**Source: United States Census Bureau, Job-to-Job Flow Statistics, Release R2023Q4 (Beta)**

**National J2J Rates**  
**EE Accessions (Not Seasonally Adjusted)**  
*by Race and Ethnicity (2 of 2) Ethnicity=Hispanic or Latino*



**Source: United States Census Bureau, Job-to-Job Flow Statistics, Release R2023Q4 (Beta)**

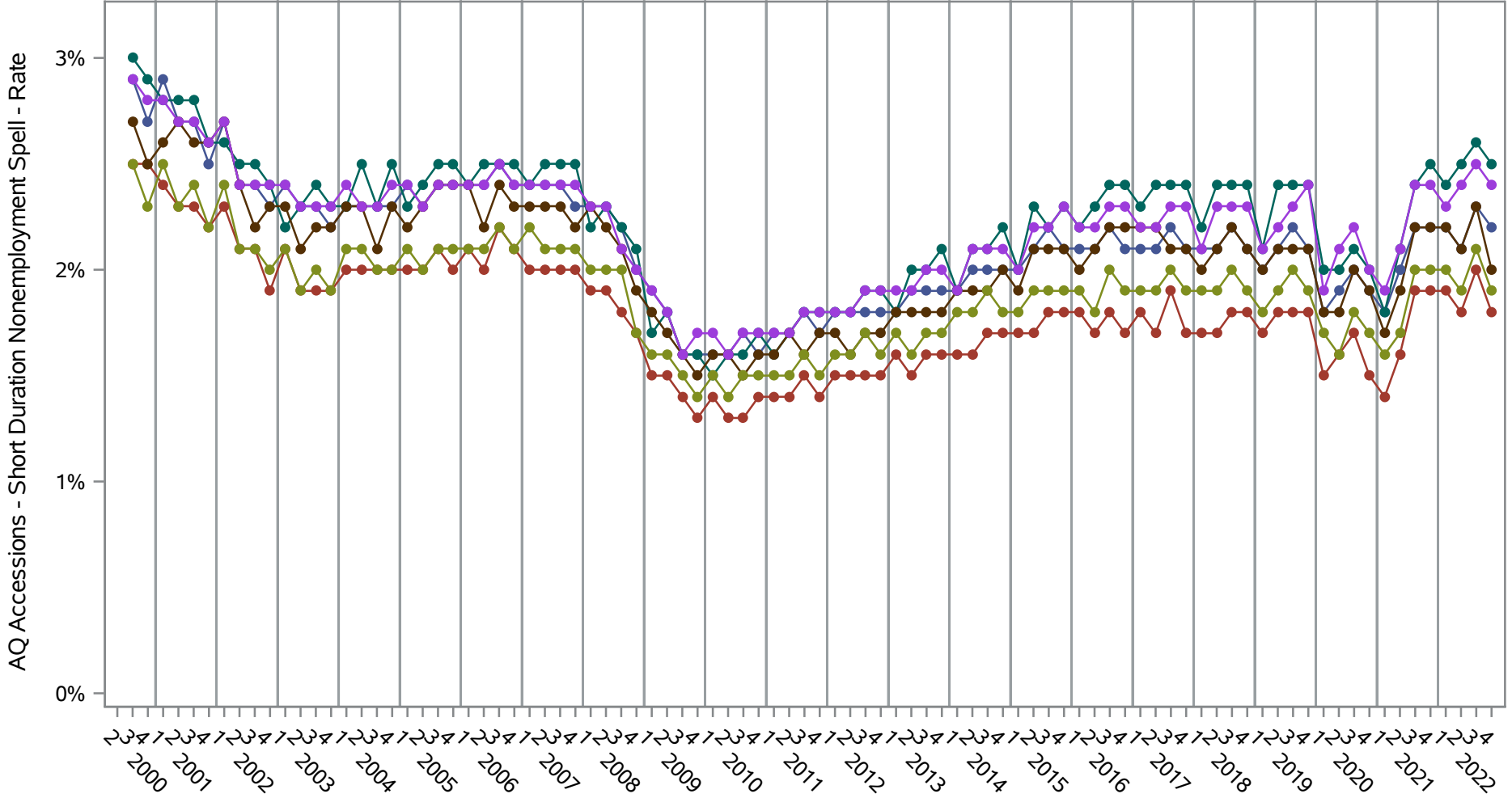
**National J2J Rates**  
**AQ Accessions - Short Duration Nonemployment Spell (Not Seasonally Adjusted)**  
*by Race and Ethnicity (1 of 2) Ethnicity=Not Hispanic or Latino*



- Series Key (Ethnicity=Not Hispanic or Latino)
- American Indian or Alaska Native Alone
  - Asian Alone
  - Black or African American Alone
  - Native Hawaiian or Other Pacific Islander Alone
  - Two or More Race Groups
  - White Alone

**Source: United States Census Bureau, Job-to-Job Flow Statistics, Release R2023Q4 (Beta)**

**National J2J Rates**  
**AQ Accessions - Short Duration Nonemployment Spell (Not Seasonally Adjusted)**  
*by Race and Ethnicity (2 of 2) Ethnicity=Hispanic or Latino*

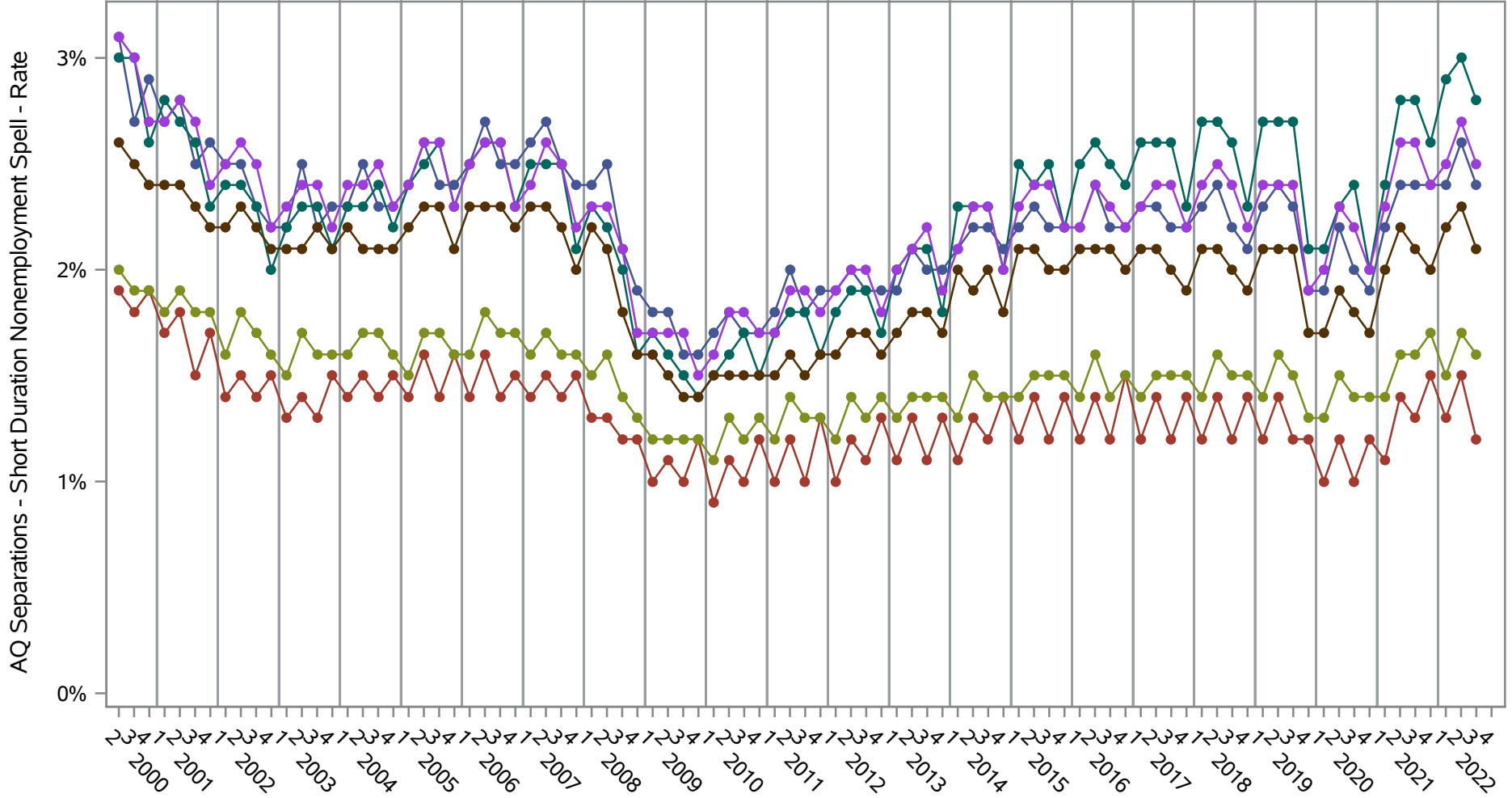


- Series Key (Ethnicity=Hispanic or Latino)
- American Indian or Alaska Native Alone
  - Asian Alone
  - Black or African American Alone
  - Native Hawaiian or Other Pacific Islander Alone
  - Two or More Race Groups
  - White Alone

**Source: United States Census Bureau, Job-to-Job Flow Statistics, Release R2023Q4 (Beta)**



**National J2J Rates**  
**AQ Separations - Short Duration Nonemployment Spell (Not Seasonally Adjusted)**  
*by Race and Ethnicity (1 of 2) Ethnicity=Not Hispanic or Latino*

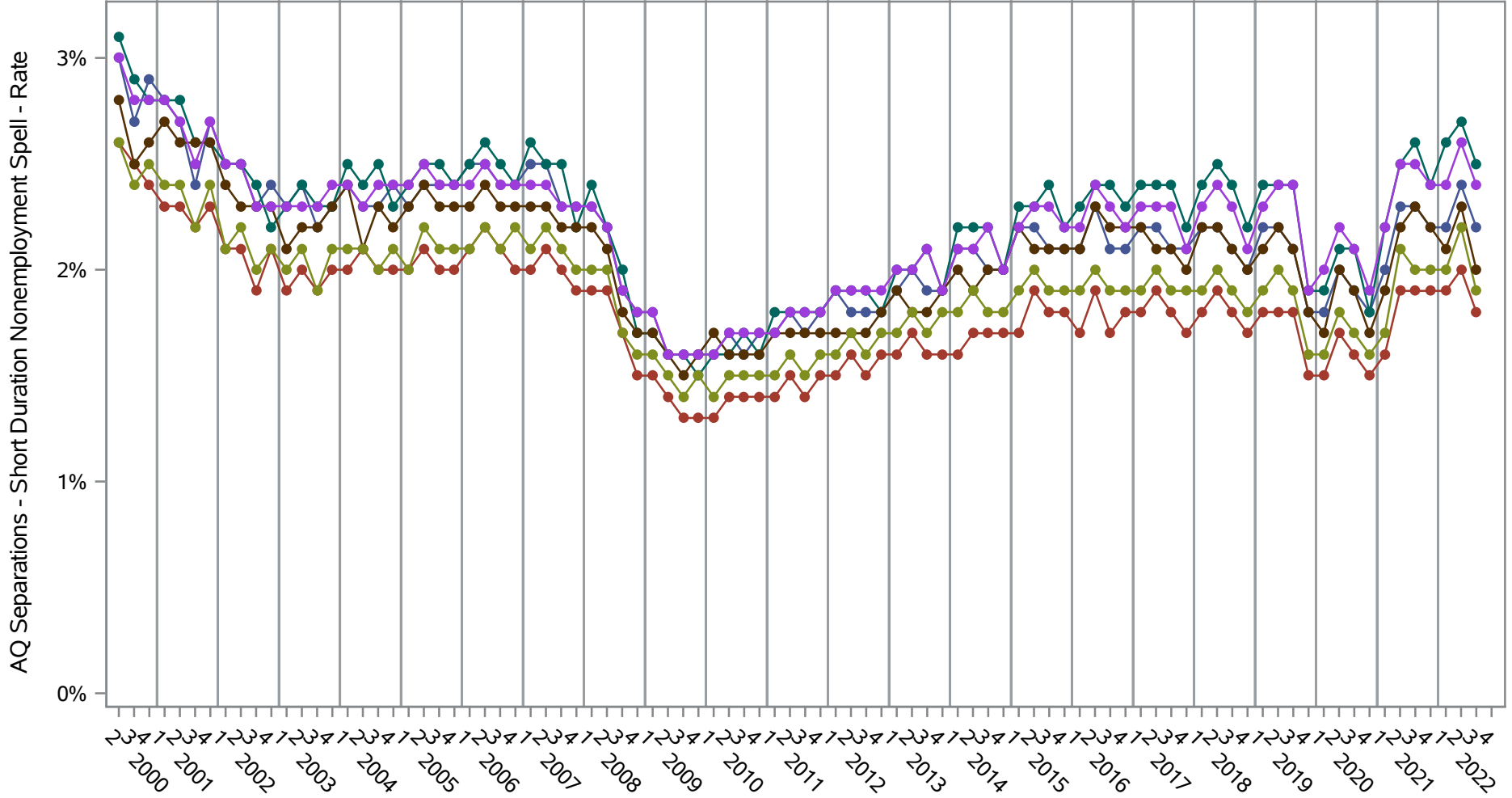


- Series Key (Ethnicity=Not Hispanic or Latino)
- American Indian or Alaska Native Alone
  - Asian Alone
  - Black or African American Alone
  - Native Hawaiian or Other Pacific Islander Alone
  - Two or More Race Groups
  - White Alone

**Source: United States Census Bureau, Job-to-Job Flow Statistics, Release R2023Q4 (Beta)**

# National J2J Rates

## AQ Separations - Short Duration Nonemployment Spell (Not Seasonally Adjusted) by Race and Ethnicity (2 of 2) Ethnicity=Hispanic or Latino



- Series Key (Ethnicity=Hispanic or Latino)
- American Indian or Alaska Native Alone
  - Asian Alone
  - Black or African American Alone
  - Native Hawaiian or Other Pacific Islander Alone
  - Two or More Race Groups
  - White Alone

**Source: United States Census Bureau, Job-to-Job Flow Statistics, Release R2023Q4 (Beta)**