

WORKSHOP

LODES & ONTHEMAP

Jody Hoon-Starr & Jeffrey McHugh

jody.alexander.hoon-starr@census.gov & jeffrey.p.mchugh@census.gov

DISCLAIMER

Any opinions and conclusions expressed herein are those of the author and do not represent the views of the U.S. Census Bureau.

All results have been reviewed to ensure that no confidential information is disclosed.

AGENDA

Concepts (15 mins)

Demo (45 mins)

OnTheMap Basics (15)

Satellite Validation of OTM (15)

DC Metro Blue Line Proposal (15)

Q&A (15 mins)

THE BASICS

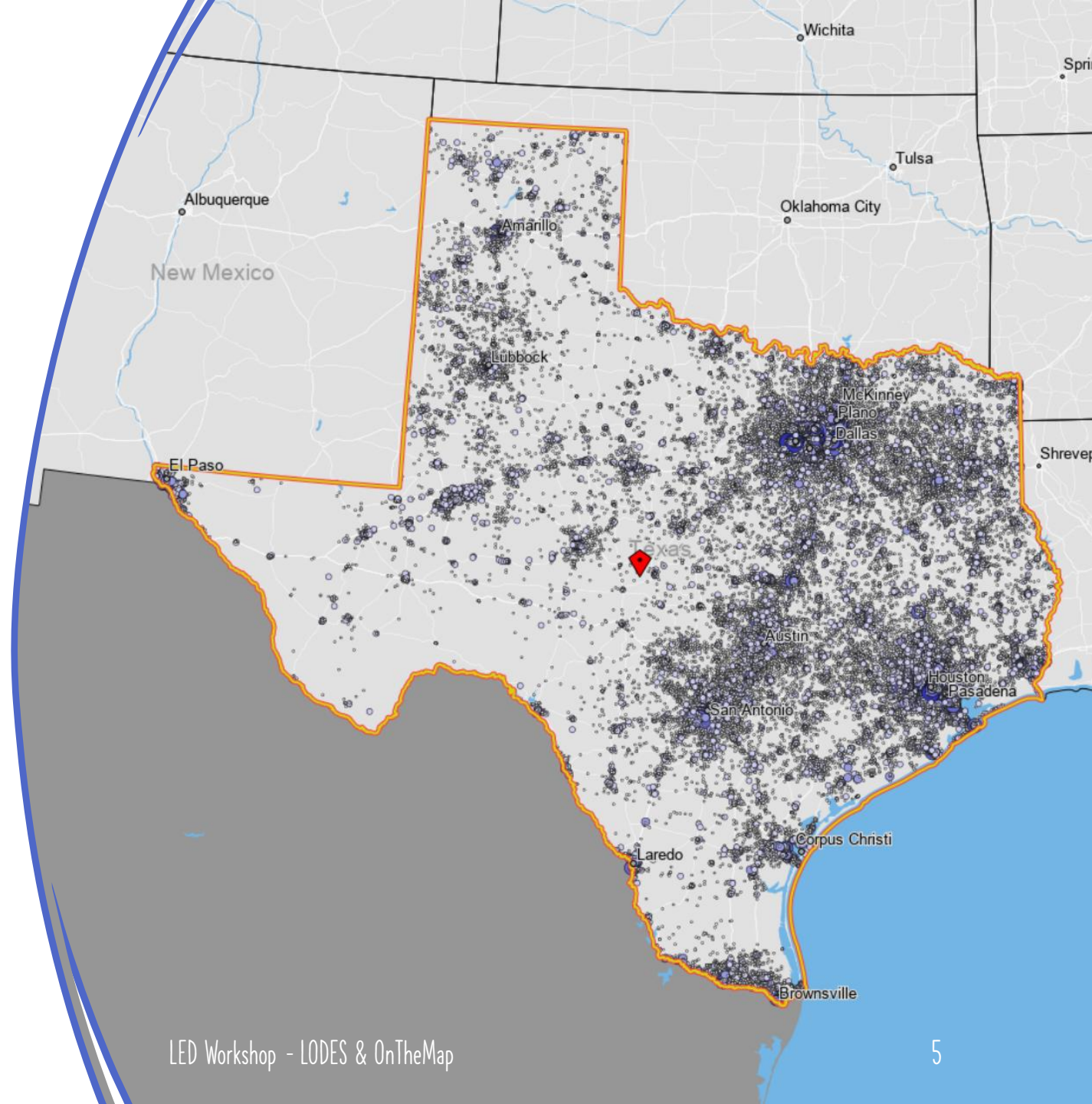
LEHD Origin-Destination Employment Statistics (LODES)
a partially synthetic dataset that describes geographic patterns of jobs by their employment locations and residential locations as well as the connections between the two locations

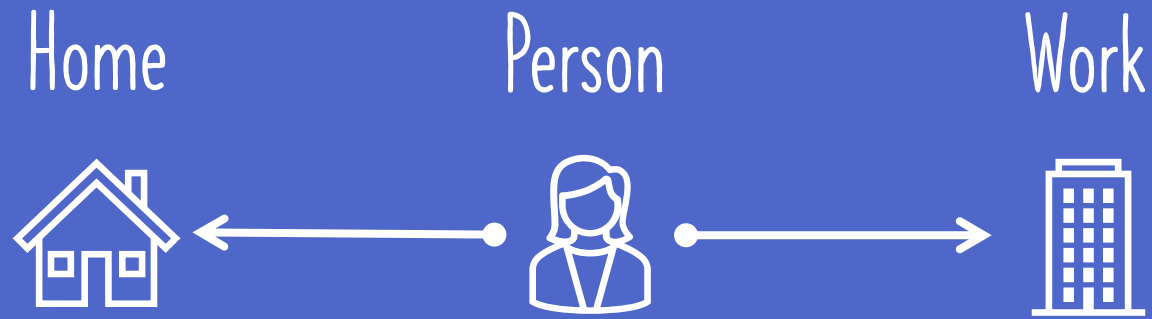
OnTheMap

a web-based mapping and reporting application that shows where workers are employed and where they live

via <https://onthemap.ces.census.gov/>

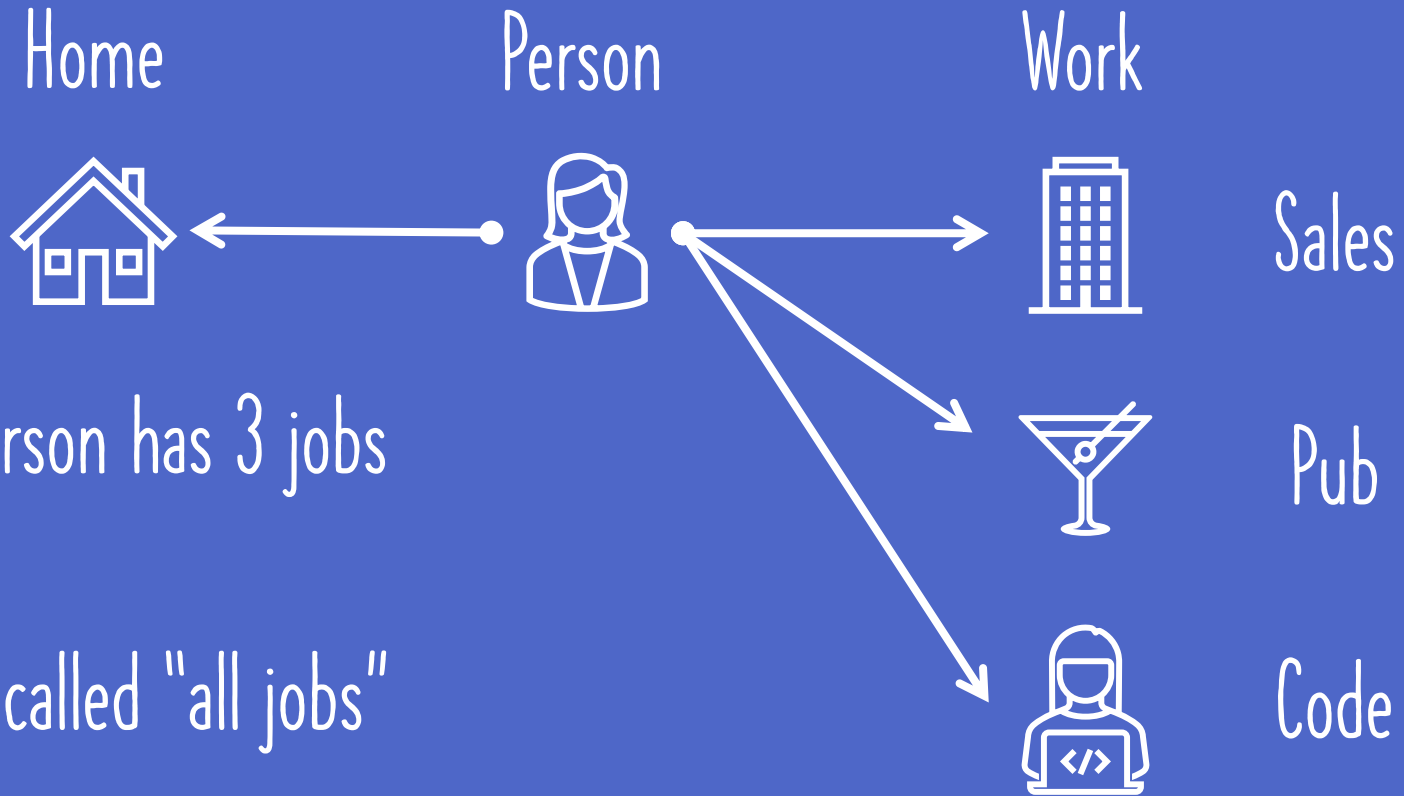
???





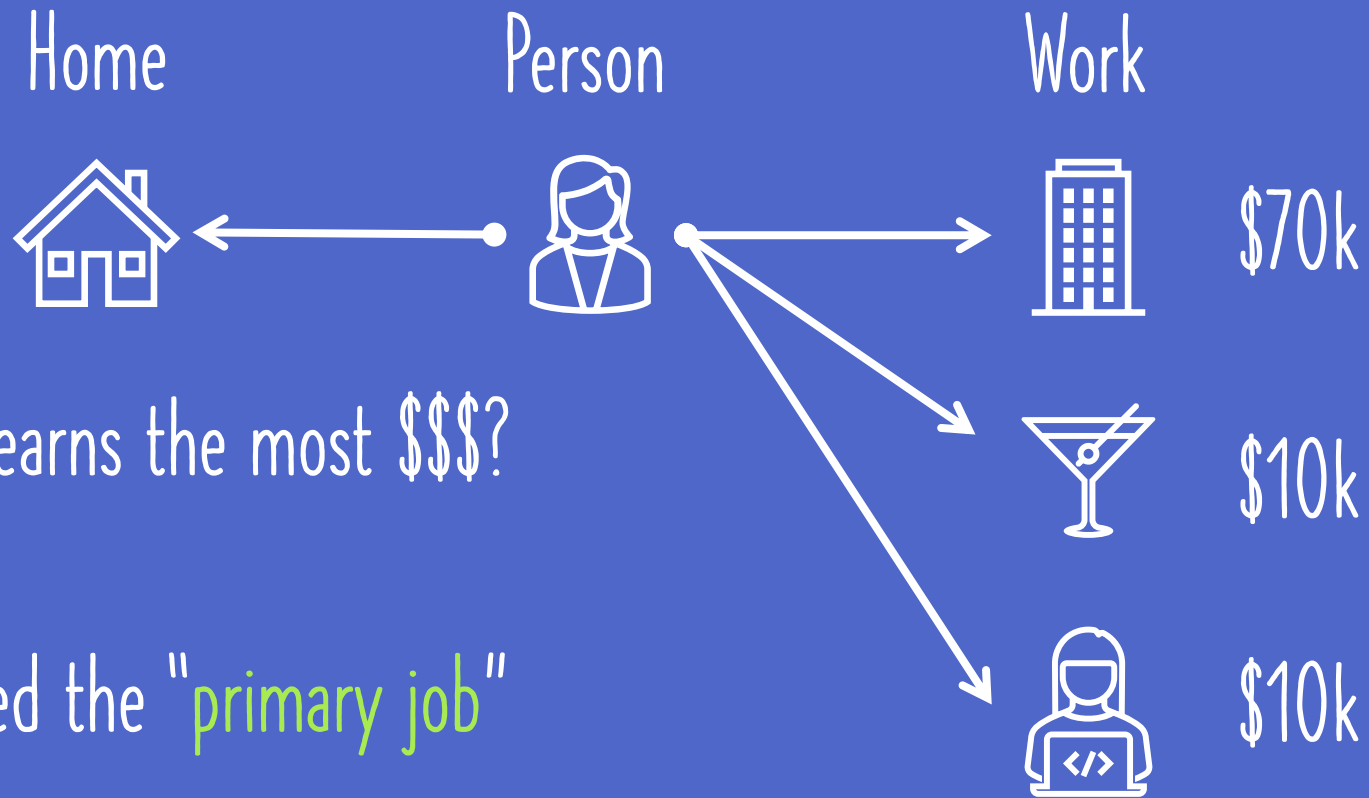
Residence
The location where a
worker lives

Job
A link between a
worker and a firm



This person has 3 jobs

This is called "all jobs"



Which job earns the most \$\$\$?

This is called the "primary job"

Home



Person



Work



Characteristics

Age, Race, Ethnicity,
Education, Sex

Home



Person



Work



Characteristics

Location

Home



Person



Work



Characteristics

Location, Industry,
Firm Age & Size

Home



Person



Work



Private Business
Government (fed, state, local)
Military
Self-Employed
Etc.

PRIVATE INDUSTRY COVERAGE

Source: lehd snapshot documentation ([link](#))

All

Wage earners
Executives
Supervisors
Clerical workers
Part-time workers
Pieceworkers

Most/Many

Corporate officials
Farmworkers

None

Self-employed
Business owners
Railroad workers
Commission sales
Some seasonal workers
Family employee of family business
Etc.

GOVERNMENT COVERAGE

Source: lehd snapshot docs ([link](#))

lodes design comparison doc ([link](#))

All

Most/Many

None

State govt employees

Local govt employees

Federal civilian employees

Elected officials

Legislature members

Judiciary members

Uniformed military

Security agencies (FBI, CIA, DHS, etc.)

USPS postal workers

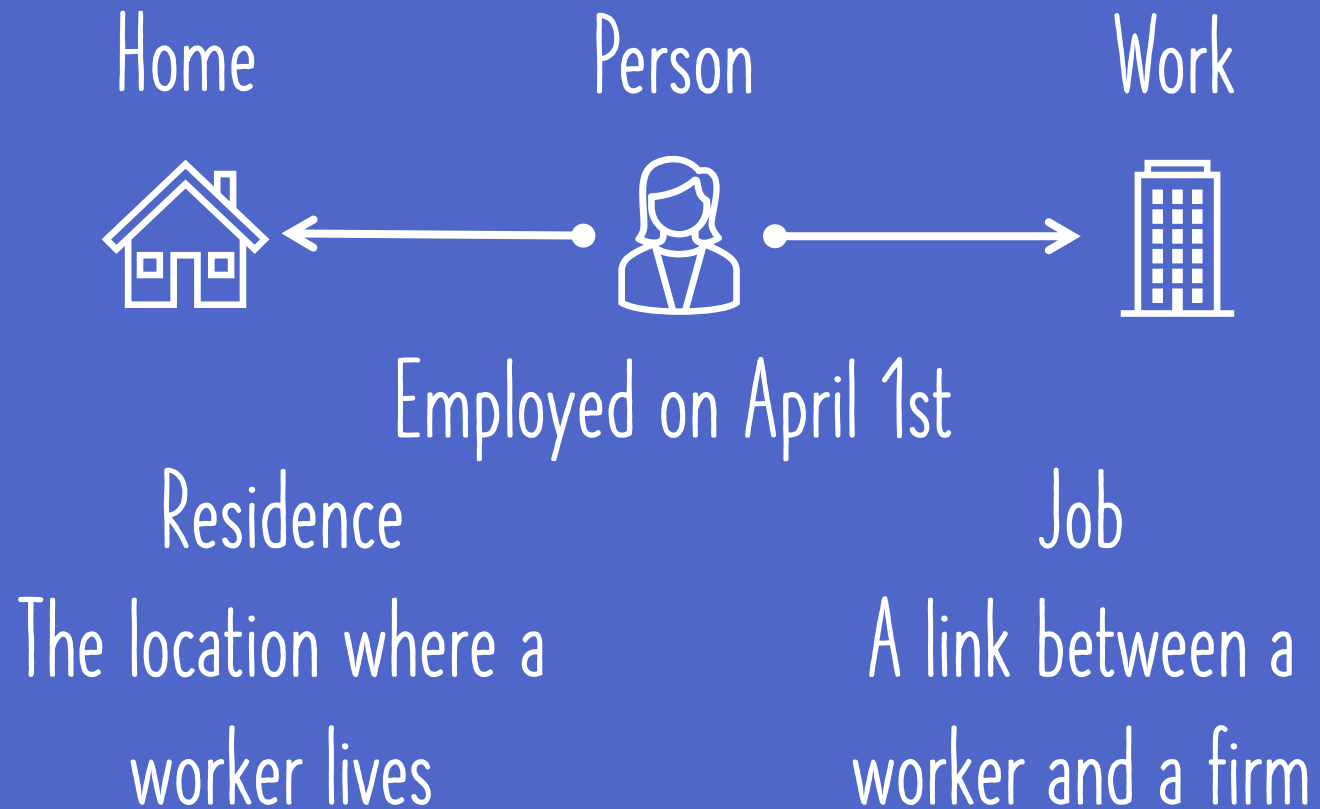
Tax inspectors

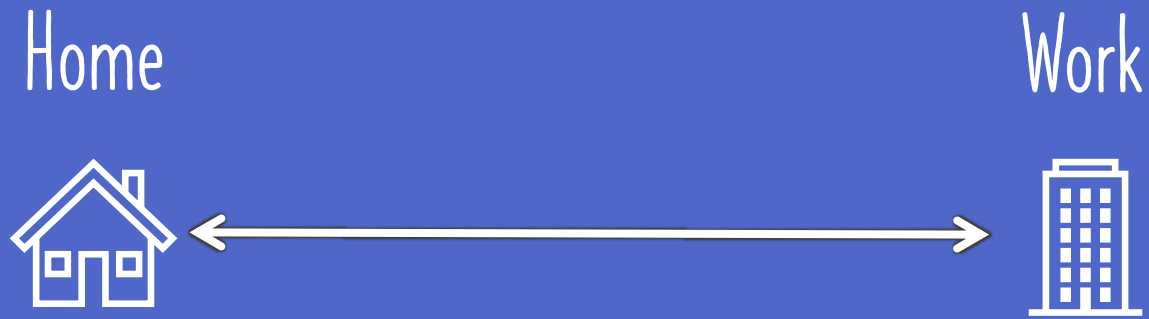
Etc.

COVERAGE SUMMARY

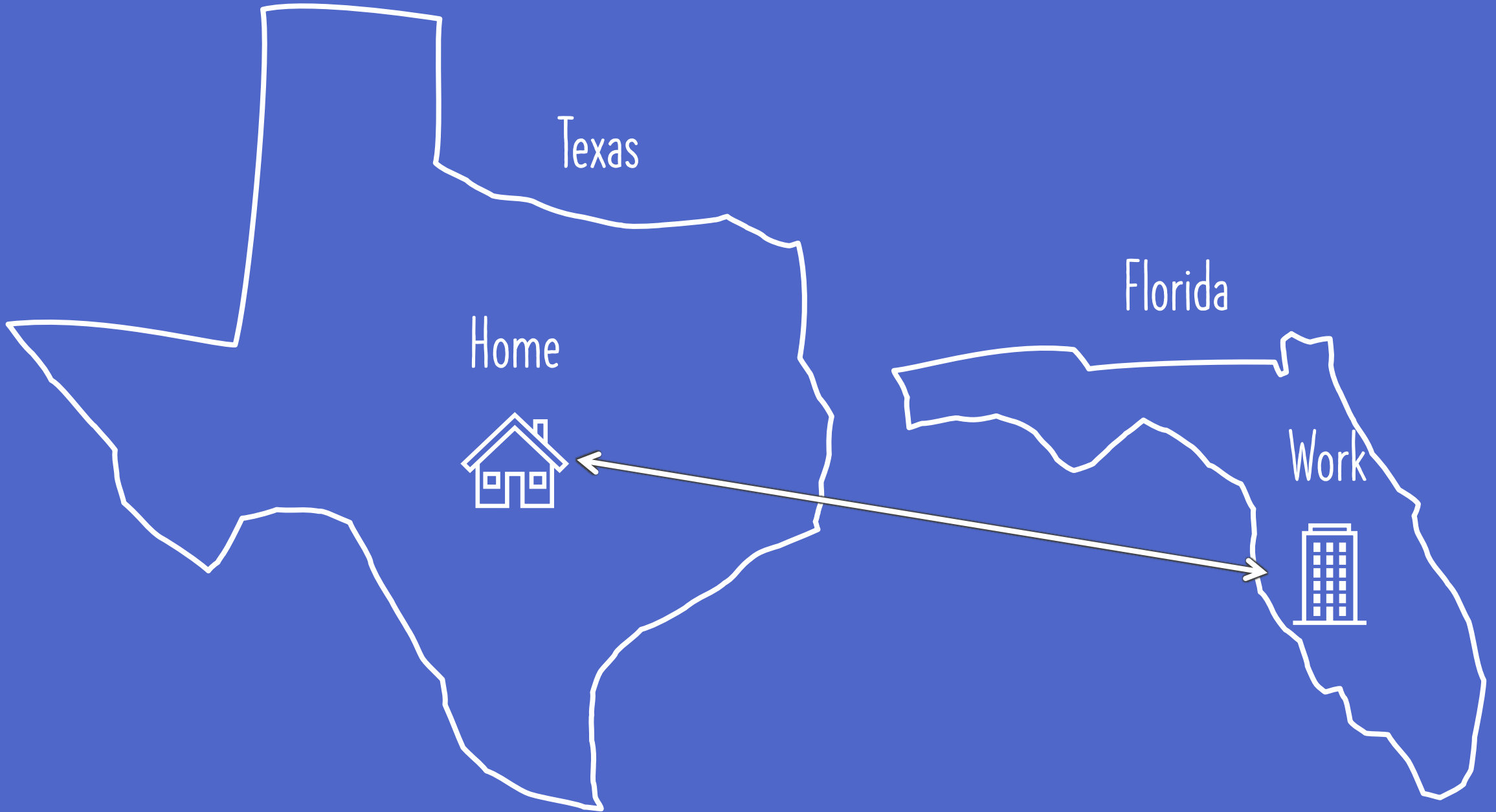
~97% of private employment
Most state & local govt jobs
Ballpark half of federal jobs

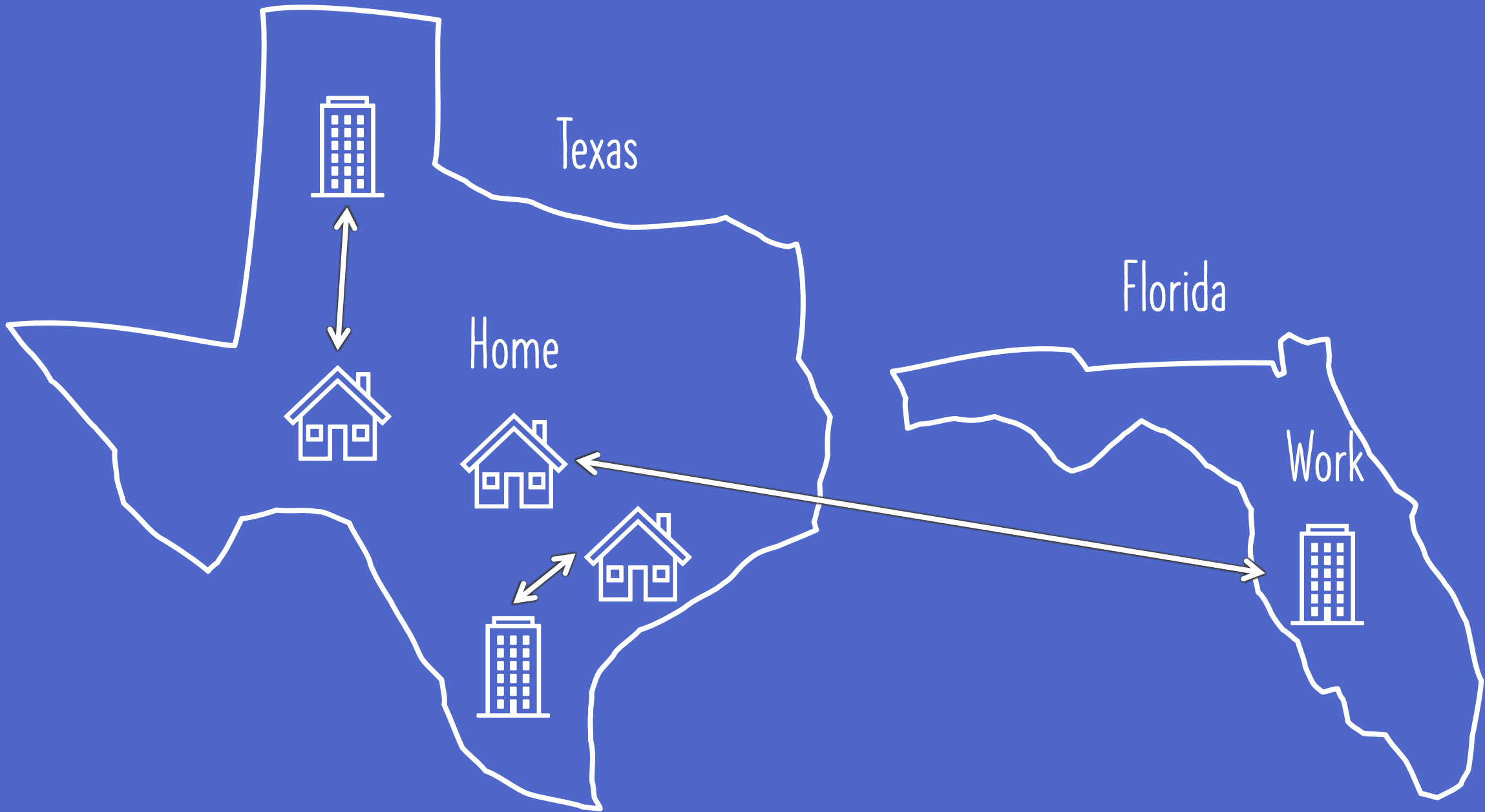
No margin of error, not a survey
Coverage gaps are important

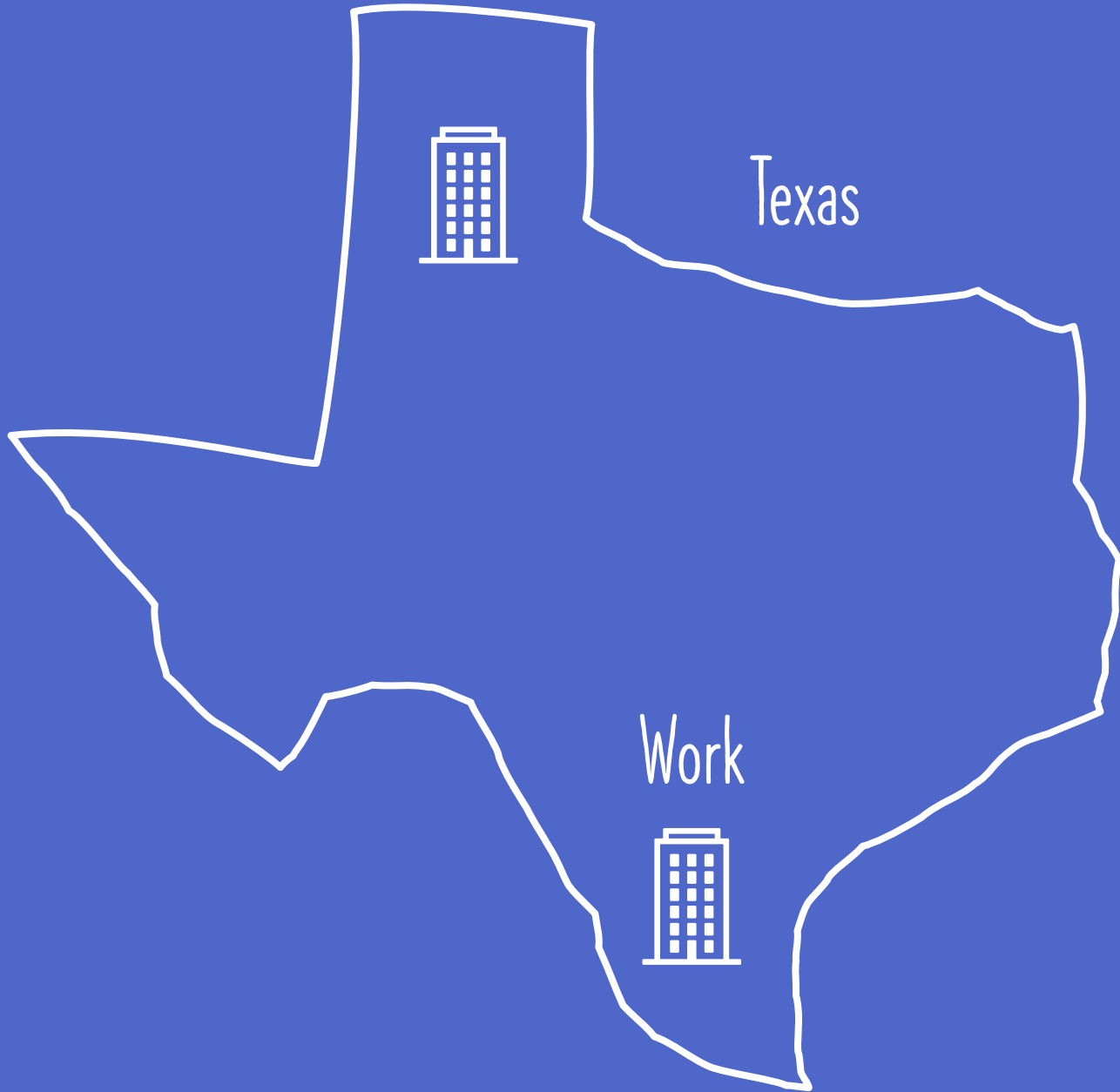




Imagine there's a connection ↑
that contains all the information
about the job, business, person,
etc.

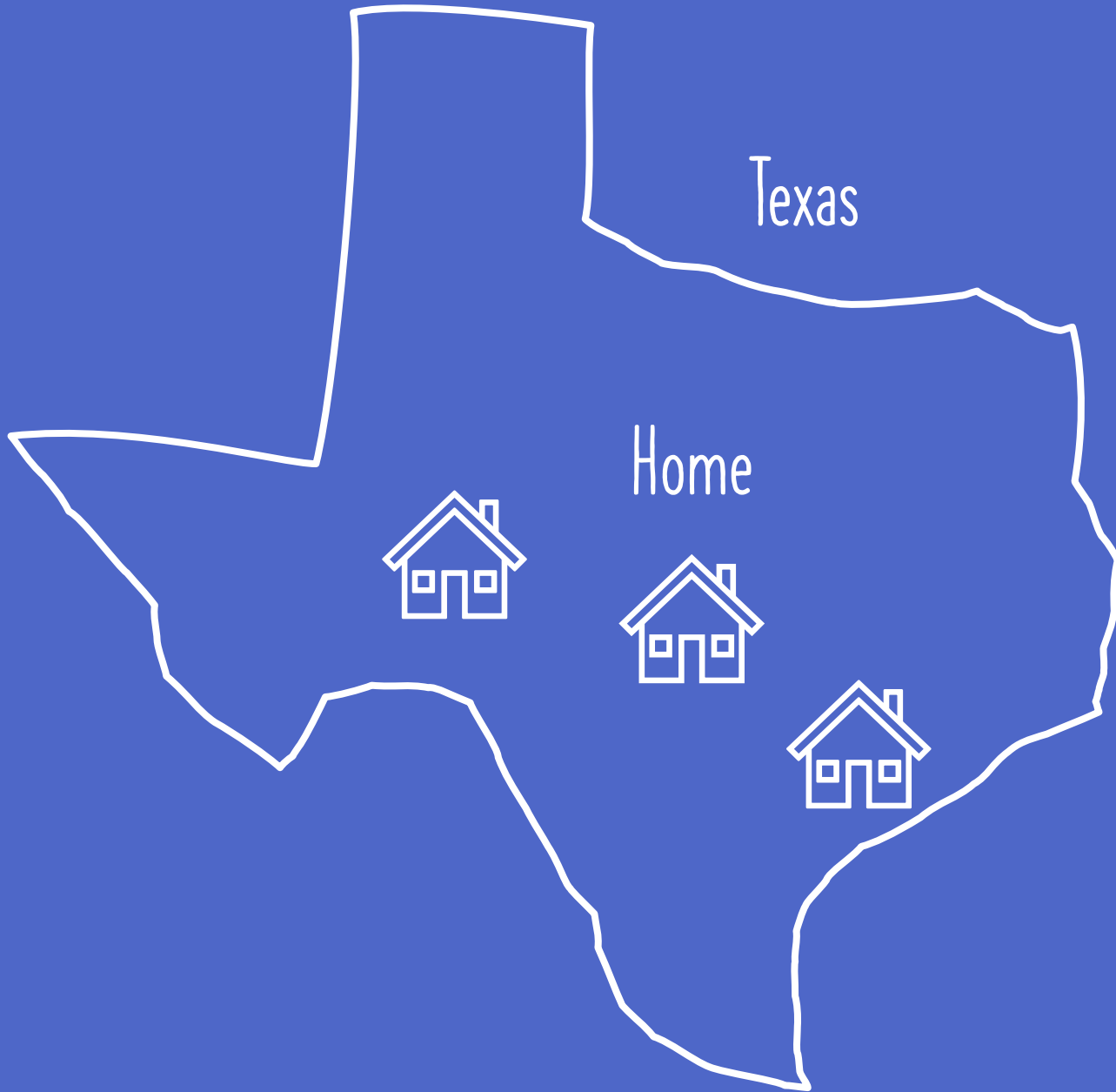






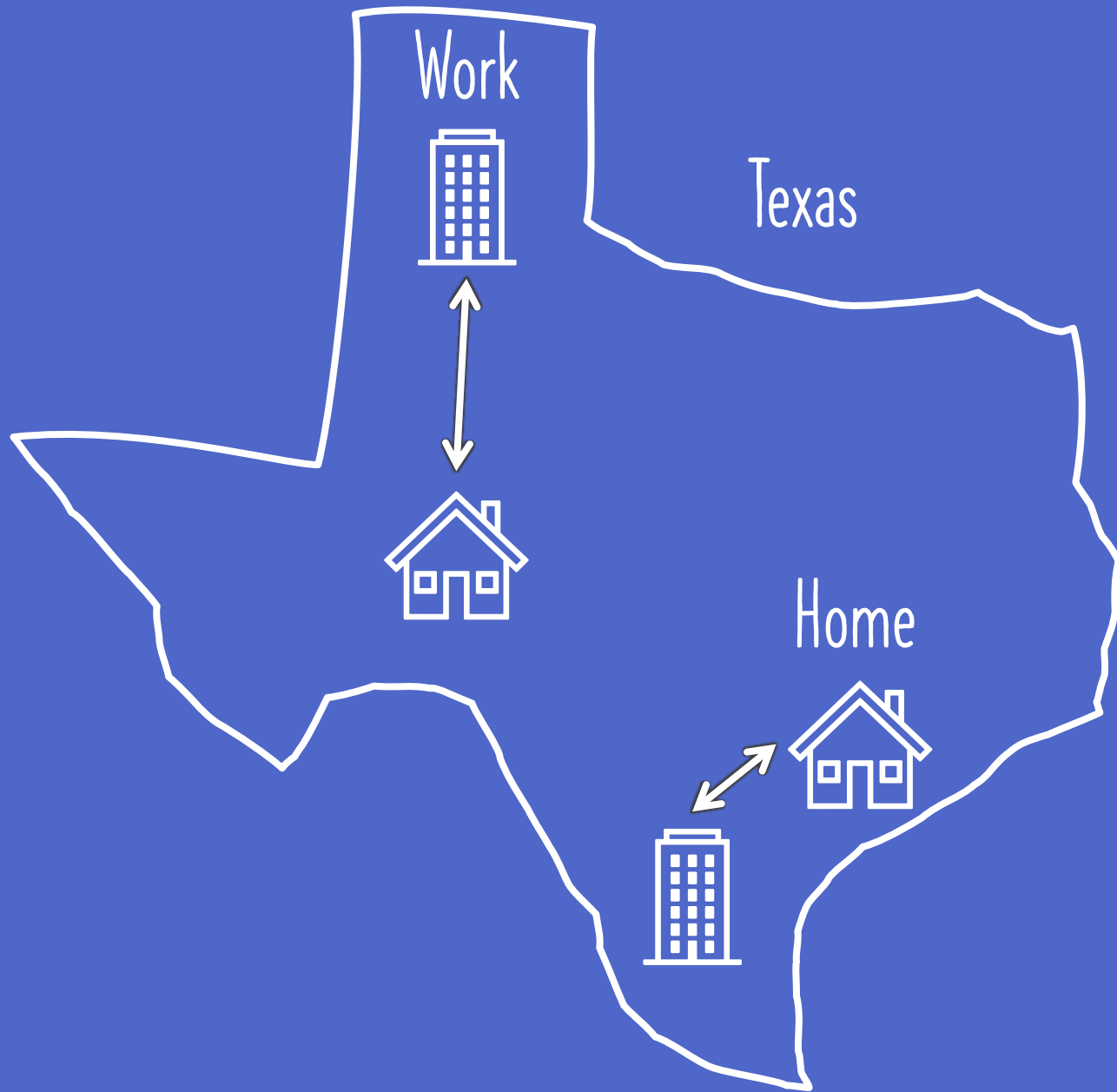
Work Analysis

2 Jobs with work locations in Texas



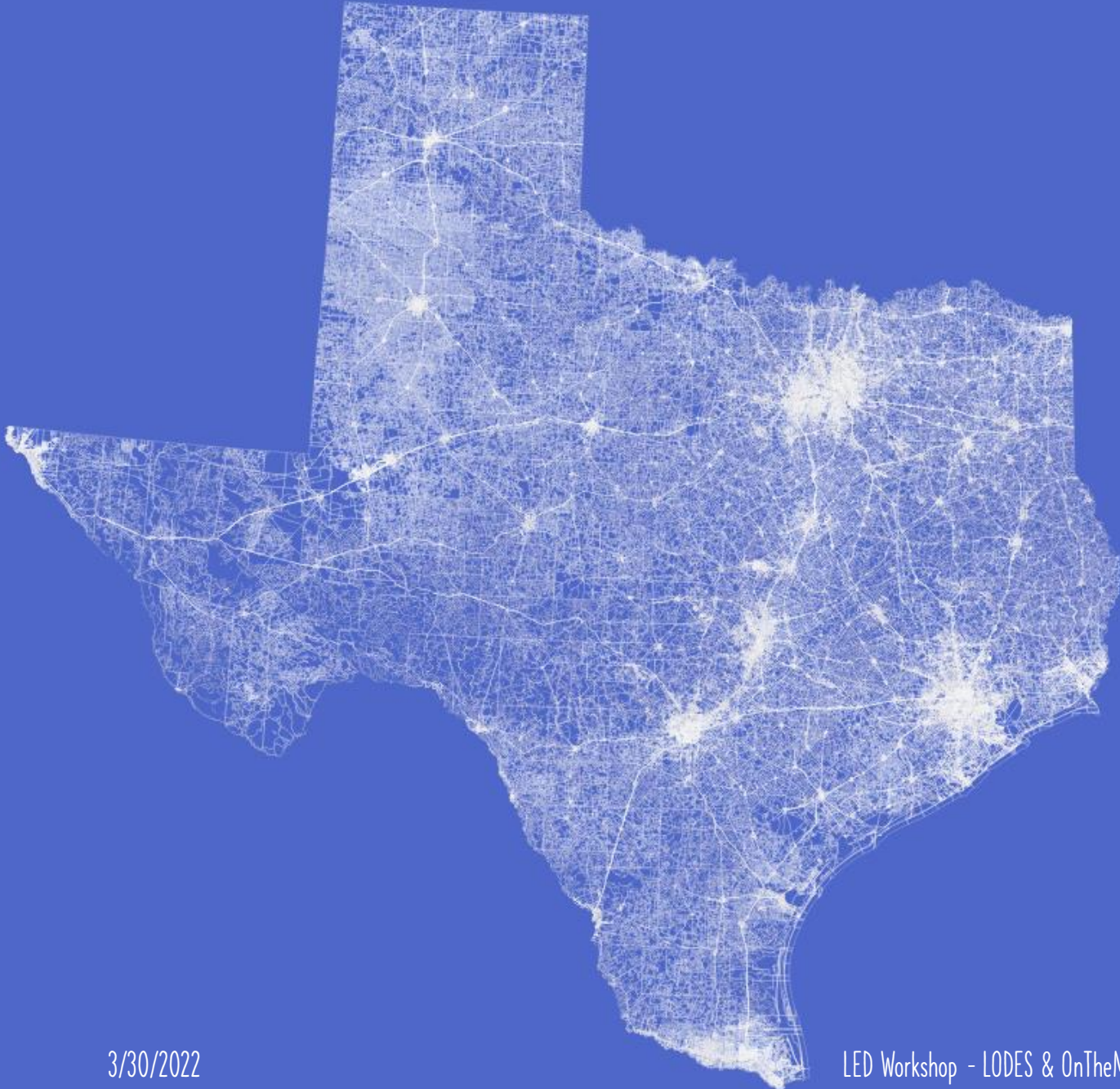
Home Analysis

3 Jobs with home locations
in Texas



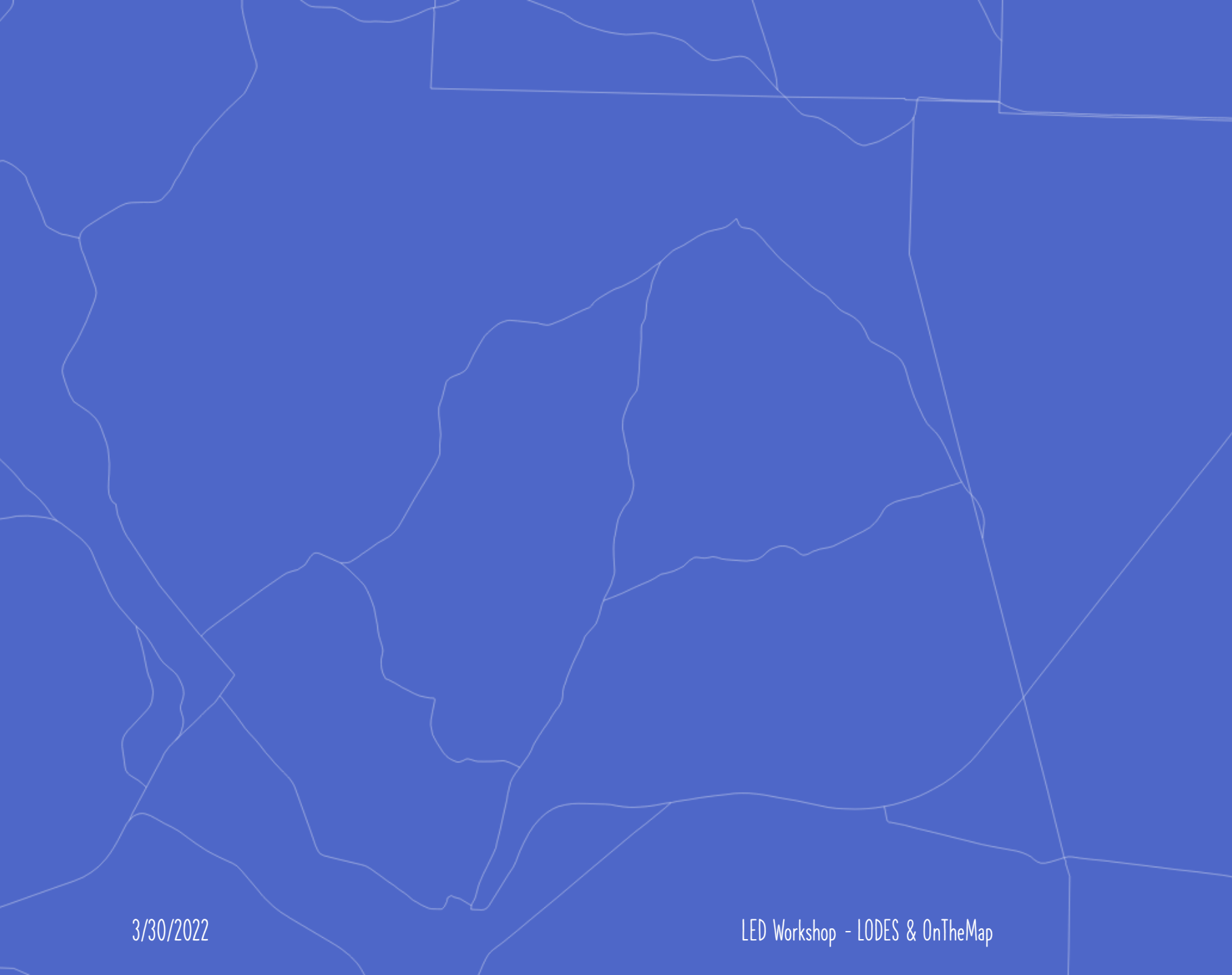
OD (Origin-Destination) Analysis

2 jobs with both home and
work locations in Texas



LODES/OnTheMap is
published at the Census Block

~669k Blocks in Texas



Let's zoom in a little
Done



These are block boundaries

OnTheMap/LODES
Counts jobs by block

3 jobs have a residential
location in this one block

A stylized map of a city block with a white circle containing the number 3. The map is composed of white lines on a blue background, representing streets and building footprints. The number 3 is centered within a white circle in the upper-left quadrant of the map.

3

Each block will have a total of the number of jobs inside

3 jobs have a residential location in this block

Same thing for work locations

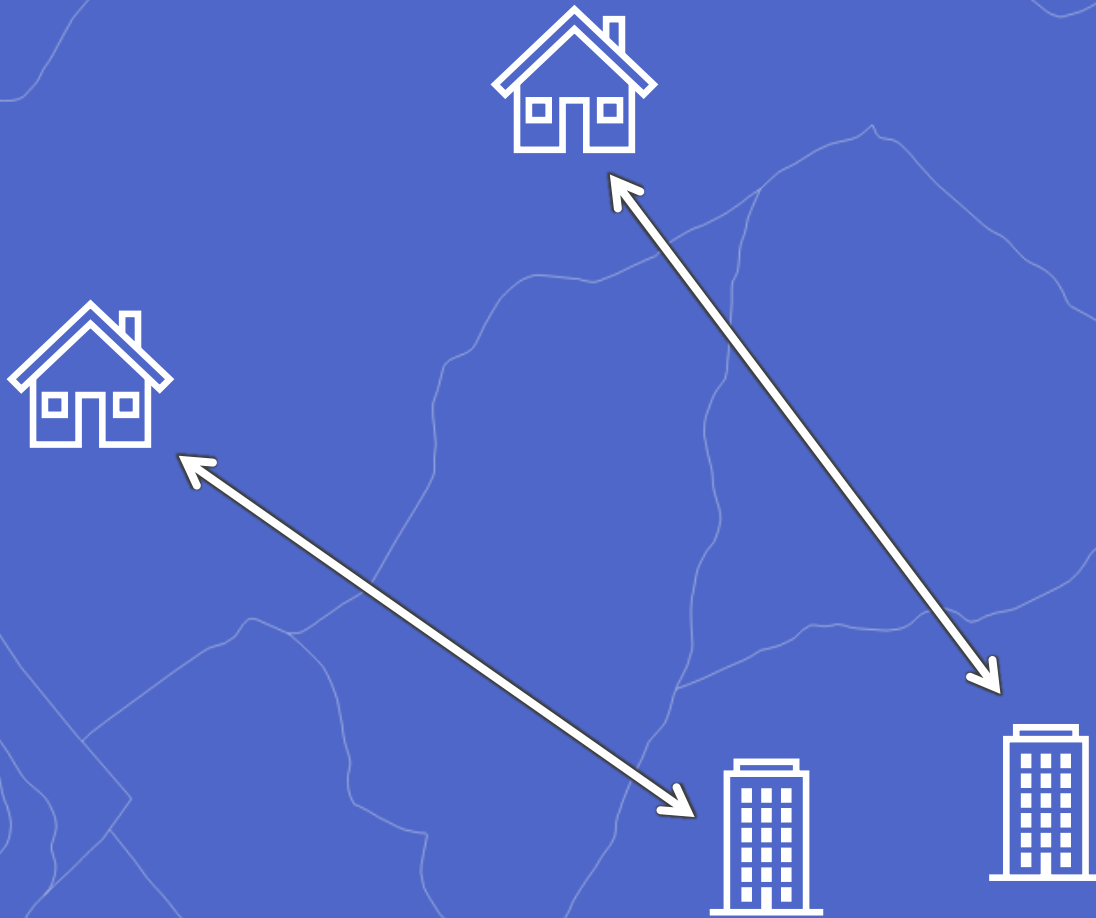
2 jobs have a work location in this block



A map with a white circle containing the number 2. The map is a light blue background with white lines representing geographical features or boundaries. A white circle is centered on the map, containing the number 2 in a black font.

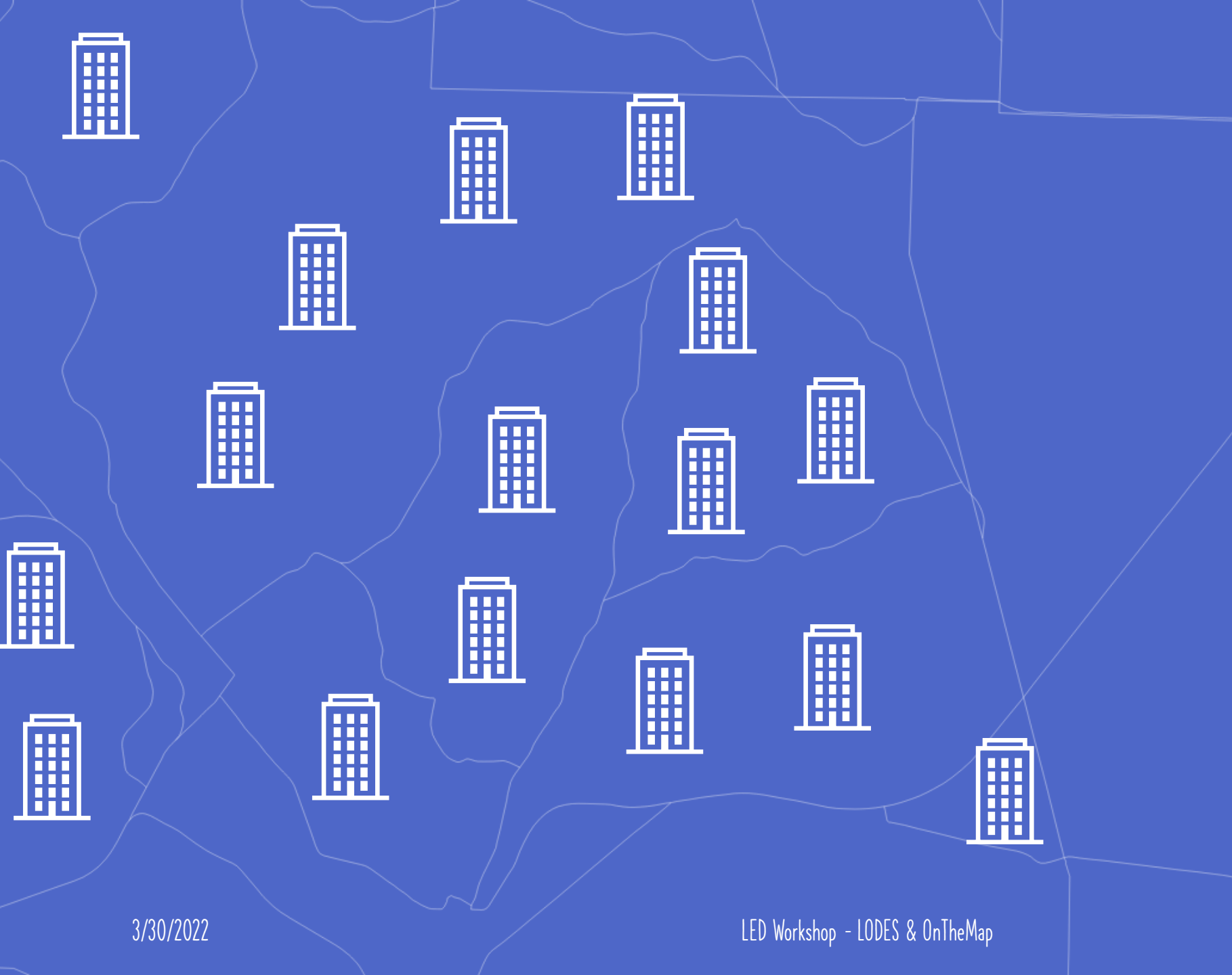
Each block will have a total of the number of jobs inside

2 jobs have a work location in this block

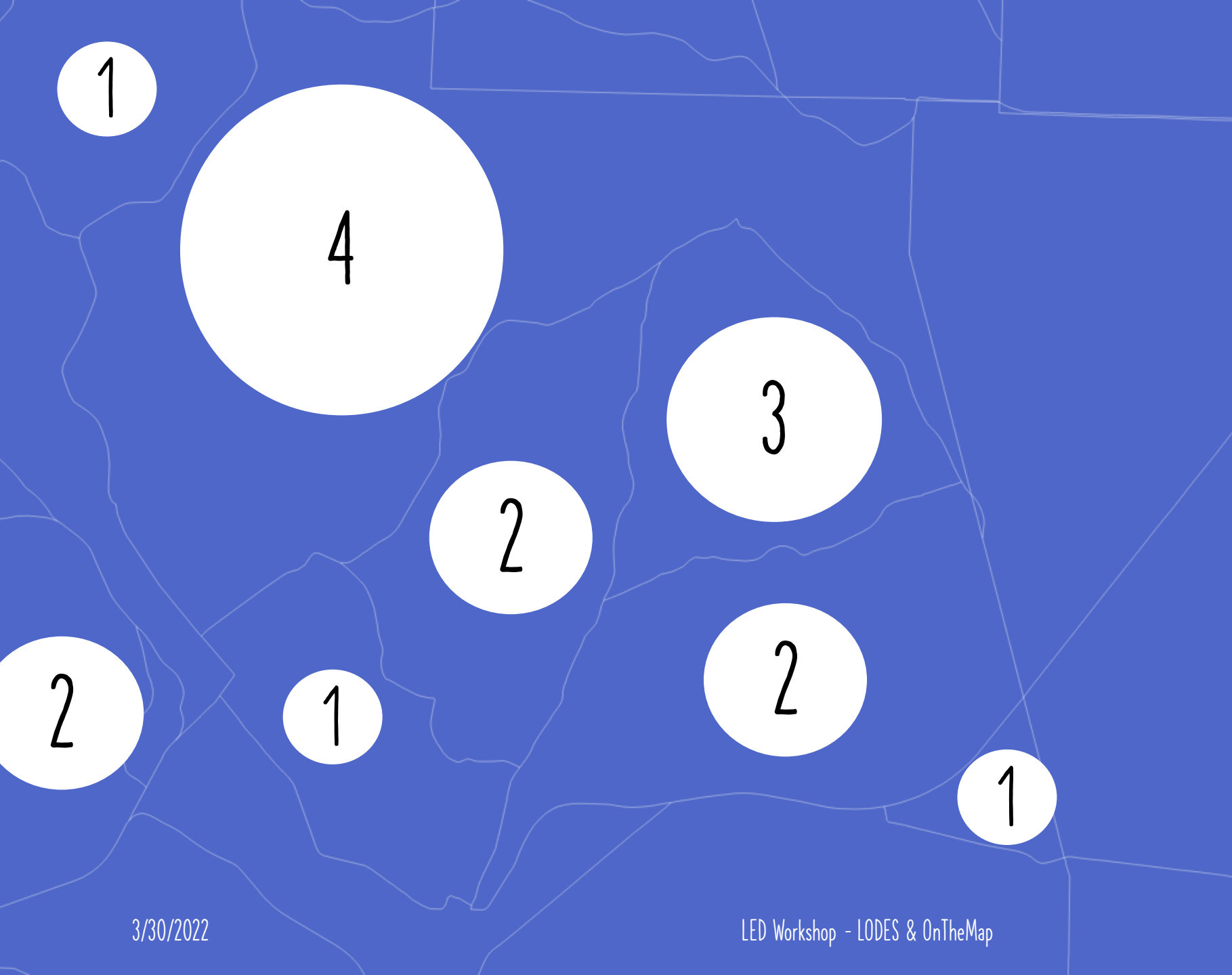


The connections between home and work are still there

Just ask OnTheMap the right questions

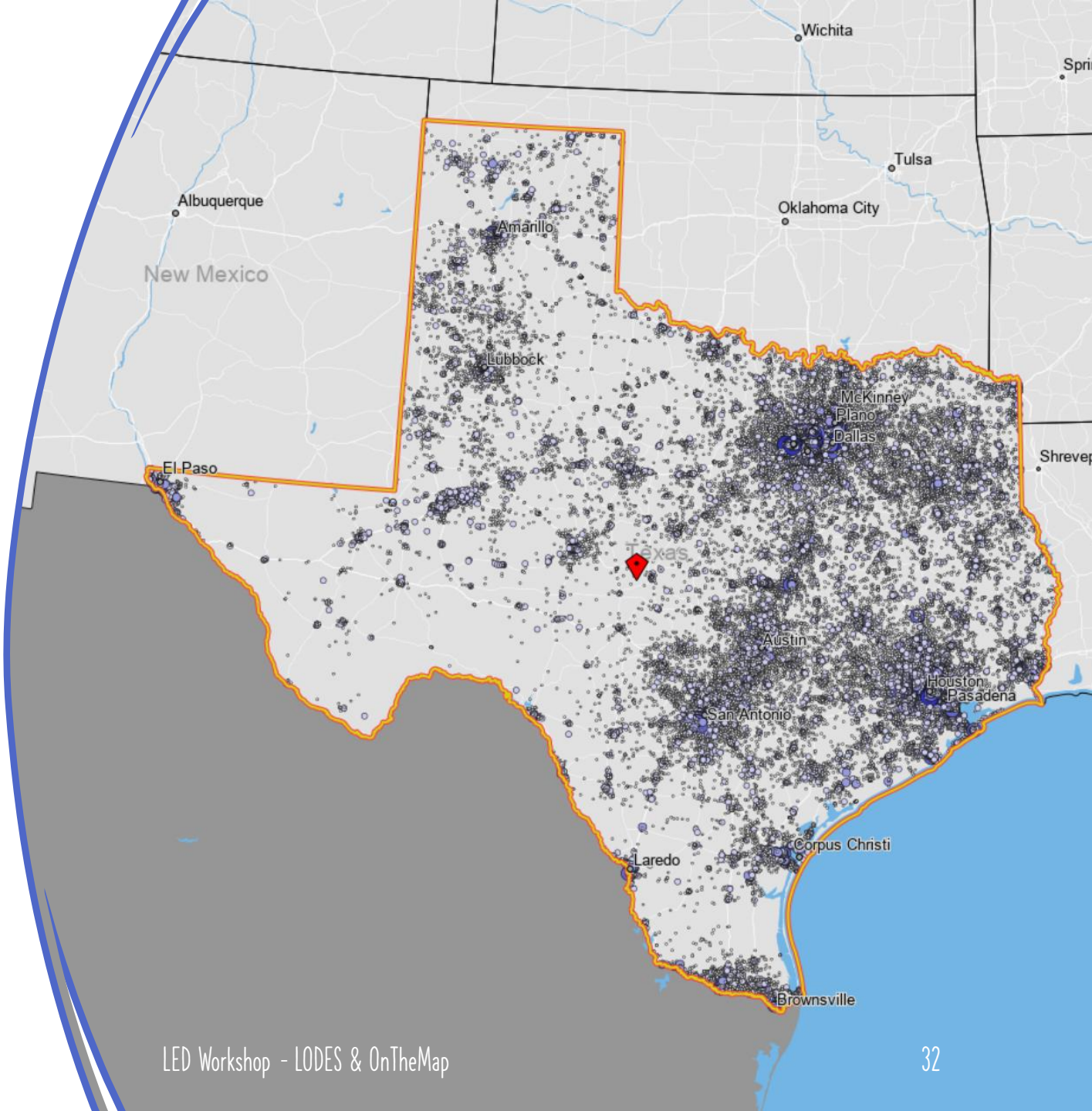


Jobs are everywhere



They just look a little different than you may be used to in LODES/OnTheMap

MORE CLEAR NOW?



ON THE MAP BASICS

Bend City, OR

Q&A

OnTheMap Basics - Bend City, OR

USING SATELLITE IMAGERY TO VALIDATE RESIDENTIAL DATA

Chesapeake Beach, MD

WE NEED YOU TO UNDERSTAND YOUR REGION

You're probably the only person looking at your area

There are so many

- Data points
- Geographies
- Settings

Be careful, go slowly, and try to understand your region/area

No one else has probably ever seen it



FINDING ODDITIES

Same area/settings - 2019 vs 2018

LODES/OnTheMap is released at the Block level (super small)

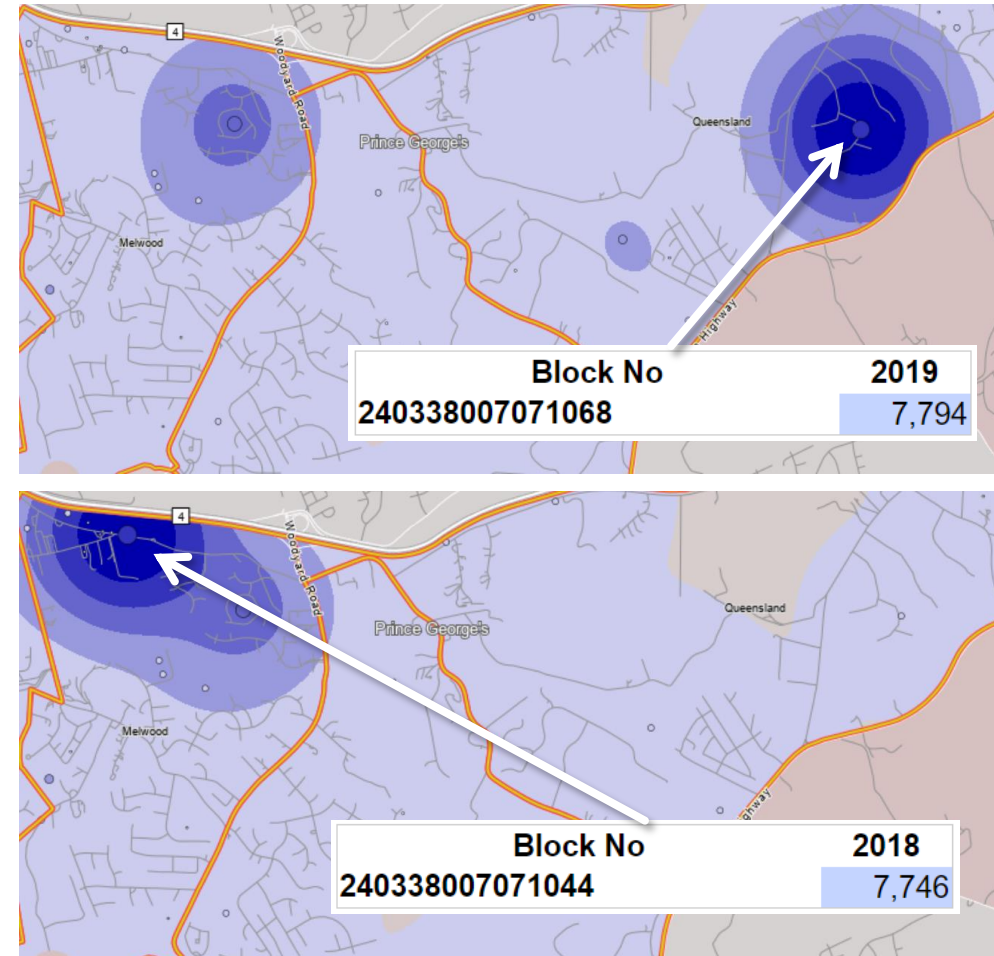
Blocks are composed into an Area of Interest

Lots of large, visible changes happen (e.g. seen right →)

Plenty of small, hard to see ones are happening too

All data has this

It's just visible in LODES/OnTheMap



Goal:

Validate "Synthetic" Home Data

More info: [Confidentiality Protection Link](#)

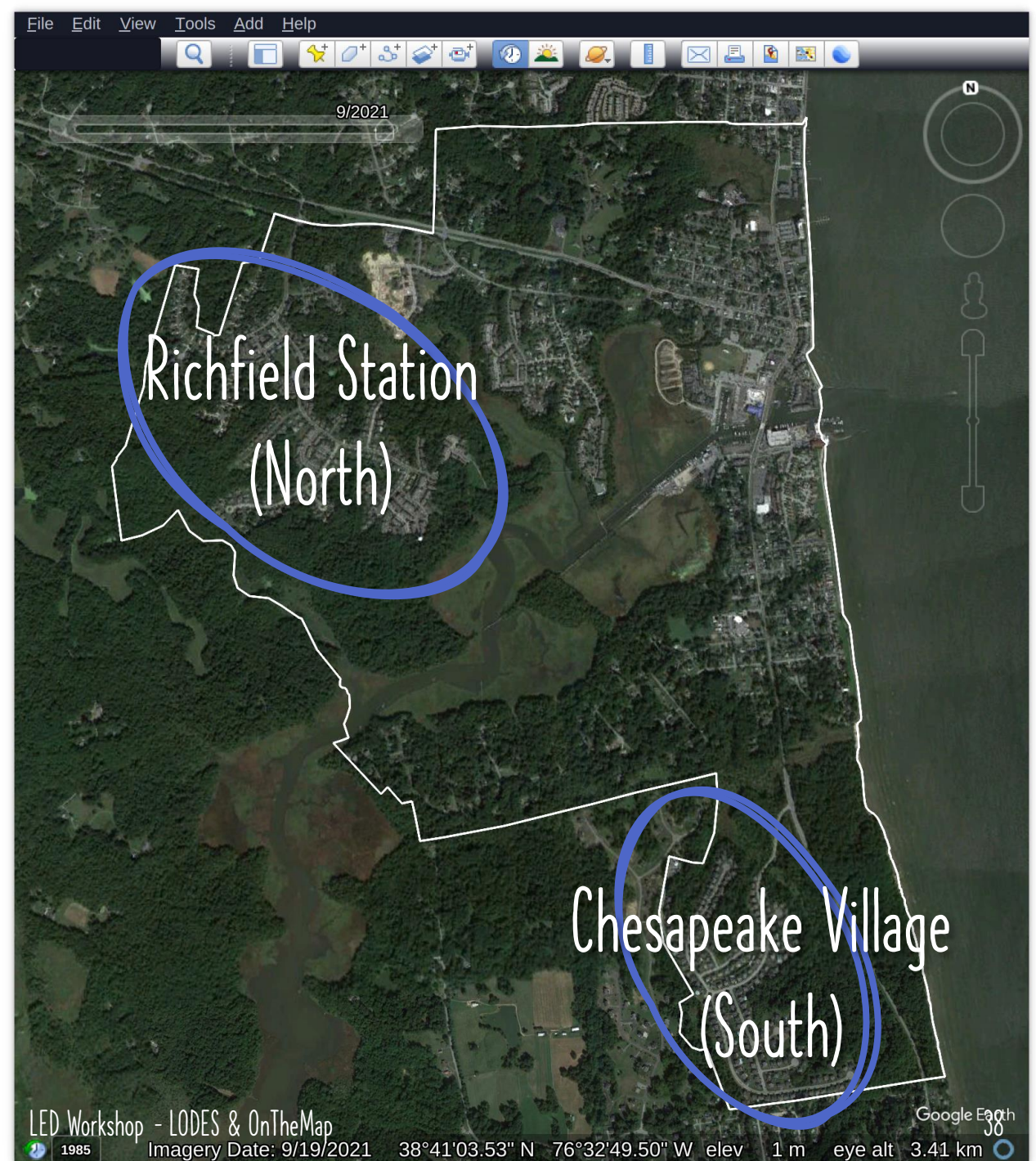
Richfield Station

- Existing neighborhood
- Single family & medium density expansion

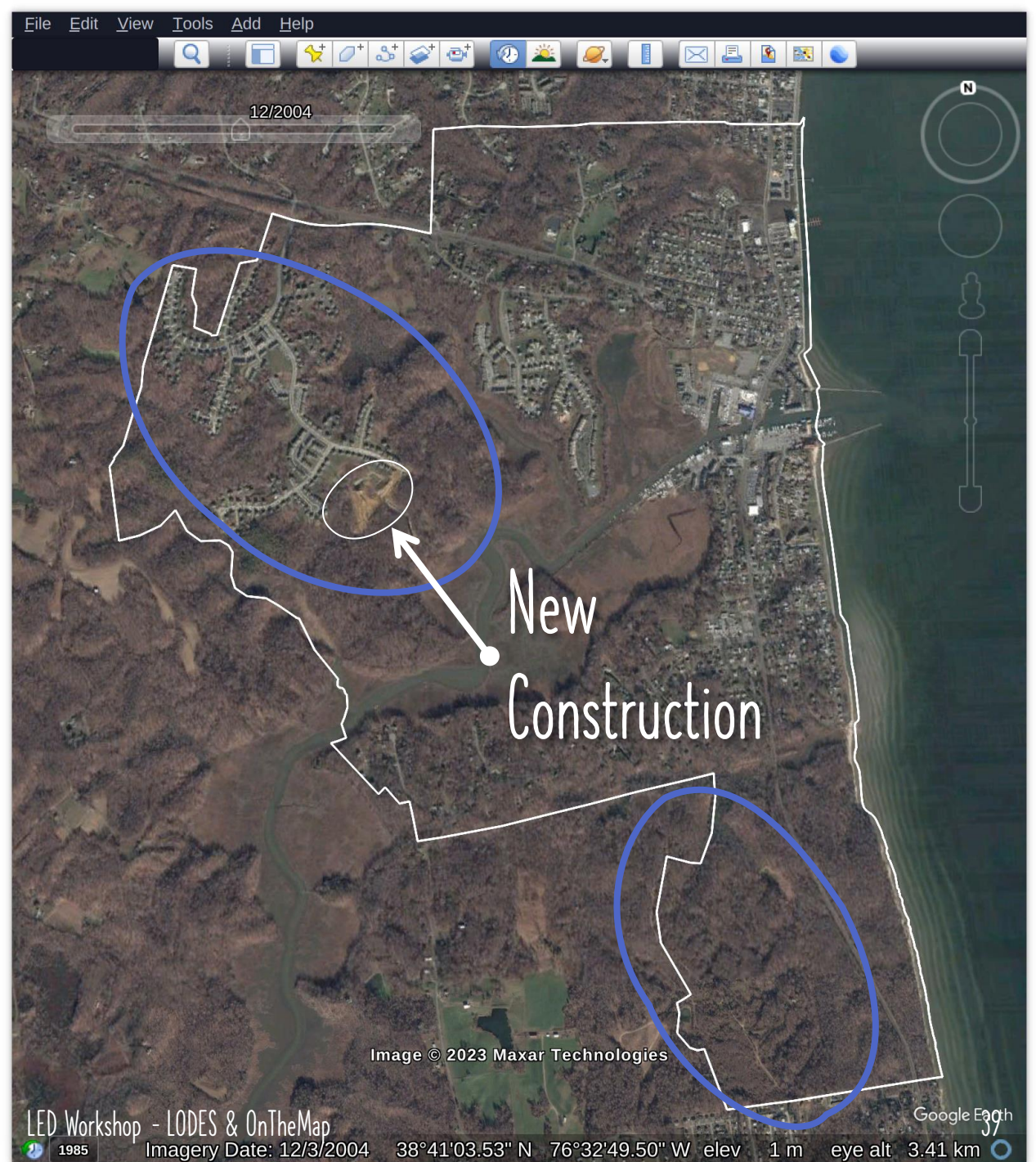
Chesapeake Village

- New Neighborhood

3/30/2022

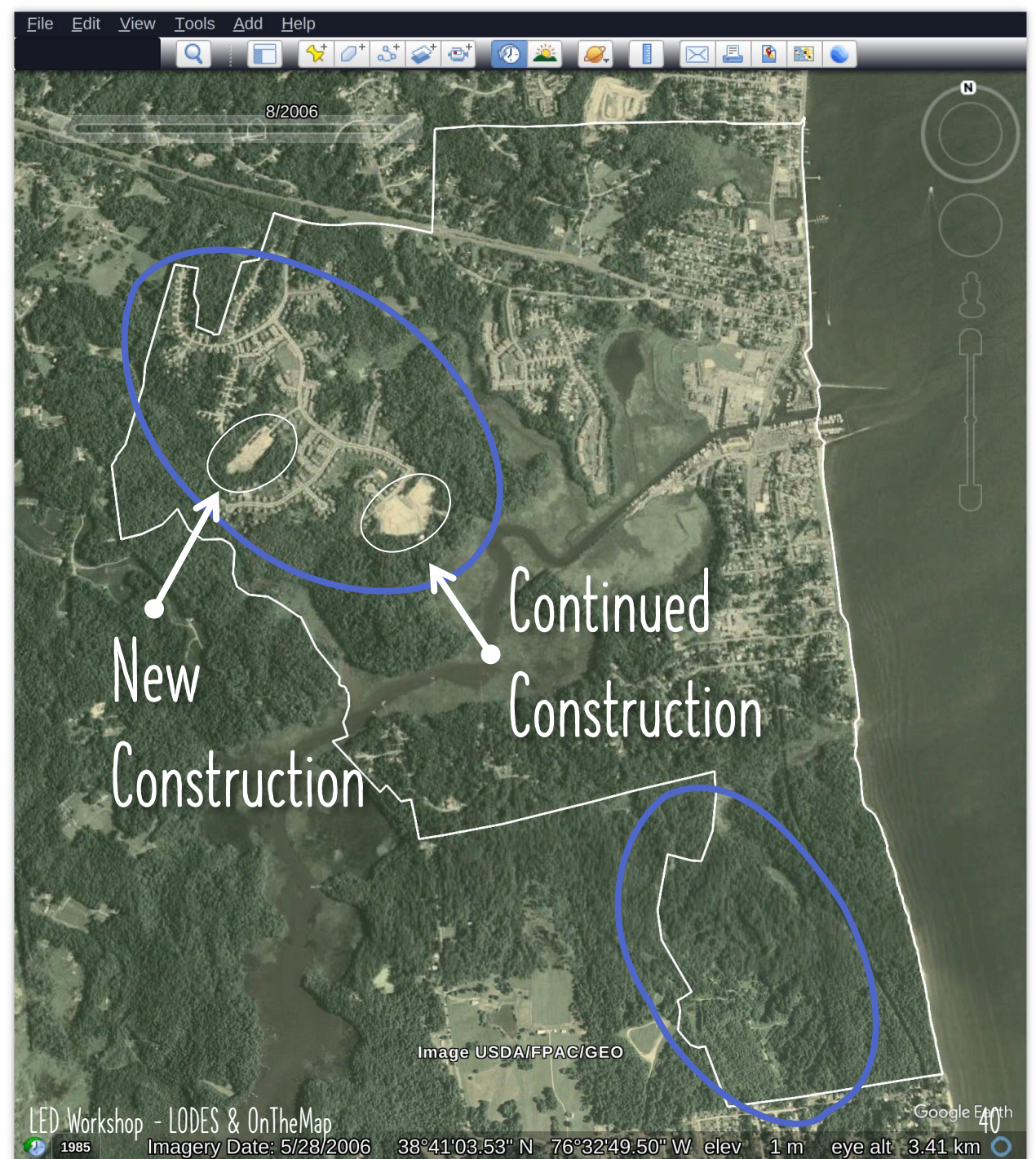


2004



3/30/2022

2006

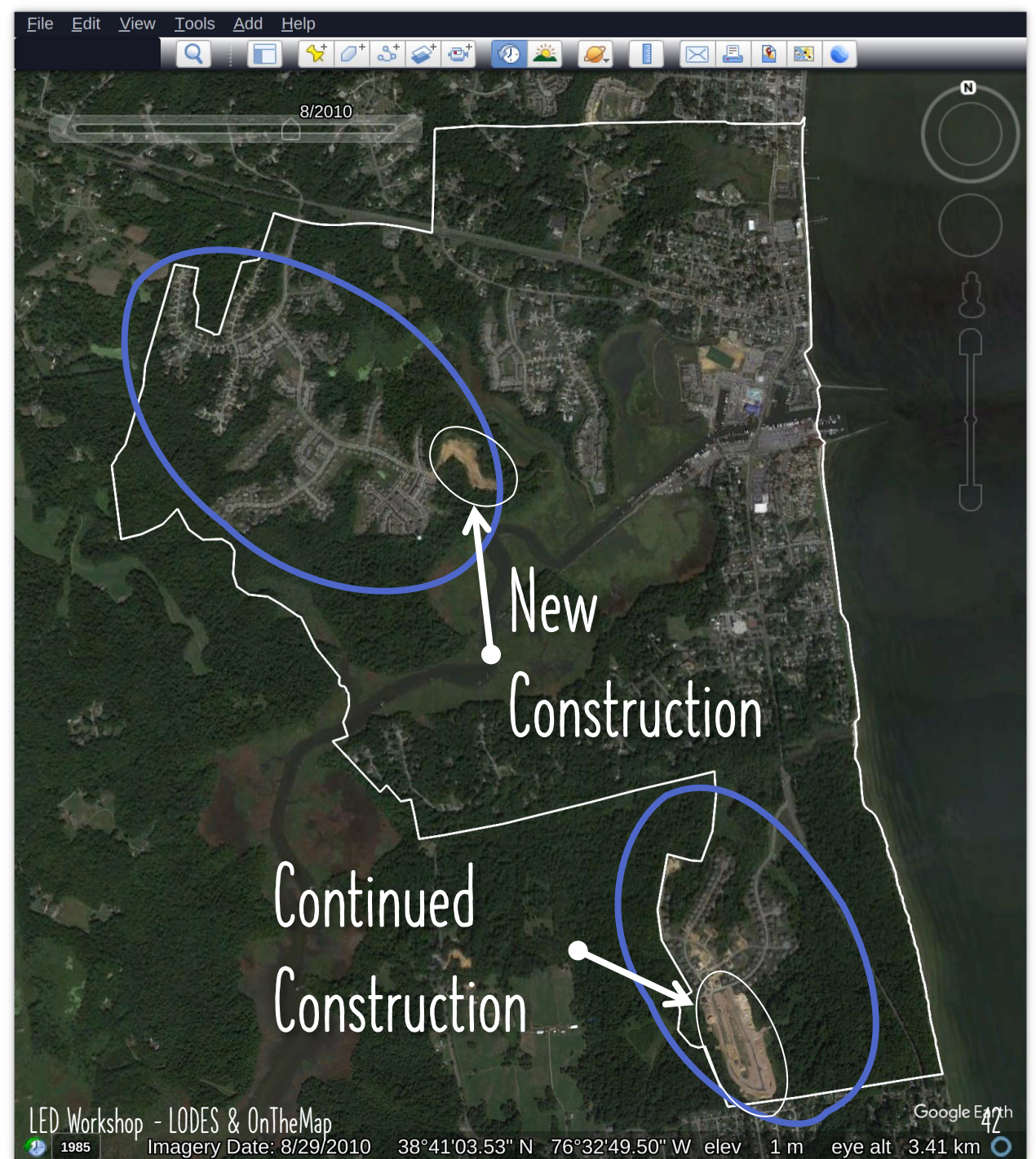


2007



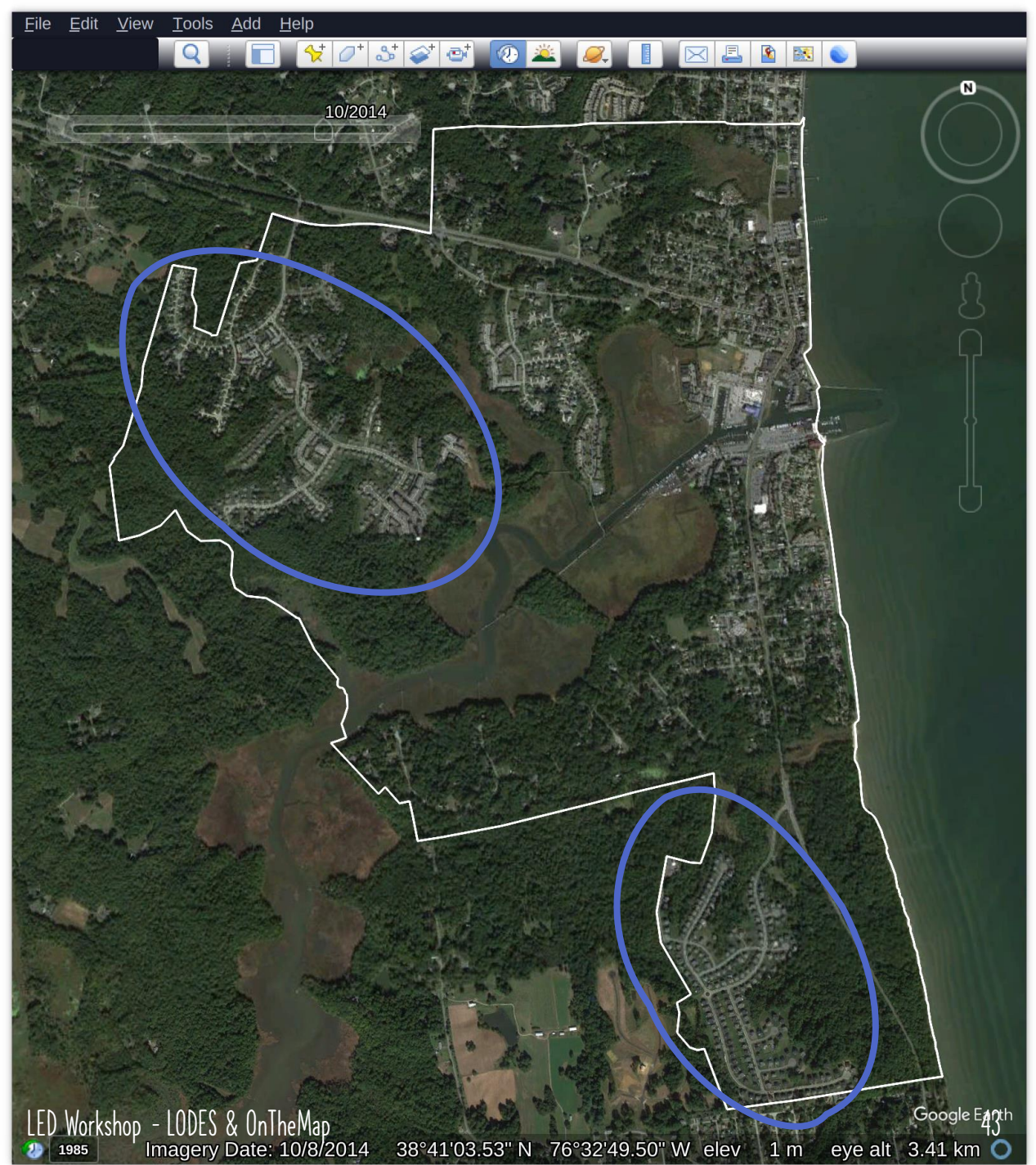
3/30/2022

2010



3/30/2022

2014



3/30/2022

DATES TO KEEP IN MIND

Richfield Station (North)

2004 - construction starts

2010 - mostly done

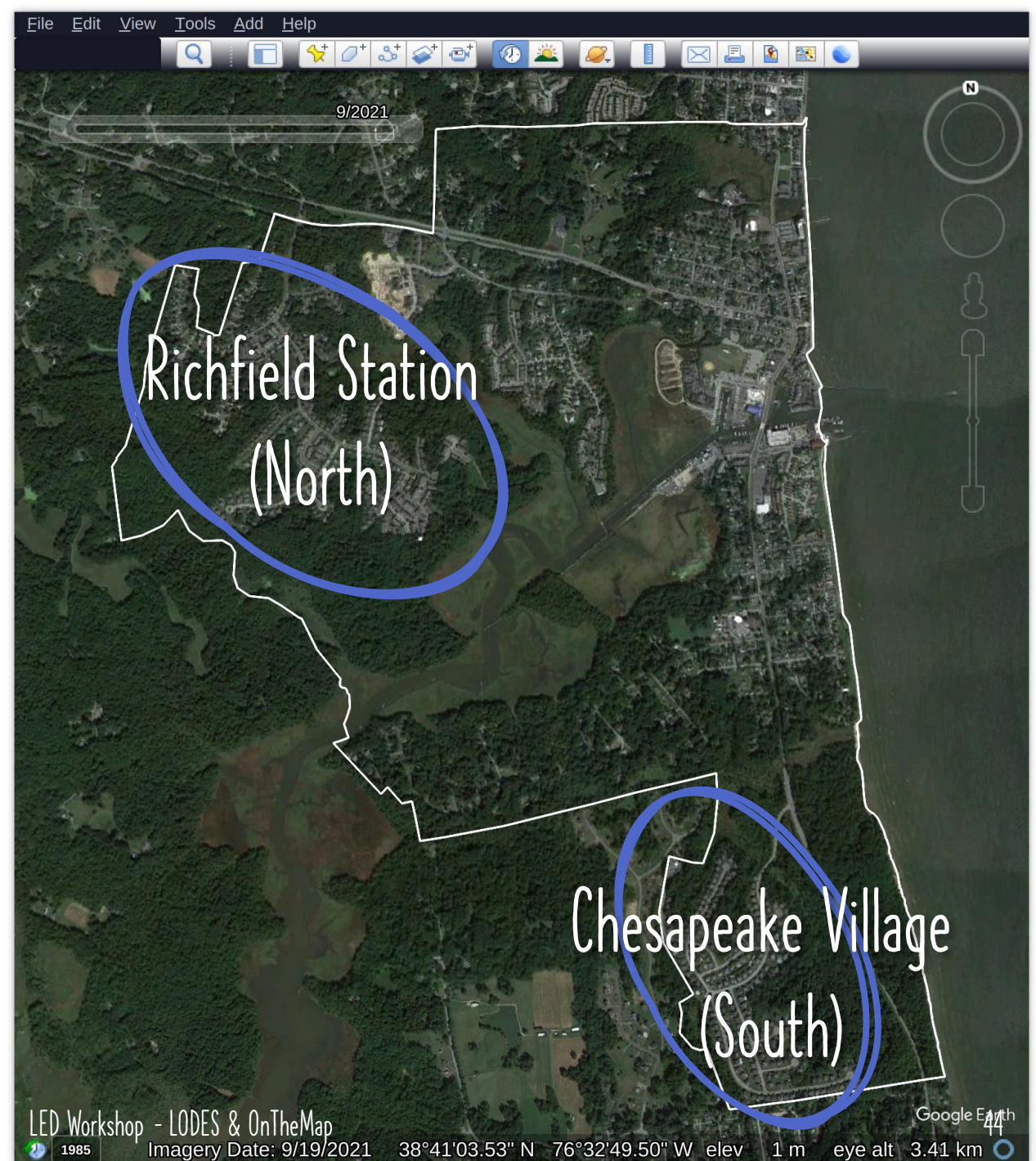
2014 - done

Chesapeake Village (South)

2007 - construction starts

2010 - halfway done

2014 - done



GENERAL RESULTS

Richfield Station (North)

2004 - construction starts

2010 - mostly done

2014 - done

Chesapeake Village (South)

2007 - construction starts

2010 - halfway done

2014 - done

Primary Jobs

2004 = 149

2010 + 1 = 323

2014 + 1 = 578

2007 = 0

2010 + 1 = 78

2014 + 1 = 106

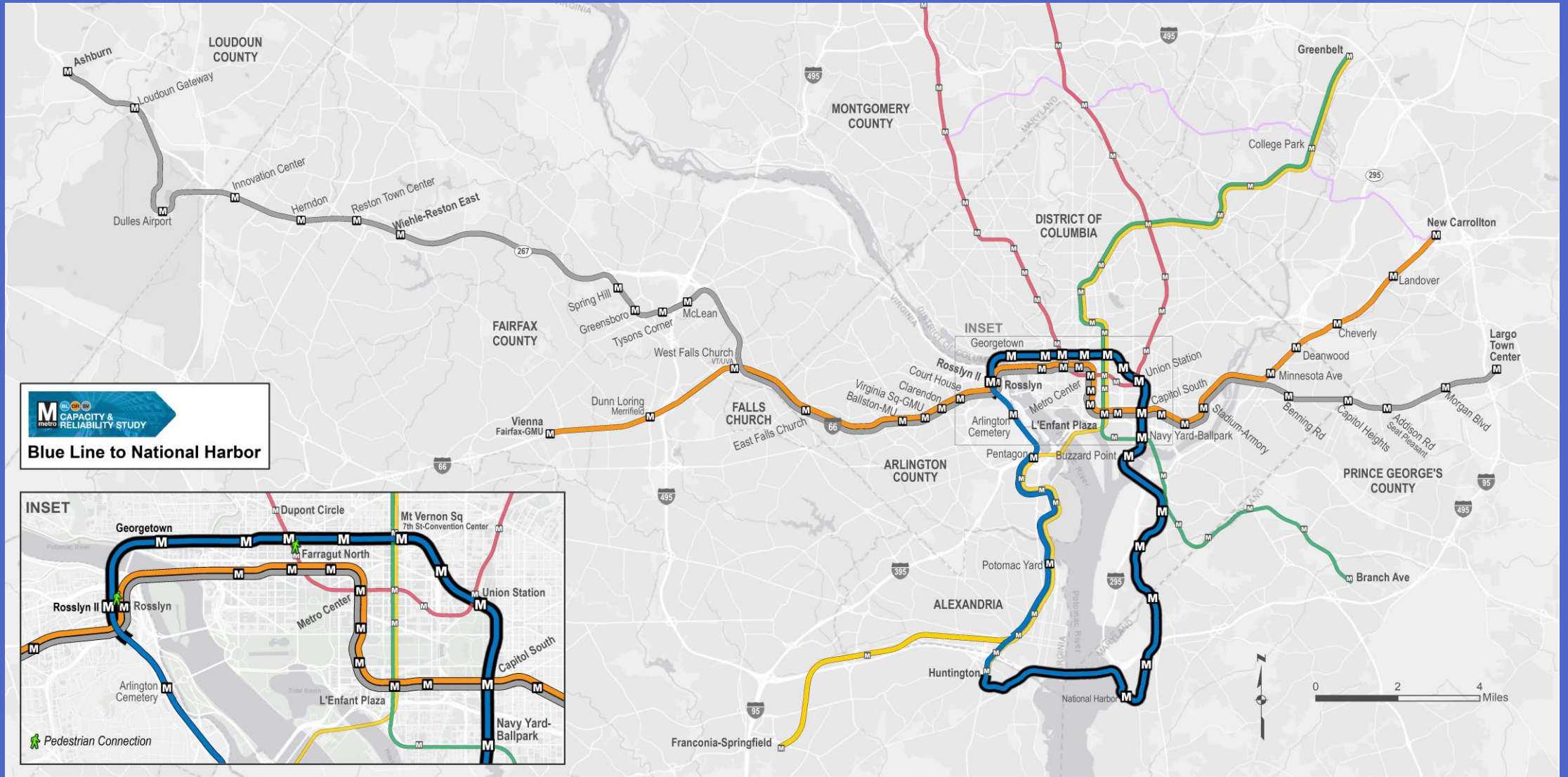
Q&A

Validate "Synthetic" Residential Data w/ Satellite Imagery

DC METRO BLUE LINE

Using LODES to evaluate the WMATA Proposals

Source Data: WMATA Concepts/Proposal PDF ([link](#))



New blue line (dashed)
New blue stations (star)





Add in the existing lines/stations

A map of Washington, D.C. showing the Potomac River and the city's street grid. The map is dark gray with white lines for streets and water bodies. Numerous white dots are scattered across the map, representing existing stations. A cluster of yellow stars is located in the central-northern part of the city, representing blue line stations. The text 'DISTRICT OF COLUMBIA MARYLAND' is visible on the right side of the map.

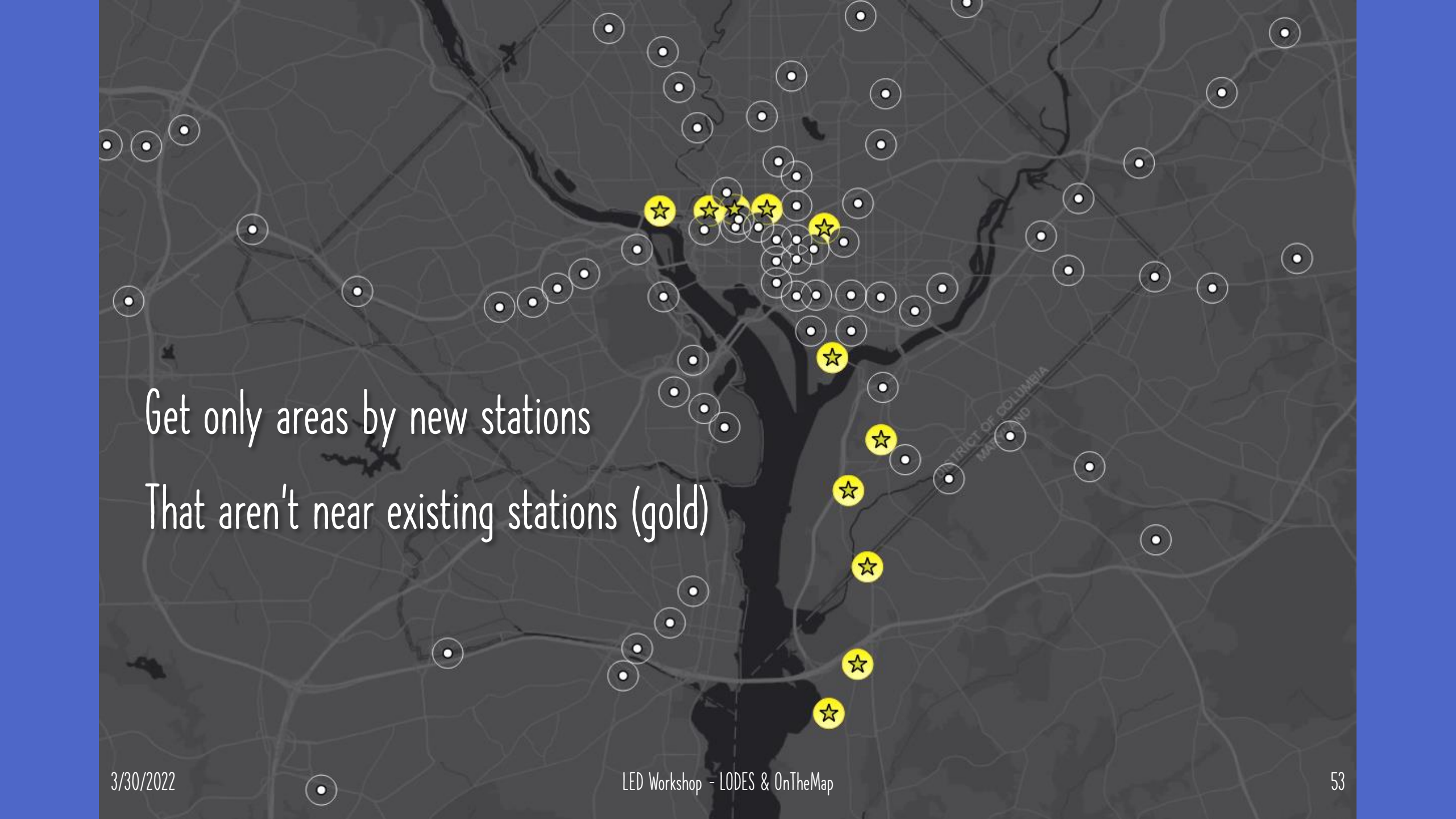
Take the blue line stations (star)

Take all existing stations (dot)

A dark-themed map of Washington, D.C., showing the city's street grid and the Potomac River. Numerous white circular markers are scattered across the map, representing various locations. A central cluster of these markers is circled in red. Within this red circle, several markers are highlighted with yellow stars. Other yellow stars are placed around the city, particularly along the Potomac River and in the downtown area. The text 'DISTRICT OF COLUMBIA' and 'MAY 1900' is visible on the map.

Add a ¼ mile radius

Call these the "walk/bike/scooter" areas

A map of Washington D.C. showing the Potomac River and the city's layout. Numerous white circles represent existing stations, while several gold stars represent new stations. The gold stars are located in the central and southern parts of the city, away from the dense cluster of existing stations in the north. The text 'DISTRICT OF COLUMBIA' and 'MARIAND' are visible on the map.

Get only areas by new stations
That aren't near existing stations (gold)

GENERAL RESULTS

Work near new station
but live by existing station

Live near new station
but work by existing station

Live and work near new station

Primary Jobs (2019)

4574

5200

927

Q&A

Blue Line Concept or Other